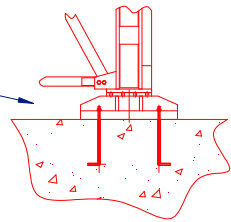
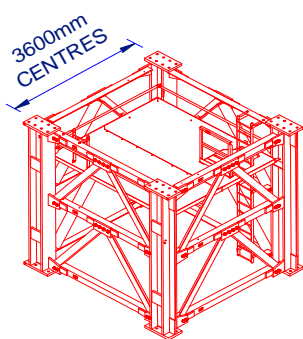
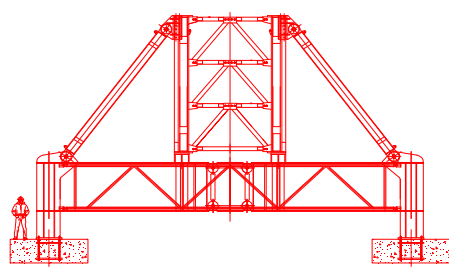


FREE STANDING HEIGHT - UP TO 76m (19 TOWERS)

M2480D HEAVY DUTY TOWER CRANE



TYPICAL LOADS	
LOAD	RADIUS
330T	14.4m
220T	21.3m
165T	27.5m
110T	38.5m
55.0T	63.4m
32.8T	80.0m
20.6T	91.3m

Technical Data Sheet





Boom Length	Max Rad. for Max WLL	Min Rad.	WLL at Min Rad.	1 FALL																			Max Rad.	WLL at Max Rad.	
				Radius(metres) & Capacity (tonnes)																					
				10.0	15.0	20.0	25.0	27.5	30.0	35.0	40.0	45.0	50.0	55.0	60.0	62.5	65.0	70.0	72.5	75.0	80.0	85.0			90.0
92.7	53.9	9.1	55.0	55.0	55.0	55.0	55.0	55.0	55.0	55.0	55.0	55.0	55.0	53.9	48.9	46.6	44.3	39.2	36.7	34.3	30.0	26.3	22.2	91.3	20.6
83.4	59.6	9.1	55.0	55.0	55.0	55.0	55.0	55.0	55.0	55.0	55.0	55.0	55.0	55.0	54.4	50.9	47.7	42.0	39.5	37.1	32.8			82.3	31.0
74.1	61.5	8.5	55.0	55.0	55.0	55.0	55.0	55.0	55.0	55.0	55.0	55.0	55.0	55.0	55.0	53.7	50.5	44.8	42.2					73.3	41.4
64.8	63.4	7.9	55.0	55.0	55.0	55.0	55.0	55.0	55.0	55.0	55.0	55.0	55.0	55.0	55.0	55.0	55.0	55.0	55.0	55.0	55.0	55.0	55.0	64.3	54.1
55.5	55.3	7.2	55.0	55.0	55.0	55.0	55.0	55.0	55.0	55.0	55.0	55.0	55.0	55.0	55.0	55.0	55.0	55.0	55.0	55.0	55.0	55.0	55.0	55.3	55.0
46.2	46.3	6.6	55.0	55.0	55.0	55.0	55.0	55.0	55.0	55.0	55.0	55.0	55.0	55.0	55.0	55.0	55.0	55.0	55.0	55.0	55.0	55.0	55.0	46.3	55.0
36.9	37.4	5.9	55.0	55.0	55.0	55.0	55.0	55.0	55.0	55.0	55.0	55.0	55.0	55.0	55.0	55.0	55.0	55.0	55.0	55.0	55.0	55.0	55.0	37.4	55.0
27.6	28.4	5.3	55.0	55.0	55.0	55.0	55.0	55.0	55.0	55.0	55.0	55.0	55.0	55.0	55.0	55.0	55.0	55.0	55.0	55.0	55.0	55.0	55.0	28.4	55.0

Boom Length	Max Rad. for Max WLL	Min Rad.	WLL at Min Rad.	2 FALL																			Max Rad.	WLL at Max Rad.	
				Radius(metres) & Capacity (tonnes)																					
				10.0	15.0	20.0	25.0	27.5	30.0	35.0	40.0	45.0	50.0	55.0	60.0	62.5	65.0	70.0	72.5	75.0	80.0	85.0			90.0
92.7	9.5	9.5	110.0	109.7	103.3	96.0	89.2	86.2	83.3	78.0	73.1	68.4	61.9	55.1	47.4	44.0	40.8	35.2	32.7	30.4	26.3	22.7	19.6	90.6	19.3
83.4	33.7	8.8	110.0	110.0	110.0	110.0	110.0	110.0	110.0	108.2	93.9	79.5	68.0	58.6	50.8	47.4	44.2	38.6	36.1	33.8	29.7			81.6	28.6
74.1	36.4	8.2	110.0	110.0	110.0	110.0	110.0	110.0	110.0	110.0	110.0	110.0	110.0	110.0	97.1	82.6	71.1	61.6	53.8	50.4	47.2	41.7	39.2	72.6	39.1
64.8	37.1	7.5	110.0	110.0	110.0	110.0	110.0	110.0	110.0	110.0	110.0	110.0	110.0	110.0	100.1	85.6	74.0	64.5	56.7	53.3				63.6	51.9
55.5	37.9	6.9	110.0	110.0	110.0	110.0	110.0	110.0	110.0	110.0	110.0	110.0	110.0	110.0	102.9	88.3	76.7							54.6	66.5
46.2	38.6	6.2	110.0	110.0	110.0	110.0	110.0	110.0	110.0	110.0	110.0	110.0	110.0	110.0	105.4	89.0								45.7	83.6
36.9	36.4	5.6	110.0	110.0	110.0	110.0	110.0	110.0	110.0	110.0	110.0	110.0	110.0	110.0										36.7	107.3
27.6	27.7	4.9	110.0	110.0	110.0	110.0	110.0	110.0	110.0	110.0	110.0	110.0	110.0	110.0										27.7	110.0

Boom Length	Max Rad. for Max WLL	Min Rad.	WLL at Min Rad.	3 FALL																			Max Rad.	WLL at Max Rad.	
				Radius(metres) & Capacity (tonnes)																					
				10.0	15.0	20.0	25.0	27.5	30.0	35.0	40.0	45.0	50.0	55.0	60.0	62.5	65.0	70.0	72.5	75.0	80.0	85.0			90.0
92.7	-	9.2	113.9	112.7	105.7	97.8	90.5	87.3	84.2	78.6	73.4	68.7	62.1	52.8	45.1	41.8	38.7	33.2	30.7	28.4	24.4	20.9	18.0	90.7	17.7
83.4	-	8.6	161.7	158.4	147.5	136.1	126.2	121.8	117.7	109.8	91.3	76.9	65.5	56.1	48.4	45.0	41.9	36.4	34.0	31.8	27.8			81.7	26.7
74.1	25.9	7.9	165.0	165.0	165.0	165.0	165.0	153.8	138.0	113.2	94.6	80.2	68.7	59.4	51.6	48.3	45.2	39.8	37.4					72.7	37.3
64.8	26.4	7.3	165.0	165.0	165.0	165.0	165.0	157.1	141.3	116.4	97.8	83.3	71.8	62.5	54.8	51.5								63.7	50.0
55.5	26.8	6.6	165.0	165.0	165.0	165.0	160.3	144.4	119.4	100.8	86.3	74.8												54.7	64.1
46.2	27.2	6.0	165.0	165.0	165.0	165.0	162.9	147.3	122.3	130.6	86.8													45.8	80.9
36.9	27.5	5.3	165.0	165.0	165.0	165.0	165.0	149.6	123.3															36.8	103.9
27.6	26.3	4.7	165.0	165.0	165.0	165.0	144.1																	27.8	137.3

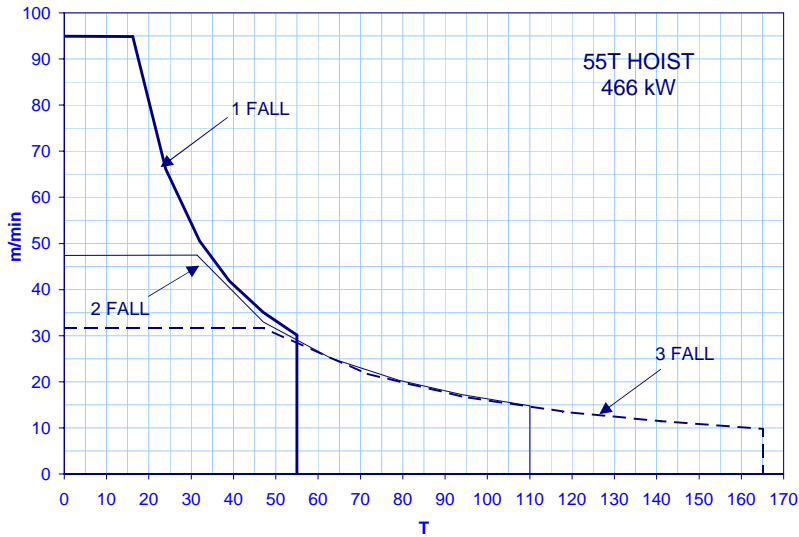
Boom Length	Max Rad. for Max WLL	Min Rad.	WLL at Min Rad.	4 FALL																			Max Rad.	WLL at Max Rad.	
				Radius(metres) & Capacity (tonnes)																					
				10.0	15.0	17.5	20.0	25.0	27.5	30.0	32.5	35.0	40.0	42.5	45.0	50.0	55.0	60.0	62.5	65.0	67.5	70.0			72.5
74.1	9.4	7.9	220.0	218.0	201.3	192.8	185.1	170.2	151.2	135.4	122.1	110.7	92.1	84.5	77.8	66.4	57.1	49.4	46.1	43.1	40.3	37.8	35.6	72.7	35.4
64.8	20.4	7.3	220.0	220.0	220.0	220.0	173.7	154.7	138.9	125.5	114.0	95.5	87.8	81.1	69.6	60.4	52.8	49.6						63.7	48.2
55.5	20.6	6.6	220.0	220.0	220.0	220.0	177.0	158.0	142.2	128.7	117.3	98.7	91.0	84.3	72.9									54.7	62.2
46.2	20.9	6.0	220.0	220.0	220.0	220.0	179.7	161.0	145.2	131.8	120.3	101.7	94.1	84.6										45.8	78.8
36.9	21.1	5.3	220.0	220.0	220.0	220.0	182.1	163.4	147.9	134.5	120.7													36.8	101.7
27.6	21.3	4.7	220.0	220.0	220.0	220.0	183.5	141.2																27.8	134.5

Boom Length (m)	Max Rad. for Max WLL (m)	Min Rad. (m)	WLL at Min Rad. (T)	5 FALL																			Max Rad. (m)	WLL at Max Rad. (T)	
				Radius(metres) & Capacity (tonnes)																					
				7.5	10.0	12.5	15.0	20.0	22.5	25.0	30.0	32.5	35.0	37.5	40.0	42.5	45.0	47.5	50.0	55.0	57.5	60.0			62.5
64.8		7.3	269.6	269.1	262.5	256.7	252.2	223.1	194.7	171.5	136.7	123.3	111.9	102.0	93.4	85.8	79.0	73.0	67.7	85.5	54.6	51.1	48.0	63.7	46.6
55.5	16.8	6.6	275.0	275.0	275.0	275.0	275.0	226.3	197.9	175.0	140.1	126.7	115.3	105.4	96.7	89.1	82.4	76.5	71.1					54.7	60.6
46.2	16.9	6.0	275.0	275.0	275.0	275.0	275.0	229.3	200.8	178.0	143.3	129.9	118.5	108.6	99.9	92.4	82.9					45.8	77.2		
36.9	17.1	5.3	275.0	275.0	275.0	275.0	275.0	231.9	203.3	180.5	146.2	132.8	118.6									36.8	99.9		
27.6	17.3	4.7	275.0	275.0	275.0	275.0	275.0	235.2	206.5	180.7												27.8	132.4		

Boom Length (m)	Max Rad. for Max WLL (m)	Min Rad. (m)	WLL at Min Rad. (T)	6 FALL																			Max Rad. (m)	WLL at Max Rad. (T)
				Radius(metres) & Capacity (tonnes)																				
				7.5	10.0	12.5	15.0	17.5	20.0	22.5	25.0	27.5	30.0	32.5	35.0	37.5	40.0	42.5	45.0	47.5	50.0	52.5		
55.5	-	6.6	307.1	303.9	295.5	288.8	283.5	261.5	224.9	196.4	173.4	154.3	138.5	125.1	113.7	103.8	95.2	87.7	81.0	75.1	69.8	65.2	54.7	59.4
46.2	10.5	6.0	330.0	330.0	330.0	324.5	313.5	264.6	227.9	199.4	176.6	157.7	141.8	128.5	117.0	107.2	98.6	91.2	81.7				45.8	76.0
36.9	14.4	5.3	330.0	330.0	330.0	330.0	316.4	267.4	230.6	202.1	179.3	160.7	144.9	131.6	117.2							36.8	98.6	
27.6	14.5	4.7	330.0	330.0	330.0	320.0	270.9	234.1	205.5	178.8	137.5											27.8	131.0	

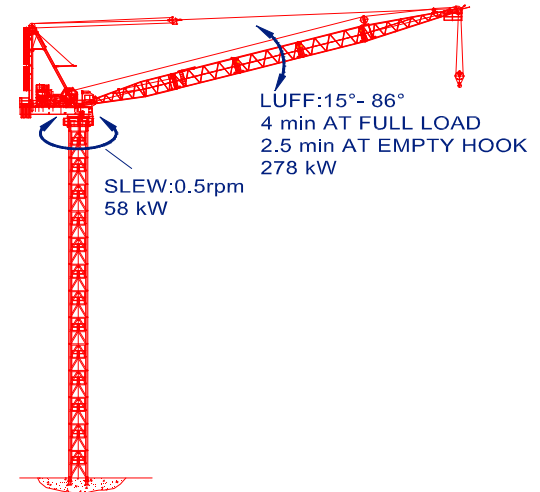
M2480D SPEEDS

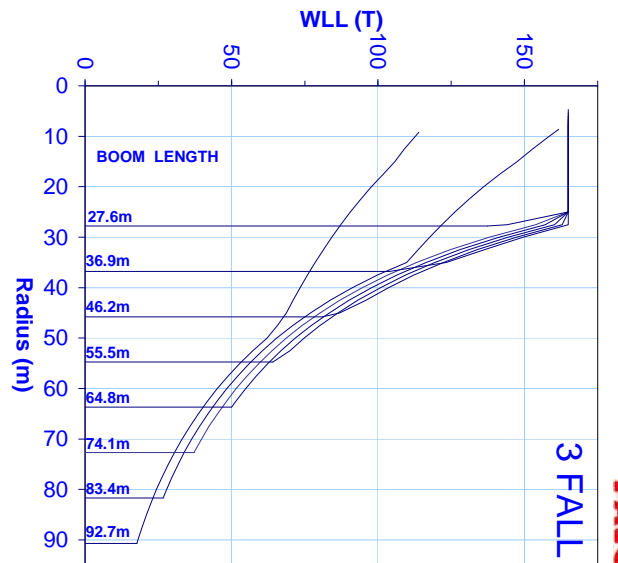
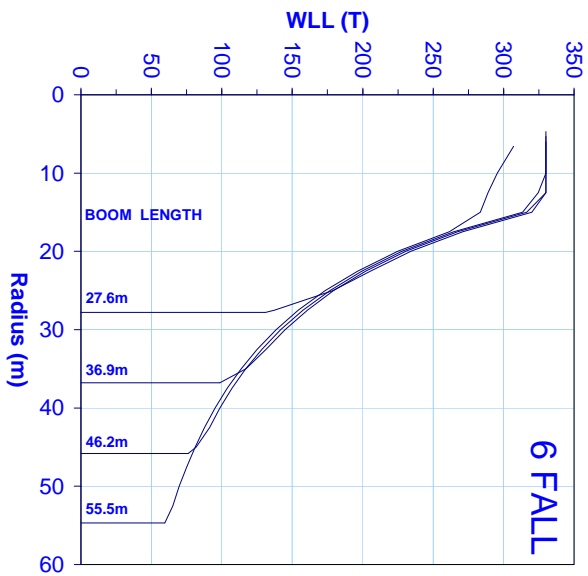
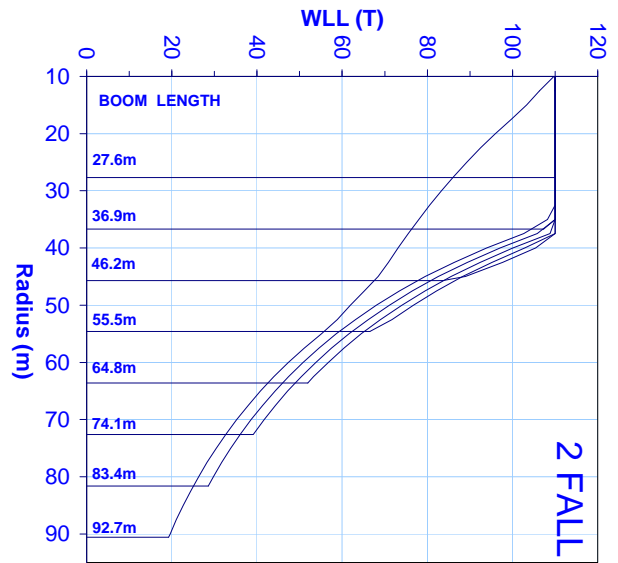
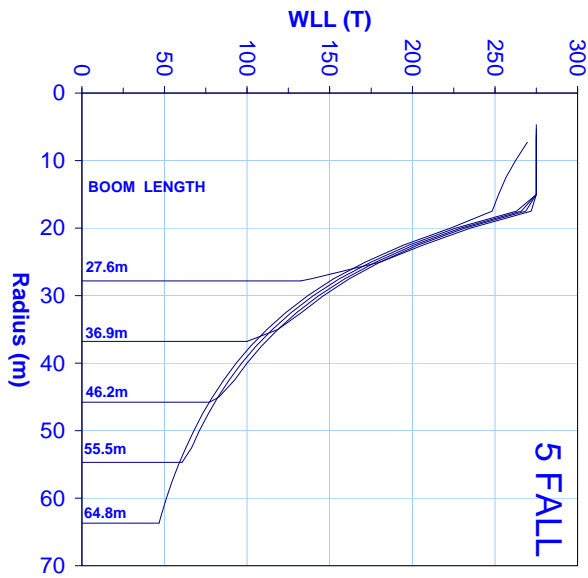
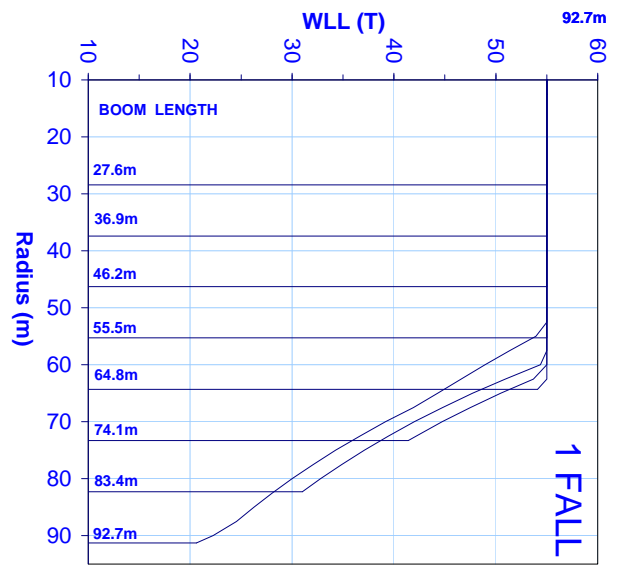
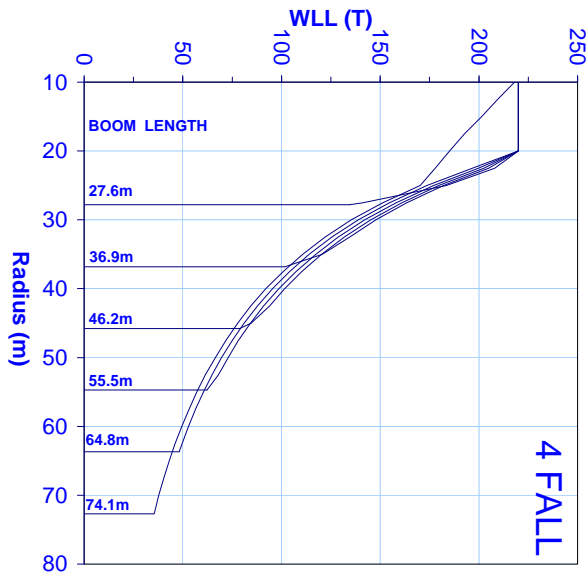
HOIST SPEED



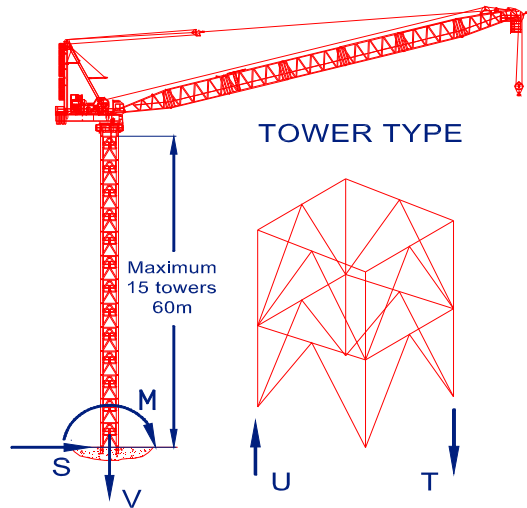
	LOAD (T)	SPEED (m/min)
1 FALL	16.2	94.9
	24.0	66.1
	32.0	50.5
	39.0	41.9
	47.0	35.0
2 FALL	55.0	30.1
	31.4	47.4
	47.0	33.0
	63.0	25.1
	79.0	20.3
3 FALL	94.0	17.2
	110.0	14.8
	47.3	31.6
	71.0	21.8
	94.0	16.8
	118.0	13.5
	141.0	11.4
	165.0	9.8

LUFF&SLEW SPEEDS

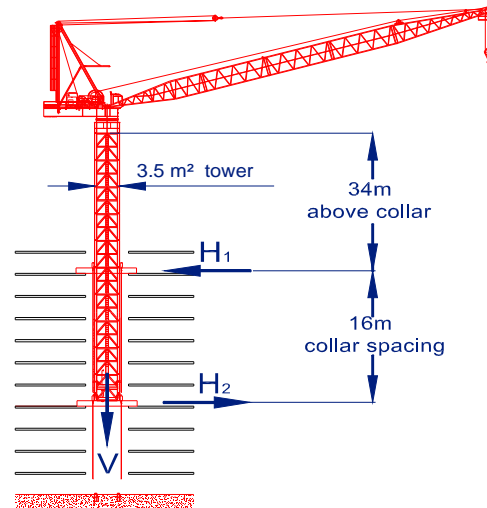




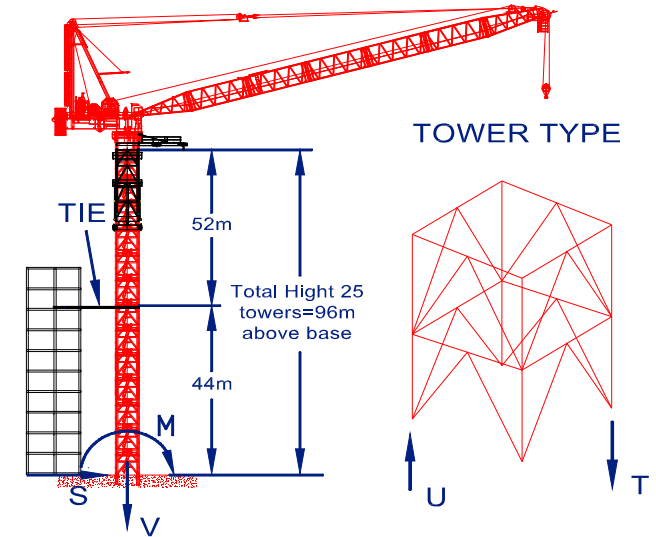
CRANE FREE-STANDING WITHOUT CLIMBING FRAME



INTERNAL CLIMBER ON COLLARS



WITH CLIMBER- ONE TIE ABOVE THE BASE



BUILDING REACTION				
Design Load	I/S*	O/S [‡]	O/S high ^	Unit
M	3913	3089	5507	mT
V	696	565	565	T
S	13	56	133	T
T	943	361	1223	T
U	595	78	940	T

BUILDING REACTION				
Design Load	I/S*	O/S [‡]	O/S high^	Unit
V	696	565	565	T
H ₁	145	50	194	T
H ₂	135	43	103	T

BUILDING REACTION				
Design Load	I/S*	O/S [‡]	O/S high^	Unit
TIE	144	80	268	T
M	1935	410	2144	mT
V	953	822	804	T
S	132	28	146	T
T	618	286	622	T
U	347	73	385	T

*:IN SERVICE WIND=20 m/s

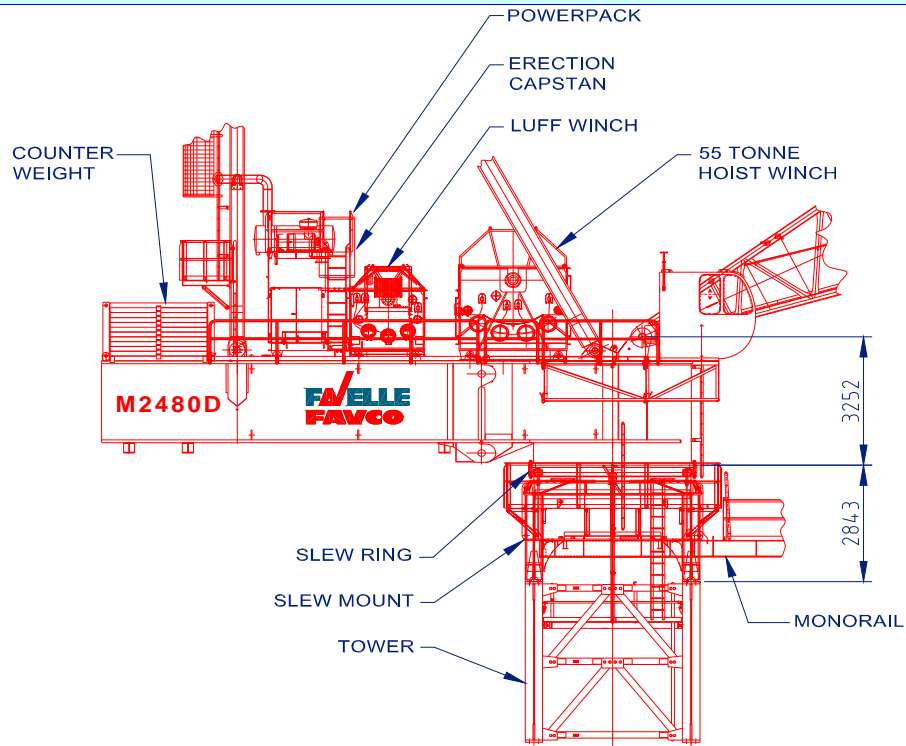
‡:OUT OF SERVICE WIND= 42 m/s

^:HIGH WIND (i.e. CYCLONE)= 65 m/s

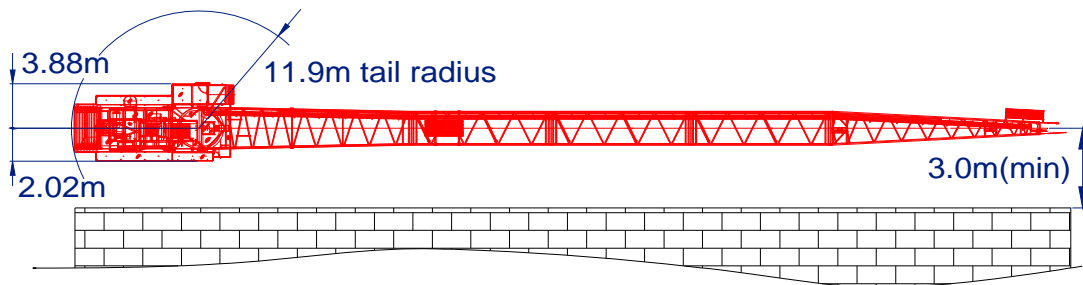
Notes:

1. Structure is designed using permissible stress method. These loads will vary by change of boom length, height and type of tower, actual site wind conditions, no of falls and change of wind speed.
2. To calculate alternative options for M2480D refer to Favelle Favco Design Sheet named "Crane Weight Wind Chart".

MACHINERY DECK ASSEMBLY





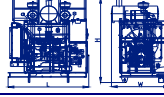

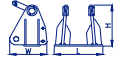



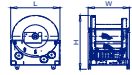
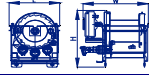



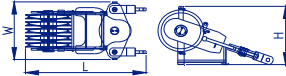
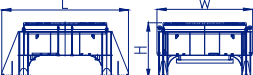
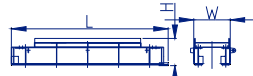

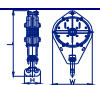
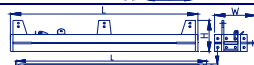




EXTERNAL CLIMBING INSTALLATION CLEARANCE



OUT OF SERVICE CONFIGURATION

Boom Length (m)	Minimum weathervaning*	
	Radius (m)	Angle (°)
27.0	N/A	N/A
36.0	36.7	16
46.0	35.2	44.2
55.0	31.2	58.8
64.0	28	66.9
74.0	25.4	72.1
83.0	23.2	75.7
92.0	23	77.3

*: MINIMUM WEATHERVANING POSITION IS BASED ON THE WIND SPEED OF 20 m/s OR BOOM FLOAT AT 25 m/s

ITEM	QTY	DESCRIPTION	LENGTH L (mm)	HEIGHT H (mm)	WIDTH W (mm)	WEIGHT PER ITEM (kg)	
1	1	SPLIT DECK-FRONT (INCL. SLEW DRIVE, PINS & HANDRAILS)		5242	3472	4050	30597
2	1	SPLIT DECK-REAR		9030	3091	4082	27622
3	1	POWERPACK (INCL. 1400L OF OIL)		4124	3740	2208	8538
4	2	FRONT LEG		16307	665	1516	6508EA
	1	HEAD (INC. SHEAVES)		1279	1813	1720	3172
	2	BACK LEG		14960	462	357	3363EA
	2	BUFFER		4900	250	3800	510
		MAST ASSEMBLY (INC. SHEAVES, HEAD PIN, LADDERS, BUFFER AND PLATFORMS)					25245
5	1	CABIN & PLATFORM ASSEMBLY		4934	3310	2071	1763
6	1	HOIST WINCH ASSY (EMPTY DRUM) (800 m WINCH CAPASITY)		2646	3337	2580	16371
7	1	LUFF WINCH ASSY (EMPTY DRUM)		1850	2383	2479	5928
8	1	BOOM BOTTOM 9.1m		9622	3722	3782	4290
9	1	BOOM TOP 9.2m (INC. DEFLECTOR, SHEAVES & PINS) (PENDANT & PLATFORM)		10414	4047	3782	9900
10	8	BOOM EXTENSION 9.3m AND PENDANT BARS (BRIDLE PLATFORM 400kg)		9493	3951	3782	4794 (5194)
14	1	BRIDLE		2735	1455	1438	2858
15	1	SLEW MOUNT (INCL. PLATFORMS 850Kg)		5500	2639	4142	18559
	1	SLEW RING (INCL. BOLTS)		3856 DIA.	232		6552
	1	MONORAIL (INDICATIVE ONLY)		3440	648	794	1711
		Total					26822
16	1	EXTERNAL CLIMBER (INDICATIVE ONLY)		11 800	1200	4000	34040
17	1	MONORAIL (INDICATIVE ONLY)		7318	2084	1008	3396
18	13	COUNTER WEIGHT - BELOW DECK		2236	140	3400	7904EA
	12	COUNTER WEIGHT - ABOVE DECK		2460	4108		8528EA
							198T
19	1	HOOK - 3/2 FALL (165/110T)		3250	470	1400	4680
20	4	TOWER CHORD		4000	730	880	2420
	1	DIAGONAL BRACE		4475	150	160	124
	8	TOWER BRACE		2960	1995	301	345
	4	TOP BRACE		3996	216	259	112
		TOWER SECTION (INC. LADDER, HAND RAIL, PLATFORM)		4300	4000	4000	14144
21	1	HOIST ROPE (54mm) @ 14.15 kg/m		600 m			8830
22	1	LUFF ROPE (42mm) @ 8.38 kg/m		400 m			3486