
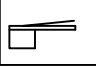
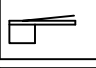
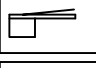
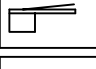


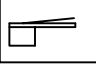
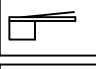
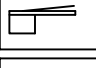




Curve di carico – Courbes de charges – Load diagrams – LastKurven – Curvas de cargas

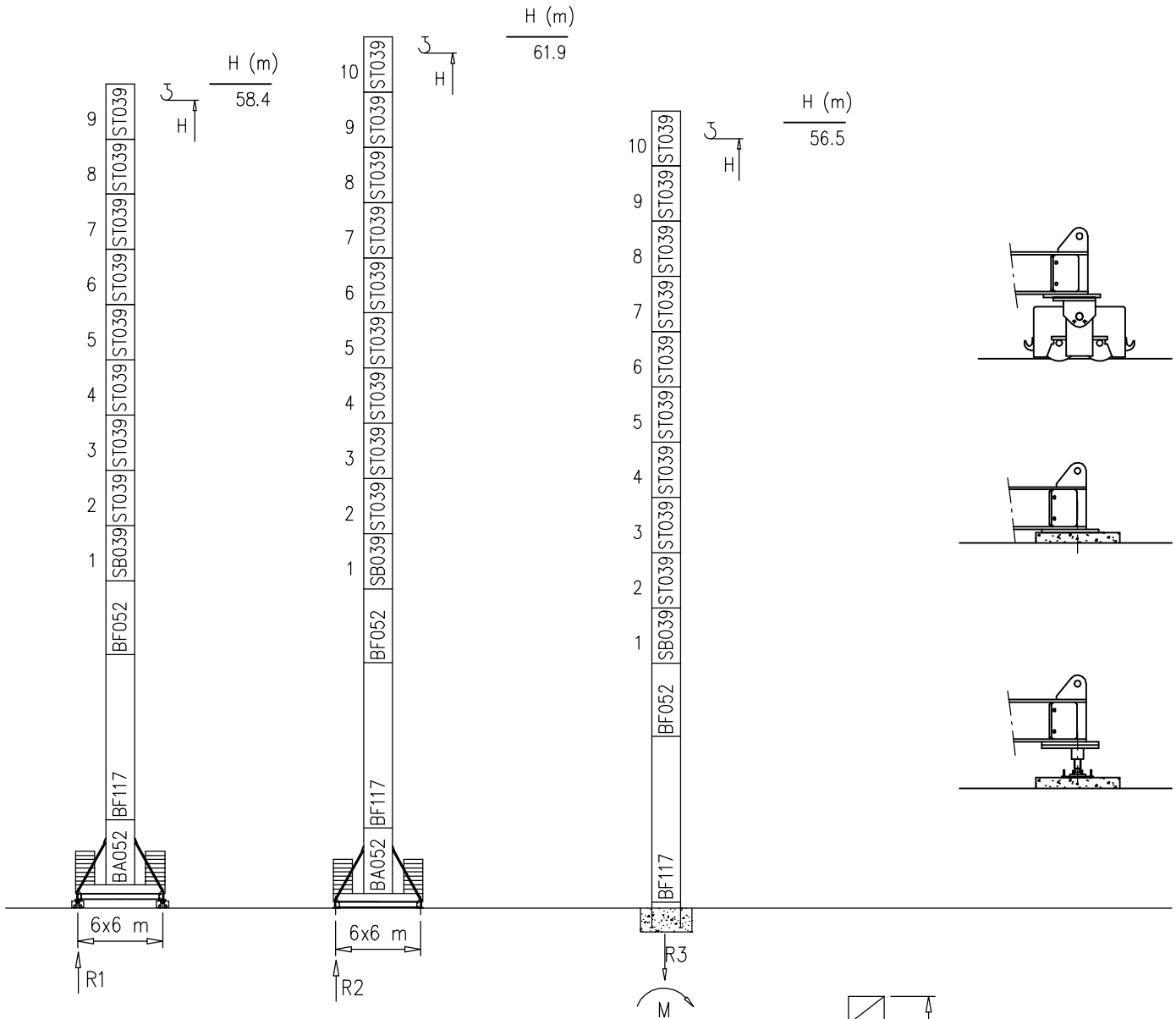
Pmax 6000 kg

	18720 kg	72.7 m	2.7	23.9	25	30	35	40	45	50	55	60	65	70	72.7
			6000	6000	5700	4600	3800	3200	2750	2400	2050	1800	1600	1400	1300
	18720 kg	67.1 m	2.7		26.8	30	35	40	45	50	55	60	65	67.1	
			6000		6000	5330	4500	3900	3420	2930	2500	2150	1900	1800	
	18720 kg	61.5 m	2.7			31.5	35	40	45	50	55	60	61.5		
			6000			6000	5310	4525	3915	3425	3030	2700	2600		
	17160 kg	55.9 m	2.7			33.8	35	40	45	50	55	55.9			
			6000			6000	5730	4980	4400	3840	3400	3050			
	15600 kg	50.3 m	2.7				35.2	40	45	50	50.3				
			6000				6000	5350	4780	4100	3700				
	14040 kg	44.7 m	2.7					36.5	40	44.7					
			6000					6000	5350	4750					

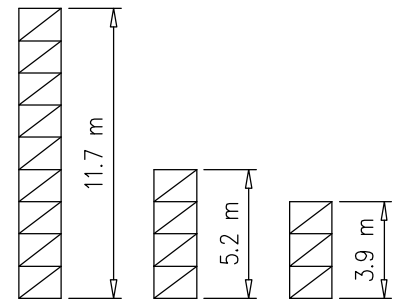
Pmax 12000/6000 kg

	18720 kg	72.7 m	2.7	13.7	15	20	23.9	25	30	35	40	45	50	55	60	65	70	72.7
			12000	12000	10860	7850	6000	5700	4600	3800	3200	2750	2400	2050	1800	1600	1400	1300
	18720 kg	67.1 m	2.7		15.5	20	25	26.8	30	35	40	45	50	55	60	65	67.1	
			12000		12000	10050	7800	6000	5330	4500	3900	3420	2930	2500	2150	1900	1800	
	18720 kg	61.5 m	2.7			17.2	20	25	30	31.5	35	40	45	50	55	60	61.5	
			12000			12000	10400	8100	6550	6000	5310	4525	3915	3425	3030	2700	2600	
	17160 kg	55.9 m	2.7				17.8	20	25	30	33.8	35	40	45	50	55	55.9	
			12000			12000	10900	8550	6800	6000	5730	4980	4400	3840	3400	3050		
	15600 kg	50.3 m	2.7					18.5	20	25	30	35.2	40	45	50	50.3		
			12000			12000	11200	9100	7600	6000	5350	4780	4100	3700				
	14040 kg	44.7 m	2.7						19	20	25	30	35	36.5	40	44.7		
			12000			12000	11400	9700	8200	6800	6000	5350	4750					

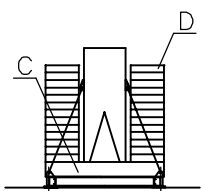
S2050



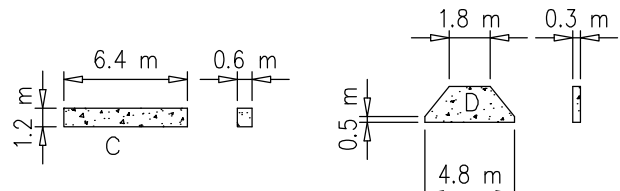
H=50–62 m	
R1	174 t
R2	181 t
R3	119 t
M	637 tm



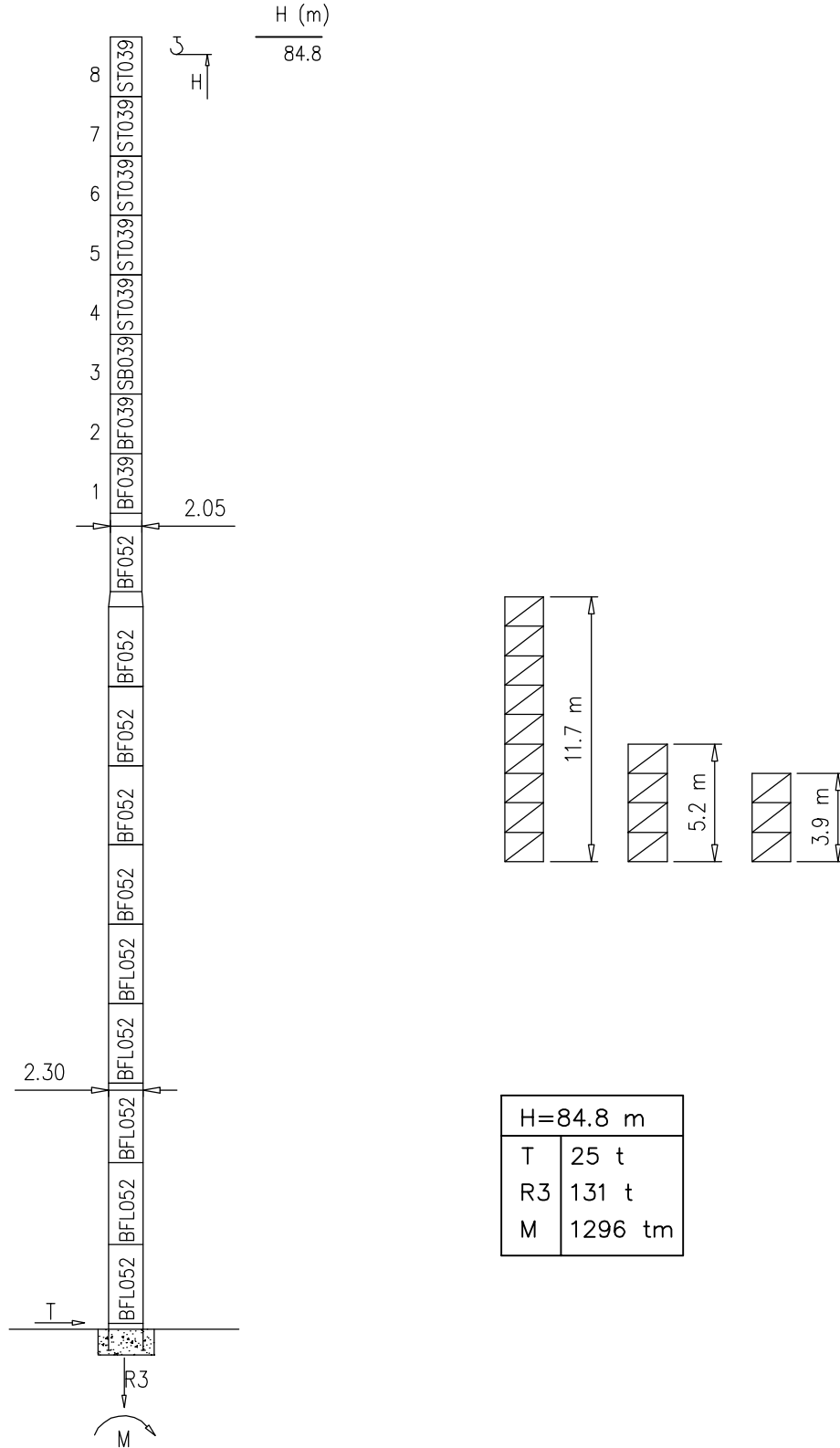
Peso zavorra – Ballast weight – Poids du lest – Ballastgewicht – Peso de lastre



H	n°	Tot.
50–62 m	4C+22D	132740 kg



S2300/S2050

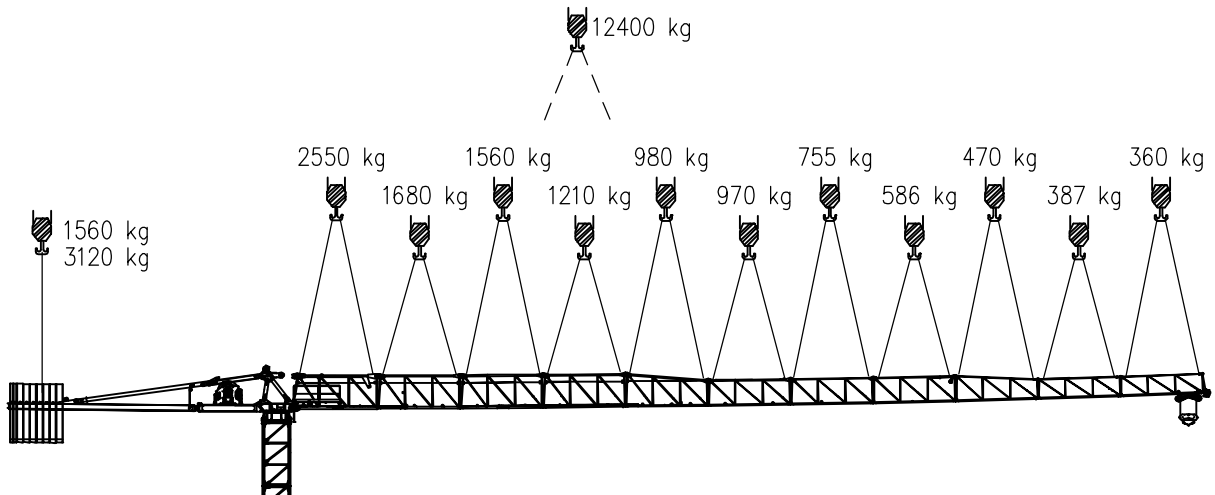
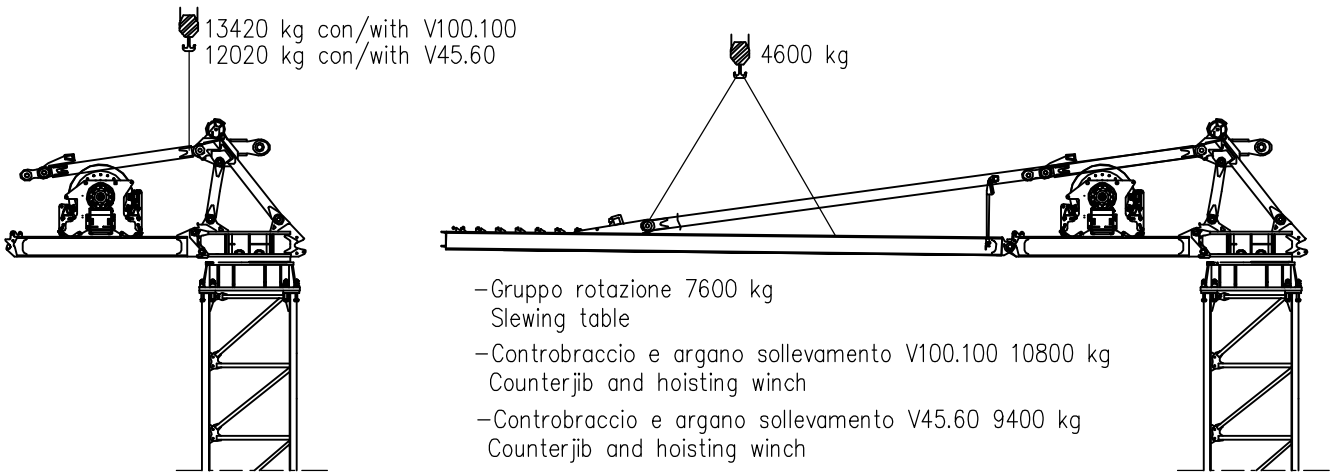
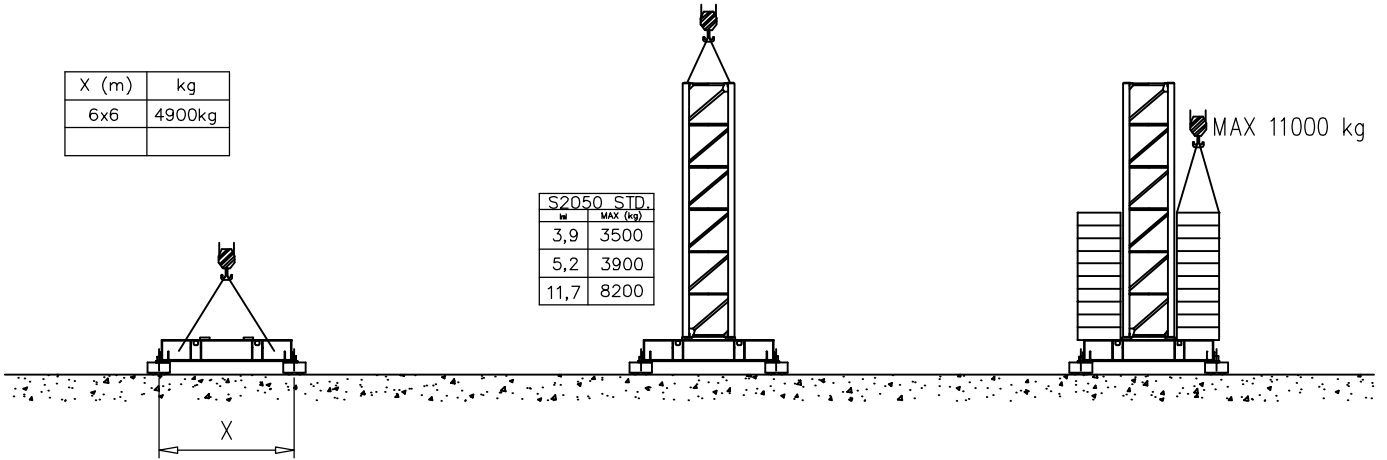


H=84.8 m	
T	25 t
R3	131 t
M	1296 tm

Montaggio – Montage – Erection – Montage – Montaje – Montagem

X (m)	kg
6x6	4900kg

S2050 STD.	
H	MAX (kg)
3,9	3500
5,2	3900
11,7	8200



Meccanismi – Mechanisms – Mécanismes – Antriebe – Mecanismos

Meccanismi – Mechanisms – Mécanismes – Antriebe – Mecanismos

Sollevamento V45.60 Hoisting Elevaciòn			1a	2 m/min	6000 kg	33 kW	V45.60 57 kVA
			2a	20 m/min	6000 kg		
			3a	31 m/min	5000 kg		
			4a	46 m/min	3600 kg		
			5a	60 m/min	2600 kg		
			1a	2 m/min	12000 kg		
			2a	22 m/min	12000 kg		
			3a	34 m/min	10000 kg		
			4a	41 m/min	7200 kg		
			5a	50 m/min	5200 kg		
Sollevamento V100.100 Hoisting Elevaciòn			1a	5 m/min	6000 kg	75 kW	V100.100 110 kVA
			2a	48 m/min	6000 kg		
			3a	72 m/min	4000 kg		
			4a	88 m/min	3000 kg		
			5a	100 m/min	2600 kg		
			1a	2.5 m/min	12000 kg		
			2a	24 m/min	12000 kg		
			3a	36 m/min	8000 kg		
			4a	44 m/min	6000 kg		
			5a	50 m/min	5200 kg		
Carrello Trolleying Distribuciòn			1a	5 m/min	12000 kg	5.5 kW	Potenza elettrica necessaria Puissance électrique nécessaire Necessary electric power Anschlusswert – Potencia
			2a	40 m/min	12000 kg		
			3a	80 m/min	6000 kg		
Rotazione Slewing Orientaciòn			1a	0 → 0.2	giri/min tr/min rp/min	6.6 kW @ 1200rpm n° 3 x 2.2 kW	
			2a	0 → 0.6			
			3a	0 → 0.9			
Traslazione Travelling Traslaciòn			1a	0 → 5	9 kW		
			2a	0 → 20			

Rete elettrica – Réseau – Mains supply – Netzstrom – Red – Rede electrica

400V – 50 Hz



FMgru s.r.l.

via Emilia 11-29010 Pontenure PC ITALY  
tel. 0523/510446 ric.aut. fax 0523/510365  
www.fmgru.com e-mail: info@fmgru.com

FEM 1.001  
2000/14/CE



Documento commerciale non contrattuale  
Per tutte le informazioni tecniche riferirsi  
alle corrispondenti istruzioni

Unverbindliches Vertriebsdokument.  
Für technische Informationen, siehe die  
entsprechenden Anweisungen.

This commercial document is not legally  
binding. For any technical information, please  
refer to the corresponding instructions.

Documento comercial no contractual  
Para cualquier información técnica,  
ver la noticia correspondiente.

Code: 15/CA37T60A0		
Ed.	Data	Rev Data
1	15.05.09	0 15.05.09