

**NOMINAL TARE: (C/WEIGHT REAR)**  
 FRONT : 9850 kg  
 REAR : 14040 kg  
 TOTAL : 23900 kg

**NOMINAL TARE: (C/WEIGHT FRONT)**  
 FRONT : 11900 kg  
 REAR : 12000 kg  
 TOTAL : 23900 kg

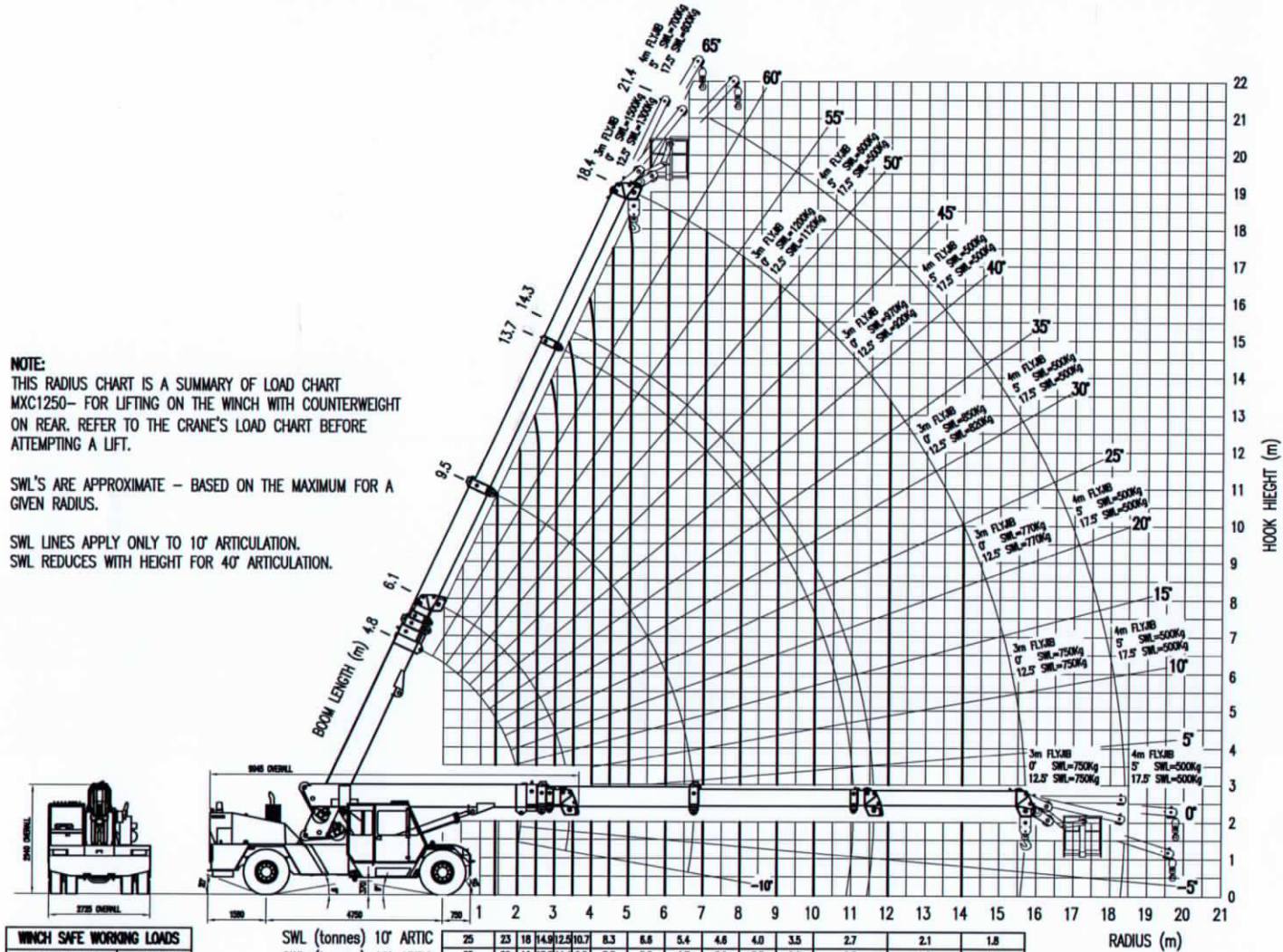
TURNING RADIUS : 7900mm  
 WIDTH : 2720mm

UNLESS OTHERWISE STATED ALL WELDING TO AS1954 CATEGORY SP AND ALL DIMENSIONS IN (mm) & TOLERANCED TO LIMITS SHOWN.					AS 1100	DATE	11/02/04
					DO NOT SCALE	DRN	SR
					SHEET SIZE	CKD	
					SCALE	APPD	
					Title		DRG No.
					MAC 25 WITH OM906 & MD3060		MC25-A-1-055
					MAC 25 CRANE		REV
							-

**NOTE:**  
THIS RADIUS CHART IS A SUMMARY OF LOAD CHART  
MXC1250- FOR LIFTING ON THE WINCH WITH COUNTERWEIGHT  
ON REAR. REFER TO THE CRANE'S LOAD CHART BEFORE  
ATTEMPTING A LIFT.

SWL'S ARE APPROXIMATE - BASED ON THE MAXIMUM FOR A  
GIVEN RADIUS.

SWL LINES APPLY ONLY TO 10° ARTICULATION.  
SWL REDUCES WITH HEIGHT FOR 40° ARTICULATION.



WINCH SAFE WORKING LOADS	
SINGLE PART	4200 KG
TWO PARTS	8400 KG
FOUR PARTS	16800 KG
SIX PARTS	25000 KG

SWL (tonnes) 10° ARTIC	25	23	18	14.9	12.5	10.7	8.3	6.8	5.4	4.8	4.0	3.5	2.7	2.1	1.8
SWL (tonnes) 40° ARTIC	25	20	16	13.1	11.1	9.5	7.3	5.8	4.7	3.9	3.3	2.8	2.3	1.8	1.5

B		UPDATED	SR	YES	16/07/04	UNLESS OTHERWISE STATED ALL WELDING TO AS1554 CATEGORY SP AND ALL DIMENSIONS IN (mm) & TOLERANCED TO LIMITS SHOWN				AS 1100 DO NOT SCALE		DATE	16/07/04		
A		40° SLEW ADDED	MW	YES	20/12/99	NOMINAL SIZE	UP TO 150	ABOVE 150 UP TO 300	ABOVE 300 UP TO 1000	ABOVE 1000	SHEET SIZE	DRN	SR		
REV		CHANGE DETAILS	CHG No.	BY	INTER	MACHINING	±0.1	±0.25	±0.5	±1.0	A3	CKD			
					DATE	FABRICATION	±0.5	±1.0	±1.5	±2.5	SCALE	1:125	APPD		
<b>FRANNA CRANES</b> PTY LTD <small>A.C.N. 010 671 048</small> <small>MOBILE CRANE MANUFACTURERS</small>											Title <b>LOAD CHART PICTORIAL MAC 25 CRANE</b>		DRG No. <b>MC25-A-1-017</b>		REV <b>B</b>

THIS DRAWING SHALL REMAIN THE SOLE PROPERTY OF FRANNA CRANES PTY. LTD. & MUST NOT BE COPIED OR DISCLOSED WITHOUT THEIR WRITTEN APPROVAL. PRODUCT No. : MXA1017B