

QUY100A

液压履带式起重机

HYDRAULIC CRAWLER CRANE



抚顺挖掘机制造有限责任公司
FUSHUN EXCAVATOR CORPORATION LTD.

Courtesy of Crane.Market

QUY100A

液压履带式起重机

HYDRAULIC CRAWLER CRANE





- 充分吸收国外的先进技术,外形美观,工作环境舒适优雅。底座与履带架由动力销和固定销共同连接。主、副提升,变幅机构采用内藏式减速机马达。平台上部机罩为半开放式,便于观察与维护。
- 动力部分采用的是美国康明斯公司生产的 QSL-9 电控中冷型发动机。主要液压件均采用博士力士乐进口件。最大起重能力 100 吨。主臂长度为 16-73 米,同时有加长臂,固定副臂等多种臂架供用户选择。
- 广泛用于交通、能源、水利、土木工程和军事工程等方面。
- 开创了国内液压履带式起重机同机型发展的新时代。
- QUY100 Hydraulic Crawler Crane is researched and developed independently on the basis of sucking in foreign advanced technology. It has handsome outline, advanced structure, comfortable and graceful working environment. Undercarriage and side frames are connected combining with drive pins and fixed pins. The internal-mounted reducers are applied on the main hoist, auxiliary hoist and boom hoist devices. Semi-open hood on the platform is convenient for inspecting and maintaining.
- Power unit equipped on this machine adopts Cummins QSL-9 electric control inter-cooling engine which is made in USA. Imported main hydraulic components from Rexroth, Bosch Group. Max. lifting capacity is 100 tons. Main boom length is from 16m to 73m. Aux. jib, fixed jib, tower jib and light boom are optional for the customers.
- This machine is widely used in transportation, energy sources, water conservancy, construction and military affairs project.
- It creates a new age of the same kind of hydraulic crawler crane development in China.



功能简介

Function brief introduction

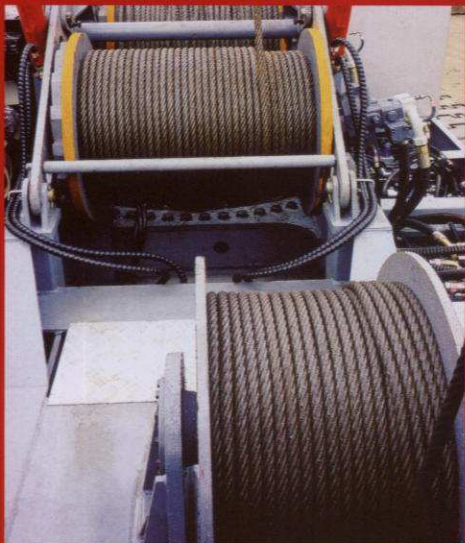
- 发动机是美国康明斯公司生产的 QSL-9 电控中冷发动机, 功率 209KW, 转速 2000rpm。该发动机的特点是: 体积小、马力大、满足非公路用车欧洲第 3 阶段排放标准要求。

QSL-9 engine is manufactured by Cummins USA. It is electric control inter cooling engine with output power of 209kw and speed of 2000rpm. The characteristics of this engine are compact structure and excellent power. It can reach to Euro II standard for Off-Highway vehicle.



- 主卷扬, 副卷扬及变幅机构均采用内藏减速机, 常闭免维护型制动器。

Main hoisting winch, auxiliary hoisting winch and boom hoisting winch are all equipped with internal-mounted reducers and normal-closed free-maintenance brakes.

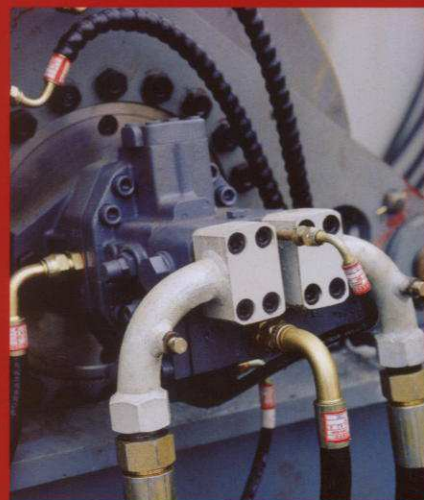


- 主、副卷扬均采用折线式绳槽卷筒和变量马达驱动, 绳速高, 微速性能好, 与平台采用挂式连接。

Main hoisting winch and auxiliary hoisting winch are Lebus type drove by variable displacement motor with high rope speed and excellent performance of slow speed. They are connected to the platform with pins.

- 平台的布置采用半开式走台的方式, 便于用户观察与维修。

Half-opened platform is convenient for inspection and maintenance.



- 底座与履带架采用铰接式结构, 由动力销和固定销共同连接。动力销油缸驱动, 便于安装和拆卸。行走减速机构采用内藏减速机和马达, 通过性好。

Undercarriage and side frames connection are hinge joint type. They are connected with drive pins which driven by cylinders and fixed pins. Propelling structure is equipped with internal-mounted reducer and motor with excellent passing performance.

- 液压系统是开式回路, A8VO140 主泵, A6VE160、A2FE80 马达, M7 阀, 负荷传感控制。

Open type hydraulic system. A8VO140 main pump. A6VE160/A2FE80 motor. M7 main valve. Load sense control.

- 回转系统是闭式的, 操纵阀直接控制变量泵的摆角, 运行平稳, 微速性能好。

Close type swing system. Control valve controls the angle of variable pump directly with a smooth running and excellent slow speed.







起重臂下严禁站人

QUY100A

FW.CHINA

公明机械有限公司
FAC 11000000
FAC 11000000
FAC 11000000

安全装置

Safety devices

■ 设有安全装置，故障诊断装置。采用警灯警示，具有声光报警功能。主、副钩过卷防止装置，主臂过卷防止装置。

主、副卷扬及变幅机构设有棘爪安全装置。

故障诊断开关：用此开关配合指示灯指示故障代码。确定发动机故障原因。

具有停机、保养维护和低温预热启动报警功能。故障诊断数据通讯采用 CAN-busJ1578 协议。

发动机数据通讯采用 CAN-busJ1939 协议——传送转速、机油压力、机油温度、水温温度等通讯信号。

■ This machine is equipped with warning light. It has the functions of sound and light warning.

Main and auxiliary hook are equipped with hook over hoisting preventive device. Main boom is equipped with boom over hoisting preventive device.

Main, auxiliary winch and boom hoisting structure are equipped with pawl.

Fault diagnose switch: fault code will be shown with the cooperation of this switch and indicator light to confirm the reason of engine fault.

Warning functions include engine stop, maintenance and engine warm-up etc.. Fault diagnose data message adopts CAN-bus 1578 agreement.

Engine data message adopts CAN-busJ1939 agreement - transmit message signal of rotational speed, oil pressure, oil temperature and water temperature etc..

■ 采用 CAN - bus 总线进行数据传送 (J1939 协议)，由力矩限制器进行数据接收，用限制器显示屏来显示。

监视器及车载 VCD 系统。

风速仪采用 LCD 显示器显示风速。

■ Data transfer adopts CAN-bus (J1939 agreement). The data is transferred to Moment Limiter and shown on the display of moment limiter.

Monitor and vehicle mount VCD.

Anemoscope has LCD display.

■ 采用了与交通信号相同的 3 色负载指示灯。

为了便于现场人员了解机械载荷情况，采用了与交通信号相同的 3 色负载指示灯。同时配备了司机与吊装指挥人员联系用的对讲机。

■ Three-color load indicator light

For the convenience of knowing load capacity on-site, load indicator light adopts three-color light which is the same as traffic light.

Operator and instruction man are all equipped with interphones for the convenience of communication.

■ 发动机数据显示内容：

Engine data are as follows

a. 转速 Rotational speed (0~3000rpm)

b. 机油压力 Oil pressure (0~1Mpa)

c. 机油温度 Oil temperature (60°C~140°C)

d. 水温温度 Water temperature (40°C~120°C)

e. 工作计时 (5 位显示) Working time (5 digit)

f. 机油油位低 (报警) Low oil level (warning)

g. 机油油位高 (报警) High oil level (warning)

h. 水温温度高 (报警) High water temperature (warning)

附带显示 Additional display:

a. 伺服系统压力 Servo system pressure (0~10Mpa)

b. 燃油油位 Fuel level (0-1/4-1/2-3/4-1)

系统电压 System voltage (18~36 V)



操作舒适

Comfortable operation

提供美观和舒适的工作空间。

扩大了前方视野。

采用了扶手椅式控制手柄，能够以舒适的姿势进行操作。

配置了空调装置，使司机能够在舒适温度下工作。

Provide handsome and comfortable working space.

Large front view.

The control lever is arm chair type. It will provide comfortable operation posture.

The cab is equipped with air conditioner. The operator can work at suitable temperature.





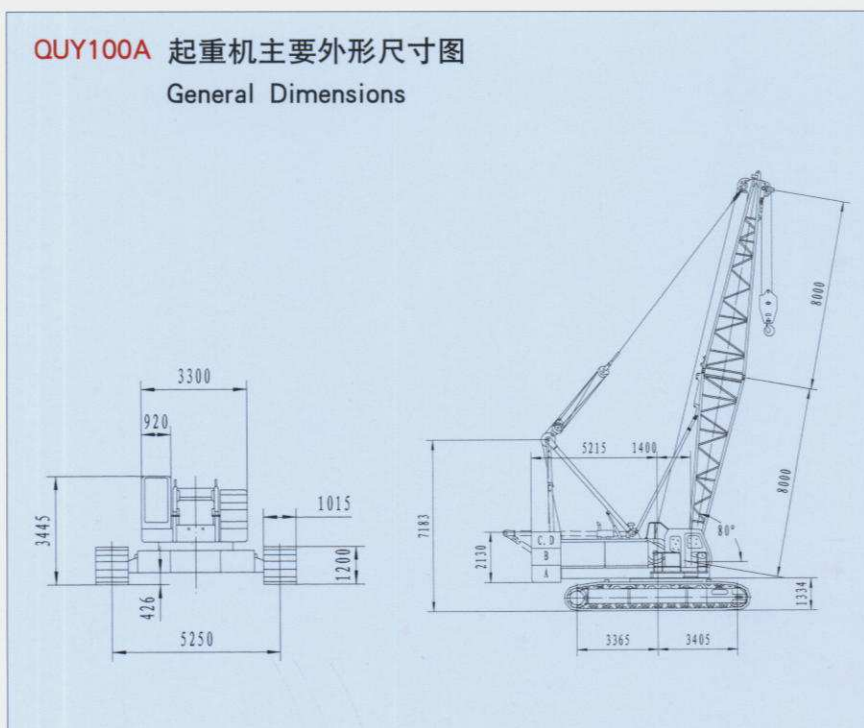
技术参数

Specifications

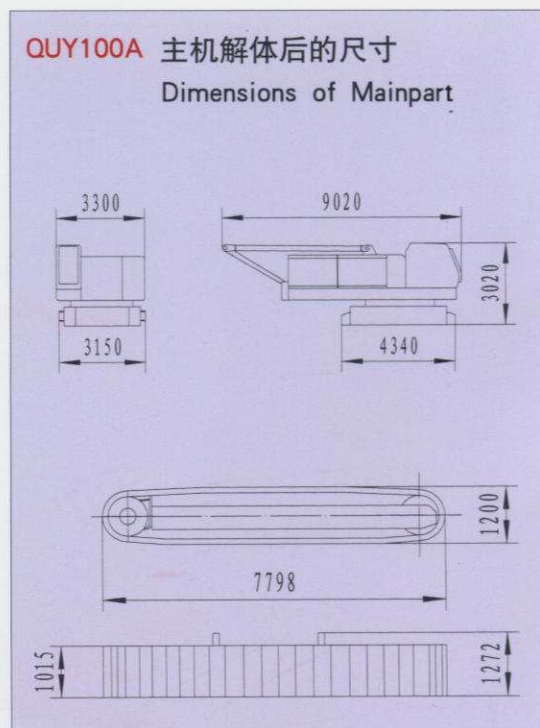
QUY100A 主要技术参数 Technical data

项 目 Item	数值 Data	单位 Unit	项 目 Item	数值 Data	单位 Unit
最大起重量 Max. Machine weight	100	t	回转速度 Slewing Speed	0~1.96	rpm
主臂长度 Length of Main Boom	16~73	m	行走速度 Travel Speed	1.3/0.9	km/h
主臂加副臂最大长度 Length of Main Boom+Fly Jib	61+25	m	爬坡能力 Gradeability	30	%
起重臂变幅角度 Boom Hoist Angle	30~80	°	柴油机额定输出功率 Engine Output	209/2000	QSL9 KW/rpm
提升钢绳速度※ Hook Hoisting Speed	高(H) 116/58 低(L) 80/40	m/min	主提升倍率 Main Hoisting line parts	12	
下降钢绳速度※ Hook Lowering Speed	高(H) 116/58 低(L) 80/40	m/min	接地比压 Ground Pressure	0.07	Mpa
起重臂上升钢绳速度※ Boom Hoisting Speed	※ 54	m/min	整机质量 Max. Machine weight	103	t
起重臂下降钢绳速度※ Boom Lowering Speed	※ 54	m/min	配重质量 Counter Weight	34	t
起重力矩 Lifting Torque	550	t·m			

QUY100A 起重机主要外形尺寸图
General Dimensions



QUY100A 主机解体后的尺寸
Dimensions of Mainpart



QUY100A 主臂额定起重性能表 Load Chart of QUY100A with Standart Boom Configuration

单位 Unit: t

工作半径 (M) Working radius	16.0	19.0	22.0	25.0	28.0	31.0	34.0	37.0	40.0	43.0	46.0	49.0	52.0	55.0	58.0	61.0	64.0	67.0	70.0	73.0		
主臂长度 (M) Boom length	100	100	90.3																			
5																					5	
5.5																					5.5	
6	87.1	83.9	80.9	77																	6	
7	70.1	67.8	65.8	63.8	61.9	58.9	52.6														7	
8	58.6	56.9	55.3	53.8	52.4	50.9	49.6	47.2	42.7												8	
9	49.2	48.9	47.7	46.5	45.3	44.2	43.1	42	40.9	39	35.7										9	
10	42.3	42.1	41.9	40.9	39.9	38.9	38	37.1	36.2	35.4	34.5	32.7	30.2	27.9							10	
12	32.9	32.7	32.6	32.4	32.1	31.3	30.6	30	29.2	28.6	28	27.3	26.6	26	25.4	24	22.3	20.7			12	
14	26.8	26.6	26.5	26.3	26.2	26	25.6	25	24.4	23.9	23.4	22.8	22.3	21.8	21.2	20.6	20.2	19.6	19		14	
16	23.7	22.3	22.2	22	21.9	21.7	21.5	21.3	20.8	20.4	20	19.5	19	18.6	18.1	17.6	17.2	16.7	16.2	15.7	16	
18		19.2	19.1	18.9	18.7	18.5	18.4	18.2	18	17.8	17.3	16.9	16.5	16.1	15.7	15.2	14.9	14.4	14	13.5	18	
20			16.6	16.4	16.3	16.1	15.9	15.8	15.6	15.5	15.3	14.8	14.5	14.1	13.7	13.3	13	12.6	12.2	11.8	20	
22			16	14.5	14.3	14.1	14	13.8	13.7	13.6	13.4	13.2	12.8	12.5	12.2	11.8	11.5	11.1	10.7	10.3	22	
24				13.5	12.8	12.6	12.4	12.3	12.1	12	11.9	11.7	11.5	11.2	10.9	10.5	10.2	9.9	9.5	9.1	24	
26					11.6	11.3	11.1	11	10.8	10.7	10.6	10.4	10.2	10.1	9.8	9.4	9.2	8.8	8.5	8.1	26	
28						10.2	10	9.9	9.7	9.6	9.4	9.3	9.1	9	8.8	8.5	8.2	7.9	7.6	7.3	28	
30							9.1	8.9	8.7	8.7	8.5	8.3	8.2	8.1	7.9	7.7	7.4	7.1	6.8	6.5	30	
32							8.6	8.1	7.9	7.7	7.7	7.5	7.4	7.3	7.1	6.9	6.8	6.4	6.1	5.8	32	
34							7.5	7.2	7.1	7.1	7	6.8	6.6	6.6	6.4	6.2	6.1	5.8	5.6	5.2	34	
36									6.5	6.5	6.4	6.2	6	5.9	5.8	5.6	5.5	5.3	5	4.7	36	
38										5.8	5.8	5.6	5.5	5.4	5.2	5	5	4.8	4.6	4.3	38	
40											5	5	5	4.9	4.7	4.5	4.5	4.3	4.1	3.8	40	
42												4.7	4.5	4.4	4.3	4.1	4	3.8	3.7	3.5	42	
44												4.3	4.1	4	3.9	3.7	3.6	3.4	3.3	3.1	44	
46													3.8	3.7	3.5	3.3	3.2	3.1	2.9	2.7	46	
48													3.6	3.3	3.2	3	2.9	2.7	2.6	2.4	48	
50														3.1	2.9	2.7	2.6	2.4	2.3	2.1	50	
52															2.6	2.4	2.3	2.1	2	1.8	52	
54																2.1	2.1	1.9	1.7	1.5	54	
56																	1.7	1.6	1.5	1.3	56	
58																		1.2	1.2	1.1	58	
60																			1	0.9	60	
62																				0.8	0.7	62
64																					0.5	64

抚顺挖掘机制造有限责任公司

地址：辽宁省抚顺市顺城区双阳路2号

邮编：113126

<http://www.cnfuwa.com>

销售公司电话：+86-413-7647 989/7642 419

传真：+86-413-7642 419

售后服务中心电话：+86-413-7641 727

电子信箱：sale@cnfuwa.com

进出口公司电话：+86-413-7649 117/7642 766

传真：+86-413-7642 766

电子信箱：export@cnfuwa.com

免费服务电话：800-890-0009

FUSHUN EXCAVATOR CORPORATION LTD.

Add:No.2 Shuangyang Road, Shuncheng District, Fushun
Liaoning, China

p.c. 113126

<http://www.cnfuwa.com>

China Market Sale Dept. Tel: +86-413-7647 989 / 7642 419

Fax: +86-413-7642 419

After sale Service Dept. Tel: +86-413-7641 727

E-mail: sale@cnfuwa.com

Import & Export Dept. Tel: +86-413-7649 117 / 7642 766

Fax: +86-413-7642 766

E-mail: export@cnfuwa.com

Free Service Tel: 800-890-0009

技术参数如有更改恕不另行通知

Specifications may vary without prior notice