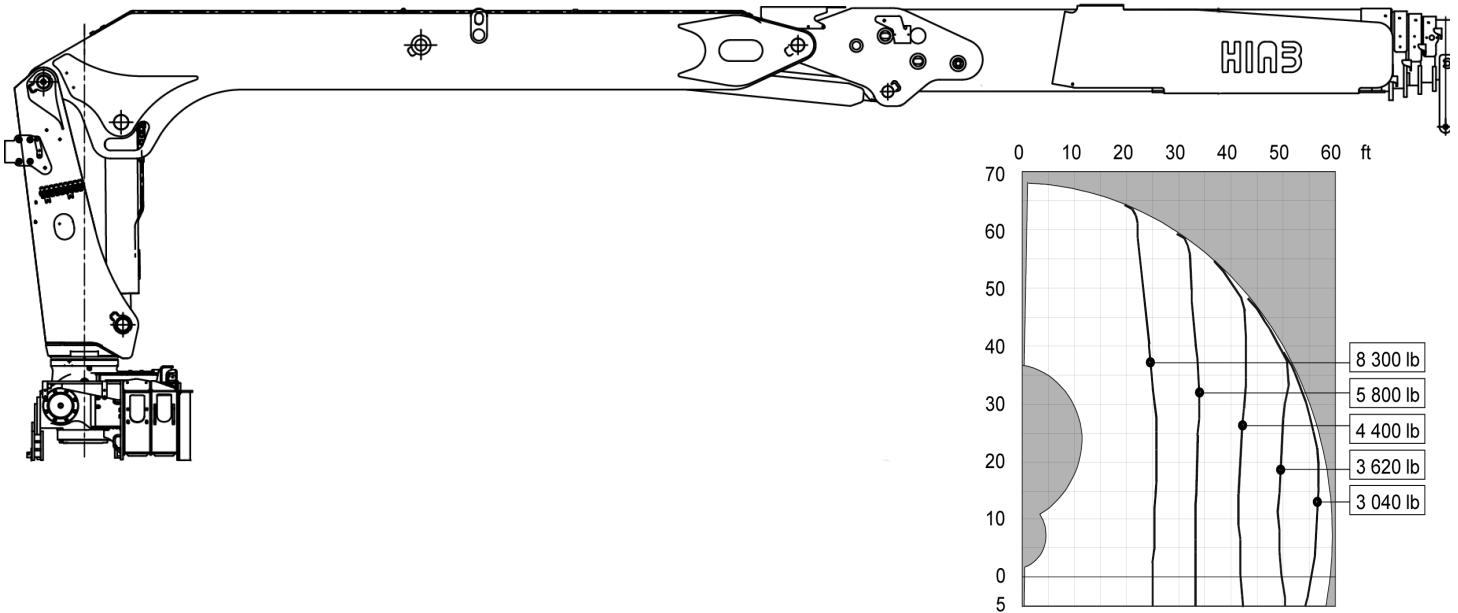


HIAB 335K



HIAB 335K BASIC DATA

TECHNICAL DATA	335K-4 PRO	335K-4 HIPRO
Max. lifting capacity (ft-lbs)	192 540	208 740
Outreach, hydraulic extensions (ft)	59' 5"	59' 5"
Outreach, manual extensions (ft)	-	-
Outreach, with jib (ft)	-	-
Outreach / lifting capacity (ft-lbs)	25' 3" - 7 500	25' 3" - 8 270
	33' 2" - 5 290	33' 2" - 5 840
	41' 4" - 4 010	41' 4" - 4 410
	48' 11" - 3 260	48' 11" - 3 620
	56' 9" - 2 760	56' 9" - 3 040
Outreach / lifting capacity, with jib (ft-lbs)	-	-
Slewing angle (°)	460	460
Height in folded position (in)	111	111
Width in folded position (in)	98	98
Installation space needed (in)	45	45
Weight, "standard" crane without stabilizers (lbs)	10 210	10 300
Weight, stabilizer equipment (lbs)	1 460	1 460
Weight, jib (lbs)	-	-



Disclaimer. Hiab cranes have been built to meet the highest standards of safety and service life and have been thoroughly tested. Strength calculations for this model have been carried out in accordance with EN13001 in fatigue class S2. Cargotec's certified Quality Assurance System complies with ISO 9001. Some of the items in our literature may be extra equipment. Certain applications may require an official permit. We reserve the right to change technical specifications without prior notice. Hiab cranes produced for EU-countries are CE marked and comply with the European Standard EN12999.

Hiab is the world's leading provider of on-road load handling equipment. Our high performance product range includes loader cranes, forestry and recycling cranes, demountables, truck-mounted forklifts and tail lifts. We aim to set the industry benchmark for customer satisfaction by providing products and services that meet customer needs globally.

www.hiab.us.com
 Hiab is part of Cargotec.
 www.cargotec.com

Hiab USA, Inc
 12233 Williams Road
 Perrysburg, OH 43551 USA
 tel. +419 482 6000
 fax. +419 482 6001