

GEHL®

RS9-50 GEN:2

TELESCOPIC HANDLER

PREVIEW



KEY FEATURES

- ✓ 9,000 lbs. (4082 kg) maximum lift capacity
- ✓ 50'1" (15.3 m) maximum lift height
- ✓ 5,000 lbs. (2268 kg) lift capacity to 50'0" (15 m)
- ✓ 120 hp Cummins diesel engine
- ✓ 4-Speed Powershift
- ✓ Foam-filled 14.00 x 24 tires
- ✓ Aux Hydraulic Line Standard
- ✓ No Outriggers

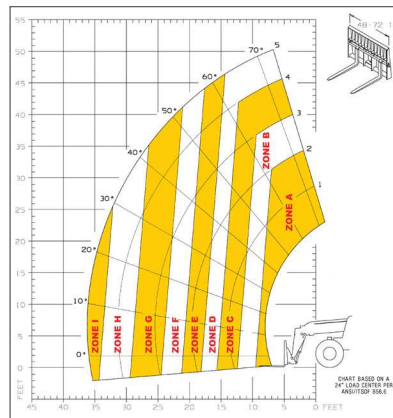


SPECIFICATIONS

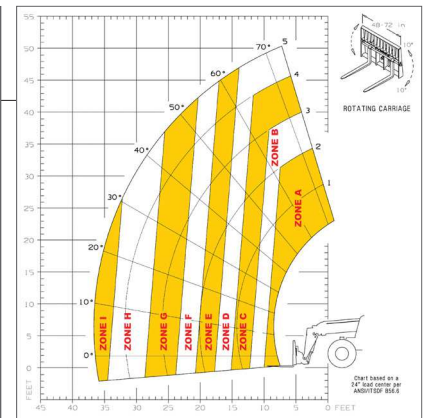
DIMENSIONS	Approximate Weight (kg)	29,900 lbs. (13,562)
	Length - Less Forks (m)	21'0" (6.4)
	Width (m)	8' 3" (2.53)
	Ground Clearance (mm)	18" (457)
	Wheelbase (m)	10' 4" (3.15)
	Turn Radius (m)	13' 11" (4.24)
	Overall Height (m)	8' 6" (2.59)
	Frame Leveling	± 10°
	Fuel Capacity (L)	47 gal. (178)
Standard Tires	14.00 x 24 Foam-filled	
TRANSMISSION	Transmission	Dana
	Type	4-Speed Powershift
	Max. Speed (km/h)	20.1 mph (32.3)
	Steering	4-Wheel, 2-Wheel, crab
	Brakes	4 Wheel Inner Wet Disc
	Parking Brake	SAHR
ENGINE	Axles	Dana
	Engine	Cummins
	Model	QSF 3.8
	Power (kW)	120 hp (89)
	Torque (Nm)	360 ft.-lbs (488)
	Speed	2500 rpm
HYDRAULICS	Tier	Tier IV
	Hydraulic Pump	Gear
	Pump Capacity (L/min)	41.5 gpm (157)
	System Pressure (bar)	3,000 psi (207)
PERFORMANCE	Hydraulic System Capacity (L)	31 gal (117.3)
	Lift Capacity (kg)	9,000 lbs. (4082)
PERFORMANCE	Max. Lift Height(m)	50' 1" (15.3)
	Capacity at Max. Lift Height (kg)	5,000 lbs. (2268)
	Max. Forward Reach (m)	36' 7" (11.1)
	Capacity at Max. Forward Reach (kg)	500 lbs. (227)

STANDARD FEATURES

- 3 Steering Modes - Front Wheel, All Wheel and Cab
- 4 Speed Powershift Transmission
- DYNATTACH® Quick Attachment System
- Four Wheel Wet Disc Brakes
- Frame Leveling - 10° (Left or Right)
- Full Time Four Wheel Drive
- Left Hand Front Fender
- Planetary Axles with Limited Slip Front Differential
- Power Steering
- Rear Axle Stabilizer
- SAHR Parking Brake
- Transmission Clutch Cut-Out
- 12 Volt Electrical System
- Backup Alarm
- Backup Light
- Brake Lights
- Multi-Function Engine Diagnostic Display
- Automatic Self-Leveling Fork System
- Auxiliary Hydraulic System
- Boom Control Joystick
- Fork Tilt and Frame Level Joystick
- Lockable Tool Box
- Single Key Start
- Right Hand Side Mounted Rear View Mirror
- Power Port



A	9,000 lbs. (4082 kg)	F	3,000 lbs. (1361 kg)
B	8,000 lbs. (3629 kg)	G	2,000 lbs. (907 kg)
C	6,000 lbs. (2722 kg)	H	1,000 lbs. (454 kg)
D	5,000 lbs. (2268 kg)	I	500 lbs. (227 kg)
E	4,000 lbs. (1814 kg)		



A	9,000 lbs. (4082 kg)	F	3,000 lbs. (1361 kg)
B	8,000 lbs. (3629 kg)	G	2,000 lbs. (907 kg)
C	6,000 lbs. (2722 kg)	H	1,000 lbs. (454 kg)
D	5,000 lbs. (2268 kg)	I	500 lbs. (227 kg)
E	4,000 lbs. (1814 kg)		



SPECIFICATIONS ARE PRELIMINARY

Gehl reserves the right to add improvements or make changes in features and specifications at any time without notice or obligation.

Gehl reminds users to read and understand the operator's manual before operating any equipment. Also, make sure all safety devices and shields are in place and functioning properly.