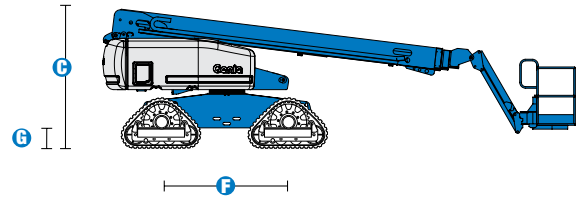
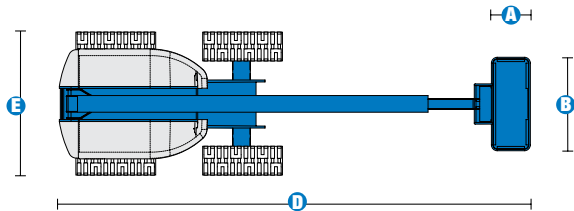
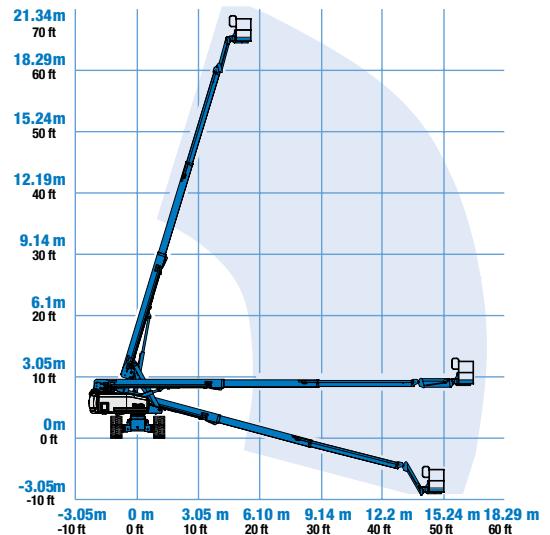


Specifications



MODEL		S™-65 Trax	
MEASUREMENTS		Metric	US
Working height maximum*		21.86 m	71 ft 2 in
Platform height maximum		19.86 m	65 ft 2 in
Horizontal reach maximum		17.10 m	56 ft 2 in
Below ground reach		2.67 m	8 ft 9 in
A Platform length		0.91 m	3 ft
B Platform width		2.44 m	8 ft
C Height - stowed		2.77 m	9 ft 1 in
D Length - stowed		9.50 m	31 ft 2 in
Length - transport (jib tucked under)		7.60 m	25 ft
E Width		2.50 m	8 ft 2.5 in
F Wheelbase		2.50 m	8 ft 2.5 in
G Ground clearance - centre		0.43 m	1 ft 5 in

RANGE OF MOTION S™-65 Trax



PRODUCTIVITY		
Lift capacity	227 kg	500 lbs
Platform rotation	160°	160°
Vertical jib rotation	135°	135°
Turntable rotation	360° continuous	
Turntable tailswing	1.22 m	4 ft
Drive speed - stowed	3.7 km/h	2.3 mph
Drive speed - raised or extended	1.1 km/h	0.68 mph
Gradeability - stowed**	45%	45%
Controls	12 V DC proportional	
Track system - 4 point	Loeering QTS-R42	

POWER	
Power source	Deutz D2011L03i 3 cylinder diesel 46 hp (34.3 kW)
Auxiliary power unit	12V DC 12V DC
Hydraulic tank capacity	170 L 45 gal
Fuel tank capacity	132 L 35 gal

WEIGHT***		
	12,248 kg	27,002 lbs
Ground Pressure	66.9 kpa	9.7 psi

STANDARDS COMPLIANCE ANSI A92.5, CSA B354.4, AS 1418.10

* The metric equivalent of working height adds 2 m to platform height. U.S. adds 6 ft to platform height.
 ** Gradeability applies to driving on slopes, see operator's manual for details regarding slope ratings.
 *** Weight will vary depending on options and/or country standards..

Features

STANDARD FEATURES

MEASUREMENTS

- 21.86 m (71 ft 2 in) working height
- 17.10 m (56 ft 2 in) horizontal reach
- Up to 227 kg (500 lbs) lift capacity

PRODUCTIVITY

- 2.44 m (8 ft) steel platform
- 1.52 m (5 ft) jib boom with 135° working range
- 4WD
- Full-time active oscillating axle
- Track system QTS-R42
- Self-leveling platform
- Hydraulic platform rotation
- Fully proportional Hall effect joystick controls
- Drive enable
- Tilt alarm
- Descent alarm
- Motion alarm
- Hour meter
- Horn
- 360° continuous turntable rotation
- Positive traction drive
- Two speed wheel motors
- Thumb rocker steer
- Engine gauge package
- Dual flashing beacons

POWER

- 12 V DC auxiliary power
- Deutz diesel 34.3 kW (46 hp)
- Anti-restart engine protection
- Auto engine fault shutdown
- Swing out engine tray
- Deutz intake air heater

OPTIONS & ACCESSORIES

PRODUCTIVITY

- Platform swing gate
- Half-mesh platform inserts with swing gate
- Platform top auxiliary rail
- Air line to platform
- Hydraulic oil cooler
- Fire resistant hydraulic oil
- Biodegradable hydraulic oil
- Basic hostile environment kit
- Deluxe hostile environment kit
- Tool tray
- Platform work lights
- Front driving lights
- Lockable platform control box covers
- Second battery
- 1.83 m (6 ft) steel platform

POWER OPTIONS

- 7 kVA hydraulic generator (240 V/50 Hz)
- Cold Weather Packages
- Diesel scrubber/spark arrestor muffler
- Air precleaner
- Retained key selector switch
- 240 V power to platform



Genie Australia – Toll free number 1800 788 633

Brisbane (Head Office)
33 Kimberley Street
Darra QLD 4076

Sydney
74 Glendenning Road
Glendenning NSW 2761

Melbourne
374 Hammond Road
Dandenong VIC 3175

Perth
126 Sheffield Road
Welshpool WA 6106

Genie United States Distributed by:

18340 NE 76th Street
P.O. Box 97030
Redmond, Washington
98073-9730

Effective Date: April 2012. Product specifications and prices are subject to change without notice or obligation. The photographs and/or drawings in this document are for illustrative purposes only. Refer to the appropriate Operators' Manual for instructions on the proper use of this equipment. Failure to follow the Operators Manual when using our equipment or to otherwise act irresponsibly may result in serious injury or death. The only warranty applicable to our equipment is the standard written warranty applicable to the particular product and sale and we make no other warranty, express or implied. Products and services listed may be trademarks, service marks, or trade names of Terex Corporation, Terex South Dakota, Inc., and/or their subsidiaries in the USA and other countries. All rights reserved. Terex is a registered trademark of Terex Corporation in the USA and many other countries. Genie is a registered trademark of Terex South Dakota, Inc. in the USA and many other countries. ©2009 Terex Corporation.