

Specifications

Model	ZX-135/70	
Measurements	US	Metric
Working height maximum*	141 ft	43.15 m
Platform height maximum	135 ft	41.15 m
Horizontal reach max - riser extended	59 ft 2 in	18.03 m
Horizontal reach max - riser retracted	69 ft 9 in	21.26 m
Up and over clearance maximum -		
riser extended	75 ft 6 in	23.01 m
riser retracted	32 ft 6 in	9.91 m
Below ground reach	19 ft 3 in	5.87 m
A Platform length - 8 ft / 6 ft model	3 ft / 2 ft 6 in	0.91 m / 0.76 m
B Platform width - 8 ft / 6 ft model	8 ft / 6 ft	2.44 m / 1.83 m
C Height - stowed	10 ft 1.5 in	3.09 m
D Length - stowed	42 ft 5 in	12.93 m
E Width - axles extended	16 ft 6 in	5.03 m
Width - axles retracted	8 ft 2 in	2.49 m
F Wheelbase - axles extended	15 ft 6 in	4.72 m
Wheelbase - axles retracted	16 ft 6 in	5.03 m
G Ground clearance - center	1 ft 3 in	0.38 m

Productivity

Lift capacity	600 lbs	272 kg
Platform rotation	160°	
Vertical jib rotation	110°	
Turntable rotation	360° continuous	
Turntable tailswing - axles extended riser up	1 ft 1 in	0.33 m
Turntable tailswing - riser down	13 ft 2 in	4.03 m
Drive speed - stowed	3.0 mph	4.8 km/h
Drive speed - raised	0.68 mph	1.1 km/h
Lift speed to full height	96 sec	
Gradeability - stowed**	45%	
Inside turning radius - axles extended	9 ft 11 in	3.02 m
Inside turning radius - axles retracted	20 ft 7 in	6.27 m
Outside turning radius - axles extended	24 ft 1 in	7.34 m
Outside turning radius - axles retracted	28 ft 1 in	8.56 m
Controls	12 V DC proportional	
Tires	445/65 D22.5 18 ply foam-filled	

Power

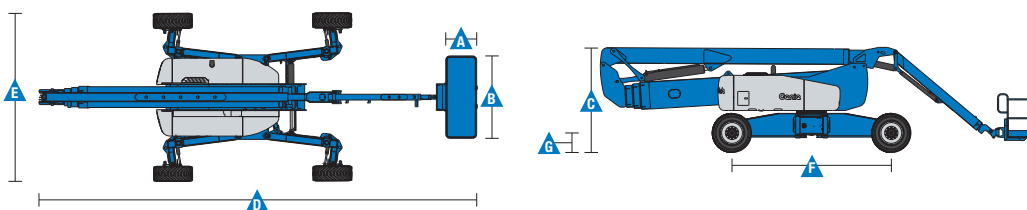
Power source	Deutz Diesel TD 2011 L04i 4-cylinder turbo diesel, 74 hp (55 kW) Perkins Diesel 1104D-44T 4-cylinder turbo diesel, 74 hp (55 kW)
Auxiliary power unit	12 V DC
Hydraulic tank capacity	65 gal 246.1 L
Fuel tank capacity	40 gal 151.4 L

Weight***

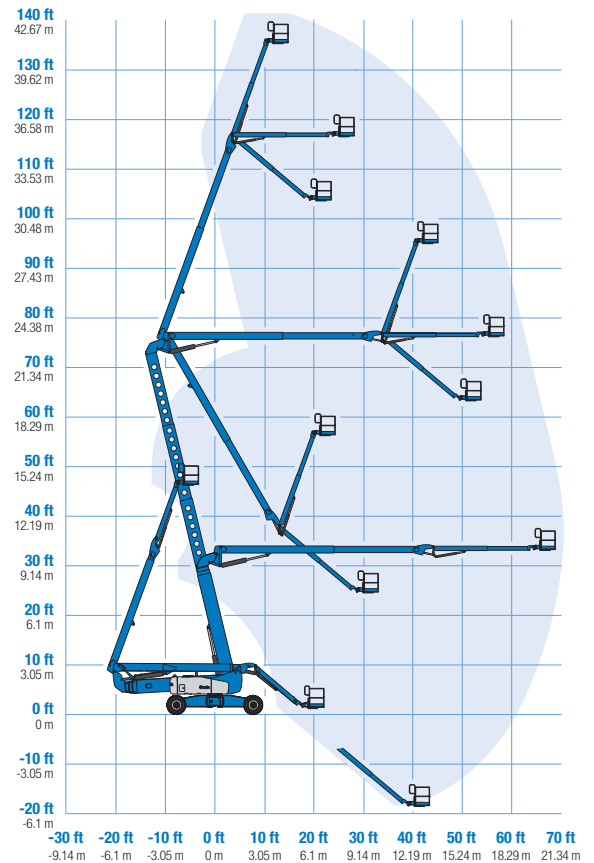
45,200 lbs 20,502 kg

Standards Compliance

ANSI A92.5, CSA B354.4, EN 280, AS 1418.10



Range Of Motion ZX-135/70



* The metric equivalent of working height adds 2 m to platform height. U.S. adds 6 ft to platform height.

** Gradeability applies to driving on slopes. See operator's manual for details regarding slope ratings.

*** Weight will vary depending on options and/or country standards.

Features

Standard Features

Measurements

- 141 ft (43.15 m) working height
- 69 ft 9 in (21.26 m) horizontal reach
- 75 ft 6 in (23.01 m) up and over clearance
- Up to 600 lbs (272 kg) lift capacity

Productivity

- Xchassis™ extendable axles
- 12 to 20 ft (3.66 to 6.1 m) Jib-Extend
- 160 ft Hydraulic platform rotation
- Proportional joystick controls
- Hydraulic oil cooler
- Drive enable
- AC power cord to the platform
- Horn
- Hour meter
- Tilt alarm
- Descent alarm
- 360° continuous turntable rotation
- Positive traction 4WD
- Two speed wheel motors
- Four wheel high angle steer
- Four steering modes: front, rear, crab and coordinated
- Four wheel brakes
- Configurable controls to limit lift height to 91 ft (27.74 m)

Power

- 12 V DC auxiliary power
- Engine protection package
- Deutz intake air heater
- Swing out engine tray

Easily Configured To Meet Your Needs

Platform Options

- Steel 8 ft (2.44 m) (standard)
- Steel 6 ft (1.83 m)
- Steel 8 ft (2.44 m) tri-entry

Jib

- 12 to 20 ft (3.66 to 6.10 m) Jib-Extend™

Engine Options

- 74 hp (55 kW) Deutz diesel Tier 4i (standard)
- 74 hp (55 kW) Perkins diesel Tier 4i

Drive/Steer

- 4WD (standard)
- 4WS (standard)

Tire

- Extra-wide rough terrain foam-filled (standard)



Options & Accessories

Productivity Options

- Platform swing gate
- Half-mesh platform inserts with swing gate
- Platform top auxiliary rail
- Welder package
- Welder Ready package
- Weld leads to the platform
- Air line to the platform
- Biodegradable hydraulic oil
- Aircraft protection package (6 ft platform only)
- Hostile environment kit
- Deluxe hostile environment kit
- Thumb rocker steer
- Tool tray
- Light package
- Entry toe boards
- Pipe cradle (pair)
- Alarm package
- Panel cradle package
- Lockable platform control box cover
- Operator protective structure

Power Options

- AC generator packages (110V/60Hz, 3000W or 220V/50Hz, 2500W)
- Cold weather kit
- Diesel scrubber/catalytic muffler (Deutz and Perkins)

* Available on select models

Genie United States

18340 NE 76th Street
P.O. Box 97030
Redmond, Washington 98073-9730
Telephone +1 (425) 881-1800
Toll Free in USA/Canada +1 (800)-536-1800
Fax +1 (425) 883-3475

Distributed By:

Effective Date: January, 2014. Product specifications and prices are subject to change without notice or obligation. The photographs and/or drawings in this document are for illustrative purposes only. Refer to the appropriate Operator's Manual for instructions on the proper use of this equipment. Failure to follow the appropriate Operator's Manual when using our equipment or to otherwise act irresponsibly may result in serious injury or death. The only warranty applicable to our equipment is the standard written warranty applicable to the particular product and sale and we make no other warranty, express or implied. Products and services listed may be trademarks, service marks or trade names of Terex Corporation and/or their subsidiaries in the USA and many other countries. Genie is a registered trademark of Terex South Dakota, Inc. © 2014 Terex Corporation.