



# G6-42P

MATERIAL HANDLERS



- Rough Terrain
- 90° Rear-Pivot Steering
- 6,600 lb (3,000 kg) Capacity
- 42 ft (12.8 m) Lift Height



## PERFORMANCE SPECIFICATIONS

<b>RATED CAPACITY</b> at 24" (610 mm) Load Center.....	6,600 lb (3,000 kg)
<b>MAXIMUM LIFT HEIGHT</b> .....	42 ft (12.8 m)
<b>MAXIMUM REACH</b> .....	29 ft (8.8 m)
<b>MAXIMUM CAPACITY</b> at Maximum Lift Height .....	6,000 lb (2,722 kg)
<b>MAXIMUM CAPACITY</b> at Maximum Reach .....	1,300 lb (590 kg)
<b>HEIGHT</b> .....	94 in (2.4 m)
<b>WIDTH</b> .....	96 in (2.4 m)
<b>WHEELBASE</b> .....	130 in (3.3 m)
<b>OUTSIDE TURNING RADIUS</b> .....	171 in (4.3 m)
<b>TRANSMISSION</b> .....	Hydrostatic
<b>FRAME LEVELING</b> .....	8 degrees
<b>LIFT SPEED</b> (Boom Retracted) Empty.....	97 f.p.m. (29.5 m/min)
Loaded.....	94 f.p.m. (28.6 m/min)
<b>TRAVEL SPEEDS</b> Forward & Reverse 4WD-2WD .....	6-16 mph (9.7-25.7km/hr)
<b>DRAWBAR PULL</b> (Loaded).....	16,300 lb (7,390 kg)
<b>OPERATING WEIGHT</b> .....	20,460 lb (9,280 kg)

Gradall's new Quick-Switch attachment design makes it faster and more efficient to optimize the versatility of the model G6-42P. Designed to allow a single operator

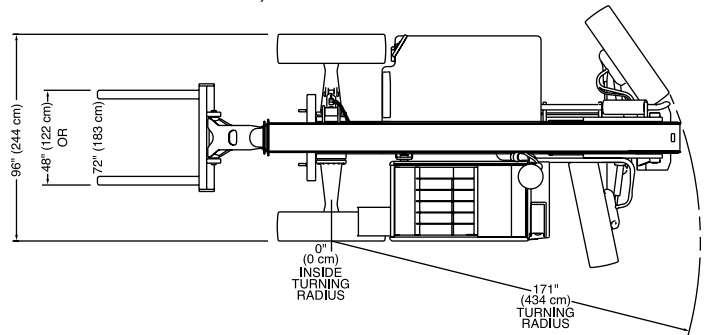
## Quick-Switch Attachment

to make changes in just seconds, the new Quick-Switch attachment is designed to accommodate larger capacity G-Series attachments that increase jobsite performance.



### IMPORTANT

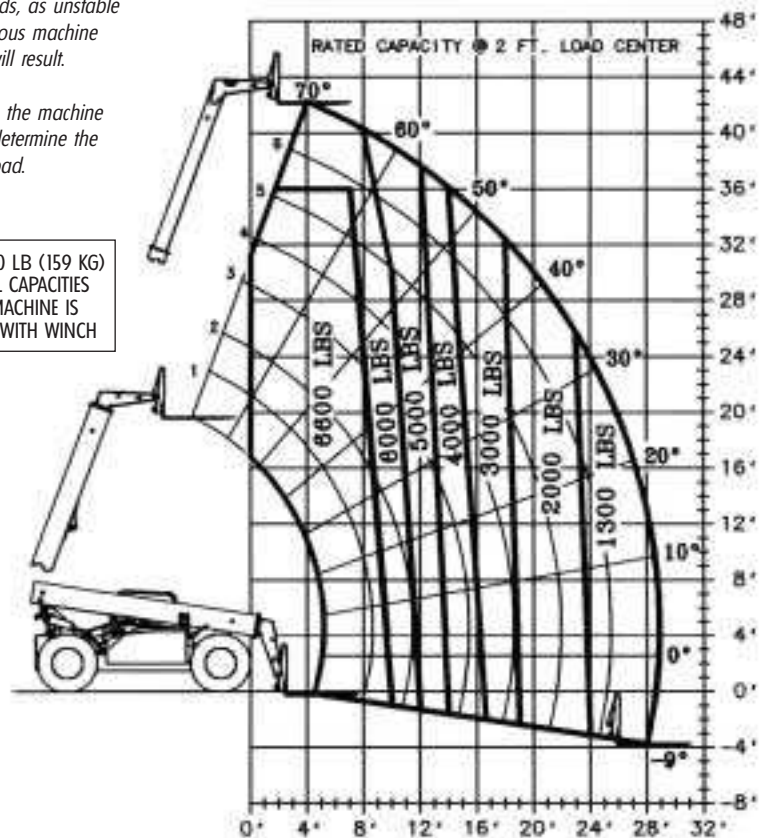
*Rated lift capacities shown are with machine equipped with carriage and pallet forks. The machine must be level on a firm surface with undamaged, properly inflated tires. Machine specifications and stability are based on rated lift capacities at specific boom angles and boom lengths. [If specifications are critical, the proposed application should be discussed with your dealer.]*



**DO NOT** exceed rated lift capacity loads, as unstable and dangerous machine conditions will result.

**DO NOT** tip the machine forward to determine the allowable load.

DEDUCT 350 LB (159 KG) FROM ALL CAPACITIES WHEN MACHINE IS EQUIPPED WITH WINCH



# G6-42P

## MATERIAL HANDLERS

### The construction industry's choice to effectively handle 6,600 lb. loads

The Gradall® Model G6-42P introduces a better way to handle 6,600-pound loads reliably, quickly and efficiently. Introducing a new era of jobsite versatility machines, the model G6-42P has a host of features designed to increase productivity and reduce operator fatigue, while at the same time delivering traditional advantages that have made Gradall® the preferred brand in the construction equipment industry.

#### The Model G6-42P advantages are:

- A new operator cab that's 22 percent larger. Operators get a clearer view as well as certified FOPS/ROPS operating protection and an attractive, wrap-around dashboard with easy-to-read gauges.
- A new 80-horsepower John Deere engine enclosed in a sleek, low-profile mid-machine compartment. You get superior weight distribution and ease of access for routine engine service.
- A boom location where you want it - out of the way while you are transporting material, unlike those low-boom models.
- Legendary Gradall boom strength, allowing contractors to confidently move bricks, lumber and other materials. Using a joystick control, the boom can raise cargo to 42-foot lift heights or reach out 29 feet. For extra lift height, choose the 6-foot vertical mast from our range of attachments.
- Greater versatility, thanks to a new Quick-Switch attachment design that makes it efficient to change between a specially selected group of G6-42P attachments that have improved strength and capacity.
- Excellent maneuverability with 90° rear-pivot steering for negotiating narrow aisles or crowded jobsites. The model G6-42P pivots into position on one front wheel to make precise load placements, keeping the load and forks inside the tight turning radius.
- Precision handling with Gradall's no-shift hydrostatic drivetrain. Operators can inch machines into exact positions for critical load placements.
- All-terrain mobility with four-wheel drive, a long 130-inch wheelbase, efficient weight distribution and a low center of gravity. Just 94 inches in height, the machine also can maneuver through 8-foot doorways.



The new wrap-around dash makes it convenient to monitor critical machine functions.

Ready to step up to a new, high level of reliable jobsite versatility and productivity?

See your Gradall sales and service locations today and discover greater Gradall value with the model G6-42P.



**Rough Terrain**  
**90° Rear-Pivot Steering**  
**6,600 lb (3,000 kg)**  
**Capacity**  
**42 ft (12.8 m) Lift Height**

A new low-profile engine compartment provides ease of access for ground-level servicing.



## OPTIONAL ACCESSORIES

John Deere CD4045 100 HP TURBOCHARGED ENGINE

### CAB ENCLOSURE

Lockable, Dutch style door; heater;  
defroster fan; washer and windshield wiper.

### HEATER & DEFROSTER FAN

### LIGHT PACKAGE

### ROTATING BEACON

### AUXILIARY HYDRAULIC CIRCUIT

Required for all attachments equipped with  
cylinders or other hydraulic components.  
Consists of valves, controls, hydraulic lines.

### COLD START PACKAGE

### RADIAL TIRES

### TILT ON JOYSTICK (adjustable)

## ATTACHMENTS

CARRIAGE .....48" (1.2 m)

CARRIAGE .....72" (1.8 m)

\*SLOPE PILE CARRIAGE ...48" (1.2 m) & 72" (1.8 m)

\*DRYWALL CARRIAGE

\*100° SWING CARRIAGE

### PALLET FORKS

2" x 4" x 48" (50.8 mm x 101.6 mm x 1.2m)

### CUBING FORKS

2" x 2" x 48" (50.8 mm x 50.8 mm x 1.2m)

\*BOOM HEAD MOUNTED WINCH

\*VERTICAL MAST .....6' (1.8 m) QUICK-SWITCH

\*SWING MAST .....6' (1.8 m)

TRUSS BOOM .....10' (3.0 m) and 15' (4.6 m)

BUCKET .....0.75 CY (57 m<sup>3</sup>)

BUCKET .....1.25 CY (0.95 m<sup>3</sup>)

BUCKET .....102" wide-1.25 CY (0.95 m<sup>3</sup>)

\*TRUSS BOOM

WITH WINCH .....10' (3.0 m) and 15' (4.6 m)

\*Requires auxiliary hydraulics



JLG Industries, Inc.

1 JLG Drive, McConnellsburg, PA 17233-9533

Telephone 717-485-5161 Toll-free in US 877-JLG-LIFT

Fax 717-485-6417

www.jlg.com

# G6-42P

## MATERIAL HANDLERS

### DRIVE LINE SPECIFICATIONS:

#### ENGINE

Make and Model	John Deere CD4045	Displacement	276 cu. in. (4.5 L)
Fuel	No. 2 Diesel	Rated Speed	2500 rpm
Cycles	4	Max. Gross BHP	80 HP (60 Kw)
No. of Cylinders	4	Fuel Tank	38 gal (141 L)

#### ENGINE FILTERS

Two-stage dry air cleaner - centrifugal pre-cleaner with continuous dust ejector plus cleanable and replaceable dry filter element. Visual service indicator. Replaceable element-type fuel filter/water separator. Full-flow replaceable-element engine oil filter.

#### ELECTRICAL SYSTEM

Voltage - 12V      Alternator - 63 amp      Battery - 810 Cold Cranking AMP at 0°F

#### TRANSMISSION

Self-contained, swashplate design, variable displacement, over center, piston pump.  
Neutral start switch. (Park brake must also be engaged to start.)  
2WD and 4WD inching.  
2WD - 4WD switch on dash.  
Forward, neutral, reverse lever on left of steering column.  
Single foot pedal control provides both braking and inching.  
Electro/hydraulic traction lock valve for superior tractive effort.

#### AXLES

Planetary hubs with piston motors on rear axle.  
Piston motor-driven planetary front axle with high-bias limited slip differential.

#### BRAKES

Service - Hydraulic wet disc brake on each front wheel. Hydraulic dynamic braking on front axle and both rear wheels.

#### PARKING BRAKES

Wet disc spring-applied electro/hydraulic release. Light on dash indicates when brake is on.

#### TIRES

13:00x24 - 12PR, G2 type (standard). Optional: 13:00R24 radial tires, 14:00x24 12PR G2, 14:00R24 radial tires.

#### STEERING

Hydraulic power steering with manual backup.  
Rear-wheel steering, 90° pivot around either front tire. Outside turning radius less than chassis length.

#### INSTRUMENTS

Volt meter, hour meter, engine oil pressure gauge, fuel gauge, water temperature gauge.  
All gauges protected by clear acrylic covers.

#### CONTROLS

Grouped for operator comfort and convenience.  
Boom lift and crowd on single joystick.  
Left-hand tilt and sway lever.  
Foot throttle.  
Floor mounted traction lock switch.  
Optional: Single-lever tilt/sway control mounted on right-hand side of operator.

#### HYDROSTATIC DRIVE

6300 PSI (43,437 kpa) closed loop with piston pump and motors. 8 micron suction filter for charge pump.  
All pressure connections ORS and Code 62 O-ring flanges.  
Integral reservoir with implement hydraulics.

#### HYDRAULIC SYSTEM-IMPLEMENT

Dual-section gear pump.  
40 gal (151.4 L) system capacity.  
8 micron filters with visual service indicator and suction strainer.  
Lift, crowd, tilt and sway cylinders have safety checks to prevent dropping of load in the event of hose failure.

*This machine is designed to meet specifications of ASME B56.6b-1998. It is Gradall Policy to continually improve its products. Therefore, designs, materials and specifications are subject to change without notice and without incurring any liability on units already sold. Units pictured are equipped with optional equipment. See applicable specifications and price lists for optional equipment.*