



GROVE

GMK7550

GMK7450

550 US (450 Metric) Ton Capacity

BOOM MEGAFORM™

GMK7550

TWINLOCK™

- 52.5-197 ft (16m-60m) 5-Section electronically controlled and hydraulically positioned, mechanically pinned
- Quick-reeve boom nose
- 207 ft (63m) Max tip height
- 184 ft (56m) Max working radius



**Quick removal
system standard**

BOOM BENEFITS

GMK7550

TWINLOCK™

Boom Telescoping System

Pre-selection of boom extension mode

Provides 32 different main boom configurations for optimum strength & stability set-ups

Eliminates multiple air/electrical cable drums mounted on boom

Lower center of gravity...cylinder stays in base section

FIXED JIB

GMK7550

- Total length: 230 ft (70m)
- Offsets: 3° and 25°

Allowable lengths:

39 ft (12m), 59 ft (18m), 79 ft (24m), 98 ft (30m)
118 ft (36m), 138 ft (42m), 151 ft (46m), 170 ft (52m),
190 ft (58m), 210 ft (64m), 230 ft (70m)

25° lengths:

Total length: 151 ft. (46m) offset length: 16 ft (5m)
Total length: 170 ft. (52m) offset length: 36 ft (11m)
Total length: 190 ft. (56m) offset length: 56 ft (17m)
Total length: 210 ft. (64m) offset length: 75 ft (23m)
Total length: 230 ft. (70m) offset length: 95 ft (29m)

Maximum tip height: appr. 394 ft (120m)

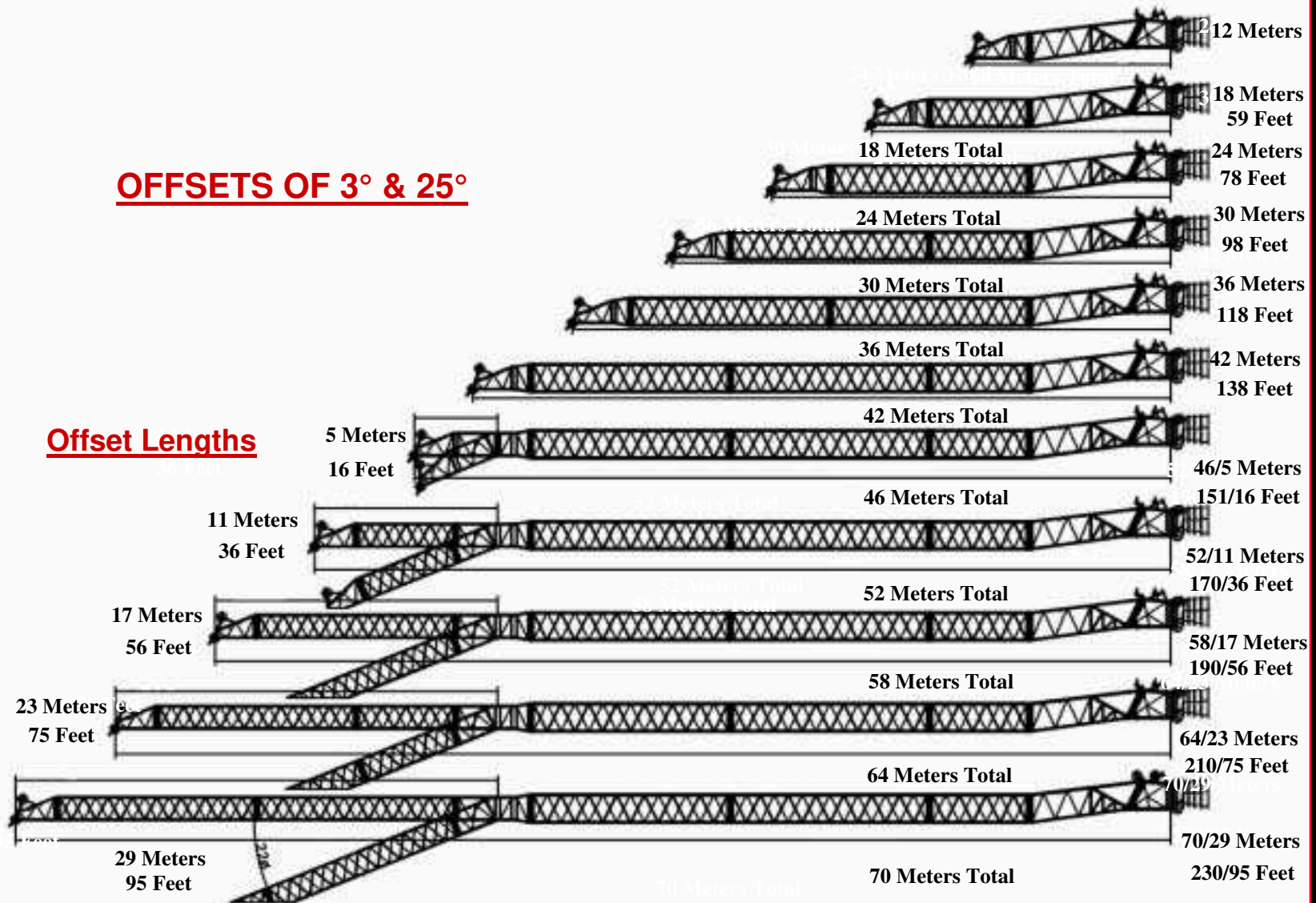
Maximum working radius: appr. 263 ft (80m)

Maximum main boom length: 179 ft (54.6m)

FIXED JIB COMBINATIONS

GMK7550

OFFSETS OF 3° & 25°



LUFFING JIB

GMK7550

240 ft (73m) total length

Main boom angles: 60°, 70°, or 81°

Allowable lengths:

82 ft (25m), 102 ft (31m), 121 ft (37m)

141 ft (43m), 161 ft (49m), 180 ft (55m), 200 ft (61m),

220 ft (67m), 240 ft (73m)

Offset lengths:

Total length: 161 ft. (49m) offset length: 16 ft (5m)

Total length: 180 ft. (55m) offset length: 16 ft (5m)

Total length: 200 ft. (61m) offset length: 36 ft (11m)

Total length: 220 ft. (67m) offset length: 56 ft (17m)

Total length: 240 ft. (73m) offset length: 75 ft (23m)

Maximum tip height: appr. 410 ft (125m)

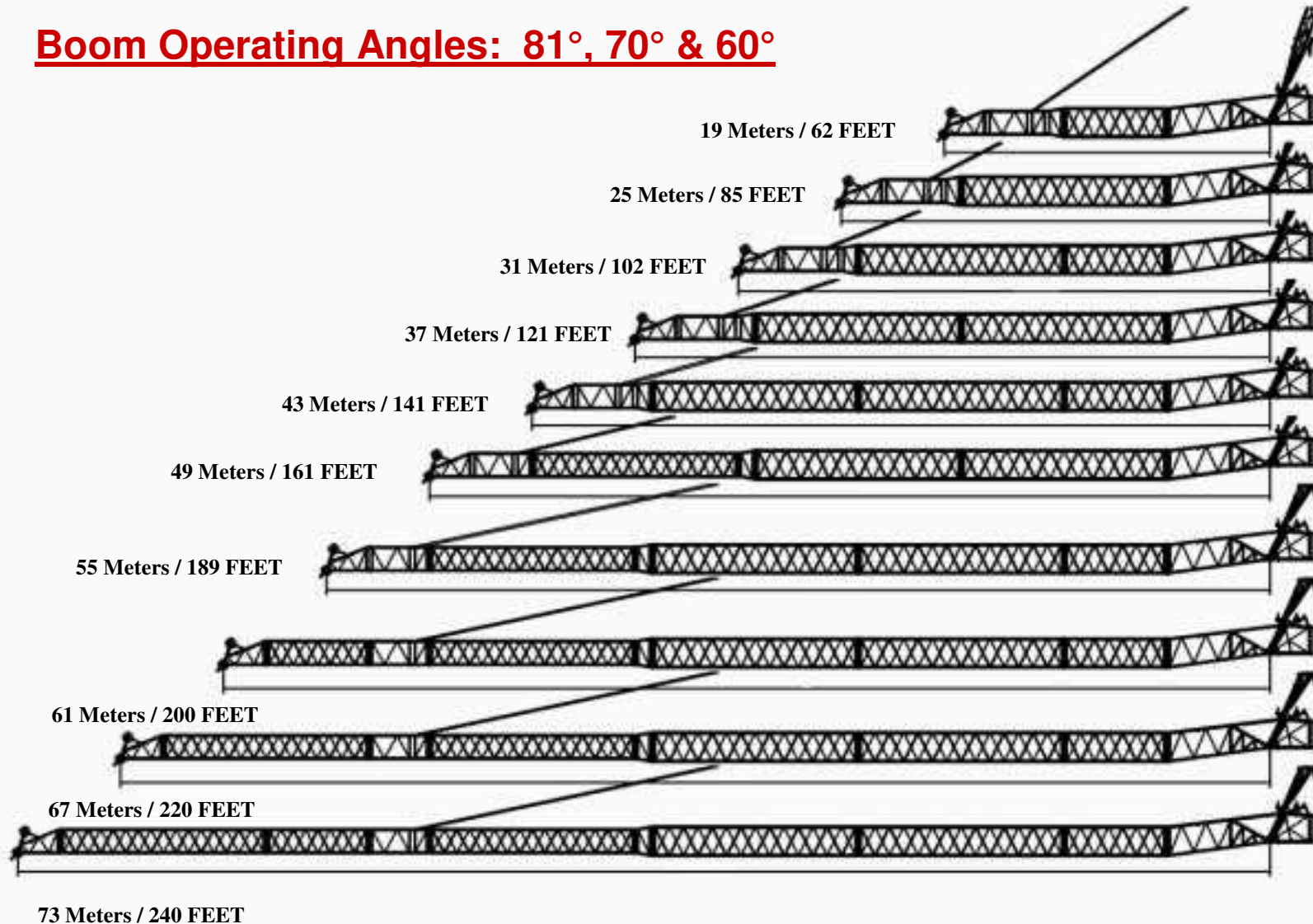
Maximum working radius: appr. 263 ft (80m)

Maximum main boom length: (TBD)

LUFFING JIB LENGTHS

GMK7550

Boom Operating Angles: 81°, 70° & 60°



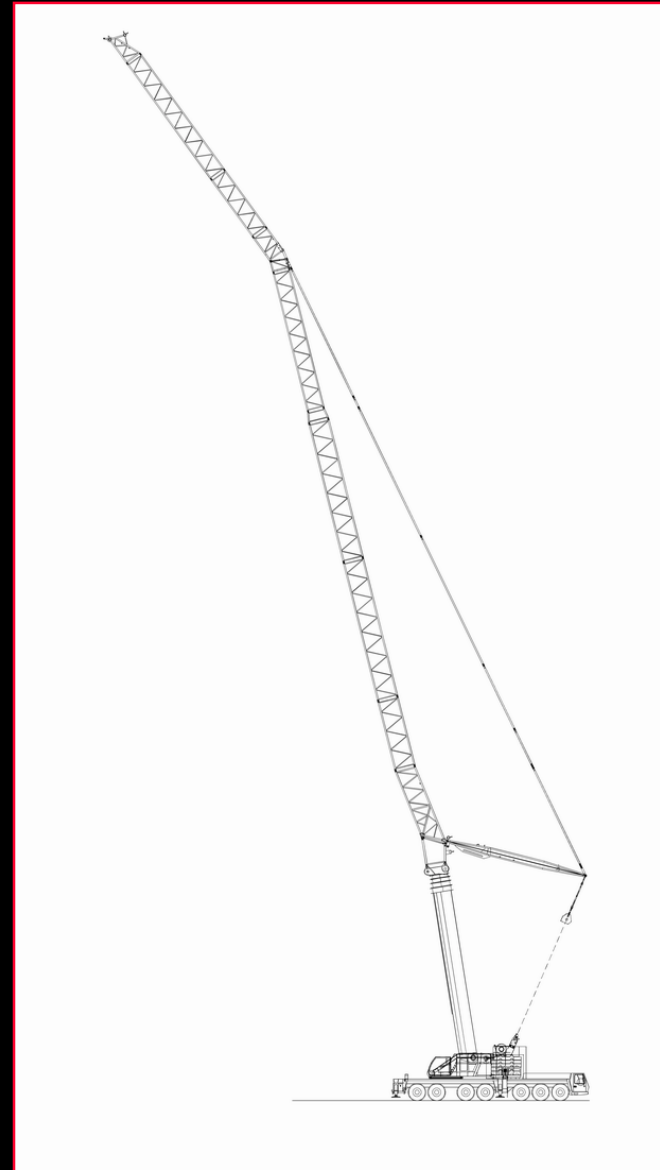
LUFFING JIB

Phase 2 Option

GMK7550

Luffing jib with offsets similar to the fixed jib. Offset lengths TBD.

This unique design will allow greater up and over capability.



HOISTS

GMK7550



- Zollern Hoists
- Permissible line pull:
24,700 lbs (11 204 kg)
- Rotation and third wrap
indicator standard
- 1,509 ft (460m) 24mm
Casar wire rope
- **TBD** on aux hoist

SUPERSTRUCTURE CAB **GMK7550**



- Mounted on **right** side of superstructure
- Hydraulically swings to the rear of superstructure for road travel
- Dual-axis joysticks
- Opening shatter-resistant skylight
- Opening windshield
- Sliding rear window
- Cab tiltable by approx. 20°
- Ergonomic interior
- A/C standard



ECOS

GMK7550

New ECOS System



- Mounted on swing arm
- Tiltable for operator comfort

New EKS5 LMI System

SUPERSTRUCTURE ENGINE

GMK7550

- Mercedes OM 906 LA
- 255 Horsepower (190kW)



HYDRAULIC SYSTEM

GMK7550

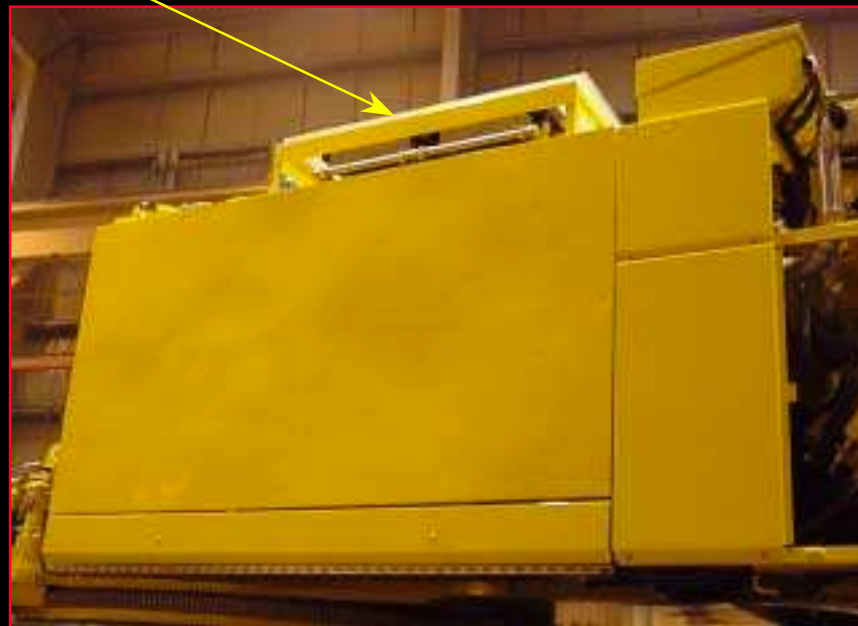
- **Four separate pump circuits:** four axial-piston variable-displacement pumps with electronic engine speed related control; three axial-piston variable displacement motors for swing



HYDRAULIC SYSTEM

GMK7550

Oil cooler(s) standard



Hydraulic reservoir capacity: 428 gallons (1 620l)

COUNTERWEIGHT

GMK7550

Fully removable

TOTAL: 265,000 LBS. OR 120 MT
Permitted counterweight versions:

265,000 lbs (120 MT)

220,460 lbs (100 MT)

176,370 lbs (80 MT)

132,275 lbs (60 MT)

88,185 lbs (40 MT)

44,090 lbs (20 MT)

Zero counterweight



20MT Base Plate



10MT Cheek weights

CARRIER DRIVE

GMK7550



**Mercedes
OM502LA
563 HP (420kW)**

- **7-speed Allison automatic transmission**
- **2-speed transfer case**
- **132 Gallon (500 l) fuel tank capacity**
- **55 MPH highway speed**



CARRIER DRIVE

GMK7550



- **Drive/Steer:** 14 x 6 x 14 (STD)
- **Drive axles:** 1,4 & 5
- **Drive/Steer:** 14 x 8 x 14 (OPT)
- **Drive axles:** 1, 2, 4 & 5

CARRIER FRAME

GMK7550

New top-steering Megastrut design on the rear frame section allows a deeper, lightweight frame section utilizing 140 KSI material



All transverse welds are ultrasonically tested and all remaining welds are magnetic particle inspected

CARRIER CAB

GMK7550

Full-width cab

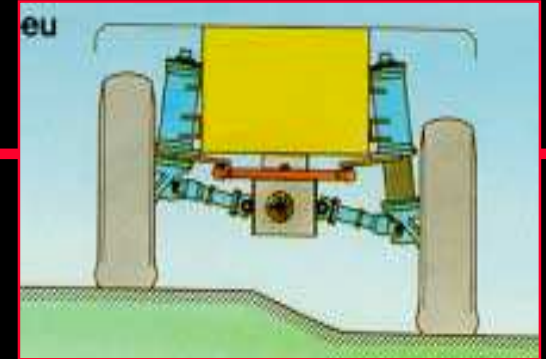
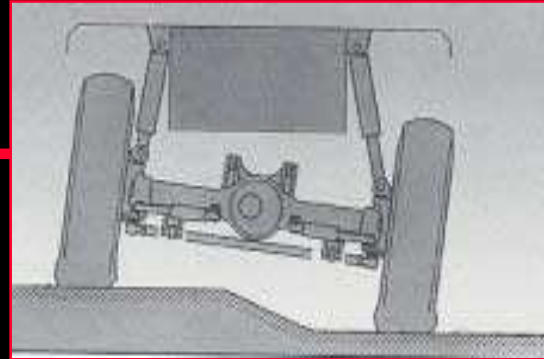


Air conditioning is standard equipment

Standardization of GMK driving and suspension controls

SUSPENSION

Features proven
MEGATRAK™
independent
suspension



OUTRIGGERS

GMK7550

- 50% and 100% extension standard
- Controls located on each side of carrier
- Self-stowing outrigger pads
- Digital level



TIRES

GMK7550

Standard 20.5R25 tires on steel wheels

14.00 and 16.00 sizes available as an option

Optional Aluminum Wheels

- satin finish
- available on all sizes of tires
- weight savings
- designed to fit onto existing GMK models



Weight Difference

20.5 tires on steel wheels Vs 20.5 tires on aluminum wheels: 348 lbs. per axle

20.5 tires on aluminum wheels Vs 16.00 tires on aluminum wheels: 185 lbs. per axle

REAR OUTRIGGER BOX TAG AXLE

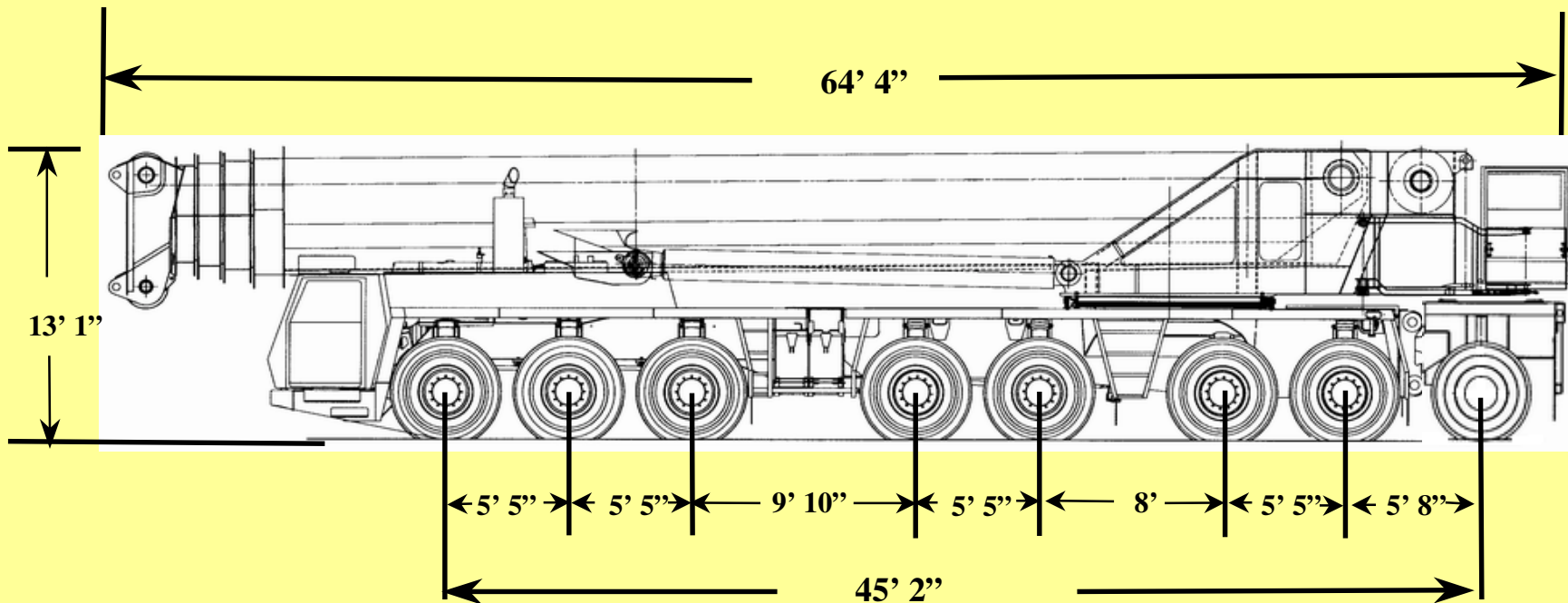
GMK7550

- Removable rear outrigger box
- Developed for North American roading laws



Tag axle option which can be pinned in place of the rear outrigger box for improved roading

Boom Over Front-Axles Down-Tag Axle



Front 3 Axles

29,580 lbs. per axle

Rear 5 Axles

20,470 lbs. per axle

Unit equipped as follows:

Rear outrigger box removed, tag axle in place

20.5 tires on aluminum rims--axles 1 through 8

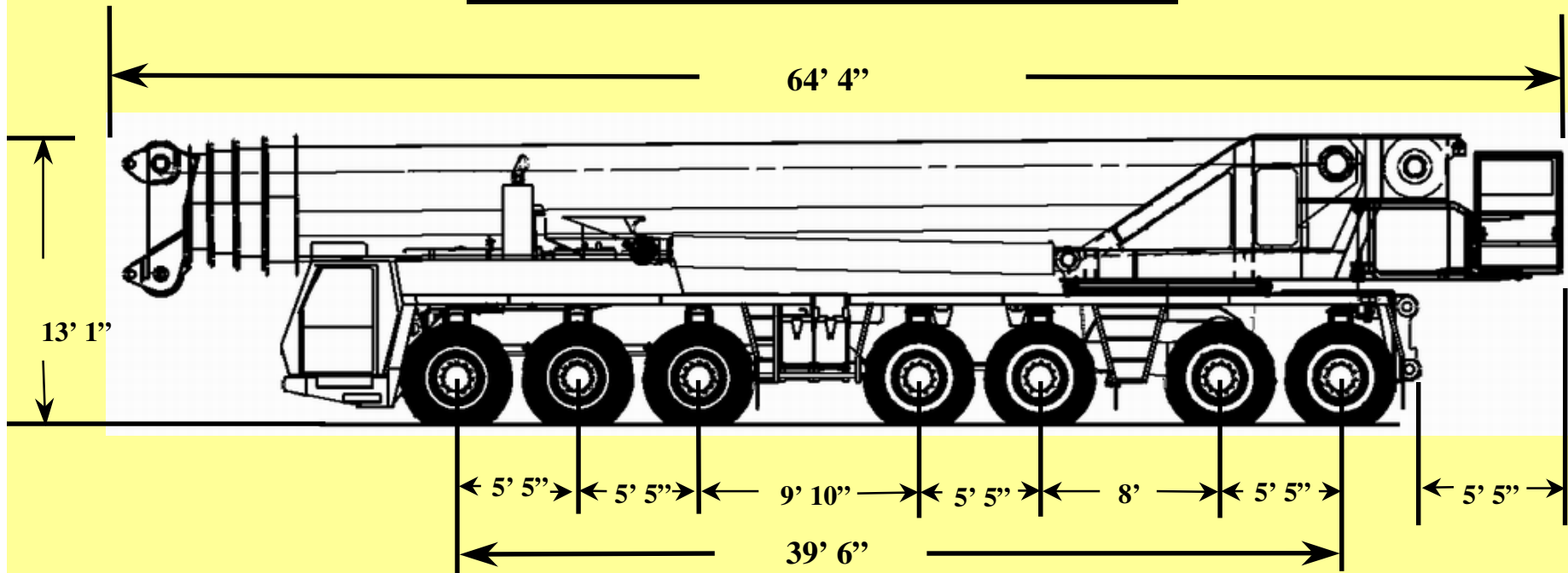
Operator, 165 lbs.

GVW

191,090 lbs.

GMK7550

Boom Over Front-Axles Down



Front 3 Axles

26,920 lbs. per axle

Rear 4 Axles

26,110 lbs. per axle

GVW

185,200 lbs.

Unit equipped as follows:

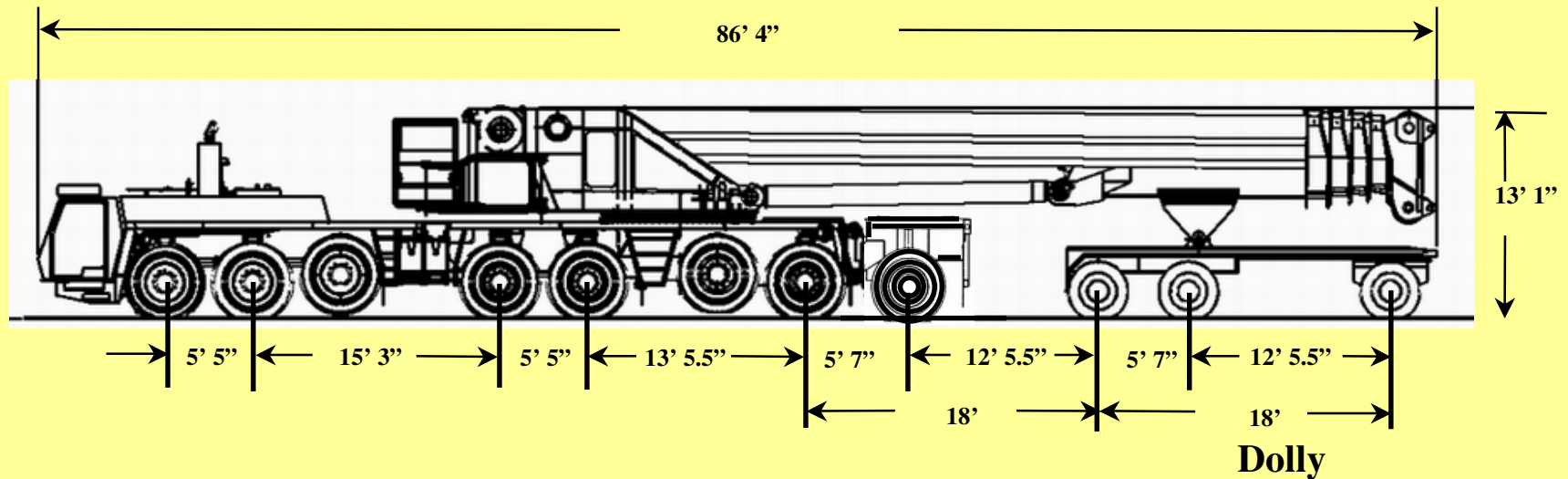
Rear outrigger box removed

20.5 tires on aluminum rims--axles 1 through 7

Operator, 165 lbs.

GMK7550

Trailing Boom Axles 3 & 6 Raised with Spread Dolly



Axles 1 & 2	Axles 4,5,7,& 8	Per axle front (2)	Rear axle
23,530 lbs. per axle	23,030 lbs. per axle	23,900 lbs. per axle	14,020 lbs.

Total GVW

201,000 lbs.

Unit equipped as follows:

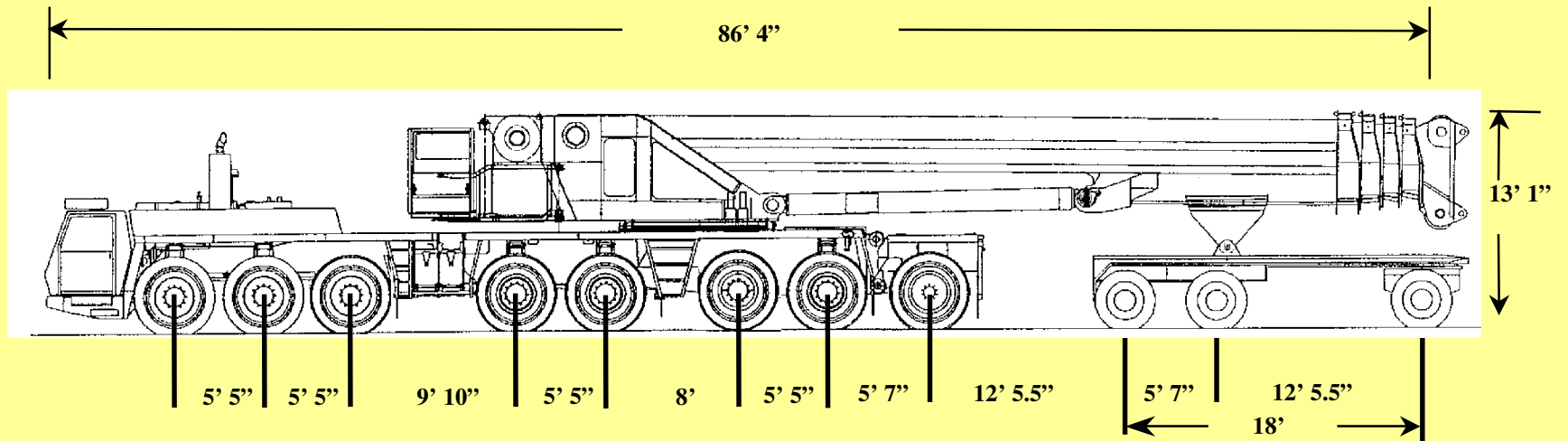
Rear outrigger box removed, tag axle in place

20.5 tires on aluminum rims--axles 1 through 8

Operator, 165 lbs.

GMK7550

Trailing Boom/Spread Dolly with Tag Axle



Axles 1 - 3	Axles 4 - 8	Front Dolly Tandem	Rear Dolly Axle
17,230 lbs. per axle	17,500 lbs. per axle	23,900 lbs. per axle	14,020 lbs.

Total GVW

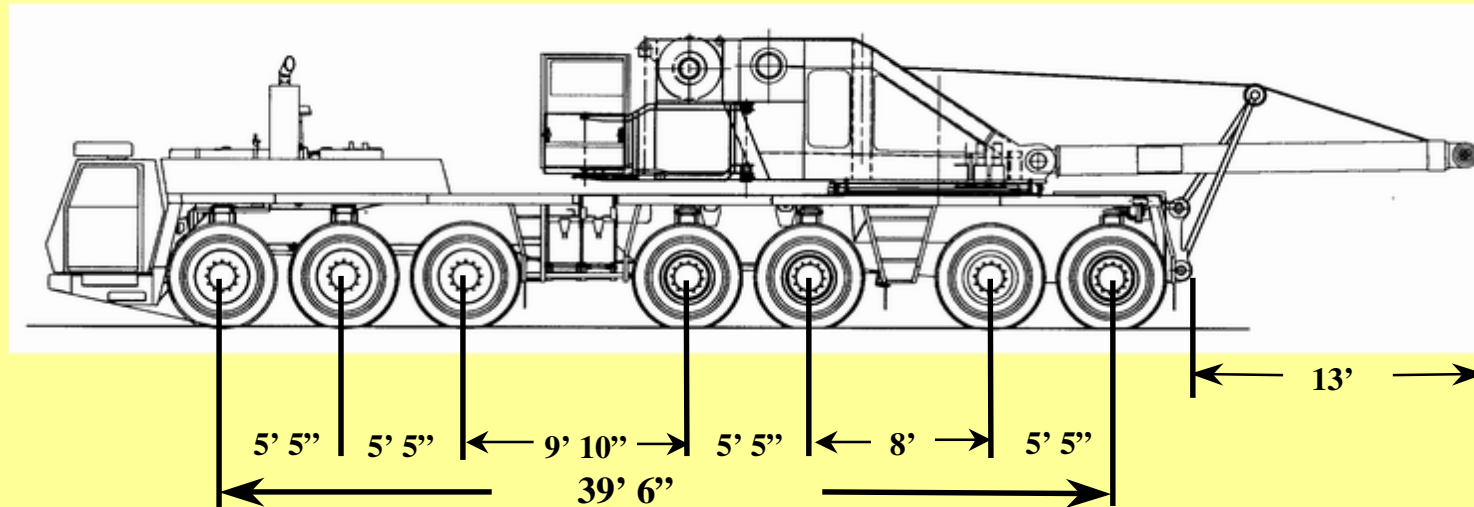
201,000 lbs.

Unit equipped as follows:

- Rear outrigger box removed, tag axle in place
- 20.5 tires on aluminum rims--axles 1 through 8
- Operator, 165 lbs.

GMK7550

Superstructure Over Rear--Boom Removed



Front 3 Axles

11,700 lbs. per axle

Rear 4 Axles

19,280 lbs. per axle

Unit equipped as follows:

Rear outrigger box removed

20.5 tires on aluminum rims--axles 1 through 7

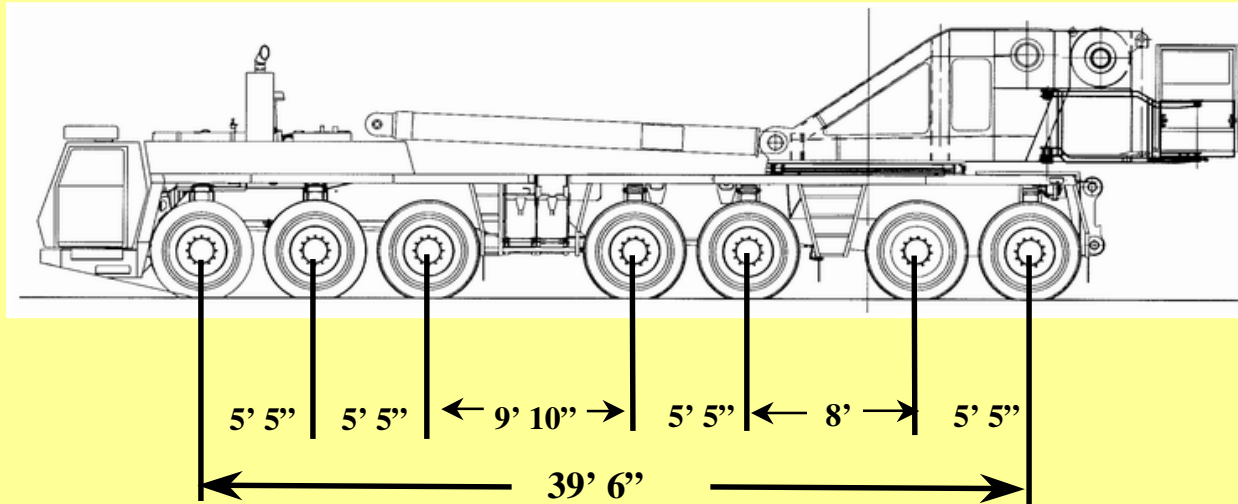
Operator, 165 lbs.

GVW

112,220 lbs.

GMK7550

Superstructure Over Front--Boom Removed



Front 3 Axles

10,200 lbs. per axle

Rear 4 Axles

20,400 lbs. per axle

GVW

Unit equipped as follows:

Rear outrigger box removed

112,220 lbs.

20.5 tires on aluminum rims--axles 1 through 7

Operator, 165 lbs.

GMK7550



GROVE®

Thank You!