

YB7700 Series

product guide

features

- 2 models ... YB7722 & YB7722XL
- 22 ton (19.9 mt) capacity 360° on outriggers @ 8.5 ft. (2.6m) radius
- 15 ton (13.6 mt) deck carrying capacity
- 15 ton (13.6 mt) on rubber capacity
- YB7722 – 43 ft. (13.1m) 3-section boom
- YB7722XL – 67 ft. (20.43m) 5-section boom
- 17 ft. (5.18m) offsettable swingaway extension
- 130 bhp (97.0 kW) Cummins QSB4.5L (Tier III) diesel engine



contents

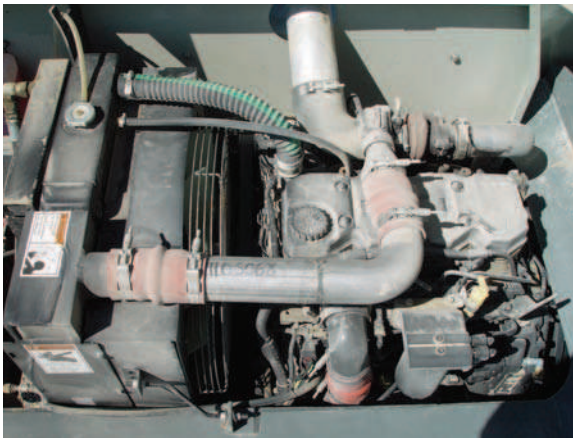
| | |
|--------------------|----|
| Features | 2 |
| Specifications | 3 |
| YB7722 / XL | |
| Dimensions | 5 |
| YB7722 | |
| Working Range | 6 |
| Load Chart | 7 |
| YB7722XL | |
| Range Diagram | 8 |
| Load Chart | 9 |
| YB7722/XL (metric) | |
| Range Diagram | 10 |
| DIN/ISO Load Chart | 11 |
| Range Diagram | 12 |
| DIN/ISO Load Chart | 13 |

features

2



- Two position beam – jack style outriggers
- All beams or jacks can be extended or retracted at the same time



Standard:

- Water-cooled Cummins QSB4.5L Turbo-charged diesel engine rated @ 130 BHP (97.0kW)
- Variable displacement piston pump w/piggyback gear pump.



Standard: Open air cab shell w/overhead safety glass

Optional: Closed cab with hinged door, heater, defroster, and glass

YB7700 Series



- 43 ft. (13.1m) 3-section main boom or 67 ft. (20.42m) 5-section main boom
- 4-position pivoting boom head for low head room clearance
- Quick reeve boom head and hookblock



Standard: 4-wheel drive and 4-wheel steer and crab steer with electronic self-alignment

Standard: 17.5 X 25 bias ply tires

specifications

3

Superstructure

Boom

YB7722: 19 ft. 6 in. – 43 ft. 0 in. (5.9m – 13.1m) three-section full power boom.

Maximum tip height: 51 ft. 8 in. (15.7m)

YB7722XL: 19 ft. 6 in. – 67 ft. 0 in. (5.9m – 20.4m) five-section full power boom.

Maximum tip height: 75 ft. 0 in. (22.8m)

Boom angle indicator mounted on both sides of base section.

*Boom Extension

17 ft. (5.18m) fixed boom extension, offsettable to 30° and 60° via pivoting boom nose.

Maximum tip height: 92 ft. 0 in. (28.0m)

Boom Nose

2 sheave, 4-position (0°, + 30°, + 60°, + 80°) pivoting boom nose for minimizing head space requirements. Lowers head height 23.9 in. (0.60m) when nose is pivoted fully forward.

Boom Elevation

Two double acting hydraulic cylinders with integral holding valve.

Elevation: 0° to 80°

Anti-Two Block Device

Standard anti-two block device, when activated, provides an audible warning to the crane operator and disengages all crane functions whose movement can cause two-blocking.

Load Indicator (wireless LSI)

A simple effective and easy to use load indicating system used in conjunction with the anti-two block system to assist the operator in efficient operation of the unit within the limits of the load chart. The display panel displays the hook load and warns the operator when a preset load capacity is exceeded. The warning is by a flashing light on the display panel. In conjunction with the load display panel (receiver), there is a wireless transmitter and load sensing pin attached to the boom head that transmits the hook load to the display panel.

*Rated Capacity Limiter (wireless RCL)

Similar to the Load Indicator, but stops the telescope out and boom lift down function when a load limit is exceeded. Uses a similar display panel with the addition of displaying boom angle and boom length read outs on the panel.

*Load Moment Indicator (hardwired LMI)

Digital display of boom angle, boom length, boom radius, capacity, and allows for operator input to set the limits based on load chart. Displays color coded light bar and audible alarm with function cutout if load exceeds entered parameters.

Swing

Ball bearing swing circle with 360° continuous rotation.

Planetary swing.

Maximum speed: 2.5 rpm

Hydraulic System

Variable displacement piston pump and piggyback gear pump.

Combined flow: 74.0 gpm (280.0 Lpm)

Maximum system operating pressure: 3600 p.s.i.

Six section valve bank, chassis mounted, operated via dash mounted, pilot pressure hydraulic joysticks.

Return line filter with full flow by-pass protection and service indicator.

60.0 gallon (227 L) hydraulic reservoir with sight level gauge and steel side plating to guard against side impact damage.

Hoist Specifications

Piston motor drive with spring applied / hyd. released brake. Two speed power up and down.

Maximum Single Line Pull: 13,800 lb. (6260kg)

Maximum Single Line Speed: 320 fpm (97.5m/min)

Maximum Permissible Single Line Pull: 11,000 lb (4990kg)
(5/8" [16.0mm] XIPS)

Rope Length (Std): 375 ft. (114.3m)

*Denotes optional equipment

YB7700 Series

GROVE

Courtesy of Crane.Market

specifications

4

Carrier

Frame

High strength alloy steel constructed with integral outrigger housings; front and rear tie-down lugs. 60 ft.² carrydeck size with 30,000 lb (13 608kg) deck only carrying capacity & 20,000 lb (9 072kg) combined with boom load. Deck coated with anti-skid treatment.

Outriggers

2- stage hydraulic telescoping beam with vertical jack at the four corners provides extended and down and retracted and down lifting capacities. Integral holding valves on both beam and jack.

Outrigger Controls

Three switch operation mounted on dash panel. One 3- position rocker switch to select all beams / jacks, left beams / jacks only, or right beams / jacks only. Separate 4- way toggle switch to activate beams out / in and jacks down / up. Level bubble indicator located inside operators compartment.

Outrigger pad size: 11.5 in. x 11.5 in. (29.2cmx29.2cm)

*Independent outrigger controls available as an option.

Std. Engine

Cummins QSB 4.5L turbo-charged diesel rated @ 130 bhp (97kW) @ 2500 rpm with engine block heater.

Operators Control Station

Frame mounted, open air style control station with cab shell includes all crane functions, driving controls, and overhead safety glass. Other standard equipment includes a durable weather resistant seat with seat belt, hourmeter, sight level bubble, and fire extinguisher. The dash panel includes engine oil pressure gauge, engine water temperature gauge, fuel gauge, transmission low oil and high temperature warning lights, low battery warning light, and brake system low pressure warning light. The LSI (load indicator) receiver is mounted to the top of the dash.

*Operators Control Station Enclosed

Includes the standard cab shell with the addition of front, right and rear glass. Hinged full door with sliding glass.

Front windshield wiper, heater and defroster are included.

Fuel Tank Capacity

50 gallon (189 L) all steel construction with steel side plate to guard against side impact. Fuel gauge located on dash panel in operators station.

Electrical System

One 12V maintenance free battery, 820CCA @ 0°. 63 amp alternator.

Drive

4 x 4 – Front and rear axle drive with planetary hubs and limited slip differential.

Steer

Standard: 3-steering modes:

Front 2-wheel, 4-wheel coordinated, and crab steer w/ electronic self alignment. Rotary switch select on dash panel.

Transmission

Clark powershift 4-speeds forward and reverse. Stalk mounted shifter on left side of steering column.

Tires

17.5 x 25 Bias (std.)

*17.5 R 25 radial

Brakes

Hydraulic actuated internal wet-disc service brakes acting on all four wheels. A dash mounted toggle switch activates the dry disc parking brake on the transmission output yoke with a dash warning light.

Suspension

Front: Rigid mounted to frame.

Rear: Provides 3.5° oscillation for use on semi-rough terrain.

Axle lock-out switch, on dash panel, to engage / disengage the axle lock-out. Axle lock-out must be engaged (locked) whenever picking on rubber and when traveling in the crab steer mode. A warning light indicates when the axle lock-outs are engaged.

Lights

Recessed mounted, includes head, tail, rear work, stop, and turn signals.

Maximum Speed

19.5 MPH (31.3km/h)

Gradeability**

63%....no load

38%....30,000lb (13 608kg) load

G.V.W.

YB7722: 41,270 lb. (18 720kg)

YB7722XL: 43,000 lb (19 504kg)

Miscellaneous Standard Equipment

Two sheaves, "Quick Reeve" style 22T (19.9mt) hookblock

Back-up alarm

Dual rearview mirrors

Outrigger motion alarm

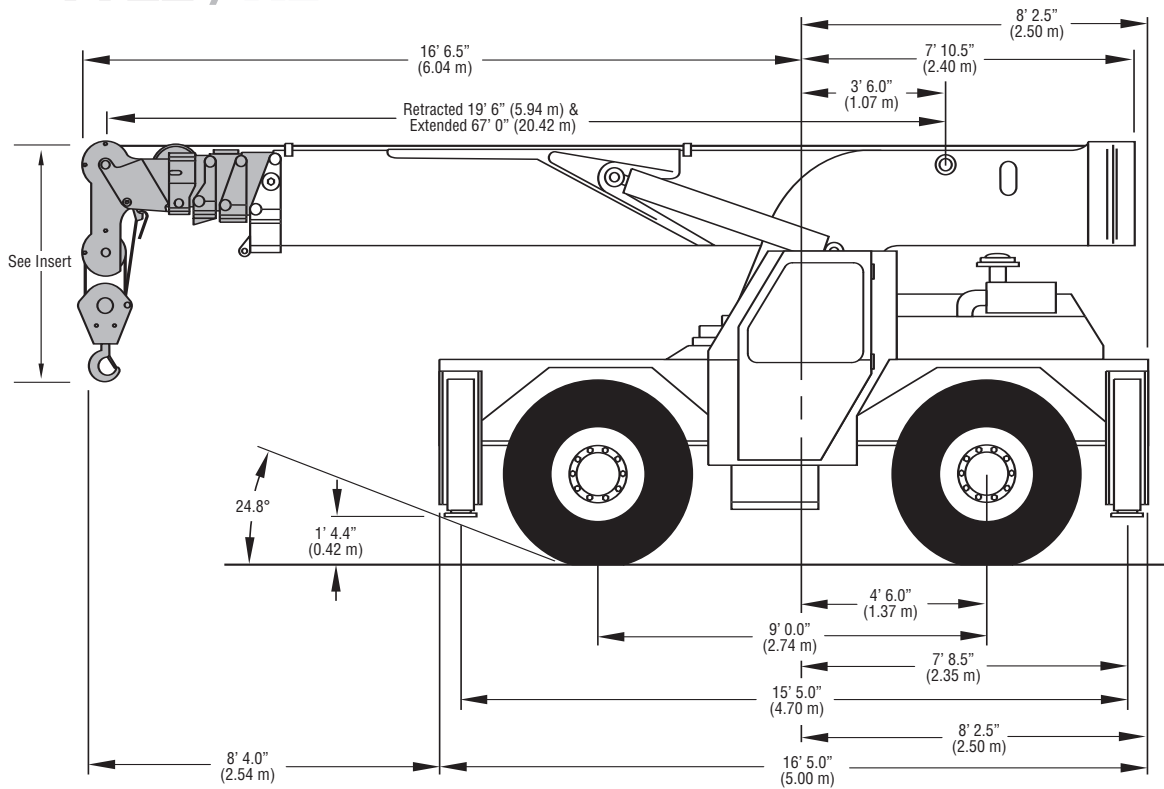
Lifting and tie down lugs

*Denotes optional equipment

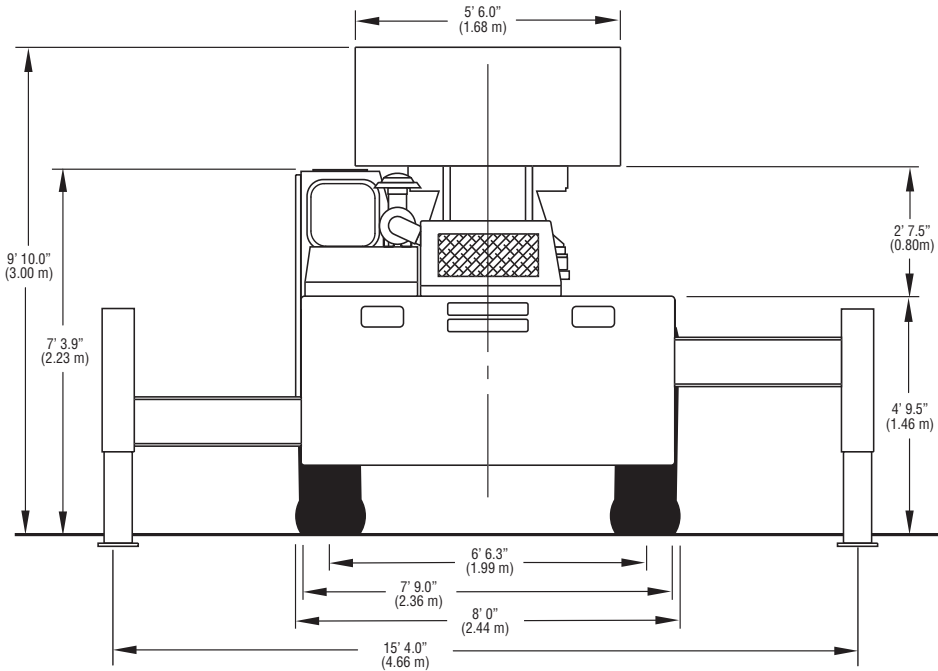
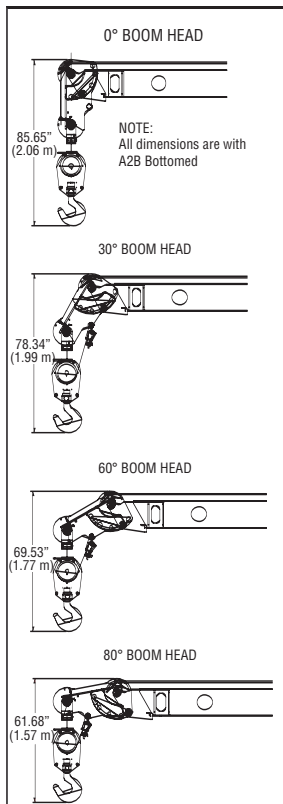
**Theoretical

dimensions

YB7722 / XL



5



YB7700 Series

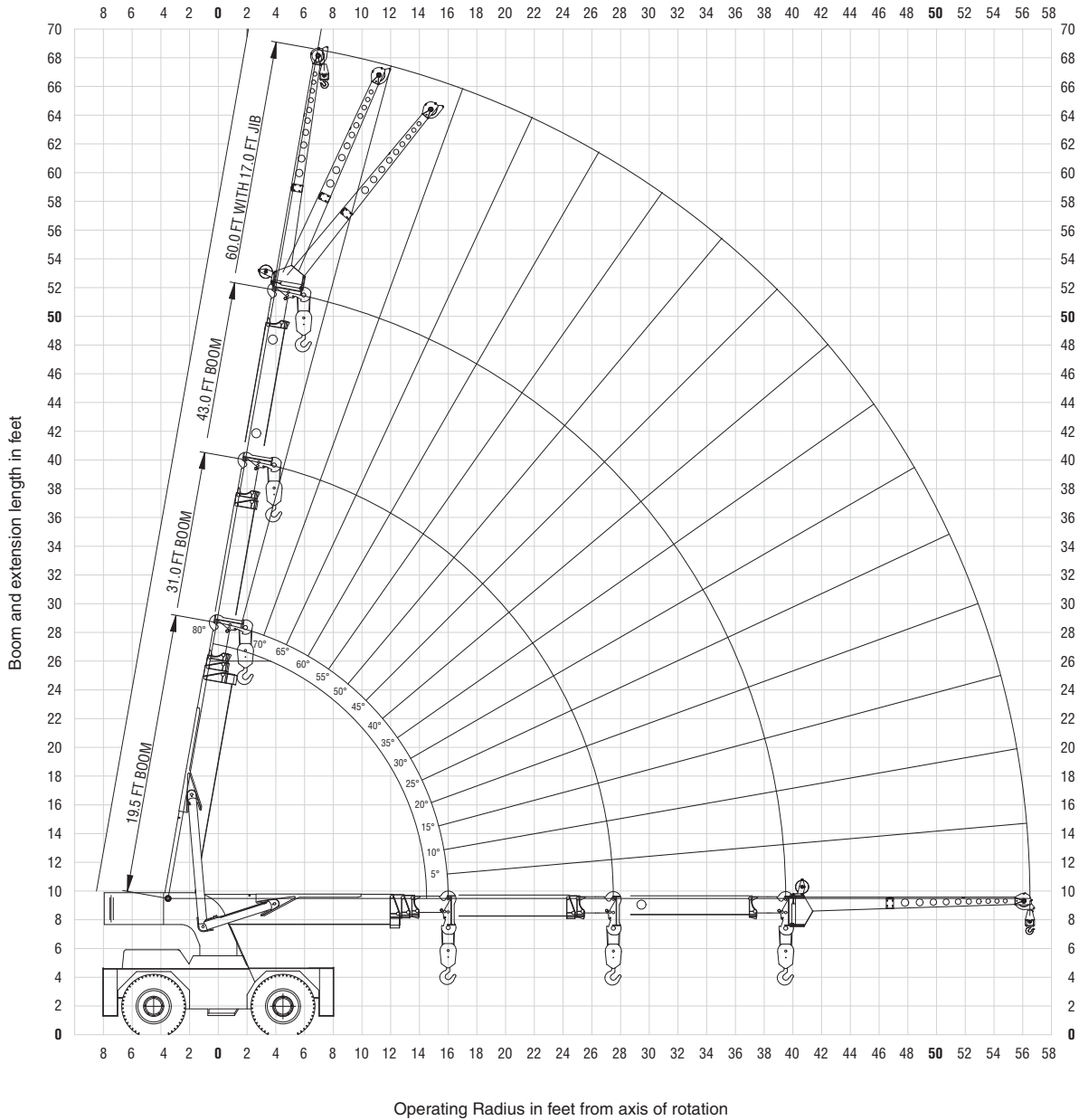
GROVE

Courtesy of Crane.Market

range diagram

YB7722 (3-section boom)

6



THIS CHART IS ONLY A GUIDE AND SHOULD NOT BE USED TO OPERATE THE CRANE. The individual crane's load chart, operating instructions and other instructional plates must be read and understood prior to operating the crane.

YB7700 Series

GROVE

Courtesy of Crane.Market

load chart

YB7722 (3-section boom)

7

| MAIN BOOM LOAD RATINGS ON OUTRIGGERS Extended and Down 360° or Retracted and Down Front/Rear | | | | | | | | | | | |
|---|------------------------|------------------------|------------------------|------------------------|------------------------|------------------------|------------------------|------------------------|------------------------|------------------------|------------------------|
| Radius (ft) | Boom Angle (deg) | 19.5 ft Boom | | 20.5-30 ft Boom | | 31 ft Boom | | 32-42 ft Boom | | 43 ft Boom | |
| | | Rated Load (lbs) | Rated Load (lbs) | Rated Load (lbs) | Rated Load (lbs) | Rated Load (lbs) | Rated Load (lbs) | Rated Load (lbs) | Rated Load (lbs) | Rated Load (lbs) | Rated Load (lbs) |
| 8.5 | 58 | 44000 | 26500 | 71 | 26500 | 25400 | 76 | 25400 | | | |
| 10 | 52 | 40000 | 31600 | 68 | 31600 | 28000 | 74 | 28000 | | | |
| 12 | 44 | 33800 | 30500 | 64 | 30500 | 25000 | 72 | 25000 | | | |
| 14 | 33 | 28500 | 28500 | 59 | 28500 | 22600 | 69 | 22600 | | | |
| 16 | 0 | 24900 | 24900 | 55 | 25700 | 20000 | 66 | 20000 | | | |
| 18 | - | - | 22800 | 50 | 22800 | 17900 | 63 | 17900 | | | |
| 20 | - | - | 20200 | 45 | 20200 | 16100 | 60 | 16100 | | | |
| 22 | - | - | 17800 | 39 | 17800 | 14600 | 56 | 14600 | | | |
| 24 | - | - | - | 31 | 15360 | 13300 | 53 | 13300 | | | |
| 26 | - | - | - | 22 | 13250 | 12300 | 49 | 12300 | | | |
| 27.5 | - | - | 11600 | 0 | 11600 | 11600 | 47 | 11600 | | | |
| 30 | - | - | - | - | - | 9900 | 42 | 10500 | | | |
| 32 | - | - | - | - | - | 8800 | 37 | 9800 | | | |
| 34 | - | - | - | - | - | 7800 | 32 | 8700 | | | |
| 36 | - | - | - | - | - | 7100 | 26 | 7800 | | | |
| 39.5 | - | - | - | - | - | 6400 | 0 | 6400 | | | |

| MAIN BOOM LOAD RATINGS ON OUTRIGGERS Retracted and Down 360° | | | | | | | | | | | |
|---|------------------------|------------------------|------------------------|------------------------|------------------------|------------------------|------------------------|------------------------|------------------------|------------------------|------------------------|
| Radius (ft) | Boom Angle (deg) | 19.5 ft Boom | | 20.5-30 ft Boom | | 31 ft Boom | | 32-42 ft Boom | | 43 ft Boom | |
| | | Rated Load (lbs) | Rated Load (lbs) | Rated Load (lbs) | Rated Load (lbs) | Rated Load (lbs) | Rated Load (lbs) | Rated Load (lbs) | Rated Load (lbs) | Rated Load (lbs) | Rated Load (lbs) |
| 8.5 | 58 | 31000 | 26500 | 71 | 26500 | 25400 | 76 | 25400 | | | |
| 10 | 52 | 24000 | 22300 | 68 | 22300 | 22000 | 74 | 22000 | | | |
| 12 | 44 | 17200 | 16300 | 64 | 16300 | 16300 | 72 | 17000 | | | |
| 14 | 33 | 13300 | 12500 | 59 | 12500 | 12500 | 69 | 13600 | | | |
| 16 | 0 | 10200 | 9800 | 55 | 9800 | 9800 | 66 | 11100 | | | |
| 18 | - | - | 7900 | 50 | 7900 | 7900 | 63 | 9100 | | | |
| 20 | - | - | 6500 | 45 | 6500 | 6500 | 60 | 7500 | | | |
| 22 | - | - | 5300 | 39 | 5300 | 5300 | 56 | 6200 | | | |
| 24 | - | - | 4300 | 31 | 4300 | 4300 | 53 | 5200 | | | |
| 26 | - | - | 3500 | 22 | 3500 | 3500 | 49 | 4400 | | | |
| 27.5 | - | - | 2900 | 0 | 2900 | 2900 | 47 | 3900 | | | |
| 30 | - | - | - | - | - | 2600 | 42 | 3200 | | | |
| 32 | - | - | - | - | - | 2300 | 37 | 2700 | | | |
| 34 | - | - | - | - | - | 1900 | 32 | 2300 | | | |
| 36 | - | - | - | - | - | 1750 | 26 | 1900 | | | |
| 39.5 | - | - | - | - | - | 1400 | 0 | 1400 | | | |

| MAIN BOOM ON RUBBER | | |
|------------------------|--------------------------|-------------------------|
| Radius (ft) | Any Boom Length | |
| | Front Rating (lbs) | 360° Rating (lbs) |
| 6 | 30000 | 21000 |
| 8 | 28000 | 17900 |
| 10 | 25000 | 15000 |
| 12 | 19600 | 12400 |
| 14 | 15600 | 9900 |
| 16 | 12700 | 7700 |
| 18 | 10300 | 6300 |
| 20 | 8300 | 4900 |
| 22 | 6800 | 3900 |
| 24 | 5800 | 3100 |
| 26 | 4900 | 2500 |
| 28 | 4200 | 2100 |
| 30 | 3700 | 1800 |
| 32 | 3300 | 1550 |
| 34 | 3000 | 1300 |
| 36 | 2700 | 1100 |
| 38 | 2500 | 950 |
| 40 | 2200 | 800 |

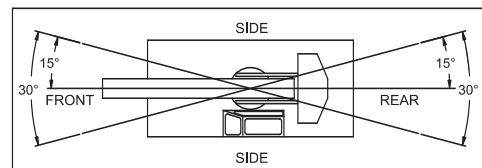
| 17 FT JIB CAP. ON EXT. OUTRIGGERS (lbs) | | | | |
|---|-----------------------|-----------------------|-----------------------|--|
| Main Boom Angle (deg) | Jib Offset Angle | | | |
| | 0 deg | 15 deg | 30 deg | |
| | Any Boom Length | Any Boom Length | Any Boom Length | |
| 80 | - | 5000 | 3500 | |
| 75 | 7500 | 4400 | 3100 | |
| 70 | 6100 | 3900 | 2800 | |
| 65 | 5000 | 3500 | 2550 | |
| 60 | 4300 | 3150 | 2350 | |
| 55 | 3800 | 2850 | 2200 | |
| 50 | 3400 | 2600 | 2100 | |
| 45 | 3050 | 2400 | 2000 | |
| 40 | 2800 | 2250 | 1950 | |
| 35 | 2600 | 2150 | 1900 | |
| 30 | 2400 | 2080 | 1830 | |
| 25 | 2300 | 2050 | - | |
| 20 | 2200 | 2000 | - | |
| 15 | 2100 | 1950 | - | |
| 10 | 2050 | - | - | |
| 5 | 2020 | - | - | |
| 0 | 2000 | - | - | |

SHADED AREAS ARE GOVERNED BY STRUCTURAL STRENGTH, DO NOT RELY ON TIPPING.

OPERATION OF THIS EQUIPMENT IN EXCESS OF RATING CHARTS AND DISREGARD OF INSTRUCTIONS IS DANGEROUS AND VOIDS WARRANTY.

MAXIMUM PERMISSIBLE SINGLE LINE PULL = 11,000 lbs

HOIST ROPE: 5/8" diameter
6 x 19 XIPS IWRC BRIGHT
Min. req'd breaking strength = 38,500 lbs



- The rated loads are the maximum lifting capacities as determined by operating radius, boom length, and boom angle. The operating radius is the horizontal distance from a projection of the axis of rotation to the supporting surface, before loading, to the center of vertical hoist line or tackle with load applied.
- Rated load columns for discrete boom lengths apply when actual boom length is within +/- 1.0 ft of discrete length. For other boom lengths, use appropriate intermediate boom length column.
- For operating radius not shown, use load rating of next larger radius.
- The rated loads shown on outriggers do not exceed 85% of actual tipping. The rated loads shown on rubber do not exceed 75% of actual tipping. These ratings are based on freely suspended loads with the crane leveled, standing on a firm, uniform supporting surface. Practical working loads depend on supporting surface, operating radius and other factors affecting stability. Hazardous surroundings, climatic conditions, experience of personnel and proper handling must all be taken into account by the operator.
- The weights of all load handling devices such as hooks, hook blocks, slings, etc., except the hoist rope, shall be considered as part of the load. See reduction chart.
- Ratings on outriggers are for either outriggers fully extended and down or fully retracted and down. Ratings for outriggers fully retracted and down will apply for any intermediate outrigger setting.
- Ratings on rubber depend on tire capacity, condition of tires and proper inflation pressure (110 psi). Loads on rubber may be transported at a maximum speed of 2.5 mph on a smooth hard level surface with boom retracted to the shortest length possible and centered over front. For 360° ratings on rubber, rear axle oscillation locks must be in place. Do not use jib with crane on rubber.
- The maximum combined total boom and deck load is 20,000 lbs. The maximum deck load only is 30,000 lbs.
- Do not induce any external side loads to boom or jib.

| RATING REDUCTIONS FOR LOAD HANDLING DEVICES INSTALLED (lbs) | | |
|--|-------------------|-------------|
| | FROM MAIN BOOM | FROM JIB |
| MAIN BLOCK | 400 | N/A |
| HOOK & BALL | 100 | 100 |
| JIB STOWED | 0 | N/A |
| JIB DEPLOYED | 500 | 0 |

THIS CHART IS ONLY A GUIDE AND SHOULD NOT BE USED TO OPERATE THE CRANE. The individual crane's load chart, operating instructions and other instructional plates must be read and understood prior to operating the crane.

YB7700 Series

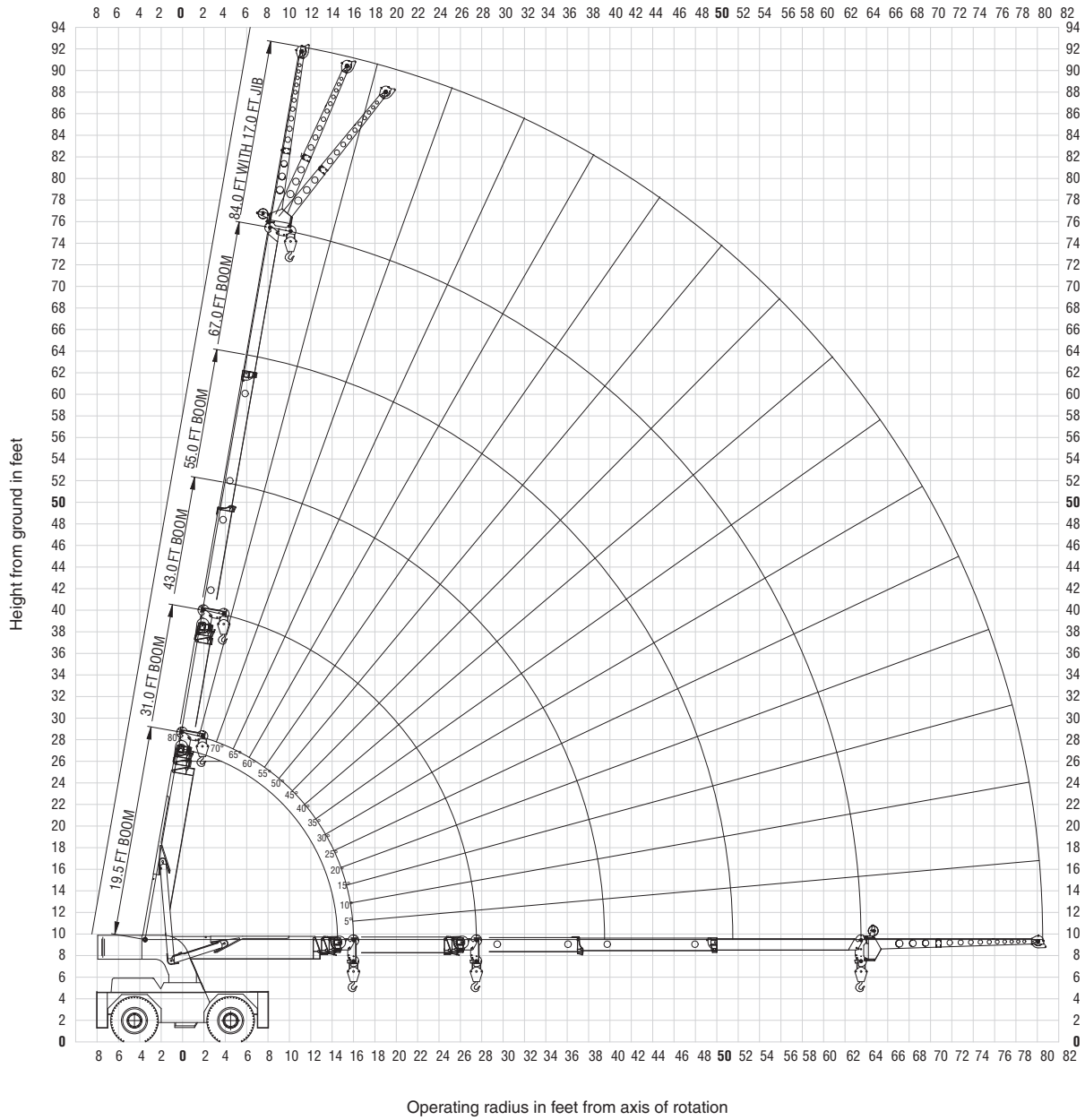
GROVE

Courtesy of Crane.Market

range diagram

YB7722 XL (5-section boom)

8



YB7700 Series

THIS CHART IS ONLY A GUIDE AND SHOULD NOT BE USED TO OPERATE THE CRANE. The individual crane's load chart, operating instructions and other instructional plates must be read and understood prior to operating the crane.

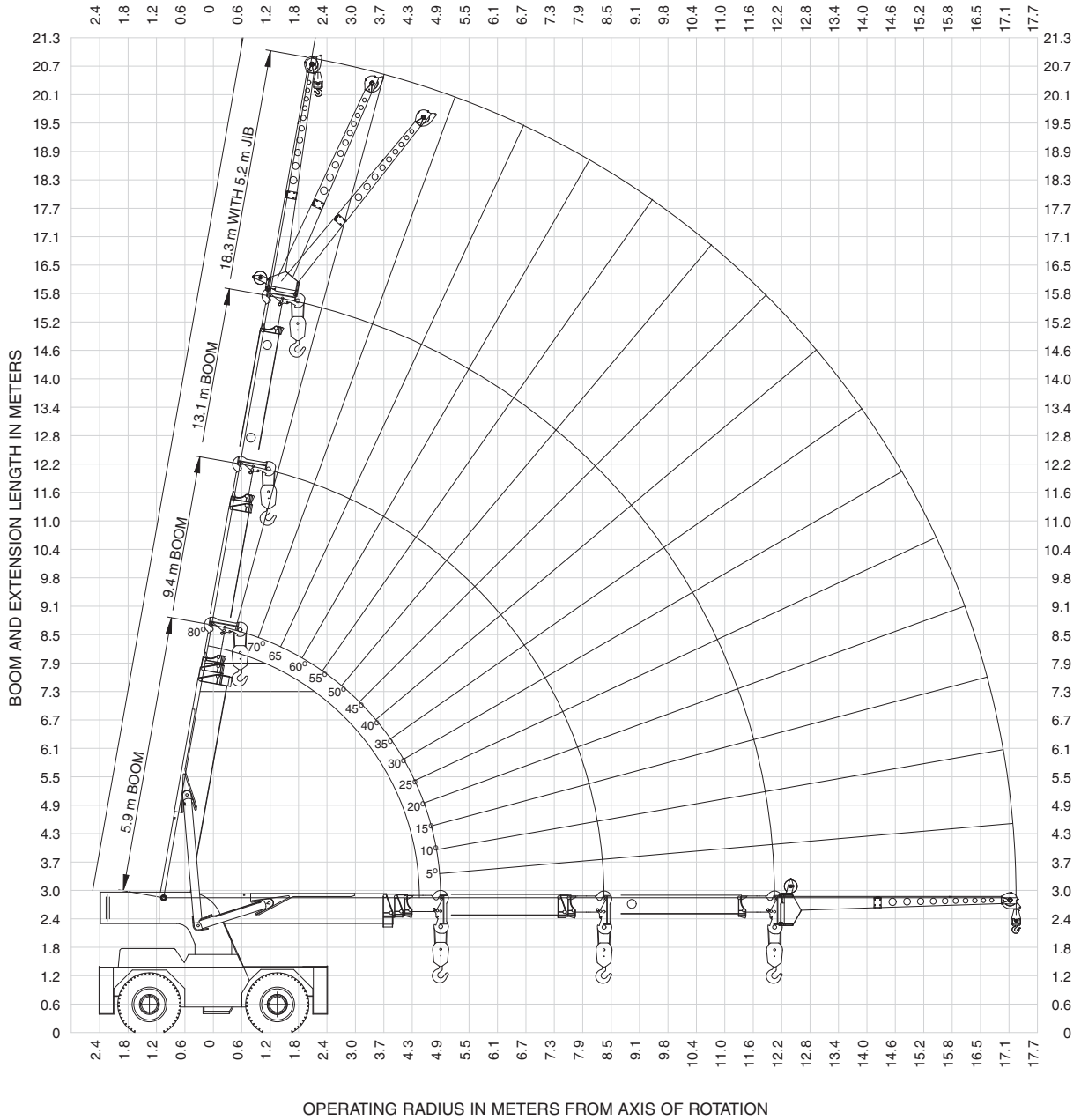
GROVE

Courtesy of Crane.Market

range diagram

YB7722 (3-section boom)

10



YB7700 Series

THIS CHART IS ONLY A GUIDE AND SHOULD NOT BE USED TO OPERATE THE CRANE. The individual crane's load chart, operating instructions and other instructional plates must be read and understood prior to operating the crane.

GROVE

Courtesy of Crane.Market

DIN/ISO load chart

YB7722 (3-section boom)

| MAIN BOOM LOAD RATINGS ON OUTRIGGERS Extended and Down 360° or Retracted and Down Front/Rear | | | | | | | | |
|---|------------------------|-----------------------|-----------------------|------------------------|-----------------------|-----------------------|------------------------|-----------------------|
| Radius (m) | 5.9 m Boom | | 6.2-9.1 m Boom | | 9.4 m Boom | | 13.1 m Boom | |
| | Boom Angle (deg) | Rated Load (kg) | Rated Load (kg) | Boom Angle (deg) | Rated Load (kg) | Rated Load (kg) | Boom Angle (deg) | Rated Load (kg) |
| 2.6 | 58 | 19960 | 14330 | 71 | 14330 | 12700 | 76 | 12700 |
| 3.0 | 52 | 18140 | 14330 | 68 | 14330 | 12700 | 74 | 12700 |
| 3.7 | 44 | 15350 | 13830 | 64 | 13830 | 11340 | 72 | 11340 |
| 4.3 | 33 | 12930 | 12930 | 59 | 12930 | 10270 | 69 | 10270 |
| 4.9 | 0 | 10740 | 10740 | 55 | 11660 | 9090 | 66 | 9090 |
| 5.5 | - | - | 10340 | 50 | 10340 | 8110 | 63 | 8110 |
| 6.1 | - | - | 8900 | 45 | 8900 | 7300 | 60 | 7300 |
| 6.7 | - | - | 7710 | 39 | 7710 | 6620 | 56 | 6620 |
| 7.3 | - | - | 6550 | 31 | 6550 | 6050 | 53 | 6050 |
| 7.9 | - | - | 5520 | 22 | 5520 | 5520 | 49 | 5560 |
| 8.4 | - | - | 4790 | 0 | 4790 | 4790 | 47 | 5150 |
| 9.1 | - | - | - | - | - | 4050 | 42 | 4630 |
| 9.8 | - | - | - | - | - | 3580 | 37 | 4050 |
| 10.4 | - | - | - | - | - | 3160 | 32 | 3560 |
| 11.0 | - | - | - | - | - | 2880 | 26 | 3180 |
| 12.0 | - | - | - | - | - | 2580 | 0 | 2580 |

| MAIN BOOM LOAD RATINGS ON OUTRIGGERS Retracted and Down 360° | | | | | | | | |
|---|------------------------|-----------------------|-----------------------|------------------------|-----------------------|-----------------------|------------------------|-----------------------|
| Radius (m) | 5.9 m Boom | | 6.2-9.1 m Boom | | 9.4 m Boom | | 13.1 m Boom | |
| | Boom Angle (deg) | Rated Load (kg) | Rated Load (kg) | Boom Angle (deg) | Rated Load (kg) | Rated Load (kg) | Boom Angle (deg) | Rated Load (kg) |
| 2.6 | 58 | 13070 | 13070 | 71 | 13270 | 12700 | 76 | 12700 |
| 3.0 | 52 | 10110 | 9360 | 68 | 9360 | 9020 | 74 | 9020 |
| 3.7 | 44 | 7190 | 6800 | 64 | 6800 | 6800 | 72 | 7100 |
| 4.3 | 33 | 5520 | 5210 | 59 | 5210 | 5210 | 69 | 5630 |
| 4.9 | 0 | 4230 | 4050 | 55 | 4050 | 4050 | 66 | 4630 |
| 5.5 | - | - | 3210 | 50 | 3210 | 3210 | 63 | 3730 |
| 6.1 | - | - | 2620 | 45 | 2620 | 2620 | 60 | 3060 |
| 6.7 | - | - | 2100 | 39 | 2100 | 2100 | 56 | 2490 |
| 7.3 | - | - | 1710 | 31 | 1710 | 1710 | 53 | 2060 |
| 7.9 | - | - | 1340 | 22 | 1340 | 1340 | 49 | 1720 |
| 8.4 | - | - | 1080 | 0 | 1080 | 1080 | 47 | 1510 |
| 9.1 | - | - | - | - | - | 950 | 42 | 1200 |
| 9.8 | - | - | - | - | - | 820 | 37 | 1000 |
| 10.4 | - | - | - | - | - | 670 | 32 | 820 |
| 11.0 | - | - | - | - | - | 590 | 26 | 660 |
| 12.0 | - | - | - | - | - | 450 | 0 | 450 |

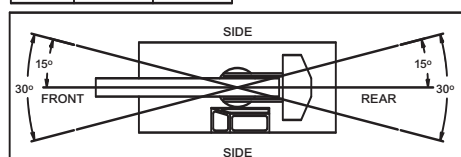
| MAIN BOOM ON RUBBER | | |
|------------------------|-------------------------|------------------------|
| Radius (m) | Any Boom Length | |
| | Front Rating (kg) | 360° Rating (kg) |
| 1.8 | 13610 | 9520 |
| 2.4 | 12700 | 8120 |
| 3.0 | 11340 | 6800 |
| 3.7 | 8890 | 5470 |
| 4.3 | 6990 | 4340 |
| 4.9 | 5570 | 3320 |
| 5.5 | 4520 | 2680 |
| 6.1 | 3620 | 2070 |
| 6.7 | 2940 | 1620 |
| 7.3 | 2480 | 1260 |
| 7.9 | 2070 | 980 |
| 8.5 | 1760 | 810 |
| 9.1 | 1530 | 670 |
| 9.8 | 1350 | 550 |
| 10.4 | 1210 | 440 |
| 11.0 | 1080 | 350 |
| 11.6 | 960 | 280 |
| 12.0 | 900 | 210 |

**SHADED AREAS ARE GOVERNED BY
STRUCTURAL STRENGTH, DO NOT RELY
ON TIPPING.**

**OPERATION OF THIS EQUIPMENT IN EXCESS
OF RATING CHARTS AND DISREGARD OF
INSTRUCTIONS IS DANGEROUS AND VOIDS
WARRANTY.**

**MAXIMUM PERMISSIBLE SINGLE LINE PULL
= 4990 kg**

**WIRE ROPE: 16 mm dia.
6 x 19 XXIPS IWRC BRIGHT
Min. req'd breaking strength = 188.4 kN**



| RATING REDUCTIONS FOR LOAD HANDLING DEVICES INSTALLED (kg) | | |
|---|-------------------|-------------|
| | FROM MAIN BOOM | FROM JIB |
| MAIN BLOCK | 180 | N/A |
| HOOK & BALL | 50 | 50 |
| JIB STOWED | 0 | N/A |
| JIB DEPLOYED | 230 | 0 |

| 5.2 m JIB CAP. ON EXT. OUTRIGGERS (kg) | | | |
|--|-----------------------|-----------------------|-----------------------|
| Main Boom Angle (deg) | Jib Offset Angle | | |
| | 0 deg | 15 deg | 30 deg |
| | Any Boom Length | Any Boom Length | Any Boom Length |
| 80 | - | 2270 | 1590 |
| 75 | 3400 | 2000 | 1410 |
| 70 | 2770 | 1770 | 1270 |
| 65 | 2270 | 1590 | 1160 |
| 60 | 1950 | 1430 | 1070 |
| 55 | 1720 | 1290 | 1000 |
| 50 | 1540 | 1180 | 950 |
| 45 | 1380 | 1090 | 910 |
| 40 | 1270 | 1020 | 880 |
| 35 | 1180 | 980 | 860 |
| 30 | 1090 | 940 | 830 |
| 25 | 1040 | 930 | - |
| 20 | 1000 | 910 | - |
| 15 | 950 | 880 | - |
| 10 | 930 | - | - |
| 5 | 920 | - | - |
| 0 | 910 | - | - |

- 1) The rated loads are the maximum lifting capacities as determined by operating radius, boom length, and boom angle. The operating radius is the horizontal distance from a projection of the axis of rotation to the supporting surface, before loading, to the center of vertical hoist line or tackle with load applied.
- 2) Rated load columns for discrete boom lengths apply when actual boom length is within +/- 0.3 m of discrete length. For other boom lengths, use appropriate intermediate boom length column.
- 3) For operating radius not shown, use load rating of next larger radius.
- 4) The rated loads shown on outriggers do not exceed 80% of actual tipping. The rated loads shown on rubber do not exceed 75% of actual tipping. These ratings are based on freely suspended loads with the crane leveled, standing on a firm, uniform supporting surface. Practical working loads depend on supporting surface, operating radius and other factors affecting stability. Hazardous surroundings, climatic conditions, experience of personnel and proper handling must all be taken into account by the operator.
- 5) The weights of all load handling devices such as hooks, hook blocks, slings, etc., except the hoist rope, shall be considered as part of the load. See reduction chart.
- 6) Ratings on outriggers are for either outriggers fully extended and down or fully retracted and down. Ratings for outriggers fully retracted and down will apply for any intermediate outrigger setting.
- 7) Ratings on rubber depend on tire capacity, condition of tires and proper inflation pressure (7.6 bar). Loads on rubber may be transported at a maximum speed of 1.4 km/h on a smooth hard level surface with boom retracted to the shortest length possible and centered over front. For 360° ratings on rubber, rear axle oscillation locks must be in place. Do not use jib with crane on rubber.
- 8) The maximum combined total boom and deck load is 9070 kg. The maximum deck load only is 13610 kg.
- 9) Do not induce any external side loads to boom or jib.

11

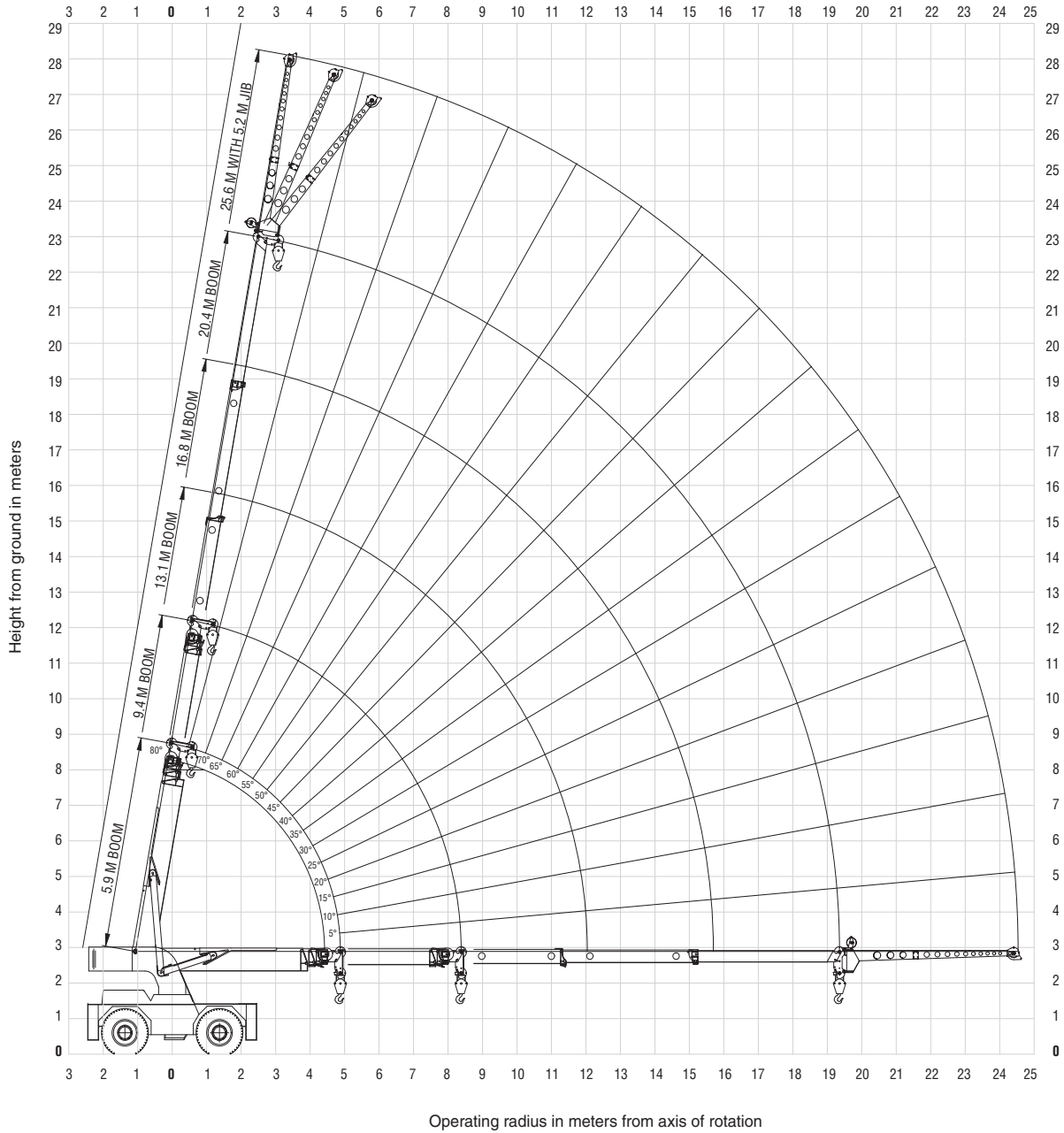
YB7700 Series

THIS CHART IS ONLY A GUIDE AND SHOULD NOT BE USED TO OPERATE THE CRANE. The individual crane's load chart, operating instructions and other instructional plates must be read and understood prior to operating the crane.

range diagram

YB7722XL (5-section boom)

12



YB7700 Series

THIS CHART IS ONLY A GUIDE AND SHOULD NOT BE USED TO OPERATE THE CRANE. The individual crane's load chart, operating instructions and other instructional plates must be read and understood prior to operating the crane.

GROVE

Courtesy of Crane.Market

YB7700 Series

GROVE

Regional Headquarters

Americas

Manitowoc, Wisconsin, USA

Tel: +1 920 684 6621

Fax: +1 920 683 6278

Shady Grove, Pennsylvania, USA

Tel: +1 717 597 8121

Fax: +1 717 597 4062

Regional Offices

Americas

Brazil

Alphaville

Tel: +55 11 3103 0200

Fax: +55 11 4688 2013

Mexico

Monterrey

Tel: +52 81 8124 0128

Fax: +52 81 8124 0129

Europe, Middle East, Africa

Algeria

Hydra

Tel: +21 3 21 48 1173

Fax: +21 3 21 48 1454

Czech Republic

Netvorice

Tel: +420 317 78 9313

Fax: +420 317 78 9314

France

Baudemont

Tel: +33 385 28 2589

Fax: +33 385 28 0430

Cergy

Tel: +33 130 31 3150

Fax: +33 130 38 6085

Decines

Tel: +33 472 81 5000

Fax: +33 472 81 5010

Germany

Langenfeld

Tel: +49 21 73 8909-0

Fax: +49 21 73 8909 30

Hungary

Budapest

Tel: +36 13 39 8622

Fax: +36 13 39 8622

Italy

Parabiago

Tel: +390 331 49 3311

Fax: +390 331 49 3330

Europe, Middle East, Africa

Ecully, France

Tel: +33 472 18 2020

Fax: +33 472 18 2000

Netherlands

Breda

Tel: +31 76 578 3999

Fax: +31 76 578 3978

Poland

Warsaw

Tel: +48 22 843 3824

Fax: +48 22 843 3471

Portugal

Alfena

Tel: +351 229 69 8840

Fax: +351 229 69 8848

Lisbon

Tel: +351 212 109 340

Fax: +351 212 109 349

Russia

Moscow

Tel: +7 495 641 2359

Fax: +7 495 641 2358

U.A.E.

Dubai

Tel: +971 4 3381 861

Fax: +971 4 3382 343

U. K.

Middlesex

Tel: +44 1 895 43 0053

Fax: +44 1 895 45 9500

Sunderland

Tel: +44 191 522 2000

Fax: +44 191 522 2052

Asia – Pacific

Australia

Brisbane

38 Suscatand Street

Rocklea Queensland 4106

Tel: +617 3274 5879

Fax: +617 3274 6558

Melbourne

1/46 Venture Drive

Sunshine West VIC 3020

Tel: +(03) 9336 1322

Fax: +(03) 9336 1300

Sydney

142 Magowar Road

Girraween, NSW 2145

Tel: +61 02 9896 4433

Fax: +61 02 9896 3122

Asia – Pacific

Shanghai, China

Tel: +86 21 51113579

Fax: +86 21 51113578

Singapore

Tel: +65 6264 1188

Fax: +65 6862 4142

China

Beijing

Tel: +86 10 58674761

Fax: +86 10 58674760

Xi'an

Tel: +86 29 87891465

Fax: +86 29 87884504

Korea

Seoul

Tel: +82 2 3439 0400

Fax: +82 2 3439 0405

Philippines

Makati City

Tel: +63 2 844 9437

Fax: +63 2 844 4712

Factories

Brazil

Alphaville

China

Zhangjiagang

France

Charlieu

La Clayette

Moulins

Germany

Wilhelmshaven

India

Calcutta

Pune

Italy

Niella Tanaro

Portugal

Baltar

Fânzeres

Slovakia

Saris

U.S.A.

Manitowoc

Port Washington

Shady Grove



Constant improvement and engineering progress make it necessary that we reserve the right to make specification, equipment and price changes without notice. Illustrations shown may include optional equipment and accessories, and may not include all standard equipment.