



# HA100 JRT

## Outstanding rough terrain driving features

- 4 wheel drive and 4 wheel steer
- Oscillating axle
- Differential wheel lock
- Ground clearance of 15 in
- Full proportional controls and simultaneous boom functions

## Optimal productivity

- Tightest turning radius on the market
- 70 ft 3 in of horizontal outreach
- Unrestricted working envelope



**Haulotte**   
GROUP

More than lifting

[www.haulotte-usa.com](http://www.haulotte-usa.com)



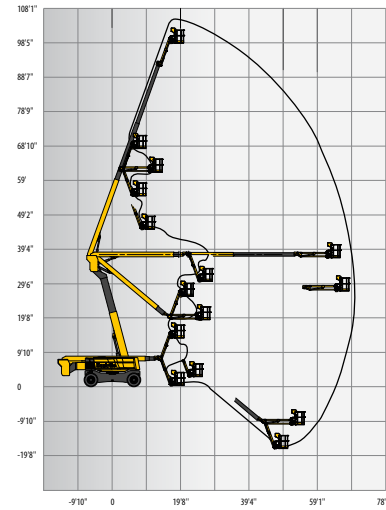
# HA100 JRT

## ROUGH TERRAIN ARTICULATING BOOMS

### TECHNICAL DATA

### HA100 JRT

Working height	103 ft 9 in
Platform height	97 ft 9 in
Horizontal outreach	70 ft 3 in
Up and over height	37 ft 3 in
Lift capacity	550 lbs
<b>F x G</b> Platform size	8 ft x 2 ft 7 in
<b>A</b> Length	37 ft 5 in
<b>H</b> Transport length	29 ft 2 in
<b>B</b> Width	8 ft 4 in
Width - with extended axles	10 ft 10 in
<b>C</b> Height - stowed	9 ft 2 in
Transport height	11 ft
Vertical jib rotation	140° (+70/-70)
Platform rotation	174° (+87/-87)
Turntable rotation	360°
Tailswing	10 ft 10 in
<b>D</b> Wheelbase	11 ft 6 in
<b>E</b> Ground clearance	15 in
Drive speed	0.3 - 3.1 mph
Gradeability	45 %
Outside turning radius – axles extended	18 ft 10 in
Outside turning radius – axles retracted	16 ft 8 in
Tires	445/65-22.5
Engine	62.4 kW / 84.9 hp
Weight	44,321 lbs



### STANDARD EQUIPMENT

- 4 wheel drive and 4 wheel steer
- Front oscillating axle
- 2 extendable axles
- Differential wheel lock
- Fully proportional controls
- 4 simultaneous movements
- 550 lbs (2 persons) load capacity unrestricted working envelope
- 8' platform
- AC power to the platform
- Rotating engine tray
- Safe to use in winds up to 37mph
- Tilt/load alarm and light
- Electric pump system and emergency descent
- 12 V battery / electrical control system
- Tow hooks and lift hooks
- Hour meter
- Low fuel level indicator (upper control box)
- Engine pre-heat system
- Foam-filled rough terrain tires
- Electric horn
- Hydrostatic transmission
- Swing lockpin for transport

### OPTIONS AND ACCESSORIES

- AC generator 110V / 3kW
- Hydraulic oil cooler
- Hydraulic oil in tank and circuit for warm countries
- Biodegradable hydraulic oil
- Automatic Overspeed Air Shutdown Valve (Electric one-way valve, flame arrestor, spark arrestor)
- Arctic package (consult factory)
- Air line to platform
- Upper control box protection cover (transparent plastic and fixed place)
- Battery cut-off
- Travel alarm
- Alarm package (motion alarm)
- 55W Platform worklight
- Flashing beacon

2420004420 - We reserve the right to modify the technical characteristics of this document without notice - 07/2013

