

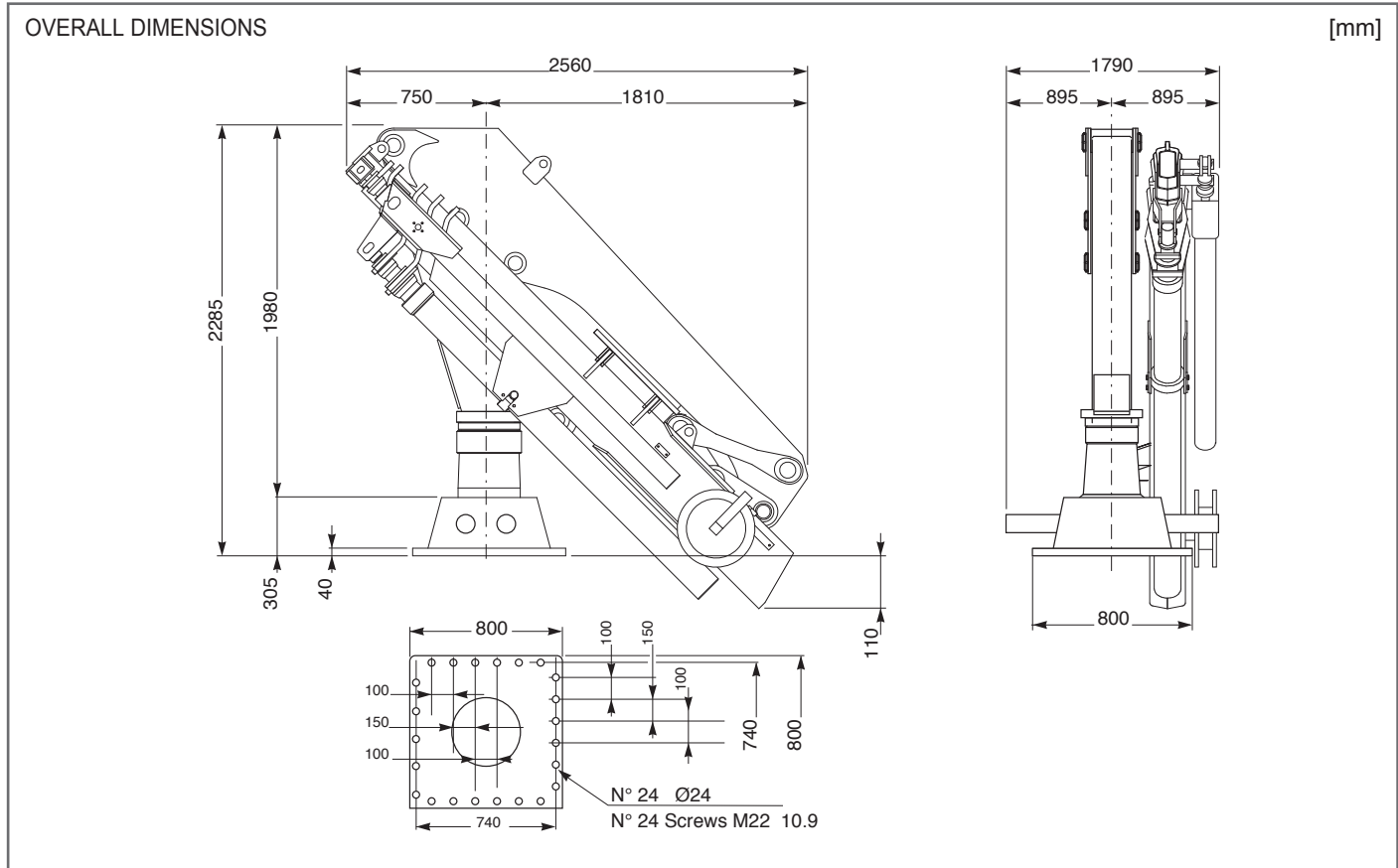


Custom Built Marine & Offshore Cranes

FULLY FOLDABLE CRANE

# HLM 25-5S MODEL

## TECHNICAL SPECIFICATION



TECHNICAL DATA					
Hydraulic extensions	N°	5	Empty weight of the crane	kg	3480
Net lifting moment	t-m	25	Recommended amount of oil	lt	180
Slewing torque	kg-m	2900	Slewing speed	rpm	1
Slewing angle (continuous)	°	400	Main boom lifting time	sec	50
Pump capacity	lt/min	50	Secondary boom articulation time	sec	50
Max working pressure	bar	240	Boom element extension time	sec	80
<b>STANDARD FEATURES</b>			<b>AVAILABLE OPTIONS</b>		
			1200 kg direct pull winch rope Ø 10		
			Winch limit switch		
			Column-mounted control panel		
			Load limiting device		
			Size 5 electrohydraulic power pack (22 kW)		
			Control panel out of the crane		

July 2015

HLM25-5S Rev.00

The technical data contained in this card are only indicative and can be changed without notice.

HEILA CRANES S.p.A. | Via Romana 34/6 - 42028 Poviglio (RE) Italy | info@heila.com | www.heila.com

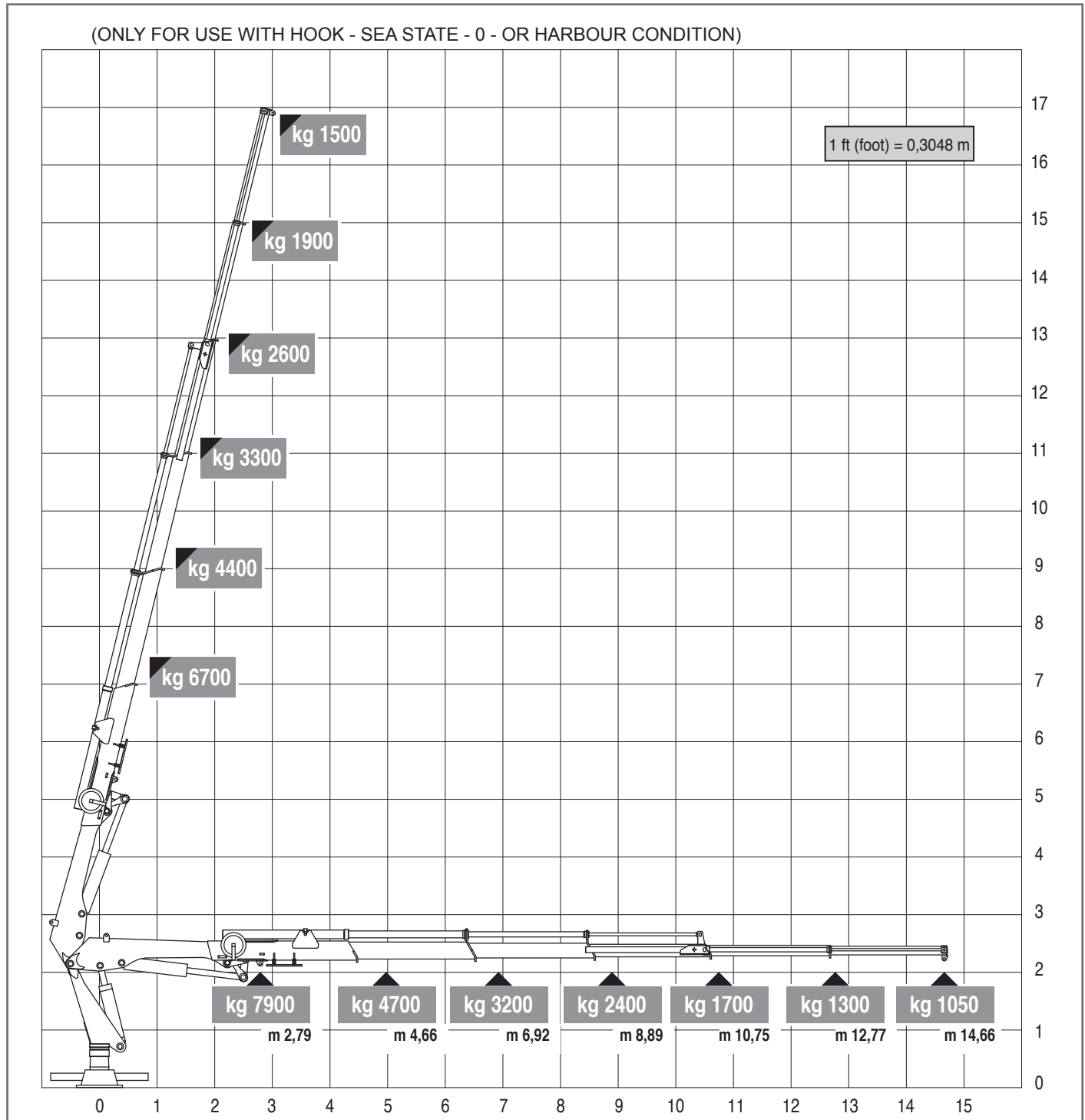


Custom Built Marine & Offshore Cranes

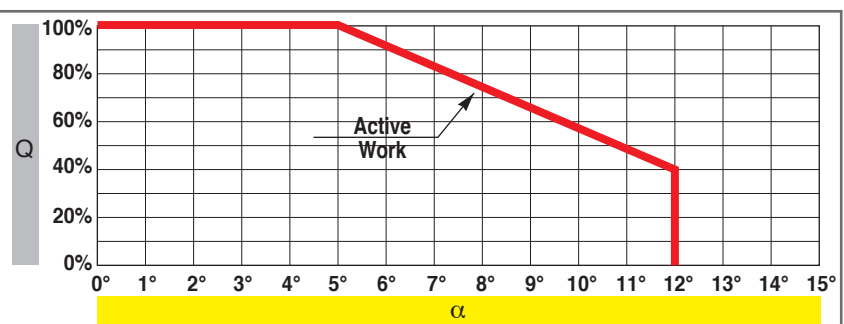
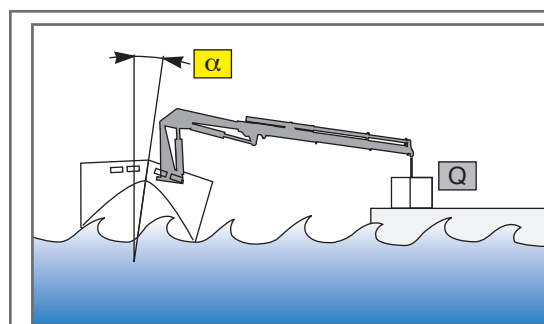
FULLY FOLDABLE CRANE

# HLM 25-5S MODEL

## TECHNICAL SPECIFICATION



July 2015



The technical data contained in this card are only indicative and can be changed without notice.

HLM25-5S Rev.00

HEILA CRANES S.p.A. | Via Romana 34/6 - 42028 Poviglio (RE) Italy | info@heila.com | www.heila.com