

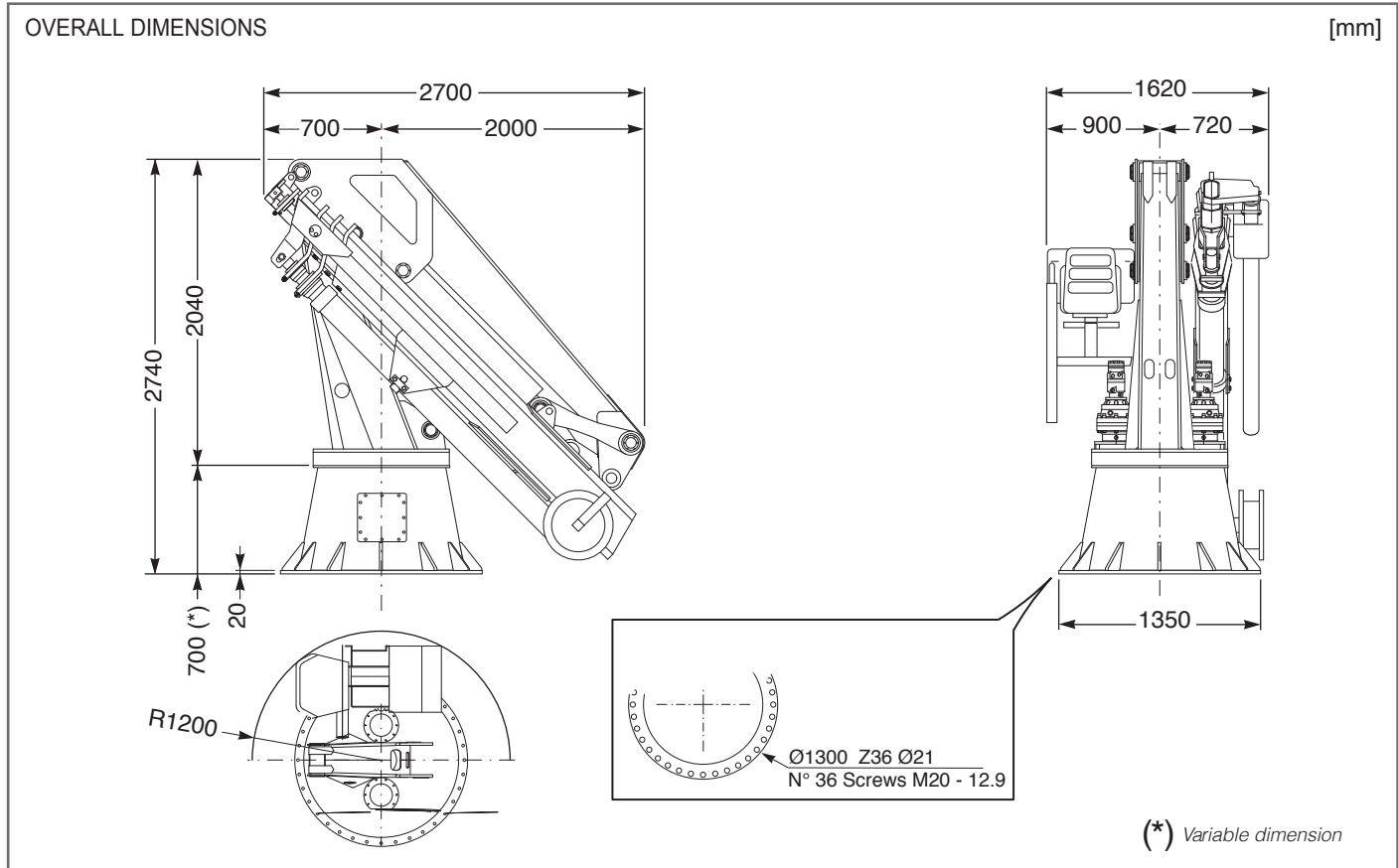


Custom Built Marine & Offshore Cranes

FULLY FOLDABLE CRANE

# HLRM 45-5S MODEL

## TECHNICAL SPECIFICATION



TECHNICAL DATA					
Hydraulic extensions	N°	5	Empty weight of the crane	kg	4900
Net lifting moment	t-m	45	Recommended amount of oil	lt	250
Slewing torque	kg-m	8000	Slewing speed	rpm	0,8
Slewing angle (continuous)	°	360	Main boom lifting time	sec	50
Pump capacity	lt/min	60	Secondary boom articulation time	sec	50
Max working pressure	bar	285	Boom element extension time	sec	80
STANDARD FEATURES			AVAILABLE OPTIONS		
Slewing continuous			1500 kg direct pull winch rope Ø 10		
Proportional distributor			Winch limit switch		
Load limiting device			Slewing limit switch (400°)		
			Cabin with windows and wipers		
			Size 6 electrohydraulic power pack (HP 41)		
			Control panel out of the crane		
			1st manual extension 1000 kg @ 16,72 m		

The technical data contained in this card are only indicative and can be changed without notice.

HLRM45-5S Rev.00

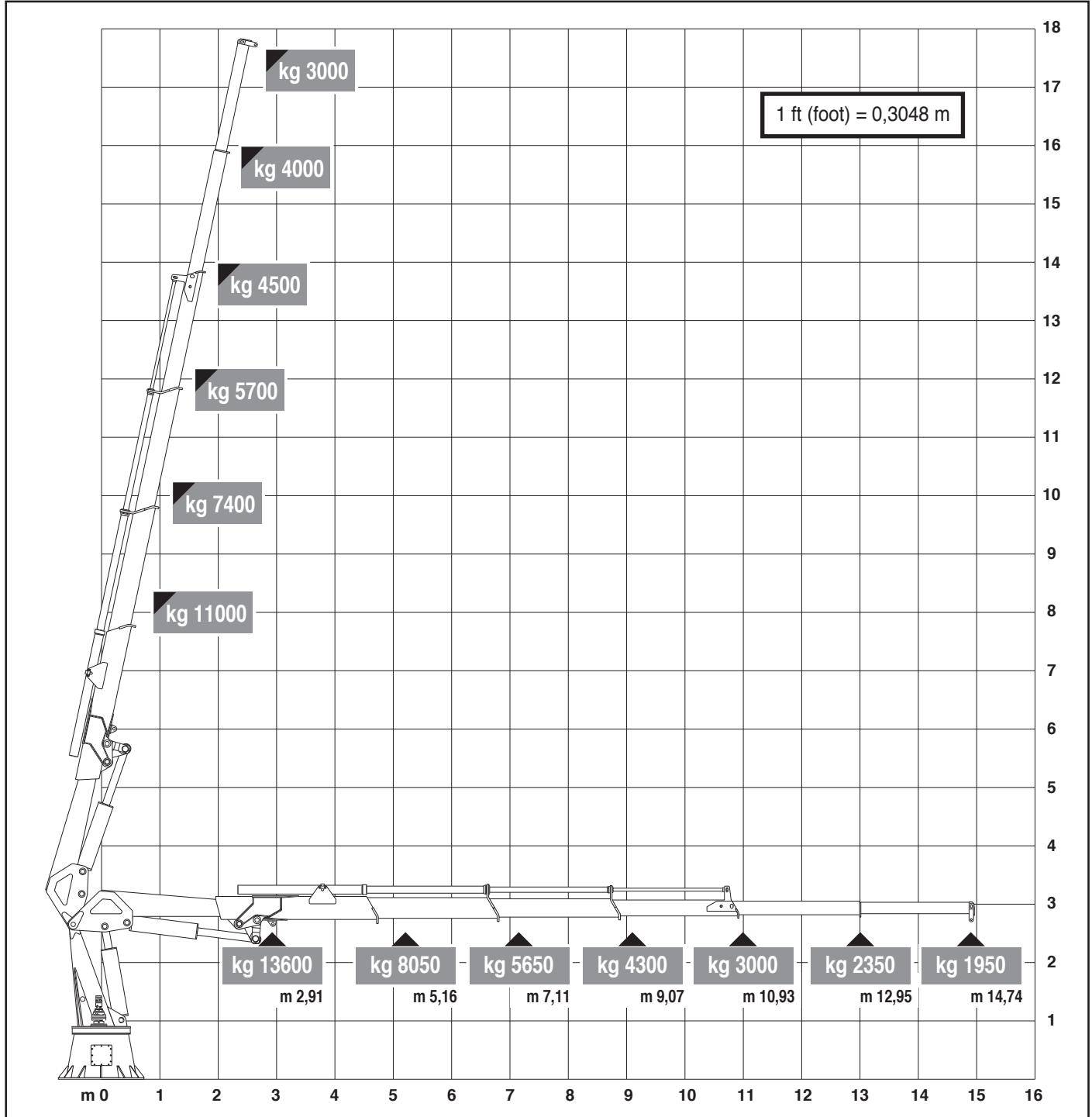


Custom Built Marine & Offshore Cranes

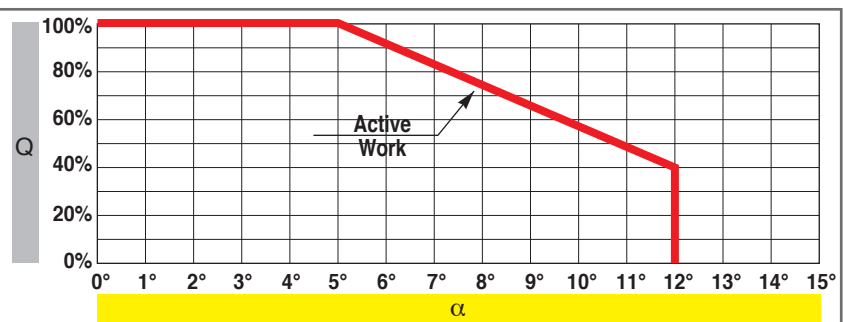
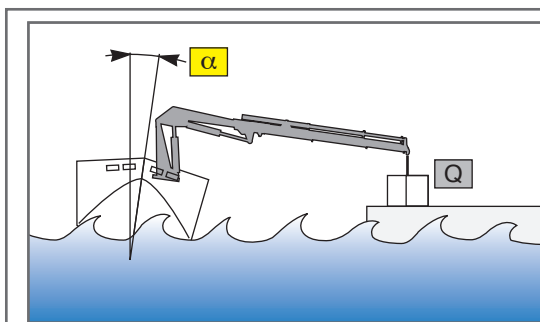
FULLY FOLDABLE CRANE

# HLRM 45-5S MODEL

## TECHNICAL SPECIFICATION



December 2015



The technical data contained in this card are only indicative and can be changed without notice.

HLRM45-5S Rev.00

HEILA CRANES S.p.A. | Via Romana 34/6 - 42028 Poviglio (RE) Italy | info@heila.com | www.heila.com