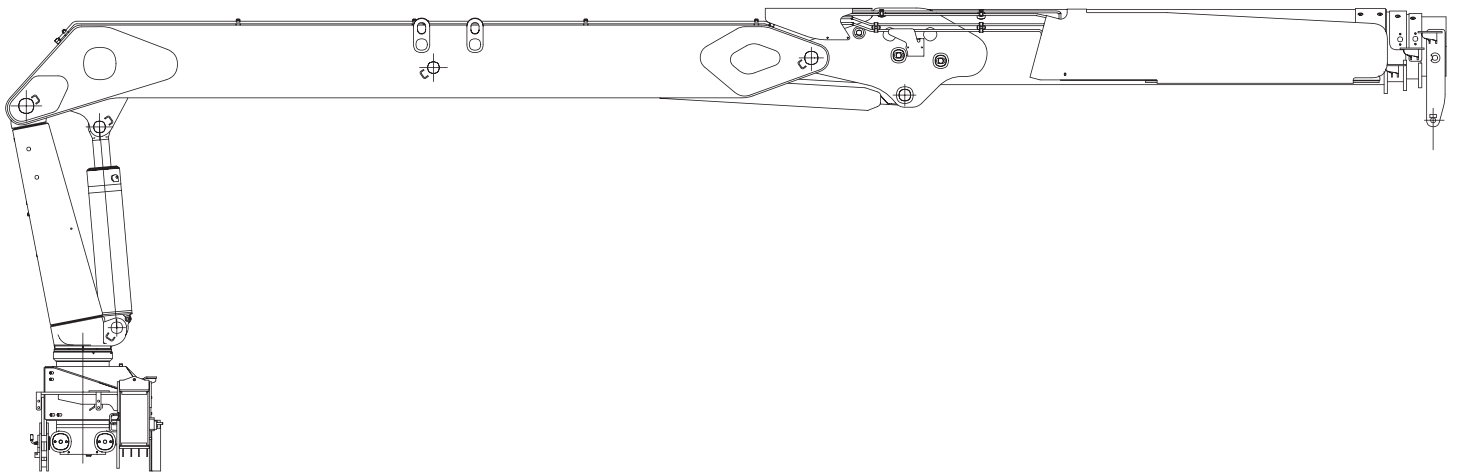


Hiab 255 K

Range 22–25 tm

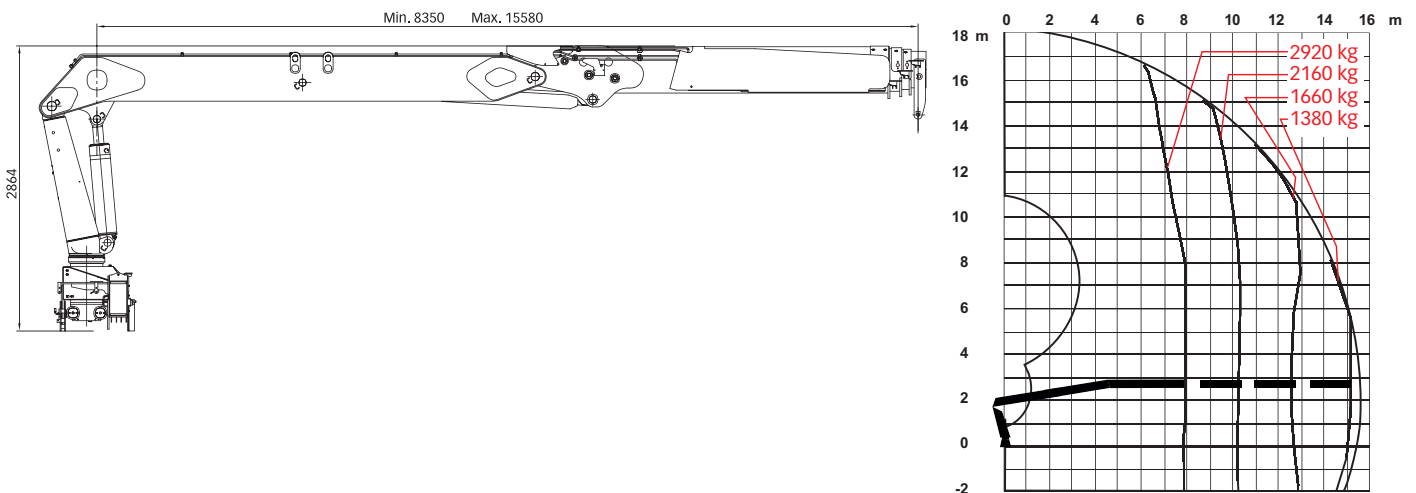


Basic data

Hiab 255 K Basic data

Technical data	K-2 CLX	K-2 HiPro	K-2 Pro	K-3 CLX	K-3 HiPro	K-3 Pro
Max. lifting capacity (kNm)	226	245	226	212	231	212
Outreach, hydraulic extensions (m)	13.2	13.2	13.2	15.6	15.6	15.6
Outreach / lifting capacity (m/kg)	8.0 / 2840	8.0 / 3050	8.0 / 2840	8.0 / 2700	8.0 / 2920	8.0 / 2700
	10.3 / 2140	10.3 / 2300	10.3 / 2140	10.2 / 1980	10.2 / 2160	10.2 / 1980
	12.8 / 1680	12.8 / 1840	12.8 / 1680	12.7 / 1520	12.7 / 1660	12.7 / 1520
				15.1 / 1260	15.1 / 1380	15.1 / 1260
Slewing angle (°)	450	450	450	450	450	450
Height in folded position (mm)	2864	2864	2864	2864	2864	2864
Width in folded position (mm)	2500	2500	2500	2500	2500	2500
Installation space needed (mm)	850	850	850	850	850	850
Weight, "standard" crane without stabilisers (kg)	3445	3475	3640	3670	3700	3865
Weight, stabilizer equipment (kg)	583	583	583	583	583	583

Hiab 255 K-3 HiPro



Disclaimer Hiab cranes have been built to meet the highest standards of safety and service life and have been thoroughly tested. Strength calculations for this model have been carried out in accordance with EN13001 in fatigue class S2. Cargotec's certified Quality Assurance System complies with ISO 9001. Some of the items in our literature may be extra equipment. Certain applications may require an official permit. We reserve the right to change technical specifications without prior notice. Hiab cranes produced for EU-countries are CE-marked and comply with the European Standard EN 12999.

Hiab is the world's leading provider of on-road load handling equipment. Our high performance product range includes loader cranes, forestry and recycling cranes, demountables, truck-mounted forklifts and tail lifts. We aim to set the industry benchmark for customer satisfaction by providing products and services that meet customer needs globally. www.hiab.com
Hiab is part of Cargotec. www.cargotec.com

