

# Hiab XS 055 CLX

## Capacity 36,200 ft-lbs

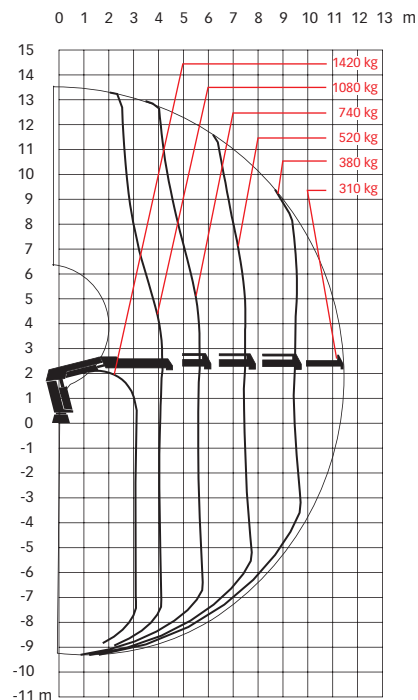
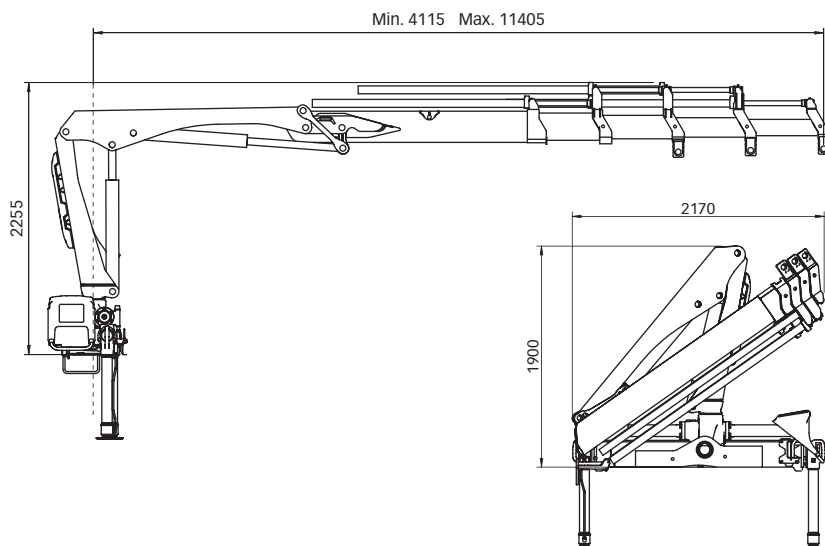


Basic data

# Hiab XS 055 CLX Basic data

Technical data	BS-1 CLX	BS-2 CLX	B-2 CLX	D-3 CLX	D-4 CLX
Max. lifting capacity (ft-lbs)	-	-	-	-	-
Outreach, hydraulic extensions	17' 5"	23' 11"	-	30' 6"	37' 1"
Outreach, manual extensions	29' 6"	29' 6"	30' 6"	37' 1"	-
Outreach / lifting capacity (ft / lbs)	6' 11" / 5 250	6' 11" / 4 890	8' 10" / 4 010	9' 6" / 3 570	10' 2" / 3 170
	11' 6" / 3 220	11' 10" / 2 950	12' 6" / 2 780	13' 1" / 2 600	13' 5" / 2 380
	16' 9" / 2 200	16' 9" / 2 030	17' 9" / 1 900	18' 1" / 1 810	18' 4" / 1 630
	-	22' 8" / 1 500	23' 7" / 1 410	23' 11" / 1 280	24' 3" / 1 150
	-	-	-	30' 6" / 990	30' 10" / 840
	-	-	-	-	37' 1" / 680
Slewing angle	410° - 410°	410° - 410°	410° - 410°	410° - 410°	410° - 410°
Height in folded position	75"	75"	75"	75"	75"
Width in folded position	82"	85"	85"	85"	85"
Installation space needed	22"	22"	22"	26"	26"
Weight, "standard" crane without stabilizers (lbs)	1,610	1,790	-	1,940	2,090

## Hiab XS 055 D-4 CLX



**Disclaimer.** Hiab cranes have been built to meet the highest standards of safety and service life and have been thoroughly tested. Strength calculations for this model have been carried out in accordance with EN13001 in fatigue class S1. Cargotec's certified Quality Assurance System complies with ISO 9001. Some of the items in our literature may be extra equipment. Certain applications may require an official permit. We reserve the right to change technical specifications without prior notice. Hiab cranes produced for EU-countries are CE-marked and comply with the European Standard EN 12999.

**Cargotec** improves the efficiency of cargo flows on land and at sea - wherever cargo is on the move. Cargotec's daughter brands - Hiab, Kalmar, and MacGregor - are recognized leaders in cargo and load handling solutions around the world. Cargotec's global network is positioned close to customers and offers a wide range of services that ensure the continuous, reliable, and sustainable performance of equipment. [www.cargotec.com](http://www.cargotec.com)