

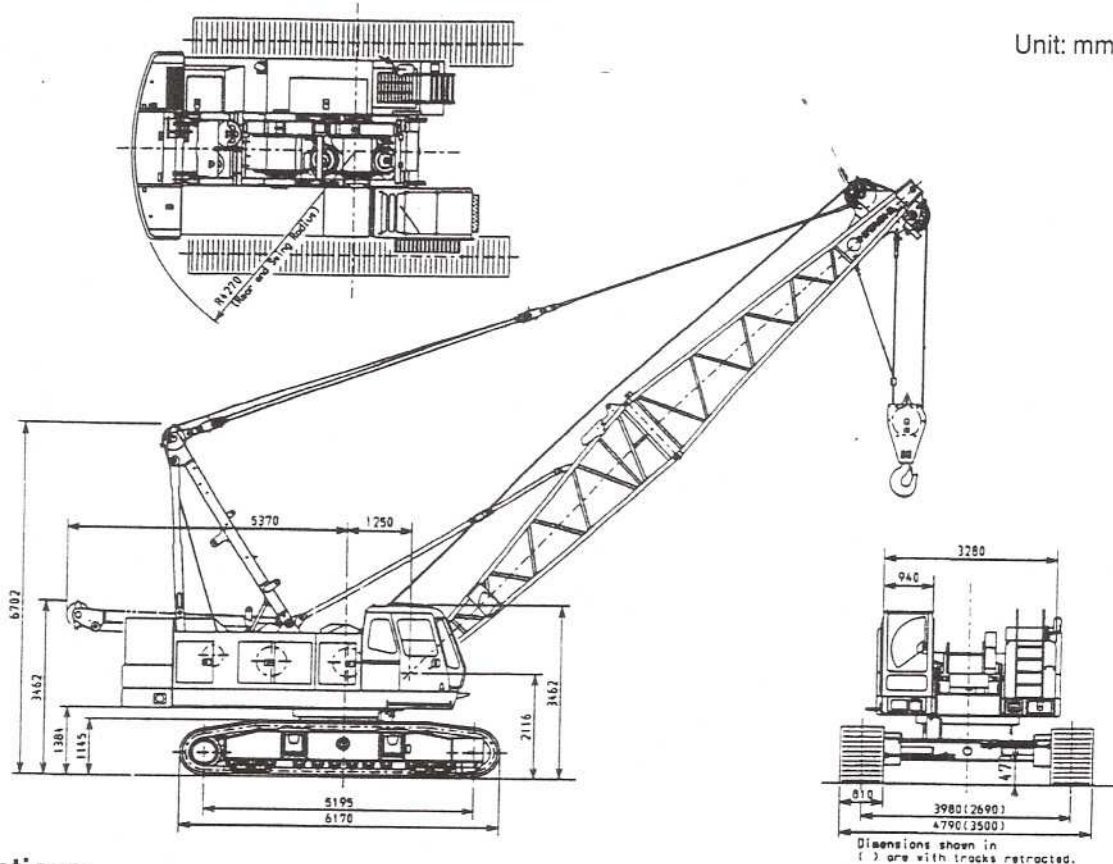
SPECIFICATIONS

PROVISIONAL
(TRACTOR SHOE TYPE)

HITACHI CX700HD HYDRAULIC CRAWLER CRANE

Max Lifting Capacity: 70 000kg

■ Dimensions



■ Specifications

Maximum rated load	ton x m	70 x 4.2
Basic boom length	m	13
Maximum boom length	m	55
Maximum line pull	ton	20
Main hoist drum	m/min	105*
Aux. hoist drum	m/min	105*
Boom hoist drum	m/min	55*
Swing speed	min ⁻¹ (rpm)	2.7 (2.7)
Travel speed	km/h	1.6 / 1.0*
Gradeability	% (degree)	40 (22)
Engine model		MITSUBISHI MOTORS 6D24-T
Rated power	kW/min ⁻¹ (PS/rpm)	184 / 2000 (250 / 2000)
Ground pressure	kPa (kgf/cm ²)	83.1 (0.85)
Operating weight	ton	75.6
(Equipped with 13 m boom and 70 ton capacity hook)		

NOTE: Data expressed above are in SI units (International System of Unit), followed by data in conventional units in parentheses.

*Data will vary with the load.

Portée (m)	Longueur de flèche (m)														
	13	16	19	22	25	28	31	34	37	40	43	46	49	52	55
4.0	70.00														
4.2	70.00	4.6m													
4.5	65.60	63.10	5.1m												
5.0	54.95	54.90	53.05	5.7m											
5.5	47.25	47.15	47.05	44.45	6.2m	6.7m									
6.0	41.35	41.25	41.15	41.10	39.00	34.65	7.3m	7.8m							
7.0	33.05	32.95	32.85	32.70	32.65	32.50	30.55	27.65	8.4m	8.9m					
8.0	27.40	27.30	27.20	27.10	27.00	26.85	26.80	26.65	24.75	22.75	9.5m				
9.0	23.35	23.25	23.10	23.00	22.90	22.80	22.70	22.60	22.45	22.40	20.70		10.6m	11.1m	11.7m
10.0	20.30	20.15	20.05	19.95	19.80	19.70	19.60	19.50	19.35	19.30	19.25	19.15	17.55	15.70	13.45
12.0	16.00	15.85	15.70	15.60	15.50	15.35	15.25	15.15	15.00	14.95	14.90	14.80	14.70	14.55	13.35
14.0	12.6m	13.00	12.85	12.70	12.60	12.45	12.35	12.25	12.10	12.05	12.00	11.85	11.75	11.60	11.45
16.0	15.05	15.2m	10.80	10.65	10.50	10.40	10.30	10.15	10.00	9.95	9.85	9.75	9.60	9.45	9.30
18.0		11.70	17.8m	9.10	8.95	8.85	8.70	8.55	8.40	8.35	8.25	8.10	8.00	7.85	7.70
20.0			9.4	7.90	7.75	7.60	7.45	7.30	7.15	7.10	7.00	6.85	6.75	6.55	6.45
22.0				20.4m	6.75	6.60	6.45	6.30	6.15	6.10	6.00	5.85	5.75	5.55	5.40
24.0				7.90	23.0m	5.80	5.65	5.50	5.30	5.25	5.20	5.05	4.90	4.75	4.60
26.0					6.35	25.6m	5.00	4.85	4.65	4.60	4.50	4.35	4.20	4.05	3.90
28.0						5.25	4.40	4.25	4.05	4.00	3.90	3.75	3.65	3.50	3.35
30.0							28.2m	3.80	3.60	3.55	3.40	3.25	3.15	3.00	2.85
32.0							4.35	30.8m	3.15	3.10	3.00	2.85	2.70	2.55	2.40
34.0								3.60	33.4m	2.75	2.60	2.45	2.35	2.20	2.00
36.0									2.90	2.45	2.30	2.15	2.00	1.85	1.65
38.0											2.00	1.85	1.70	1.50	37.5m
40.0											38.6m	1.60	1.45	38.7m	1.40
41.2											1.95	1.45	40.2m	1.40	
													1.40		

Crochet		Nombre de brins et charge maximale						
Capacité	Poids	7	6	5	4	3	2	1
70t	940kg	70.00	66.00	55.00	44.00	33.00	22.00	-
40t	620kg	-	-	-	40.00	33.00	22.00	-
22t	600kg	-	-	-	-	-	22.00	-
11t	370kg	-	-	-	-	-	-	11.00

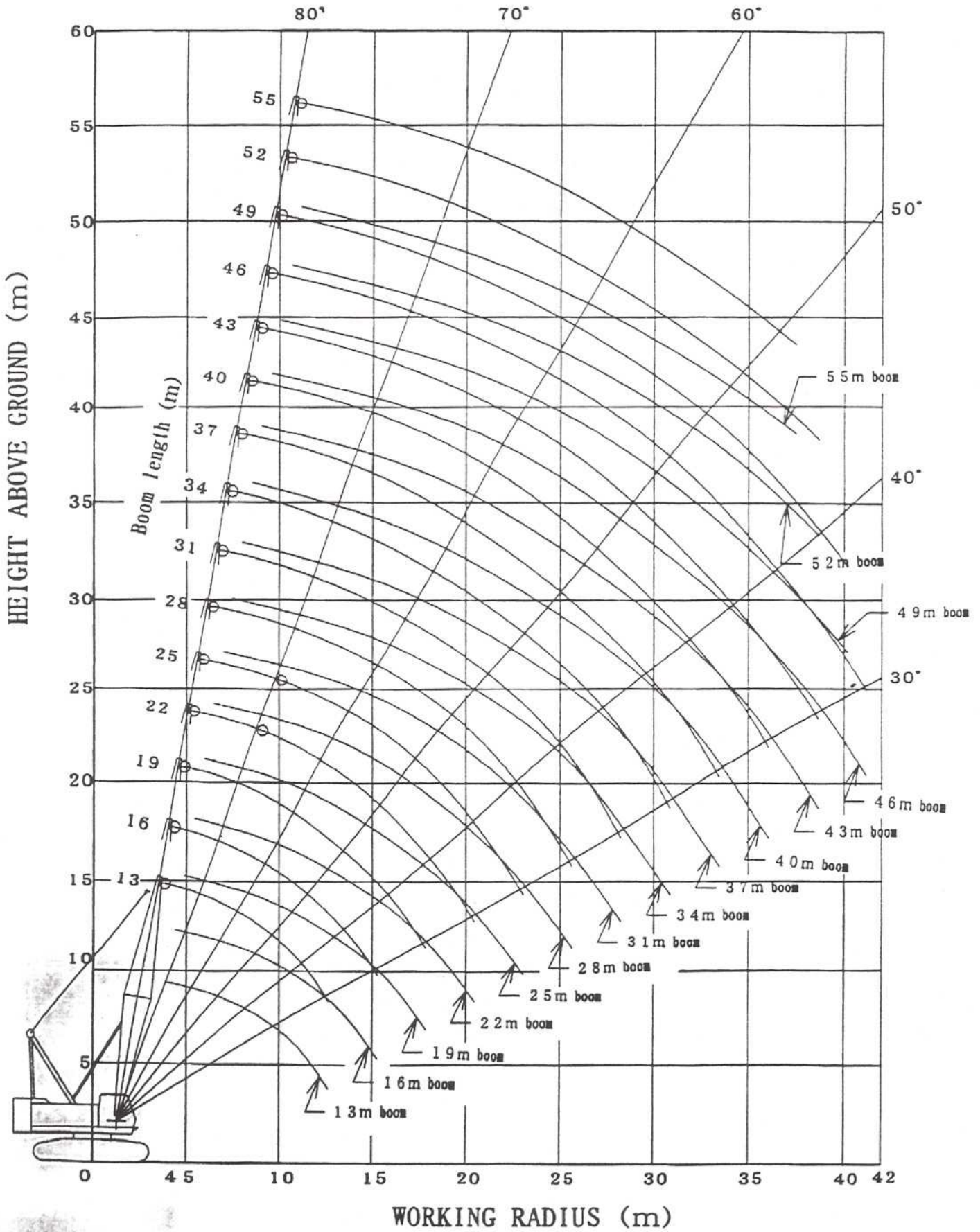
Pendant de utilisez
HL9 du limiteur de moment
 Numero d'indentification du
 limiteur de moment:
9196425

- Les charges ci-dessus sont conformes à la norme prEN13000 (Classe de levage H1, groupe de charge B2).
 Les charges sont définies avec une machine stationnée sur un sol ferme et de niveau.
 Elles sont données sur 360° et tiennent compte du poids des équipements tels que crochet avec élingues ou godet.
 A ce titre, il y a lieu de vérifier que le poids total de ces équipements n'exécède pas la charge maximale.
- Le contrepoids est de 24000 kg (en 3 parties).
- Les déplacements en charge sont autorisés sous réserve que:
 - * la flèche soit dans le sens du déplacement
 - * le dispositif de translation soit actionné en vitesse lente. le sol soit ferme
 - * la charge soit proche du sol et que les balancements soient évités au maximum
- Les opérations de levage doivent être faites avec les chenilles totalement écartées et bloquées.
- Les opérations de levage doivent être stoppées lorsque la vitesse du vent atteint 14 m/s. Lorsqu'elle atteint 17 m/s, la flèche doit être abaissée. La zone de manutention doit être au moins égale à 1.2 m² par tonne levée.

10.01.2001.

GRUE HITACHI CX 700-HD M^{le} F30010

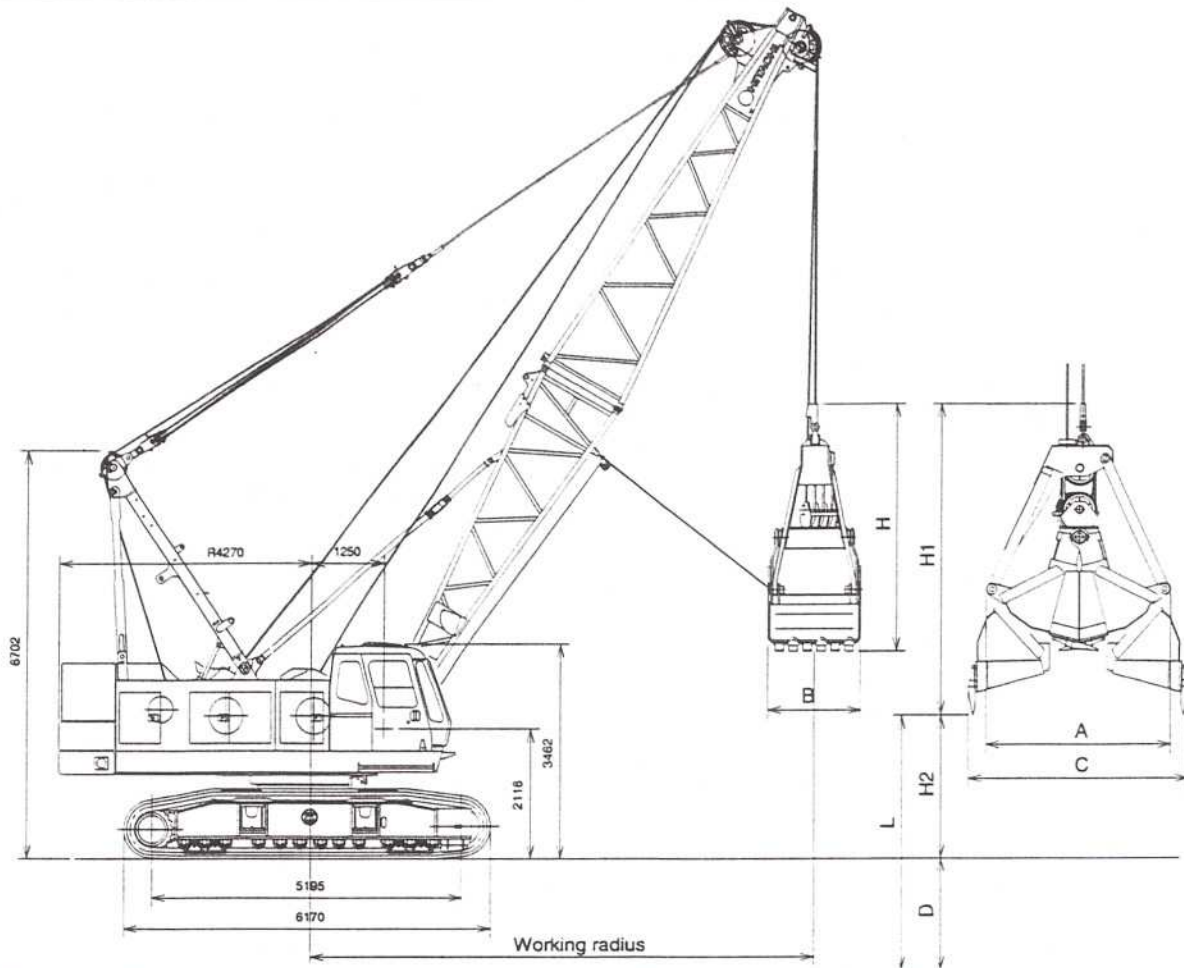
TABLEAU DE CHARGE affiché en cabine



CLAMSHELL

■ Dimensions

Unit: mm



■ Specifications

Bucket capacity	m ³	2.5	
Allowable clamshell gross weight	ton	10.0	
Boom length	m	13-22	
Maximum digging depth	m	36	
Line speed			
Suspend line	m/min	105/60/30	Rope 26mm dia.
Open/close line	m/min	105/60/30	
Boom hoist line	m/min	55	Rope 20mm dia.
Ground pressure	kPa (kg/cm ²)	88.1 (0.90)	
Operating weight	ton	80.2 (13m boom + 2.5m ³ bucket)	

■ Clamshell Bucket

Capacity (m ³)	Weight (ton)	A	B	C	H	H1
2.5	5.5	2,880	1,400	3,450	4,180	5,130

Notes 1.Data is expressed in SI units, along with conventional units in ().

2.Other specifications, not shown, are similar to those for the crawler crane.

3.Line speeds marked with an asterisk(*) will vary with the load.

■ Specifications

Boom length	m	13				16				19				22			
Boom angle	degree	35	45	55	65	35	45	55	65	35	45	55	65	35	45	55	65
Working radius	m	12.4	11.0	9.3	7.3	14.8	13.1	11.0	8.6	17.3	15.2	12.7	9.9	19.8	17.3	14.4	11.1
Rated load	ton	10	10	10	10	10	10	10	10	10	10	10	10	7.9	10	10	10
Lift L=D+H2	m	38.3	40.1	41.6	42.5	40.1	42.2	44.1	45.5	41.8	44.4	46.5	48.2	43.5	46.5	49.0	51.0
Max. digging depth D	m	36															
Dumping height H2	m	2.3	4.1	5.6	6.5	4.1	6.2	8.1	9.5	5.8	8.4	10.5	12.2	7.5	10.5	13.0	15.0

Notes 1.Rated loads for clamshell do not exceed 90% those for crane.

2.The rated loads shown are upper limits determined by the following equation. Please select a bucket in such a manner that its rated load does not exceed the rated load shown above, according to kinds of the loads handled.

Rated load = Bucket capacity(m³) x Specific gravity of load(ton/m³) + Bucket weight(ton)

Be careful that brake will be overheated if the bucket is too heavy even within the rated loads.

3.Working radius is the horizontal distance from the swing center to the center of gravity of lifted load.

4.The bucket weight is 5.5 ton maximum.

5.The counterweight is 24.1 ton.

6.Be sure to fully extended the side frames before operating the machine.

7.Free fall using brake will vary with operating conditions such as bucket weight and work cycle, but its height should be within 10m.

Crane Boom Construction

Boom length (m)	13	16	19	22	25	28	31	34	37	40	43	46	49	52	55
Lower boom 6.5m	1	1	1	1	1	1	1	1	1	1	1	1	1	1	1
Upper boom 6.5m	1	1	1	1	1	1	1	1	1	1	1	1	1	1	1
3m boom insert		1	2	1	2	1	1	2	1	1	2	1	2	2	1
6m boom insert				1	1	2	1	1	2	1	1	2	2	1	2
9m boom insert							1	1	1	2	2	2	2	3	3
Available aux. jib	○	○	○	○	○	○	○	○	○	○	○	○	○	×	×

Note : 6m boom insert can be replaced with two 3m boom inserts, and 9m boom insert with a combination of 3m and 6m boom inserts.

Standard Equipment

BASIC MACHINE

Undercarriage

- Crawler-type undercarriage (with 810 mm shoes)

Upperstructure

- Front lights (2 pcs)
- Rearview mirrors (left and right)
- Boom hoist drum check mirror
- Centerized lubrication system (for gantry and swing circle)
- Electric refuel device
- Ladder (right)
- Undercover (at upperstructure bottom)
- Cab climbing step
- Ultra slow speed controller
- Slow boom hoisting stop
- Constant swing speed controller
- 20 ton winch
- Gantry hoist cylinders
- 24.1ton counterweight
- Standard tool kit

Cab

- Intermittent wipers (front and roof windows)
- Washers (front and roof windows)
- Rolled sunshade (roof window)
- Sunvisor
- Air conditioner
- Floor mat
- Room light
- Auto-tuning clock radio (AM/FM)
- Cigarette lighter
- Ashtray
- Brake mode selector switch (interlocked)
- Joy-stick type operating levers

Safety Devices

- Swing lock
- Drum pawl lock (main/aux. and boom hoist drum)
- Swing alarm (buzzer and lamp)
- Fail safe brake system
- Pilot control shut-of lever
- Before-work check monitor

FRONT ATTACHMENTS

Crane

- 13m basic boom (6.5m + 6.5m)
- Boom stop
- Boom angle indicator
- 70ton hook
- Main hoist rope ($\phi 26\text{mm}$)
- Boom hoist rope ($\phi 20\text{mm}$)
- Moment limiter
- Overhoist prevention device (main hook, boom hoist, secondary)

Clamshell

- 13m basic boom (6.5m + 6.5m)
- Boom stop
- Boom angle indicator
- Open/close and suspend rope disengagement prevention device (for tubular chord boom)
- Open/close rope ($\phi 26\text{m}$)
- Suspend rope ($\phi 26\text{m}$)
- Boom hoist rope ($\phi 20\text{mm}$ x 170m)
- Hydraulic tagline ($\phi 10\text{mm}$ x 55m rope included)

These specifications are subject to change without notice. Illustrations show the standard models, and may or may not include optional equipment, accessories, and all standard equipment

Hitachi Construction Machinery Co., Ltd.

Head Office: Nippon Bldg., 6-2, 2-chome, Ohtemachi,

Chiyoda-ku, Tokyo 100-0004, Japan

Telephone: Tokyo (03) 3245-6390

Facsimile: Tokyo (03) 3246-2609

Printed in Japan

Courtesy of Crane.Market