

# 1560



- **Sturdy grab loader**
- **High working speed**
  - great advantage for grab work
- **Optimized for working with up to a 700-l clamshell bucket**







# HMF 1560 Series

- a New, Sturdy Grab Loader from HMF



◀ The HMF 1560 is available with a wide range of optional extras such as extra valves. In this picture, the loader is equipped with 1 extra valve for working with rotator.



▲ ▶ As a part of HMF's wide range of optional extras for the HMF 1560, you can choose to equip the loader



with radio remote control. This offers you a safe view in situations, where it is not possible to place the truck close to the working area. The HMF 1560 Series is available with up to 4 hydraulic extensions giving a hydraulic reach of 12.7 metres with a lifting capacity of 940 kg. The HMF 1563-K3 in the picture has 3 hydraulic extensions with a reach of 10.5 metres and at this reach, the 1560 Series easily handles loads of 1,260 kg.



◀ HMF's control valves are well-known for their safe, smooth, precise, and user-friendly operation. The HMF 1560 Series is delivered within the EU as

standard with HMF's popular safety system RCL, reducing the risk of overload situations that lead to unnecessary wear and tear.

▶ The HMF 1560 Series is designed so that you obtain an increased hook height close to the column. In this way you can position the goods close to the front edge of the truck body and thereby obtain an optimal utilisation of the truck body. The HMF 1563-K3 has a hook height of 2.41 metres at a distance of 1 meter from the loader column.

The HMF 1560 Series is a sturdy working tool classified in loading group B3 – especially developed for grab work. The loader has an excellent power-to-weight ratio. The demand for increased working speed means that the loader is fitted with a re-generation system on the extension cylinders as standard in all boom versions, which offers unparalleled working speed. This means that the jib extension system with 4 hydraulic extensions is extended to 12.7 metres in only 19 seconds. The recently designed extension cylinders are led in sturdy welded guide rails.

## The HMF 1560 Series – the Loader with many Advantages

The slewing system fitted on the 1560 is designed for larger loaders, thus ensuring a powerful slewing torque. The HMF 1560 Series is available in 4 different versions with up to 4 hydraulic extensions with a maximum hydraulic reach of almost 13 metres. With manual extensions, the out-reach is increased to more than 17 metres. In the K2 version the loader has been developed for working with a 700-l clamshell bucket. Furthermore the HMF 1560 can be delivered with stand-up controls increasing the operator's view when working with grab.

## HMF's Popular Safety System – RCL 5100

Like all new loaders from HMF, the 1560 Series is equipped with HMF's user-friendly safety system RCL 5100. This simple and flexible system has become popular because it helps you limit operating and repair costs. The controller constantly monitors the load moment and operation of the loader, thus avoiding overload situations that lead to unnecessary wear and tear. The RCL 5100 is designed to enable you to operate the loader without overload situations occurring. The fewer times the loader is working over 100% capacity, the less wear and tear and the longer life span! (The RCL System is an optional extra in countries outside the EU).



## Flexibility

The considerable range of accessories offers you the possibility of making the HMF 1560 a versatile lifting tool. The HMF 1560 Series is designed for operation in loading group B3 and hydraulic accessories can be used without reducing the lifting capacity.

The design of the jib extension system ensures a high lifting height of 2.5 metres in the area close to the column.

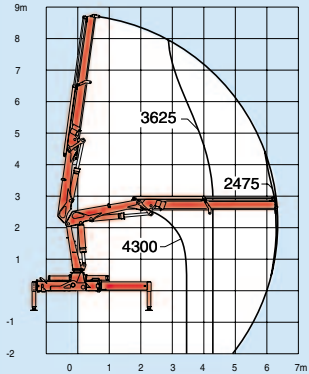


# Technical Data, HMF 1560 Series

Loading group B3		1563-K1	1563-K2	1563-K3	1563-K4
Load moment	tmt	15,6	15,0	14,5	14,1
Hydraulic reach	m	6,3	8,5	10,6	12,7
Slewing torque	kgm	2400	2400	2400	2400
Slewing angle	°	410	410	410	410
Height above chassis	mm	2217	2217	2217	2217
Width, folded	mm	2500	2500	2500	2500
Length of base, no extra valves	mm	830	830	830	830
Length of base with extra valves	mm	945	945	945	945
Std. Stabilizer spread, standard	mm	4200	5100	5100	5100
Stabilizer spread, double ext.	mm	6430	6430	6430	6430
Weight excl. stabilizers	kg	1560	1735	1885	2010
Weight of stabilizers, std.	kg	200	250	250	250
Working pressure	MPa	28	28	28	28
Pump performance	l/min	50	50	50	50
Oil capacity in base	l	20	20	20	20
Oil tank capacity (seperate tank)	l	85	85	85	85
Power consumption	kW	24	24	24	24
Hook height 1 m from column	m	2,48	2,44	2,41	2,37

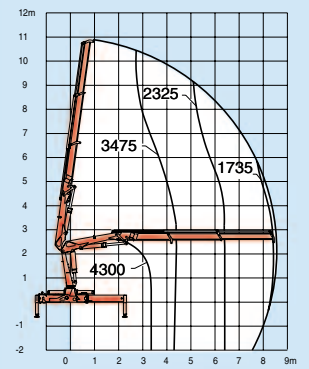
## 1563-K1 B3

values stated in kg



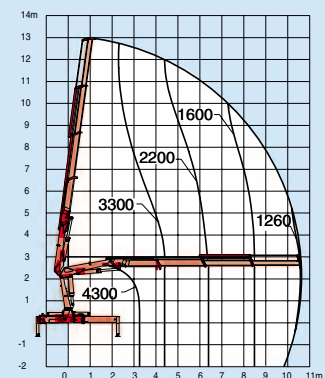
## 1563-K2 B3

values stated in kg



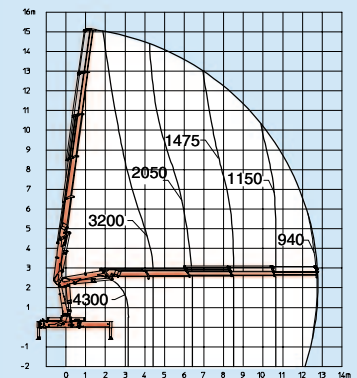
## 1563-K3 B3

values stated in kg

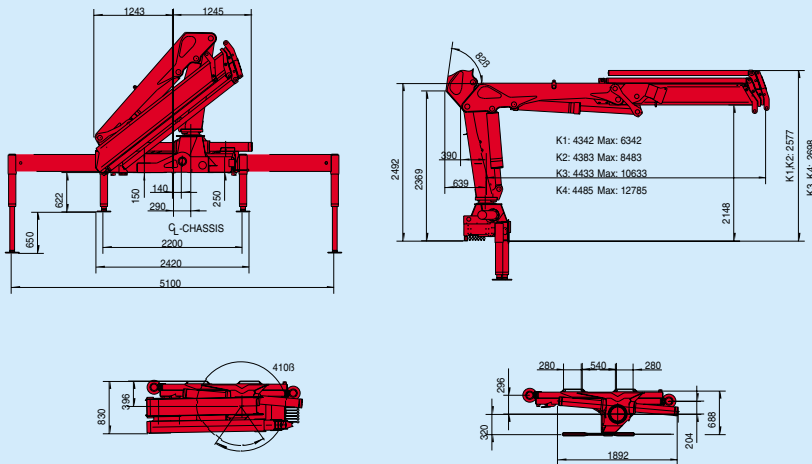


## 1563-K4 B3

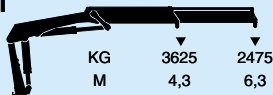
values stated in kg



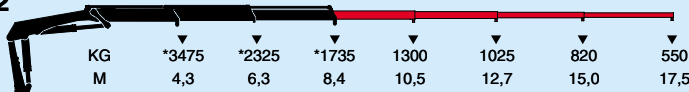
## Dimension Sketch



### 1563-K1

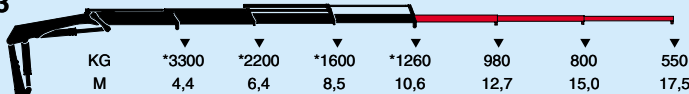


### 1563-K2



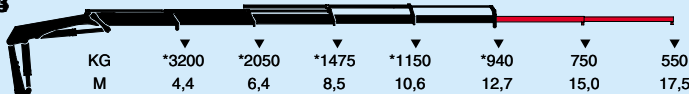
\* Lifting capacity, no manual extensions

### 1563-K3



\* Lifting capacity, no manual extensions

### 1563-K4



\* Lifting capacity, no manual extensions





◀ *HMF-loaders are developed with great importance attached to reduced chassis space requirements, in order to obtain as much space as possible for the body building. The HMF 1560 Series without extra valves thus has a chassis space requirement of only 830 mm.*

### **HMF: A Reliable Partner**

HMF is amongst the world's leading manufacturers of transport hydraulics and equipment. With a total floor area of more than 70,000 square metres and over 50 years of experience, HMF is able to handle the largest projects.

HMF products are marketed, sold, and serviced by an extensive network of subsidiaries, dealers, and agents in more than 50 countries around the world.

HMF makes heavy demands on the manufacturing process and all HMF loaders are subjected to a rigorous test programme. On top of that, a well-assorted spare parts stock ensures a speedy delivery of spare parts.

### **The Highest Quality**

HMF is the first truck loader manufacturer in the world to have obtained certification in accordance with the international ISO-9000 standard.



The HMF Quality Management System is designed to ensure a uniform standard in all HMF products and is subject to control from the certifying organization, Lloyd's

Register Ltd. thus ensuring that all HMF products comply with the strict quality requirements laid down by HMF.

We reserve the right to introduce improvements and modifications.

