



**CONSTRUCT ENGINEERING**

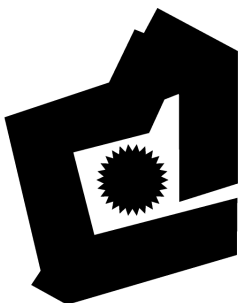
A division of Westfield Nominees

# Humma UV25-25

## DATASHEET



### Features



- **No movable counterweight**
- **Adjustable airbag suspension system — smooth ride, reduced wear & maintenance**
- **Vibration-isolated cabin — large and comfortable for two people**
- **Fully powered boom to 20.5m**

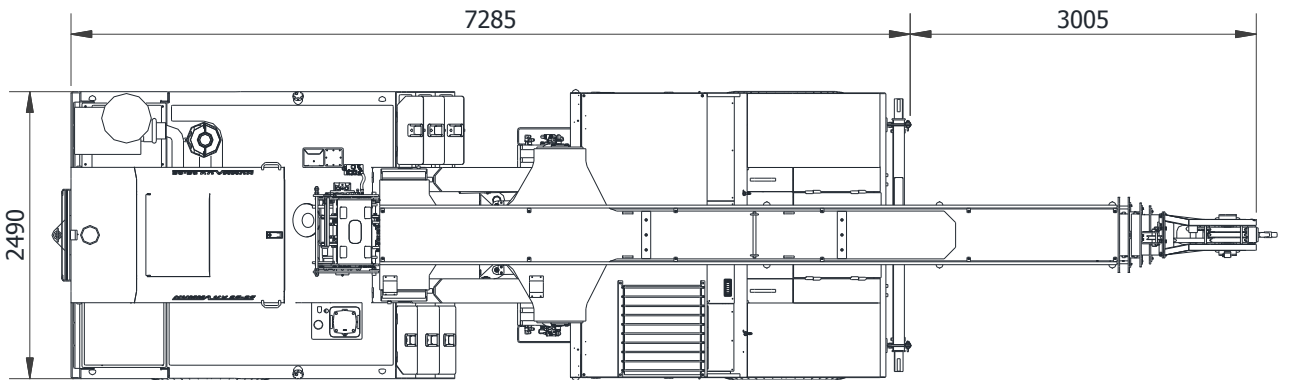
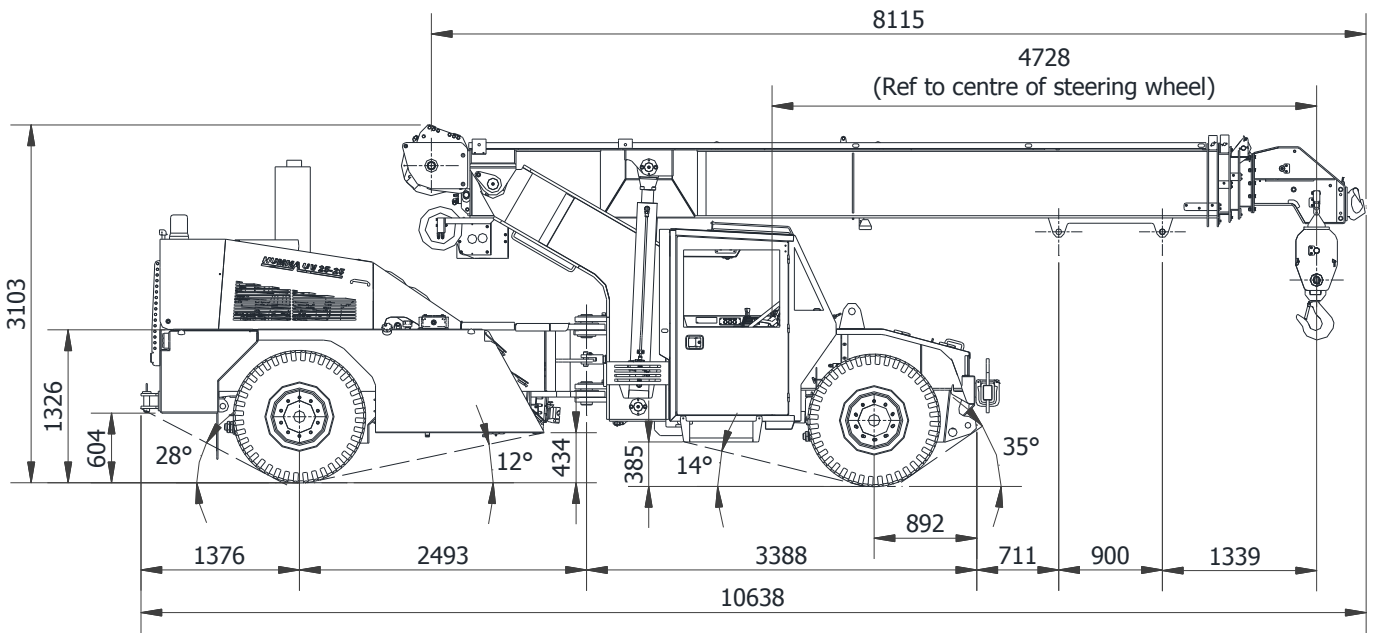
Made in Western Australia

---

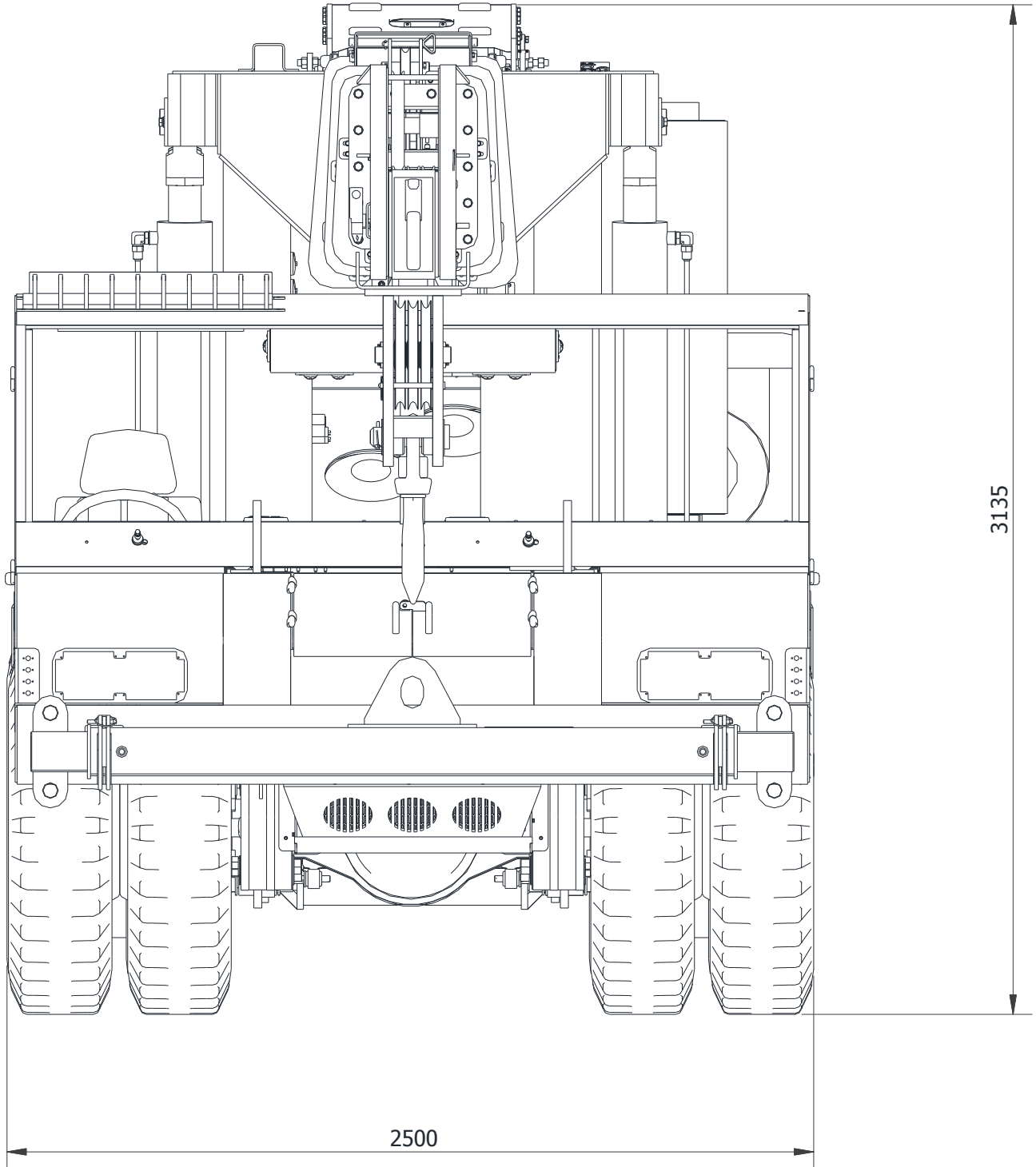
## CONTENTS

Crane Dimensions .....	3-4
Radius Load Chart .....	5
Area of Operation .....	6
Technical Description.....	7-8
Load charts.....	9-13
Licensing & Disclaimer.....	14

# DIMENSIONS

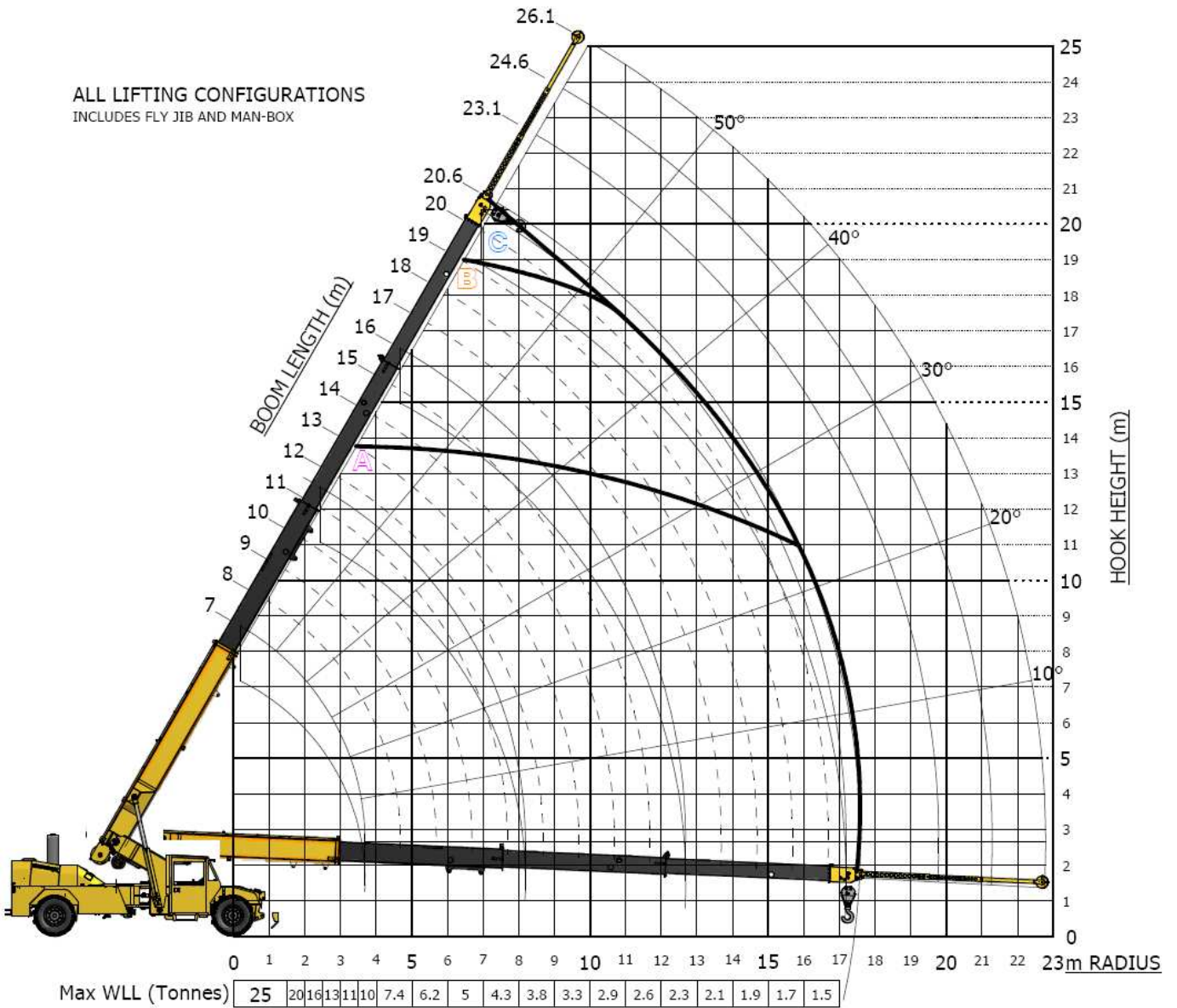


## DIMENSIONS

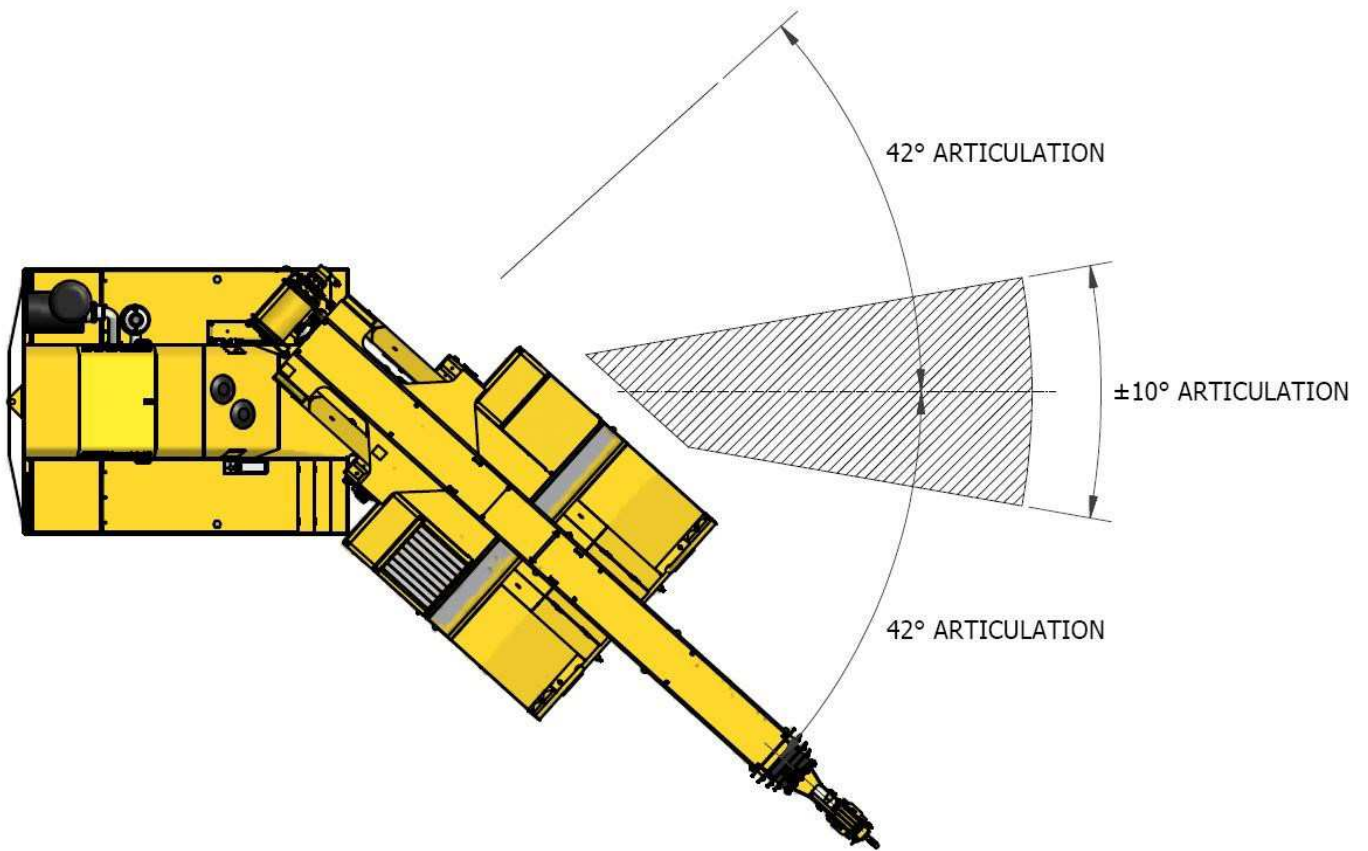


# RADIUS LOAD CHART

ALL LIFTING CONFIGURATIONS  
INCLUDES FLY JIB AND MAN-BOX



## AREA OF OPERATION



## TECHNICAL DESCRIPTION



**Maximum Speed: 90 km/h**



**Maximum Lifting Capacity: 25t**



**Common Voltage: 12V**



**Transmission: Allison 3000SP**

- Fully automatic 6-speed
- TC417 Converter



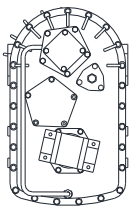
**Engine: Cummins ISC285**

- Power: 213kW
- Torque: 1085Nm
- Exhaust brake
- ADR 80/02 compliant



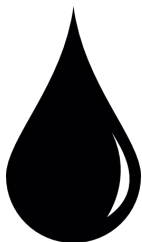
**Axles: Kessler D71PL477**

- Wedge brake operation
- Rear axle differential lock
- Front wheel holding brake



**Transfer Case: ZF VG750**

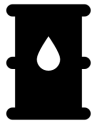
- 2/4WD
- Hi/Lo Air Shifted
- 2:1 ratio Low, 1:1 ratio High



**Hydraulics**

- Crane Functions Pump: 335L/min
- Steering Pump: 87L/min
- Electric emergency steering pump

## TECHNICAL DESCRIPTION



**Hydraulic tank: 436L**

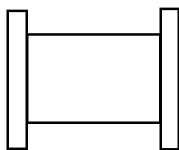


**Fuel tank: 391L**



**Hook block**

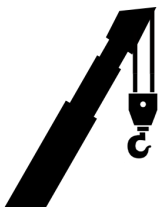
- 25T maximum rated capacity
- 2, 4 or 6 fall interchangeable options



**Winch: Bosch Rexroth GFT 17 T3**

- 4.2t Linepull
- Digital rope compensation
- 2-Speed Operation (Hi/Lo)

**Wire rope: Ø16mm Non-Rotating RHOL**



**Four-section boom**

- Maximum hook height: 19m
- Boom elevation range: -3° to 60°



**Machinery Hook: Custom-made Rhino hook**

- Maximum load: 20t



# LOAD CHARTS

## RATED CAPACITY CHART 201, 202 RATED CAPACITIES ON MAIN WINCH ROPE (Kilograms) ±10°, ±42° ARTICULATION

CAPACITIES ON SHEAVE HOOK IN KILOGRAMS														201 LMI CHART 10 DEG ARTICULATION		202 LMI CHART 42 DEG ARTICULATION	
RAD	BOOM LENGTH																
	7.143	8	9	10	11	12	13	14	15	16	17	18	19	20	20.6		
1.4	24934	23534	22185														
	24934	23534	22185														
2	49	54	58														
	20795	21238	20046	18938													
3	18426	18272	18130	18016													
	42	48	54	58													
4	13453	13331	13218	13128	13054	12993											
	11874	11752	11639	11549	11475	10261											
5	28	38	45	51	55	58											
	10259	9676	9578	9500	9436	9382	9337	9298									
6	9023	8492	8394	8315	8251	8198	8152	8114									
	3.83	24	36	43	48	52	56	59									
7		8061	7394	7323	7264	7216	7175	7139	7109	7082							
		7051	6447	6375	6317	6315	6412	6496	6568	6632							
8		4.69	23	34	41	46	50	54	56	59							
			6333	5871	5817	5815	5906	5984	6052	6111	6163	5788					
9			5501	5082	5027	5025	5116	5194	5262	5321	5374	5420					
			5.69	21	32	39	44	48	52	54	57	59					
10				5122	4783	4781	4868	4942	5006	5062	5112	5156	4806	4441			
				4414	4106	4104	4191	4265	4329	4385	4435	4479	4518	4441			
11				6.69	20	31	38	43	47	50	53	55	57	59			
					4226	4006	4089	4160	4222	4276	4323	4365	4407	4070	3888		
12					3610	3414	3497	3568	3629	3683	3731	3773	3811	3845	3888		
					7.69	20	30	36	41	45	48	51	53	56	57		
13						3574	3483	3552	3612	3664	3710	3751	3787	3753	3585		
						3029	2957	3025	3085	3137	3183	3224	3261	3294	3313		
14						8.69	19	28	35	40	44	47	50	52	53		
							3138	3065	3123	3174	3219	3341	3295	3327	3322		
15							2649	2592	2650	2700	2745	2785	2821	2853	2872		
							9.69	18	27	34	38	42	46	48	50		
16								2782	2724	2774	2818	2857	2891	2923	2941		
								2339	2293	2343	2387	2426	2461	2492	2511		
17								10.69	17	27	33	37	41	44	46		
									2488	2440	2483	2521	2555	2586	2604		
18									2083	2045	2088	2126	2161	2191	2209		
									11.69	17	26	32	36	40	42		
19										2240	2200	2238	2271	2301	2319		
										1867	1835	1873	1907	1937	1955		
20										12.69	16	25	31	35	38		
											2028	1994	2027	2057	2075		
21											1682	1656	1689	1719	1736		
											13.69	16	24	30	33		
22												1846	1816	1846	1863		
												1523	1500	1530	1547		
23													14.69	15	24	28	
														1686	1661	1678	
24														1384	1364	1382	
														15.69	15	21	
25															1546	1514	
															1262	1236	
26															16.69	10	
																1464	
27																1190	
																0	

### NOTES

- Designed to meet ASI418.1, ASI418.5 and AS3990.
- Area enclosed by the red double line denotes structural limitations — all other rated capacities do not exceed 66.7% of tipping loads.
- Lift and carry on firm level ground (<1° side slope). Load must be carried on the shortest possible boom and close to the ground. Maximum crane speed when loaded = 3 km/hr.
- Weight of slings to be added to load.
- Lifting and mobilizing load must be done with air bags dumped.
- TYRES: FRONT = 1200x20x20ply inflated to 828 kPa (120psi); REAR = 1200x20x20ply inflated to 690 kPa (100psi).

### LIFTING ACCESSORIES WEIGHTS

These weights only apply to standard equipment supplied by CONSTRUCT ENGINEERING.

- 6 Fall hook block = 166 kg
- 6 Fall hook block hook = 28 kg
- Single hook block = 42
- Single hook block hook = 2 kg
- Install unused fly-jib = 150 kg

### WINCH LOAD CHART

Rope Falls	Winch Load (Kg)
1	4 200
2	8 400
4	16 800
6	25 200

# LOAD CHARTS

## RATED CAPACITY CHART 203, 204 RATED CAPACITIES ON SLIDING HOOK I (Kilograms) ±10°, ±42° ARTICULATION

CAPACITIES ON SLIDING HOOK I IN KILOGRAMS		203 LMI CHART 10 DEG ARTICULATION								
		204 LMI CHART 42 DEG ARTICULATION								
RADIUS	BOOM LENGTH									
	4.91	5.5	6	6.5	7	7.5	8	8.5	9	9.41
1.4	25000	25000	25000	25000	24096	23270	22553	21921		
	25000	25000	25000	25000	24096	23270	22553	21921		
2	22	36	42	47	51	54	57	59		
	23946	19443	19516	19556	19584	19604	19619	19758	19259	18887
	21609	17074	17147	17187	17215	17235	17250	17263	17273	17280
2.5	1.64	20	32	39	44	48	51	54	57	58
		17475	15194	15252	15284	15306	15322	15335	15345	15352
		15313	13299	13356	13388	13410	13427	13440	13450	13457
3		2.19	19	31	37	43	47	50	53	54
			13899	12363	12409	12436	12454	12468	12479	12486
			12138	10783	10830	10856	10875	10889	10899	10907
3.5			2.69	18	29	36	41	45	48	50
				11444	10341	10380	10402	10418	10430	10437
				9959	8987	9026	9048	9064	9076	9084
4				3.19	17	28	35	40	44	46
					9653	8824	8858	8877	8891	8899
					8370	7640	7673	7692	7706	7715
4.5					3.69	17	27	34	38	42
						8290	7645	7674	7691	7701
						7160	6592	6621	6638	6648
5						4.19	16	26	33	37
							7218	6702	6727	6740
							6208	5754	5780	5793
5.5							4.69	15	25	31
								6352	5930	5950
								5439	5069	5089
6								5.19	15	23
									5638	5281
									4806	4491
6.1									5.69	11
										5140
										4364
										6.10

### NOTES

1. Designed to meet ASI418.1, ASI418.5 and AS3990.
2. Area enclosed by the red double line denotes structural limitations — all other rated capacities do not exceed 66.7% of tipping loads.
3. Lift and carry on firm level ground (<1° side slope). Load must be carried on the shortest possible boom and close to the ground. Maximum crane speed when loaded = 3 km/hr.
4. Weight of slings to be added to load.
5. Lifting and mobilizing load must be done with air bags dumped.
6. TYRES: FRONT = 1200x20x20ply inflated to 828 kPa (120psi); REAR = 1200x20x20ply inflated to 690 kPa (100psi).

### LIFTING ACCESSORIES WEIGHTS

These weights only apply to standard equipment supplied by CONSTRUCT ENGINEERING.

- 6 Fall hook block = 166 kg
- 6 Fall hook block hook = 28 kg
- Single hook block = 42
- Single hook block hook = 2 kg
- Install unused fly-jib = 150 kg

### WINCH LOAD CHART

Rope Falls	Winch Load (Kg)
1	4 200
2	8 400
4	16 800
6	25 200

# LOAD CHARTS

## RATED CAPACITY CHART 205, 206 RATED CAPACITIES ON SLIDING HOOK 2 (Kilograms) ±10°, ±42° ARTICULATION

CAPACITIES ON SLIDING HOOK 2 IN KILOGRAMS							205 LMI CHART 10 DEG ARTICULATION					
							206 LMI CHART 42 DEG ARTICULATION					
RADIUS	BOOM LENGTH											
	5.81	6	6.5	7	7.5	8	8.5	9	9.5	10	10.31	
1.4	25000	25000	25000	24096	23270	22553	21921					
	25000	25000	25000	24096	23270	22553	21921					
2	40	42	47	51	54	57	59					
	20196	20192	20175	20155	20135	20116	19758	19259	18811			
2.5	17827	17823	17806	17786	17766	17747	17729	17712	17697			
	28	32	39	44	48	51	54	57	59			
3	15727	15797	15801	15790	15776	15761	15747	15733	15721	15709	15702	
	13833	13902	13906	13895	13880	13866	13852	13838	13825	13813	13806	
3.5	2.50	19	31	37	43	47	50	53	55	57	58	
		14492	12868	12873	12865	12855	12844	12833	12822	12812	12964	
4		12731	11289	11293	11286	11276	11265	11254	11243	11233	11384	
		2.69	18	29	36	41	45	48	51	53	55	
4.5			11943	10776	10781	10776	10768	10760	10751	10742	10884	
			10458	9422	9427	9422	9415	9406	9397	9389	9530	
5			3.19	17	28	35	40	44	47	50	51	
				10085	9206	9212	9209	9203	9196	9189	9323	
5.5				8802	8022	8028	8024	8018	8011	8004	8139	
				3.69	17	27	34	38	42	45	47	
6					8671	7986	7992	7990	7985	7979	8108	
					7540	6933	6939	6937	6932	6926	7055	
6.5					4.19	16	26	33	37	41	43	
						7558	7010	7016	7014	7010	7135	
7						6548	6062	6068	6066	6063	6187	
						4.69	15	25	32	36	39	
7.5							6659	6211	6217	6216	6338	
							5746	5349	5355	5354	5476	
UNDER LINED VALUES INDICATE RADIUS AT 0 DEG							5.19	15	25	31	34	
8								5918	5545	5551	5671	
								5086	4755	4761	4881	
8.5								5.69	14	24	28	
									5297	4982	5104	
9									4532	4253	4375	
									6.19	14	20	
9.5										4769	4596	
										4061	3919	
10										6.69	0	

### NOTES

1. Designed to meet ASI418.1, ASI418.5 and AS3990.
2. Area enclosed by the red double line denotes structural limitations — all other rated capacities do not exceed 66.7% of tipping loads.
3. Lift and carry on firm level ground (<1° side slope). Load must be carried on the shortest possible boom and close to the ground. Maximum crane speed when loaded = 3 km/hr.
4. Weight of slings to be added to load.
5. Lifting and mobilizing load must be done with air bags dumped.
6. TYRES: FRONT = 1200x20x20ply inflated to 828 kPa (120psi); REAR = 1200x20x20ply inflated to 690 kPa (100psi).

### LIFTING ACCESSORIES WEIGHTS

These weights only apply to standard equipment supplied by CONSTRUCT ENGINEERING.

- 6 Fall hook block = 166 kg
- 6 Fall hook block hook = 28 kg
- Single hook block = 42
- Single hook block hook = 2 kg
- Install unused fly-jib = 150 kg

### WINCH LOAD CHART

Rope Falls	Winch Load (Kg)
1	4 200
2	8 400
4	16 800
6	25 200



# LOAD CHARTS

## RATED CAPACITY CHART 207, 208 RATED CAPACITIES ON RHINO HOOK (Kilograms) ±10°, ±42° ARTICULATION

CAPACITIES ON RHINO HOOK IN KILOGRAMS															207 LMI CHART 10 DEG ARTICULATION	
															208 LMI CHART 42 DEG ARTICULATION	
RAD	BOOM LENGTH															
	7.489	8	9	10	11	12	13	14	15	16	17	18	19	20	21	
1.4	20000	20000	20000													
	20000	20000	20000													
2	51	54	58													
	20000	20000	20000	18938												
3	18577	18776	19100	18938												
	45	48	54	58												
4	13573	13492	13362	13257	13171	13052										
	11993	11913	11782	11678	11592	11472										
5	33	38	45	51	55	58										
	9410	9816	9703	9612	9537	9433	9541	9633								
6	8276	8632	8518	8427	8353	8249	8356	8448								
	4.18	24	36	43	48	52	56	59								
7		8192	7507	7425	7357	7262	7360	7443	7516	7579						
		7182	6560	6477	6409	6315	6412	6496	6568	6632						
8		4.62	23	34	41	46	50	54	56	59						
			6441	5967	5903	5815	5906	5984	6052	6111	6163	5788				
9			5609	5177	5114	5025	5116	5194	5262	5321	5374	5420				
			5.62	21	32	39	44	48	52	54	57	59				
10				5214	4865	4781	4868	4942	5006	5062	5112	5156	4806	4441		
				4506	4188	4104	4191	4265	4329	4385	4435	4479	4518	4441		
11				6.62	20	31	38	43	47	50	53	55	57	59		
					4305	4006	4089	4160	4222	4276	4323	4365	4407	4070	3801	
12					3689	3414	3497	3568	3629	3683	3731	3773	3811	3845	3801	
					7.62	20	30	36	41	45	48	51	53	56	57	
13						3574	3483	3552	3612	3664	3710	3751	3787	3753	3503	
						3029	2957	3025	3085	3137	3183	3224	3261	3294	3323	
14						8.62	19	28	35	40	44	47	50	52	54	
							3138	3065	3123	3174	3219	3259	3295	3327	3246	
15							2649	2592	2650	2700	2745	2785	2821	2853	2882	
							9.62	18	27	34	38	42	46	48	51	
16								2782	2724	2774	2818	2857	2891	2923	3021	
								2339	2293	2343	2387	2426	2461	2492	2520	
17								10.62	17	27	33	37	41	44	47	
									2488	2440	2483	2521	2555	2586	2614	
18									2083	2045	2088	2126	2161	2191	2219	
									11.62	17	26	32	36	40	43	
19										2240	2200	2238	2271	2301	2328	
										1867	1835	1873	1907	1937	1964	
20										12.62	16	25	31	35	39	
											2028	1994	2027	2057	2084	
21											1682	1656	1689	1719	1745	
											13.62	16	24	30	34	
22												1846	1816	1846	1872	
												1523	1500	1530	1556	
23												14.62	15	24	29	
													1686	1661	1687	
24													1384	1364	1390	
													15.62	15	23	
25														1546	1523	
														1262	1244	
26														16.62	15	
															1422	
17.7															1154	
																0

### NOTES

- Designed to meet ASI418.1, ASI418.5 and AS3990.
- Area enclosed by the red double line denotes structural limitations — all other rated capacities do not exceed 66.7% of tipping loads.
- Lift and carry on firm level ground (<1° side slope). Load must be carried on the shortest possible boom and close to the ground. Maximum crane speed when loaded = 3 km/hr.
- Weight of slings to be added to load.
- Lifting and mobilizing load must be done with air bags dumped.
- TYRES: FRONT = 1200x20x20ply inflated to 828 kPa (120psi); REAR = 1200x20x20ply inflated to 690 kPa (100psi).

### LIFTING ACCESSORIES WEIGHTS

These weights only apply to standard equipment supplied by CONSTRUCT ENGINEERING.

- 6 Fall hook block = 166 kg
- 6 Fall hook block hook = 28 kg
- Single hook block = 42
- Single hook block hook = 2 kg
- Install unused fly-jib = 150 kg

### WINCH LOAD CHART

Rope Falls	Winch Load (Kg)
1	4 200
2	8 400
4	16 800
6	25 200

# LOAD CHARTS

## RATED CAPACITY CHART 401, 402, 403

### RATED CAPACITIES ON MAIN WINCH ROPE USED IN CONJUNCTION WITH 3 PART EXTENDABLE FLY JIB (Kilograms) ±42° ARTICULATION

CAPACITIES ON EXTENDABLE FLY JIB IN KILOGRAMS		401 LMI CHART 23.3m		
		402 LMI CHART 24.8m		
		403 LMI CHART 26.3m		
RADIUS	BOOM LENGTH			
	23.1	24.6	26.1	
9	1100	650		
	59	61		
10	1050	600	460	
	56	58	60	
11	1000	550	440	
	53	55	58	
12	950	550	420	
	50	52	55	
13	900	500	400	
	46	49	52	
14	850	500	380	
	43	46	49	
15	800	450	360	
	39	43	46	
16	800	450	340	
	34	39	43	
17	750	450	320	
	30	35	40	
17.3	750	450	320	
	28	34	39	
18	700	400	320	
	24	31	36	
19	700	400	300	
	16	26	32	
20	650	400	300	
	19.791 RAD @ 0 DEG	21	29	
21		400	280	
		10	22	
22		400	280	
		21.291 RAD @ 0 DEG	15	
22.8			280	
			22.791 RAD @ 0 DEG	

#### NOTES

1. Designed to meet AS1418.1, AS1418.5 and AS3990.
2. Area enclosed by the red double line denotes structural limitations — all other rated capacities do not exceed 66.7% of tipping loads.
3. Lift and carry on firm level ground (<1° side slope). Load must be carried on the shortest possible boom and close to the ground. Maximum crane speed when loaded = 3 km/hr.
4. Weight of slings to be added to load.
5. Lifting and mobilizing load must be done with air bags dumped.
6. TYRES: FRONT = 1200x20x20ply inflated to 828 kPa (120psi); REAR = 1200x20x20ply inflated to 690 kPa (100psi).

#### LIFTING ACCESSORIES WEIGHTS

These weights only apply to standard equipment supplied by CONSTRUCT ENGINEERING.

- 6 Fall hook block = 166 kg
- 6 Fall hook block hook = 28 kg
- Single hook block = 42
- Single hook block hook = 2 kg
- Install unused fly-jib = 150 kg

#### WINCH LOAD CHART

Rope Falls	Winch Load (Kg)
1	4 200
2	8 400
4	16 800
6	25 200

---

## Licensing & Disclaimer

The data contained herein is to the best of our knowledge correct, however we accept no responsibility for errors. We reserve the right to alter this product without notice.

Some icons shown on pages 7-8 were made by Freepik ([www.freepik.com](http://www.freepik.com)), sourced from Flaticon ([www.flaticon.com](http://www.flaticon.com)). Licenced under Creative Commons BY 3.0