



CONSTRUCT ENGINEERING

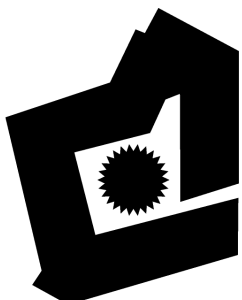
A division of Westfield Nominees

Humma UV35-25

DATASHEET



Features



- Removable 3-ton counterweight
- Adjustable airbag suspension system — smooth ride, reduced wear & maintenance
- Vibration-isolated cabin — large and comfortable for two people
- Fully powered boom to 20.5m

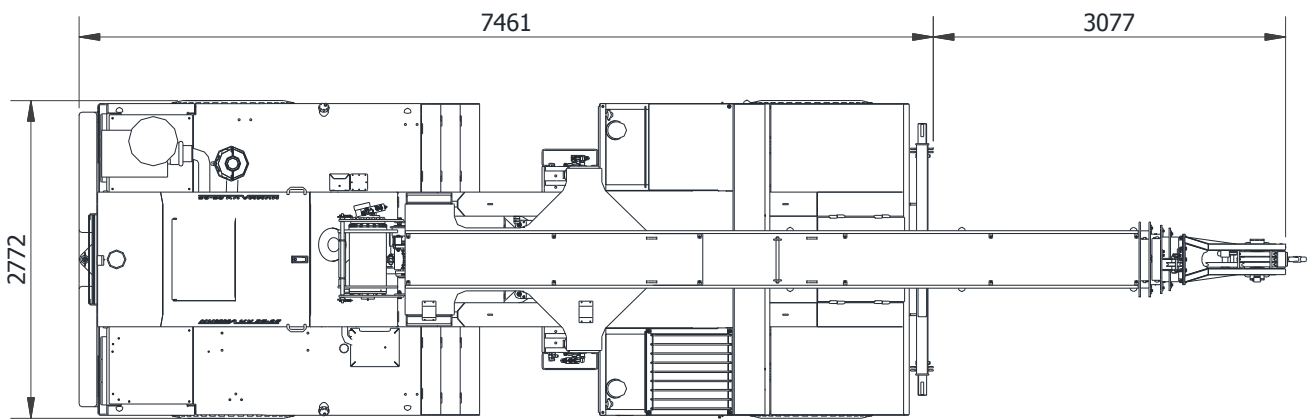
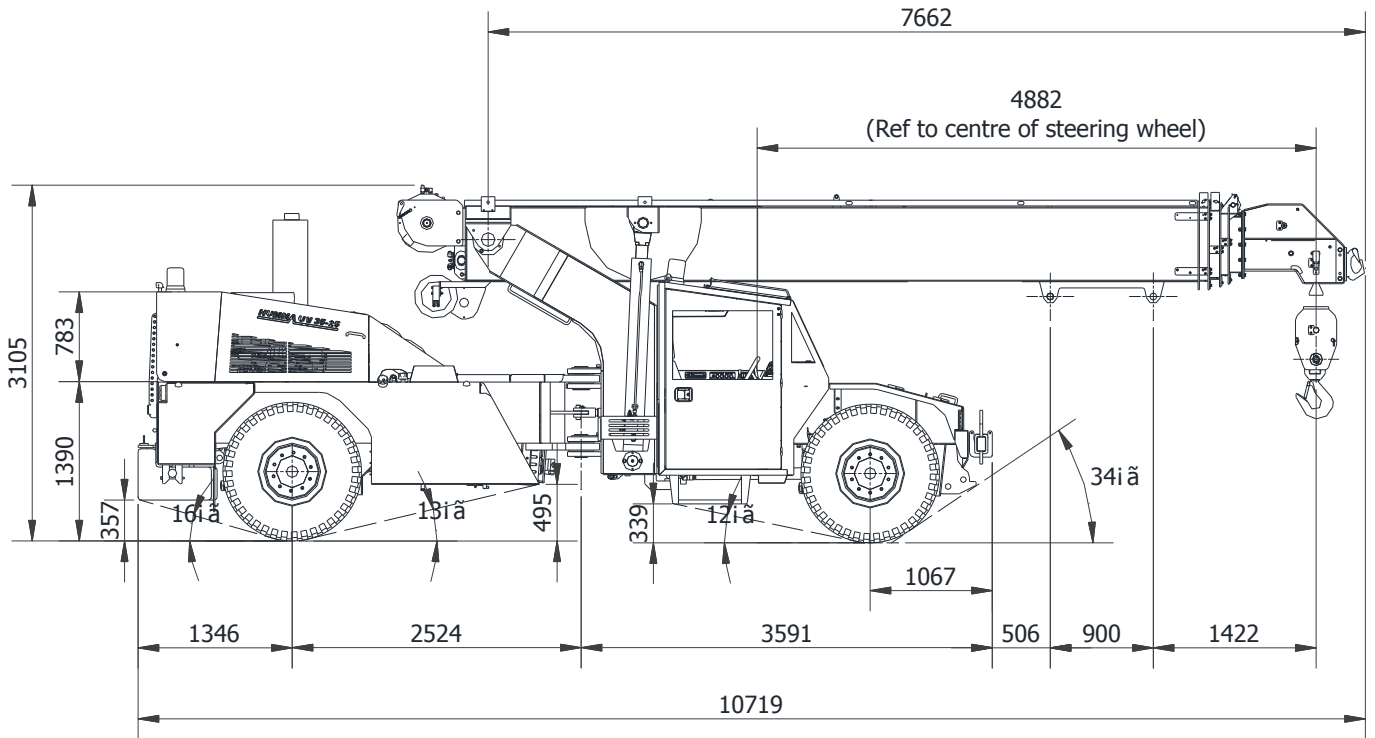
Made in Western Australia

Courtesy of Crane.Market

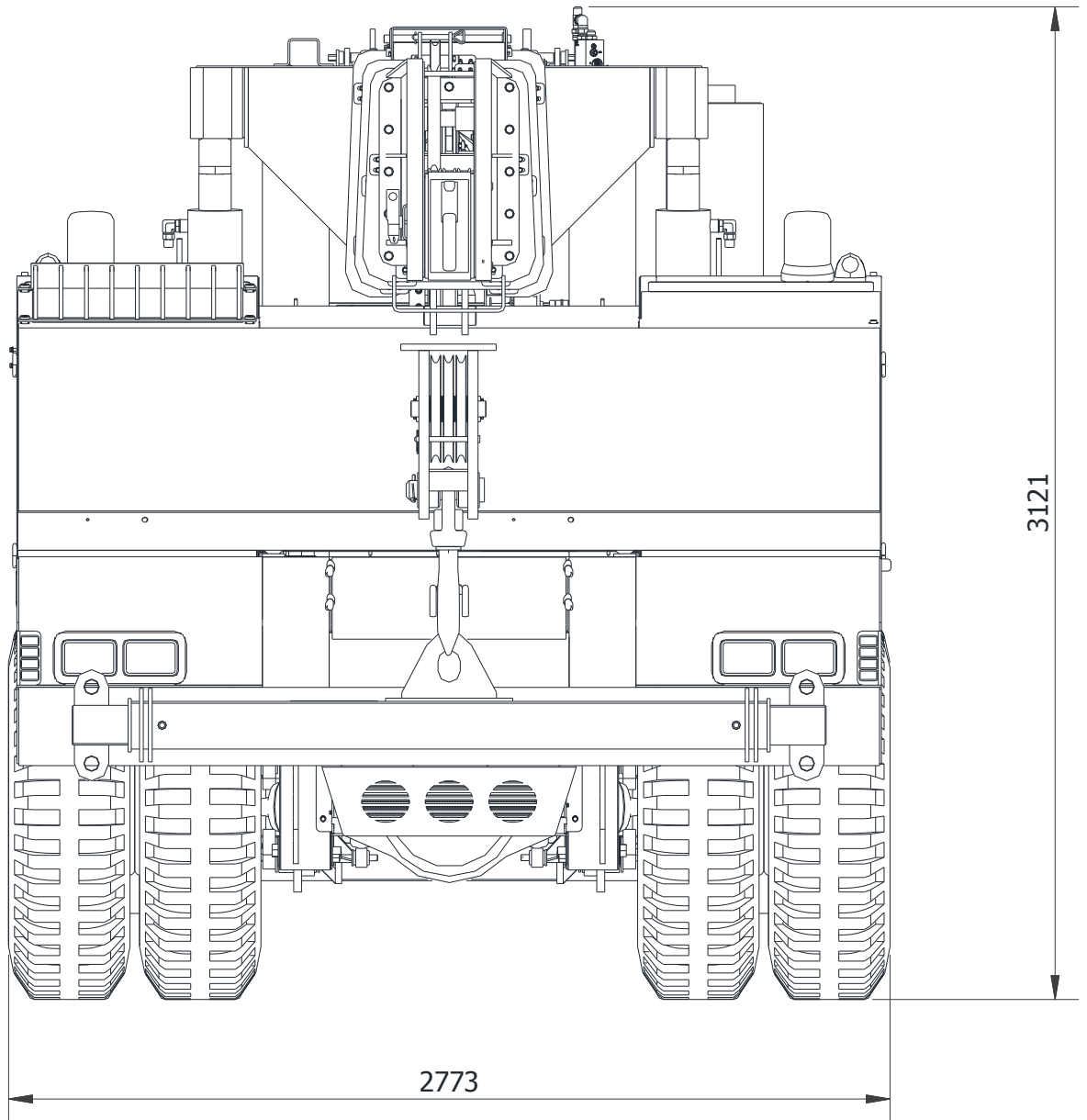
CONTENTS

Crane Dimensions	3-4
Radius Load Chart	5
Area of Operation	6
Technical Description.....	7-8
Load charts.....	9-12
Licensing & Disclaimer.....	13

DIMENSIONS

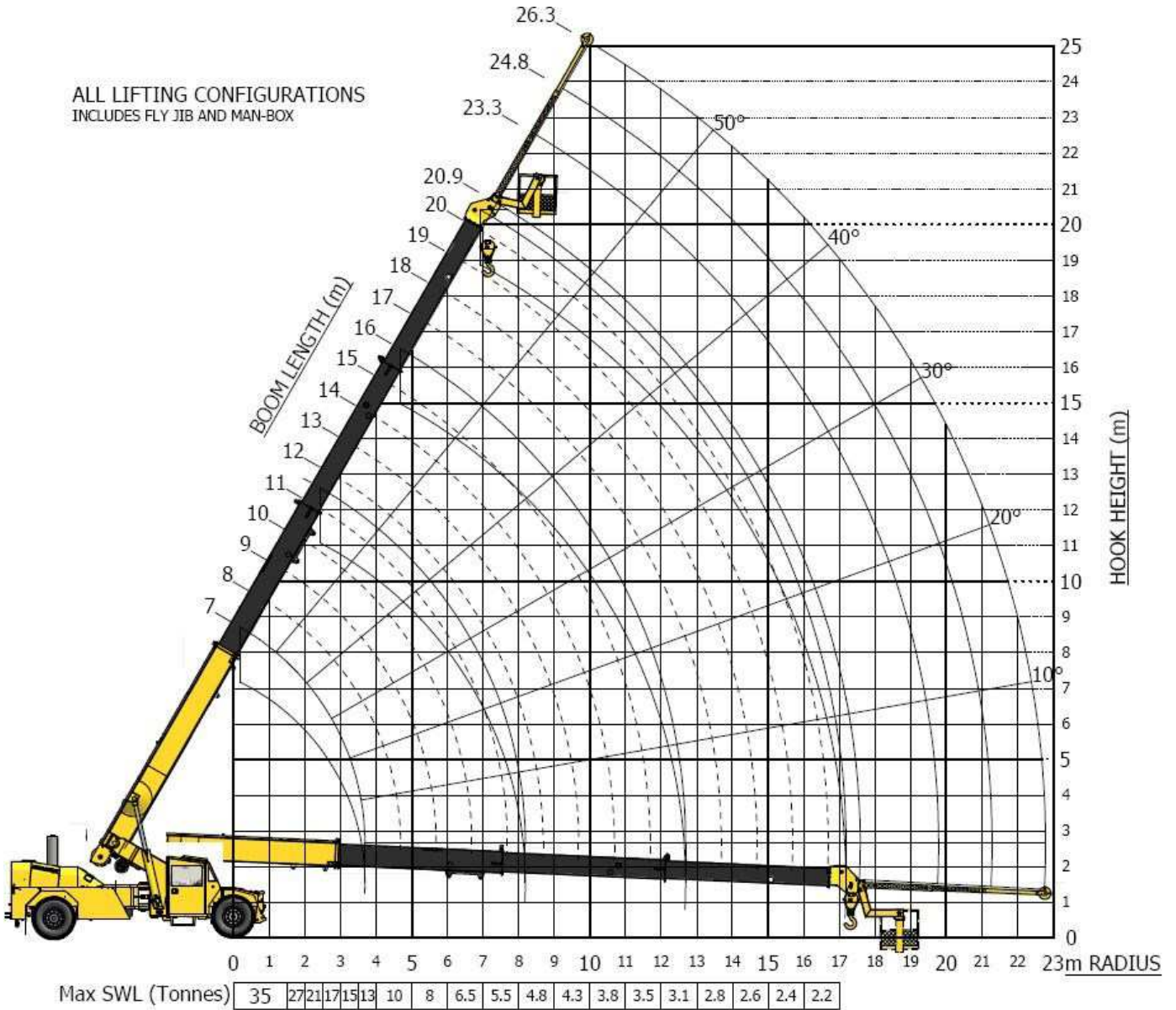


DIMENSIONS

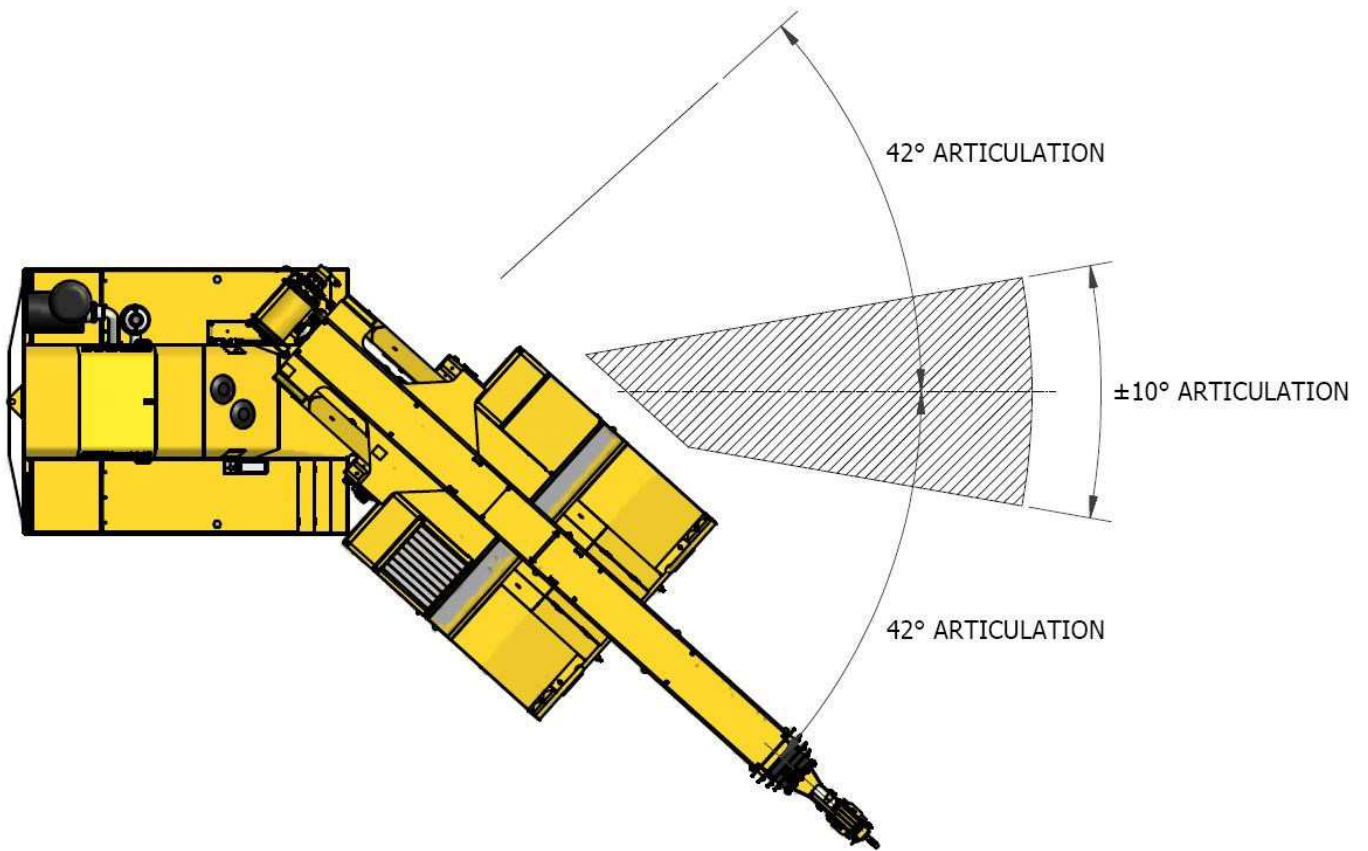


RADIUS LOAD CHART

ALL LIFTING CONFIGURATIONS
INCLUDES FLY JIB AND MAN-BOX



AREA OF OPERATION



TECHNICAL DESCRIPTION



Maximum Speed: 90 km/h



Maximum Lifting Capacity : 35t



Common Voltage: 12V



Transmission: Allison 3000SP

- Fully automatic 6-speed
- TC417 Converter



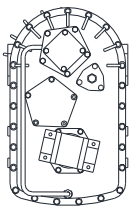
Engine: Cummins ISC285

- Power: 213kW
- Torque: 1085Nm
- Exhaust brake
- ADR 80/02 compliant



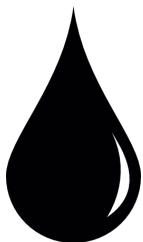
Axles: Kessler D81PL477

- Wedge brake operation
- Rear axle differential lock
- Front wheel holding brake



Transfer Case: ZF VG750

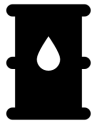
- 2/4WD
- Hi/Lo Air Shifted
- 2:1 ratio Low, 1:1 ratio High



Hydraulics: Pilot controls

- High speed: 447L/min
- Low speed: 87L/min
- Electric emergency steering pump

TECHNICAL DESCRIPTION



Hydraulic tank: 486L

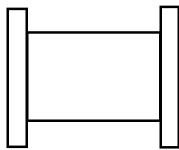


Fuel tank: 440L



Hook block

- 35T maximum rated capacity
- 2, 4 or 6 fall interchangeable options



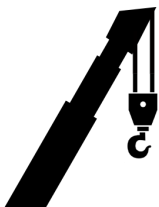
Winch: Brevini BAW-5000-PWD-H2VR

- 50kN Pulling capacity
- In-built rope retaining mechanism
- 2-speed operation (Hi/Lo)
- Danfoss hydraulic system

Wire rope: Ø16mm Non-Rotating RHOL

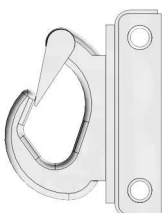


- Maximum Breaking Force: 196kN (19.8t)



Four-section boom

- Maximum hook height: 19m
- Boom elevation range: -3° to 60°



Machinery Hook: Custom-made Rhino hook

- Maximum load: 20t

LOAD CHARTS

RATED CAPACITY CHART I03, I04 RATED CAPACITIES ON SLIDING HOOK I (Kilograms) ±10°, ±42° ARTICULATION

CAPACITIES ON SLIDING HOOK I IN KILOGRAMS 1000 KG ON FRONT							I03 LMI CHART 10 DEG ARTICULATION			
							I04 LMI CHART 42 DEG ARTICULATION			
RADIUS	BOOM LENGTH									
	4.91	5.5	6	6.5	7	7.5	8	8.5	9	9.41
1.4	28592	28724	28778	28812	28836	28853	28866	28876		
	25368	25500	25554	25588	24874	23500	22356	21385		
	22	36	43	48	52	55	57	60		
2	24944	19420	19504	19546	19573	19592	19606	19617	19625	19631
	22081	17164	17247	17290	17317	17335	16790	15978	15286	14789
	1.58	20	32	39	45	49	52	55	57	59
2.5		17626	15143	15209	15243	15265	15281	15293	15302	15308
		15543	13338	13404	13438	13460	13476	13487	12829	12377
		2.17	19	31	38	43	47	50	53	55
3			13960	12292	12347	12375	12394	12407	12417	12424
			12267	10788	10842	10870	10889	10903	10913	10768
			2.67	18	30	36	41	45	49	51
3.5				11451	10257	10302	10327	10343	10355	10362
				10025	8967	9013	9037	9053	9065	9073
				3.17	17	28	35	40	44	47
4					9626	8730	8770	8791	8805	8814
					8395	7602	7641	7662	7677	7685
					3.67	16	27	34	39	42
4.5						8239	7543	7578	7596	7607
						7156	6540	6575	6593	6604
						4.17	16	26	33	37
5							7149	6594	6624	6638
							6182	5691	5722	5736
							4.67	15	26	31
5.5								6271	5817	5841
								5397	4997	5020
								5.17	15	23
6									5547	5162
									4750	4409
									5.67	11
6.1										5042
										4300
										6.08

NOTES

1. Designed to meet ASI418.1, ASI418.5 and AS3990.
2. Area enclosed by the red double line denotes structural limitations — all other rated capacities do not exceed 66.7% of tipping loads.
3. Lift and carry on firm level ground (<1° side slope). Load must be carried on the shortest possible boom and close to the ground. Maximum crane speed when loaded = 3 km/hr.
4. Weight of slings to be added to load.
5. Lifting and mobilizing load must be done with air bags dumped.
6. TYRES: FRONT = 1400x20x20ply inflated to 828 kPa (120psi); REAR = 1400x20x20ply inflated to 690 kPa (100psi).

LIFTING ACCESSORIES WEIGHTS

These weights only apply to standard equipment supplied by CONSTRUCT ENGINEERING.

- 6 Fall hook block = 166 kg
- 6 Fall hook block hook = 28 kg
- Single hook block = 42
- Single hook block hook = 2 kg
- Install unused fly-jib = 150 kg

WINCH LOAD CHART

Rope Falls	Winch Load (Kg)
1	5 000
2	10 000
4	20 000
6	30 000

LOAD CHARTS

RATED CAPACITY CHART 303, 304 RATED CAPACITIES ON SLIDING HOOK I (Kilograms) ±10°, ±42° ARTICULATION

CAPACITIES ON SLIDING HOOK I IN KILOGRAMS 3000 KG ON REAR							303 LMI CHART 10 DEG ARTICULATION			
							304 LMI CHART 42 DEG ARTICULATION			
RADIUS	BOOM LENGTH									
	4.91	5.5	6	6.5	7	7.5	8	8.5	9	9.41
1.4	35000	35000	35000	35000	35000	35000	35000	35000		
	32240	32372	30780	28044	25924	24218	22811	21627		
	22	36	43	48	52	55	57	60		
2	32195	25138	25222	25264	25291	25310	25324	25335	25343	25349
	28182	21974	22057	22100	20351	18835	17610	16595	15736	15125
	1.58	20	32	39	45	49	52	55	57	59
2.5		22904	19717	19784	19818	19840	19855	19867	19876	19882
		19983	17186	17252	17286	16434	15255	14294	13491	12924
		2.17	19	31	38	43	47	50	53	55
3			18248	16104	16159	16187	16206	16219	16229	16236
			15874	13994	14049	14077	13761	12808	12026	11480
			2.67	18	30	36	41	45	49	51
3.5				15062	13524	13570	13594	13610	13622	13630
				13063	11716	11761	11786	11802	11017	10474
				3.17	17	28	35	40	44	47
4					12745	11589	11629	11650	11664	11673
					11018	10007	10046	10067	10082	9751
					3.67	16	27	34	39	42
4.5						10983	10084	10119	10138	10148
						9465	8678	8712	8731	8742
						4.17	16	26	33	37
5							9600	8881	8911	8926
							8244	7615	7646	7660
							4.67	15	26	31
5.5		GREEN 10 DEG ARTICULATION						8484	7896	7920
		YELLOW 42 DEG ARTICULATION						7259	6746	6769
								5.17	15	23
6								7565	7068	
								6448	6013	
								5.67		11
6.1		UNDER LINED VALUES INDICATE RADIUS AT					0 DEG			6924
										5883
										6.08

NOTES

1. Designed to meet ASI418.1, ASI418.5 and AS3990.
2. Area enclosed by the red double line denotes structural limitations — all other rated capacities do not exceed 66.7% of tipping loads.
3. Lift and carry on firm level ground (<1° side slope). Load must be carried on the shortest possible boom and close to the ground. Maximum crane speed when loaded = 3 km/hr.
4. Weight of slings to be added to load.
5. Lifting and mobilizing load must be done with air bags dumped.
6. TYRES: FRONT = 1400x20x20ply inflated to 828 kPa (120psi); REAR = 1400x20x20ply inflated to 690 kPa (100psi).

LIFTING ACCESSORIES WEIGHTS

These weights only apply to standard equipment supplied by CONSTRUCT ENGINEERING.

- 6 Fall hook block = 166 kg
- 6 Fall hook block hook = 28 kg
- Single hook block = 42
- Single hook block hook = 2 kg
- Install unused fly-jib = 150 kg

WINCH LOAD CHART

Rope Falls	Winch Load (Kg)
1	5 000
2	10 000
4	20 000
6	30 000

LOAD CHARTS

RATED CAPACITY CHART 101, 102 RATED CAPACITIES ON MAIN WINCH ROPE (Kilograms) ±10°, ±42° ARTICULATION

CAPACITIES ON SHEAVE HOOK IN KILOGRAMS														101 LMI CHART 10 DEG ARTICULATION	
1000 KG ON FRONT														102 LMI CHART 42 DEG ARTICULATION	
RADIUS	BOOM LENGTH														
	7.225	8	9	10	11	12	13	14	15	16	17	18	19	20	20.725
1.4	30000	30000	30000	29986											
	26968	24655	22434	20768											
	51	55	60	63											
2	20982	20830	20672	20545	20440										
	18725	18573	16813	15438	14377										
	44	50	55	59	62										
3	13541	13424	13300	13200	13118	13049	12990								
	12036	11919	11795	11307	10412	9202	9000								
	30	39	47	52	56	59	62								
4	10107	9715	9611	9526	9455	9440	9536	9618	9264						
	8947	8587	8483	8397	8327	7402	7063	6777	6575						
	3.89	25	37	44	49	53	57	59	62						
5		8108	7394	7319	7256	7244	7332	7407	7472	7529	7027				
		7141	6491	6417	6353	6341	5996	5731	5506	5313	5136				
		4.67	24	35	42	47	51	54	57	59	61				
6			6336	5845	5789	5778	5862	5932	5994	6047	6094	6135	5535		
			5540	5093	5036	5026	5109	5180	4810	4628	4469	4331	4250		
			5.67	22	33	40	45	49	52	55	57	59	61		
7				5096	4738	4730	4811	4879	4937	4988	5033	5072	5108	5139	4474
				4419	4093	4085	4166	4234	4292	4129	3978	3846	3729	3626	3470
				6.67	21	32	38	43	47	51	53	56	58	59	61
8					4179	3942	4021	4088	4144	4194	4237	4275	4309	4340	4360
					3591	3378	3457	3523	3580	3629	3673	3474	3362	3263	3198
					7.67	20	30	37	42	46	49	52	54	56	57
9						3509	3405	3472	3527	3575	3618	3655	3688	3718	3737
						2988	2904	2970	3026	3074	3116	3153	3186	2974	2911
						8.67	19	29	35	40	44	47	50	53	54
10							3059	2977	3033	3080	3122	3158	3191	3220	3239
							2592	2526	2582	2629	2670	2707	2739	2769	2675
							9.67	19	28	34	39	43	46	49	51
11								2693	2627	2675	2716	2752	2784	2813	2831
								2270	2217	2265	2306	2342	2374	2402	2421
								10.67	18	27	33	38	42	45	47
12									2390	2336	2377	2413	2445	2473	2492
									2003	1960	2001	2037	2068	2097	2115
									11.67	17	26	32	37	41	43
13										2135	2089	2126	2157	2185	2204
										1779	1742	1778	1810	1838	1857
										12.67	17	26	31	36	39
14											1917	1878	1910	1939	1957
											1587	1556	1588	1616	1635
											13.67	16	25	31	34
15												1729	1696	1724	1743
												1421	1395	1423	1442
												14.67	16	24	28
16													1565	1536	1555
													1277	1254	1273
													15.67	15	22
17														1421	1388
														1150	1123
														16.67	12
17.4															1326
															1067
															0

NOTES

1. Designed to meet ASI418.1, ASI418.5 and AS3990.
2. Area enclosed by the red double line denotes structural limitations — all other rated capacities do not exceed 66.7% of tipping loads.
3. Lift and carry on firm level ground (<1° side slope). Load must be carried on the shortest possible boom and close to the ground. Maximum crane speed when loaded = 3 km/hr.
4. Weight of slings to be added to load.
5. Lifting and mobilizing load must be done with air bags dumped.
6. TYRES: FRONT = 1400x20x20ply inflated to 828 kPa (120psi); REAR = 1400x20x20ply inflated to 690 kPa (100psi).

LIFTING ACCESSORIES WEIGHTS

These weights only apply to standard equipment supplied by CONSTRUCT ENGINEERING.

- 6 Fall hook block = 166 kg
- 6 Fall hook block hook = 28 kg
- Single hook block = 42
- Single hook block hook = 2 kg
- Install unused fly-jib = 150 kg

WINCH LOAD CHART

Rope Falls	Winch Load (Kg)
1	5 000
2	10 000
4	20 000
6	30 000

LOAD CHARTS

RATED CAPACITY CHART 301, 302 RATED CAPACITIES ON MAIN WINCH ROPE (Kilograms) ±10°, ±42° ARTICULATION

CAPACITIES ON SHEAVE HOOK IN KILOGRAMS														301 LMI CHART 10 DEG ARTICULATION	
3000 KG ON REAR														302 LMI CHART 42 DEG ARTICULATION	
RAD	BOOM LENGTH														
	7.225	8	9	10	11	12	13	14	15	16	17	18	19	20	20.725
1.4	30000	30000	30000	30000											
	27821	25069	22459	20522											
2	51	55	60	63											
	26700	26548	26390	26263	26158										
3	21855	19447	17218	15591	14349										
	44	50	55	59	62										
4	17353	17236	17112	17012	16930	16912	17021								
	15243	15126	13275	11829	10751	9949	9383								
5	30	39	47	52	56	59	62								
	13045	12574	12470	12385	12314	12299	12395	12477	12548						
6	11419	10992	10888	10042	9001	8247	7728	7300	6942						
	3.89	25	37	44	49	53	57	59	62						
7		10558	9681	9606	9543	9531	9619	9694	9759	9816	9866				
		4.67	24	35	42	47	51	54	57	59	61				
8			8354	7751	7695	7684	7768	7838	7900	7953	8000	8041	8078		
			7237	6696	6640	6629	6123	5717	5384	5105	4868	4662	4483		
9			5.67	22	33	40	45	49	52	55	57	59	61		
				6811	6371	6364	6444	6512	6571	6622	6666	6706	6741	6773	6794
10				5862	5467	5460	5540	5287	4951	4674	4440	4239	4064	3911	3811
				6.67	21	32	38	43	47	51	53	56	58	59	61
11					5671	5371	5451	5517	5574	5623	5666	5705	5739	5769	5790
					4845	4580	4660	4726	4639	4356	4122	3922	3750	3599	3502
12					7.67	20	30	37	42	46	49	52	54	56	57
						4828	4676	4742	4798	4846	4888	4925	4959	4988	5008
13						8.67	19	29	35	40	44	47	50	53	54
							4242	4121	4176	4224	4265	4302	4334	4364	4383
14							3587	3488	3544	3591	3633	3685	3711	3750	3794
							9.67	19	28	34	39	43	46	49	51
15								3765	3667	3714	3756	3792	3824	3852	3871
								3172	3091	3139	3180	3216	3154	3002	2904
16								10.67	18	27	33	38	42	45	47
									3370	3289	3330	3366	3398	3426	3445
17									2828	2761	2803	2838	2870	2871	2772
									11.67	17	26	32	37	41	43
18										3038	2969	3005	3037	3065	3083
										2538	2482	2518	2550	2578	2597
19										12.67	17	26	31	36	39
											2754	2695	2727	2755	2774
20											2291	2243	2275	2303	2322
											13.67	16	25	31	34
21												2509	2458	2487	2505
												14.67	16	24	28
22													2295	2251	2270
													1891	1855	1874
23													15.67	15	22
														2107	2061
24														1727	1689
														16.67	12
25															1984
															1620
17.39															0

NOTES

- Designed to meet ASI418.1, ASI418.5 and AS3990.
- Area enclosed by the red double line denotes structural limitations — all other rated capacities do not exceed 66.7% of tipping loads.
- Lift and carry on firm level ground (<1° side slope). Load must be carried on the shortest possible boom and close to the ground. Maximum crane speed when loaded = 3 km/hr.
- Weight of slings to be added to load.
- Lifting and mobilizing load must be done with air bags dumped.
- TYRES: FRONT = 1400x20x20ply inflated to 828 kPa (120psi); REAR = 1400x20x20ply inflated to 690 kPa (100psi).

LIFTING ACCESSORIES WEIGHTS

These weights only apply to standard equipment supplied by CONSTRUCT ENGINEERING.

- 6 Fall hook block = 166 kg
- 6 Fall hook block hook = 28 kg
- Single hook block = 42
- Single hook block hook = 2 kg
- Install unused fly-jib = 150 kg

WINCH LOAD CHART

Rope Falls	Winch Load (Kg)
1	5 000
2	10 000
4	20 000
6	30 000

Licensing & Disclaimer

The data contained herein is to the best of our knowledge correct, however we accept no responsibility for errors. We reserve the right to alter this product without notice.

Some icons shown on pages 7-8 were made by Freepik (www.freepik.com), sourced from Flaticon (www.flaticon.com). Licenced under Creative Commons BY 3.0