

S40-70FT SERIES

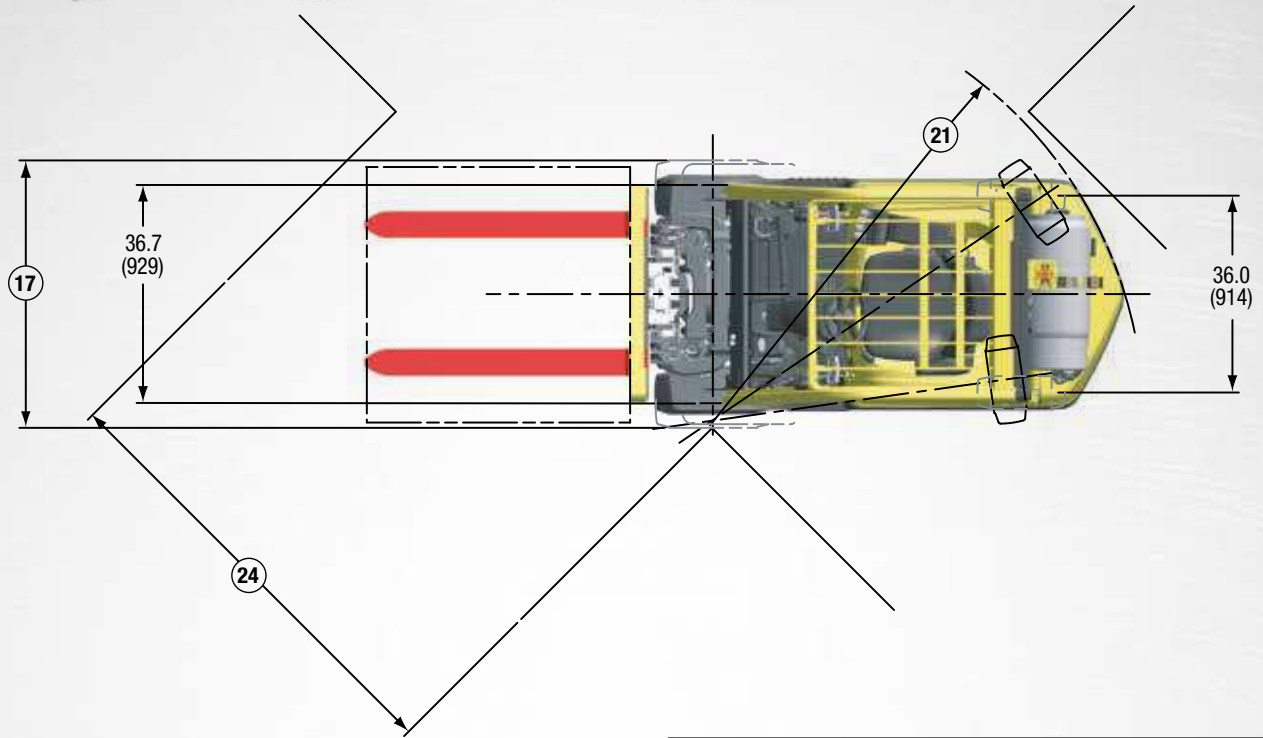


**STRONG PARTNERS.
TOUGH TRUCKS.™**

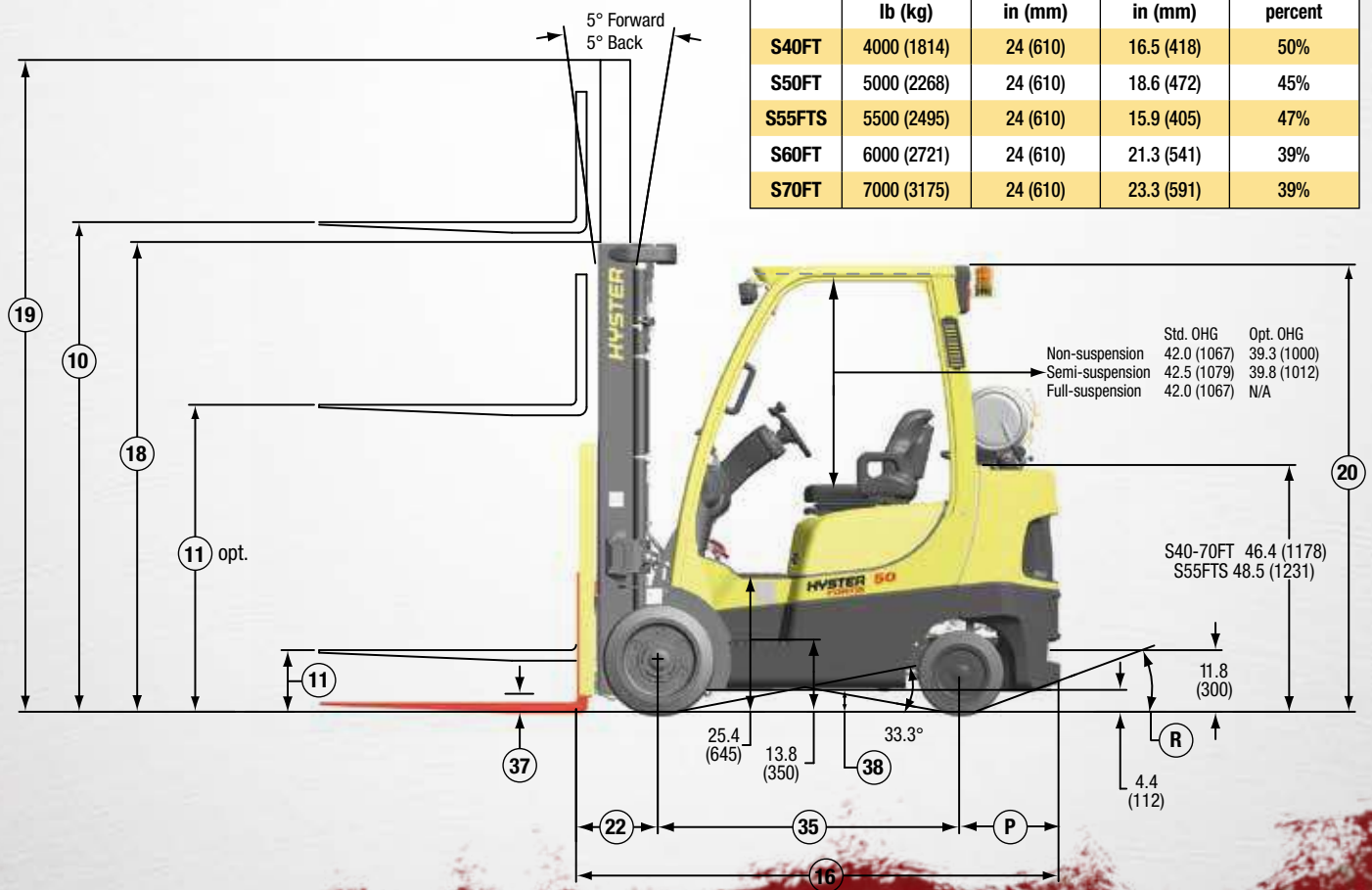
TECHNICAL GUIDE

Sit-down, Counterbalanced I.C.E. Cushion Tire

S40-70FT DIMENSIONS



| MODEL | LIFT CAPACITY | LOAD CENTER | P | R |
|--------|---------------|-------------|------------|---------|
| | lb (kg) | in (mm) | in (mm) | percent |
| S40FT | 4000 (1814) | 24 (610) | 16.5 (418) | 50% |
| S50FT | 5000 (2268) | 24 (610) | 18.6 (472) | 45% |
| S55FTS | 5500 (2495) | 24 (610) | 15.9 (405) | 47% |
| S60FT | 6000 (2721) | 24 (610) | 21.3 (541) | 39% |
| S70FT | 7000 (3175) | 24 (610) | 23.3 (591) | 39% |



Circled dimensions correspond to the line numbers on the tabulated chart inside the technical guide. Dimensions are in inches (millimeters). Truck shown with optional equipment.

S40-50FT SPECIFICATIONS

| GENERAL | 1 | Manufacturer Name | Hyster Company | | | | | |
|---------|----|---|---------------------------|---------------------------|---------------------|---------------------------|---------------------------|-----|
| | 2 | Model | S40FT | | | S50FT | | |
| | 3 | Engine | PSI 2.4L | Kubota 2.5L | | PSI 2.4L | Kubota 2.5L | |
| | 3 | Rated Capacity | 4000 (1814) | | | 5000 (2268) | | |
| | 4 | Load Center, Distance | 24.0 (610) | | | | | |
| | 5 | Power Type | LPG | Dual Fuel | LPG | LPG | Dual Fuel | LPG |
| | 6 | Operator Type | Sit-Down Rider | | | | | |
| | 7 | Step Height | 13.8 (350) | | | | | |
| | 8 | Tire Type - Cushion, Solid, Pneumatic | Cushion | | | | | |
| | 9 | Wheels, Number - Front / Rear | 2x / 2 | | | | | |
| | 10 | Lift Height, Top of Fork (TOF) | 129 (3292) | | | | | |
| | 11 | Lift Heights, Std. Limited Free Lift (LFL) w/o LBR (TOF) | 5 (140) | | | | | |
| | | Lift Heights, Optional Full Free Lift (FFL) w/o LBR (TOF) | 62 (1575) | | | | | |
| | 12 | Standard Carriage Width | 38.5 (980) | | | | | |
| | 13 | Forks, Thickness x Width x Length | 1.6 X 3.9 X 42 | | | | | |
| | | Forks, Thickness x Width x Length | (40 X 100 X 1067) | | | | | |
| | 14 | Fork Spread, Outside Dimensions | 38.3 (974) | | | | | |
| | 15 | Mast Tilt Angles, Forward / Backward | 5F / 5B | | | | | |
| | 16 | Length To Face of Forks | 88.1 (2238) | | | 90.2 (2291) | | |
| | 17 | Overall Width, Standard Tread | 42.0 (1067) | | | | | |
| | | Overall Width, Wide Tread | 48.9 (1242) | | | | | |
| | 18 | Height, Standard Mast - Lowered | 85 (2135) | | | | | |
| | 19 | Height, Standard Mast - Extended with LBR | 178 (4515) | | | | | |
| | | Height, Standard Mast - Extended without LBR | 151 (3840) | | | | | |
| | 20 | Height, Standard Overhead Guard | 84 (2128) | | | | | |
| | | Height, Optional Overhead Guard | 82 (2061) | | | | | |
| | 21 | Turning Radius, Minimum Outside (OTR) | 76.8 (1950) | | | 78.7 (2000) | | |
| | 22 | Length, Center of Wheel to Face of Forks | 15.4 (390) | | | | | |
| | 23 | Aisle Width, Right Angle Stack (Add Length of Load) | 92.1 (2340) | | | 94.1 (2390) | | |
| | 24 | Equal Aisle, 90-Degree Intersecting Aisle | 73.8 (1875) | | | 74.7 (1897) | | |
| | 25 | Travel Speed, Powershift Transmission RL/NL | 10.9 / 11.3 (17.6 / 18.2) | 11.1 / 11.2 (17.8 / 18.0) | | 10.9 / 11.3 (17.6 / 18.2) | 11.1 / 11.2 (17.8 / 18.0) | |
| | 26 | Lift Speed, Standard 2-Stage LFL RL/NL | 120/124 (.61/.63) | 122 / 126 (.62 / .64) | | 120/124 (.61/.63) | 122 / 126 (.62 / .64) | |
| | | Lift Speed, Optional 2-Stage FFL RL/NL | 106/110 (.54/.56) | 106 / 112 (.54 / .57) | | 106/110 (.54/.56) | 106 / 112 (.54 / .57) | |
| | | Lift Speed, Optional 3-Stage FFL RL/NL | 112/116 (.57/.59) | 114 / 120 (.58 / .61) | | 112/116 (.57/.59) | 114 / 120 (.58 / .61) | |
| | | Lift Speed, Optional 4-Stage FFL RL/NL | 120/124 (.61/.63) | 122 / 126 (.62 / .64) | | 120/124 (.61/.63) | 122 / 126 (.62 / .64) | |
| | 27 | Lowering Speed, Standard 2-Stage LFL RL/NL | 114 / 98 (.58 / .50) | | | | | |
| | | Lowering Speed, Optional 2-Stage FFL RL/NL | 98 / 83 (.50 / .42) | | | | | |
| | | Lowering Speed, Optional 3-Stage FFL RL/NL | 106 / 93 (.54 / .47) | | | | | |
| | | Lowering Speed, Optional 4-Stage FFL RL/NL | 108 / 73 (.55 / .37) | | | | | |
| | 28 | Maximum drawbar pull RL/NL | 5322 / 1764 (2414 / 800) | 4680 / 1764 (2123 / 800) | | 5282 / 1676 (2396 / 760) | 4643 / 1676 (2106 / 760) | |
| | | Drawbar Pull, Standard Transmission @ 1 mph RL/NL | 4453 / 1764 (2020 / 800) | 4050 / 1764 (1837 / 800) | | 4418 / 1676 (2004 / 760) | 4012 / 1676 (1820 / 760) | |
| | 29 | Gradeability, Standard Transmission @ 1 mph RL/NL | 39 / 24 | 35 / 24 | | 33 / 21 | 30 / 21 | |
| | 31 | Weight, Standard Truck (2-Stg. LFL) NL | 7803 (3539) | | | 8587 (3895) | | |
| | | Weight, Standard Truck (2-Stg. LFL) RL | 11803 (5554) | | | 13587 (6163) | | |
| | 32 | Axle Loading, Static Front / Rear NL | 3570 / 4233 (1619 / 1920) | | | 3402 / 5185 (1543 / 2352) | | |
| | | Axle Loading, Static Front / Rear RL | 10366 / 1437 (4702 / 652) | | | 11897 / 1690 (5396 / 767) | | |
| | 33 | Tire Size, Front | 21 X 7 x 15 | | | | | |
| | 34 | Tire Size, Rear | 16 x 5 x 10.5 | | | | | |
| | 35 | Wheelbase | 56.3 (1430) | | | | | |
| | 37 | Ground Clearance, Lowest Point NL (w/RL subtract 6mm) | 3.6 (91) | | | | | |
| | 38 | Ground Clearance, Center of Wheelbase NL | 4.9 (125) | | | | | |
| | 39 | Service Brake - Method of Control / Operation | Foot / Hydraulic | | | | | |
| | 40 | Parking Brake - Method of Control / Operation | Hand / Mechanical | | | | | |
| | 41 | Battery Type | Maintenance Free | | | | | |
| | 42 | Volts / Cold Cranking Amps | 12 / 475 | | | | | |
| | 43 | Engine, Manufacturer / Model | PSI 2.4L | Kubota 2.5L | | PSI 2.4L | Kubota 2.5L | |
| | 44 | Permanent Output | 59 (44) | | | 59 (44) | | |
| | 45 | Torque @ Rated RPM | 121 (16.7) @ 2000 RPM | | 131 (18) @ 1000 RPM | | 121 (16.7) @ 2000 RPM | |
| | 46 | Number of Cylinders / Displacement | 4 / 2351 (143) | | 4 / 2491 (152) | | 4 / 2351 (143) | |
| | 47 | Transmission Type, Standard | Electronic Powershift | | | | | |
| | | Standard Speeds, Forward - Reverse | 1-1 | | | | | |
| | 49 | Hydraulic Tank Capacity (Drain and Refill) | 9.5 (36.1) | | | | | |
| | 50 | Fuel Tank Capacity (Dual Fuel - Gasoline) | NA | 10.7 (40.5) | NA | NA | 10.7 (40.5) | NA |
| | 51 | Auxiliary Hydraulic Pressure Relief for Attachments | 2250 (15.4) | | | | | |

NOTE: Above specifications, unless otherwise listed, are for a standard truck without optional equipment. Right Angle Stack and Equal Intersecting Aisle are calculated using a 40" wide pallet.

CERTIFICATION: These Hyster® lift trucks meet design specifications of Part II ANSI B56.1-1969, as required by OSHA Section 1910.178(a)(2) and also comply with Part III ANSI B56.1-revision in effect at time of manufacture. Certification of compliance with the applicable ANSI standards appears on the lift truck. Performance specifications are for a truck equipped as described under Standard Equipment on this Technical Guide. Performance specifications are affected by the condition of the vehicle and how it is equipped, as well as by the nature, condition of the operating area, proper service and maintenance of the vehicle. If these specifications are critical, the proposed application should be discussed with your dealer.

S55FTS SPECIFICATIONS

| | | Hyster Company | | | | |
|---------------------------|--------------------|---|---|-----------------------|-----------------------|-----------------------|
| | | S55FTS | | | | |
| GENERAL | 1 | Manufacturer Name | Hyster Company | | | |
| | 2 | Model | S55FTS | | | |
| | | Engine | PSI 2.4L | Kubota 2.5L | | |
| | 3 | Rated Capacity | lb (kg) | 5500 (2495) | | |
| | 4 | Load Center, Distance | in (mm) | 24.0 (610) | | |
| | 5 | Power Type | LPG | Dual Fuel | LPG | |
| | 6 | Operator Type | Sit-Down Rider | | | |
| | 7 | Step Height | in (mm) | 13.8 (350) | | |
| | 8 | Tire Type - Cushion, Solid, Pneumatic | Cushion | | | |
| DIMENSIONS | 9 | Wheels, Number - Front / Rear | 2x/2 | | | |
| | 10 | Lift Height, Top of Fork (TOF) | in (mm) | 129 (3292) | | |
| | 11 | Lift Heights, Std. Limited Free Lift (LFL) w/o LBR (TOF) | in (mm) | 5 (140) | | |
| | | Lift Heights, Optional Full Free Lift (FFL) w/o LBR (TOF) | in (mm) | 62 (1575) | | |
| | 12 | Standard Carriage Width | in (mm) | 38.5 (980) | | |
| | 13 | Forks, Thickness x Width x Length | in (mm) | 1.6 X 3.9 X 42 | | |
| | | Forks, Thickness x Width x Length | (mm) | (40 x 100 x 1067) | | |
| | 14 | Fork Spread, Outside Dimensions | in (mm) | 38.3 (974) | | |
| | 15 | Mast Tilt Angles, Forward / Backward | degrees | 5F/5B | | |
| | 16 | Length To Face of Forks | in (mm) | 87.7 (2228) | | |
| | 17 | Overall Width, Standard Tread | in (mm) | 43.6 (1108) | | |
| | | Overall Width, Wide Tread | in (mm) | 48.9 (1242) | | |
| | 18 | Height, Standard Mast - Lowered | in (mm) | 85 (2135) | | |
| | 19 | Height, Standard Mast - Extended with LBR | in (mm) | 178 (4515) | | |
| | | Height, Standard Mast - Extended without LBR | in (mm) | 151 (3840) | | |
| | 20 | Height, Standard Overhead Guard | in (mm) | 84 (2128) | | |
| | | Height, Optional Overhead Guard | in (mm) | 82 (2061) | | |
| | 21 | Turning Radius, Minimum Outside (OTR) | in (mm) | 76.3 (1937) | | |
| | 22 | Length, Center of Wheel to Face of Forks | in (mm) | 15.4 (390) | | |
| | 23 | Aisle Width, Right Angle Stack (Add Length of Load) | in (mm) | 91.6 (2327) | | |
| | 24 | Equal Aisle, 90-Degree Intersecting Aisle | in (mm) | 74.2 (1885) | | |
| | PERFORMANCE | 25 | Travel Speed, Powershift Transmission RL/NL | mph (km/h) | 10.9/11.3 (17.6/18.2) | 11.1/11.2 (17.8/18.0) |
| | | 26 | Lift Speed, Standard 2-Stage LFL RL/NL | ft/min (m/s) | 120/124 (.61/.63) | 124 /126 (.63/.64) |
| | | | Lift Speed, Optional 2-Stage FFL RL/NL | ft/min (m/s) | 106/110 (.54/.56) | 108/112 (.55/.57) |
| | | Lift Speed, Optional 3-Stage FFL RL/NL | ft/min (m/s) | 112/116 (.57/.59) | 116/120 (.59/.61) | |
| | | Lift Speed, Optional 4-Stage FFL RL/NL | ft/min (m/s) | 120/124 (.61/.63) | 122/126 (.62/.64) | |
| 27 | | Lowering Speed, Standard 2-Stage LFL RL/NL | ft/min (m/s) | 114/98 (.58 /.50) | | |
| | | Lowering Speed, Optional 2-Stage FFL RL/NL | ft/min (m/s) | 98/83 (.50 /.42) | | |
| | | Lowering Speed, Optional 3-Stage FFL RL/NL | ft/min (m/s) | 106/93 (.54 /.47) | | |
| | | Lowering Speed, Optional 4-Stage FFL RL/NL | ft/min (m/s) | 108/73 (.55 /.37) | | |
| 28 | | Maximum drawbar pull RL/NL | lb (kg) | 5260/1676 (2386/760) | 4623/1676 (2097/760) | |
| | | Drawbar Pull, Standard Transmission @ 1 mph RL/NL | | 4398/1676 (1995/760) | 3993/1676 (1811/760) | |
| 29 | | Gradeability, Standard Transmission @ 1 mph RL/NL | % | 31/20 | 28/20 | |
| WT. | | 31 | Weight, Standard Truck (2-Stg. LFL) NL | lb (kg) | 9113 (4134) | |
| | | Weight, Standard Truck (2-Stg. LFL) RL | lb (kg) | 14613 (6628) | | |
| | 32 | Axle Loading, Static Front / Rear NL | lb (kg) | 3454/5659 (1567/2567) | | |
| | | Axle Loading, Static Front / Rear RL | lb (kg) | 12799/1814 (5806/823) | | |
| | 33 | Tire Size, Front | | 21 X 8 x 15 | | |
| | 34 | Tire Size, Rear | | 16 x 6 x 10.5 | | |
| TIRES & WHEELS | 35 | Wheelbase | in (mm) | 56.3 (1430) | | |
| | 37 | Ground Clearance, Lowest Point NL (w/RL subtract 6mm) | in (mm) | 3.6 (91) | | |
| | 38 | Ground Clearance, Center of Wheelbase NL | in (mm) | 4.9 (125) | | |
| | 39 | Service Brake - Method of Control / Operation | | Foot/Hydraulic | | |
| | 40 | Parking Brake - Method of Control / Operation | | Hand/Mechanical | | |
| | 41 | Battery Type | | Maintenance Free | | |
| POWERTRAIN | 42 | Volts / Cold Cranking Amps | v / cca | 12/475 | | |
| | 43 | Engine, Manufacturer / Model | | PSI 2.4L | Kubota 2.5L | |
| | 44 | Permanent Output | hp (kw) | 59 (44) | 59 (44) | |
| | 45 | Torque @ Rated RPM | ft Lbs (kg/m) | 121 (16.7) @ 2000 RPM | | |
| | 46 | Number of Cylinders / Displacement | No / cc (ci) | 4/2351 (143) | 4/2491 (152) | |
| | 47 | Transmission Type, Standard | | Electronic Powershift | | |
| | | Standard Speeds, Forward - Reverse | | 1-1 | | |
| | 49 | Hydraulic Tank Capacity (Drain and Refill) | gal (liter) | 9.5 (36.1) | | |
| | 50 | Fuel Tank Capacity (Dual Fuel - Gasoline) | gal (liter) | NA | 10.7 (40.5) | NA |
| | 51 | Auxiliary Hydraulic Pressure Relief for Attachments | PSI (Mpa) | 2250 (15.4) | | |

NOTE: Above specifications, unless otherwise listed, are for a standard truck without optional equipment. Right Angle Stack and Equal Intersecting Aisle are calculated using a 40" wide pallet.

CERTIFICATION: These Hyster® lift trucks meet design specifications of Part II ANSI B56.1-1969, as required by OSHA Section 1910.178(a)(2) and also comply with Part III ANSI B56.1-revision in effect at time of manufacture. Certification of compliance with the applicable ANSI standards appears on the lift truck. Performance specifications are for a truck equipped as described under Standard Equipment on this Technical Guide. Performance specifications are affected by the condition of the vehicle and how it is equipped, as well as by the nature, condition of the operating area, proper service and maintenance of the vehicle. If these specifications are critical, the proposed application should be discussed with your dealer.

S60-70FT SPECIFICATIONS

| GENERAL | 1 | Manufacturer Name | Hyster Company | | | | | |
|---------|----|---|-----------------------|-----------------------|----------------------|------------------------|-----------------------|-----|
| | 2 | Model | S60FT | | | S70FT | | |
| | 3 | Engine | PSI 2.4L | Kubota 2.5L | | PSI 2.4L | Kubota 2.5L | |
| | 3 | Rated Capacity | 6000 (2722) | | | 7000 (3175) | | |
| | 4 | Load Center, Distance | 24.0 (610) | | | | | |
| | 5 | Power Type | LPG | Dual Fuel | LPG | LPG | Dual Fuel | LPG |
| | 6 | Operator Type | Sit-Down Rider | | | | | |
| | 7 | Step Height | 13.8 (350) | | | | | |
| | 8 | Tire Type - Cushion, Solid, Pneumatic | Cushion | | | | | |
| | 9 | Wheels, Number - Front / Rear | 2x/2 | | | | | |
| | 10 | Lift Height, Top of Fork (TOF) | 126 (3209) | | | | | |
| | 11 | Lift Heights, Std. Limited Free Lift (LFL) w/o LBR (TOF) | 5 (150) | | | | | |
| | | Lift Heights, Optional Full Free Lift (FFL) w/o LBR (TOF) | 58 (1490) | | | | | |
| | 12 | Standard Carriage Width | 38.5 (980) | | | | | |
| | 13 | Forks, Thickness x Width x Length | 2.0 X 4.9 X 42 | | | | | |
| | | Forks, Thickness x Width x Length | (50 X 125 X 1067) | | | | | |
| | 14 | Fork Spread, Outside Dimensions | 38.3 (974) | | | | | |
| | 15 | Mast Tilt Angles, Forward / Backward | 5F/5B | | | | | |
| | 16 | Length To Face of Forks | 93.4 (2373) | | | 95.6 (2429) | | |
| | 17 | Overall Width, Standard Tread | 43.6 (1108) | | | 45.6 (1158) | | |
| | | Overall Width, Wide Tread | 48.9 (1242) | | | | | |
| | 18 | Height, Standard Mast - Lowered | 87 (2185) | | | | | |
| | 19 | Height, Standard Mast - Extended with LBR | 175 (4435) | | | | | |
| | | Height, Standard Mast - Extended without LBR | 152 (3855) | | | | | |
| | 20 | Height, Standard Overhead Guard | 84 (2128) | | | | | |
| | | Height, Optional Overhead Guard | 82 (2061) | | | | | |
| | 21 | Turning Radius, Minimum Outside (OTR) | 81.3 (2066) | | | | | |
| | 22 | Length, Center of Wheel to Face of Forks | 15.8 (402) | | | 15.8 (402) | | |
| | 23 | Aisle Width, Right Angle Stack (Add Length of Load) | 97.2 (2468) | | | 99.3 (2521) | | |
| | 24 | Equal Aisle, 90-Degree Intersecting Aisle | 76.5 (1943) | | | 78.2 (1986) | | |
| | 25 | Travel Speed, Powershift Transmission RL/NL | 10.6/11.2 (17.0/18.0) | 11.1/11.2 (17.8/18.0) | | 10.6/11.2 (17.0/18.0) | 11.1/11.2 (17.8/18.0) | |
| | 26 | Lift Speed, Standard 2-Stage LFL RL/NL | 104 /108 (.53/.55) | 108 /110 (.55/.56) | | 104 /108 (.53/.55) | 110 /110 (.56/.56) | |
| | | Lift Speed, Optional 2-Stage FFL RL/NL | 102/106 (.52/.54) | 104/106 (.53/.54) | | 102/106 (.52/.54) | 104/106 (.53/.54) | |
| | | Lift Speed, Optional 3-Stage FFL RL/NL | 100 /104 (.51/.53) | 100/104 (.51/.53) | | 100 /104 (.51/.53) | 102/104 (.52/.53) | |
| | | Lift Speed, Optional 4-Stage FFL RL/NL | 120/124 (.61/.63) | 122/126 (.62/.64) | | N/A | | |
| | 27 | Lowering Speed, Standard 2-Stage LFL RL/NL | 104/93 (.53 /.47) | | | 104/93 (.53 /.47) | | |
| | | Lowering Speed, Optional 2-Stage FFL RL/NL | 98/83 (.50 /.42) | | | 98/83 (.50 /.42) | | |
| | | Lowering Speed, Optional 3-Stage FFL RL/NL | 114/95 (.58 /.48) | | | 114/95 (.58 /.48) | | |
| | | Lowering Speed, Optional 4-Stage FFL RL/NL | 108/73 (.55 /.37) | | | N/A | | |
| | 28 | Maximum drawbar pull RL/NL | 5234/1821 (2374/826) | | 4597/1821 (2085/826) | | 5172/1709 (2346/775) | |
| | | Drawbar Pull, Standard Transmission @ 1 mph RL/NL | 4372/1821 (1983/826) | | 3968/1821 (1800/826) | | 4321/1709 (1960/775) | |
| | 29 | Gradeability, Standard Transmission @ 1 mph RL/NL | 28/19 | | 25/19 | | 25/17 | |
| | 31 | Weight, Standard Truck (2-Stg. LFL) NL | 9768 (4431) | | | 10535 (4779) | | |
| | | Weight, Standard Truck (2-Stg. LFL) RL | 15767 (7152) | | | 17535 (7954) | | |
| | 32 | Axle Loading, Static Front / Rear NL | 3474/6294 (1576/2855) | | | 3269/7266 (1483/3296) | | |
| | | Axle Loading, Static Front / Rear RL | 13718/2049 (6222/929) | | | 15221/2314 (6904/1050) | | |
| | 33 | Tire Size, Front | 21 X 8 x 15 | | | | | |
| | 34 | Tire Size, Rear | 16 x 6 x 10.5 | | | | | |
| | 35 | Wheelbase | 56.3 (1430) | | | | | |
| | 37 | Ground Clearance, Lowest Point NL (w/RL subtract 6mm) | 3.6 (91) | | | | | |
| | 38 | Ground Clearance, Center of Wheelbase NL | 4.9 (125) | | | | | |
| | 39 | Service Brake - Method of Control / Operation | Foot/Hydraulic | | | | | |
| | 40 | Parking Brake - Method of Control / Operation | Hand/Mechanical | | | | | |
| | 41 | Battery Type | Maintenance Free | | | | | |
| | 42 | Volts / Cold Cranking Amps | 12/475 | | | | | |
| | 43 | Engine, Manufacturer / Model | PSI 2.4L | Kubota 2.5L | | PSI 2.4L | Kubota 2.5L | |
| | 44 | Permanent Output | 59 (44) | | | 59 (44) | | |
| | 45 | Torque @ Rated RPM | 121 (16.7) @ 2000 RPM | | 131 (18) @ 1000 RPM | | 121 (16.7) @ 2000 RPM | |
| | 46 | Number of Cylinders / Displacement | 4/2351 (143) | | 4/2491 (152) | | 4/2351 (143) | |
| | 47 | Transmission Type, Standard | Electronic Powershift | | | | | |
| | | Standard Speeds, Forward - Reverse | 1-1 | | | | | |
| | 49 | Hydraulic Tank Capacity (Drain and Refill) | 9.5 (36.1) | | | | | |
| | 50 | Fuel Tank Capacity (Dual Fuel - Gasoline) | NA | 10.7 (40.5) | | NA | 10.7 (40.5) | |
| | 51 | Auxiliary Hydraulic Pressure Relief for Attachments | 2250 (15.4) | | | | | |

NOTE: Above specifications, unless otherwise listed, are for a standard truck without optional equipment.

Right Angle Stack and Equal Intersecting Aisle are calculated using a 40" wide pallet.

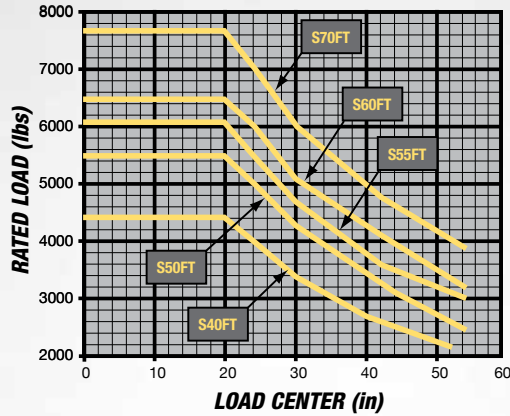
CERTIFICATION: These Hyster® lift trucks meet design specifications of Part II ANSI B56.1-1969, as required by OSHA Section 1910.170(a)(2) and also comply with Part III ANSI B56.1-revision in effect at time of manufacture. Certification of compliance with the applicable ANSI standards appears on the lift truck. Performance specifications are for a truck equipped as described under Standard Equipment on this Technical Guide. Performance specifications are affected by the condition of the vehicle and how it is equipped, as well as by the nature, condition of the operating area, proper service and maintenance of the vehicle. If these specifications are critical, the proposed application should be discussed with your dealer.

RATED CAPACITIES

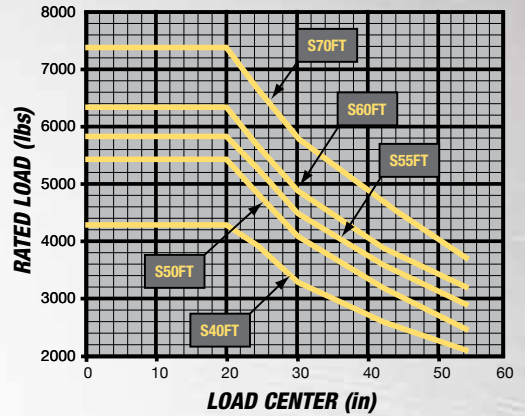
TRUCK CONFIGURATION:

- 3-stage FFL mast at highest non-highlift (HNHL) 171.0" (4350 mm) maximum fork height (MFH) for S40-50FT and 164.0" (4170 mm) for S60-70FT.
- 42.0" (1067 mm) standard carriage with load backrest (LBR).
- Basic truck equipped with the PSI 2.4L LPG engine with one-speed electronic powershift transmission.

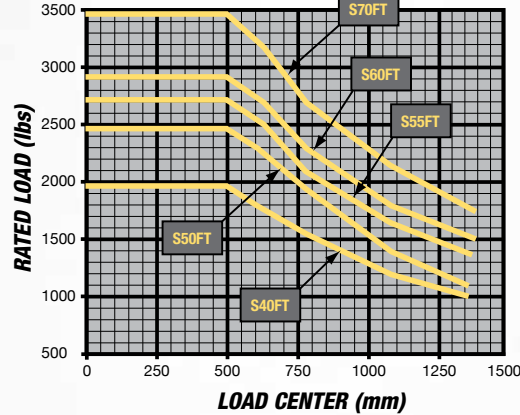
**RATED LOAD vs. LOAD CENTER
STANDARD CARRIAGE
U. S. CUSTOMARY**



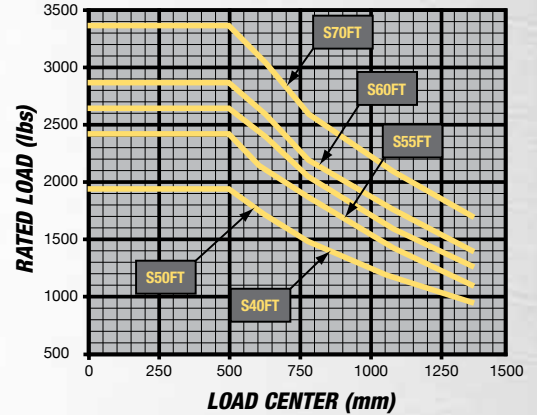
**RATED LOAD vs. LOAD CENTER
INTEGRAL SIDESHIFT ATTACHMENT
U. S. CUSTOMARY**



**RATED LOAD vs. LOAD CENTER
STANDARD CARRIAGE
METRIC**



**RATED LOAD vs. LOAD CENTER
INTEGRAL SIDESHIFT ATTACHMENT
METRIC**



S40-55FT MAST DIMENSIONS

| Maximum Fork Height (TOF) † | Overall Lowered Height | Overall Extended Height | | Free Lift (TOF) without LBR* | Approximate Total Weight of Standard Equipped Truck w/o Load | | |
|---|------------------------|-------------------------|-------------|------------------------------|--|-------------|--------------|
| | | with LBR | without LBR | | S40FT | S50FT | S55FTS |
| in (mm) | in (mm) | in (mm) | in (mm) | in (mm) | lbs (kg) | lbs (kg) | lbs (kg) |
| 2-STAGE LIMITED FREE LIFT (LFL) VISTA™ PLUS MAST | | | | | | | |
| 82 (2092) | 61 (1535) | 131 (3315) | 104 (2650) | 5 (140) | 7596 (3445) | 8380 (3801) | 8906 (4040) |
| 129 (3292) | 85 (2135) | 178 (4515) | 151 (3840) | 5 (140) | 7803 (3539) | 8587 (3895) | 9133 (4134) |
| 2-STAGE FULL FREE LIFT (FFL) VISTA™ MAST | | | | | | | |
| 130 (3302) | 85 (2135) | 179 (4525) | 152 (3860) | 62 (1575) | 7840 (3556) | 8624 (3912) | 9150 (4150) |
| 3-STAGE FULL FREE LIFT (FFL) VISTA™ PLUS MAST | | | | | | | |
| 171 (4350) | 77 (1935) | 220 (5575) | 193 (4890) | 54 (1395) | 8085 (3668) | 8869 (4023) | 9395 (4262) |
| 189 (4800) | 83 (2085) | 238 (6025) | 210 (5340) | 60 (1545) | 8160 (3702) | 8944 (4057) | 9470 (4296) |
| 194 (4950) | 85 (2135) | 244 (6175) | 216 (5490) | 62 (1595) | 8185 (3713) | 8969 (4069) | 9495 (4307) |
| 200 (5100) | 88 (2235) | 249 (6325) | 222 (5640) | 66 (1695) | 8234 (3735) | 9018 (4090) | 9544 (4329) |
| 218 (5550) | 94 (2385) | 267 (6775) | 240 (6090) | 84 (2145) | 8314 (3771) | 9098 (4127) | 9624 (4365) |
| 4-STAGE FULL FREE LIFT (FFL) VISTA™ MAST** | | | | | | | |
| 240 (6095) | 84 (2135) | 289 (7321) | 262 (6641) | 59 (1513) | 8694 (3944) | 9478 (4299) | 10004 (4538) |
| 276 (7013) | 96 (2437) | 322 (8184) | 298 (7556) | 71 (1817) | 8889 (4032) | 9673 (4388) | 10199 (4626) |

† Lift heights over 171.5" (4356 mm) maximum fork height are considered highlifts and require reduced capacity and restricted back tilt.

* On 2-stage FFL and 3-stage FFL mast, subtract 26" (665 mm) if Load Backrest (LBR) is used.

** Lift trucks equipped with the 4-stage FFL mast require Class II carriage and forks.

STANDARD FEATURES AND OPTIONS

STANDARD EQUIPMENT

Complete truck equipped with:

- PSI 2.4L LPG emissions compliant engine
- Basic electronic powershift transmission
 - Electronic inching
 - Electronic shift control
 - Neutral start switch
 - Anti-restart protection
- MONOTROL® pedal
- 2-stage limited free lift VISTA™PLUS mast with maximum fork height of 129" (3277 mm) (S40-50FT, S55FTS) or 126" (3209 mm) (S60-70FT)
- 38.5" (978 mm) wide hook-type carriage with load backrest
- 42" (1067 mm) long forks
- 5 degrees forward / 5 degrees backward mast tilt
- 3-function hydraulic control valve
- Hydraulic power steering (hydrostatic)
- Non-suspension vinyl seat
- Electronic horn
- Infinitely adjustable steer column
- Rubber floor mat
- High air intake
- Integral tie downs
- Operator restraint system with non-cinch ELR seat belt
- Square-wave, anti-clog radiator

- Single pedal inch brake
- Integrated dashboard display includes:
 - LCD Display:
 - Fuel level
 - Hour meter
 - Coolant temperature
 - Messages
 - Service Indicator Lights:
 - Alternator
 - Transmission oil temperature
 - Engine oil pressure
 - Brake fluid level
 - Fasten seat belt
 - Low fuel level
 - Engine malfunction
 - System malfunction
 - Park brake
 - Coolant temp
 - Forward & reverse direction
 - Neutral
- Hyster Stability System (HSS®)
- Cowl-mounted hydraulic hand levers
- Swing-out LPG tank bracket
- 84" (2128 mm) overhead guard
- 12 months / 2,000 hours manufacturer's warranty
- 24 months / 4,000 hours manufacturer's powertrain warranty
- Operator's manual
- UL Classification LP

OPTIONAL EQUIPMENT

- PSI 2.4L dual fuel engine
- Kubota 2.5L LPG engine
- DuraMatch™ transmission
 - Auto Deceleration System
 - Controlled power reversal feature
 - Controlled rollback on ramps
- Powertrain protection system
- Premium electronic monitoring
- High air intake with precleaner
- Accumulator
- Keyless start (with auxiliary key switch)
- Halogen or LED drive and rear work lights
- Heavy duty radiator with combi-cooler
- Paper applications kit
- Integral sideshifting fork positioner
- Vented hood
- Swing-out, drop-down EZXchange LPG tank bracket
- TouchPoint electro-hydraulic controls with fully adjustable armrest
- Return-to-set tilt
- Rear drive handle with horn button
- Full-suspension seat - vinyl or cloth
- Swivel full-suspension seat - vinyl or cloth
- High-visibility non-cinch seat belt with or without interlock
- Dual inch brake pedals
- Password protection
- Low height overhead guard 82" (2061 mm)
- Audible alarm - reverse activated 82-102 dB(A) - self-adjusting
- Visible alarm amber strobe light - continuous activated, OHG mounted
- Various light packages
 - Two front and one rear halogen or LED work lights
 - Two front, one rear halogen or LED work lights and two LED brake/tail/back-up lights
- UL Classification LPS or LPS/GS
- Operator pre-shift checklist
- Impact monitor
- Load weight display
- Dual side view mirrors
- Integral sideshifter

S60-70FT MAST DIMENSIONS

| Maximum Fork Height (TOF) † | Overall Lowered Height | Overall Extended Height | | Free Lift (TOF) without LBR* | Approximate Total Weight of Standard Equipped Truck w/o Load | |
|--|------------------------|-------------------------|-------------|------------------------------|--|--------------|
| | | with LBR | without LBR | | S60FT | S70FT |
| in (mm) | in (mm) | in (mm) | in (mm) | in (mm) | lbs (kg) | lbs (kg) |
| 2-STAGE LIMITED FREE LIFT (LFL) VISTA™PLUS MAST | | | | | | |
| 126 (3209) | 86 (2185) | 175 (4435) | 152 (3855) | 5 (150) | 9768 (4431) | 10535 (4779) |
| 2-STAGE FULL FREE LIFT (FFL) VISTA™ MAST | | | | | | |
| 122 (3110) | 85 (2135) | 171 (4335) | 148 (3755) | 58 (1490) | 9785 (4438) | 10552 (4787) |
| 130 (3310) | 88 (2235) | 179 (4535) | 156 (3955) | 62 (1590) | 9822 (4455) | 10589 (4803) |
| 3-STAGE FULL FREE LIFT (FFL) VISTA™PLUS MAST | | | | | | |
| 181 (4618) | 85 (2135) | 231 (5845) | 207 (5245) | 59 (1505) | 10128 (4594) | 10896 (4942) |
| 187 (4768) | 88 (2235) | 236 (5995) | 212 (5395) | 63 (1595) | 10173 (4614) | 10941 (4963) |
| 211 (5368) | 98 (2485) | 260 (6595) | 236 (5995) | 73 (1855) | 10308 (4676) | 11076 (5024) |
| 229 (5818) | 104 (2635) | 278 (7045) | 254 (6445) | 79 (2005) | 10498 (4762) | 11266 (5110) |
| 4-STAGE FULL FREE LIFT (FFL) VISTA™ MAST** | | | | | | |
| 240 (6095) | 84 (2135) | 289 (7321) | 262 (6641) | 59 (1513) | 10486 (4757) | N / A |
| 276 (7013) | 96 (2437) | 322 (8184) | 298 (7556) | 71 (1817) | 10681 (4845) | N / A |

† Lift heights over 164.0" (4166 mm) maximum fork height are considered highlifts and require reduced capacity and restricted back tilt.

* On 2-stage FFL and 3-stage mast, subtract 23" (585 mm) if Load Backrest (LBR) is used.

** Lift trucks equipped with the 4-stage FFL mast require Class II carriage and forks.

STANDARD FEATURES AND OPTIONS

CAPACITY:

Model S40FT: 4000 lbs. at 24" (1814 kg at 610 mm) load center.
Model S50FT: 5000 lbs. at 24" (2268 kg at 610 mm) load center.
Model S55FTS: 5500 lbs. at 24" (2495 kg at 610 mm) load center.
Model S60FT: 6000 lbs. at 24" (2721 kg at 610 mm) load center.
Model S70FT: 7000 lbs. at 24" (3175 kg at 610 mm) load center.

Rated capacities are for trucks equipped with:

- 3-stage full free lift VISTA™PLUS mast to 171.5" (4356 mm) maximum fork height for S40-50FT, S55FTS or 164" (4166 mm) for S60-70FT.
- 38.5" (978 mm) hook-type carriage with 42" (1067 mm) long forks as required for S40-50FT, S55FTS or 48" (1219 mm) for S60-70FT.
- 48" load backrest (LBR)

MASTS

Masts are available in 2-stage or 4-stage full free lift (FFL) VISTA™, 2-stage limited free lift (LFL) VISTA™PLUS, and 3-stage full free lift (FFL) VISTA™PLUS. Masts feature flush-faced, nested-channel design and full-radius, angled load rollers.

CARRIAGE

Carriages are hook-type, ITA Class II mounting (S40-50FT, S55FTS), ITA Class III (S60-70FT). Overall width without load backrest (LBR) is 38.5" (978 mm); with LBR is 39.72" (1009 mm). Minimum inside-to-inside fork spacing is 0.12" (3 mm). Maximum outside-to-outside fork spacing is 38.33" (974 mm).

FORKS

S40-50FT, S55FTS lift trucks feature: 1.6" x 3.9" x 36" to 60" (40 x 100 x 914 to 1525 mm) long pallet forks.
S60-70FT lift trucks feature: 2" x 4.9" x 36" to 72" (50 x 125 x 915 to 1830 mm) long pallet forks.
Polished and tapered forks are also available.

ENGINES

Two emissions compliant engines are available for the S40-70FT models: the PSI 2.4L and Kubota 2.5L engines.

PSI 2.4L LPG emissions compliant engines feature:

- 4-cyl. overhead valve and overhead camshaft design
- Cast iron block, aluminum cylinder head
- Electronically controlled fuel systems
- Individual coil over plug ignition units which eliminate the need for spark plug wires
- Spin-on full flow oil filter
- Electronic governor
- Heavy duty air cleaner with pre-cleaner
- Engine Control Unit (ECU)
- Three-way catalytic converter exhaust system
- Hyster® Variable Power Technology™ featuring three performance modes
- Hydraulic filters
- Twin balance shafts
- 2.4L LPG engine produces 59 hp

Kubota 2.5L LPG emissions compliant engine features:

- Diesel engine architecture with a long cylinder stroke for more torque
- Cast iron cylinder head and block extends past centerline of the crankshaft for strength and resistance to shock
- Maintenance free internal drive gear train, maintaining engine timing
- Individual coil over plug ignition units which eliminate the need for spark plug wires
- Crossflow cylinder head with intake and exhaust ports on opposite sides of the head for efficiency and power
- Three-way catalytic converter
- Hyster® Variable Power Technology™ featuring three performance modes
- 500-hour service intervals
- 2.5L engine produces 59 horsepower

TRANSMISSION

- Electronic Powershift: Single range powershift, electronic inching (requires no adjustment), electronic shift control, neutral start switch, and anti-restart protection.
- DuraMatch™: All of the features of the standard electronic transmission plus Auto Deceleration System, controlled power reversal, controlled rollback on ramps.

COOLING SYSTEM

- Multiple cooling system designs, depending on engine and transmission configuration:
 - Square-wave anti-clog
 - Heavy duty square-wave anti-clog
- Square-wave anti-clog combi-cooler
- All radiators utilize cross-flow aluminum cores, pusher type fans and permanently lubricated water pump
- "Knife-edge" type fan shrouds that direct air flow through the counterweight air passages
- 15 psi operating system pressure
- Combi-cooler contains an externally mounted transmission oil cooler to aid in heat dissipation

HYDRAULIC SYSTEM

- Manual hydraulic control valve & touchpoint electro-hydraulic control valve systems
- S40-60FT, S55FTS: hydraulic lift system operates at 3,100 psi (21.4 Mpa)
 - S70FT: hydraulic lift system operates at 3400 psi (23.4 Mpa)
 - Tilt and auxiliary systems have 2250 psi (15.5 Mpa) relief pressure in all valve variations
 - Hydraulic system is protected by a replaceable ten micron paper element in-tank filter assembly
 - Hydraulic breather filter includes an anti-splash baffle and is rated at 3-micron absolute
 - 100 mesh suction line strainer
 - O-ring face seal fittings with captive O-ring grooves are used on all high pressure connections
 - Emergency lowering valve allows load to be lowered in the event of battery power loss

ELECTRICAL SYSTEM

- CANbus control system simplifies truck wiring and enhances truck dependability
- IP66 sealed automotive style electrical connectors
- Standardized wire routing, all wires are color coded, and marked with numbers for easy identification

- Vehicle System Manager (VSM) directly or indirectly controls all electrical functions except those controlled by the Engine Control Unit (ECU)
- 12-volt maintenance free battery provides 475 cold cranking amps
- Onboard diagnostics monitoring and feedback

STEER AXLE / STEER SYSTEM

- Equal-area, double-ended, hydrostatic steering cylinder is mounted in cast ductile iron axle frame
- Elastomeric axle mounts absorb shock and allow lubrication free articulation
- Axle assembly utilizes synthetic boots and seals to retain lubricants and shield components against destructive grit and reduce lube points
- Wheel hubs rotate on large, tapered roller bearings.
- Top spindle bearings lubricated through easy access lube fittings
- Hydrostatic steer system provides smooth, precise steering with only 4 turns lock-to-lock
- Hyster Stability System (HSS®) enhances lateral stability by limiting steer axle articulation without a compromise in uneven surface travel

BRAKES

- Asbestos free, self-energizing, automatically adjusting drum brake assemblies
- Dual circuit master cylinder with sealed fluid reservoir and magnetic fluid level sensor
- Ratchet-type, hand-activated parking brake lever allows controlled application

OPERATOR COMPARTMENT

- Cowl-mounted hydraulic controls
- TouchPoint electro-hydraulic seatside mini-levers (optional)
- Twelve-inch textured steering wheel with hand spinner knob
- Automotive style foot controls with single braking/inching pedal (dual pedals are optional)
- Integrated dashboard display is backlit, allowing easy visibility under all lighting conditions
- Grid-style overhead guard offers superb visibility at extended heights
- Infinitely adjustable tilt steer column
- Optimal 13.8" entry step height on both sides of the truck
- MONOTROL® pedal controls engine speed and truck direction, freeing operator's hands to operate steering and hydraulic levers



Hyster Company
P.O. Box 7006
Greenville, North Carolina
27835-7006
Part No. S40-70FT/TG
1/2015 Litho in U.S.A.

Visit us online at www.hyster.com or call us at 1-800-HYSTER-1.

Hyster and  are registered trademarks of Hyster Company. Hyster products are subject to change without notice.

The Hyster Company products included in this document may be covered by US Patent 6,684,148, and other patents pending. All trucks shown with optional equipment. ©2015 Hyster Company. All rights reserved.