

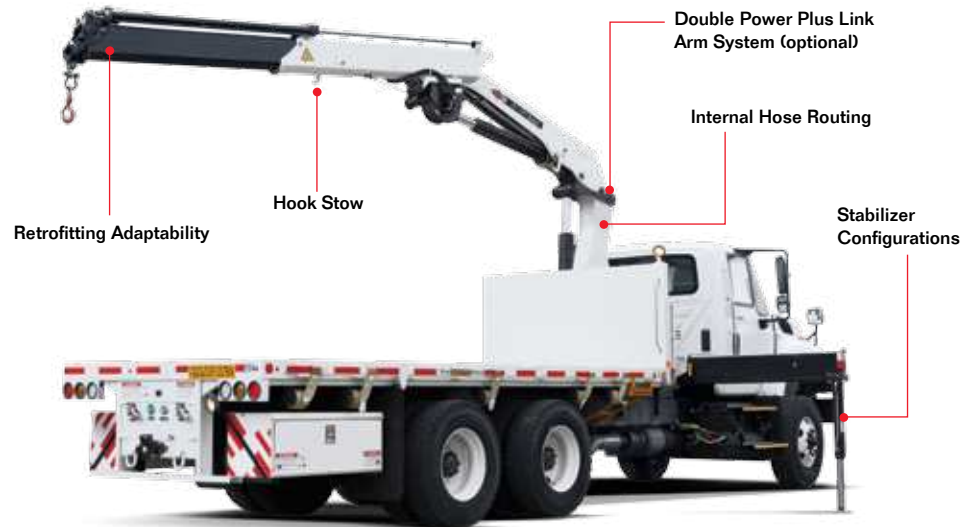
24/169

Articulating Crane



► 24/169 Articulating Crane

IMT® 24/169 articulating cranes have a max lifting capacity of 18,940 lb (8590 kg) SL and 19,355 lb (8780 kg) DL and feature hexagonal booms for greater strength and stability. A max vertical reach of 79 ft 1 in (24.1 m) — as well as increased versatility, durability, and maneuverability — makes these cranes that have the ability to stow within themselves ideal for any job site.



24/169SL Specifications

	2 - Hydraulic	3 - Hydraulic	4 - Hydraulic	5 - Hydraulic	6 - Hydraulic	7 - Hydraulic	8 - Hydraulic
Crane Rating*	164,910 ft-lb (22.8 tm)	161,295 ft-lb (22.3 tm)	156,955 ft-lb (21.7 tm)	154,065 ft-lb (21.3 tm)	150,445 ft-lb (20.8 tm)	148,275 ft-lb (20.5 tm)	145,385 ft-lb (20.1 tm)
Max Horizontal Reach	27' 3" (8.3 m)	33' 10" (10.3 m)	41' (12.5 m)	48' 7" (14.8 m)	56' 5" (17.2 m)	63' 8" (19.4 m)	71' 2" (21.7 m)
Max Vertical Reach	35' 1" (10.7 m)	42' (12.8 m)	49' 3" (15 m)	56' 5" (17.2 m)	64' 4" (19.6 m)	71' 10" (21.9 m)	79' 1" (24.1 m)
Max Capacity	18,940 lb (8590 kg)	17,945 lb (8140 kg)	17,000 lb (7710 kg)	16,160 lb (7330 kg)	15,895 lb (7210 kg)	15,190 lb (6890 kg)	14,485 lb (6570 kg)
Max Cap @ Max Reach	6085 lb (2760 kg)	4565 lb (2070 kg)	3460 lb (1570 kg)	2600 lb (1180 kg)	1920 lb (870 kg)	1475 lb (670 kg)	1125 lb (510 kg)
Crane Weight **	4180 lb (1895 kg)	4555 lb (2065 kg)	4995 lb (2265 kg)	5325 lb (2415 kg)	5635 lb (2555 kg)	5865 lb (2660 kg)	6050 lb (2745 kg)
Hook Approach							
Vertical	7' 3" (2.21 m)	7' 6" (2.29 m)	7' 10" (2.38 m)	8' 1" (2.47 m)	8' 5" (2.56 m)	8' 8" (2.65 m)	9' (2.74 m)
Horizontal	2' 3" (0.69 m)	2' 5" (0.74 m)	2' 7" (0.79 m)	2' 9" (0.84 m)	2' 11" (0.89 m)	3' 1" (0.94 m)	3' 3" (1 m)
Center of Gravity - Stored							
Vertical	2' 6" (770 mm)	2' 7" (785 mm)	2' 8" (815 mm)	2' 9" (835 mm)	2' 9" (845 mm)	2' 10" (875 mm)	2' 11" (890 mm)
Horizontal (C/L Rotation to Bridge)	13.6" (345 mm)	13.4" (340 mm)	12.8" (325 mm)	12.2" (310 mm)	11.8" (300 mm)	11.2" (285 mm)	11" (280 mm)

24/169DL Specifications

	2 - Hydraulic	3 - Hydraulic	4 - Hydraulic	5 - Hydraulic	6 - Hydraulic	7 - Hydraulic	8 - Hydraulic
Crane Rating*	165,635 ft-lb (22.9 tm)	162,020 ft-lb (22.4 tm)	157,680 ft-lb (21.8 tm)	154,785 ft-lb (21.4 tm)	151,170 ft-lb (20.9 tm)	149,000 ft-lb (20.6 tm)	145,385 ft-lb (20.1 tm)
Max Horizontal Reach	27' 3" (8.3 m)	33' 10" (10.3 m)	41' (12.5 m)	48' 7" (14.8 m)	56' 5" (17.2 m)	63' 8" (19.4 m)	71' 2" (21.7 m)
Max Vertical Reach	35' 1" (10.7 m)	42' (12.8 m)	49' 3" (15 m)	56' 5" (17.2 m)	64' 4" (19.6 m)	71' 10" (21.9 m)	79' 1" (24.1 m)
Max Capacity	19,355 lb (8780 kg)	18,585 lb (8430 kg)	17,790 lb (8070 kg)	17,130 lb (7770 kg)	16,470 lb (7470 kg)	15,875 lb (7200 kg)	15,300 lb (6940 kg)
Max Cap @ Max Reach	6085 lb (2760 kg)	4565 lb (2070 kg)	3460 lb (1570 kg)	2600 lb (1180 kg)	1920 lb (870 kg)	1475 lb (670 kg)	1125 lb (510 kg)
Crane Weight **	4365 lb (1980 kg)	4740 lb (2150 kg)	5180 lb (2350 kg)	5510 lb (2500 kg)	5820 lb (2640 kg)	6050 lb (2745 kg)	6240 lb (2830 kg)
Hook Approach							
Vertical	7' 3" (2.21 m)	7' 6" (2.29 m)	7' 10" (2.38 m)	8' 1" (2.47 m)	8' 5" (2.56 m)	8' 8" (2.65 m)	9' (2.74 m)
Horizontal	2' 3" (0.69 m)	2' 5" (0.74 m)	2' 7" (0.79 m)	2' 9" (0.84 m)	2' 11" (0.89 m)	3' 1" (0.94 m)	3' 3" (1 m)
Center of Gravity - Stored							
Vertical	2' 7" (795 mm)	2' 8" (820 mm)	2' 9" (840 mm)	2' 10" (855 mm)	2' 10" (855 mm)	2' 11" (890 mm)	3' (910 mm)
Horizontal (C/L Rotation to Bridge)	13" (330 mm)	12.8" (325 mm)	12.2" (310 mm)	11.8" (300 mm)	11.4" (290 mm)	10.8" (275 mm)	10.6" (270 mm)

* Crane rating (ft-lb) is the rated load (lb) multiplied by the respective distance (ft) from centerline of rotation with all extensions retracted and the inner and outer booms in a horizontal position, per ANSI B30.22. ** Crane weight does not include stabilizers.

Standard Features

- Application-specific product offering
- Superior lift-to-weight ratio
- Long-reach capabilities
- Hexagonal booms for superior reach and maximum control
- Internal hose routing
- 15° overbending on outer boom

Options

- Radio remote control
- Various stabilizer configurations
- Double link arm system
- Boom mounted winch
- Floodlight on outer boom
- Boom tip functions for hydraulic attachments
- Oil cooler

Specifications

Stabilizer Pad Diameter	7" (175 mm)
Crane Storage Height	7' 6" (2295 mm)
Mounting Space^{***}	2' 11" (880 mm)
Rotational Torque	19,990 ft-lb (2.8 tm)
Rotation	400°
Optimum Pump Performance	15.9 gpm (60 L/min)
System Pressure	4785 psi (330 bar)
Oil Reservoir Capacity	23.8 gal (90 L)
Stabilizer Extension Span	
Standard (manual out/hydraulic down) Weight	18' 3" (5575 mm) 640 lb (290 kg)
Option (hydraulic out/hydraulic down) Weight	21' 2" (6455 mm) 805 lb (365 kg)

^{***} Maximum swing clearance radius required is 24" (600 mm) at 7' 10" (2375 mm) from top of chassis frame.

Minimum Chassis Specifications

Front Axle Rating (GAWR)	14,000 lb (6350 kg)
Rear Axle Rating (GAWR)	40,000 lb (18,145 kg)
Resistance to Bending Moment Minimum	2,700,000 in-lb (311,075 kg-m)

Hexagonal Boom Design

A wide hexagonal profile with large bearing surfaces ensures greater strength and stability for horizontal and vertical spans — even when working in extreme positions with long reaches. Plus, it's protected by powdercoat paint that never fades, flakes, or corrodes.



Internal Hose Routing

Fed internally through protective nylon drag chains or roller guides, all hoses are equipped with sturdy, high-pressure swivel couplings to prevent them from twisting.



Overbending

Overbending between the main boom and jib provides greater flexibility when working under power wires and more potential for high lifting in narrow passages. It also lowers the total height when the loader is stowed over the truck body.

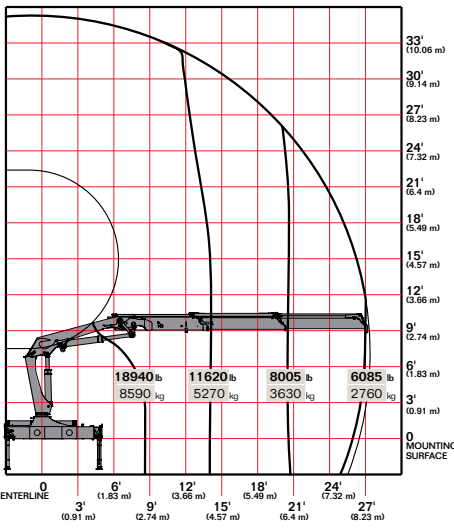


Stow Bracket Innovation

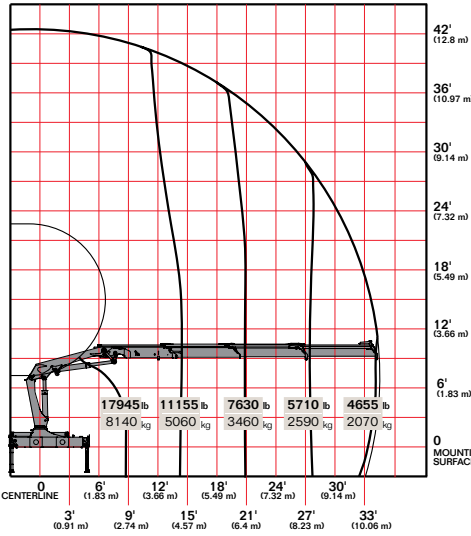
The stow bracket is designed to secure the boom for transport position but not allow for bracket damage. Unlike systems with rigid fixed brackets, the "J" hook will pivot if an incorrect movement is attempted.

▶ 24/169SL Capacity Charts

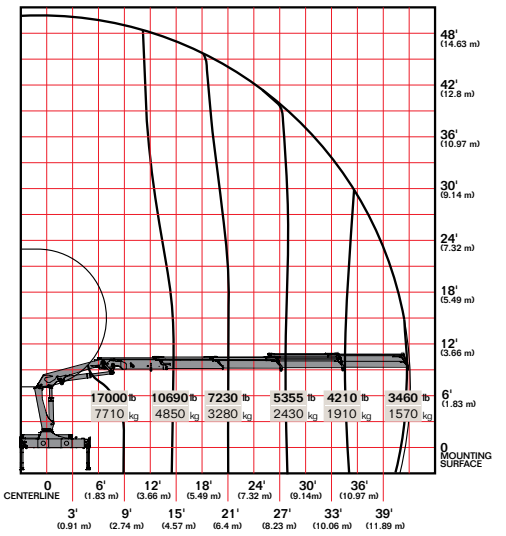
24/169SL K2



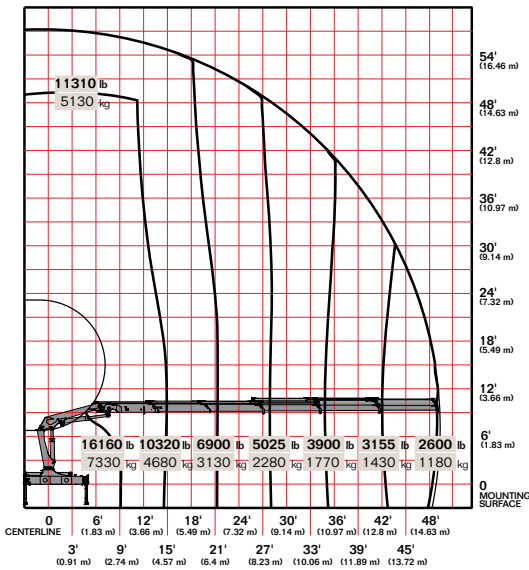
24/169SL K3



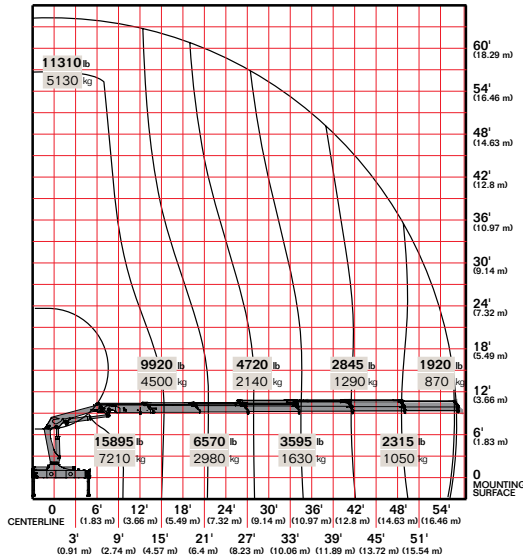
24/169SL K4



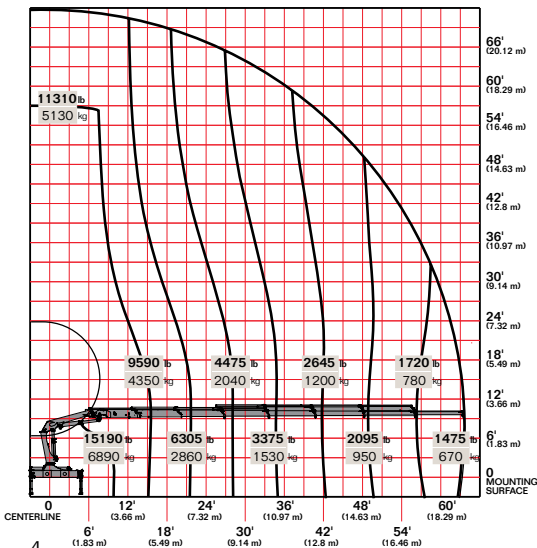
24/169SL K5



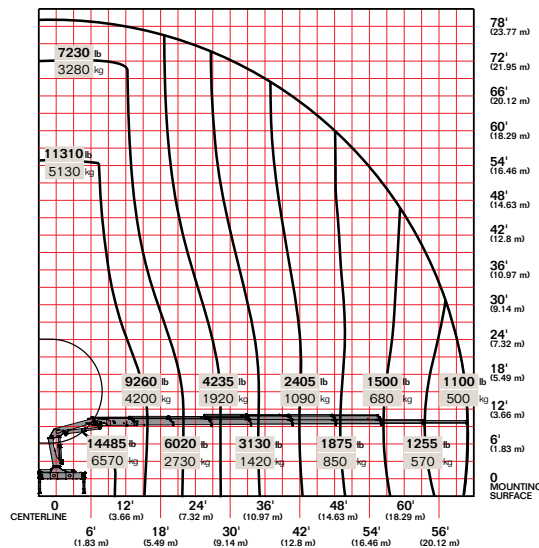
24/169SL K6



24/169SL K7



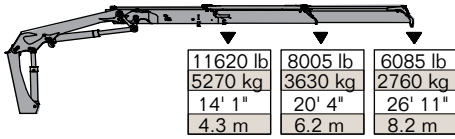
24/169SL K8



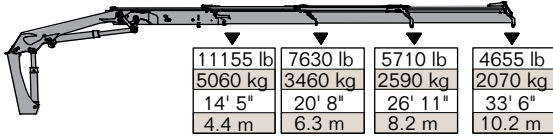
Limit working loads to those shown. Deduct the weight of load-handling devices.

▶ 24/169SL Lifting Capacity

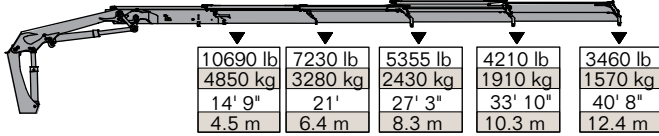
24/169SL - 2 Hydraulic



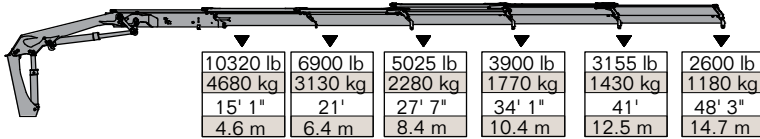
24/169SL - 3 Hydraulic



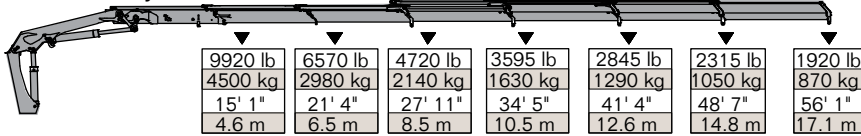
24/169SL - 4 Hydraulic



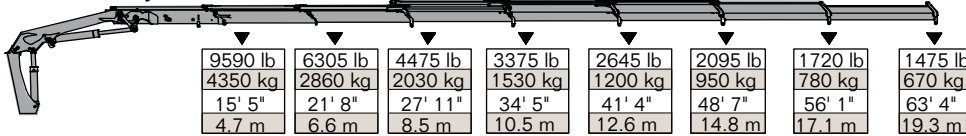
24/169SL - 5 Hydraulic



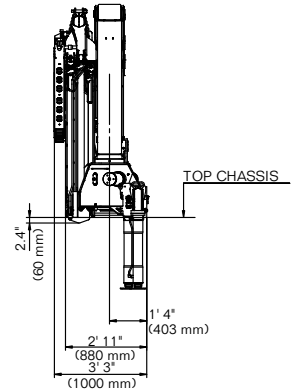
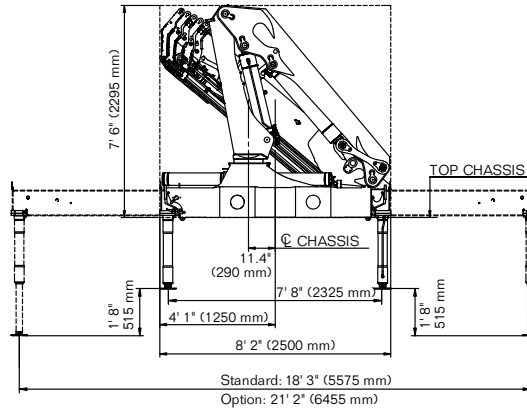
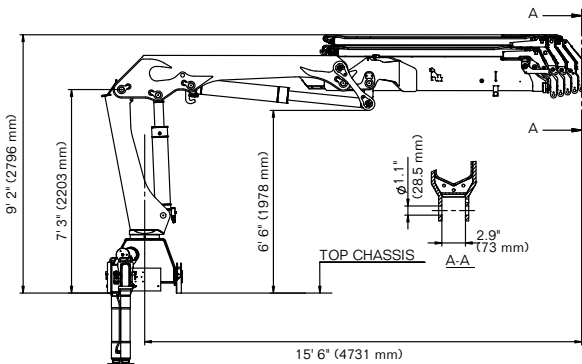
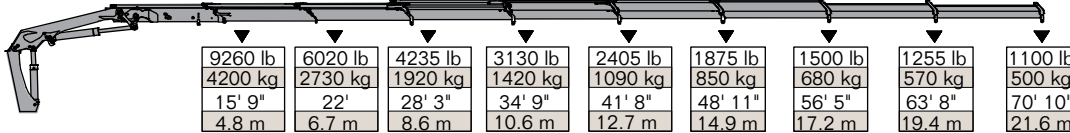
24/169SL - 6 Hydraulic



24/169SL - 7 Hydraulic

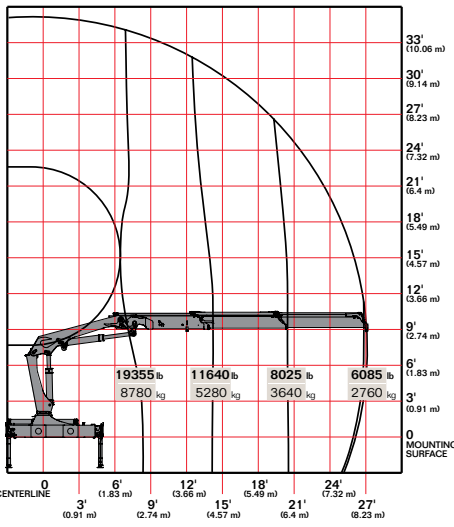


24/169SL - 8 Hydraulic

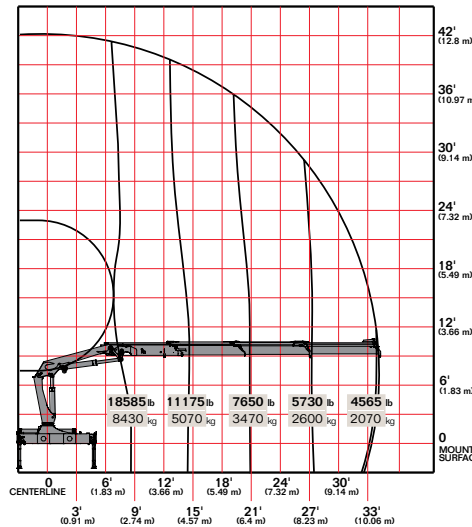


▶ 24/169DL Capacity Charts

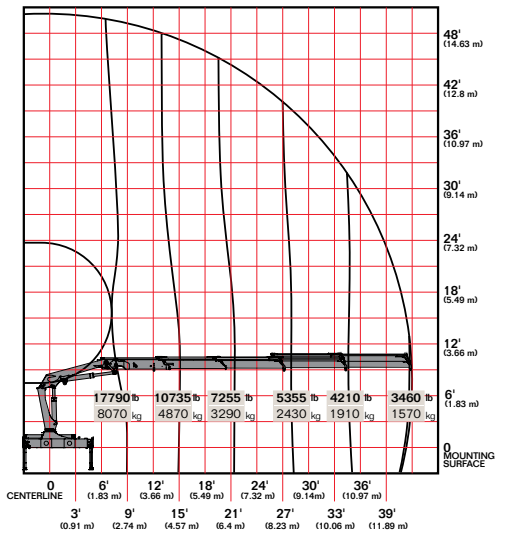
24/169DL K2



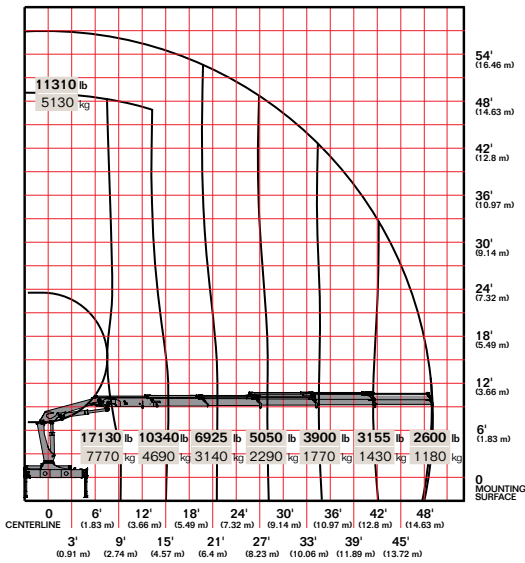
24/169DL K3



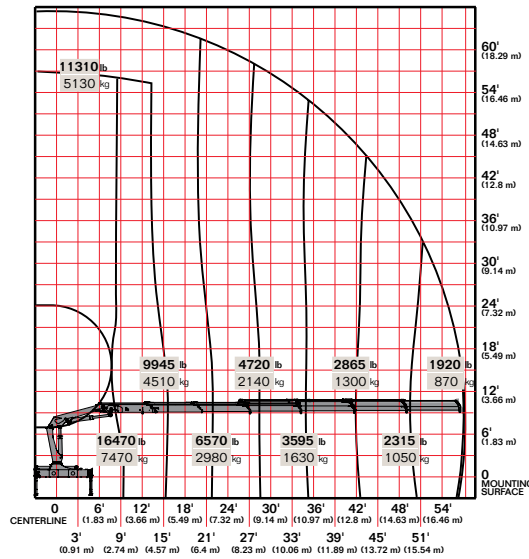
24/169DL K4



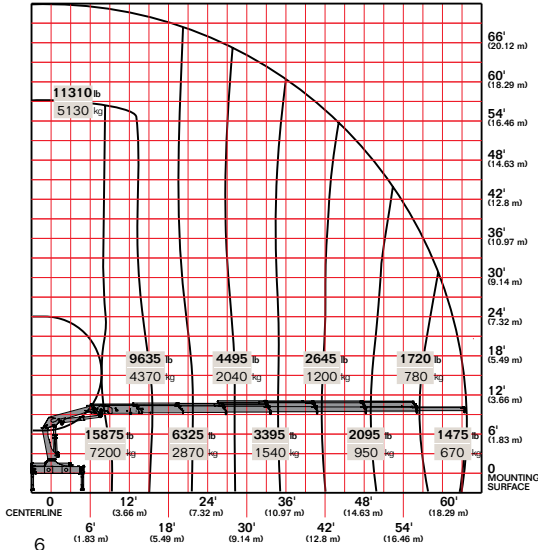
24/169DL K5



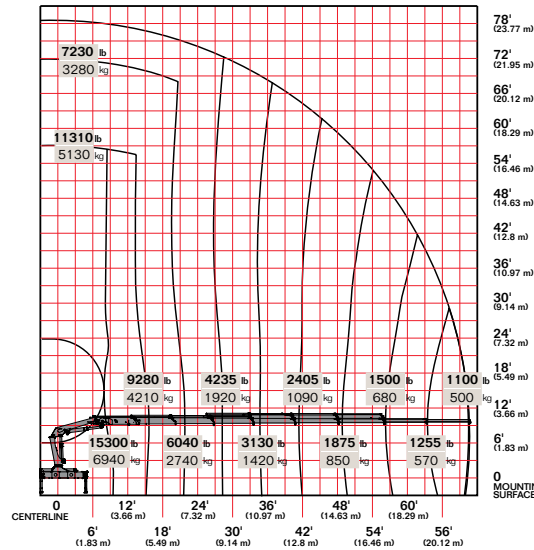
24/169DL K6



24/169DL K7



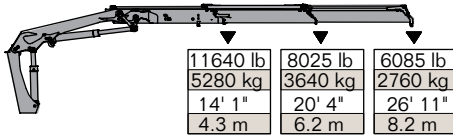
24/169DL K8



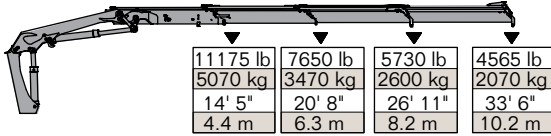
Limit working loads to those shown. Deduct the weight of load-handling devices.

► 24/169DL Lifting Capacity

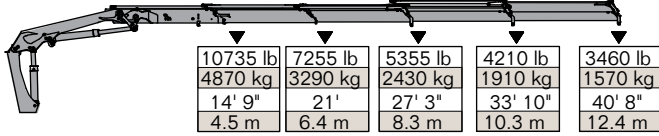
24/169DL - 2 Hydraulic



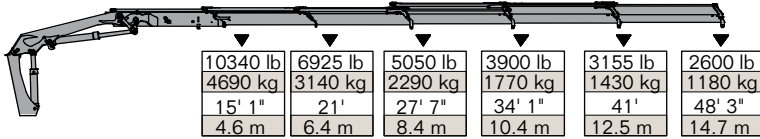
24/169DL - 3 Hydraulic



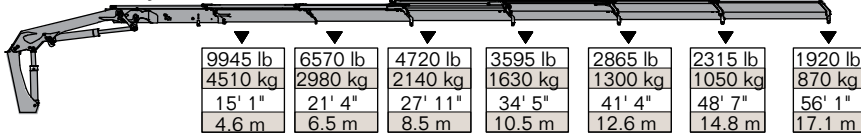
24/169DL - 4 Hydraulic



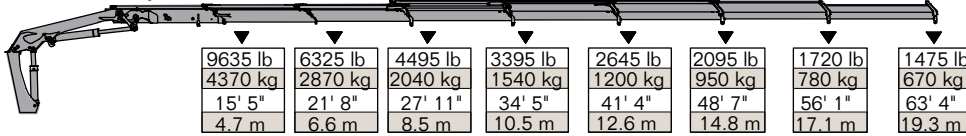
24/169DL - 5 Hydraulic



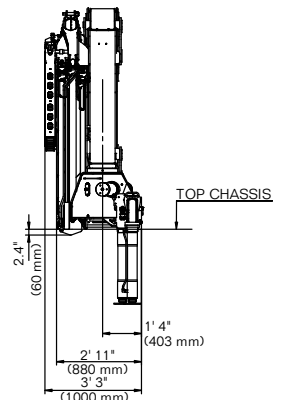
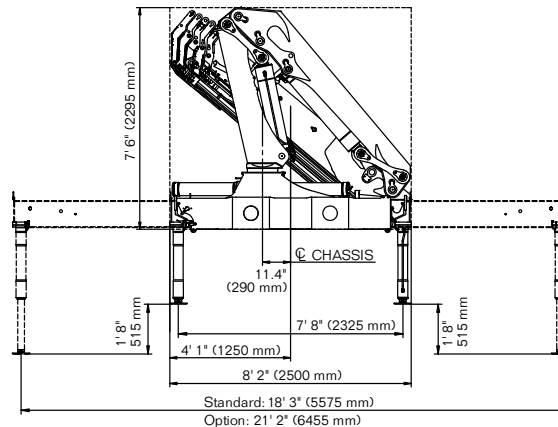
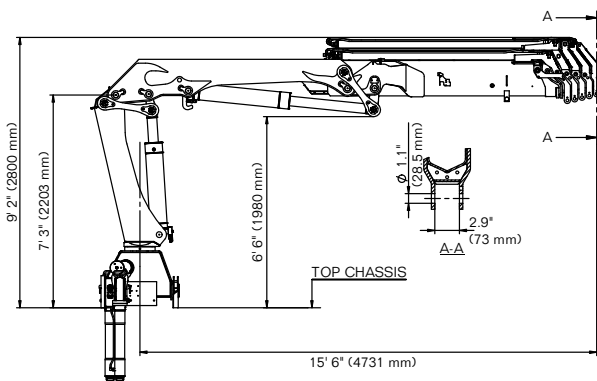
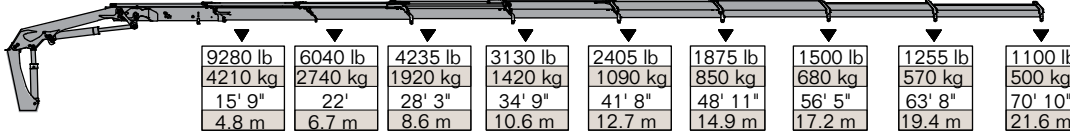
24/169DL - 6 Hydraulic



24/169DL - 7 Hydraulic



24/169DL - 8 Hydraulic



Power Source

- Standard integral-mounted piston hydraulic pump and PTO application

Cylinder Holding Valves

- Integral-mounted counterbalance valves or load-holding check valves
- Prevention of sudden cylinder collapse in case of hose failure

Rotation System

- 400 degree rack and pinion
- 19,990 ft-lb (2.8 tm)
- Counterbalance valve on each cylinder to stop motion in case of hose failure

Hydraulic System

- Open-centered system — closed optional
- Regeneration system on extension cylinder to ensure quick deployment
- Hydraulic oil reservoir, air breather, replaceable return-line filter, and control valve with levers

Overload System

- Load-limiting capability for boom functions
- Rated capacity limitation (RCL) 5300 blocks load-increasing functions when full capacity is attained



Nothing Says Commitment Like The Diamond.™

IMT has been meeting the needs of our customers for over 50 years and none of it would have been possible without a distributor network that's second to none. IMT distributors offer fast, knowledgeable service and the ability to help customers find the right product for every application. When you're looking for reliable equipment and dependable service, remember IMT.



An Oshkosh Corporation Company

Iowa Mold Tooling Co., Inc.
500 Highway 18 West
Garner, Iowa 50438
800-247-5958 • www.imt.com

IMT reserves the right to make changes in engineering, design, and specifications; add improvements; or discontinue manufacturing at any time without notice or obligation. IMT, the IMT logo and NOTHING SAYS COMMITMENT LIKE THE DIAMOND are registered trademarks or trademarks of Iowa Mold Tooling Co., Inc., Garner, IA, USA.
© 2013 Iowa Mold Tooling Co., Inc. All Rights Reserved.