



IOWA MOLD TOOLING CO., INC.

P.O. Box 189
Garner, IA 50438
Tel: 641.923.3711
Fax: 641.923.2424
www.imt.com

Manual # 99906130

610k / 710k Technical Specifications

Revised: March 14, 2017

Copyright © 2017 Iowa Mold Tooling Co., Inc.
All rights reserved

No part of this publication may be reproduced, stored in a retrieval system, or transmitted in any form or by any means, electronic, mechanical, photocopying, recording or otherwise without the prior written permission of Iowa Mold Tooling Co., Inc.

Iowa Mold Tooling Co., Inc. is an Oshkosh Corporation Company

Table of Contents

Section - 1	1
610K-MC Specifications.....	2
610k-MC Specifications - Continued.....	3
610K-MC Metric Specifications - Continued	4
610K MC Specifications.....	5
610K MC Metric Specifications - Continued	6
Section - 2	9
610K-MC Lifting Capacity Chart, K1	10
610K-MC Lifting Capacity Chart, K3	12
610K-MC Lifting Capacity Chart, K4	13
610K-MC Lifting Capacity Chart K1 - K4	14
Section - 3	15
610K-MCS / RC Specifications	16
610-MCS / RC Specifications - Continued.....	17
610K-MCS / RC Metric Specifications	18
610K-MCS / RC Metric Specifications- continued	19
Section - 4	21
610K - MCS/-RC Lifting Capacity Chart, K2	23
610K - MCS/-RC Lifting Capacity Chart, K3	24
610K - MCS/-RC Lifting Capacity Chart, K4	25
610K-MCS/RC Lifting Capacity Chart K1 - K4	26
Section - 5	29
710K - RCS - Specifications	30
710K- RCS Specifications- continued.....	31
710K-RCS Metric Specifications.....	32
710K-RCS Metric Specifications- continued	33
710 RCS Lifting Capacity Chart, K1.....	34
710 RCS Lifting Capacity Chart, K2	35
710 RCS Lifting Capacity Chart, K3.....	36
710 RCS Lifting Capacity Chart, K4.....	37
710K-RCS Lifting Capacity Chart K1 - K4	38
SECTION - 6	41
Dimension Sketch.....	42
Slewing Radius	43
Dimension Sketch For Truck Mounted Loader.....	44
Lifting Height at Column.....	45
Dimension Sketch: Swing-Up Stabilizer Legs (Manual).....	46
Dimension Sketch: Internal Hose Routing	47

610K-MC Technical Specifications

Section - 1

610K-MC Specifications

Performance	Unit	610-K1	610-K2	610-K3	610-K4
Loading group (EN12999)		HC1 / HD4			
Load moment	ft-lb	39771	39048	36879	36155
Hydraulic reach	ft	17'0"	23'3"	29'2"	35'4"
Hydraulic telescopic movement	ft	75	155	237	324
Lifting capacity, hydraulic	lb-ft	3934 - 11'5"	3296 - 11'9"	3131 - 11'8"	2987 - 12'1"
		2326 - 17'0"	2161 - 17'4"	2006 - 17'7"	1885 - 17'7"
			1576 - 23'3"	1455 - 23'3"	1345 - 23'3"
				1146 - 29'2"	1025 - 29'5"
					838 - 35'4"
Lifting capacity, manual extensions	lb-ft	1576 - 23'3"	1146 - 29'1"	838 - 35'4"	717 - 41'7"
Rotational torque, gross	ft-lb	5877			
Rotation angle	°	400	400	400	400
Max. heel at max. load moment	°	5	5	5	5
Rotation speed	°/s	24	24	24	24

Dimensions	Unit	610-K1	610-K2	610-K3	610-K4
Height above chassis	in	72			
Width	in	83			
Length, no extra valves	in	26			
Length, with extra valves (hose guides)	in	29			
Length, with extra valves (int. hose routing)	in	26			
Stabilizer spread, S1 (standard)	ft	11'2"			
Stabilizer spread, S2	ft	14'4"			
Stabilizer spread, D	ft	17'1"			

610k-MC Specifications - Continued

Weights, basic loader	Unit	610-K1	610-K2	610-K3	610-K4
Standard loader 1), excl. stabilizers	lbs	1389	1554	1708	1841
Stabilizers, S1 fixed	lbs			253	
Stabilizers, S1 swing-up	lbs			265	
Stabilizers, S2 fixed	lbs			309	
Stabilizers, S2 swing-up	lbs			319	
Stabilizers, D fixed	lbs			352	
Stabilizers, D swing-up	lbs			363	
Mounting kit, 3 bolts	lbs			99	
Mounting kit, 6 bolts	lbs			121	
Tank, excl. oil (fitted on loader)	lbs			77	
Manual extensions	lbs	88	77	53	39
Oil in loader (stowing position)	lbs	22	26	30	33

1) Weights \pm 5% because of tolerances for plate thickness

Weights, equipment	Unit	610-K1	610-K2	610-K3	610-K4
1 extra valve, hose guides	lbs	88	121	143	165
1 extra valve, int. hose routing	lbs			165	
2 extra valves, hose guides	lbs	132	165	198	231
2 extra valves, int. hose routing	lbs			286	
High-pressure filter	lbs			15	

Max. Load on stabilizers (per stabilizer cylinder)	Unit	610-K1	610-K2	610-K3	610-K4
S1, fixed	Lbf 10 ³			12	
S1, swing-up	Lbf 10 ³			12	
S2, fixed	Lbf 10 ³			12	
S2, swing-up	Lbf 10 ³			12	

Power consumption (oil capacity)	Unit	K1	K2	K3	K4
Working pressure	PSI			4351	
Tank capacity (fitted on loader)	gal			14.5	
Max. pump performance, 1-circuit	gpm			6.6	

This page left intentionally blank

610K MC Metric Specifications

Performance	Unit	K1	K2	K3	K4
Loading group (EN12999)		H1/B3	H1/B3	H1/B3	H1/B3
Load moment	tm	5.5	5.4	5.1	5.0
Hydraulic reach	m	5.2	7.1	8.9	10.8
Hydraulic telescopic movement	mm	1725	3560	5285	7120
Lifting capacity, hydraulic	kg-m	1585-3.5	1495-3.6	1420-3.6	1355-3.7
		1055-5.2	980-5.3	910-5.4	855-5.4
			715-7.1	860-7.1	610-7.1
				520-8.9	465-9.0
					380-10.8
Lifting capacity, manual extensions	kg-m	715-7.1	520-8.9	380-10.8	325-12.7
Slewing torque, gross	kNm	8			
Slewing angle	°	400			
Max. heel at max. load moment	°	5			
Slewing speed	°/s	24			

Dimensions	Unit	K1	K2	K3	K4
Height above chassis	mm	1840	705	775	835
Width	mm	2100			
Length, no extra valves	mm	661			
Length, with extra valves (hose guides)	mm	730			
Length, with extra valves (int. hose routing)	mm	661			
Stabilizer spread, S1 (standard)	mm	3400			
Stabilizer spread, S2	mm	4400			
Stabilizer spread, D	mm	5200			

610K MC Metric Specifications - Continued

Weights, basic loader	Unit	K1	K2	K3	K4
Standard loader 1), excl. stabilizers	kg	630	705	775	835
Stabilizers, S1 fixed	kg	115			
Stabilizers, S1 swing-up	kg	120			
Stabilizers, S2 fixed	kg	140			
Stabilizers, S2 swing-up	kg	145			
Stabilizers, D fixed	kg	160			
Stabilizers, D swing-up	kg	165			
Mounting kit, 3 bolts	kg	45			
Mounting kit, 6 bolts	kg	55			
Tank, excl. oil (fitted on loader)	kg	35			
Manual extensions	kg	40	35	24	18
Oil in loader (stowing position)	kg	10	12	14	15

1) Weights \pm 5% because of tolerances for plate thickness

Weights, equipment		610-K1	610-K2	610-K3	610-K4
1 extra valves, hose guides	kg	40	55	65	75
2 extra valves, hose guides	kg	60	75	90	105
1 extra valve, int. hose routing	kg	75			
2 extra valves, int. hose routing	kg	130			
High-pressure filter	kg	7			

Max. load on stabilizers (per stabilizer cylinder)

S1, fixed	kN	55			
S1, swing-up	kN	55			
S2, fixed	kN	55			
S2, swing-up	kN	55			
Power Consumption / Oil Capacity	Unit	610-K1	610-K2	610-K3	610-K4
Working pressure	Bar	300			
Tank capacity (fitted on loader)	L	55			
Max. pump performance, 1-circuit	L/min	25			

This page left intentionally blank

This page left intentionally blank

610K-MC Lifting Capacity Charts

Section - 2

610K-MC Lifting Capacity Chart, K1

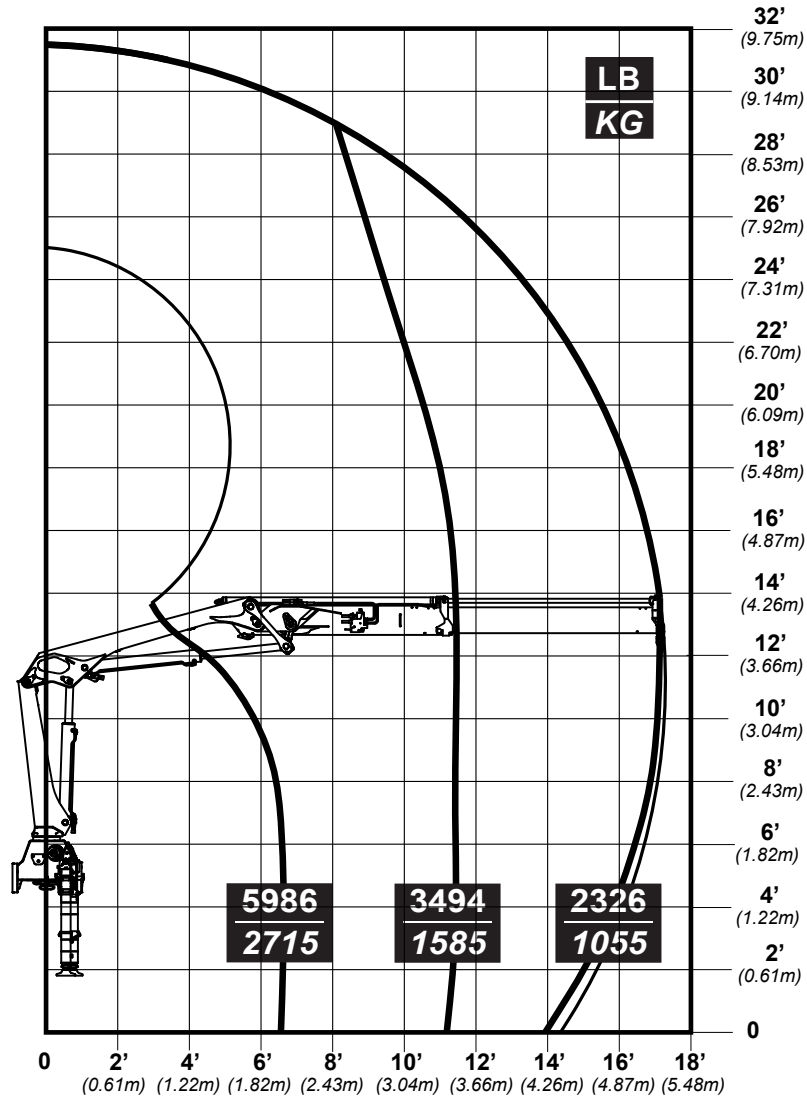
IMT

MATERIAL HANDLING SYSTEMS

IOWA MOLD TOOLING CO., INC.
BOX 189 • GARNER • IA • 50438 • 641-923-3711

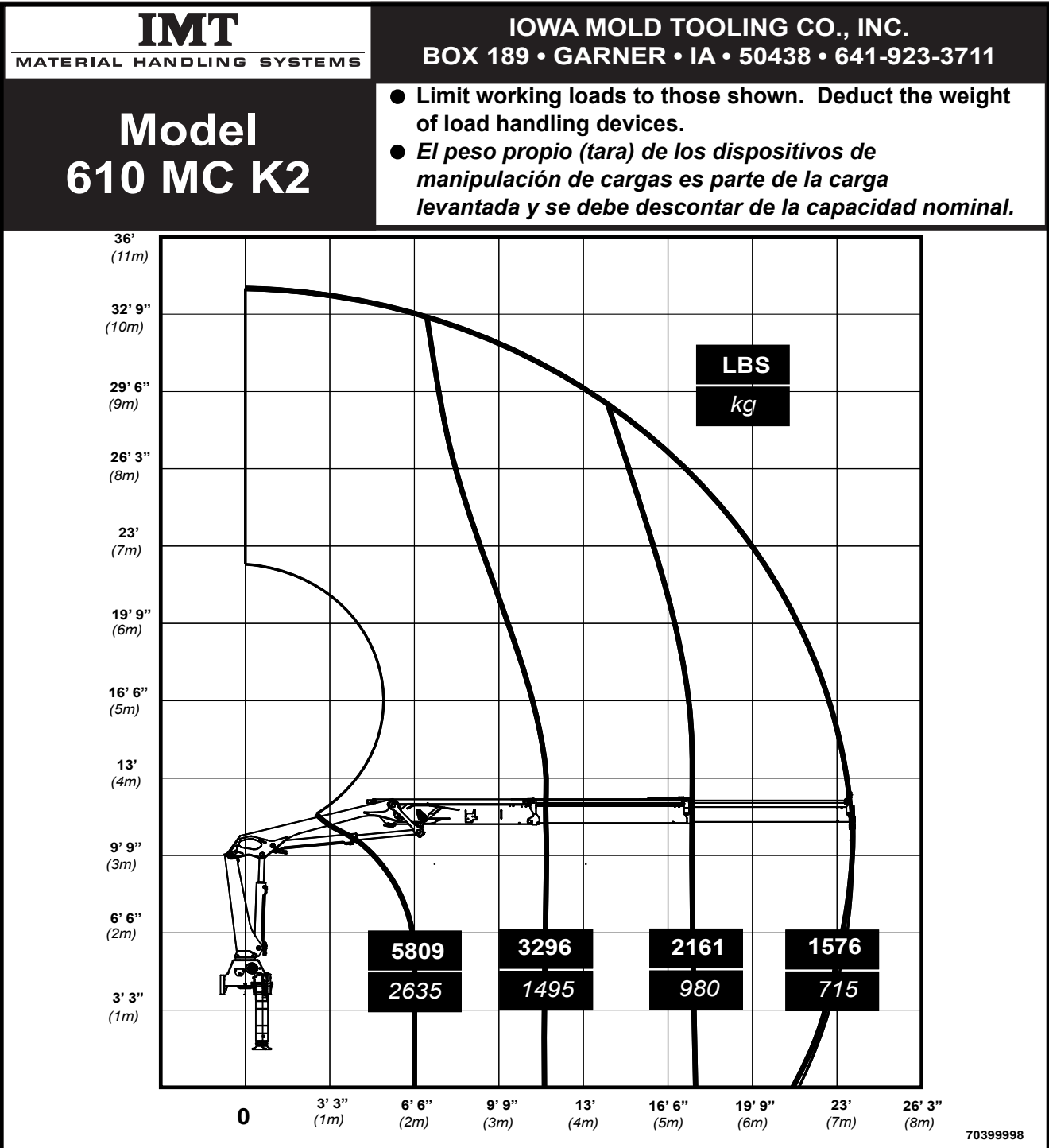
Model 610 MC K1

- Limit working loads to those shown. Deduct the weight of load handling devices.
- *El peso propio (tara) de los dispositivos de manipulación de cargas es parte de la carga levantada y se debe descontar de la capacidad nominal.*



70399992

610K-MC Lifting Capacity Chart, K2



610K-MC Lifting Capacity Chart, K3

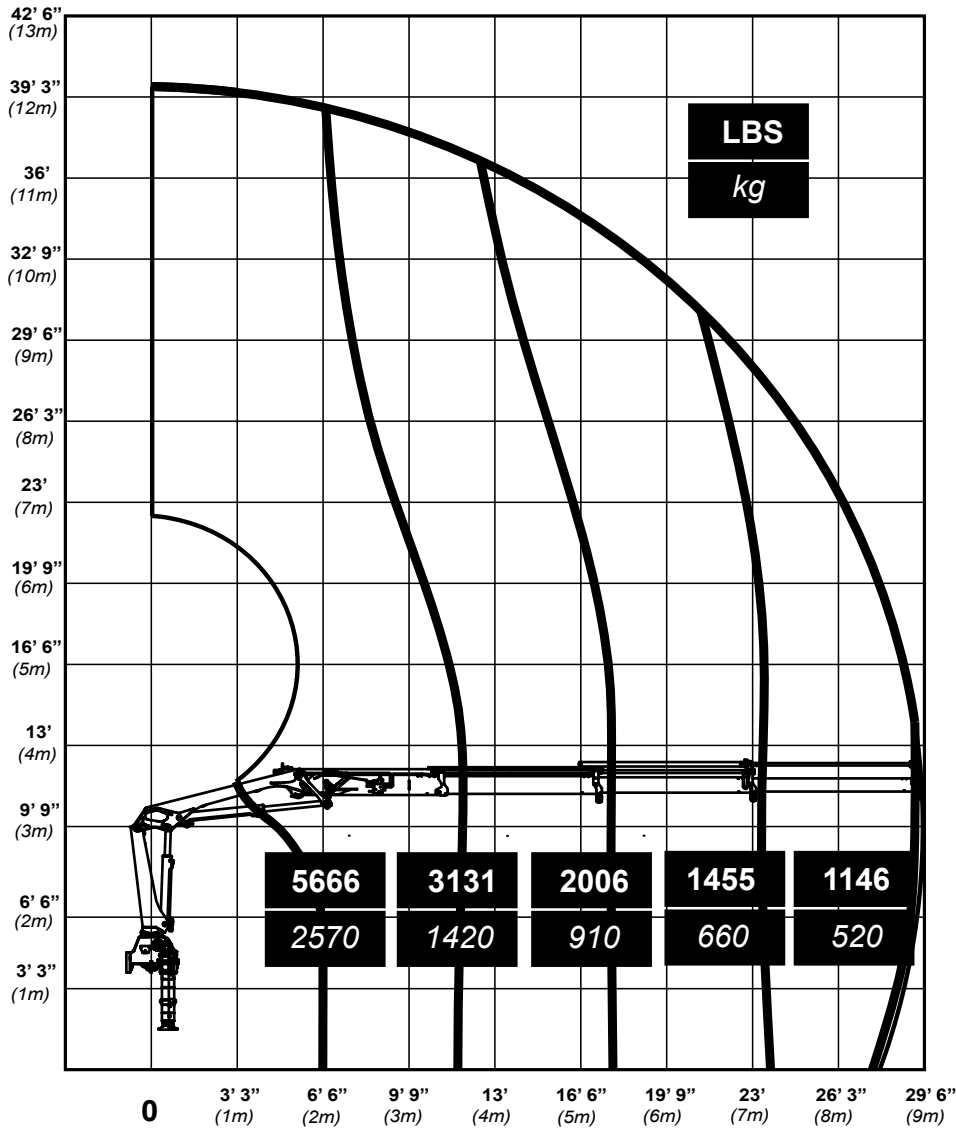
IMT

MATERIAL HANDLING SYSTEMS

IOWA MOLD TOOLING CO., INC.
 BOX 189 • GARNER • IA • 50438 • 641-923-3711

Model 610 MC K3

- Limit working loads to those shown. Deduct the weight of load handling devices.
- *El peso propio (tara) de los dispositivos de manipulación de cargas es parte de la carga levantada y se debe descontar de la capacidad nominal.*



70399999

610K-MC Lifting Capacity Chart, K4

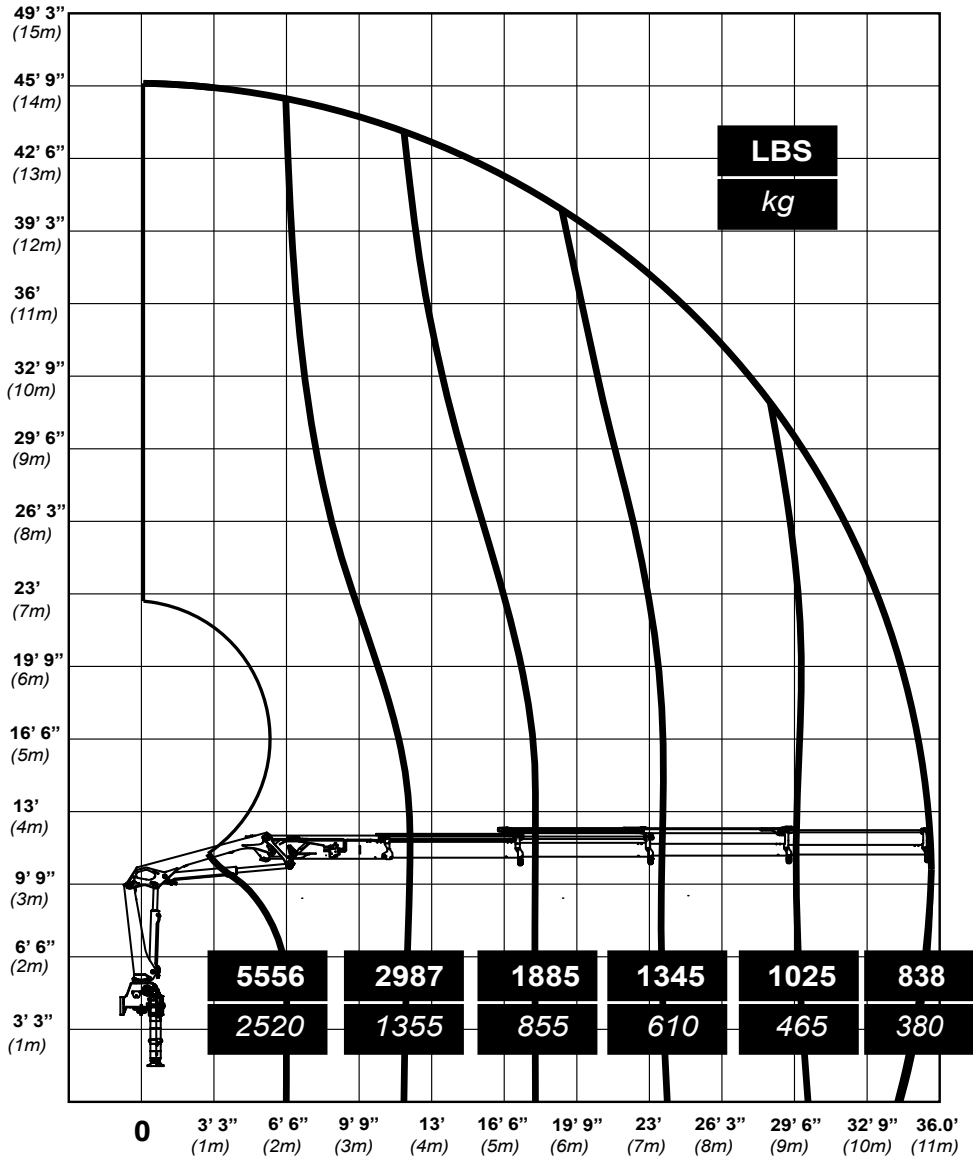
IMT

MATERIAL HANDLING SYSTEMS

IOWA MOLD TOOLING CO., INC.
 BOX 189 • GARNER • IA • 50438 • 641-923-3711

Model 610 MC K4

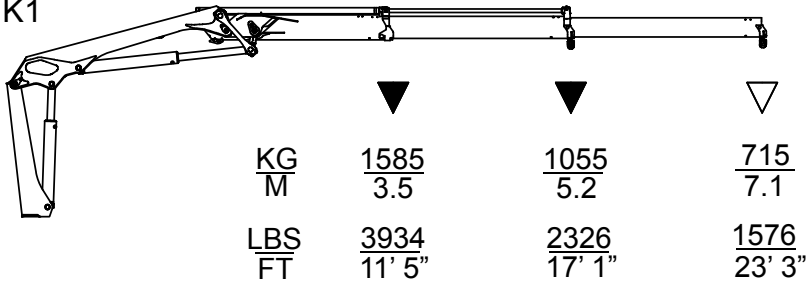
- Limit working loads to those shown. Deduct the weight of load handling devices.
- *El peso propio (tara) de los dispositivos de manipulación de cargas es parte de la carga levantada y se debe descontar de la capacidad nominal.*



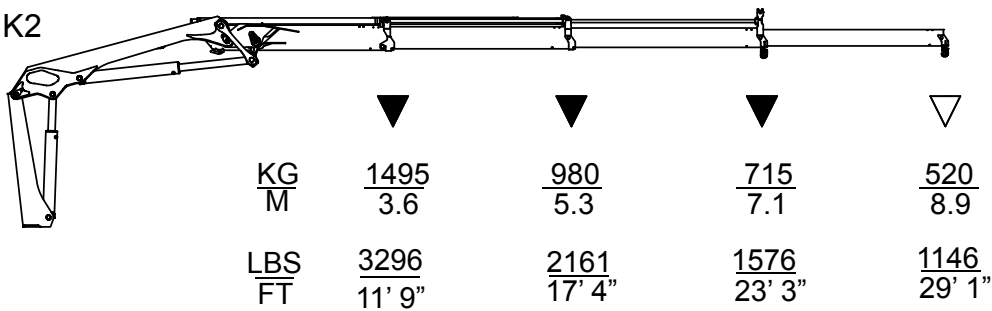
70490000

610K-MC Lifting Capacity Chart K1 - K4

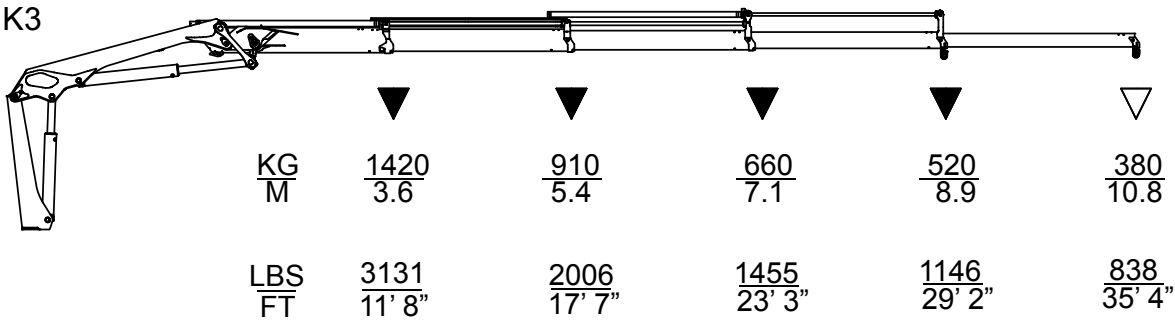
K1



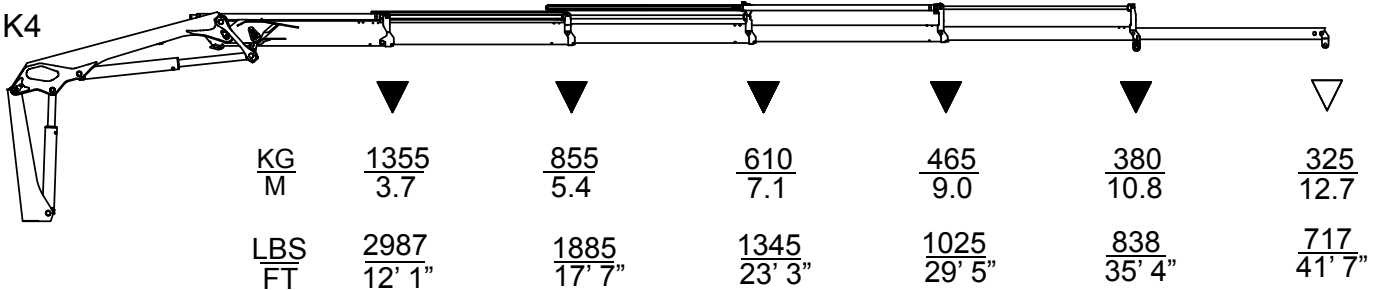
K2



K3



K4



610K-MCS/-RC Technical Specifications

Section - 3

610K-MCS / RC Specifications

Performance	Unit	610-K1	610-K2	610-K3	610-K4
Loading group (EN12999)		HC1 / HD5			
Load moment	ft-lb	39370	38713	36745	36089
Hydraulic reach	ft	17' 1"	23' 3"	29' 2"	35' 4"
Hydraulic telescopic movement	ft	5' 7"	11' 8"	17' 4'	23' 4"
Lifting capacity, hydraulic	lb-ft	3814 - 11'5"	3616 - 11'9"	3439 - 11'9"	3296 - 12'1"
		2546 - 17'1"	2370 - 17'4"	2216 - 17'8"	2904 - 17'8"
			1742 - 23'3"	1620 - 23'3"	1510 - 23'3"
				1268 - 29'2"	1157 - 29'6"
					948 - 35'4"
Lifting capacity, manual extensions	lb-ft	1576 - 23'3"	1146 - 29'2"	838 - 35' 4"	717 - 41'5"
Rotational torque, gross	ft-lb	5900			
Rotation angle	°	400			
Max. heel at max. load moment	°	5			
Rotation speed	°/s	24			

Dimensions	Unit	610-K1	610-K2	610-K3	610-K4
Height above chassis	ft/in	6'	6'	6'-1'	6'-2
Width	ft/in	6' - 11"			
Length, no extra valves	in	26			
Length, with extra valves (hose guides)	in	29			
Length, with extra valves (int. hose routing)	in	26			
Stabilizer spread, S1 (standard)	ft/in	11'2"			
Stabilizer spread, S2	ft/in	14'5"			
Stabilizer spread, D	ft/in	17'1"			

610-MCS / RC Specifications - Continued

Weights, basic loader	Unit	610-K1	610-K2	610-K3	610-K4
Standard loader 1), excl. stabilizers	lbs	1389	1554	1708	1841
Stabilizers, S1 fixed	lbs			253	
Stabilizers, S1 swing-up	lbs			265	
Stabilizers, S2 fixed	lbs			309	
Stabilizers, S2 swing-up	lbs			319	
Stabilizers, D fixed	lbs			352	
Stabilizers, D swing-up	lbs			363	
Mounting kit, 3 bolts	lbs			99	
Mounting kit, 6 bolts	lbs			121	
Tank, excl. oil (fitted on loader)	lbs			77	
Manual extensions	lbs	88	77	53	39
Oil in loader (stowing position)	lbs	22	26	30	33

1) Weights \pm 5% because of tolerances for plate thickness

Weights, equipment	Unit	610-K1	610-K2	610-K3	610-K4
1 extra valve, hose guides	lbs	88	121	143	165
2 extra valves, hose guides	lbs	132	165	198	231
1 extra valve, int. hose routing	lbs			165	
2 extra valves, int. hose routing	lbs			286	
High-pressure filter	lbs			15	

Max load on stabilizers (per stabilizer cylinder)	Unit	610-K1	610-K2	610-K3	610-K4
S1, fixed	ft lbs			12364	
S1, swing-up	ft lbs			12364	
S2, fixed	ft lbs			12364	
S2, swing-up	ft bs			12364	

Power Consumption / Oil Capacity	Unit	610-K1	610-K2	610-K3	610-K4
Working pressure	PSI			4714	
Tank capacity (fitted on loader)	gal			14.5	
Max. pump performance, 1-circuit	g/min			6.6	

610K-MCS / RC Metric Specifications

PERFORMANCE		610-K1	610-K2	610-K3	610-K4
Loading group (EN12999)		HC1 / HD4			
Load moment	tm	6.0	5.9	5.6	5.5
Hydraulic reach	m	5.2	7.1	8.9	10.8
Hydraulic telescopic movement	mm	1725	3560	5285	7120
Lifting capacity, hydraulic	kg-m	1730 - 3.5 1155 - 5.2	1640 - 3.6 1075 - 5.3 790 - 7.1	1560 - 3.6 1005 - 5.04 735 - 7.1 575 - 8.9	1495 - 3.7 950 - 5.4 685 - 7.1 525 - 9.0 430 - 10.8
Lifting capacity, manual extensions	kg-m	715 - 7.1	520 - 8.9	380 - 10.8	325 - 12.7
Rotational torque, gross	kNm	8			
Rotation Angle	°	400			
Max. heel at max. load moment	°	5			
Rotation speed	%s	24			

Dimensions

Height above chassis	mm	1840	1840	1860	1895
Width	mm	2100			
Length, no extra valves	mm	661			
Length, with extra valves (hose guides)	mm	730			
Length, with extra valves (int. hose routing)	mm	661			
Stabilizer spread, S1 (standard)	mm	3400			
Stabilizer spread, S2	mm	4400			
Stabilizer spread, D	mm	5200			

Weight, basic loader

Standare loader 1), excl. stabilizers	kg	630	705	775	835
Stabilizers, S1 fixed	kg	115			
Stabilizers, S1 swing-up	kg	120			
Stabilizers S2 fixed	kg	140			
Stabilizer, S2 swing-up	kg	145			
Stabilizers, D fixed	kg	160			
Stabilizers, D swing-up	kg	165			
Mounting kits, 3-bolts	kg	45			
Mounting kit, 6-bolts	kg	55			
Tank, excl. oil (fitted on loader)	kg	35			
Manual extensions	kg	40	35	24	18
Oil in loader (slowing postion)	kg	10	12	14	15

1) Weights ± 5% because of tolerances for plate thickness.

610K-MCS / RC Metric Specifications- continued

Weights, equipment		610-K1	610-K2	610-K3	610-K4
1 extra valves, hose guides	kg	40	55	65	75
2 extra valves, hose guides	kg	60	75	90	105
1 extra valve, int. hose routing	kg	75			
2 extra valves, int. hose routing	kg	130			
High-pressure filter	kg	7			

Max. load on stabilizers (per stabilizer cylinder)

S1, fixed	kN	55
S1, swing-up	kN	55
S2, fixed	kN	55
S2, swing-up	kN	55

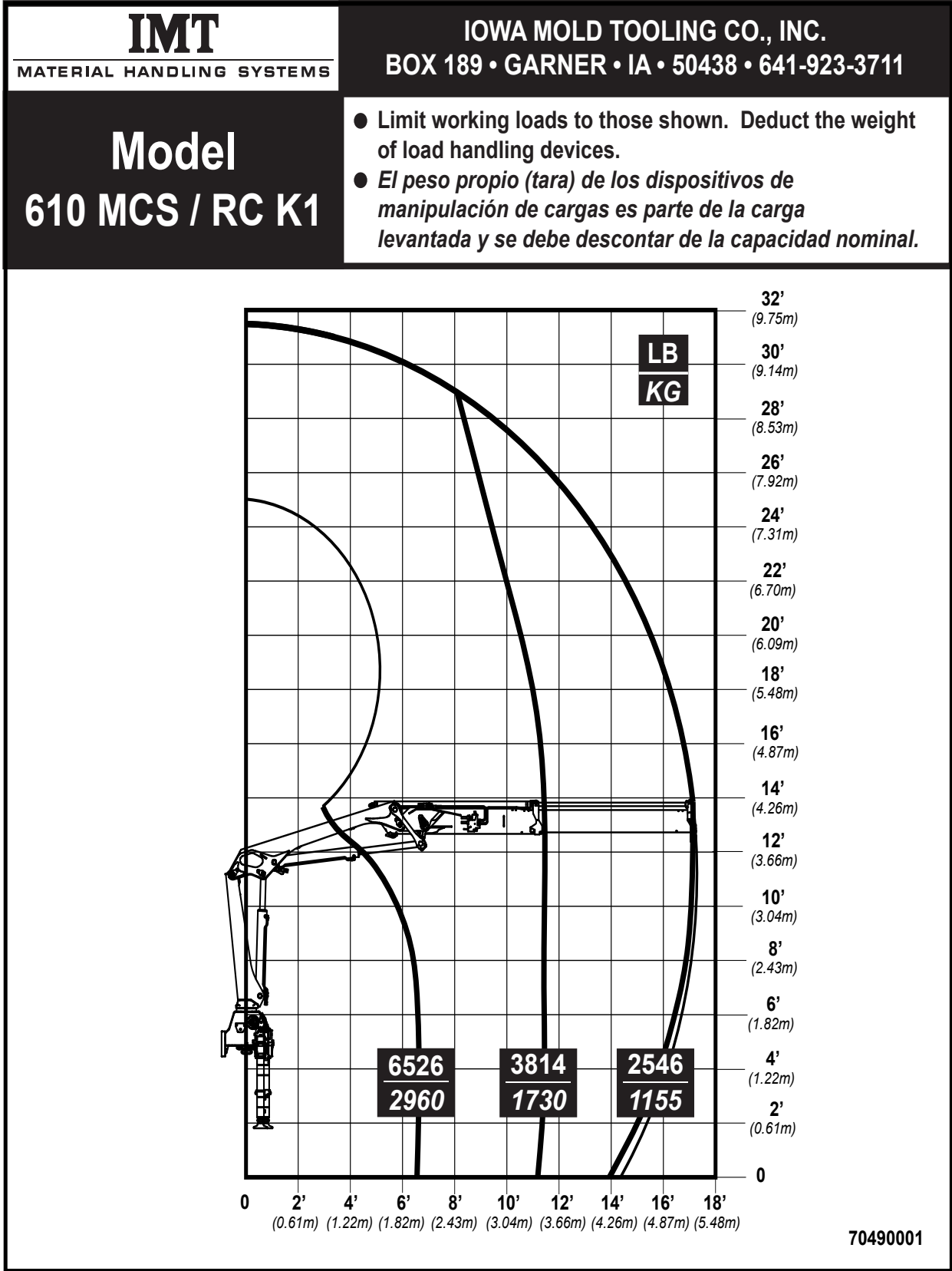
Power consumption / oil capacity

Working Pressure	Bar	325
Tank capacity (fitted on loader)	L	55
Max. pump performance, 1-circuit	L/min	25

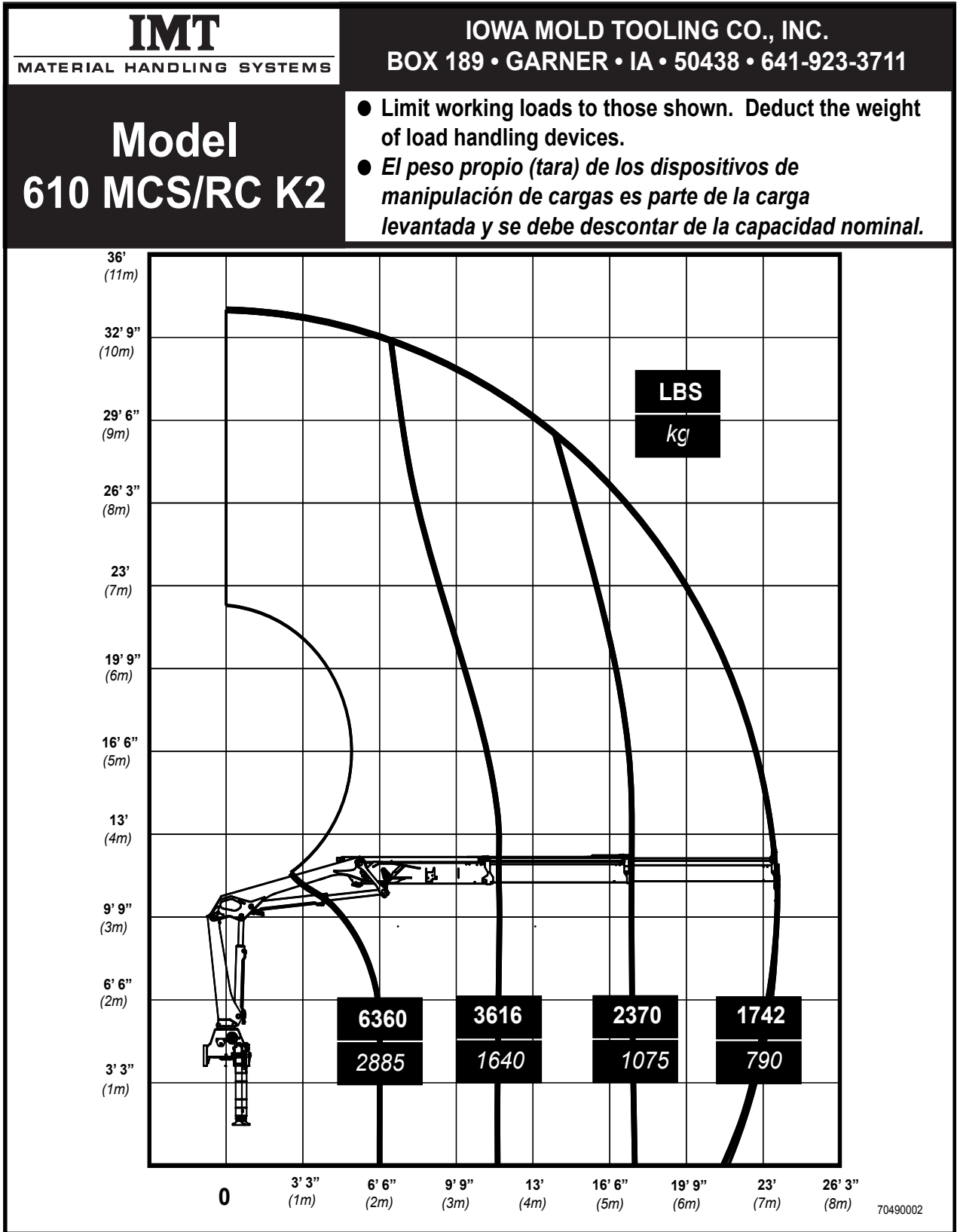
610K-MCS/RC Lifting Capacity Charts

Section - 4

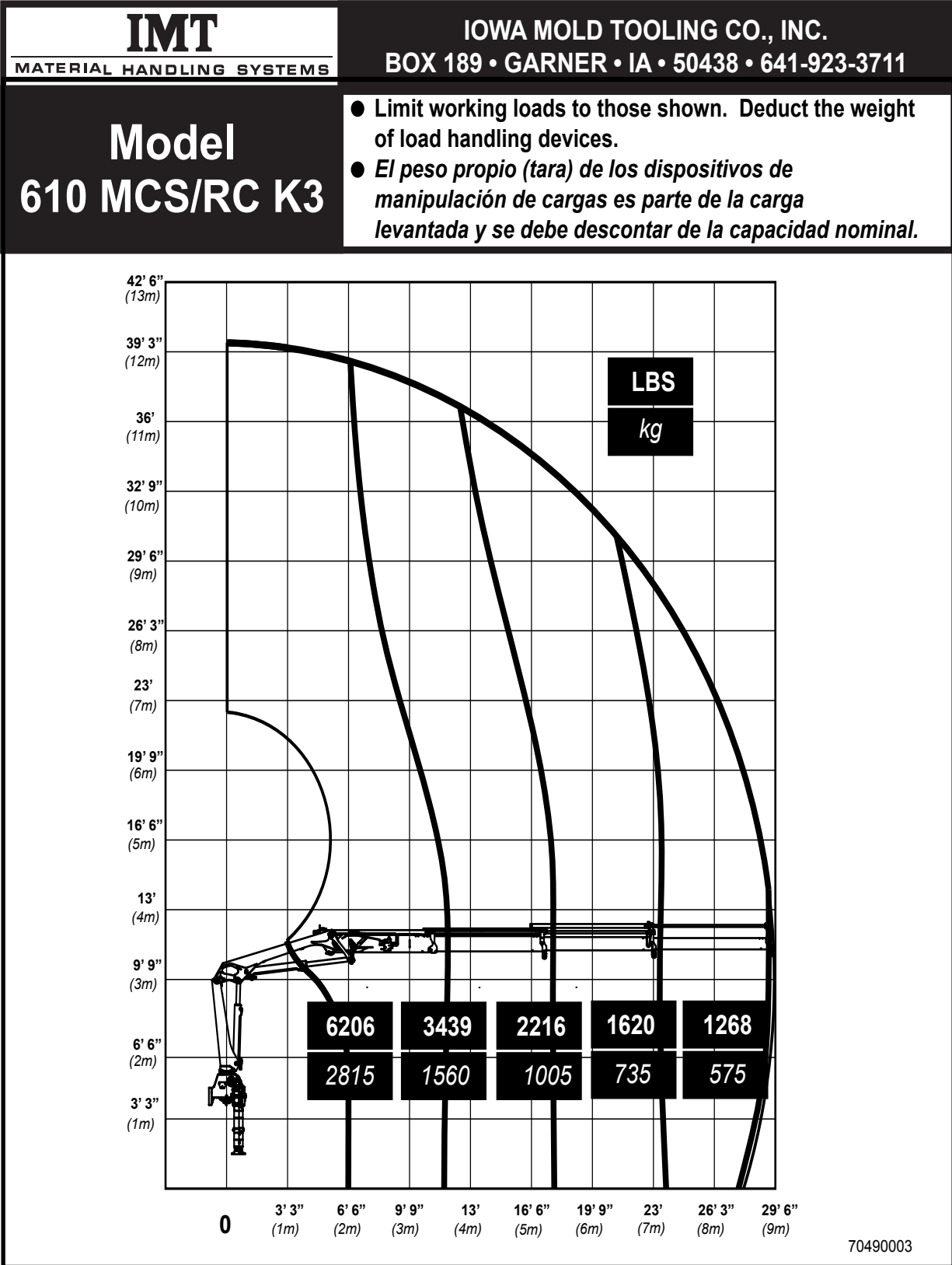
610K - MCS/-RC Lifting Capacity Chart, K1



610K - MCS/-RC Lifting Capacity Chart, K2



610K - MCS/-RC Lifting Capacity Chart, K3



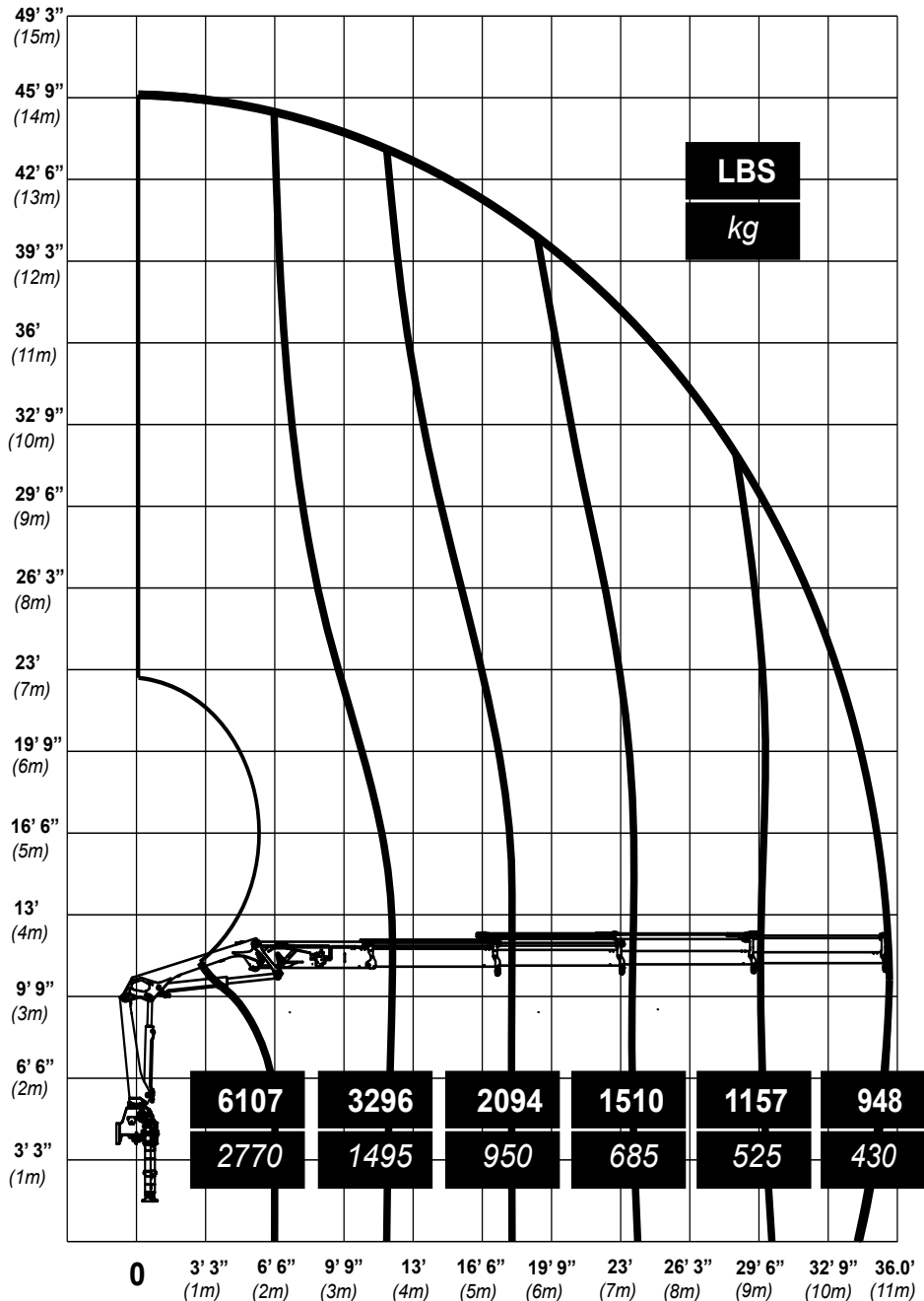
610K - MCS/-RC Lifting Capacity Chart, K4

IMT
MATERIAL HANDLING SYSTEMS

IOWA MOLD TOOLING CO., INC.
BOX 189 • GARNER • IA • 50438 • 641-923-3711

Model 610 MCS/RC K4

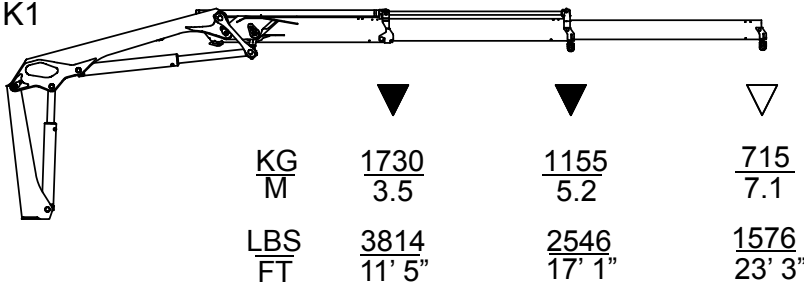
- Limit working loads to those shown. Deduct the weight of load handling devices.
- *El peso propio (tara) de los dispositivos de manipulación de cargas es parte de la carga levantada y se debe descontar de la capacidad nominal.*



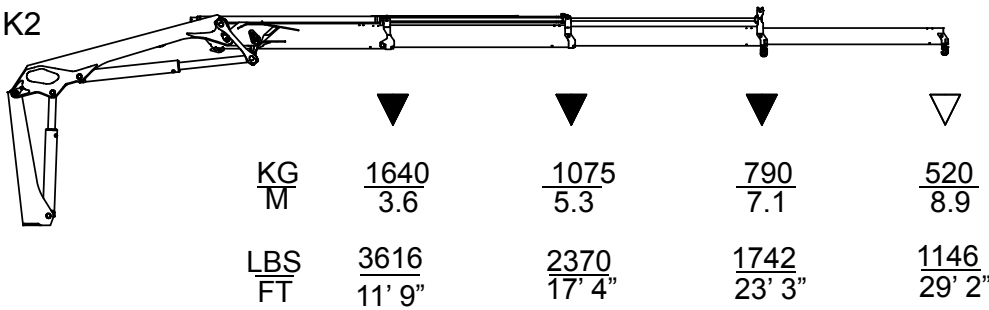
70490004

610K-MCS/RC Lifting Capacity Chart K1 - K4

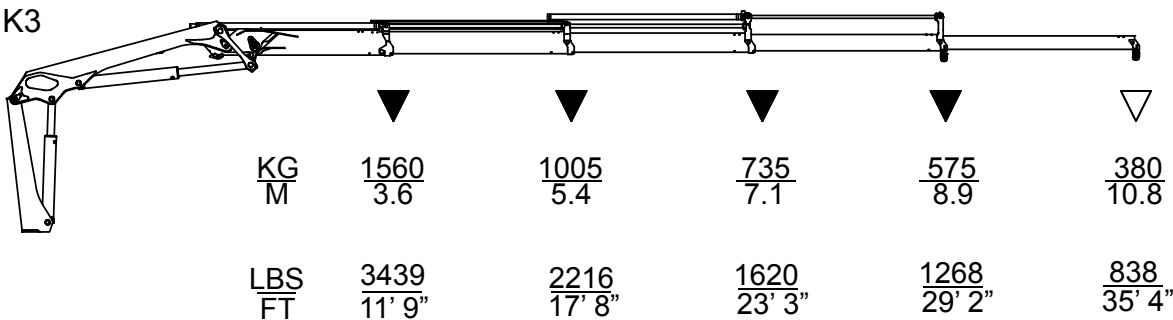
K1



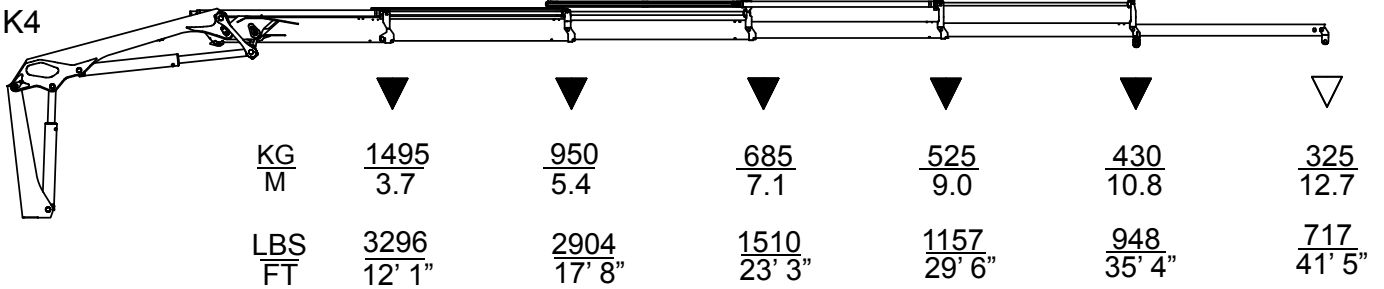
K2



K3



K4



This page left intentionally blank

This page left intentionally blank

710K - RCS TECHNICAL DATA

SECTION - 5

710K - RCS - Specifications

Performance	Unit	710-K1	710-K2	710-K3	710-K4
Loading group (EN12999)		HC1 / HD5			
Load moment	ft-lb	45184	43749	41597	40880
Hydraulic reach	ft	17'1"	23'5"	29'2"	35'5"
Hydraulic telescopic movement	ft	5' 8"	11' 8"	17' 4'	23' 4"
Lifting capacity, hydraulic	lb-ft	3935 - 11'5"	3737 - 11'10"	3560 - 11'10"	3417 - 12'2"
		2635 - 17'1"	2458 - 17'5"	2303 - 17'9"	2183 - 17'9"
Lifting capacity, manual extensions	lb-ft	1808 - 23'5"	1687 - 23'5"	1565 - 23'5"	1565 - 23'5"
			1323 - 29'2"	1213 - 29'6"	1213 - 29'6"
				992 - 35'5"	992 - 35'5"
Lifting capacity, manual extensions	lb-ft	1576 - 23'5"	1146 - 29'2"	838 - 35' 5"	717 - 41'8"
Rotational torque, gross	ft-lb	5900			
Rotation angle	°	400			
Max. heel at max. load moment	°	5			
Rotation speed	°/s	24			

Dimensions	Unit	710-K1	710-K2	710-K3	710-K4
Height above chassis	ft/in	6'	6'	6'-1'	6'-3"
Width	ft/in	6' - 11"			
Length, no extra valves	in	26			
Length, with extra valves (hose guides)	in	29			
Length, with extra valves (int. hose routing)	in	26			
Stabilizer spread, S1 (standard)	ft/in	11'2"			
Stabilizer spread, S2	ft/in	14'5"			
Stabilizer spread, D	ftin	17'1"			

Weights, basic loader

Standare loader 1), excl. stabilizers	lb	1389	1554	1709	1841
Stabilizers, S1 fixed	lb	253			
Stabilizers, S1 swing-up	lb	265			
Stabilizers S2 fixed	lb	309			
Stabilizer, S2 swing-up	lb	320			
Stabilizers, D fixed	lb	352			
Stabilizers, D swing-up	lb	363			
Mounting kits, 3-bolts	lb	99			
Mounting kit, 6-bolts	lb	121			
Tank, excl. oil (fitted on loader)	lb	77			
Manual extensions	lb	88	77	53	40
Oil in loader (slowing postion)	lb	22	26	31	33

1) Weights ± 5% because of tolerances for plate thickness

710K- RCS Specifications- continued

Weights, equipment		710-K1	710-K2	710-K3	710-K4
1 extra valves, hose guides	lb	88	121	145	165
2 extra valves, hose guides	lb	132	65	98	231
1 extra valve, int. hose routing	lb	165			
2 extra valves, int. hose routing	lb	286			
High-pressure filter	lb	15			

Max. load on stabilizers (per stabilizer cylinder)

S1, fixed	ft-lbs	12364
S1, swing-up	ft-lbs	12364
S2, fixed	ft-lbs	12364
S2, swing-up	ft-lbs	12364

Power consumption / oil capacity

Working Pressure	PSI	4714
Tank capacity (fitted on loader)	gal	14.5
Max. pump performance, 1-circuit	g/min	6.6

710K-RCS Metric Specifications

PERFORMANCE		710-K1	710-K2	710-K3	710-K4
Loading group (EN12999)		HC1 / HD4			
Load moment	tm	6.3	6.1	5.8	5.7
Hydraulic reach	m	5.2	7.1	8.9	10.8
Hydraulic telescopic movement	mm	1725	3560	5285	7120
Lifting capacity, hydraulic	kg-m	1785 - 3.5	1685 - 3.6	1615 - 3.6	1550 - 3.7
		1195 - 5.2	1115 - 5.3	1045 - 5.4	990 - 5.4
			820 - 7.1	765 - 7.1	710 - 7.1
				600 - 8.9	550 - 9.0
Lifting capacity, manual extensions	kg-m	715 - 7.1	520 - 8.9	380 - 10.8	325 - 12.7
Slewing torque, gross	kNm	8			
Slewing Angle	°	400			
Max. heel at max. load moment	°	5			
Slewing speed	%s	24			

Dimensions

Height above chassis	mm	1840	1840	1860	1895
Width	mm	2100			
Length, no extra valves	mm	661			
Length, with extra valves (hose guides)	mm	730			
Length, with extra valves (int. hose routing)	mm	661			
Stabilizer spread, S1 (standard)	mm	3400			
Stabilizer spread, S2	mm	4400			
Stabilizer spread, D	mm	5200			

Weight, basic loader

Standard loader 1), excl. stabilizers	kg	630	705	775	835
Stabilizers, S1 fixed	kg	115			
Stabilizers, S1 swing-up	kg	120			
Stabilizers S2 fixed	kg	140			
Stabilizer, S2 swing-up	kg	145			
Stabilizers, D fixed	kg	160			
Stabilizers, D swing-up	kg	165			
Mounting kits, 3-bolts	kg	45			
Mounting kit, 6-bolts	kg	55			
Tank, excl. oil (fitted on loader)	kg	35			
Manual extensions	kg	40	35	24	18
Oil in loader (slowing position)	kg	10	12	14	15

1) Weights ± 5% because of tolerances for plate thickness.

710K-RCS Metric Specifications- continued

Weights, equipment		610-K1	610-K2	610-K3	610-K4
1 extra valves, hose guides	kg	40	55	65	75
2 extra valves, hose guides	kg	60	75	90	105
1 extra valve, int. hose routing	kg	75			
2 extra valves, int. hose routing	kg	130			
High-pressure filter	kg	7			

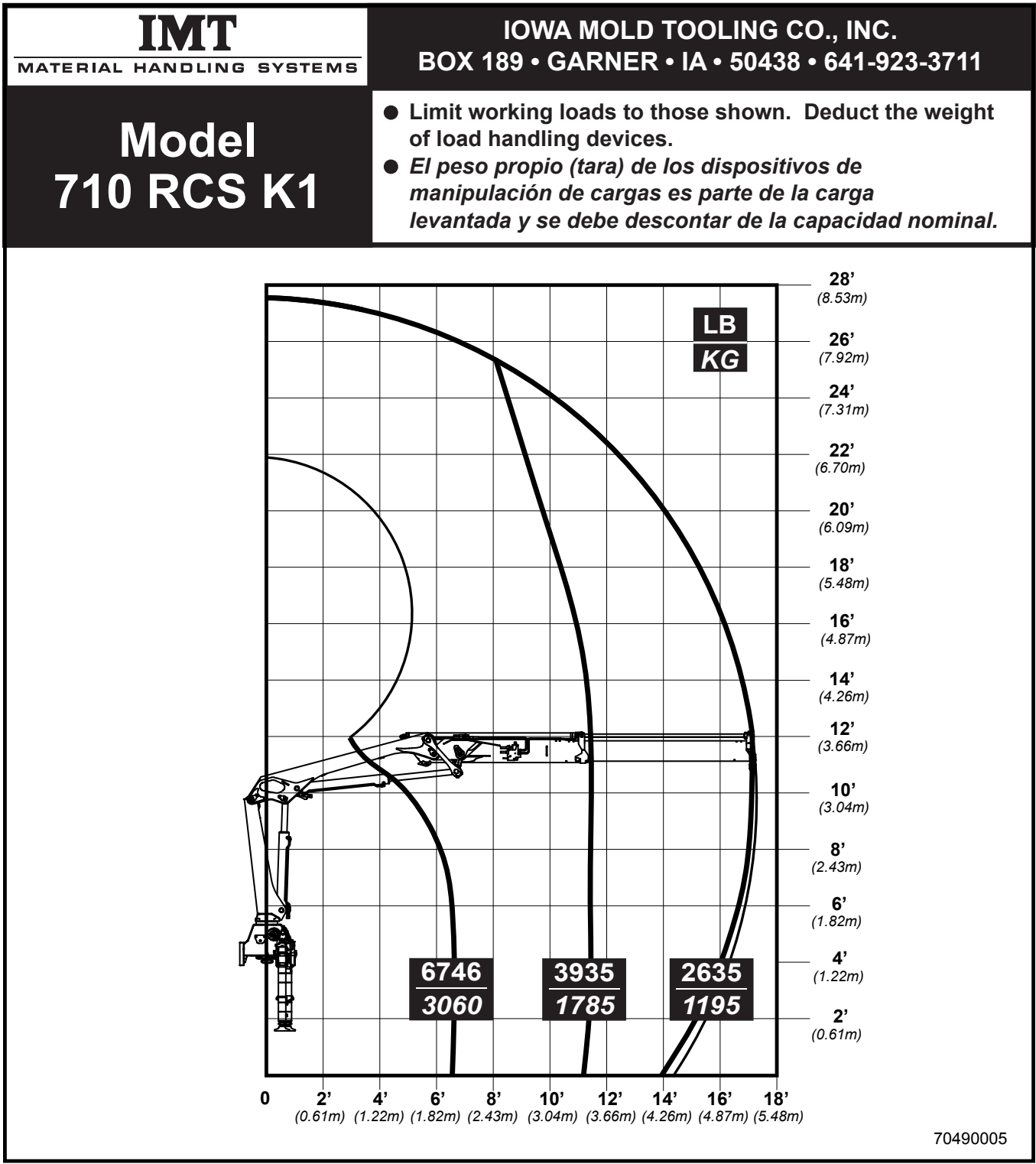
Max. load on stabilizers (per stabilizer cylinder)

S1, fixed	kN	55
S1, swing-up	kN	55
S2, fixed	kN	55
S2, swing-up	kN	55

Power consumption / oil capacity

Working Pressure	Bar	325
Tank capacity (fitted on loader)	L	55
Max. pump performance, 1-circuit	L/min	25

710 RCS Lifting Capacity Chart, K1



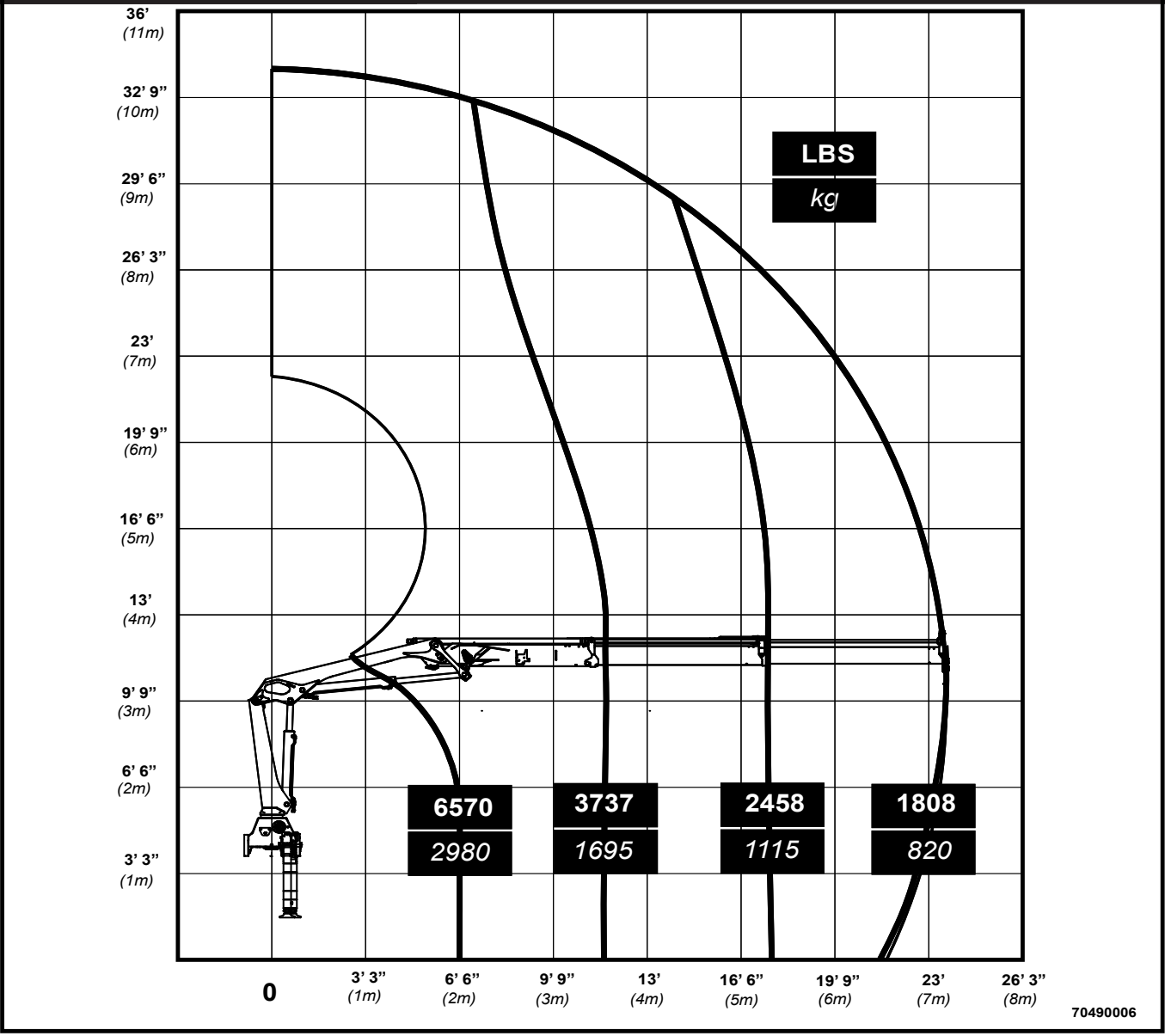
710 RCS Lifting Capacity Chart, K2

IMT
MATERIAL HANDLING SYSTEMS

IOWA MOLD TOOLING CO., INC.
BOX 189 • GARNER • IA • 50438 • 641-923-3711

Model 710 RCS K2

- Limit working loads to those shown. Deduct the weight of load handling devices.
- *El peso propio (tara) de los dispositivos de manipulación de cargas es parte de la carga levantada y se debe descontar de la capacidad nominal.*



710 RCS Lifting Capacity Chart, K3

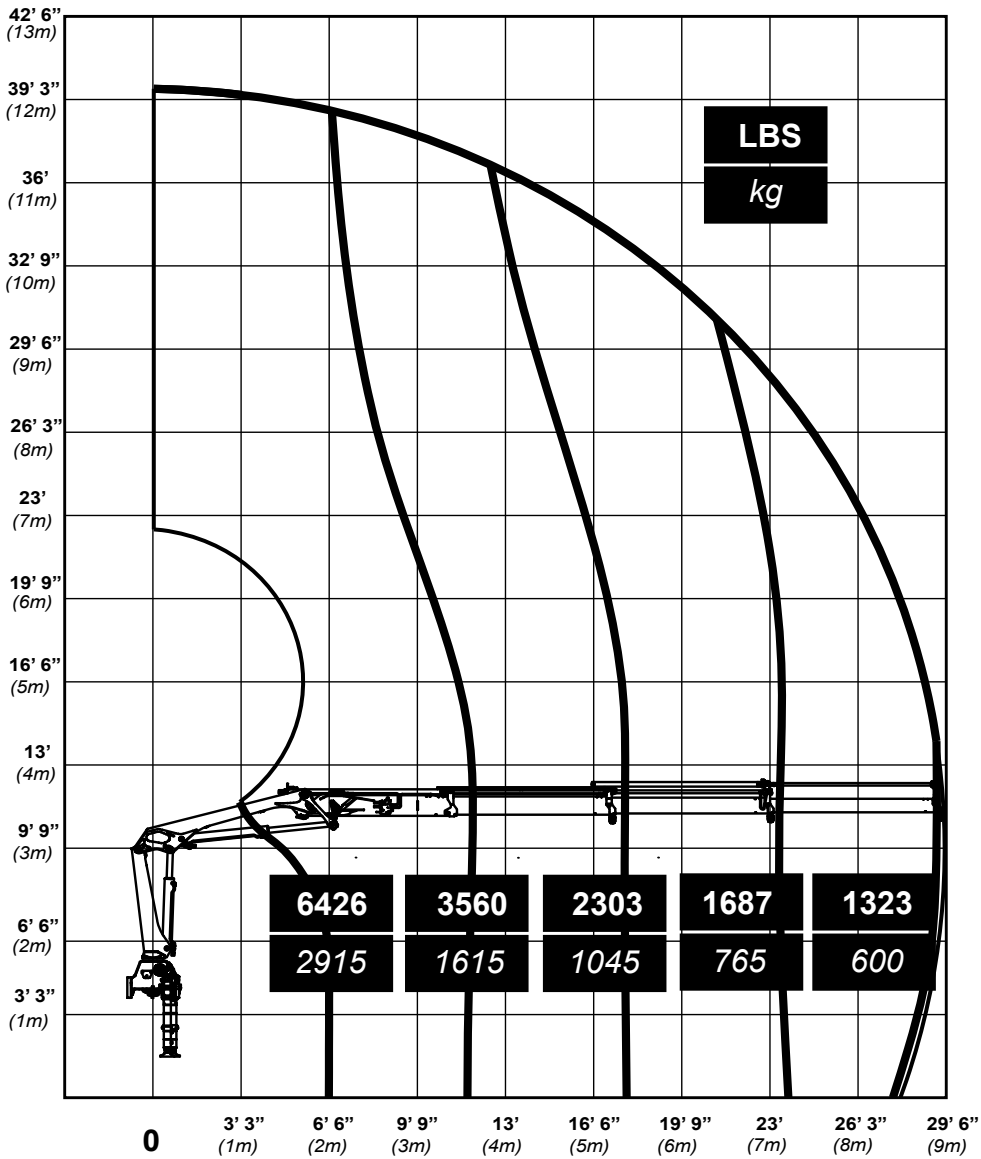
IMT

MATERIAL HANDLING SYSTEMS

IOWA MOLD TOOLING CO., INC.
BOX 189 • GARNER • IA • 50438 • 641-923-3711

Model 710 RCS K3

- Limit working loads to those shown. Deduct the weight of load handling devices.
- *El peso propio (tara) de los dispositivos de manipulación de cargas es parte de la carga levantada y se debe descontar de la capacidad nominal.*



70490007

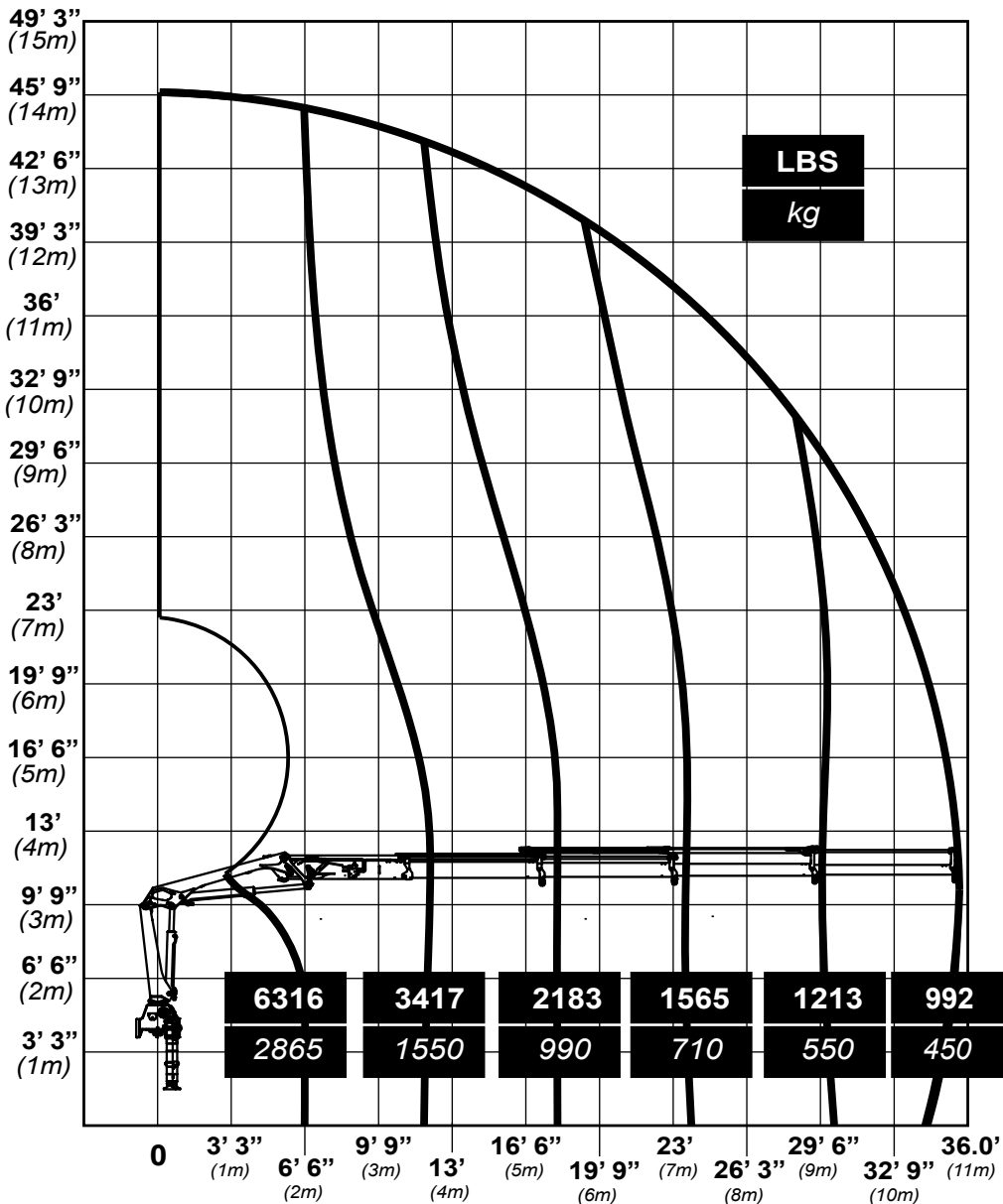
710 RCS Lifting Capacity Chart, K4

IMT
MATERIAL HANDLING SYSTEMS

IOWA MOLD TOOLING CO., INC.
BOX 189 • GARNER • IA • 50438 • 641-923-3711

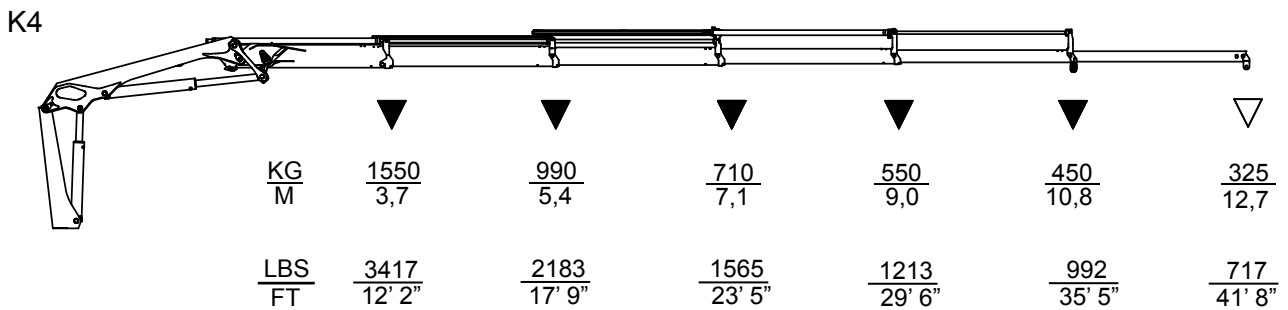
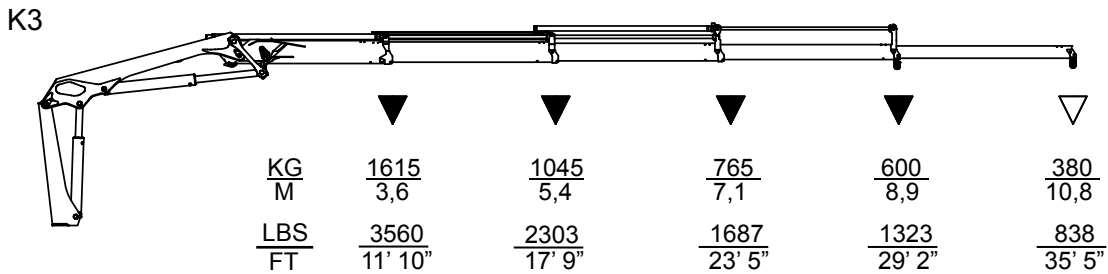
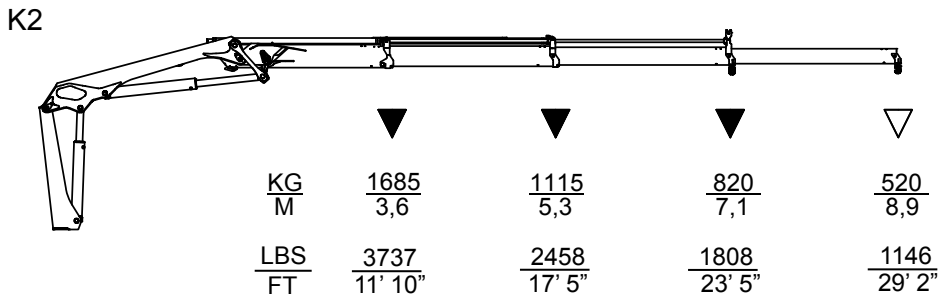
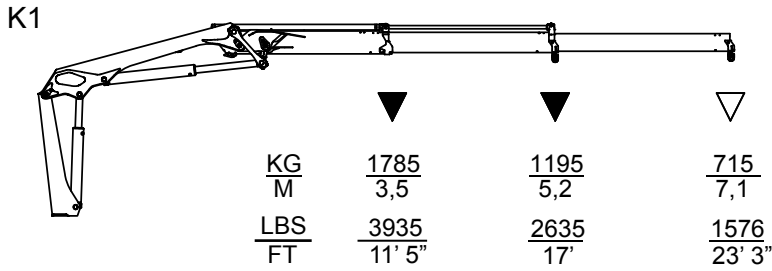
Model 710 RCS K4

- Limit working loads to those shown. Deduct the weight of load handling devices.
- *El peso propio (tara) de los dispositivos de manipulación de cargas es parte de la carga levantada y se debe descontar de la capacidad nominal.*



70490008

710K-RCS Lifting Capacity Chart K1 - K4



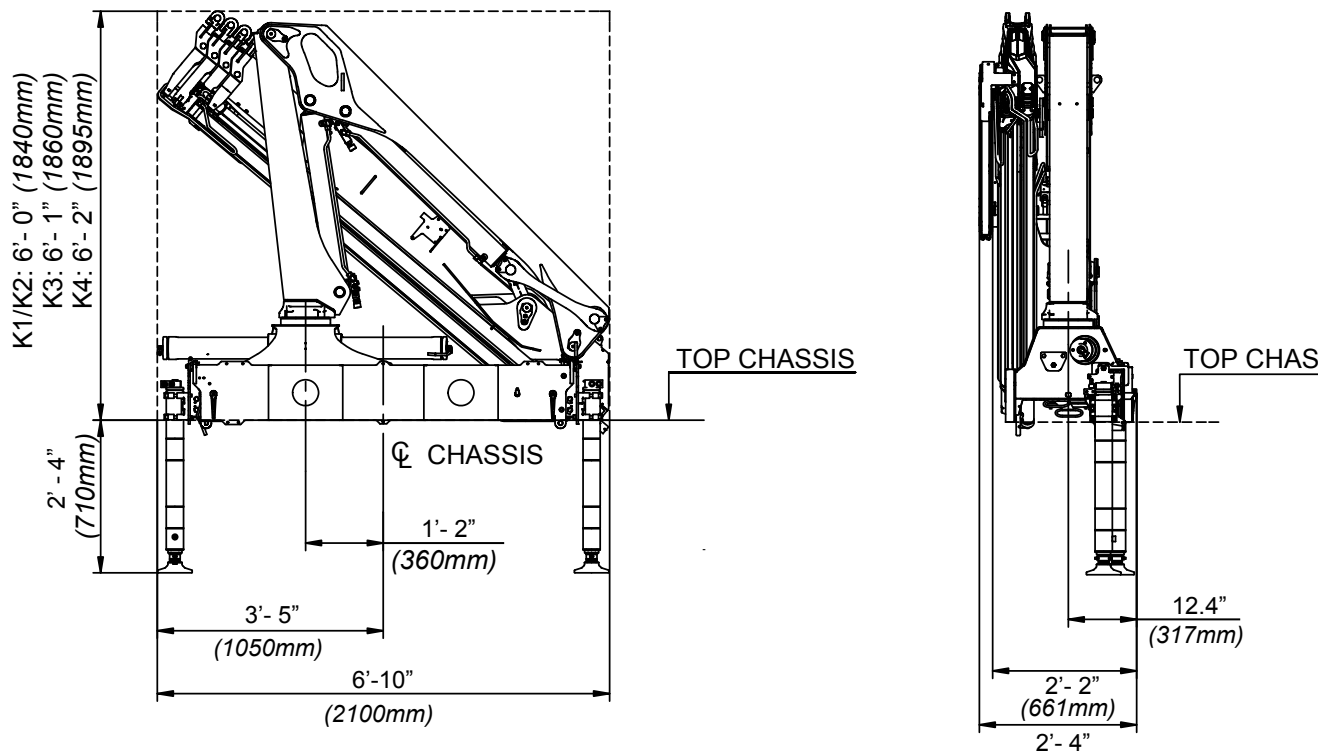
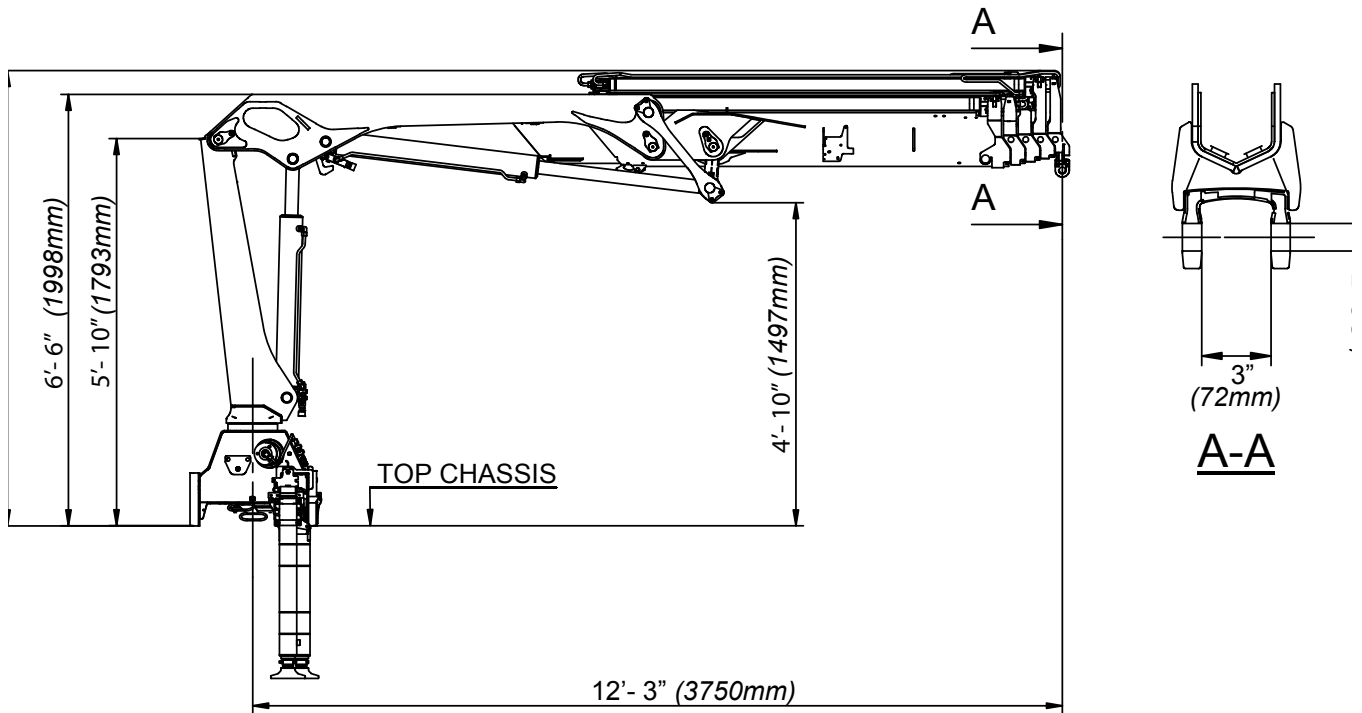
This page left intentionally blank

This page left intentionally blank

**610K-MC, 610K-MCS/RC, 710K - RCS
TECHNICAL DATA**

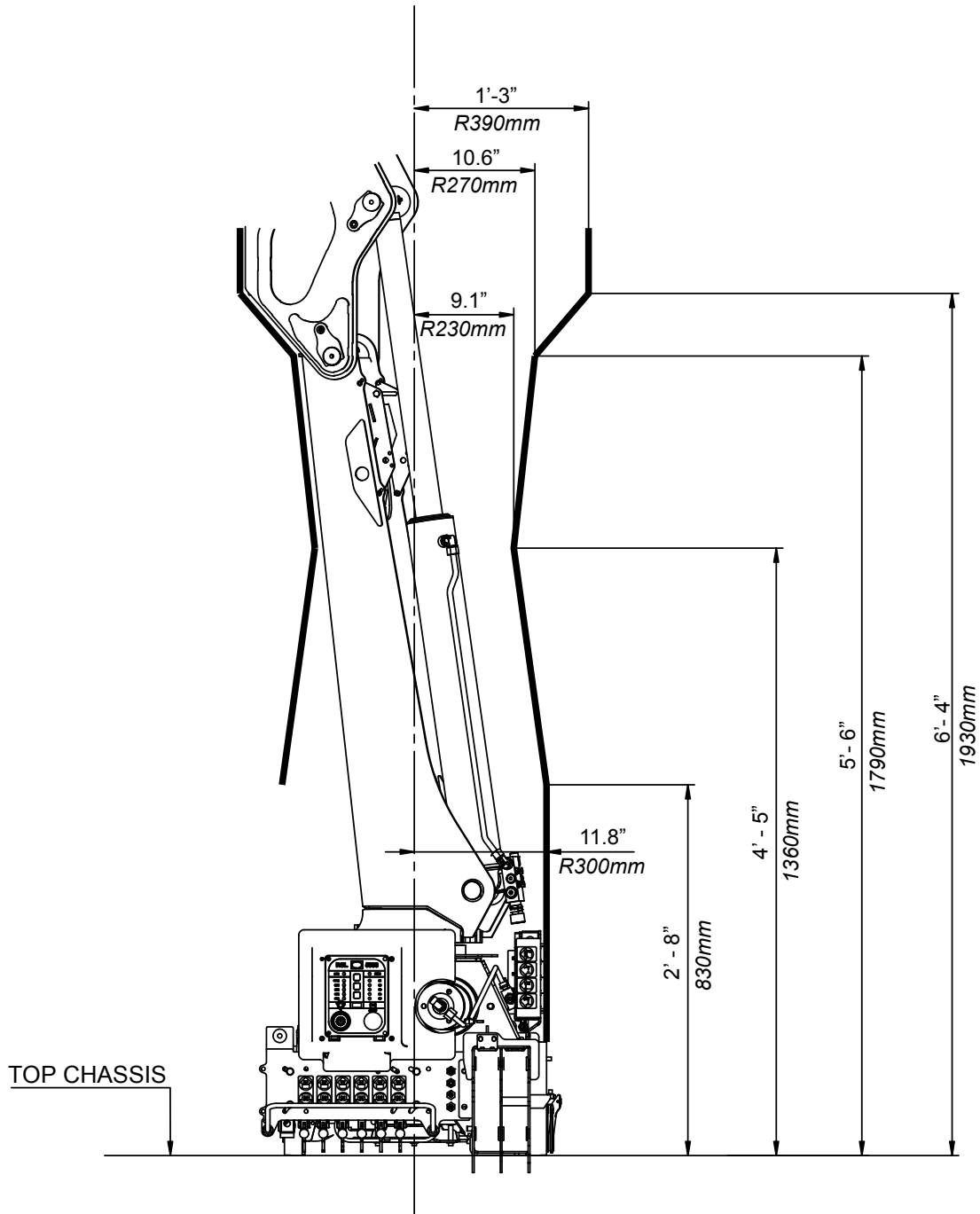
SECTION - 6

Dimension Sketch



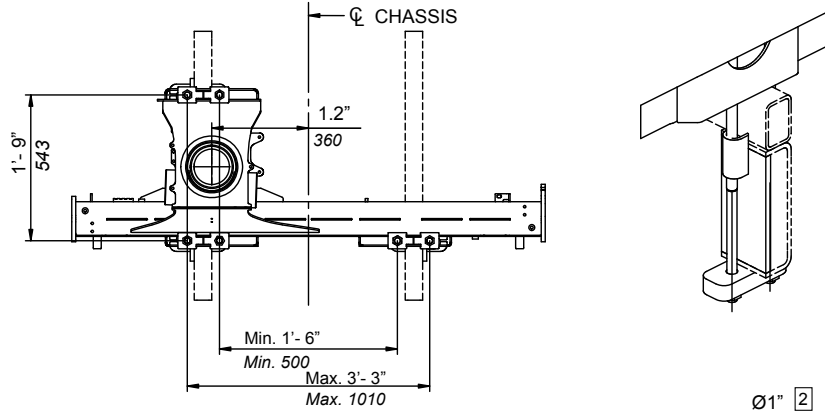
Rotation Radius

D



Dimension Sketch For Truck Mounted Loader

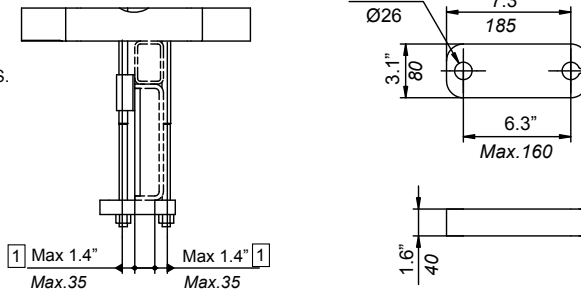
MOUNTING KIT 6 X 7/8 UNF BOLTS.



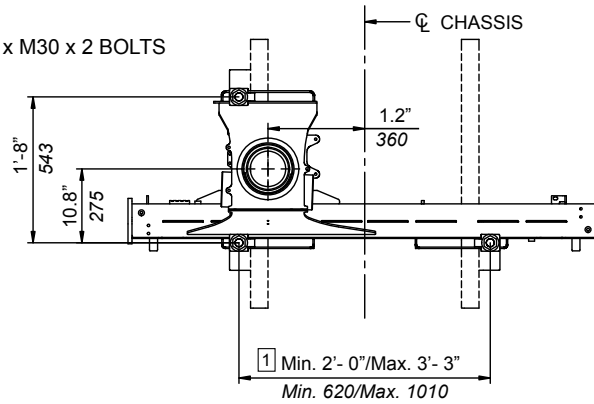
NOTES:

- 1) VALUES DICTATED BY STRENGTH CONSIDERATIONS.
- 2) DRILL HOLE WHEN ASSEMBLING.

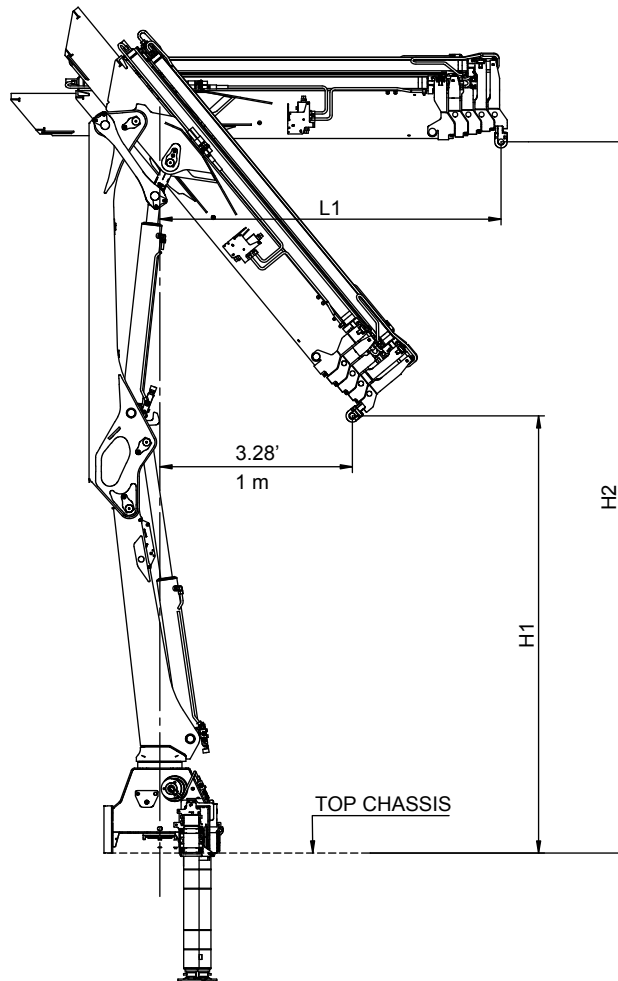
KEY: $\frac{\text{FT / IN}}{\text{mm}}$



MOUNTING KIT 3 x M30 x 2 BOLTS

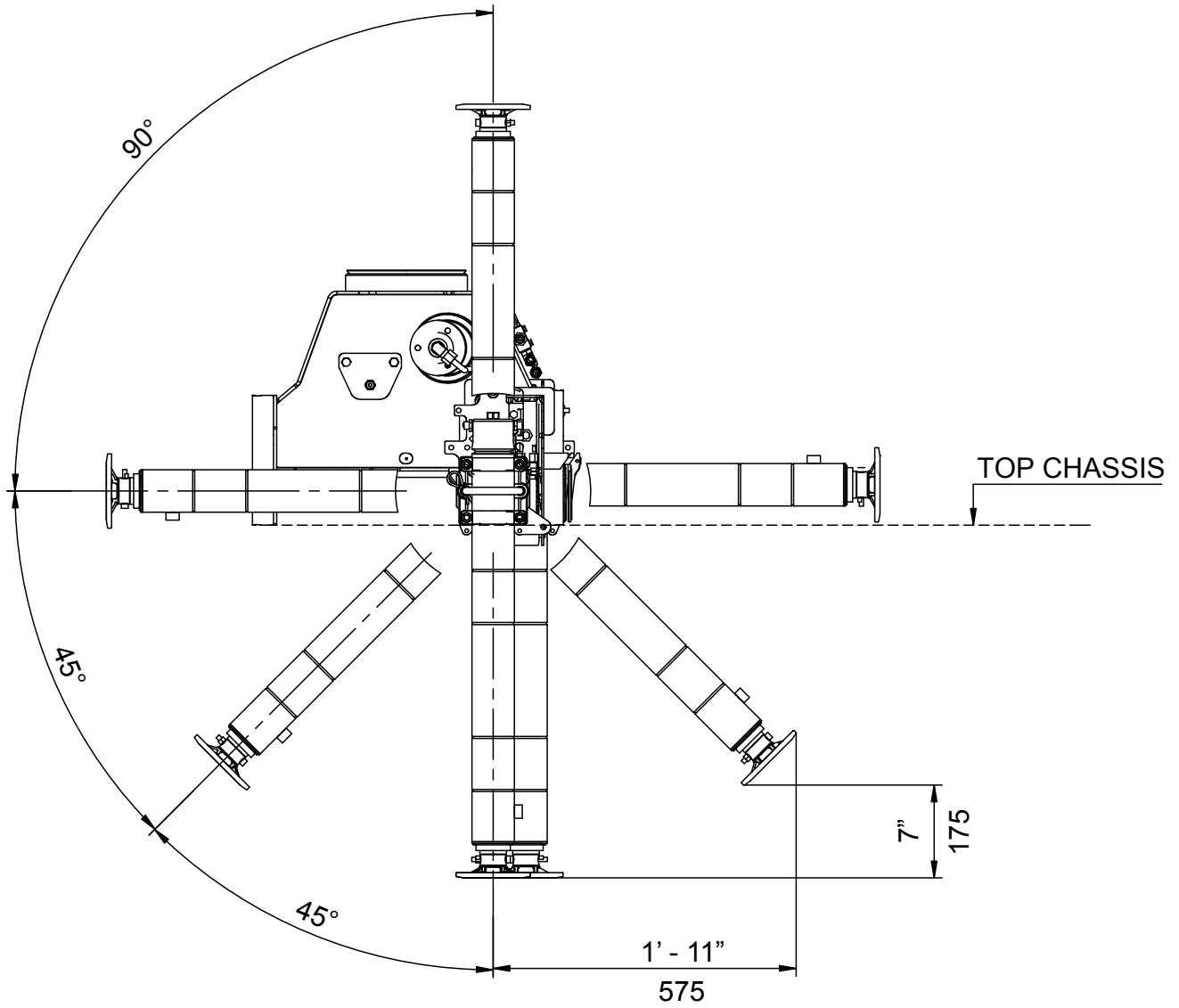


Lifting Height at Column

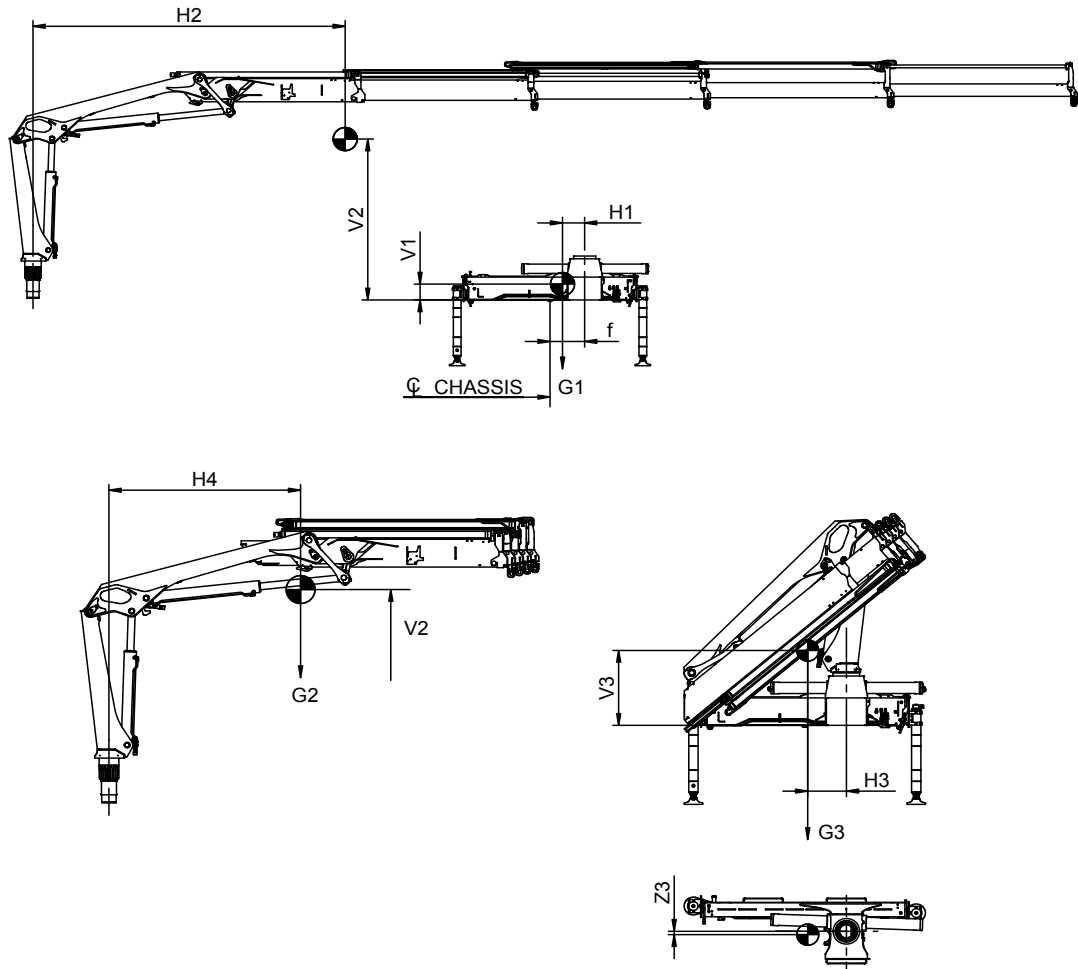


	H1 MM	H1 FEET/INCHES	H2 MM	H2 FEET/INCHES	L1 MM	L1 FEET/INCHES
K1	2530	8' 3"	3655	11' 11"	1565	5' 1"
K2	2445	8'	3670	12'	1635	5' 4"
K3	2355	7' 9"	3685	12' 1"	1705	5' 7"
K4	2270	7' 5"	3700	12' 1.6"	1775	5' 9"

Dimension Sketch: Swing-Up Stabilizer Legs (Manual)



Dimension Sketch: Center of Gravity



	MM									KG		
	V1	V2	V3	H1	H2	H3	H4	Z3	f	G1	G2	G3
610-K1	140	1830	590	235	1455	355	1220	-15	360	305	465	770
610-K2	140	1915	620	235	2055	355	1415	5	360	305	540	845
610-K3	140	1975	650	235	2670	345	1560	25	360	305	610	915
610-K4	140	2020	670	235	3245	335	1660	35	360	305	670	975
	FEET/INCHES									POUNDS		
	V1	V2	V3	H1	H2	H3	H4	Z3	f	G1	G2	G3
610-K1	5.5"	6'	1' 11"	9"	4' 9"	1' 2"	4'	-0.6"	1' 2"	1'	1' 6"	2' 6"
610-K2	5.5"	6' 3"	2'	9"	6' 8"	1' 2"	4' 8"	0.2"	1' 2"	1'	1' 9"	2' 6"
610-K3	5.5"	6' 5"	2' 1"	9"	8' 10"	1' 1.5"	5' 1"	.10"	1' 2"	1'	2'	3'
610-K4	5.5"	6' 7"	2' 2"	9"	10' 8"	1' 1"	5' 5"	1.4"	1' 2"	1'	2' 2"	3' 2"



IOWA MOLD TOOLING CO., INC.

P.O. Box 189 Garner, IA 50438

Tel: 641.923.3711

Fax: 641.923.2424

www.imt.com

IMT reserves the right to make changes in engineering, design, specifications, add improvements or discontinue manufacturing at any time without notice or obligation.

IMT and IMT LOGO are registered trademarks of Iowa Mold Tooling Co., Inc., Garner, IA, USA.

© 2017 Iowa Mold Tooling Co., Inc. All Right Reserved.