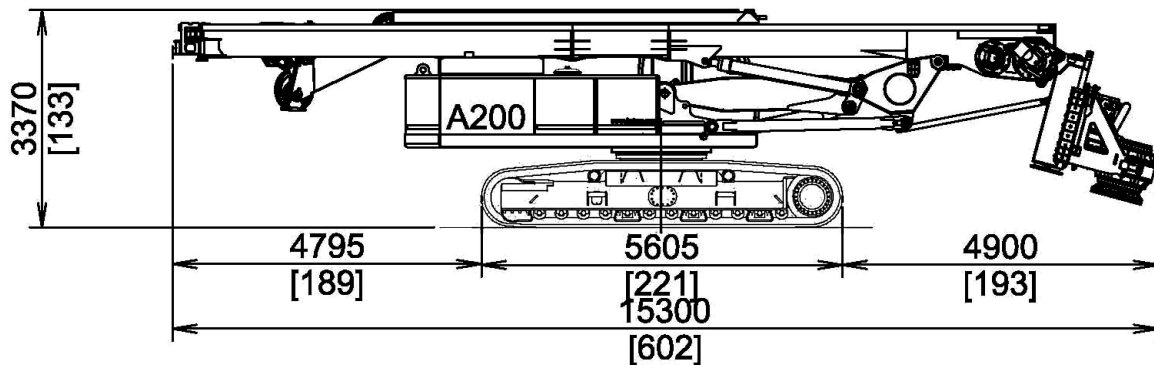


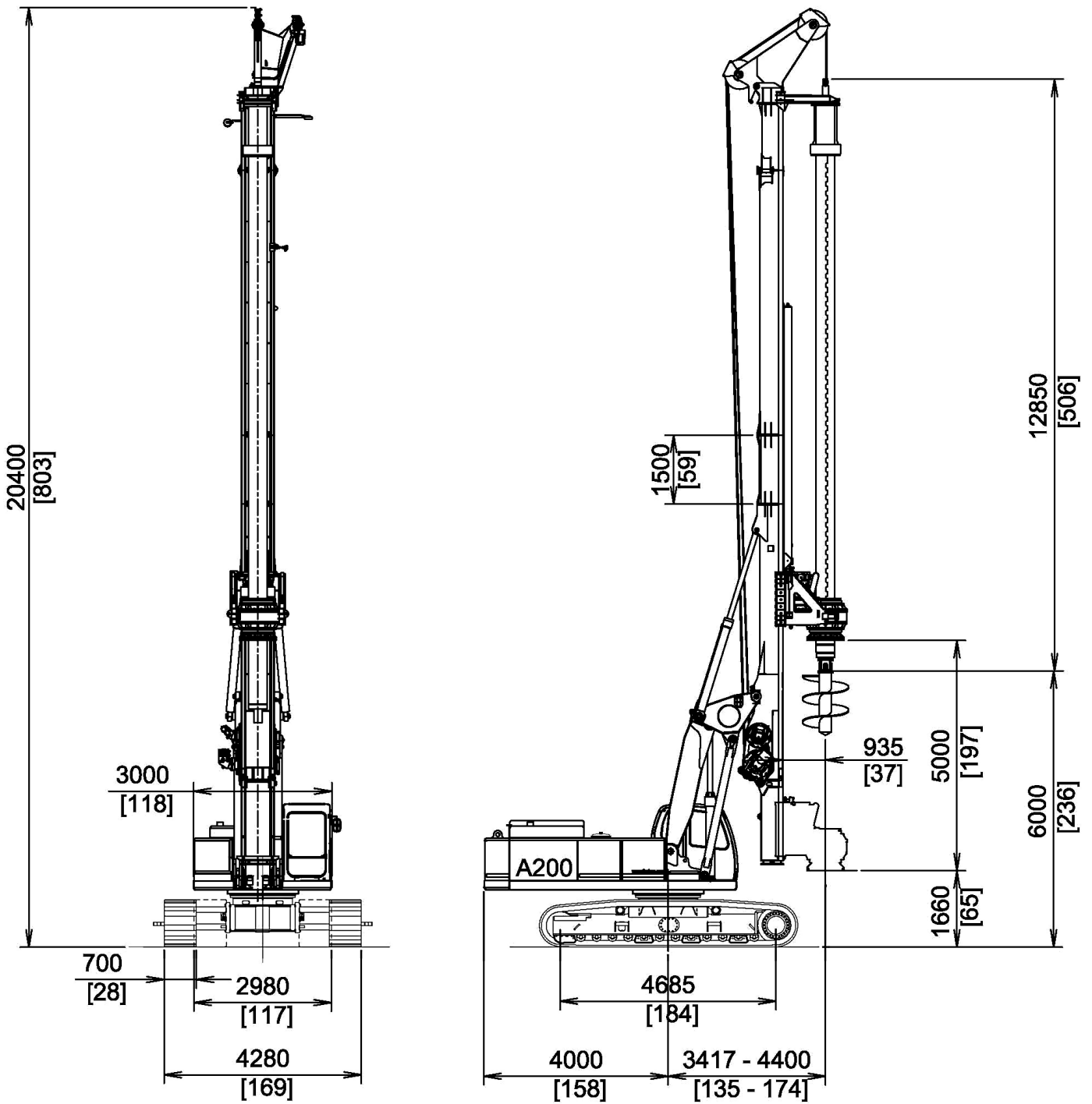


A 200



| | | |
|--|------------|------------------------|
| Base | | IMT |
| Undercarriage length / widening range / shoe | mm | 5605/2980 - 4280/700 |
| | in | 221/117 - 169/27,5 |
| Engine type | | CAT C 7.2 |
| Power | KW | 205 (279 HP) @1800 rpm |
| Rotary | | |
| Installed torque | kNm | 205 |
| | lbf ft | 151205 |
| Working speed | rpm | 8 - 27 |
| Discharge speed | rpm | 40 - 120 |
| Winches | | |
| Main winch pull force | kN | 180 |
| | lbf | 40470 |
| Main winch speed | m/min | 85 |
| | ft/min | 279 |
| Main winch Cable diameter | mm | 26 |
| | in | / |
| Auxiliary winch pull force | kN | 80 |
| | lbf | 17985 |
| Auxiliary winch Speed | m/min | 85 |
| | ft/min | 279 |
| Auxiliary winch Cable diameter | mm | 18 |
| | in | / |
| Crowd system | | |
| Kelly crowd push | kN | 180 |
| | lbf | 40470 |
| Kelly crowd pull | kN | 200 |
| | lbf | 44965 |
| Stroke (mm) | mm | 5000 |
| | in | 197 |
| Mast | | |
| Mast raking forward | | 5° |
| Mast side raking | | + 8° |
| Mast raking backwards | | 15° |
| Pile max. diameter | mm | 1800 |
| | in | 71 |
| Kelly bar | | |
| Standard | | 4/42 |
| Options available | | 4/46 - 4/48 - 5/60 |
| Operating Weight w/standard kelly bar | t (metric) | 60 |
| | lbs | 132277 |

Measurements in working phase



IMT
INTERNATIONAL

Legal Headquarters:

Via dei Gracchi, 91 - 00192 Roma Italy

Offices and Plant:

Via d'Ancona, 39 - 60027 Osimo (An) - Italy

Tel. + 39 071 723341 r.a. - Fax + 39 071 7133352

www.imtspa.com - imt@imtspa.com

All technical data are purely indicative and subject to change without notice.