

VR-638 Material Handler

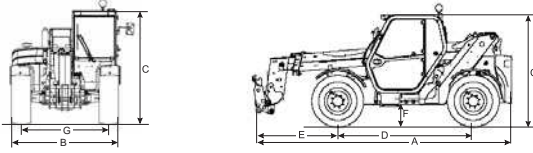


Reach for More

Greater lift capacity from a more compact machine — the hallmark of the VR-638, a new telescopic material handler from Ingersoll-Rand. With over 38 feet of reach, a lift capacity of 6,700 pounds, and tool carrier capabilities, the VR-638 gives you the power to move virtually any load — right where you want it — making it one of the most productive and versatile machines in your fleet.

VR-638 Material Handler

Specifications



MODEL VR-638

SIZE / DIMENSIONS*

Overall Length (less forks) in (cm)	A	220 (558)
Overall Width in (cm)	B	88 (224)
Overall Height in (cm)	C	94 (238)
Wheelbase in (cm)	D	112 (285)

REACH

Drive Axle To Carriage Front in (cm)	E	71 (180)
Ground Clearance in (cm)	F	17 (42)
Tread Width in (cm)	G	72 (182)
Side Leveling		+ / - 6°
Shipping Weight lb (kg)**		18,275 (8307)

TURNING RADIUS

Inside / Outside in (cm)		54 (137) / 157 (400)
--------------------------	--	----------------------

ENGINE

Make / Model	Perkins 1104C-44 Turbocharged
Horsepower hp (kW)	100 (74.5)
Torque ft-lb (Nm)	304 (412)
Fuel / Cooling	Diesel / Liquid
Fuel Tank Capacity gal (L)	38.3 (145)

TRANSMISSION

Type	2-speed hydrostatic with inching
Two Driving Modes	Working / Travel
Working Speed (fwd & rev) mph (km/h)	4.7 (7.6)
Travel Speed (fwd & rev) mph (km/h)	18.4 (29.6)

DRIVE AXLES

Front & Rear / Type	All-wheel drive / Planetary steering
---------------------	--------------------------------------

BRAKES

Service	Multiple, wet disc
Parking	Spring-applied, hydraulic pressure-released
Hydraulic Control	Boom lift, telescope, carriage rotate, & auxiliary boom circuit controlled by single joystick

TIRES

Make / Model	Titan / Lift Rigger
Front & Rear	13.00 x 24 12PR G2
Ballast	Not required

STEERING

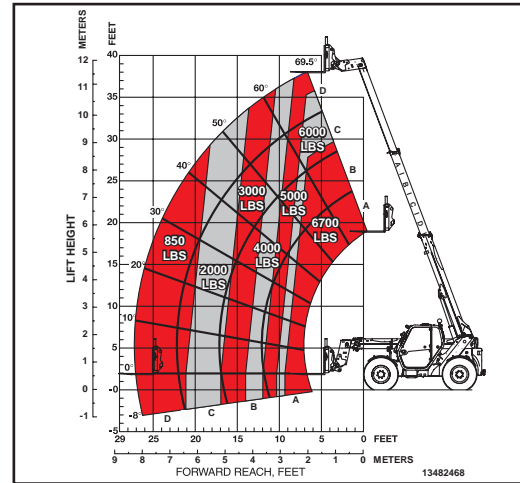
Three Modes	2-wheel, 4-wheel, or crab
-------------	---------------------------

ELECTRICAL

Ground	Negative
Alternator (amps)	100
Battery V (CCA)	12 (900)
Back-up Alarm (dBA)	102

* Vehicle dimensions with 24 in (600 mm) load center.

** Lightest machine — no attachment, air-filled tires, and open ROPS.



RATED LOAD CAPACITY

Boom Retracted @ Max Angle lb (kg)	6,700 (3045)
Boom Extended @ Max Angle lb (kg)	5,000 (2273)
Boom Extended @ Max Reach lb (kg)	850 (386)

OPERATING SPECIFICATIONS

Max Lift Capacity lb (kg)	6,700 (3045)
Max Lift Height ft (cm)	38' 11" (1185)
Max Forward Reach ft (cm)	
From Front Of Tires To 24" Load Center	26' 11" (820)
Practical Placement Height ft (cm)	36' 2" (1103)
Max Reach Practical Placement Height ft (cm)	10' 6" (320)
Max Vertical Reach Below Grade ft (cm)	3' 3" (100)
Max Reach @ Max Height ft (cm)	
From Front Of Tires To 24" Load Center	6' 5" (195)
Breakout Force lb (kN)	12,589 (5600)
Drawbar Pull lb (kN)	10,566 (4700)

BOOM

Boom Type	3-Stage
Boom Angles	Up: 69.5° Down: -8°
Extend Speed / Retract Speed (sec)	13 / 11.5
Boom Lift Speed / Boom Lower Speed (sec)	10 / 5.5
Carriage Rotation	145°

Note: Capabilities are to ASME B56.6 – 2002.

Product improvement is a continuing goal at Ingersoll-Rand. Designs and specifications are subject to change without notice or obligation.

OPTIONS / ACCESSORIES

- All-weather cab w/ heat and air-conditioning
- Fenders
- Road and work lights
- Rotating beacon
- Single auxiliary hydraulics
- Trailer hitch
- Windshield guard
- Mitas 15.5 x 24 R2 tires



www.irco.com

(877) IR BRAND

© 2004 Ingersoll-Rand Co.

Form 07-0033
Printed in USA 10-04
Courtesy of CraneMarket