

# VR-723 Material Handler



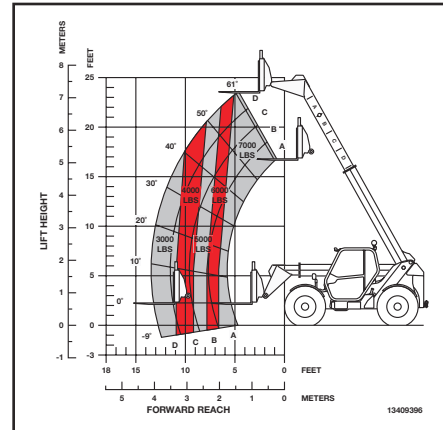
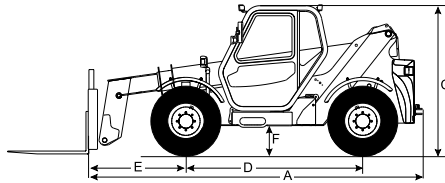
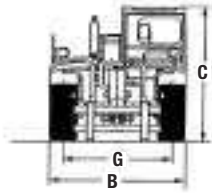
## Powerful and Productive

With exceptional break-out force, speed and versatility, this material handler loads, digs, grades and places material. Plus, it allows the operator to easily change out attachments without leaving the cab. Ingersoll-Rand machines carry more weight throughout their load zones than competitive models, while offering more responsive handling and greater agility moving around the jobsite. Stability, capacity, reach and strength — by every measure, these machines excel.



# VR-723 Material Handler

## Specifications



### MODEL VR-723

#### SIZE / DIMENSIONS

|                                     |   |            |
|-------------------------------------|---|------------|
| Overall Length (less forks) in (cm) | A | 201 (510)  |
| Overall Width in (cm)               | B | 87.2 (222) |
| Overall Height in (cm)              | C | 90 (230)   |
| Wheelbase in (cm)                   | D | 112 (285)  |

#### REACH

|                                      |   |               |
|--------------------------------------|---|---------------|
| Drive Axle to Carriage Front in (cm) | E | 58 (146)      |
| Ground Clearance in (cm)             | F | 17 (42)       |
| Tread Width in (cm)                  | G | 72 (182)      |
| Side Leveling                        |   | + / - 6°      |
| Shipping Weight lb (kg)              |   | 15,950 (7250) |

#### TURNING RADIUS

|                 |           |
|-----------------|-----------|
| Inside in (cm)  | 54 (137)  |
| Outside in (cm) | 154 (390) |

#### ENGINE

|                    |   |
|--------------------|---|
| Make / Model       | Perkins / 1104C-44T turbocharged diesel |
| Horsepower hp (kW) | 100 (74.5) @ 2,200 rpm                  |
| Torque ft-lb (Nm)  | 304 (412) @ 1,400 rpm                   |

#### TRANSMISSION

|                                      |                    |
|--------------------------------------|--------------------|
| Type                                 | Hydrostatic        |
| Two Driving Modes                    | Working / travel   |
| Working Speed (fwd & rev) mph (km/h) | 0 - 4.6 (0 - 7.39) |
| Travel Speed (fwd & rev)             | 0 - 15.4 (0 - 25)  |

#### DRIVE AXLES

|              |                    |
|--------------|--------------------|
| Front & Rear | All-wheel drive    |
| Type         | Planetary steering |

#### BRAKES

|         |  |
|---------|--|
| Service | Internal wet disc                            |
| Parking | Internal — spring applied, hydraulic release |

#### TIRES

|              |                        |
|--------------|------------------------|
| Make / Model | Titan / Lift Rigger II |
| Front & Rear | 400 / 70 x 20 — 166A2  |
| Ballast      | Not required           |

#### STEERING

|             |                          |
|-------------|--------------------------|
| Three Modes | 2-wheel, 4-wheel or crab |
|-------------|--------------------------|

#### ELECTRICAL

|                 |         |
|-----------------|---------|
| Negative Ground | 12V     |
| Alternator      | 100A    |
| Battery         | 900A    |
| Back-up Alarm   | 102 dBA |

Product improvement is a continuing goal at Ingersoll-Rand. Designs and specifications are subject to change without notice or obligation.

#### RATED LOAD CAPACITY

|                                    |              |
|------------------------------------|--------------|
| Boom Retracted @ Max Angle lb (kg) | 7,000 (3182) |
| Boom Extended @ Max Angle lb (kg)  | 7,000 (3182) |
| Boom Extended @ Max Reach lb (kg)  | 3,000 (1364) |

#### OPERATING SPECIFICATIONS

|  |              |
|--|--------------|
| Max Lift Capacity lb (kg)                    | 7,000 (3182) |
| Max Lift Height ft (cm)                      | 23' 4" (712) |
| Max Forward Reach ft (cm)                    |              |
| From Front of Tires to 24" Load Center       | 13' 4" (406) |
| Practical Placement Height ft (cm)           | 21' (640)    |
| Max Reach Practical Placement Height ft (cm) | 7' 2" (219)  |
| Max Vertical Reach Below Grade in (cm)       | 15" (37)     |
| Max Reach @ Max Height ft (cm)               |              |
| From Front of Tires to 24" Load Center       | 4' 6" (137)  |
| Break-out Force lb (kN)                      | 11,885 (53)  |
| Drawbar Pull lb (kN)                         | 10,341 (46)  |

#### BOOM

|                   |                   |
|-------------------|-------------------|
| Boom Type         | 2-Stage           |
| Boom Angles       | Up: 62° Down: -9° |
| Extend Speed      | 6.9 seconds       |
| Retract Speed     | 5.6 seconds       |
| Boom Lift Speed   | 7.5 seconds       |
| Boom Lower Speed  | 4.6 seconds       |
| Carriage Rotation | 154°              |

Note: Capacities are to ASME B56.6-2002

#### OPTIONS / ACCESSORIES

- Air-conditioned cab
- Rotating beacon

