

IMHC 1580

OUTREACH (RADIUS): 10 - 40 m
MAX CAPACITY: 80 t



IMHC 1580

Ideally suitable for feeder and medium sized vessels, the IMHC 1580 is built for fast and efficient handling of bulk, coils and containers (telescopic 20' or 40' spreader).

The crane is built in two variants:

1. Single winch with 2 ropes
2. Double winch with 4 ropes (4-ropes grab crane)

GENERAL DIMENSIONS AND WEIGHTS

A	Minimum outreach/Radius	11 m
B	Maximum outreach/Radius	40 m
C	Overall height tower	27,5 m
D	Tower cab height (operator eye level)	18 m
E	Height of boom fulcrum	15 m
	Total Weight (approx.)	290 t

HOISTING HEIGHTS

F	Above quay level until 22 m	61,5 m
G	Above quay level at max. rad.	25 m
H	Under quay level	15 m

CHASSIS AND PROPPING SYSTEM

I	Overall width of undercarriage	4,5 m
L	Minimum overall width outriggers	6,8 x 11 m
M	Maximum Propping base	11 x 11 m
	Chassis dimensions in travel mode (approx.)	16 x 8,3 m

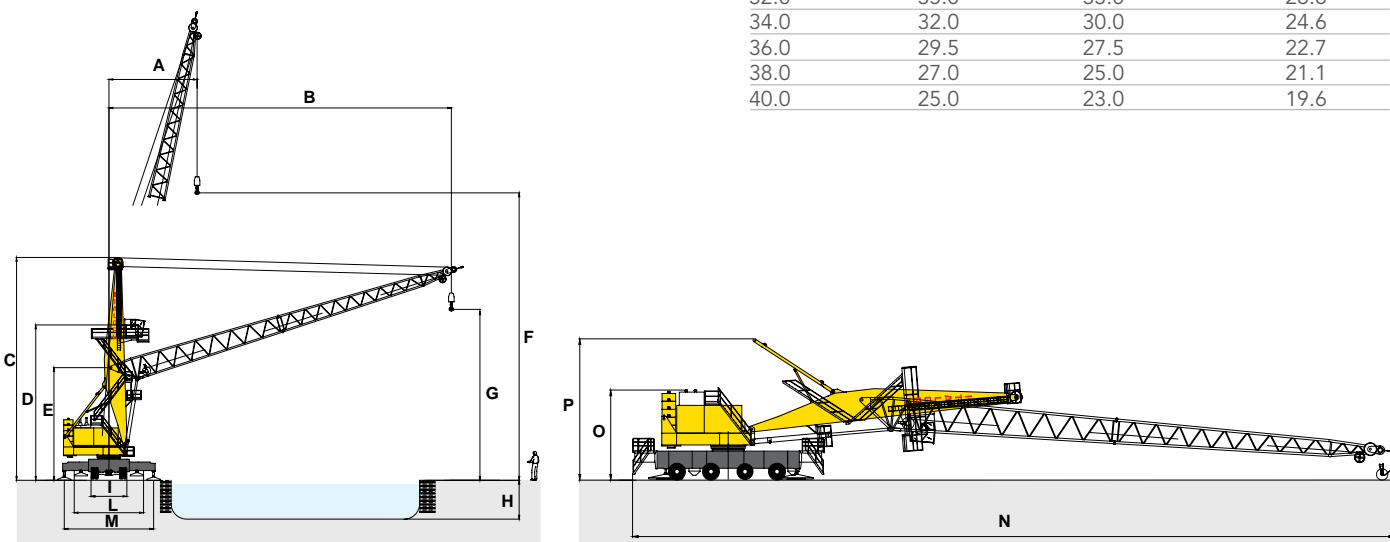
DIMENSIONS WITH TOWER AND BOOM LOWERED

N	Overall length 4	66,6 m
O	Machinery 6,5 m house height	8 m
P	Overall height	12,4 m

TRAVEL GEAR

Axles	4
Steering axles	4
Driven axles	2

OUTREACH/ RADIUS	HEAVY USE	GENERAL CARGO CONTAINERS	GRAB USE
m	t Under hook	t Under hook	t Under ropes
10.0	80.0	50.0	42.0
12.0	80.0	50.0	42.0
14.0	80.0	50.0	42.0
16.0	80.0	50.0	42.0
18.0	79.4	50.0	42.0
20.0	67.7	50.0	42.0
22.0	58.6	50.0	42.0
24.0	51.4	45.3	39.9
26.0	46.0	43.5	35.7
28.0	42.0	40.0	32.2
30.0	38.5	36.5	29.3
32.0	35.0	33.0	26.8
34.0	32.0	30.0	24.6
36.0	29.5	27.5	22.7
38.0	27.0	25.0	21.1
40.0	25.0	23.0	19.6



Other dimensions, lifting capacities, working speeds and equipments are available on request.

**CONTACT**

Tel. +39 - (0) 35.49.32.411
Fax +39 - (0) 35.49.32.409
info@italgru.com / www.italgru.com