

Model G10-55A TELEHANDLER



Performance

Rated Capacity

At 24 in. (610 mm) load center,
10,000 lb (4,536 kg)

Maximum Lift Height

55 ft (16.8 m)

Frame Leveling

10 degrees

Lift Speed (boom retracted)

Up: 14.6 sec
Down: 15.8 sec

Boom Speed

Extend: 17.3 sec
Retract: 16.8 sec

Travel Speed Forward

20 mph (32 kmph)

Drawbar Pull (loaded)

20,000 lb (9,072 kg)

Operating Weight

With 48 in. (1.2 m) carriage and forks,
34,400 lb (15,604 kg)

Standard Specifications

Engine

Make and Model	John Deere 4045TF275
	Turbocharged and Aftercooled
Fuel	No. 2 Diesel
Cycles	4
No. of Cylinders	4
Displacement	276 cu in (4.5 L)
Rated Speed	2,400 rpm
Max. Gross BHP	125 hp (93 kW)
Fuel Tank	38 gal (144 L)

Engine Filters

Two-stage dry air cleaner — centrifugal pre-cleaner with continuous dust ejector and replaceable dry filter element.

Visual service indicator.

Replaceable element-type fuel filter.

Full-flow replaceable-element engine oil filter.

Electrical System

Voltage — 12V

Alternator — 65 amp

Battery — 1050 Cold Cranking amps at 0°F

Transmission

ZF WG98 powershift with torque converter
4 speeds forward, 3 reverse.

Neutral start switch (Park brake must be engaged to start).

Full time 4-wheel drive.

Directional and gear change control on single steering mounted lever.

Axles

Trunnion mounted planetary 55° steer axles.

Integral steer cylinder.

High bias limited slip differential on front axle.

Service Brakes

Inboard wet disc brake on front and rear axles.

Parking Brakes

Wet disc spring-applied hydraulic release on front axle.

Light on dashboard indicates when brake is on.

Tires

Standard: 14:00 x 24 — 12PR, G2 type.

Optional: 14:00 x 24 — 12PR, L2 rock tires.

Cab

Certified ROPS/FOPS structure, horn and adjustable seat.

Forward, neutral, reverse lever on left of steering column.

Steering

Hydraulic power steering with manual backup.

Operator selectable 4-wheel circle, 4-wheel crab, 2-wheel front.

Instruments

Volt meter, hourmeter, engine oil pressure, temperature, fuel gauge.

All gauges protected by clear acrylic cover.

Controls

Grouped for operator comfort and convenience.

Key operated ignition/starter switch.

Boom lift, crowd and fork tilt on single joystick.

Right-hand sway and outrigger levers.

Foot throttle.

Hydraulic System-Implement

Load sense piston pump.

57 gal (215.7 L) system capacity.

10 micron filter with visual service indicator and suction strainer.

Lift, crowd, tilt, sway and outrigger cylinders have holding valves intended to prevent dropping of load in the event of hose or other hydraulic failure.

Auxiliary Hydraulics

Used for all attachments equipped with cylinders or other hydraulic components.

Consists of valves, controls, and hydraulic lines.

Accessories & Options

Cab Enclosure

Lockable, split door. Washer and windshield wiper. Heater and defroster fan.

Light Group

2 cab-mounted headlights,
1 backup/tail/stoptlight and rotating beacon.

Radial and 13:00 x 24 — 12PR, L2 Rock Tires

Attachments

Standard Carriages

48 in. (1.2 m), 66 in. (1.7 m) or
72 in. (1.8 m)

Side Tilt Carriage*

48 in. (1.2 m) or 66 in. (1.7 m)

100° Swing Carriage*

72 in. (1.8 m)

180° Swing Carriage*

72 in. (1.8 m)

Pallet Forks

2 x 4 x 48 in. (51 mm x 102 mm x 1.2 m) or
2 x 6 x 48 in. (51 mm x 152 mm x 1.2 m)

Cubing Forks

2 x 2 x 48 in.
(51 mm x 51 mm x 1.2 m)

Vertical Mast*

6 ft (1.8 m) Quick-Switch

100° Swing Mast*

Buckets

0.75 cu yd (0.57 m³)

1.25 cu yd (0.95 m³)

Truss Boom With* or Without Winch

10 ft (3.0 m) or 15 ft (4.5 m)

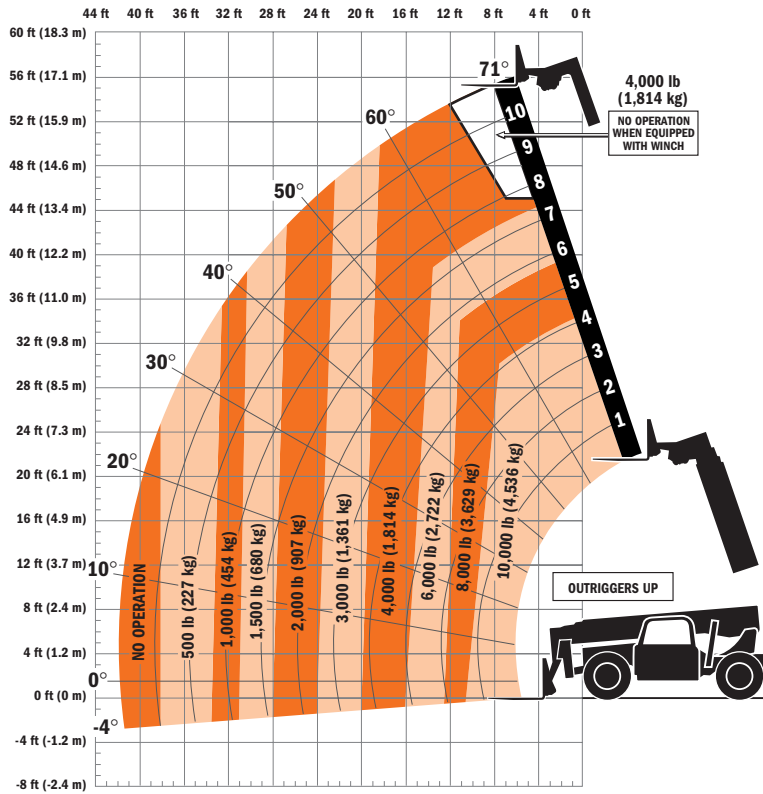
Personnel Work Platform

Instant Hook*

*Requires auxiliary hydraulics

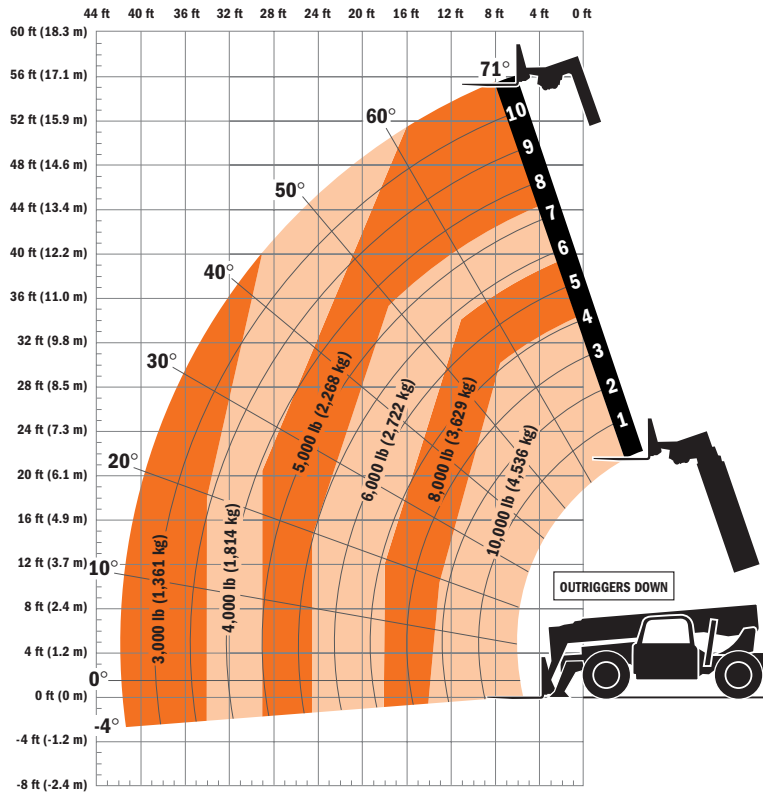


Model G10-55A TELEHANDLER



Dimensions

- Length (less forks) 240 in. (6.09 m)
- Width 101 in. (2.56 m)
- Height 101 in. (2.56 m)
- Wheelbase 144 in. (3.65 m)
- Ground Clearance 18 in. (457 mm)
- Outside Turning Radius . . 168 in. (4.27 m)
- Max. Reach from Front Tires to 24 in. (610 mm) Load Center 42 ft (12.8 m)



IMPORTANT

Rated lift capacities shown are with machine equipped with carriage and pallet forks. The machine must be level on a firm surface with undamaged, properly inflated tires. Machine specifications and stability are based on rated lift capacities at specific boom angles and boom lengths. (If specifications are critical, the proposed application should be discussed with your dealer.)

DO NOT exceed rated lift capacity loads, as unstable and dangerous machine conditions will result.

DO NOT tip the machine forward to determine the allowable load.

Use only JLG approved attachments with proper material handler model/attachment load capacity charts displayed in the operator's cab. OSHA requires all rough terrain forklift operators be trained according to OSHA 29 CFR 1910.178 (L).



JLG Industries, Inc.
 1 JLG Drive
 McConnellsburg, PA 17233-9533
 Telephone 717-485-5161
 Toll-free in US 877-JLG-LIFT
 Fax 717-485-6417
 www.jlg.com

Due to continuous product improvements, JLG Industries reserves the right to make specification and/or equipment changes without prior notification. This machine meets or exceeds ASME B56.6-2002 as originally manufactured for intended applications.

Form No.: SS-G642A-0204-10M
 Part No.: 3132210
 Printed in USA