

MC32S

ELECTRIC BATTERY OPERATED RADIO CONTROLLED CRANE
MAX CAPACITY 7,040 lbs



Pick&Carry Cranes

Edition 01/2016
© 2016 JMG Cranes srl. All rights reserved



JMG Cranes s.r.l. a socio unico

"Società sottoposta ad attività di direzione e coordinamento di Compart Italia srl"

Sede Legale: Via Dante, 15 - 26100 CREMONA | Uffici e stabilimento: Via Sito Nuovo, 14 - 29010 Sarnato - PC - Italy
C.F. e p.iva 05896090965 | Capitale Sociale Euro 84.000,00 i.v.
T +39 0523 8486 | F. +39 0523 848000 | E. info@jmgcranes.com | www.jmgcranes.com



MC32S 7,040 lbs

DRIVING:	Front by nr. 2 electric motors 3kW 48V AC controlled by inverter, insulation class H
BATTERY:	48V 500Ah. Battery meter indicator on dashboard. Autonomy: 8 working hours
BRAKE:	Automatic braking system on front wheels. Parking brake on all wheels
CONTROL:	Operated by radio remote control console allowing (whilst the crane is static) the simultaneous and proportional control of the crane driving and steering; boom telescoping, up/down and additional options if present
FRAME:	Fabricated from preformed and welded quality steel plate
WHEELS:	Front nr. 2 superelastic 200/50-10" Rear nr. 2 superelastic 16x6-8"
BOOM:	4 elements boom, hydraulically telescoping, fabricated from preformed and welded quality steel plate. Boom angle +60°/-15°
REMOVABLE COUNTERWEIGHTS:	Designed for fast assembly and disassembly, to optimise the load on the axles and the ground pressure
HYDRAULIC SYSTEM:	Powered by a silenced gear pump (9kW). Actuators controlled by an electro distributor operated by radio control, filter and safety valve. 22 MPa working pressure
STEERING:	Rear by electric motor, steering angle 90°+90°. Counter rotational system on front wheels
MOTOR PUMP:	Electric motor 9kW 48V AC, insulation class H
L.M.I.:	Electronic load moment indicator system complying to CE safety standards, complete with display showing: load lifted, maximum admitted load, tilting percentage, operating radius, angle, outreach and complete with warning lights of the operating status
WEIGHT:	lbs 6,600 including lbs 880 of removable counterweight
OPTIONS ON REQUEST:	Hydraulic winch, manually or hydraulically bending jib, men basket, chain hoist, fork attachment, on board battery charger, watering system for battery, ATEX conversions, customer colour, non-marking tires
CRANE CLASSIFICATION ACCORDING TO UNI ISO 4301-1:	A3
EU STANDARDS CE:	2006/42 CE MD - 2004/108 CE EMC - 2006/95 CE LVD - 2000/14 CE and subsequent modifications
REFERENCE STANDARDS:	EN 13000: 2010 UNI ISO 4301- 2:2011 and subsequent modifications



STEERING 90°+90° AND COUNTER ROTATION SYSTEM ON FRONT WHEELS



RADIO REMOTE CONTROL

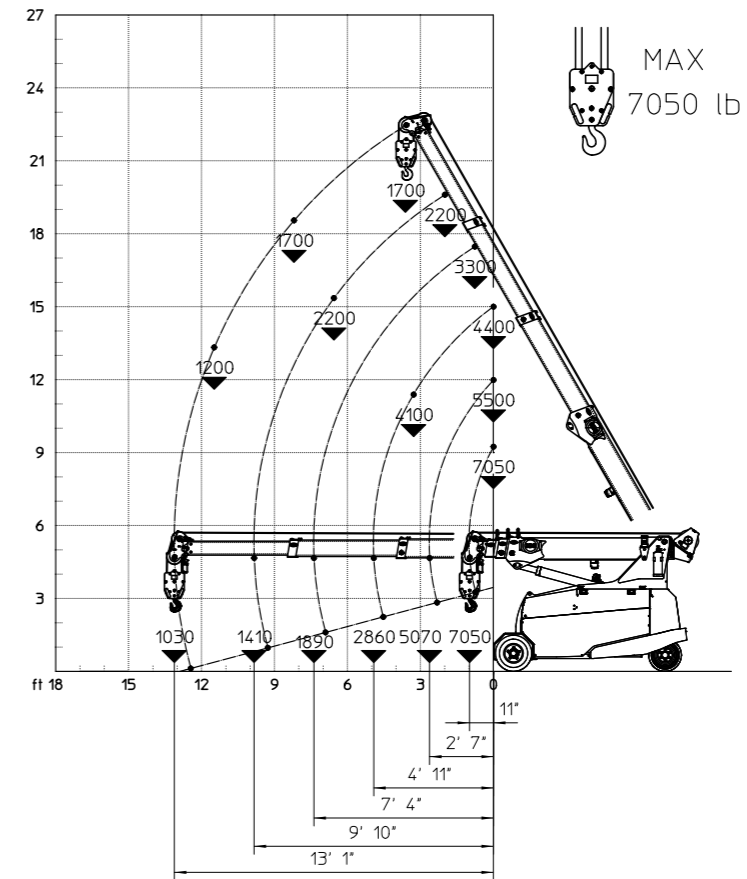


COMPACT DIMENSIONS



REMOVABLE COUNTERWEIGHTS

LOAD CHART HYDRAULIC WINCH



in-lbs

DIMENSIONS

