

167-232 NET HORSEPOWER



**JOHN DEERE**

**J**

**WASTE HANDLERS**

544J | 624J | 644J



## 544J Waste Handler

167 net hp @ 1,900 rpm  
4.0–5.0-cu.-yd. buckets  
22,090-lb. full-turn tipping load  
21,117-lb. breakout force  
34,768-lb. operating weight



# Haste moves waste.

If it's a highly productive waste handler you want, get a John Deere J-Series. These nimble and quick machines come loaded with the survival gear they need to tackle transfer-station tasks, day after day. An innovative Quad-Cool™ system with proportional fan ensures that everything keeps cool. Extensive guarding minimizes debris build-up and helps keep

close encounters with obstacles from slowing you down. And a solid-state electrical distribution center, durable sealed switch module, and state-of-the-art diagnostic multi-function monitor further boost uptime and productivity. That's just the beginning. Read on to learn all the ways the J-Series Waste Handlers help take out the trash.



### 624J Waste Handler

198 net hp @ 1,800 rpm  
4.0–6.0-cu.-yd. buckets  
26,208-lb. full-turn tipping load  
29,774-lb. breakout force  
39,414-lb. operating weight

### 644J Waste Handler

232 net hp @ 1,700 rpm  
5.0–7.0-cu.-yd. buckets  
32,514-lb. full-turn tipping load  
34,471-lb. breakout force  
48,050-lb. operating weight

Purpose-built John Deere waste handlers come fully equipped with everything they need to survive and thrive in hostile wastelands.

Unique Quad-Cool™ package helps these three keep their cool under grueling conditions.

John Deere diesels deliver an impressive rise of 38% in the 544J, and 55% in the 624J and 644J. For pull-through power when the going gets tough.

Same-side ground-level daily service access makes routine tasks quick and easy. Extended service intervals and large fuel tanks further maximize uptime.

Heavy-duty waste-handler buckets range from 4–7 cubic yards. Third-function hydraulic valve is available for use with grapple buckets.

Optional high-lift booms increase dump height so you can move materials and push productivity to even greater heights.

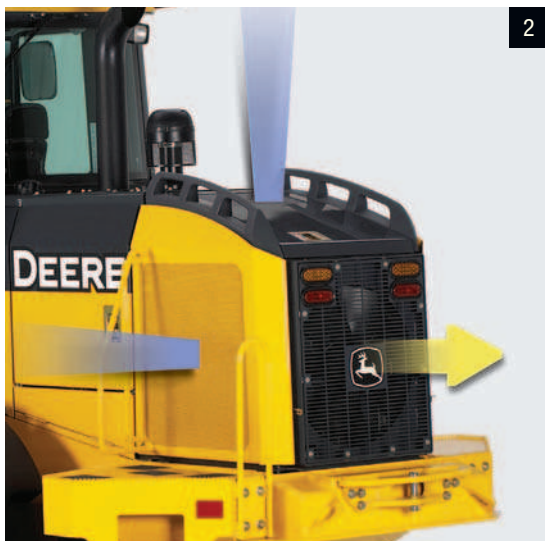
Choose the axles that are right for you. Hydraulic front differential lock and conventional rear is standard; front and rear hydraulic differential is available.

Transmission oil cooler has its own air-intake screen for more efficient cooling.

Three-millimeter perforations act as a "first filter," preventing entry of most airborne debris. Anything that gets through the side screens easily passes through the cooler cores.

There are no stacked cores in these waste handlers. Both sides of all coolers are easily accessible. Plus the hinged grill and fan swing open a full 90 degrees, further simplifying clean out.

1. Fan automatically reverses to help eliminate cooler-clogging buildup. Or press a button to actuate cleaning cycles as needed.
2. Quad-Cool™ system places the radiator, intercooler, air-conditioner condenser, and transmission and optional axle coolers in an independent package. Outside air flows through the perforated top, side panels, and coolers, and out the rear instead of drawing air through the engine compartment, for increased efficiency and durability.



# Stay cool under pressure.



You know the drill. Refuse works its way into everything — clinging to intake screens, plugging coolers, filling engine compartments, and causing overheating. But these waste handlers are built to work long and hard without breaking a sweat. Their unique Quad-Cool™

system places everything in an easy-to-clean package, effectively isolating critical cooling components from engine heat. What's more, a hydraulically driven fan automatically reverses to eject debris build-up. For cool-running efficiency, regardless of what's underfoot — or in the air.

# On guard.



You won't have to worry about these waste handlers getting trashed too soon. Working closely with waste-handling professionals, Deere engineers gave the J-Series the toughness needed to survive a hostile world of garbage and

grit. From the high-visibility window bars to the hydraulic belly pans, all vulnerable machine components are guarded to protect them from trash infiltration and impact damage. So the daily grind doesn't grind you to a halt.



Extreme-duty front loader frame cover, lower loader frame guard, transmission side covers, and boom cylinder and hydraulic line guards give additional impact and debris resistance.

Window bars provide glass protection without obstructing visibility.

ROPS-mounted strobe light alerts bystanders; folds down for additional overhead clearance.

Extreme-duty steps take abuse and come back for more.

Guards help keep grease zerks intact and unobstructed so greasing gets done.

Axle guards help insulate the seals and resist refuse wrapping.

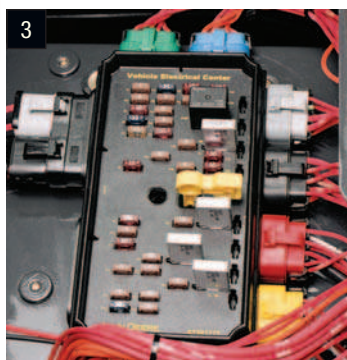
Access platform simplifies engine access and helps protect rear axle.

Self-adjusting wet-disc brakes are mounted inboard where they run cool, clean, and unexposed to corrosive materials. Brake lines are equally protected.

Bolt-on or optional hydraulic belly pans deliver unmatched protection to the fuel tank and drivetrain. Hydraulic version eases clean-out.

Optional front striker bars shed material from the tires.

1. Self-cleaning shields protect the boom cylinders by ejecting waste every time the boom is raised.
2. Articulation joint shields and driveshaft guards help resist trash build-up.
3. Electrical distribution center employs extremely reliable circuit-board technology and solid-state switches, eliminating the need for a multitude of wiring harnesses, fuses, relays, and connections.
4. Planetary final drives are mounted inboard. Since gear size isn't limited by wheel hub diameter, larger, more durable components are utilized.



Quad-Cool™ system keeps the radiator, air-conditioner condenser, inter-coolers; and hydraulic, transmission, and axle cooler isolated from engine heat for increased efficiency and durability.

Hydraulically driven variable-speed fan runs only as needed to help maximize fuel efficiency and reduce noise.

Extended service intervals and large fuel tanks help maximize uptime.

Both sides of all coolers are easily accessible, for quick and easy clean-out.

Large hinged doors open wide, providing quick and easy access to the engine and Quad-Cool system.

Corrugated fine-mesh screen air cleaner efficiently filters the airflow.



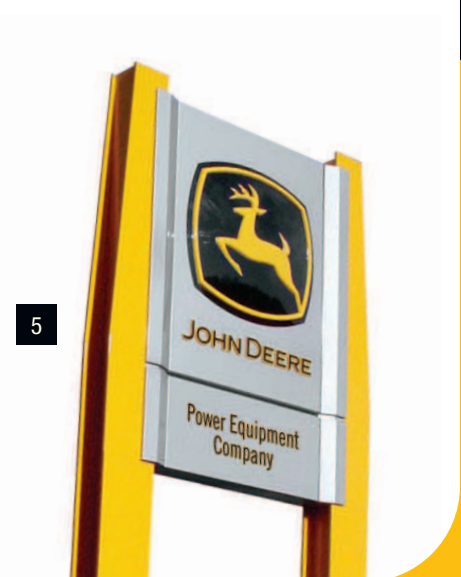
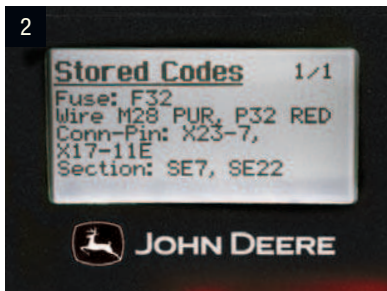


# Get the lowdown on the J-Series' daily operating costs.

When it comes to helping you control daily operating costs, we're open to new ideas — and the J-Series is loaded with them. Like the Quad-Cool™ system, for example. But we didn't stop there. Service intervals have been extended, and same-side ground-level service

points help make quick work of the daily routine. Hinged side shields open wide, providing quick and ample access to dipsticks, vertical spin-on filters, and sight gauges. These and other timesaving advantages help minimize down-time and expense.

1. Vertical fuel and oil filters allow quick and easy, no-spill changes.
2. If something goes wrong, an advanced monitor gives easy-to-understand diagnostic messages and even offers possible solutions to minimize downtime.
3. Conveniently located sight gauges let you check fluid levels at a glance.
4. Centralized lube banks make greasing less messy.
5. Your John Deere dealer has the parts and service you need, including a wide variety of preventative maintenance programs.



Standard air-ride armchair seat adjusts multiple ways for extra comfort.

Independently adjustable louvers and defrosters provide effective airflow to help keep the glass clear and pressurized cab comfortable. Activated- carbon fresh-air filter reduces odors.

Choose either joystick or two-lever pilot-operated control.

Deere's PowerShift™ torque-converter transmission employs Smart-Shift™ technology to ensure smooth-as-silk gear changes.

Responsive steering and full 80-degree articulation increase maneuverability in tight quarters — for fast cycles and fewer three-point turns.

Return-to-carry, boom height kickout, and return-to-load are set with just a touch of a button. These advantages help speed production in repetitive loading applications.

Industry-leading 360-degree visibility gives a clear view of the work ahead and obstacles around you.



1. Advanced, multi-language monitor with analog gauges and LED indicators provides:

Vital and general operating information including transmission mode, gear, engine rpms, and ground speed.

Diagnostic readings of most sensors and switches, enabling technicians to quickly troubleshoot problems.

Customized machine settings that allow the operator to match the loader's operating characteristics to specific applications by preselecting transmission functions such as Quick-Shift and Auto-to-1st for maximum productivity.

2. Conveniently positioned switch module helps reduce operator fatigue with clearly visible backlit and sealed controls.
3. In-cab lockable master switch makes it easy to disconnect electrical power.





# Hard work never felt this easy.

---

From the convenient controls that let you customize machine operation, to the comfortable fully adjustable armchair seat — the J-Series Loaders have everything your operators need to stay alert and productive. All-around visibility is exceptional, offering clear sight lines of the work area and obstacles around you. And an

efficient HVAC system helps keep the view clear, the environment comfortable. A sealed switch module allows convenient, fingertip control of multiple machine operations. Up front, a state-of-the-art multi-function monitor with easy-to-read gauges and messaging provides vital operating info at a glance.

---



# DEERE Specifications

## Engine **544J WH**

Manufacturer and Model	John Deere PowerTech™ 6068H
Non-Road Emission Standards	certified to EPA Tier 3 emissions
Cylinders	6
Displacement	414 cu. in. (6.8 L)
Net Peak Power (ISO9249)	167 hp (125 kW) @ 1,900 rpm
Net Torque Rise	38%
Net Peak Torque (ISO9249)	496 lb.-ft. (673 Nm) @ 1,600 rpm
Lubrication	full-flow spin-on filter and integral cooler
Engine Air Pre-Cleaner	centrifugal
Air Cleaner	dual element dry type, restriction indicator in cab

## Cooling

Fan Drive	hydraulically driven, proportionally controlled, fan aft of coolers
Fan Type	blower with reverser valve; selectable timer can be actuated by switch in cab
Engine Coolant Rating	-34 deg. F (-37 deg. C)
Engine Radiator	7.5 fins per in. (water to air)
Hydraulic Cooler	6.3 fins per in. (oil to air)
Charge Air Cooler	6.3 fins per in. (air to air)
Transmission Oil Cooler	6.3 fins per in. (oil to air)
Axle Cooler (option)	6 fins per in. (oil to air)

## Powertrain

Countershaft-type PowerShift™ transmission; single-stage, single-phase torque converter; steering-column- or joystick-mounted F-N-R and gear-select lever; kick-down button on hydraulic lever		
Number of Gears Forward	3	
Number of Gears Reverse	3	
Shift Control	electronically modulated, adaptive, load and speed dependent	
Shift Modes	quick-shift button with 2 selectable modes: auto/manual, auto to 1st or 2nd, kick down or kick up/down, 3 clutch cutoff settings adjustable on switch pad	
Travel Speeds With 20.5-25 Solid Rubber Tires	<i>Forward Maximum Speed</i>	<i>Reverse Maximum Speed</i>
Gear 1	4.3 mph (6.9 km/h)	4.5 mph (7.2 km/h)
Gear 2	7.4 mph (11.9 km/h)	7.8 mph (12.6 km/h)
Gear 3	14.2 mph (22.9 km/h)	15.0 mph (24.1 km/h)
Transmission Clutch Disconnect	3 selectable settings on the switch pad	

## Axles

Rear Axle Oscillation, Stop to Stop . . . . . 16 deg.

**Differentials** . . . . . hydraulic multi-disk 100% locking front with conventional rear – standard; hydraulic multi-disk 100% locking front and rear – optional

## Steering

Power, Fully Hydraulic (SAE J1511) . . . . . single-lever control with adjustable wristrest

Articulation Angle . . . . . 80-deg. arc (40 deg. each direction)

**Final Drive** . . . . . heavy-duty inboard-mounted planetary

Guard . . . . . bolt-on, axle seal guard

**Brakes** (conform to SAE J1473, ISO3450)

Service Brakes . . . . . hydraulically actuated, inboard sun-shaft mounted, oil cooled, self-adjusting, single-disc

Parking Brake . . . . . automatic spring applied, hydraulically released, driveline mounted, oil cooled, multi-disc

## Hydraulics

Main Pump (loader and steering) . . . . . variable-displacement, axial-piston pump; closed-center, pressure-compensating system

Rated rpm . . . . . 2,350

Maximum Rated Flow @ 1,000 psi (6895 kPa) . . . . . 50 gpm (189 L/m)

System Relief Pressure, Loader and Steering . . . . . 3,650 psi (25 166 kPa)

**Hydraulic Cycle Time** *Standard Z-Bar Linkage* *High-Lift Z-Bar Linkage*

Raise . . . . . 5.8 sec. 5.8 sec.

Dump . . . . . 1.2 sec. 1.2 sec.

Lower (float down) . . . . . 3.2 sec. 3.2 sec.

Lower (power down) . . . . . 3.3 sec. 3.3 sec.

Total . . . . . 10.2 sec. 10.2 sec.

## Turning Radius

Measured to Centerline of Outside Tire . . . . . 16 ft. 3 in. (4.95 m)

**Controls** . . . . . 2-function valve; single- or dual-lever controls; control lever lockout feature; optional third- and fourth-function valve with auxiliary lever

**Electrical**

**544J WH**

Electrical distribution center with solid-state switches and circuit-board technology

Voltage	24 volts
Number of Batteries (12 volt)	2
Battery Capacity	950 CCA
Reserve Capacity	200 min.
Alternator Rating	80 amp
Lights (SAE 99)	driving lights with guard, turn signals, and flashers; stop and taillight
Work Lights	front (2), rear (2)

**Tires/Wheels**

	<i>Tread Width</i>	<i>Width Over Tires</i>
With 20.5 x 25 Solid Rubber Tires	6 ft. 5 in. (1951 mm)	8 ft. 1 in. (2466 mm)

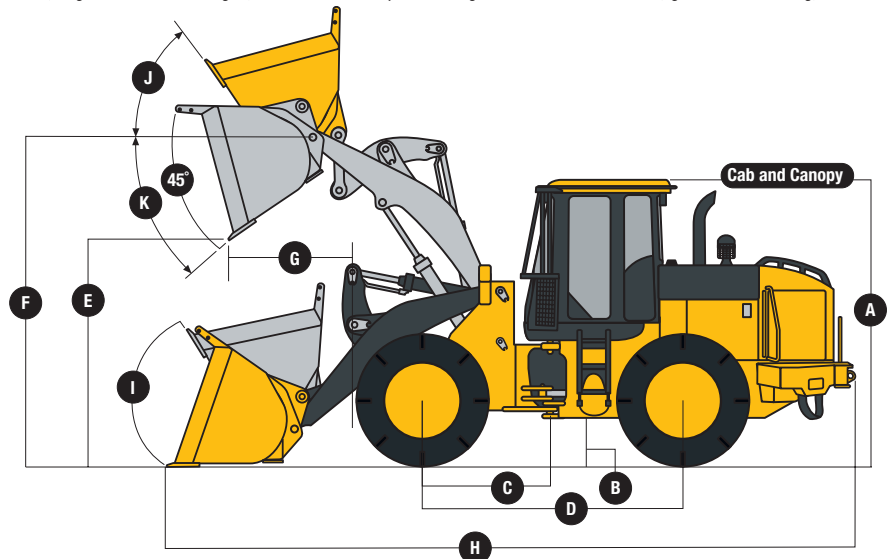
**Serviceability**

Hinged bottom access covers (bolt-on); bottom protection, integral in mainframe; engine side shields hinged, fan door and fan opens 90 deg. for full access to coolers; ground-level fueling; remote grease bank for front axle; hydraulic "O"-ring face seal connectors

<b>Fluid-Change Interval</b>	<i>Hours</i>
Engine Oil	500
Park Brake Oil	1,000
Hydraulic Oil	4,000
Axle Oil	2,000

**Refill Capacities**

Axle Oil (front and rear)	18 qt. (17 L)
Wet-Disc Parking Brake Oil	10 oz. (0.3 L)
Cooling System	23 qt. (22 L)
Engine Oil With Vertical Spin-On Filter	22.2 qt. (21 L)
Fuel Tank	85 gal. (322 L)
Hydraulic Reservoir and Filters	25.5 gal. (96.5 L)
Transmission Fluid With Vertical Filter	19.5 qt. (18.5 L)



**Operating Weights**

All configurations include weight with complete waste-handler protection, 20.5 x 25 solid rubber tires, cab, full fuel tank, and 175-lb. (79 kg) operator

	<i>Standard Z-Bar Linkage</i>		<i>High-Lift Z-Bar Linkage</i>	
	<i>4.0 cu. yd. (3.1 m³)</i>	<i>5.0 cu. yd. (3.8 m³)</i>	<i>4.0 cu. yd. (3.1 m³)</i>	<i>5.0 cu. yd. (3.8 m³)</i>
Standard-Lip Bucket	34,768 lb. (15 771 kg)	35,360 lb. (16 039 kg)	34,970 lb. (15 862 kg)	35,560 lb. (16 130 kg)

**Machine Dimensions**

	<i>Standard Z-Bar Linkage With Pin-On Bucket</i>		<i>High-Lift Z-Bar Linkage With Pin-On Bucket</i>	
	<i>4.0-cu.-yd. (3.1 m³) Bucket</i>	<i>5.0-cu.-yd. (3.8 m³) Bucket</i>	<i>4.0-cu.-yd. (3.1 m³) Bucket</i>	<i>5.0-cu.-yd. (3.8 m³) Bucket</i>
<b>A</b> Height to Top of Cab and Canopy	10 ft. 10 in. (3.30 m)	10 ft. 10 in. (3.30 m)	10 ft. 10 in. (3.30 m)	10 ft. 10 in. (3.30 m)
<b>B</b> Ground Clearance	18 in. (0.46 m)	18 in. (0.46 m)	18 in. (0.46 m)	18 in. (0.46 m)
<b>C</b> Length from Centerline to Front Axle	4 ft. 9 in. (1.45 m)	4 ft. 9 in. (1.45 m)	4 ft. 9 in. (1.45 m)	4 ft. 9 in. (1.45 m)
<b>D</b> Wheelbase	9 ft. 6 in. (2.90 m)	9 ft. 6 in. (2.90 m)	9 ft. 6 in. (2.90 m)	9 ft. 6 in. (2.90 m)
<b>E</b> Dump Clearance	9 ft. 0 in. (2.73 m)	8 ft. 7 in. (2.62 m)	10 ft. 1 in. (3.08 m)	9 ft. 9 in. (2.97 m)
<b>F</b> Height to Hinge Pin, Fully Raised	12 ft. 9 in. (3.89 m)	12 ft. 9 in. (3.89 m)	13 ft. 10 in. (4.22 m)	13 ft. 10 in. (4.22 m)
<b>G</b> Dump Reach	3 ft. 0 in. (0.92 m)	3 ft. 5 in. (1.04 m)	3 ft. 0 in. (0.92 m)	3 ft. 5 in. (1.04 m)
<b>H</b> Overall Length	24 ft. 5 in. (7.44 m)	24 ft. 11 in. (7.59 m)	24 ft. 6 in. (7.47 m)	26 ft. 1 in. (7.95 m)
<b>I</b> Maximum Rollback at Ground Level	35 deg.	35 deg.	35 deg.	35 deg.
<b>J</b> Maximum Rollback at Full Height	51 deg.	51 deg.	51 deg.	51 deg.
<b>K</b> Maximum Dump Angle at Full Height	49 deg.	49 deg.	49 deg.	49 deg.
Capacity, Heaped SAE (with bolt-on cutting edge)	4.0 cu. yd. (3.1 m³)	5.0 cu. yd. (3.8 m³)	4.0 cu. yd. (3.1 m³)	5.0 cu. yd. (3.8 m³)
Capacity, Struck SAE	3.5 cu. yd. (2.7 m³)	4.36 cu. yd. (3.3 m³)	3.5 cu. yd. (2.7 m³)	4.36 cu. yd. (3.3 m³)
Breakout Force (SAE J732C)	21,117 lb. (9579 kg)	18,262 lb. (8284 kg)	19,371 lb. (8787 kg)	16,721 lb. (7586 kg)
Tipping Load, Straight	25,097 lb. (11 384 kg)	23,576 lb. (10 697 kg)	22,297 lb. (10 114 kg)	21,008 lb. (9529 kg)
Tipping Load, 40-deg. Full Turn, SAE	22,090 lb. (10 020 kg)	20,674 (9380 kg)	19,572 lb. (8878 kg)	18,362 lb. (8329 kg)
Bucket Weight	3,200 lb. (1451 kg)	3,800 lb. (1724 kg)	3,200 lb. (1451 kg)	3,800 lb. (1724 kg)
Bucket Width	8 ft. 10 in. (2.69 m)	8 ft. 10 in. (2.69 m)	8 ft. 10 in. (2.69 m)	8 ft. 10 in. (2.69 m)
Reach, 45-deg. Dump, 7-ft. (2.13 m) Clearance	4 ft. 6 in. (1.38 m)	4 ft. 8 in. (1.43 m)	5 ft. 6 in. (1.68 m)	5 ft. 8 in. (1.73 m)
Loader Clearance Circle, Bucket Carry Position	38 ft. 8 in. (11.79 m)	39 ft. 0 in. (11.89 m)	39 ft. 7 in. (12.07 m)	39 ft. 11 in. (12.17 m)
<b>Lift Capacity</b>				
At Ground Line	22,436 lb. (10 177 kg)	18,619 lb. (8445 kg)	23,605 lb. (10 707 kg)	20,158 lb. (9144 kg)
At Full Height	14,103 lb. (6397 kg)	13,722 lb. (6224 kg)	12,147 lb. (5510 kg)	11,768 lb. (5338 kg)

# Specifications

**624J**  
WASTE HANDLER

## Engine 624J WH

Manufacturer and Model	John Deere PowerTech™ 6068H
Non-Road Emission Standards	complies with EPA Tier 3 regulations
Cylinders	6
Displacement	414 cu. in. (6.8 L)
Net Peak Power (ISO9249)	198 hp (147 kW) @ 1,800 rpm
Net Torque Rise	55%
Net Peak Torque (ISO9249)	617 lb.-ft. (836 Nm) @ 1,600 rpm
Lubrication	full-flow spin-on filter and integral cooler
Engine Air Pre-Cleaner	centrifugal
Air Cleaner	dual element dry type, restriction indicator in cab

## Cooling

Fan Drive	hydraulically driven, proportionally controlled, fan aft of coolers
Fan Type	blower with reverser valve; selectable timer can be actuated by switch in cab
Engine Coolant Rating	-34 deg. F (-37 deg. C)
Engine Radiator	8 fins per in. (water to air)
Hydraulic Cooler	6.3 fins per in. (oil to air)
Charge Air Cooler	6.3 fins per in. (air to air)
Transmission Oil Cooler	6.3 fins per in. (oil to air)
Axle Coolers (optional)	6 fins per in. (oil to air)

## Powertrain

Countershaft-type PowerShift™ transmission; single-stage, single-phase torque converter; steering-column- or joystick-mounted F-N-R and gear-select lever; kick-down button on hydraulic lever		
Number of Gears Forward	3	
Number of Gears Reverse	3	
Shift Control	electronically modulated, adaptive, load and speed dependent	
Shift Modes	quick-shift button with 2 selectable modes: auto/manual, auto to 1st or 2nd, kick down or kick up/down, 3 clutch cutoff settings adjustable on switch pad	
Travel Speeds With 20.5-25 Solid Rubber Tires	<i>Forward Maximum Speed</i>	<i>Reverse Maximum Speed</i>
Gear 1	4.5 mph (7.2 km/h)	4.7 mph (7.6 km/h)
Gear 2	7.7 mph (12.4 km/h)	8.1 mph (13.0 km/h)
Gear 3	15.2 mph (24.5 km/h)	16.0 mph (25.7 km/h)
Transmission Clutch Disconnect	3 selectable settings on the switch pad	

## Axles

Rear Axle Oscillation, Stop to Stop . . . . . 16 deg.

**Differentials** . . . . . hydraulic multi-disk 100% locking front with conventional rear – standard; hydraulic multi-disk 100% locking front and rear – optional

## Steering

Power, Fully Hydraulic (SAE J1511) . . . . . single-lever control with adjustable wristrest

Articulation Angle . . . . . 80-deg. arc (40 deg. each direction)

**Final Drive** . . . . . heavy-duty inboard-mounted planetary

Guard . . . . . bolt-on, axle seal guard

**Brakes** (conform to SAE J1473, ISO3450)

Service Brakes . . . . . hydraulically actuated, inboard sun-shaft mounted, oil cooled, self-adjusting, single-disc

Parking Brake . . . . . automatic spring applied, hydraulically released, driveline mounted, oil cooled, multi-disc

## Hydraulics

Main Pump (loader and steering) . . . . . variable-displacement, axial-piston pump; closed-center, pressure-compensating system

Rated rpm . . . . . 2,350

Maximum Rated Flow @ 1,000 psi (6895 kPa) . . . . . 60 gpm (227 L/m)

System Relief Pressure, Loader and Steering . . . . . 3,675 psi (24 821 kPa)

**Hydraulic Cycle Time** *Standard Z-Bar Linkage* *High-Lift Z-Bar Linkage*

Raise . . . . . 5.9 sec. 5.9 sec.

Dump . . . . . 1.3 sec. 1.3 sec.

Lower (float down) . . . . . 2.7 sec. 2.7 sec.

Lower (power down) . . . . . 3.3 sec. 3.3 sec.

Total . . . . . 9.9 sec. 9.9 sec.

## Turning Radius

Measured to Centerline of Outside Tire . . . . . 17 ft. 0 in. (5.18 m)

**Controls** . . . . . 2-function valve; single- or dual-lever controls; control lever lockout feature; optional third- and fourth-function valve with auxiliary lever

**Electrical**

**624J WH**

Electrical distribution center with solid-state switches and circuit-board technology

Voltage	24 volts
Number of Batteries (12 volt)	2
Battery Capacity	950 CCA
Reserve Capacity	200 min.
Alternator Rating	80 amp
Lights (SAE 99)	driving lights with guard, turn signals, and flashers; stop and taillight
Work Lights	front (2), rear (2)

**Tires/Wheels**

	<i>Tread Width</i>	<i>Width Over Tires</i>
With 20.5 x 25 Solid Rubber Tires	6 ft. 9 in. (2050 mm)	8 ft. 5 in. (2573 mm)

**Serviceability**

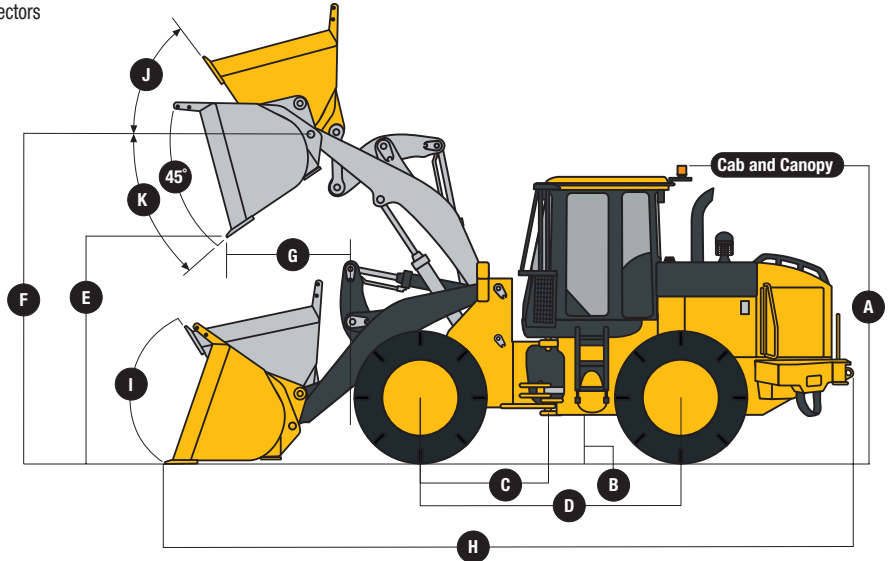
Hinged bottom access covers (bolt-on); bottom protection, integral in mainframe; engine side shields hinged, fan door and fan swing out 90 deg. for full access to coolers; ground-level fueling; remote grease bank for front axle; hydraulic "O"-ring face seal connectors

**Fluid-Change Interval** *Hours*

Engine Oil	500
Park Brake Oil	1,000
Hydraulic Oil	4,000
Axle Oil	2,000

**Refill Capacities**

Axle Oil	
Front	23 qt. (22 L)
Rear	18 qt. (17 L)
Wet-Disc Parking Brake Oil	10 oz. (0.3 L)
Cooling System	29 qt. (27 L)
Engine Oil With Vertical Spin-On Filter	22 qt. (21 L)
Fuel Tank	93 gal. (352 L)
Hydraulic Reservoir and Filters	32 gal. (119 L)
Transmission Fluid With Vertical Filter	24 qt. (23 L)



**Operating Weights**

All configurations include weight with complete waste-handler protection, 20.5 x 25 solid rubber tires, cab, full fuel tank, and 175-lb. (79 kg) operator

	<i>Standard Z-Bar Linkage</i>			<i>High-Lift Z-Bar Linkage</i>		
	<i>4.0 cu. yd. (3.1 m³)</i>	<i>5.0 cu. yd. (3.8 m³)</i>	<i>6.0 cu. yd. (4.6 m³)</i>	<i>4.0 cu. yd. (3.1 m³)</i>	<i>5.0 cu. yd. (3.8 m³)</i>	<i>6.0 cu. yd. (4.6 m³)</i>
Standard-Lip Bucket	39,414 lb. (17 878 kg)	39,762 lb. (18 036 kg)	40,264 lb. (18 264 kg)	39,715 lb. (18 015 kg)	40,065 lb. (18 173 kg)	40,565 lb. (18 400 kg)

**Machine Dimensions**

	<i>Standard Z-Bar Linkage With Pin-On Bucket</i>			<i>High-Lift Z-Bar Linkage With Pin-On Bucket</i>		
	<i>4.0-cu.-yd. (3.1 m³) Bucket</i>	<i>5.0-cu.-yd. (3.8 m³) Bucket</i>	<i>6.0-cu.-yd. (4.6 m³) Bucket</i>	<i>4.0-cu.-yd. (3.1 m³) Bucket</i>	<i>5.0-cu.-yd. (3.8 m³) Bucket</i>	<i>6.0-cu.-yd. (4.6 m³) Bucket</i>
<b>A</b> Height to Top of Cab and Canopy	11 ft. 2 in. (3.40 m)	11 ft. 2 in. (3.40 m)	11 ft. 2 in. (3.40 m)	11 ft. 2 in. (3.40 m)	11 ft. 2 in. (3.40 m)	11 ft. 2 in. (3.40 m)
<b>B</b> Ground Clearance	18.7 in. (475 mm)	18.7 in. (475 mm)	18.7 in. (475 mm)	18.7 in. (475 mm)	18.7 in. (475 mm)	18.7 in. (475 mm)
<b>C</b> Length from Centerline to Front Axle	5 ft. 0 in. (1.52 m)	5 ft. 0 in. (1.52 m)	5 ft. 0 in. (1.52 m)	5 ft. 0 in. (1.52 m)	5 ft. 0 in. (1.52 m)	5 ft. 0 in. (1.52 m)
<b>D</b> Wheelbase	9 ft. 11 in. (3.02 m)	9 ft. 11 in. (3.02 m)	9 ft. 11 in. (3.02 m)	9 ft. 11 in. (3.02 m)	9 ft. 11 in. (3.02 m)	9 ft. 11 in. (3.02 m)
<b>E</b> Dump Clearance	9 ft. 6 in. (2.90 m)	9 ft. 1 in. (2.78 m)	8 ft. 7 in. (2.61 m)	10 ft. 10 in. (3.31 m)	10 ft. 6 in. (3.20 m)	10 ft. 0 in. (3.05 m)
<b>F</b> Height to Hinge Pin, Fully Raised	13 ft. 2 in. (4.01 m)	13 ft. 2 in. (4.01 m)	13 ft. 2 in. (4.01 m)	14 ft. 4 in. (4.37 m)	14 ft. 4 in. (4.37 m)	14 ft. 4 in. (4.37 m)
<b>G</b> Dump Reach	2 ft. 11 in. (0.89 m)	3 ft. 4 in. (1.01 m)	3 ft. 10 in. (1.17 m)	3 ft. 5 in. (1.05 m)	3 ft. 10 in. (1.18 m)	4 ft. 5 in. (1.35 m)
<b>H</b> Overall Length	24 ft. 9 in. (7.54 m)	25 ft. 4 in. (7.72 m)	26 ft. 1 in. (7.95 m)	26 ft. 2 in. (7.98 m)	26 ft. 9 in. (8.15 m)	27 ft. 6 in. (8.38 m)
<b>I</b> Maximum Rollback at Ground Level	38 deg.	38 deg.	38 deg.	39 deg.	39 deg.	39 deg.
<b>J</b> Maximum Rollback at Full Height	55 deg.	55 deg.	55 deg.	49 deg.	49 deg.	49 deg.
<b>K</b> Maximum Dump Angle at Full Height	45 deg.	45 deg.	45 deg.	41 deg.	41 deg.	41 deg.
Capacity, Heaped SAE (with bolt-on cutting edge)	4.0 cu. yd. (3.1 m³)	5.0 cu. yd. (3.8 m³)	6.0 cu. yd. (4.6 m³)	4.0 cu. yd. (3.1 m³)	5.0 cu. yd. (3.8 m³)	6.0 cu. yd. (4.6 m³)
Capacity, Struck SAE	3.5 cu. yd. (2.7 m³)	4.3 cu. yd. (3.3 m³)	4.6 cu. yd. (3.5 m³)	3.5 cu. yd. (2.7 m³)	3.8 cu. yd. (2.9 m³)	4.6 cu. yd. (3.5 m³)
Breakout Force (SAE J732C)	29,774 lb. (13 505 kg)	25,567 lb. (11 597 kg)	21,300 lb. (9662 kg)	26,991 lb. (12 243 kg)	23,137 lb. (10 495 kg)	19,223 lb. (8719 kg)
Tipping Load, Straight	29,526 lb. (13 393 kg)	28,350 lb. (12 860 kg)	26,812 lb. (12 162 kg)	24,754 lb. (11 228 kg)	23,752 lb. (10 774 kg)	22,443 lb. (10 180 kg)
Tipping Load, 40-deg. Full Turn, SAE	26,208 lb. (11 888 kg)	25,118 (11 394 kg)	23,688 lb. (10 745 kg)	21,900 lb. (9934 kg)	20,967 lb. (9510 kg)	19,743 lb. (8955 kg)
Bucket Weight	3,549 lb. (1610 kg)	3,801 lb. (1724 kg)	4,400 lb. (1996 kg)	3,200 lb. (1451 kg)	3,801 lb. (1724 kg)	4,400 lb. (1996 kg)
Bucket Width	9 ft. 7 in. (2.91 m)	9 ft. 7 in. (2.91 m)	9 ft. 7 in. (2.91 m)	9 ft. 7 in. (2.91 m)	9 ft. 7 in. (2.91 m)	9 ft. 7 in. (2.91 m)
Reach, 45-deg. Dump, 7-ft. (2.13 m) Clearance	4 ft. 9 in. (1.45 m)	4 ft. 11 in. (1.51 m)	5 ft. 2 in. (1.57 m)	5 ft. 11 in. (1.81 m)	6 ft. 2 in. (1.88 m)	6 ft. 5 in. (1.96 m)
Loader Clearance Circle, Bucket Carry Position	40 ft. 2 in. (12.24 m)	40 ft. 6 in. (12.34 m)	40 ft. 0 in. (12.19 m)	40 ft. 4 in. (12.29 m)	41 ft. 8 in. (12.70 m)	42 ft. 2 in. (12.85 m)
Lift Capacity						
At Ground Line	29,335 lb. (13 306 kg)	28,220 lb. (12 800 kg)	28,041 lb. (12 719 kg)	25,629 lb. (11 625 kg)	24,749 lb. (11 226 kg)	24,442 lb. (11 087 kg)
At Full Height	16,615 lb. (7536 kg)	16,240 lb. (7366 kg)	15,717 lb. (7129 kg)	15,093 lb. (6846 kg)	14,729 lb. (6681 kg)	14,205 lb. (6443 kg)

# Specifications

## Engine 644J WH

Manufacturer and Model	John Deere PowerTech Plus™ 6068H
Non-Road Emission Standards	complies with EPA Tier 3 regulations
Cylinders	6
Displacement	415 cu. in. (6.8 L)
Net Peak Power (ISO9249)	232 hp (173 kW) @ 1,700 rpm
Net Torque Rise	55%
Net Peak Torque (ISO9249)	749 lb.-ft. (1016 Nm) @ 1,400 rpm
Lubrication	full-flow spin-on filter and integral cooler
Engine Air Pre-Cleaner	centrifugal
Air Cleaner	dual element dry type, restriction indicator in cab

## Cooling

Fan Drive	hydraulically driven, proportionally controlled (cool-on-demand) cooling fan, aft of coolers, swing-out fan
Fan Type	blower with reverser valve; selectable timer can be actuated by switch in cab
Engine Coolant Rating	-34 deg. F (-37 deg. C)
Engine Radiator	8 fins per in. (water to air)
Hydraulic Cooler	6.3 fins per in. (oil to air)
Charge Air Cooler	6.3 fins per in. (air to air)
Transmission Oil Cooler	6.3 fins per in. (oil to air)
Axle Coolers (optional)	6 fins per in. (oil to air)

## Powertrain

Countershaft-type PowerShift™ transmission; single-stage, single-phase torque converter; steering-column- or joystick-mounted F-N-R and gear-select lever; kick-down button on hydraulic lever		
Number of Gears Forward	3	
Number of Gears Reverse	3	
Shift Control	electronically modulated, adaptive, load and speed dependent	
Shift Modes	quick-shift button with 2 selectable modes: auto/manual, auto to 1st or 2nd, kick down or kick up/down, 3 clutch cutoff settings adjustable on switch pad	
Travel Speeds With 23.5 R 25 Radial Tires	<i>Forward Maximum Speed</i>	<i>Reverse Maximum Speed</i>
Gear 1	4.6 mph (7.4 km/h)	4.9 mph (7.9 km/h)
Gear 2	7.6 mph (12.2 km/h)	8.0 mph (12.9 km/h)
Gear 3	14.7 mph (23.7 km/h)	15.5 mph (24.9 km/h)
Transmission Clutch Disconnect	3 selectable settings on the switch pad	

## Axles

Rear Axle Oscillation, Stop to Stop . . . . . 18 deg.

**Differentials** . . . . . hydraulic multi-disk 100% locking front with conventional rear – standard; hydraulic multi-disk 100% locking front and rear – optional

## Steering

Power, Fully Hydraulic (SAE J1511) . . . . . single-lever control with adjustable wristrest

Articulation Angle . . . . . 80-deg. arc (40 deg. each direction)

**Final Drive** . . . . . heavy-duty inboard-mounted planetary

Guard . . . . . bolt-on, axle seal guard

**Brakes** (conform to SAE J1473, ISO3450)

Service Brakes . . . . . hydraulically actuated, inboard sun-shaft mounted, oil cooled, self-adjusting, single-disc

Parking Brake . . . . . automatic spring applied, hydraulically released, driveline mounted, oil cooled, multi-disc

## Hydraulics

Main Pump (loader and steering) . . . . . variable-displacement, axial-piston pump; closed-center, pressure-compensating system

Rated rpm . . . . . 2,200

Maximum Rated Flow @ 1,000 psi (6895 kPa) . . . . . 68 gpm (257 L/m)

System Relief Pressure, Loader and Steering . . . . . 3,600 psi (24 821 kPa)

**Hydraulic Cycle Time** . . . . . *Standard Z-Bar Linkage* . . . . . *High-Lift Z-Bar Linkage*

  Raise . . . . . 6.2 sec. . . . . 6.2 sec.

  Dump . . . . . 1.4 sec. . . . . 1.4 sec.

  Lower (float down) . . . . . 3.0 sec. . . . . 3.0 sec.

  Total . . . . . 10.6 sec. . . . . 10.6 sec.

## Turning Radius

Measured to Centerline of Outside Tire . . . . . 18 ft. 0 in. (5486 mm)

**Controls** . . . . . 2-function valve; single- or dual-lever controls; control lever lockout feature; optional third- and fourth-function valve with auxiliary lever



**Electrical**

**644J WH**

Electrical distribution center with solid-state switches and circuit-board technology  
 Voltage . . . . . 24 volts  
 Number of Batteries (12 volt) . . . . . 2  
 Battery Capacity . . . . . 1,400 CCA  
 Reserve Capacity . . . . . 200 min.  
 Alternator Rating . . . . . 80 amp  
 Lights (SAE 99) . . . . . driving lights with guard, turn signals, and flashers; stop and taillight  
 Work Lights . . . . . front (2), rear (2)

**Tires/Wheels**

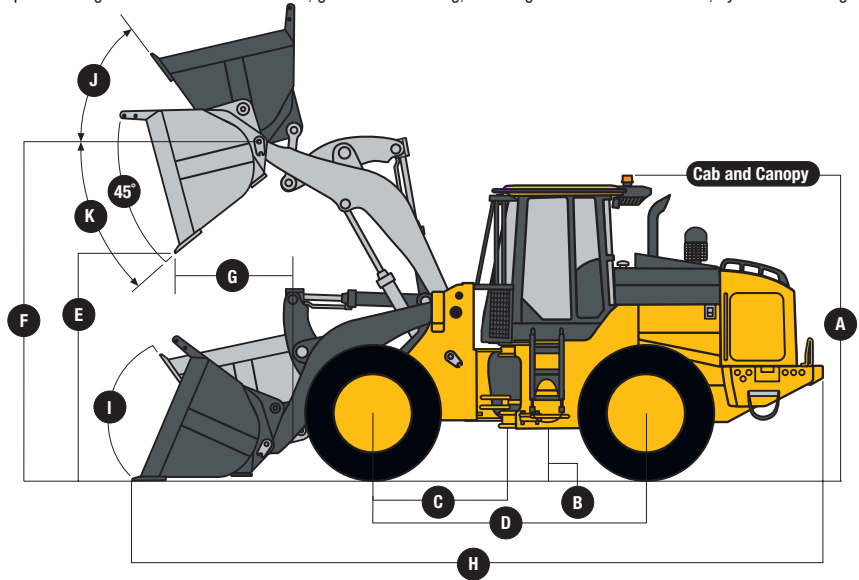
	Tread Width	Width Over Tires
With 23.5 R 25, 1-Star L3 Radial Tires With 3-Piece Rims . . . . .	7 ft. 1 in. (2169.2 mm)	9 ft. 5 in. (2875.3 mm)

**Serviceability**

Bottom protection, integral in mainframe; engine side shields hinged, fan door opens 90 deg. for full access to all coolers; ground-level fueling; remote grease bank for front axle; hydraulic "O"-ring face seal connectors

Fluid-Change Interval	Hours
Engine Oil . . . . .	500
Park Brake Oil . . . . .	1,000
Transmission Oil . . . . .	2,000
Hydraulic Oil . . . . .	3,000
Axle Oil . . . . .	2,000

Refill Capacities	
Axle Oil (front and rear) . . . . .	23 qt. (22 L)
Wet-Disc Parking Brake Oil . . . . .	20 oz. (0.6 L)
Cooling System . . . . .	31 qt. (29.5 L)
Engine Oil With Vertical Spin-On Filter . . . . .	26 qt. (24.5 L)
Fuel Tank . . . . .	93 gal. (352 L)
Hydraulic Reservoir and Filters . . . . .	31 gal. (117.3 L)
PowerShift Transmission Fluid With Vertical Spin-On Filter . . . . .	28 qt. (26.5 L)



**Operating Weights**

All configurations include weight with full fuel tank and 175-lb. (79 kg) operator

	Standard Z-Bar Linkage			High-Lift Z-Bar Linkage		
	5.0 cu. yd. (3.8 m³)	6.0 cu. yd. (4.5 m³)	7.0 cu. yd. (5.35 m³)	5.0 cu. yd. (3.8 m³)	6.0 cu. yd. (4.5 m³)	7.0 cu. yd. (5.35 m³)
Standard-Lip Bucket . . . . .	48,050 lb. (21 778 kg)	48,651 lb. (22 050 kg)	49,051 lb. (22 231 kg)	48,530 lb. (21 995 kg)	49,130 lb. (22 267 kg)	49,530 lb. (22 449 kg)

**Machine Dimensions**

	Standard Z-Bar Linkage With Pin-On Bucket			High-Lift Z-Bar Linkage With Pin-On Bucket		
	5.0-cu.-yd. (3.8 m³) Bucket	6.0-cu.-yd. (4.6 m³) Bucket	7.0-cu.-yd. (5.4 m³) Bucket	5.0-cu.-yd. (3.8 m³) Bucket	6.0-cu.-yd. (4.6 m³) Bucket	7.0-cu.-yd. (5.4 m³) Bucket
<b>A</b> Height to Top of Cab and Canopy . . . . .	11 ft. 2 in. (3.40 m)	11 ft. 2 in. (3.40 m)	11 ft. 2 in. (3.40 m)	11 ft. 2 in. (3.40 m)	11 ft. 2 in. (3.40 m)	11 ft. 2 in. (3.40 m)
<b>B</b> Ground Clearance . . . . .	18.1 in. (460 mm)	18.1 in. (460 mm)	18.1 in. (460 mm)	18.1 in. (460 mm)	18.1 in. (460 mm)	18.1 in. (460 mm)
<b>C</b> Length from Centerline to Front Axle . . . . .	5 ft. 3 in. (1.60 m)	5 ft. 3 in. (1.60 m)	5 ft. 3 in. (1.60 m)	5 ft. 3 in. (1.60 m)	5 ft. 3 in. (1.60 m)	5 ft. 3 in. (1.60 m)
<b>D</b> Wheelbase . . . . .	10 ft. 6 in. (3.20 m)	10 ft. 6 in. (3.20 m)	10 ft. 6 in. (3.20 m)	10 ft. 6 in. (3.20 m)	10 ft. 6 in. (3.20 m)	10 ft. 6 in. (3.20 m)
<b>E</b> Dump Clearance . . . . .	9 ft. 8 in. (2.95 m)	9 ft. 2 in. (2.79 m)	8 ft. 10 in. (2.69 m)	10 ft. 6 in. (3.20 m)	10 ft. 10 in. (3.30 m)	10 ft. 6 in. (3.21 m)
<b>F</b> Height to Hinge Pin, Fully Raised . . . . .	13 ft. 10 in. (4.21 m)	13 ft. 10 in. (4.22 m)	13 ft. 10 in. (4.22 m)	15 ft. 2 in. (4.62 m)	15 ft. 2 in. (4.62 m)	15 ft. 2 in. (4.62 m)
<b>G</b> Dump Reach . . . . .	3 ft. 0.5 in. (0.928 m)	3 ft. 1 in. (0.93 m)	3 ft. 11 in. (1.19 m)	3 ft. 9 in. (1.15 m)	4 ft. 4 in. (1.33 m)	4 ft. 9 in. (1.44 m)
<b>H</b> Overall Length . . . . .	25 ft. 11 in. (7.90 m)	25 ft. 11 in. (7.90 m)	27 ft. 2 in. (8.28 m)	27 ft. 6 in. (8.38 m)	26 ft. 9 in. (8.15 m)	28 ft. 9 in. (8.76 m)
<b>I</b> Maximum Rollback at Ground Level . . . . .	37 deg.	37 deg.	37 deg.	37 deg.	37 deg.	37 deg.
<b>J</b> Maximum Rollback at Full Height . . . . .	57 deg.	57 deg.	57 deg.	47 deg.	47 deg.	47 deg.
<b>K</b> Maximum Dump Angle at Full Height . . . . .	45 deg.	45 deg.	45 deg.	40 deg.	40 deg.	40 deg.
Capacity, Heaped SAE (with bolt-on cutting edge) . . . . .	5.0 cu. yd. (3.8 m³)	6.0 cu. yd. (4.6 m³)	7.0 cu. yd. (5.4 m³)	5.0 cu. yd. (3.8 m³)	6.0 cu. yd. (4.6 m³)	7.0 cu. yd. (5.4 m³)
Capacity, Struck SAE . . . . .	4.3 cu. yd. (3.3 m³)	5.5 cu. yd. (4.2 m³)	6.2 cu. yd. (4.8 m³)	4.3 cu. yd. (3.3 m³)	5.5 cu. yd. (4.2 m³)	6.2 cu. yd. (4.8 m³)
Breakout Force (SAE J732C) . . . . .	34,471 lb. (15 636 kg)	28,848 lb. (13 085 kg)	26,043 lb. (11 813 kg)	30,674 lb. (13 913 kg)	25,604 lb. (11 614 kg)	23,075 lb. (10 467 kg)
Tipping Load, Straight . . . . .	37,124 lb. (16 839 kg)	35,615 lb. (16 155 kg)	34,251 lb. (15 536 kg)	30,366 lb. (13 763 kg)	29,040 lb. (13 173 kg)	27,904 lb. (12 657 kg)
Tipping Load, 40-deg. Full Turn, SAE . . . . .	32,514 lb. (14 748 kg)	31,108 lb. (14 111 kg)	29,861 lb. (13 545 kg)	26,492 lb. (12 007 kg)	25,249 lb. (11 453 kg)	24,205 lb. (10 979 kg)
Bucket Weight . . . . .	3,800 lb. (1724 kg)	4,400 lb. (1996 kg)	4,800 lb. (2177 kg)	3,800 lb. (1724 kg)	4,400 lb. (1996 kg)	4,800 lb. (2177 kg)
Bucket Width . . . . .	9 ft. 6 in. (2.90 m)	9 ft. 6 in. (2.90 m)	9 ft. 6 in. (2.90 m)	9 ft. 6 in. (2.90 m)	9 ft. 6 in. (2.90 m)	9 ft. 6 in. (2.90 m)
Reach, 45-deg. Dump, 7-ft. (2.13 m) Clearance . . . . .	5 ft. 0 in. (1.53 m)	5 ft. 3 in. (1.61 m)	5 ft. 5 in. (1.65 m)	6 ft. 5 in. (1.96 m)	6 ft. 9 in. (2.05 m)	6 ft. 11 in. (2.10 m)
Loader Clearance Circle, Bucket Carry Position . . . . .	42 ft. 3 in. (12.88 m)	42 ft. 9 in. (13.03 m)	40 ft. 0 in. (12.19 m)	43 ft. 7 in. (13.28 m)	44 ft. 2 in. (13.46 m)	44 ft. 6 in. (13.56 m)
Lift Capacity						
At Ground Line . . . . .	35,496 lb. (16 101 kg)	34,094 lb. (15 465 kg)	28,592 lb. (12 969 kg)	30,802 lb. (13 972 kg)	29,677 lb. (13 461 kg)	28,592 lb. (12 969 kg)
At Full Height . . . . .	30,802 lb. (13 972 kg)	22,989 lb. (10 428 kg)	16,906 lb. (7668 kg)	17,779 lb. (8064 kg)	17,219 lb. (7810 kg)	16,906 lb. (7668 kg)

## 544J / 624J / 644J WASTE HANDLERS

**Key:** ● Standard equipment ▲ Optional equipment

\*See your John Deere dealer for further information.

544J	624J	644J	Engine
●	●	●	Pre-cleaner
●	●	●	Automatic derating when system temperatures exceeded
●	●	●	Monitor-selected high-altitude compensation
●	●	●	10-micron primary fuel filter/water separator
●	●	●	2-micron final fuel filter
●	●	●	Heavy-duty steel fuel tank guard
●	●	●	500-hour full-flow spin-on oil filter
●	●	●	Polyvee drive belt with automatic tensioner
●	●	●	Environmentally friendly engine oil drain
<b>Cooling</b>			
●	●	●	Reversing fan drive – auto control with manual override
●	●	●	Heavy-duty trash-resistant high-ambient cooling package
●	●	●	Two-side access to all coolers
●	●	●	Cooling system isolated from engine compartment
●	●	●	Proportionally controlled (cool-on-demand), hydraulically driven, swing-out fan
●	●	●	Integral engine oil cooler
●	●	●	Coolant recovery tank
●	●	●	Fan guard
<b>Powertrain</b>			
●	●	●	Electronically controlled, adaptive, load- and speed-dependent shift modulation
●	●	●	Auto-shift/manual-shift modes
●	●	●	Gear kickdown button in hydraulic-control lever
●	●	●	1,000-hour transmission filter
●	●	●	Integral transmission sight gauge/fill tube
●	●	●	Lube-for-life U-joints
●	●	●	Top axle housing fill and dipstick port
●	●	●	Front axle with hydraulic locking front and conventional rear differentials
▲	▲	▲	Front and rear axles with hydraulic locking differentials
▲	▲	▲	Remote-axle breathers
<b>Hydraulic System</b>			
●	●	●	In-cab adjustable automatic bucket positioner
●	●	●	In-cab adjustable automatic boom height kickout control
●	●	●	In-cab adjustable automatic boom return-to-carry control
●	●	●	Reservoir sight gauge
●	●	●	Spin-on hydraulic filters, vertical mounting
●	●	●	Hydraulic lever lockout
●	●	●	Two-function hydraulic valve with joystick
▲	▲	▲	Two-function hydraulic valve with two-lever fingertip controls and adjustable wristrest
▲	▲	▲	Three-function hydraulic valve with two-lever fingertip controls, adjustable wristrest, and auxiliary lever for third function
▲	▲	▲	Three-function hydraulic valve with joystick control and auxiliary lever for third function
▲	▲	▲	Four-function hydraulic valve, with dual single-lever controls
▲	▲	▲	Hydraulic conversion kits, two- to three- and three- to four-function valves

544J	624J	644J	Hydraulic System (continued)
▲	▲	▲	Hydraulic control system for quick-coupler locking pins
<b>Electrical</b>			
●	●	●	Solid-state electrical power distribution system
●	●	●	Batteries, high capacity (2), 12 volt with 950 CCA, 200-min. rated reserve each
●	●	●	Batteries, high capacity (2), 12 volt with 1,400 CCA, 440-min. rated reserve each
●	●	●	Lights (conform to SAE J99): Driving with guards / Turn signals and flashers / Stop and taillights
●	●	●	LED heavy-duty taillights and turn signals
●	●	●	Work lights, front (2) and rear (2)
●	●	●	Horn, with push button in center of steering wheel (conforms to SAE J994, J1446)
●	●	●	Reverse warning alarm (conforms to SAE J994, J1446)
●	●	●	Computerized multifunction monitor
●	●	●	Audible and visual warnings: Amber caution / Red stop / Analog gauges: Engine coolant temperature, transmission oil temperature, fuel level, hydraulic oil temperature, engine oil pressure / Digital instruments: Engine rpm, odometer, transmission gear indicator, speedometer, hour meter / Operator warning lights: Check engine, engine oil pressure, engine air filter restriction, battery voltage, transmission filter restriction, brake pressure, hydraulic oil filter, fasten seat belt, transmission fault, hydraulic oil temperature
●	●	●	Indicator lights: Park brake / Ride control / Turn signals and warning flashers / Coupler pin disconnect / Engine preheater / Secondary steering / Work lights
●	●	●	Radio-ready cab: Fused 24-volt radio electrical lead, and fused lead for optional Deere 5-amp and 10-amp voltage converters
●	●	●	Built-in diagnostics: Fault code retrieval
▲	▲	▲	AM/FM/WB stereo radio
▲	▲	▲	AM/FM/WB stereo radio with cassette
▲	▲	▲	AM/FM/WB stereo radio with CD
●	●	●	Strobe light wired to master electrical disconnect switch
<b>Operator's Station</b>			
●	●	●	Cab (conforms to SAE J1040C APR88): ROPS/FOPS / Heater/defroster / Multiplane isolation mounted for noise/vibration reduction / Front and rear windshield washers and intermittent wipers / Tinted safety glass
●	●	●	Air conditioning
●	●	●	Seat belt, 3 in. (76 mm), with retractor
●	●	●	Seat, deluxe cloth covered with deep foam, high back, air suspension, adjustable for weight-height, fore-aft position, backrest tilt, and armrest angle
●	●	●	Cup holder, personal cooler holder
▲	▲	▲	Sun visor for cab
●	●	●	Storage compartment for operator's manual and other items
●	●	●	Rubber floor mat

544J	624J	644J	Operator's Station (continued)
●	●	●	Steering wheel, textured with spinner knob
●	●	●	Tilt steering column
●	●	●	Rearview mirrors, outside (2) and inside (1) (conform to SAE J985)
●	●	●	Handholds and steps, ergonomically located and slip resistant (conform to SAE J185)
<b>Waste Handler Package</b>			
●	●	●	Waste handler guards: Articulation guards / Axle seal guards / Boom cylinder and hydraulic lines guard / Bucket cylinder hydraulic lines, zerk, and sensor guard / Driveshaft guard / Extreme-duty front loader frame cover with handles / Extreme-duty transmission side guards / Lower boom and bucket grease-fitting guards / Rear loader frame cover
●	●	●	Cab floor-mounted lockable master electrical disconnect switch
●	●	●	Extreme-duty cab entry steps
▲	▲	▲	Extreme-duty hydraulic bottom guards (fuel tank, loader frame, engine frame)
▲	▲	▲	Bottom guards, bolt-on, front frame and transmission
●	●	●	Full-frontal cab window guard (high-visibility version not designed to SAE J1084)
●	●	●	Rear-access platforms with step, handhold, and tie-downs
<b>Loader Linkage</b>			
●	●	●	Loader boom service locking bar (conforms to SAE J38)
▲	▲	▲	Z-bar loader linkage
▲	▲	▲	High-lift Z-bar loader linkage
<b>Buckets and Attachments</b>			
▲	▲	▲	Full line of Deere pin-on and hook-on buckets with selection of bolt-on cutting edges and teeth-segmented bolt-on cutting edges*
▲	▲	▲	Quick-coupler which accepts Deere and JRB attachments
▲	▲	▲	Hydraulic control system for quick-coupler locking pins, includes all controls in cab, lines, and valves
▲	▲	▲	Loadrite™ weighing system*
<b>Tires</b>			
▲	▲	▲	20.5 X 25
▲	▲	▲	23.5 X 25
▲	▲	▲	L-5 radial or bias ply
▲	▲	▲	Less wheels and tires
▲	▲	▲	Multi-piece rims
<b>Other</b>			
●	●	●	Articulation locking bar (conforms to SAE J276)
●	●	●	Vandal protection, includes lockable engine enclosure, rear grille, and fuel fill
●	●	●	Counterweight, built-in
●	●	●	Drawbar, with locking pin
▲	▲	▲	Lift hooks
▲	▲	▲	Fire extinguisher
▲	▲	▲	License-plate bracket
▲	▲	▲	Secondary steering
▲	▲	▲	JDLink™



JOHN DEERE

DKAJULDRWH Litho in U.S.A. (07-04)

Net engine power is with standard equipment including air cleaner, exhaust system, alternator, and cooling fan at test conditions per ISO9249. No derating is required up to 5,000-ft. (1525 m) altitude for the 544J and 624J, and up to 10,000-ft. (3050 m) altitude for the 644J.

Specifications and design subject to change without notice. Wherever applicable, specifications are in accordance with SAE standards. Except where otherwise noted, these specifications are based on units with all standard equipment, waste handler protection packages, ROPS cabs, ROPS cab, full fuel tanks, and 175-lb. (79 kg) operators; 544J and 624J units with 20.5 X 25 solid rubber tires; and 644J unit with 23.5 X 25 solid rubber tires.



Courtesy of Machine.Market