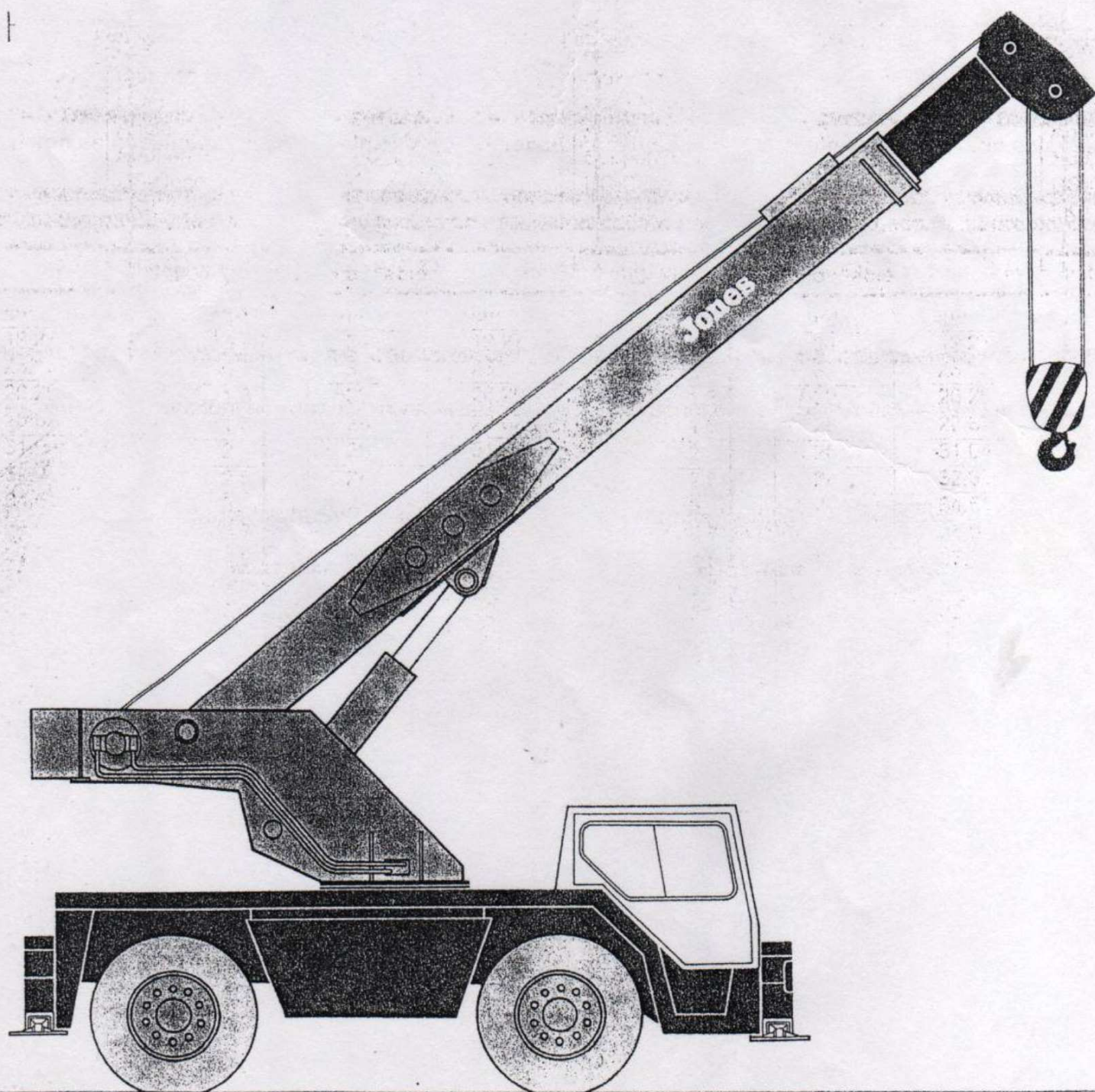
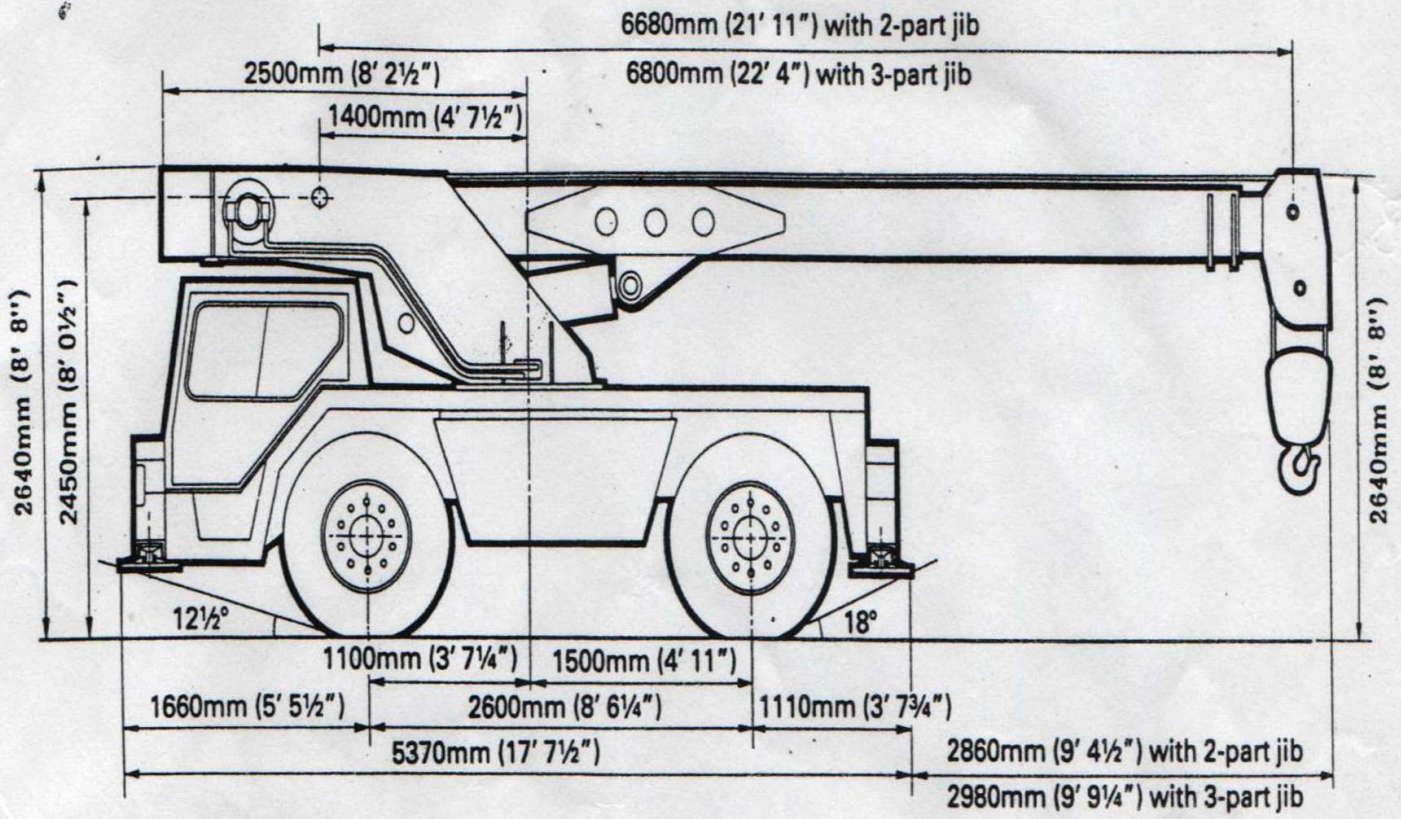


Jones IF12A

diesel hydraulic mobile crane
with telescopic jib

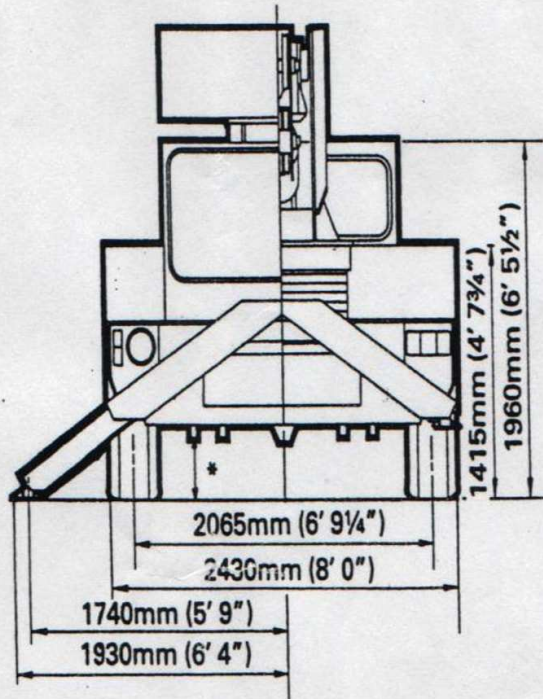
MAXIMUM LIFTING CAPACITY: 12140 kg.





Overall length in travelling order 8230mm (27' 0") with 2-part jib

8350mm (27' 4¾") with 3-part jib



*Minimum ground clearance 280mm (11")

AXLE LOADS IN TRAVEL ORDER (Tonnes)

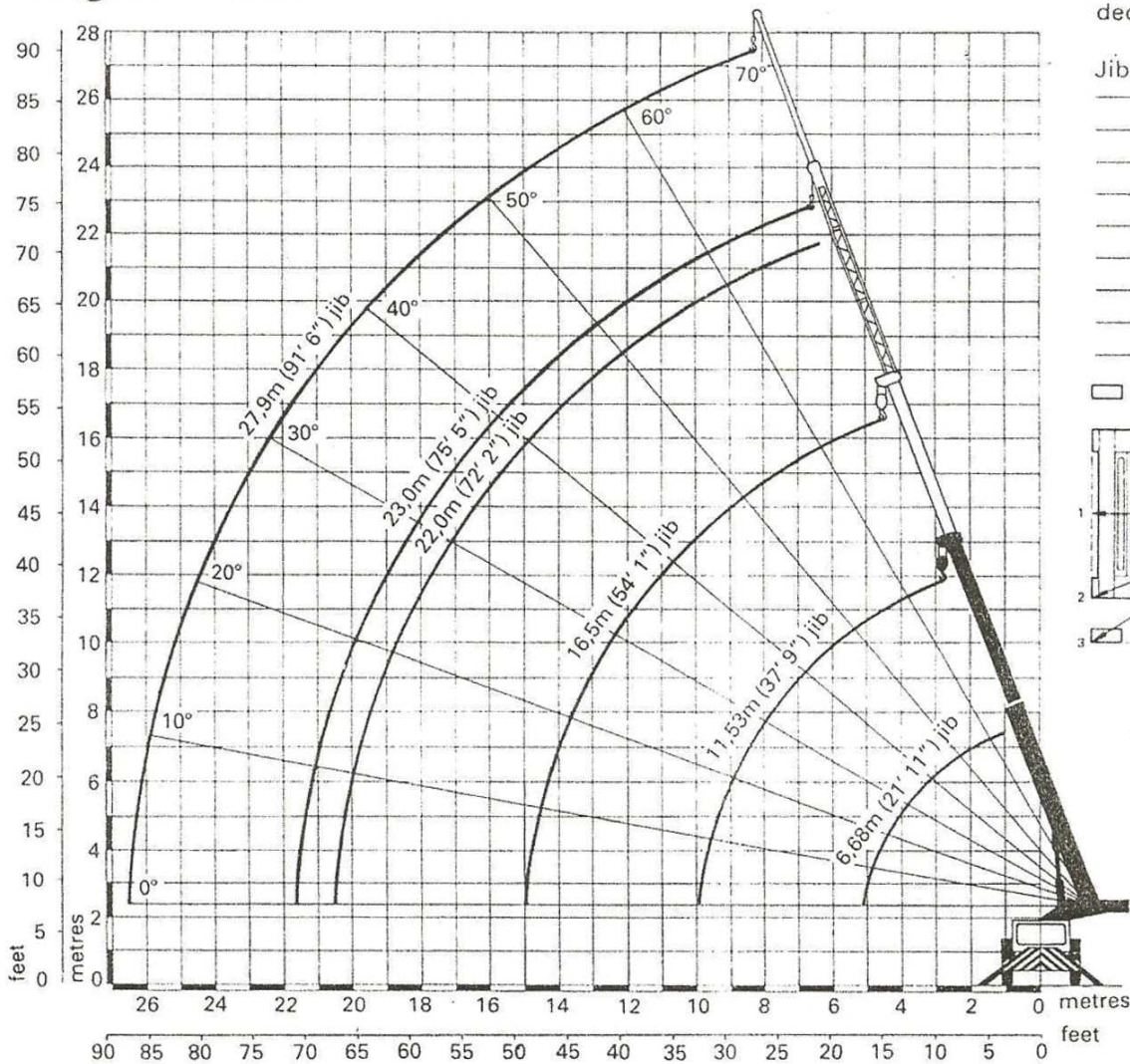
	Front	Rear	Total
Two-Section Jib	9,07	4,88	13,95
Three-Section Jib	8,85	5,85	14,70

Jones[®] IF12A lifting capacities

Three section jib Lifting capacities in kilograms — BS1757:81/DIN 15019.2

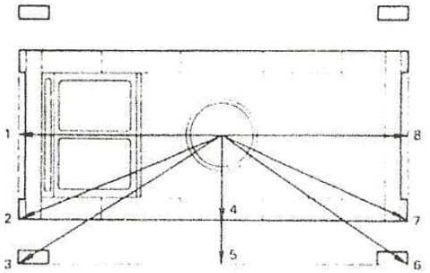
Radius			Jib closed			Jib extended			Jib extended			* Jib fully extended with lattice extension			
			6,8m (22' 4")			6,8m to 11,64m (22' 4" - 38' 3")			11,64 to 16,5m (38' 3" - 54' 2")			23,0m (75' 6")		+stinger 27,9m (91' 6")	
			blocked 360°	free-on-wheels 360° over front		blocked 360°	free-on-wheels 360° over front		blocked 360°	free-on-wheels 360° over front		∠°	blocked 360°	∠°	blocked 360°
m	ft	in	kg	kg	kg	kg	kg	kg	kg	kg		kg		kg	
2,50	8	2	12 150	7 500	8 000										
2,75	9	0	12 150	7 000	7 750	12 150	7 000	7 750							
3,00	9	10	12 150	6 500	7 400	10 800	6 500	7 400	6 200						
3,25	10	7	11 000	6 000	6 900	9 900	6 000	6 900	6 200						
3,50	11	6	10 000	5 450	6 300	9 000	5 450	6 300	6 200	5 450	6 300				
3,75	12	3	9 000	4 850	5 600	8 200	4 850	5 600	6 100	4 850	5 600				
4,00	13	1	8 250	4 400	5 100	7 550	4 400	5 100	6 000	4 400	5 100				
4,50	14	9	7 000	3 650	4 250	6 500	3 650	4 250	5 800	3 650	4 250				
5,00	16	5	6 000	3 100	3 600	5 600	3 100	3 600	5 600	3 100	3 600				
5,50	18	0				4 800	2 650	3 100	5 100	2 650	3 100				
6,00	19	8				4 250	2 300	2 700	4 600	2 300	2 700				
7,00	23	0				3 350	1 750	2 050	3 700	1 750	2 050	70	2 300 at 7,5MR		
8,00	26	3				2 750	1 300	1 600	3 000	1 300	1 600	69	2 140		
9,00	29	6				2 250	1 000	1 250	2 500	1 000	1 250	66	1 870		
10,00	32	10				1 900	750	950	2 000	750	950	63	1 650	69	1 000
11,00	36	1							1 700	600	750	60	1 470	66	870
12,00	39	4							1 450	450	600	57	1 330	64	750
13,00	42	8							1 200		450	54	1 200	61	670
14,00	45	11							1 000			51	1 060	59	600
15,00	49	3							850			48	950	57	560
16,00	52	6										44	840	55	520
17,00	55	9										40	750	51	500
18,00	59	1										36	660	49	480
19,00	62	4												46	460
20,00	65	7												44	440
21,00	68	11												41	420
22,00	72	2												37	400

Heights of lift



Outreach obtained by deducting from radius:—

Jib position	Deduction	
	m	ft in
1	2,76	9 1
2	3,02	9 11
3	3,37	11 1
4	1,22	4 0
5	1,93	6 4
6	3,25	10 9
7	2,88	9 5
8	2,61	8 7



*Singer
SUCK at 18m h.
LOCKED JIBS ONLY*

Optional equipment

- 16,5m (54ft 1in) three-part fully powered main jib.
- 6,5m (21ft 4in) lattice extension jib with single line hook and cam.
- 5,5m (18ft 0in) lattice extension jib with single line hook and cam.
- 11,4m (37ft 5in) lattice extension with stinger extension.
- Single line hook and cam.
- Alcohol evaporator for air brake system for use when working in temperatures below -9°C (15°F).
- Safe load indicator
- Man carrier
- Reversible passenger's seat and additional crane controls
- Suspension seat for driver

- Sun visor
- Hour meter
- Tachograph
- Warning beacons, carrier mounted
- Automatic reverse lights
- Jib light
- Towing hooks (front and rear)
- Slings points on chassis
- Cab guard
- Nose hook (Capacity 1 tonne)
- Tyre inflator
- Special painting in customer's livery (excluding cab)

JONES CRANES LIMITED
 P.O. Box 13, Letchworth,
 Herts SG6 1LU, England
 Telephone : 046-26 2360 Telex: 82112
 Telegrams & Cables : Jones Letchworth

