

# 115Z<sup>IV</sup>-2



 **Kawasaki**

# A PRODUCTION POWERHOUSE, THE **115Z<sup>IV</sup>-2**

## A COMPLETE SOLUTION

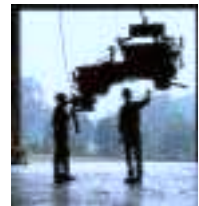
- Emissions-compliant 410 HP Cummins diesel
- 7.8 cu. yard bucket standard
- Dual Z-linkage arms—heaviest in its class
- Redesigned ROPS, FOPS cab optimizes productivity and visibility
- Ride Control provides stable load handling, standard
- K-Lever option provides one-hand steering and transmission control
- Air Conditioner and heater standard
- Automatic powershift transmission with four forward and three reverse speeds
- Outboard-mounted, four-wheel, dual circuit sealed wet disc brakes for reliability and long service life
- Heavy duty three-piece tire rims for easy servicing
- Easy access to drains, filters and fittings



*The 115Z<sup>IV</sup>-2 is built to handle the toughest challenge. Featuring unmatched power and performance, Kawasaki loaders have what it takes to turn out the work.*

## THE POWER TO PERFORM!

The 115Z<sup>IV</sup>-2 loader is a versatile, high productivity wheel loader for applications from quarries to bulk material handling. Featuring a Cummins QSK19 diesel engine producing 410 flywheel horsepower, an 8.25 cu. yard bucket, a certified ROPS/FOPS cab and a host of other features that provide high operating efficiency, ease of maintenance and safety, the 115Z<sup>IV</sup>-2 is always ready for the heavy duty jobs.



## OPERATOR PRODUCTIVITY AND SAFETY

The 115Z<sup>IV</sup>-2 features a completely redesigned ROPS/FOPS cab. The operator's compartment features a wrap-around tinted windshield which removes viewing obstructions and improves the operator's peripheral view. The cab also offers unmatched comfort and is designed to maximize efficiency and productivity. Accessible by ladders on both sides, the cab has front and rear wipers and includes many other features which contribute to improved safety, visibility and comfort. The 115Z<sup>IV</sup>-2 comes standard with a 25,000 BTU air conditioner and an AM/FM cassette radio.



*Kawasaki and their dealer organization offer comprehensive support and service programs designed to keep you on the job.*

## PUTTING THE 115Z<sub>2</sub>-2 TO WORK

Like all Kawasaki loaders, the 115Z<sub>2</sub>-2 has a 35-year heritage of strength and reliability. With dual pilot-assisted hydraulic controls, automatic powershift transmission and low-effort steering, the 115Z<sub>2</sub>-2 is designed to turn out the work.

Kawasaki's optional K-Lever Steering system increases operator productivity and dramatically reduces fatigue in wheel loader cycling applications. Located on the left armrest, K-Lever provides fast, proportional steering and transmission control with one hand convenience.

The 115Z<sub>2</sub>-2 comes equipped with an 7.8 cubic yard bucket with a bolt-on cutting edge. Simultaneous roll-back and lift operations can be performed with the bucket control lever for smooth, efficient bucket loading. Ride Control significantly reduces vibration for improved stability while reducing operator fatigue.

The outboard-mounted, four-wheel sealed wet disc brakes are designed for long life and easy access and overhaul. Standard spin-on filters, remote mounted grease fittings and oil drain simplify maintenance. The standard 35/36-33-24PR (L4) tires and optional L5 tires use heavy duty three-piece rims for easy servicing in the field.



## UNMATCHED SUPPORT

Kawasaki maintains a large inventory of new components to ensure outstanding parts availability and minimal downtime. In addition, a predictive oil analysis program helps eliminate unnecessary maintenance and helps find problems before they occur. Kawasaki also stocks an array of cost-effective rebuilt components.

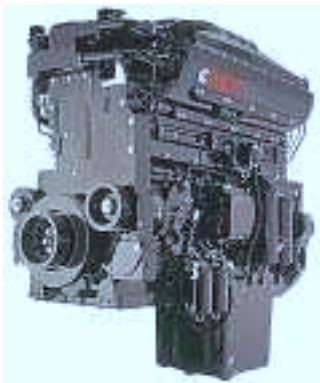
## BUILT TO STAY ON THE JOB

Kawasaki loaders are designed with the durability to provide years of service. Backed by a dealer network of heavy equipment experts and a dedicated support staff in the Kawasaki parts and service organization, your investment in a Kawasaki loader is an excellent choice that will pay dividends for years to come.

# POWER AND PERFORMANCE UNMATCHED PRODUCTIVITY

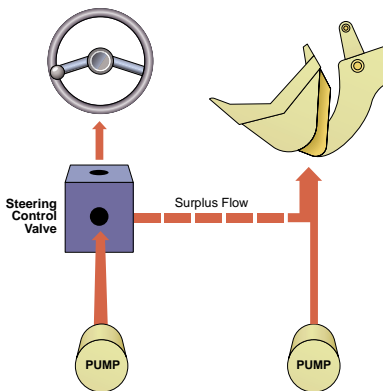
The Kawasaki *115Zs-2* means business. It incorporates the best in design and technology, giving your operators the tool they need to get the job done.

Because Kawasaki specializes in the design and manufacture of articulated wheel loaders, you get a machine with a 35-year heritage of successful innovations. The power and productivity that the *115Zs-2* brings to the job is a result of that experience.



## WORLD-CLASS ENGINES

- 410 HP emissions-compliant Cummins QSK19 diesel
- Already complies with tough new emissions standards for 2001
- Totally reengineered for longer service life
- High torque and fuel efficient
- Extensive distribution system
- 24 volt battery system for reserve power



## HIGH EFFICIENCY HYDRAULIC SYSTEM

- Dry, reliable
- Cast iron gear pump
- Light-touch steering is maintained, even at low engine speeds. When steering is not required, oil flow control routes full steering pump discharge to supplement the loading circuit.
- Easy access to two-spool control valve
- Large oil reservoir keeps oil cooler



## TRANSMISSION

- Automatic transmission selects optimum speed from second to fourth gear
- Heavy-duty design increases reliability
- Large standard SAE universal joints
- Single lever control
- Left brake pedal activates transmission declutch switch
- Downshift button speeds cycle times and reduces operator fatigue

# PROVIDE



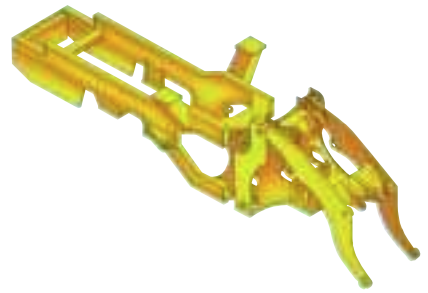
## AXLES/BRAKES

- Heavy-duty differential
- 35/36-33-24PR (L-4) tires standard
- 29.5-29-28PR (L-3, L-4, L-5 and radial) tires available
- 3-piece wheel rims standard
- Outboard-mounted, four-wheel, dual-circuit wet disc brakes
- Auto adjuster maintains brake feel
- High capacity
- Easy maintenance
- Long life



## LIFT ARMS/BUCKETS

- Z-linkage
- High breakout force
- Heaviest in its class
- Optional high lift arms available
- 7.8 cu. yd. rock bucket standard
- Easy loading
- Excellent load retention
- Full assortment of edges and teeth
- Complete array of attachments available
- Heel plates extend bucket life
- Bucket leveler and boom kick-out standard



## STRONG, RUGGED BOX FRAME

- Massive center pins and bearings
- High strength loader tower
- Heavy box frame rear chassis
- All pins of the loading system are fully sealed with grease to provide dependable service with minimum maintenance



# THE COMF

*Kawasaki engineers its cabs with operator productivity in mind. With attention to even the smallest details, this cab is designed to provide the operator with the ideal working environment.*



# PORT ZONE

*Kawasaki has taken a from-the-ground-up approach to create a cab designed with the operator in mind. The new cab focuses on providing the ultimate environment for productivity, comfort and safety. The high visibility, quiet, temperature controlled cab offers the operator ideal surroundings for putting the Kawasaki loader through its paces.*

## **New Features**

- Adjustable tilt steering with interlocking instrument panel
- Adjustable wrist rest
- AM/FM cassette radio, standard
- Viscous isolation-mounted to reduce vibration
- Wrap-around tinted windshield for excellent visibility
- Reduced sound levels
- Personal storage space and coat hook
- Intermittent front wiper
- 25,000 BTU air conditioner standard
- Cold start feature
- Seven-way adjustable seat with headrest and adjustable arms, standard



*Easy-to-read gauges and adjustable tilt-steer with attached instrument panel provide accurate information at a glance.*

## **Redesigned Features**

- Single twist grip transmission lever redesigned for easy gripping and smoother shifting
- All systems monitored with lights and alarms
- Dual, pilot-assisted hydraulic controls—fingertip control
- One rearview and two side mirrors
- Rear lights added to ROPS

## **Standard Features**

- Certified ROPS/FOPS
- Rear cab light
- Doors latch back
- Side windows slide down
- 40,000 BTU heater standard
- Pressurized air control
- Left brake pedal activates transmission declutch switch
- Front and rear wipers and washers



*Wrap-around windshield and low dash offer excellent visibility for maximum productivity and safety.*

## **Optional Features**

- Air ride seat
- K-Lever steering and transmission control, optional



*The bucket seat with adjustable armrests and headrest is fully adjustable, providing comfort, visibility and accessibility to levers, pedals and displays.*

# EASY ACCESS SIMPLIFIES SERVICING

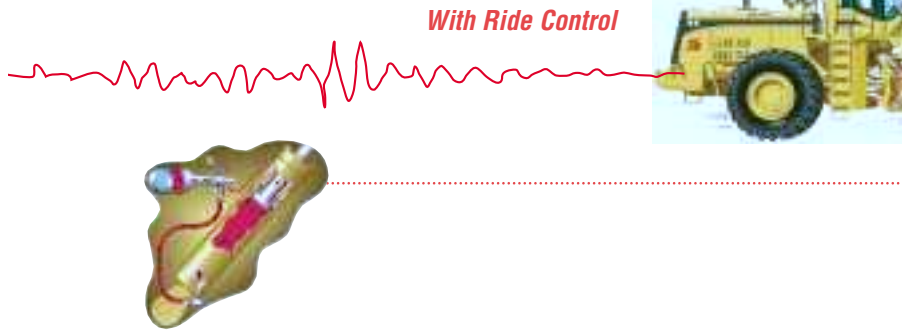
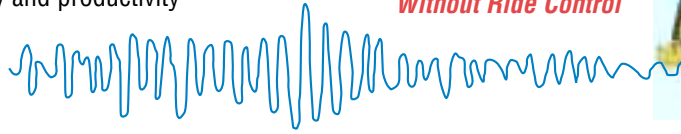
- Hinged grille makes radiator cleaning easy
- Engine side covers open wide for optimum access
- Filters positioned within easy reach
- Easy access to drains, filters and fittings
- Grease fittings are grouped for easy lubrication
- Readily available Fleetguard and Donaldson filters
- Starters and alternators available through Cummins national distribution network
- 3-piece wheel rims standard for easy field service
- Ladders on both sides of the machine
- Pressurized air control reduces dust in cab and control boxes





## RIDE CONTROL, STANDARD

- Stable load handling
- Reduces operator fatigue
- Cuts vibration and equipment wear
- Improves safety and productivity
- Less spillage
- Faster travel speed



*Illustration representative of similar models.*

## OPTIONS

### K-LEVER STICK STEERING

- Increases productivity and reduces fatigue
- Electric-over-hydraulic system, no hydraulic hoses in the armrest
- Forward, neutral, reverse and downshift buttons for one-hand steering/transmission control

- Positive, well modulated steering
- Fully adjustable for maximum operator comfort
- Field upgrades for any *1152<sub>4</sub>-E* machine



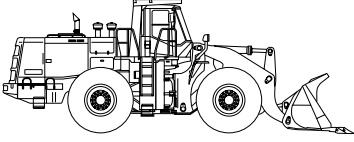
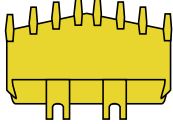
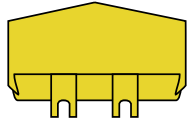
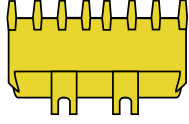
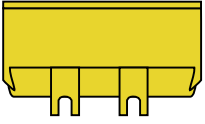
### SIDE-BY-SIDE RADIATORS

- Designed for easy cleaning and longer intervals between cleanings

### EMERGENCY STEERING

- Allows the machine to be steered in the event of an unexpected engine shut-off

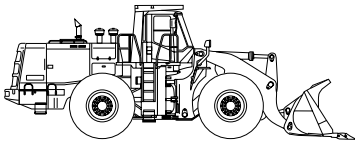
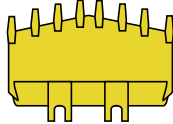
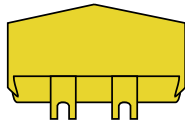
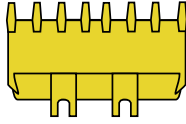
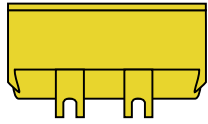
# 115Z<sup>IV</sup>-2 BUCKET DATA

			Standard Boom			
			Rock-V-Edge		Rock-Straight	General Purpose
			With Teeth	Without Teeth	With Teeth	With Bolt-on Cutting Edge
						
Capacity	Heaped	yd <sup>3</sup> (m <sup>3</sup> )	7.8 (6.0)	7.8 (6.0)	7.8 (6.0)	8.25 (6.3)
	Struck	yd <sup>3</sup> (m <sup>3</sup> )	6.9 (5.3)	6.9 (5.3)	6.7 (5.1)	7.0 (5.3)
Maximum dumping clearance		ft-in (mm)	10'10 <sup>11</sup> / <sub>16</sub> " (3320)	11'9 <sup>3</sup> / <sub>4</sub> " (3600)	11'5" (3480)	11'10" (3605)
Dumping reach (to front of bucket edge or tooth)		ft-in (mm)	6'5 <sup>9</sup> / <sub>16</sub> " (1970)	5'11" (1800)	5'11 <sup>1</sup> / <sub>4</sub> " (1810)	5'8 <sup>7</sup> / <sub>8</sub> " (1750)
Bucket hinge pin height		ft-in (mm)	16'6 <sup>1</sup> / <sub>2</sub> " (5040)	16'6 <sup>1</sup> / <sub>2</sub> " (5040)	16'6 <sup>1</sup> / <sub>2</sub> " (5040)	16'6 <sup>1</sup> / <sub>2</sub> " (5040)
Digging depth		ft-in (mm)	7 <sup>1</sup> / <sub>16</sub> " (180)	3 <sup>9</sup> / <sub>16</sub> " (90)	7 <sup>1</sup> / <sub>16</sub> " (180)	5 <sup>1</sup> / <sub>8</sub> " (130)
Breakout force		lb (kg)	84,900 (38,500)	84,900 (38,500)	101,000 (45,800)	86,900 (39,400)
Bucket tilt-back angle	at ground level		43°	43°	43°	43°
	at carry position		50°	50°	50°	50°
Overall	Length	ft-in (mm)	36'10 <sup>1</sup> / <sub>8</sub> " (11230)	35'5" (10795)	36'1 <sup>1</sup> / <sub>16</sub> " (11000)	35'6 <sup>3</sup> / <sub>8</sub> " (10830)
	Height	ft-in (mm)	13'8 <sup>1</sup> / <sub>4</sub> " (4170)	13'8 <sup>1</sup> / <sub>4</sub> " (4170)	13'8 <sup>1</sup> / <sub>4</sub> " (4170)	13'8 <sup>1</sup> / <sub>4</sub> " (4170)
	Width (outside tire)	ft-in (mm)	11'8 <sup>9</sup> / <sub>16</sub> " (3570)	11'8 <sup>9</sup> / <sub>16</sub> " (3570)	11'8 <sup>9</sup> / <sub>16</sub> " (3570)	11'8 <sup>9</sup> / <sub>16</sub> " (3570)
	Width (outside bucket)	ft-in (mm)	12'4 <sup>3</sup> / <sub>8</sub> " (3770)	12'4 <sup>3</sup> / <sub>8</sub> " (3770)	12'4 <sup>3</sup> / <sub>8</sub> " (3770)	12'4 <sup>3</sup> / <sub>8</sub> " (3770)
Wheel base		ft-in (mm)	13'3 <sup>7</sup> / <sub>16</sub> " (4050)	13'3 <sup>7</sup> / <sub>16</sub> " (4050)	13'3 <sup>7</sup> / <sub>16</sub> " (4050)	13'3 <sup>7</sup> / <sub>16</sub> " (4050)
Minimum turning radius	at outside bucket	ft-in (mm)	27'2" (8280)	26'9 <sup>1</sup> / <sub>4</sub> " (8160)	27'2" (8280)	27' <sup>3</sup> / <sub>8</sub> " (8240)
	at center of outside tire	ft-in (mm)	22'7 <sup>1</sup> / <sub>4</sub> " (6890)	22'7 <sup>1</sup> / <sub>4</sub> " (6890)	22'7 <sup>1</sup> / <sub>4</sub> " (6890)	22'7 <sup>1</sup> / <sub>4</sub> " (6890)
Minimum ground clearance		ft-in (mm)	1'9 <sup>5</sup> / <sub>8</sub> " (550)	1'9 <sup>5</sup> / <sub>8</sub> " (550)	1'9 <sup>5</sup> / <sub>8</sub> " (550)	1'9 <sup>5</sup> / <sub>8</sub> " (550)
Full articulation angle		degree	40°	40°	40°	40°
Operating weight (with ROPS Canopy and Cabin)		lb (kg)	97,090 (44,040)	96,010 (43,550)	96,650 (43,840)	96,585 (43,810)
Static Tipping Load (with ROPS Canopy and Cabin)	Straight	lb (kg)	62,675 (28,430)	64,065 (29,060)	63,270 (28,700)	62,830 (28,500)
	Full turn	lb (kg)	53,725 (24,370)	54,915 (24,910)	54,230 (24,400)	53,790 (24,400)

The weight and load figure includes optional counterweight, Enclosed ROPS Cab. 36/65-33-24PR tires. Full fuel tank and operator.

Materials and specifications are subject to change without notice and without obligation on the part of the manufacturer. The specifications supplied, while believed to be completely reliable, are not to be taken as warranty for which we assume legal responsibility.

# 115Z<sup>IV</sup>-2 BUCKET DATA

			High Lift Boom			
			Rock-V-Edge		Rock-Straight	General Purpose
			With Teeth	Without Teeth	With Teeth	With Bolt-on Cutting Edge
						
Capacity	Heaped	yd <sup>3</sup> (m <sup>3</sup> )	6.5 (5.0)	6.5 (5.0)	6.5 (5.0)	7.5 (5.6)
	Struck	yd <sup>3</sup> (m <sup>3</sup> )	5.6 (4.3)	5.6 (4.3)	5.5 (4.3)	6.5 (5.0)
Maximum dumping clearance		ft-in (mm)	12'7" (3835)	13'6" (4115)	13'1 1/2" (4000)	13'7 3/8" (4150)
Dumping reach (to front of bucket edge or tooth)		ft-in (mm)	6'6 9/16" (1995)	5'11 7/8" (1825)	6'1/16" (1830)	5'8 7/8" (1750)
Bucket hinge pin height		ft-in (mm)	18'1/8" (5490)	18'1/8" (5490)	18'1/8" (5490)	18'1/8" (5490)
Digging depth		ft-in (mm)	7'1/16" (180)	3'9/16" (90)	7'1/16" (180)	5'1/8" (130)
Breakout force		lb (kg)	90,400 (41,000)	90,400 (41,000)	108,900 (49,400)	94,800 (43,000)
Bucket tilt-back angle	at ground level		43°	43°	43°	43°
	at carry position		50°	50°	50°	50°
Overall	Length	ft-in (mm)	38'11 1/16" (11600)	36'8 15/16" (11,200)	37'3 9/8" (11,370)	36'6 9/16" (11,130)
	Height	ft-in (mm)	13'8 1/4" (4170)	13'8 1/4" (4170)	13'8 1/4" (4170)	13'8 1/4" (4170)
	Width (outside tire)	ft-in (mm)	11'8 9/16" (3570)	11'8 9/16" (3570)	11'8 9/16" (3570)	11'8 9/16" (3570)
	Width (outside bucket)	ft-in (mm)	12'4 3/8" (3770)	12'4 3/8" (3770)	12'4 3/8" (3770)	12'4 3/8" (3770)
Wheel base		ft-in (mm)	13'3 7/16" (4050)	13'3 7/16" (4050)	13'3 7/16" (4050)	13'3 7/16" (4050)
Minimum turning radius	at outside bucket	ft-in (mm)	22'7 1/4" (6890)	22'7 1/4" (6890)	22'7 1/4" (6890)	22'7 1/4" (6890)
	at center of outside tire	ft-in (mm)	27'9 1/8" (8460)	27'3 15/16" (8330)	27'9 1/8" (8460)	27'6 3/4" (8400)
Minimum ground clearance		ft-in (mm)	1'9 5/8" (550)	1'9 5/8" (550)	1'9 5/8" (550)	1'9 5/8" (550)
Full articulation angle		degree	40°	40°	40°	40°
Operating weight (with ROPS Canopy and Cabin)		lb (kg)	98,500 (44,680)	97,420 (44,190)	98,080 (44,490)	97,420 (44,190)
Static Tipping Load (with ROPS Canopy and Cabin)	Straight	lb (kg)	58,270 (26,430)	59,770 (27,110)	58,640 (26,600)	58,420 (26,500)
	Full turn	lb (kg)	49,980 (22,670)	51,060 (23,160)	50,040 (22,700)	48,820 (22,600)

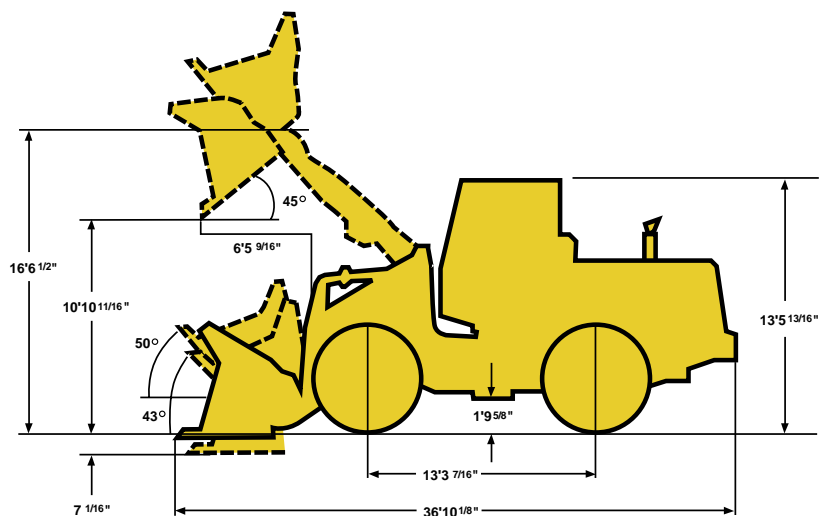
\*The weight and load figure includes optional counterweight, Enclosed ROPS Cab. 36/65-33-24PR tires. Measured in accordance with SAEJ732C & J742

# 115Z<sup>AV</sup>-2 OPERATING SPECIFICATIONS

## WEIGHTS AND DIMENSIONS (SUPPLEMENTAL DATA)

		Operating Weight	Tipping Load			Overall Width (Outside Tire)	Tread	Vertical Dimensions	Overall Length
			Straight	Full Turn					
ROPS Canopy (Instead of ROPS Cab)	lb (kg)	-770 (-350)	-570 (-260)	-570 (-260)	in (mm)				
Remove ROPS Canopy and Cab (for transport only)	lb (kg)	-2645 (-1200)	-2335 (-1060)	-2250 (-1020)	in (mm)		1'4 <sup>1</sup> / <sub>8</sub> " (-410)		
Remove Counter Weight	lb (kg)	-1340 (-610)	-3240 (-1470)	-2690 (-1220)	in (mm)				
Tires: 35/36-33-24PR (L-5)	lb (kg)	+1500 (+680)	+10600 (+480)	+930 (+420)	in (mm)		+1" (+25)	+1" (+25)	
29.5-29-28PR (L-3)	lb (kg)	-4070 (-1850)	-2890 (-1310)	-2530 (-1150)	in (mm)	-4 <sup>3</sup> / <sub>4</sub> " (-120)	-3 <sup>1</sup> / <sub>8</sub> " (-80)	+3 <sup>1</sup> / <sub>8</sub> " (+80)	
29.5-29-28PR (L-4)	lb (kg)	-2200 (-1000)	-1540 (-700)	-1370 (-620)	in (mm)	-4 <sup>3</sup> / <sub>4</sub> " (-120)	-1 <sup>1</sup> / <sub>2</sub> " (-40)	+1 <sup>1</sup> / <sub>2</sub> " (+40)	
29.5-29-28PR (L-5)	lb (kg)	-1210 (-550)	-830 (-380)	-750 (-340)	in (mm)	-4 <sup>3</sup> / <sub>4</sub> " (-120)	-3 <sup>4</sup> / <sub>8</sub> " (-20)	+3 <sup>4</sup> / <sub>8</sub> " (+20)	
35/65-33-24 (L-4) (75% CaCl <sub>2</sub> )	lb (kg)	+5950 (+2700)	+8420 (+3820)	+7430 (+3370)	in (mm)				
35/65-33-24 (L-5) (75% CaCl <sub>2</sub> )	lb (kg)	+7450 (+3380)	+10540 (+4780)	+9300 (+4220)	in (mm)		+1" (+25)	+1" (+25)	
29.5-29-28PR (L-3) (75% CaCl <sub>2</sub> )	lb (kg)	+500 (+250)	+770 (+350)	+680 (+310)	in (mm)	-4 <sup>3</sup> / <sub>4</sub> " (-120)	-3 <sup>1</sup> / <sub>8</sub> " (-80)	+3 <sup>1</sup> / <sub>8</sub> " (+80)	
29.5-29-28PR (L-4) (75% CaCl <sub>2</sub> )	lb (kg)	+2430 (+1100)	+3420 (+1550)	+3020 (+1370)	in (mm)	-4 <sup>3</sup> / <sub>4</sub> " (-120)	-1" (-40)	+1" (+40)	
29.5-28PR (75% CaCl <sub>2</sub> )	lb (kg)	+3420 (+1550)	+48300 (+2190)	+4250 (+1930)	in (mm)	-4 <sup>3</sup> / <sub>4</sub> " (-120)	-3 <sup>4</sup> / <sub>8</sub> " (-20)	+3 <sup>4</sup> / <sub>8</sub> " (+20)	
Air conditioner	lb (kg)	+220 (+100)	+310 (+140)	+260 (+120)	in (mm)				
Belly Guard (Rear Frame)	lb (kg)	+310 (+140)	+420 (+190)	+375 (+170)	in (mm)				

Tread ..... 8'8<sup>5</sup>/<sub>16</sub>" (2050mm)  
 Width (outside tire) ..... 11'8<sup>9</sup>/<sub>16</sub>" (3570mm)  
 Width (outside bucket) ..... 12'4<sup>3</sup>/<sub>8</sub>" (3770mm)  
 Equipped with Rock-V-Edge bucket with teeth,  
 35/65-33-24PR (L-4) Tire  
 and ROPS Canopy and Cab



# 115Z<sup>IV</sup>-2 OPERATING SPECIFICATIONS

ENGINE	
Make/Model/Fuel Type	Cummins QSK19
Type	4-cycle, watercooled, turbocharged and aftercooled, direct injection
Net flywheel horsepower	410HP/2000 RPM
Maximum torque	1335 ft/lb @ 1300 RPM
Number of cylinders	6
Bore and stroke	6.25" x 6.25" (159mm x 159mm)
Total displacement	1150 in3 (18,853 cm3)
Alternator	AC24V-1800W (75 amp)
Starting motor	24V-8.9kw (12HP)
Battery	12V-200AH, 2 units
Governor	All-speed, electrical type

TORQUE CONVERTER AND TRANSMISSION	
Torque converter	3 elements, single stage, 1-phase
Torque stall ratio	2.95:1
Main clutches	Wet hydraulic, multi-disc type
Cooling method	Forced circulation type
Transmission	Full powershift, 4 forward, 3 reverse with automatic mode (2nd-4th) with downshift switch for 2nd-1st downshifting. Autobrake protects transmission from overspeeding
Speeds Forward	1st: 4.1 MPH (6.6km/hr) 2nd: 7.6 MPH (12.2km/hr) 3rd: 12.7 MPH (20.4 km/hr) 4th: 19.3 MPH (31.1 km/hr)
Speeds Reverse	1st: 4.4 MPH (7.1 km/hr) 2nd: 8.1 MPH (13.1 km/hr) 3rd: 13.5 MPH (21.8 km/hr)

SERVICE REFILL CAPACITY			
LOCATION	CAPACITY:	Gallons	Liters
Engine (coolant)		34	(128)
Fuel tank (diesel fuel)		164	(620)
Engine (oil pan)		18	(67)
Front axle (gear oil)		48	(180)
Rear axle (gear oil)		48	(180)
Torque converter and transmission (engine oil)		22	(85)
Hydraulic system including tank (hydraulic oil)		124	(470)
Brake oil tank (engine oil)		1.1	(4)

HYDRAULIC AND STEERING SYSTEM		
Steering type	Articulated frame steering	
Steering mechanism	Hydraulic power steering unit, pilot operated type	
Lift (boom) cylinder	Two (2) double-acting piston type: 8 <sup>7</sup> / <sub>8</sub> " x 3 8 <sup>9</sup> / <sub>16</sub> " (225mm x 1132mm)	
Tilt (bucket) cylinder	Two (2) double-acting piston type: 7 <sup>1</sup> / <sub>2</sub> " x 2 6 <sup>3</sup> / <sub>16</sub> " (190mm x 767mm)	
Steering cylinder	Two (2) double-acting piston type: 4 <sup>5</sup> / <sub>16</sub> " x 2 4 <sup>3</sup> / <sub>8</sub> " (110mm x 720mm)	
Steering oil pump (double section)	Gear type: 109.4 GPM @ 2000 RPM (414 LPM @ 2000 RPM)	
Main oil pump	Gear type: 48.1 GPM @ 2000 RPM (182 LPM @ 2000 RPM)	
Pilot/Brake oil pump	Gear type: 25.9 GPM @ 2000 RPM (98 LPM @ 2000 RPM)	
Relief set pressure	Loading	3000 psi (210 kg/cm <sup>2</sup> )
	Steering	3000 psi (210 kg/cm <sup>2</sup> )
HYDRAULIC CYCLE TIME*		
Lifting time (at full load)	8.7 sec.	
Lowering time (empty)	4.4 sec.	
Bucket dumping time	2.1 sec.	
TOTAL	15.2 sec.	

\* Measured in accordance with SAE J732C

AXLE SYSTEM		
Drive system	4-wheel drive	
Front and rear axle	Full floating banjo type	
Tires	Standard	35/36-33-24PR (L-4)
	Optional	35/65-33-24PR (L-5) 29.5-29-28PR (L-3) (L-4) (L-5)
Reduction & differential gear	Spiral bevel gear, 1 stage reduction	
Final reduction gear	Outboard mounted, internal planetary gear	
Oscillation angle	±13° (total 26°)	

BRAKE SYSTEM	
Service brakes	4 wheel adjustment-free, wet multiple disc brake. Controlled by full hydraulic system. Dual circuit
Parking/Emergency brake	Spring applied air released and oil applied accumulator type, located in front driveline.

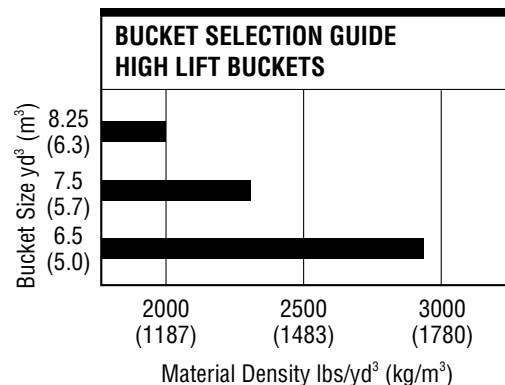
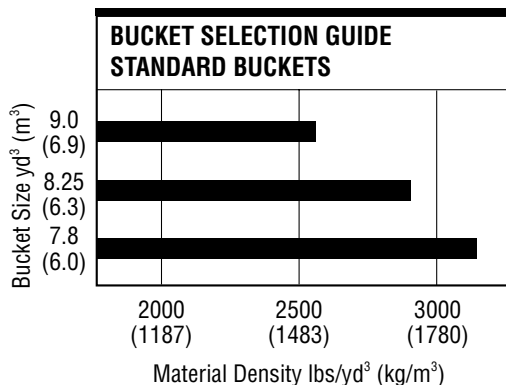
# 115Z<sup>IV</sup>-2 EQUIPMENT DATA

## STANDARD EQUIPMENT

Adjustable Steering Column	(Bolt-On)	Engine Coolant Temperature	Radiator: Heavy Duty
Air Cleaner (Double Element Donaldson with Precleaner)	Brake Line Protection (Front)	Fuel Level	Plate Fin Type
Air Conditioner (R134 Refrigerant)	Brake (Parking) Spring applied; Oil released, Drum type	Hour Meter	Radiator Grille, Hinged
Alarms (Audible): Auto Brake Brake Oil Level Engine Oil Pressure	Brakes (Service) Oil/Oil Actuation Enclosed Wet Disc Dual System	Hydraulic Oil Level	Reverse Alarm
Alarms (Visual): Air Filter Auto Brake Battery Discharge Brake Oil Level Converter Oil Temperature Engine Oil Pressure Engine Coolant Temperature Parking Brake	Bucket Control Lever (Dual, Pilot Assisted)	Tachometer	Ride Control
Alternator (75 amp)	Bucket Leveler	Heater/Pressurizer (40,000 BTU)	ROPS Cab: Enclosed cab with sound suppression, front lights, front and rear wipers and washers, one rear view and two side mirrors, tinted glass, rear lights and sliding side windows
AM/FM Cassette Radio	Boom Kickout	Hoodsides (Hinged)	Safety Articulation Locking Bar
Auto Brake	Coat Hook	Horn (Electric)	Seat (Super Deluxe, Adjustable Suspension, Headrest and Adjustable Arm Rests)
Batteries: 12V-200AH (2 units)	Cold Start Aid	Indicators: High Beam Parking Brake Transmission Declutch Transmission Shift Monitor Working Light	Seat Belt, Retractable, 3" wide
Belly Guard for Engine	Cup Holder	Linkage (Dual Z-type, Sealed)	Shift Control Unit for Automatic Shift
	Downshift Button	Lights: 4 Front 4 Rear 2 Stop/Tail 2 Backup	Transmission Declutch Selector Switch
	Drawbar	Muffler	Vandalism Protection
	Electrical System (24 volt)	Neutral Safety Start	Wrist Rest, Adjustable
	Fan (Blower)	Operator's Manual Box	
	Fenders (Front and Rear)		
	Gauges: Converter Oil Temperature		

## OPTIONAL EQUIPMENT

Belly Guard, Hinged	Counterweight	High Lift Arm	Seat, Air Ride
Bolt-On Cutting Edge Segments	Cushion Dump Valve	Hydraulic System, 3-Spool Valve	Turn Signal With Four-Way flasher
Bucket Teeth	Easy Clean Radiator	K-Lever Stick Steering	
Converter, 12v	Side-by-Side	Lighting System	
	Emergency Steering		





# KAWASAKI LOADERS

*More Than A Machine, A Complete Solution*

Kawasaki Construction Machinery Corp. of America, a division of Kawasaki Heavy Industries, is a leading supplier of a full range of high quality wheel loaders. In fact, Kawasaki is the oldest on-going manufacturer of rubber-tired wheel loaders in the world. With over 35 years of proven performance history, Kawasaki wheel loaders have continuously evolved to bring you the best in equipment and support services, backed by a carefully selected dealer network.

Kawasaki articulated wheel loaders incorporate innovative design features coupled with extensive knowledge and experience gained from real-world applications. Kawasaki pioneered Z-Link design to provide unmatched utility, high breakout force and efficiency in its machines. Powered by proven emissions-compliant Cummins diesel engines, durability and serviceability are designed into every Kawasaki loader.

Kawasaki loaders are assembled at the company's modern facilities in Newnan, GA. Service and support operations are headquartered in Kennesaw, GA.

A state-of-the-art parts distribution system links dealers with the main parts warehouse, allowing them to order parts directly. Qualified craftsmen rebuild components for all Kawasaki models at our fully-equipped rebuild center, making component exchange easier and faster. An independent oil analysis program allows monitoring of critical systems to reduce unscheduled downtime.



The independent dealers that represent and support Kawasaki loaders are experts in their markets and are dedicated to providing you with the best service available. Together, we are committed to making your investment in a Kawasaki loader a sound business decision that will pay dividends for years to come.



 **Kawasaki**  
KAWASAKI CONSTRUCTION MACHINERY  
CORP. OF AMERICA

2140 Barrett Park Drive • Suite 101  
P.O. Box 1657  
Kennesaw, Georgia 30144  
Tel: 770-499-7000  
Fax: 770-421-6842  
[www.kawasakiloaders.com](http://www.kawasakiloaders.com)

