

HYDRAULIC CRAWLER CRANE

KOBELCO

CKE1800

Max. Lifting Capacity: 180 t
Max. Boom Length: 85.3 m
Max. Jib Length: 30.5 m
Max. Luffing Jib: 51.8 m

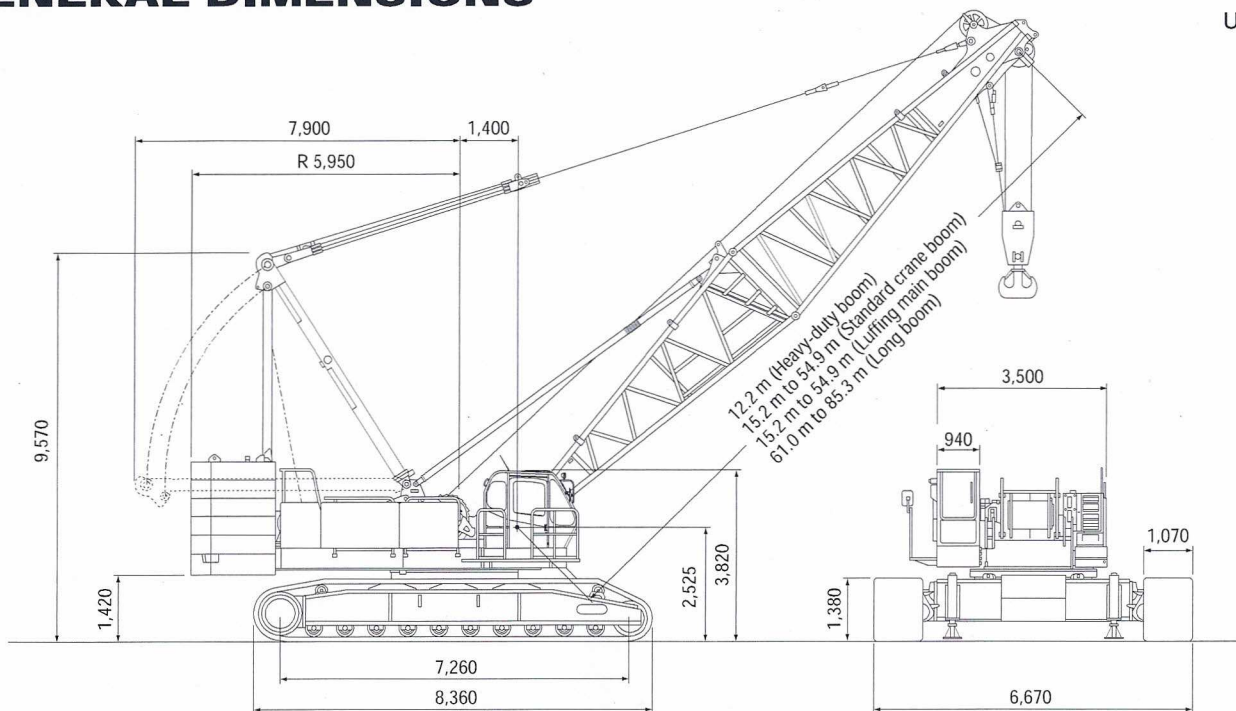
S P E C I F I C A T I O N S

Heavy Duty Boom	
Max. Lifting Capacity	180 t/3.75 m
Max. Length	12.2 m
Standard Crane Boom	
Max. Lifting Capacity	160 t/4.4 m
Max. Length	85.3 m
Luffing Main Boom	
Max. Lifting Capacity	110 t/5.2 m
Max. Length	54.9 m
Long Boom	
Max. Lifting Capacity	40.1 t/12 m
Max. Length	61.0-85.3 m
Fixed Jib	
Max. Lifting Capacity	26.8 t
Max. Length	30.5 m
Max. Combination	73.2 m + 30.5 m
Luffing Jib	
Max. Lifting Capacity	48.5 t/9.14 m
Length	21.3 m ~ 51.8 m
Combination	21.3 m ~ 54.9 m + 51.8 m
Luffing Angle	60° ~ 88°
Power Plant	
Model	Mitsubishi 6D24-TLU2D
Engine Output	235 kW/2,000 rpm
Fuel Tank Capacity	400 liters

Main & Aux. Winch	
Max. Line Speed	100 m/min (1st layer)
Rated Line Pull	132 kN (13.4 tf)
Max. Line Pull	245 kN (25.0 tf) (1st layer)
Wire Rope Diameter	25 mm
Wire Rope Length	430 m (main) 335 m (aux.)
Brake Type	Wet-type multiple disc brake
Free Fall	Option
Working Speed	
Swing	2.6 min ⁻¹ (rpm)
Travel	1.1/0.7 km/h
Hydraulic System	
Pumps	3 variable displacement
Max. Pressure	31.9 MPa (325 kg/cm ²)
Hydraulic Tank Capacity	550 liters
Self Erection Device	
	Standard
Weight	
Operating Weight	Approx. 164 t
Counterweight	60.6 t (upper) + 20.0 t (lower)
Transportation Weight	43.1 t (with trans lifter)
Ground Pressure (Ave.)	91 kPa (0.93 kgf/cm ²)

GENERAL DIMENSIONS

Unit: mm



KOBELCO CRANES CO., LTD.

MAIN BOOM LIFTING CAPACITY

Unit: ton

Boom length m (ft)	12.2 (40)	15.2 (50)	18.3 (60)	21.3 (70)	24.4 (80)	27.4 (90)	30.5 (100)	33.5 (110)	36.6 (120)	39.6 (130)	42.7 (140)	45.7 (150)	48.8 (160)	51.8 (170)	54.9 (180)	57.9 (190)	61.0 (200)	64.0 (210)	67.1 (220)	70.1 (230)	73.2 (240)	76.2 (250)	79.2 (260)	82.3 (270)	85.3 (280)
4.0	3.75m/180.0	4.4m/160.0	4.9m/144.2																						
5.0	141.6	141.6	141.6	5.4m/131.4	5.9m/121.3																				
6.0	119.3	119.3	119.3	119.3	119.3	6.4m/112.0	6.9m/103.9																		
7.0	102.7	102.7	102.7	102.7	102.7	102.7	102.5	7.4m/97.1	7.9m/90.6																
8.0	89.5	89.5	89.5	89.5	89.5	89.5	89.5	89.5	89.5	8.4m/80.3	8.9m/76.8														
9.0	79.0	79.0	79.0	79.0	79.0	79.0	79.0	79.0	79.0	78.4	76.3	9.4m/70.6													
10.0	71.5	71.5	71.5	71.5	71.5	71.5	71.5	71.5	71.5	70.2	68.4	66.6	10.0m/65.4	10.5m/60.7	11.0m/56.4	11.5m/52.4									
12.0		58.8	58.7	58.6	58.5	58.4	58.3	58.2	58.2	57.8	56.5	55.1	54.0	52.8	51.5	50.5	12.0m/48.3	12.5m/44.7	13.0m/41.2	13.5m/38.0					
14.0		47.2	47.7	47.6	47.4	47.3	47.2	47.0	47.0	46.9	46.7	46.5	46.0	45.0	43.9	43.2	42.3	41.5	40.1	37.5	36.1	35.3	34.8	32.2	30.1
16.0		14.8m/41.9	40.2	40.1	39.9	39.8	39.6	39.4	39.4	39.3	39.1	38.9	38.8	38.6	38.1	37.5	36.7	36.1	35.3	34.8	32.2	30.1	27.9	25.3	23.3
18.0			17.5m/35.9	34.4	34.2	34.1	34.0	33.7	33.7	33.6	33.3	33.2	33.1	32.9	32.7	32.7	32.3	31.8	31.1	30.7	29.8	27.8	25.9	22.9	19.0
20.0				30.1	29.8	29.6	29.5	29.3	29.2	29.1	28.9	28.7	28.6	28.4	28.3	28.2	28.0	27.9	27.7	27.3	26.7	25.8	23.9	20.9	17.2
22.0				20.1m/29.9	26.5	26.3	26.2	25.9	25.8	25.7	25.5	25.3	25.3	25.0	24.9	24.8	24.6	24.5	24.4	24.2	24.0	23.6	22.0	19.1	15.6
24.0					22.7m/25.4	23.6	23.4	23.2	23.0	22.9	22.7	22.5	22.4	22.2	22.1	22.0	21.9	21.7	21.6	21.4	21.4	21.3	20.3	17.5	14.2
26.0						25.4m/22.0	21.1	20.9	20.7	20.6	20.4	20.2	20.1	19.9	19.7	19.7	19.4	19.4	19.2	19.0	19.0	18.9	18.7	16.0	13.0
28.0							28.0m/19.2	19.0	18.8	18.7	18.5	18.3	18.2	18.0	17.8	17.7	17.5	17.5	17.3	17.1	17.0	17.0	16.8	14.7	11.8
30.0								17.4	17.2	17.1	16.9	16.7	16.6	16.4	16.2	16.1	15.9	15.8	15.6	15.5	15.4	15.3	15.2	13.5	10.8
32.0								30.7m/16.9	15.8	15.7	15.4	15.2	15.1	14.9	14.7	14.6	14.4	14.3	14.2	14.0	13.9	13.8	13.7	12.4	9.9
34.0									33.3m/15.0	14.4	14.2	14.0	13.9	13.6	13.5	13.4	13.2	13.1	12.9	12.8	12.7	12.6	12.4	11.4	9.0
36.0										35.9m/13.4	13.1	13.0	12.8	12.6	12.4	12.3	12.1	12.0	11.9	11.7	11.6	11.5	11.3	10.4	8.2
38.0											12.2	12.1	11.8	11.7	11.4	11.3	11.2	11.1	10.9	10.8	10.7	10.5	10.3	9.6	7.4
40.0										38.6m/12.0	11.1	11.0	10.7	10.6	10.4	10.2	10.2	10.0	9.8	9.7	9.6	9.4	8.7	6.7	6.7
42.0											41.2m/10.7	10.3	10.0	9.9	9.7	9.5	9.4	9.3	9.1	9.0	8.9	8.7	8.0	6.0	6.0
44.0												43.8m/9.7	9.4	9.2	9.0	8.9	8.8	8.5	8.4	8.3	8.2	8.0	7.3	5.4	5.4
46.0													8.7	8.5	8.4	8.2	8.1	7.9	7.7	7.6	7.5	7.4	6.6	4.8	4.8
48.0													46.5m/8.6	8.0	7.9	7.6	7.6	7.4	7.2	7.1	7.0	6.8	6.0	4.2	4.2
50.0														49.1m/7.7	7.4	7.1	7.0	6.9	6.7	6.6	6.5	6.3	5.4	3.7	3.7
52.0															51.8m/6.9	6.7	6.6	6.4	6.2	6.0	5.9	5.8	4.8	3.2	3.2
54.0																6.2	6.2	6.0	5.7	5.6	5.5	5.3	4.3	2.7	2.7
56.0																54.4m/6.1	5.8	5.5	5.3	5.2	5.0	4.8	3.8	2.2	2.2
58.0																	57.0m/5.5	5.1	4.9	4.7	4.6	4.4	3.3	1.8	1.8
60.0																		59.7m/4.8	4.5	4.4	4.2	4.0	2.8	59.0m/1.6	1.6
62.0																			4.2	4.0	3.9	3.7	2.4	2.4	2.4
64.0																				62.3m/4.1	3.7	3.6	3.3	1.9	1.9
66.0																					65.0m/3.5	3.2	2.9	65.0m/1.7	1.7
68.0																						67.6m/3.0	2.4	2.4	2.4
70.0																							70.0m/2.0	2.0	2.0

- Note: 1. Rating according to DIN 15018/3 and prEN 13000.
 2. Rating shown in [] are determined by the strength of the boom or other structural components.
 3. Instruction in the operator's manual must be strictly observed when operating the machine.
 4. ★ 1: With heavy duty boom top.

FIXED JIB LIFTING CAPACITY

(counterweight: 60.6 t, carbodyweight: 20.0 t, without main hook)

Jib Offset Angle: 10°

Boom length	24.4 m		48.8 m		73.2 m		
	Jib length	12.2 m	30.5 m	12.2 m	30.5 m	12.2 m	30.5 m
9.0 m	9.8 m/26.8						
10.0 m	26.8						
12.0 m	26.5		13.4 m/26.8				
14.0 m	23.1	14.0 m/6.1	26.6				
16.0 m	20.7	5.9	25.6				
18.0 m	19.2	5.8	24.1	18.3 m/6.0	18.3 m/19.1		
20.0 m	18.0	5.6	23.0	5.9	18.8		
22.0 m	16.9	5.3	21.8	5.8	18.4	22.9 m/6.0	
24.0 m	16.0	5.0	20.8	5.7	18.0	5.9	
26.0 m	15.2	4.8	19.9	5.6	17.6	5.8	
28.0 m	14.4	4.6	18.3	5.4	16.9	5.7	
30.0 m	13.7	4.4	16.6	5.2	15.2	5.6	
34.0 m	33.5 m/12.7	4.0	13.9	4.9	12.5	5.4	
38.0 m		3.7	11.8	4.5	10.4	5.2	
42.0 m		3.4	10.2	4.3	8.8	4.9	
46.0 m		3.2	8.8	4.0	7.3	4.6	
50.0 m		3.0	7.7	3.8	6.3	4.4	
54.0 m		50.3 m/3.0	6.8	3.6	5.3	4.2	
58.0 m			54.9 m/6.6	3.4	4.4	4.0	
62.0 m				3.3	3.5	3.8	
66.0 m				3.2	2.8	3.6	
70.0 m				3.0	2.1	2.9	
74.0 m				70.1 m/3.0	70.1 m/2.0	2.4	
78.0 m						77.7 m/2.0	

Jib Offset Angle: 30°

Boom length	24.4 m		48.8 m		73.2 m		
	Jib length	12.2 m	30.5 m	12.2 m	30.5 m	12.2 m	30.5 m
12.0 m	13.4 m/17.2						
14.0 m	17.2						
16.0 m	16.0						
18.0 m	15.2		18.3 m/16.9				
20.0 m	14.3		16.5		21.3 m/17.2		
22.0 m	13.5		16.1		17.1		
24.0 m	12.7	24.4 m/4.1	15.6		16.7		
26.0 m	12.1	4.0	15.1	27.4 m/4.2	16.4		
28.0 m	11.6	3.9	14.5	4.1	16.0		
30.0 m	11.2	3.7	14.0	4.0	15.6	32.0 m/4.1	
34.0 m	33.5 m/10.6	3.4	13.1	3.8	13.1	4.0	
38.0 m		3.3	12.1	3.6	10.9	3.9	
42.0 m		3.1	10.4	3.4	9.1	3.7	
46.0 m		3.0	9.0	3.4	7.7	3.6	
50.0 m		2.9	48.8 m/8.2	3.2	6.5	3.4	
54.0 m		51.8 m/2.9		3.1	5.6	3.4	
58.0 m				3.0	4.6	3.3	
62.0 m				2.9	3.7	3.2	
66.0 m				2.9	2.9	3.1	
70.0 m				67.1 m/2.9	67.1 m/2.8	3.0	
74.0 m						2.9	