

# HYDRAULIC CRAWLER CRANE

# KOBELCO

# CKE2000

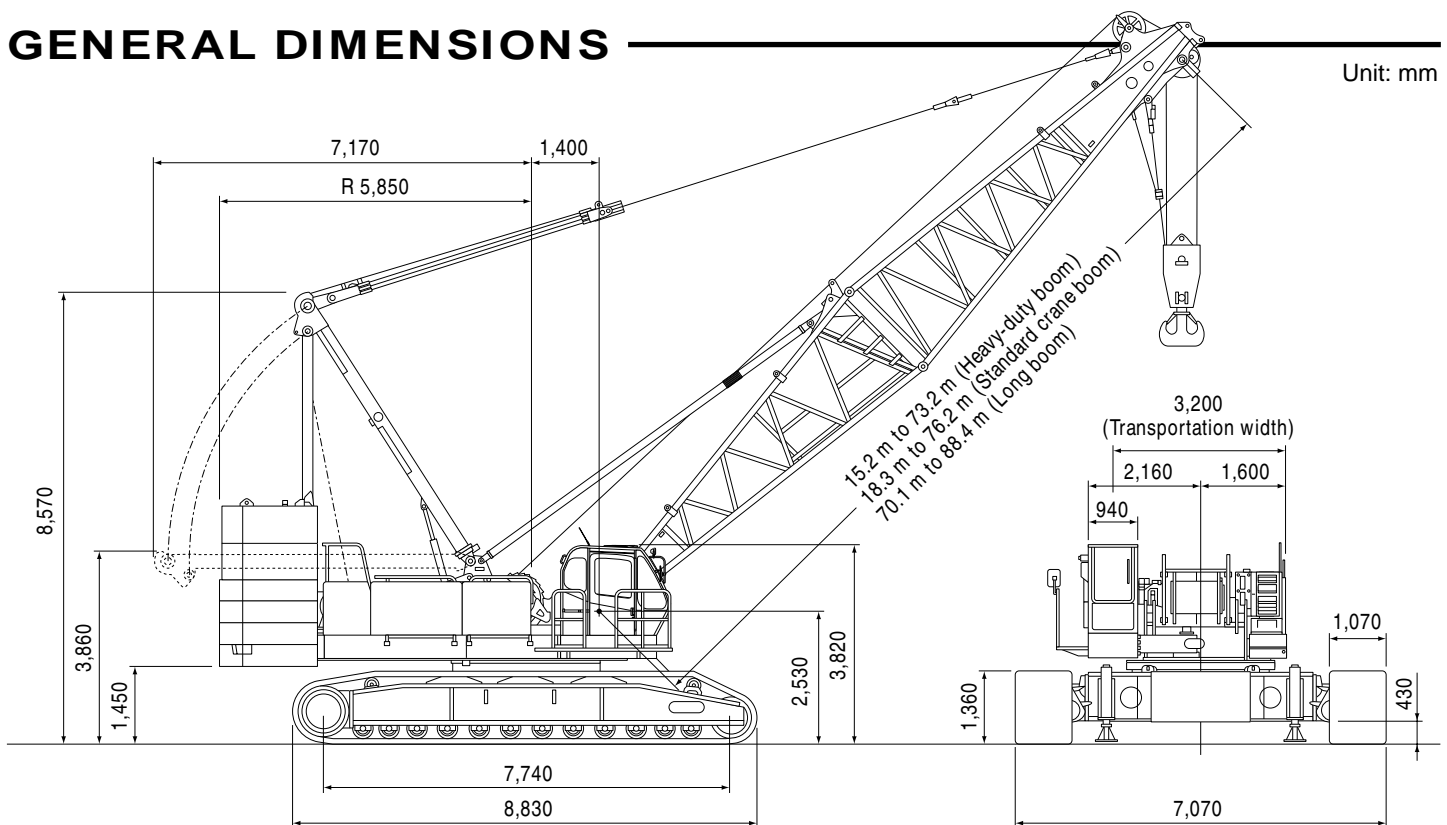
**Max. Lifting Capacity: 200 t**  
**Max. Boom Length: 88.4 m**  
**Max. Fixed Jib Combination: 73.2 + 30.5 m**  
**Max. Luffing Jib Combination: 58.0 + 48.8 m**

## S P E C I F I C A T I O N S

Heavy-duty Boom	
Max. Lifting Capacity	200 t/5.0 m (Heavy Boom)
Max. Length	73.2 m
Standard Crane Boom	
Max. Lifting Capacity	150 t/6.5 m
Max. Length	76.2 m
Fixed Jib	
Max. Lifting Capacity	20.5 t / 13.0 m
Max. Combination	73.2 m + 30.5 m
Long Boom	
Max. Length	88.4 m
Luffing Jib	
Max. Combination	58.0 m + 48.8 m
Main & Aux. Winch	
Max. Line Speed	110 m/min (1st layer)
Rated Line Pull	132 kN (13.5 tf)
Max. Line Pull	245 kN (25 tf)
Wire Rope	28 mm
Wire Rope Length	370 m (Main) 210 m (Aux.)
Brake Type	Wet-type multiple disc brake
Free-Fall	Option

Working Speed	
Swing Speed	2.1 min <sup>-1</sup> (rpm)
Travel Speed	1.1/0.7 km/h
Power Plant	
Model	Mitsubishi 6D24-TLU2D
Engine Output	235 kW/2,000 min <sup>-1</sup> (rpm)
Fuel Tank Capacity	400 liters
Hydraulic System	
Main Pumps	4 variable displacement
Max. Pressure	30.9 MPa (315 kgf/cm <sup>2</sup> )
Hydraulic Tank Capacity	550 liters
Weight	
Operating Weight	Approx. 197.0 t
Counterweight	82.2 t (upper), 20.0 t (lower)
Transport Weight	35.9 t (Main machine and carbody)
Ground Pressure	110 kPa (1.12 kgf/cm <sup>2</sup> )

## GENERAL DIMENSIONS



**KOBELCO CRANES CO., LTD.**

Courtesy of Crane.Market

# MAIN BOOM LIFTING CAPACITY

Rated loads in metric tons for 360° working area (Heavy-duty boom, Counterweight: 82.2 t, Carbody weight: 20.0 t)

Crawlers fully extended

Boom length m (ft)	18.3 (60)	21.3 (70)	24.4 (80)	27.4 (90)	30.5 (100)	33.5 (110)	36.6 (120)	39.6 (130)	42.7 (140)	45.7 (150)	48.8 (160)	51.8 (170)	54.9 (180)	57.9 (190)	61.0 (200)	64.0 (210)	67.1 (220)	70.1 (230)	73.2 (240)	
Working radius (m)	5.0	5.0/200.0																		
	5.5	182.0	5.5/182.0																	
	6.0	168.0	168.0	6.0/167.0																
	6.5	156.0	156.0	155.0	6.5/155.0															
	7.0	144.5	144.5	144.5	143.5															
	7.5	135.5	135.5	135.5	134.5	7.5/134.5														
	8.0	127.5	127.5	126.5	126.5	126.5	8.0/123.5													
	9.0	111.5	113.5	113.5	112.5	111.5	108.5	9.0/105.5	9.0/102.5											
	10.0	98.3	100.5	101.5	101.5	99.2	96.7	94.2	91.7	10.0/89.3	10.0/83.0									
	11.0	86.7	88.9	90.2	90.9	89.1	86.9	84.9	82.7	80.6	78.9	11.0/72.4	11.0/64.5							
	12.0	77.0	79.2	80.8	82.2	80.7	78.9	77.1	75.3	73.5	71.9	70.3	63.3	12.0/56.2	12.0/50.9					
	13.0	69.1	71.2	72.7	74.0	73.3	72.2	70.6	69.0	67.4	66.0	64.6	62.2	55.1	49.9	13.0/45.0	13.0/40.7			
	14.0	62.4	64.4	65.8	67.1	67.1	66.4	65.0	63.6	62.1	60.9	59.7	58.4	54.1	49.0	44.2	39.9	14.0/36.0	14.0/32.4	
	15.0	56.6	58.7	60.0	61.3	61.0	60.9	60.2	58.9	57.6	56.5	55.4	54.2	53.1	48.1	43.4	39.2	35.3	31.8	15.0/28.7
	16.0	51.5	53.7	55.0	56.2	56.0	55.8	55.7	54.9	53.6	52.7	51.6	50.5	49.7	47.2	42.7	38.5	34.7	31.2	28.1
	18.0		45.5	46.9	47.9	47.7	47.6	47.4	47.2	46.9	46.2	45.3	44.3	43.6	42.6	41.2	37.2	33.4	30.1	27.1
	20.0		20.0/38.6	40.4	41.5	41.5	41.3	41.2	40.9	40.6	40.5	40.2	39.3	38.7	37.8	37.3	35.9	32.2	29.0	26.0
	22.0			22.0/35.0	36.3	36.6	36.5	36.3	36.0	35.7	35.5	35.3	35.1	34.7	33.9	33.4	32.7	31.1	27.9	25.1
	24.0				24.0/31.9	32.6	32.5	32.3	32.0	31.7	31.5	31.3	31.0	31.0	30.6	30.1	29.5	28.8	26.9	24.1
	26.0					26.0/29.0	29.2	29.0	28.7	28.4	28.3	28.0	27.7	27.6	27.3	27.2	26.7	26.0	25.7	23.3
	28.0						26.5	26.3	26.0	25.7	25.5	25.3	25.0	24.8	24.5	24.4	24.2	23.7	23.4	22.4
	30.0						30.0/24.2	24.0	23.6	23.3	23.1	22.9	22.6	22.5	22.2	22.0	21.8	21.4	21.4	20.8
	32.0							32.0/22.0	21.6	21.3	21.1	20.9	20.6	20.5	20.1	20.0	19.7	19.4	19.3	19.0
	34.0								34.0/19.9	19.6	19.4	19.1	18.8	18.7	18.3	18.2	18.0	17.6	17.5	17.2
	36.0									18.0	17.8	17.5	17.2	17.1	16.8	16.7	16.4	16.1	16.0	15.6
	38.0									38.0/16.7	16.5	16.2	15.9	15.8	15.4	15.3	15.0	14.7	14.6	14.3
	40.0										40.0/15.3	15.0	14.7	14.5	14.2	14.0	13.8	13.4	13.4	13.0
	42.0											42.0/13.9	13.6	13.4	13.1	12.9	12.7	12.3	12.2	11.9
	44.0												12.6	12.5	12.1	11.9	11.7	11.3	11.2	10.9
	46.0												46.0/11.8	11.6	11.2	11.1	10.8	10.4	10.3	10.0
	48.0													48.0/10.8	10.4	10.2	10.0	9.6	9.5	9.2
	50.0														50.0/9.7	9.5	9.2	8.9	8.8	8.4
	52.0															8.8	8.6	8.2	8.1	7.7
	54.0															54.0/8.2	8.0	7.6	7.5	7.1
56.0																56.0/7.4	7.0	6.9	6.5	
58.0																	58.0/6.5	6.3	6.0	
60.0																		5.9	5.5	
62.0																		62.0/5.4	5.0	
64.0																			64.0/4.6	

- Note: 1. Rating according to DIN 15018/3 (class B2, hoist class H1) and prEN 13000.
- 2. Heavy-duty boom top is required for the load exceed 150t.
- 3. Rating shown in   are determined by the strength of the boom or other structural components.
- 4. Instruction in the operator's manual must be strictly observed when operating the machine.

# FIXED JIB LIFTING CAPACITY

(standard crane boom, counterweight: 82.2 t, carbodyweight: 20.0 t, without main hook)

Jib Offset Angle: 10°

Boom length	39.6 m		54.9 m		73.2 m	
	Jib length	12.2 m	30.5 m	12.2 m	30.5 m	12.2 m
13.0 m	13.0 m/20.5					
14.0 m	20.3					
15.0 m	20.1		15.0m/20.6			
16.0 m	19.9		20.4			
18.0 m	19.5		20.1			
20.0 m	19.1	20.0 m/5.7	19.8		20.0 m/20.2	
22.0 m	18.1	5.6	19.5	22.0 m/5.7	19.6	
24.0 m	16.9	5.5	19.2	5.6	19.0	
26.0 m	15.9	5.4	18.8	5.5	18.4	26.0 m/5.6
28.0 m	15.0	5.3	17.8	5.4	17.9	5.5
30.0 m	14.3	5.2	17.0	5.4	17.4	5.5
34.0 m	12.9	5.1	15.4	5.3	16.5	5.4
38.0 m	11.8	5.0	14.2	5.1	15.3	5.3
42.0 m	10.9	4.9	13.1	5.0	13.4	5.2
46.0 m	44.0 m/10.5	4.7	12.2	4.9	11.5	5.1
50.0 m		4.4	11.2	4.8	9.9	5.0
54.0 m		4.1	10.0	4.7	8.5	4.9
58.0 m		3.8	8.9	4.5	7.3	4.8
62.0 m		60.0 m/3.7	60.0 m/8.3	4.2	6.3	4.7
66.0 m				4.0	5.4	4.6
70.0 m				3.8	4.6	4.4
74.0 m				3.6	3.9	4.2
78.0 m				76.0 m/3.5	76.0 m/3.6	3.0
82.0 m						3.5
86.0 m						2.0
90.0 m						2.6
94.0 m						92.0 m/2.3

Jib Offset Angle: 30°

Boom length	39.6 m		54.9 m		73.2 m		
	Jib length	12.2 m	30.5 m	12.2 m	30.5 m	12.2 m	30.5 m
18.0 m	18.0 m/11.5						
20.0 m	11.0		20.0 m/11.9				
22.0 m	10.5		11.5		22.0 m/12.2		
24.0 m	10.1		11.1		11.8		
26.0 m	9.8		10.7		11.5		
28.0 m	9.4	28.0 m/4.2	10.4		11.2		
30.0 m	9.2	4.1	10.1	32.4 m/4.2	10.9		
34.0 m	8.7	3.8	9.6	4.1	10.4	36.0 m/4.1	
38.0 m	8.3	3.5	9.1	3.8	9.9	4.0	
42.0 m	8.0	3.3	8.8	3.5	9.5	3.8	
46.0 m	7.8	3.1	8.5	3.4	9.2	3.6	
50.0 m	48.0 m/7.7	2.9	8.2	3.2	8.9	3.4	
54.0 m		2.8	8.0	3.1	8.4	3.3	
58.0 m		2.7	7.9	3.0	7.6	3.2	
62.0 m		2.6	60.0 m/7.8	2.9	6.5	3.1	
66.0 m		64.0 m/2.6		2.8	5.6	3.0	
70.0 m				2.7	4.8	2.9	
74.0 m				2.6	4.1	2.8	
78.0 m					76.0 m/2.5	76.0 m/3.7	2.7
82.0 m						2.6	
86.0 m						2.5	
90.0 m						2.4	
94.0 m						92.0 m/2.3	

# BOOM ARRANGEMENT

## BOOM ARRANGEMENT CHART

### HEAVY-DUTY BOOM

Boom length m (ft)	Boom arrangement
15.2 (50)	Base-Tip
18.3 (60)	Base-A-Tip
21.3 (70)	Base-A-A-Tip
24.4 (80)	Base-A-B-Tip
27.4 (90)	Base-A-A-B-Tip
30.5 (100)	Base-A-B-B-Tip
33.5 (110)	Base-A-B-C-Tip
36.6 (120)	Base-A-A-B-C-Tip
39.6 (130)	Base-A-B-B-C-Tip
42.7 (140)	Base-A-B-C-C-Tip
45.7 (150)	Base-A-A-B-C-C-Tip
48.8 (160)	Base-A-B-B-C-C-Tip
51.8 (170)	Base-A-B-C-C-C-Tip
54.9 (180)	Base-A-A-B-C-C-C-Tip
57.9 (190)	Base-A-B-B-C-C-C-Tip
61.0 (200)	Base-A-B-C-C-C-C-Tip
64.0 (210)	Base-A-A-B-C-C-C-C-Tip
67.1 (220)	Base-A-B-B-C-C-C-C-Tip
70.1 (230)	Base-A-B-C-C-C-C-C-Tip
73.2 (240)	Base-A-A-B-C-C-C-C-C-Tip, Base-C-A-A-B-C-C-C-C-Tip

### STANDARD CRANE BOOM

Boom length m (ft)	Boom arrangement
18.3 (60)	Base-T-Tip(Li)
21.3 (70)	Base-A-T-Tip(Li)
24.4 (80)	Base-A-A-T-Tip(Li)
27.4 (90)	Base-A-B-T-Tip(Li)
30.5 (100)	Base-A-A-B-T-Tip(Li)
33.5 (110)	Base-A-B-B-T-Tip(Li)
36.6 (120)	Base-A-B-C-T-Tip(Li)
39.6 (130)	Base-A-A-B-C-T-Tip(Li)
42.7 (140)	Base-A-B-B-C-T-Tip(Li)
45.7 (150)	Base-A-B-C-C-T-Tip(Li)
48.8 (160)	Base-A-A-B-C-C-T-Tip(Li)
51.8 (170)	Base-A-B-B-C-C-T-Tip(Li)
54.9 (180)	Base-A-B-C-C-C-T-Tip(Li)
57.9 (190)	Base-A-A-B-C-C-C-T-Tip(Li)
61.0 (200)	Base-A-B-B-C-C-C-T-Tip(Li)
64.0 (210)	Base-A-B-C-C-C-C-T-Tip(Li)
67.1 (220)	Base-A-A-B-C-C-C-C-T-Tip(Li)
70.1 (230)	Base-A-B-B-C-C-C-C-T-Tip(Li)
73.2 (240)	Base-A-B-C-C-C-C-C-T-Tip(Li)
76.2 (250)	Base-A-A-B-C-C-C-C-C-T-Tip(Li), Base-C-A-A-B-C-C-C-C-T-Tip(Li)

### LONG BOOM ARRANGEMENT CHART

Boom length m (ft)	Boom arrangement
70.1 (230)	Base-A-B-C-C-C-C-T-D-Tip(Lg)
73.2 (240)	Base-A-A-B-C-C-C-C-T-D-Tip(Lg)
76.2 (250)	Base-A-A-B-C-C-C-C-T-D-E-Tip(Lg)
79.2 (260)	Base-A-A-B-C-C-C-C-T-D-F-Tip(Lg)
82.3 (270)	Base-A-A-B-C-C-C-C-T-D-E-F-Tip(Lg)
85.3 (280)	Base-A-A-B-C-C-C-C-T-D-E-G-Tip(Lg)
88.4 (290)	Base-A-A-B-C-C-C-C-T-D-F-G-Tip(Lg), Base-C-B-B-C-C-C-C-T-D-F-G-Tip(Lg)

**Note:**  
 Base Boom Length and Boom Tip Length:  
 Base = 7.6 m (25')  
 Tip = 7.6 m (25'), Tip(Li) = 5.2 m (17'), Tip(Lg) = 8.3 m (28')  
 Insert Boom:  
 A = 3.0 m (10'), B = 6.1 m (20'), C = 9.1 m (30')  
 C = 9.1 m (30') : Insert boom for tower, with guide sheave  
 T = 5.4 m (18') : Insert tapered boom  
 D = 3.0 m (10') : mid-point boom  
 E = 3.0 m (10'), F = 6.0 m (20'), G = 9.0 m (30')  
 \* E, F and G: combined use with insert jib for tower

# TOWER & JIB ARRANGEMENT

## TOWER ARRANGEMENT CHART

Boom length m (ft)	Boom arrangement
36.6 (120)	Base-C'-C-C-Cap
39.7 (130)	Base-C'-A-C-C-Cap
42.7 (140)	Base-C'-A-C-C-A-Cap
45.8 (150)	Base-C'-A-B-C-C-Cap
48.8 (160)	Base-C'-A-A-B-C-C-Cap
51.9 (170)	Base-C'-A-B-C-B-C-Cap
54.9 (180)	Base-C'-A-B-C-C-C-Cap
58.0 (190)	Base-C'-A-A-B-C-C-C-Cap

**Note:** Base Boom Length and Tower Cap Length:  
 Base = 6.1 m (20'), Cap = 1.6 m (5')  
 Insert Tower:  
 A = 3.0 m (10'), B = 6.1 m (20'), C = 9.1 m (30')  
 C' = 9.1 m (30') : Insert tower jib, with guide sheave

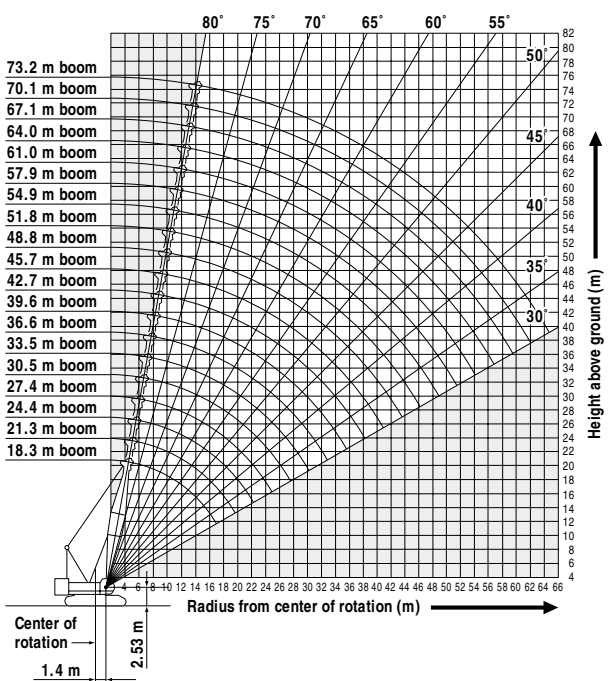
## JIB ARRANGEMENT CHART

Jib length m (ft)	Tower jib arrangement
27.4 (90)	Base-D-F-Tip(Lg)
33.5 (110)	Base-D-E-E-F-Tip(Lg)
36.6 (120)	Base-D-E-F-F-Tip(Lg)
39.6 (130)	Base-D-E-F-G-Tip(Lg)
42.7 (140)	Base-D-E-E-F-G-Tip(Lg)
45.7 (150)	Base-D-E-F-F-G-Tip(Lg)
48.8 (160)	Base-D-E-F-G-G-Tip(Lg)

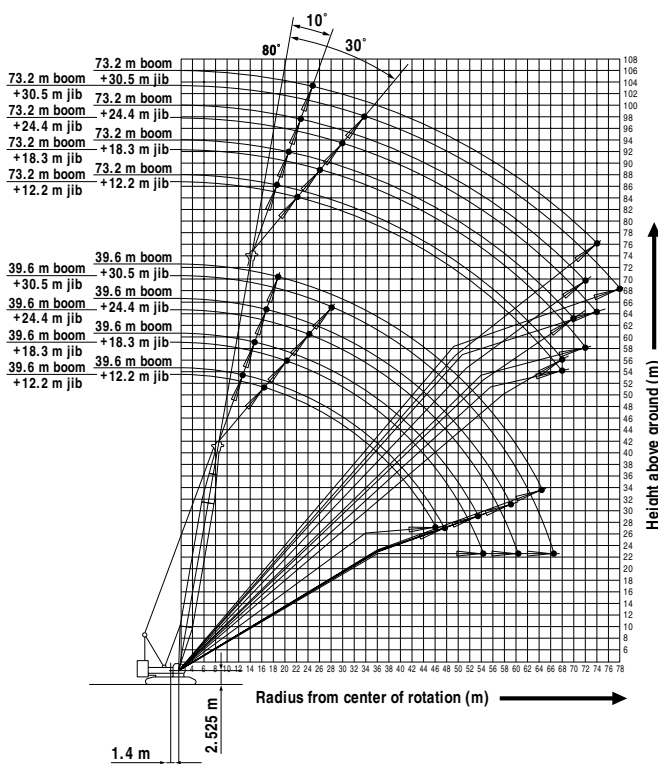
**Note:** Base Jib Length and Jib Tip Length:  
 Base = 10.0 m (33'), Tip(Lg) = 8.3 m (28')  
 Insert jib:  
 D = 3.0 m (10') : mid-point boom,  
 E = 3.0 m (10'), F = 6.0 m (20'), G = 9.0 m (30')

# WORKING RADIUS

## CRANE BOOM



## FIXED JIB (Jib Offset Angle: 10° + 30°)

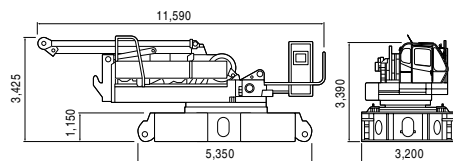


# SPECIFICATIONS OF PARTS AND ATTACHMENTS

Dimensions: mm Weight: kg

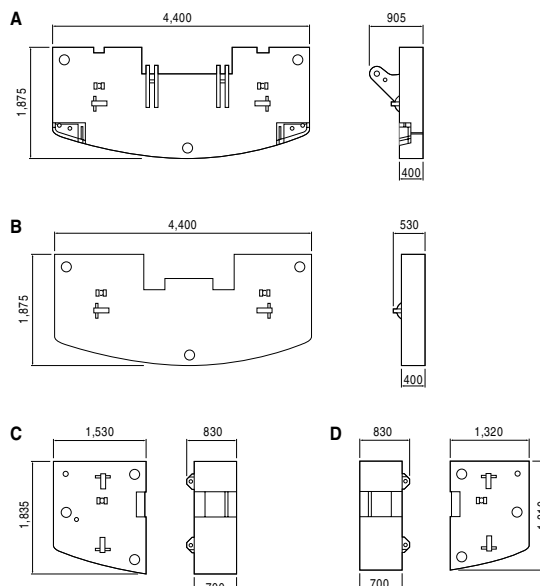
## Base Machine and Carbody

weight: 35,900 kg



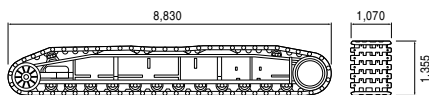
## Counterweights

Total weight: 82,200 kg (A 13,500 kg + B 12,500 kg x 3 + C 8,400 kg x 2 + D 7,200 kg x 2)



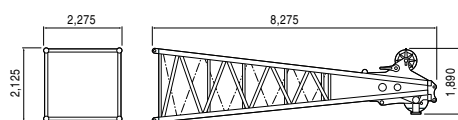
## Crawlers

weight: 23,600 kg



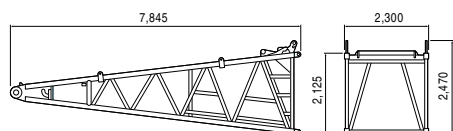
## Heavy-duty Upper Boom

weight: 3,000 kg



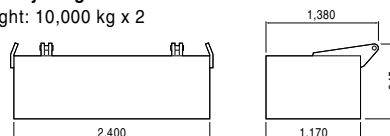
## Lower Boom

weight: 2,430 kg



## Carbody weight

weight: 10,000 kg x 2



# OTHER ATTACHMENTS

Attachment	Weight	Dimensions (L x W x H)
3.0 m (10 ft) Insert Boom	610 kg	3,175 mm x 2,275 mm x 2,125 mm
6.1 m (20 ft) Insert Boom	1,030 kg	6,225 mm x 2,275 mm x 2,125 mm
9.1 m (30 ft) Insert Boom	1,450 kg	9,270 mm x 2,275 mm x 2,125 mm
9.1 m insert tower	1,750 kg	9,270 mm x 2,275 mm x 2,125 mm
Light-duty boom tip	2,100 kg	5,725 mm x 1,525 mm x 1,525 mm
5.4 (18 ft) m insert tapered boom	840 kg	5,570 mm x 2,275 mm x 2,125 mm
Upper tower jib tip (Long boom tip)	990 kg	8,810 mm x 1,505 mm x 1,515 mm
Tower cap	2,100 kg	5,545 mm x 2,340 mm x 2,295 mm
Tower jib base	1,600 kg	10,380 mm x 2,335 mm x 1,525 mm
3.0 (10 ft) mid-point jib	320 kg	3,150 mm x 1,510 mm x 1,510 mm
3.0 m (10 ft) insert tower jib	320 kg	3,150 mm x 1,510 mm x 1,510 mm
6.1 m (20 ft) insert tower jib	535 kg	6,210 mm x 1,510 mm x 1,510 mm
9.1 m (30 ft) insert tower jib	755 kg	9,260 mm x 1,510 mm x 1,510 mm
Gantry	2,500 kg	6,110 mm x 1,760 mm x 820 mm
Tower strut	2,050 kg	7,410 mm x 2,380 mm x 1,125 mm
Upper spreader	635 kg	885 mm x 2,350 mm x 335 mm
Lower spreader	440 kg	855 mm x 1,500 mm x 320 mm
Upper spreader for tower jib	260 kg	1,020 mm x 245 mm x 765 mm
Lower spreader for tower jib	460 kg	2,275 mm x 690 mm x 835 mm
200-ton hook block	2,800 kg	700 mm x 995 mm x 2,225 mm
150-ton hook block	2,300 kg	700 mm x 715 mm x 2,665 mm
100-ton hook block	1,800 kg	700 mm x 555 mm x 2,025 mm
65-ton hook block	1,200 kg	700 mm x 385 mm x 1,815 mm
35-ton hook block	900 kg	700 mm x 365 mm x 1,575 mm
13.5-ton ball-hook	450 kg	1,200 mm x 380 mm dia.

Note: Due to our policy of continual product improvements all designs and specifications are subject to change without advance notice.



## KOBELCO CRANES CO., LTD.

17-1, Higashigotanda 2-chome, Shinagawa-ku, Tokyo 141-8626 JAPAN

Tel: ++81 (0) 3-5789-2130 Fax: ++81 (0) 3-5789-3372

Bulletin No. CKE2000-S401

04031000 Printed in Japan

Courtesy of Crane.Market