

HYDRAULIC CRAWLER CRANE

KOBELCO

CKE800

Max. Lifting Capacity: 80 t
Max. Boom Length: 54.9 m
Max. Fixed Jib Combination: 42.7 + 18.3 m

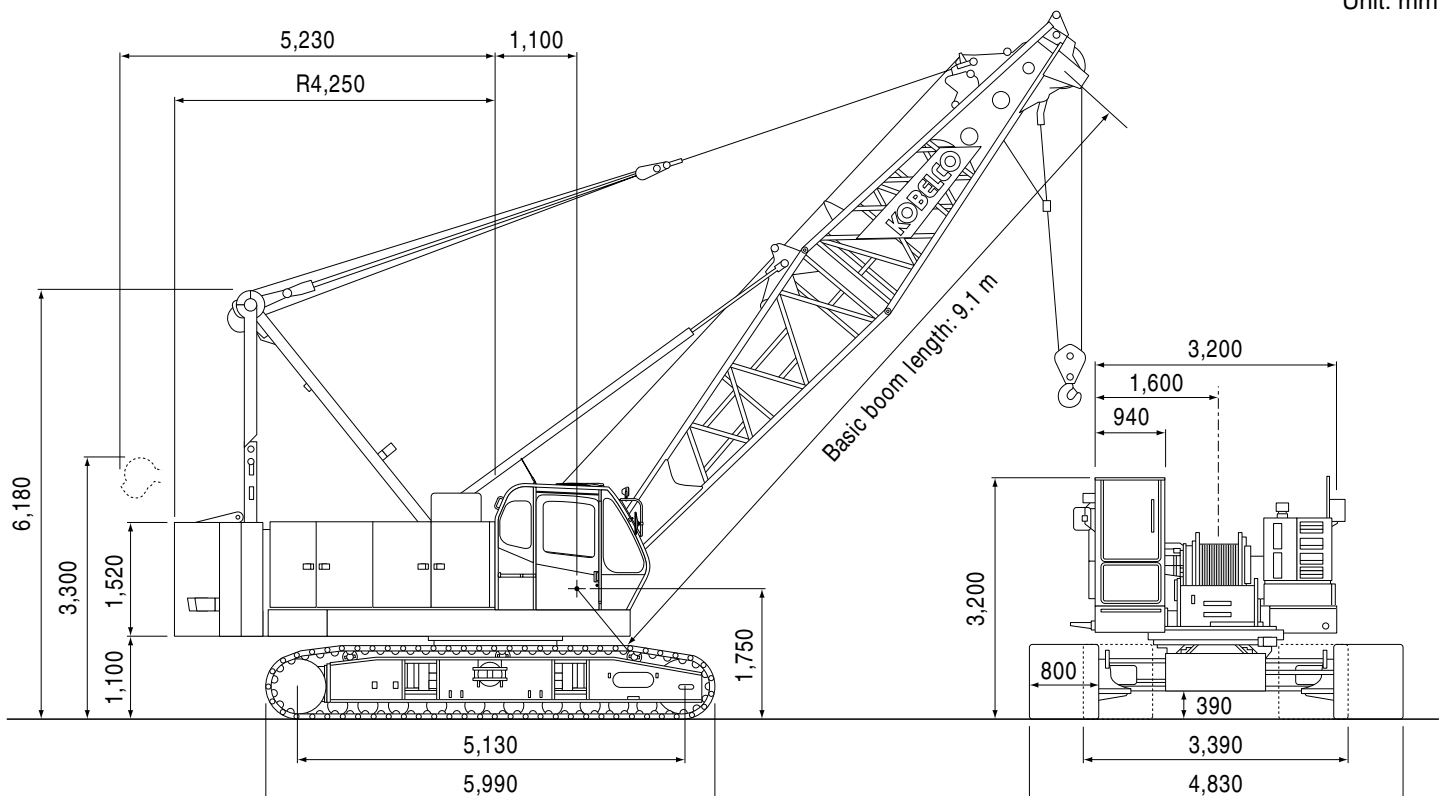
S P E C I F I C A T I O N S

Main Boom	
Max. Lifting Capacity	80 t/3.0 m
Max. Length	54.9 m
Fixed Jib	
Max. Lifting Capacity	6.6 t
Max. Combination	42.7 m + 18.3 m, 45.7m + 12.2m
Main & Aux. Winch	
Max. Line Speed	120 m/min (1st layer)
Rated Line Pull	78.5 kN (8 tf)
Max. Line Pull (Approx.)	150 kN (15.3 tf)
Wire Rope	22 mm
Wire Rope Length	215 m (Main) 125 m (Aux.)
Brake Type	Wet-type multiple disc brake
Free-Fall	Option
Working Speed	
Swing Speed	4.0 min ⁻¹ (rpm)
Travel Speed	1.9/1.2 km/h

Power Plant	
Model	Mitsubishi 6D16-TLU2K
Engine Output (Gross)	159 kW/2,000 min ⁻¹ (rpm)
Fuel Tank Capacity	400 liters
Hydraulic System	
Main Pumps	3 variable displacement
Max. Pressure	32 MPa (325 kgf/cm ²)
Hydraulic Tank Capacity	450 liters
Self-Erection Device	Standard counterweight removal
Weight	
Operating Weight	Approx. 73.8 t
Counterweight	25.8 t (upper) + 6.8 t (lower)
Transport Weight	39.9 t (Main machine with crawler and lower boom)
Ground Pressure	88 kPa (0.9 kgf/cm ²)

GENERAL DIMENSIONS

Unit: mm



KOBELCO CRANES CO., LTD.

Courtesy of Crane.Market

MAIN BOOM LIFTING CAPACITY

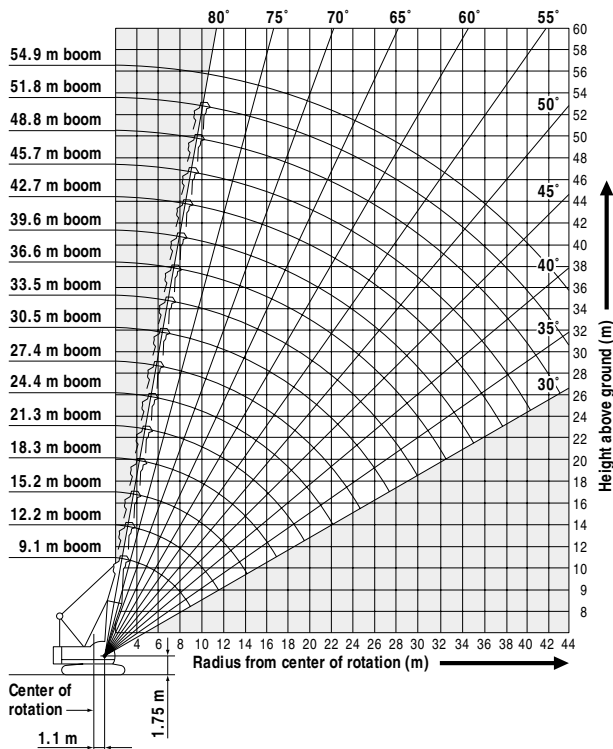
Rated loads in metric tons for 360° working area (Counterweight: 25.8 t, Carbody weight: 6.8 t)

Crawlers fully extended

Boom length m (ft)	9.1 (30)	12.2 (40)	15.2 (50)	18.3 (60)	21.3 (70)	24.4 (80)	27.4 (90)	30.5 (100)	33.5 (110)	36.6 (120)	39.6 (130)	42.7 (140)	45.7 (150)	48.8 (160)	51.8 (170)	54.9 (180)
3.0	80.0	3.6/76.2														
4.0	69.0	72.6	4.2/69.6	4.7/59.3												
5.0	57.9	57.7	57.5	55.1	5.2/50.0	5.7/42.9										
6.0	47.5	47.3	46.7	44.6	42.6	40.8	6.3/37.2	6.8/33.0								
7.0	39.8	39.6	38.9	37.3	35.8	34.5	33.3	32.0	7.3/29.5	7.9/26.4						
8.0	32.9	32.7	32.5	32.0	30.9	29.8	28.8	27.8	26.9	26.0	8.4/24.0	8.9/21.9				
9.0	26.0	27.8	27.6	27.5	27.0	26.2	25.4	24.5	23.8	23.1	22.4	21.7	9.4/20.1			
10.0	9.2/24.5	24.1	23.9	23.8	23.7	23.3	22.6	21.9	21.3	20.6	20.0	19.4	19.0	18.4	10.5/17.1	11.0/15.7
12.0		11.9/19.3	18.8	18.7	18.6	18.5	18.4	17.9	17.4	16.9	16.5	16.0	15.6	15.1	14.8	14.4
14.0			15.4	15.3	15.1	15.0	14.9	14.8	14.7	14.2	13.9	13.5	13.2	12.8	12.5	12.1
16.0			14.5/14.7	12.9	12.7	12.6	12.5	12.3	12.2	12.1	11.9	11.5	11.3	10.9	10.7	10.4
18.0				17.1/11.8	10.9	10.8	10.7	10.5	10.4	10.3	10.2	10.0	9.8	9.4	9.3	9.0
20.0					19.8/9.6	9.3	9.2	9.1	9.0	8.8	8.7	8.6	8.5	8.3	8.1	7.8
22.0						8.2	8.1	7.9	7.8	7.7	7.6	7.5	7.4	7.2	7.1	6.9
24.0						22.4/8.0	7.2	7.0	6.9	6.8	6.6	6.5	6.4	6.3	6.2	6.1
26.0							25.1/6.8	6.2	6.1	6.0	5.9	5.7	5.6	5.5	5.4	5.3
28.0								27.7/5.7	5.5	5.4	5.2	5.1	5.0	4.9	4.8	4.7
30.0									4.9	4.8	4.7	4.5	4.4	4.3	4.2	4.1
32.0									30.3/4.9	4.3	4.2	4.0	3.9	3.8	3.7	3.6
34.0										33.0/4.1	3.8	3.6	3.5	3.4	3.3	3.2
36.0											35.0/3.5	3.3	3.2	3.0	2.9	2.8
38.0												2.9	2.8	2.7	2.6	2.5
40.0												38.3/2.9	2.6	2.4	2.3	2.2
42.0													40.9/2.4	2.1	2.0	1.9
44.0														43.5/2.0	1.8	1.7
46.0															1.6	1.5
48.0																1.3
48.7																48.7/1.2

- Note: 1. Rating according to DIN 15018/3 and prEN 13000.
- 2. Rating shown in are determined by the strength of the boom or other structural components.
- 3. Instruction in the operator's manual must be strictly observed when operating the machine.

WORKING RADIUS



FIXED JIB LIFTING CAPACITY (WITHOUT MAIN HOOK)

Rated loads in metric tons for 360° working area (Jib offset angle: 10°)

Boom length	30.5 m		39.6 m		45.7 m	
	6.1 m	18.3 m	6.1 m	18.3 m	6.1 m	12.2 m
9.0 m	6.6					
10.0 m	6.6					
12.0 m	6.6	5.4	6.6		6.6	
14.0 m	6.6	5.3	6.6	5.3	6.6	6.6
16.0 m	6.6	5.2	6.6	5.3	6.6	6.6
18.0 m	6.6	5.1	6.6	5.2	6.6	6.6
20.0 m	6.6	5.0	6.6	5.1	6.6	6.6
22.0 m	6.6	4.9	6.6	5.0	6.6	6.6
24.0 m	6.6	4.9	6.4	4.9	6.2	6.2
26.0 m	6.0	4.7	5.7	4.9	5.4	5.5
28.0 m	5.3	4.5	5.0	4.8	4.8	4.9
30.0 m	4.8	4.2	4.5	4.7	4.2	4.4
32.0 m	4.3	4.0	4.0	4.3	3.7	3.9
34.0 m		3.8	3.5	3.9	3.3	3.5
36.0 m		3.6	3.2	3.5	2.9	3.1
38.0 m		3.4	2.8	3.2	2.6	2.8
40.0 m		3.3		2.9		2.5
42.0 m		3.0		2.6		2.2
44.0 m		2.8		2.4		2.0
46.0 m				2.2		1.8
48.0 m				2.0		1.6
50.0 m				1.8		1.4
52.0 m				1.6		1.3

BOOM & JIB ARRANGEMENT

CKE800

BOOM ARRANGEMENT CHART

Boom length m (ft)	Boom arrangement
9.1 (30)	Base-Tip
12.2 (40)	Base-A-Tip
15.2 (50)	Base-A-A-Tip, Base-B-Tip
18.3 (60)	Base-A-B-Tip, Base-C-Tip
21.3 (70)	Base-A-A-B-Tip, Base-A-C-Tip, Base-B-B-Tip
24.4 (80)	Base-A-B-B-Tip, Base-B-C-Tip, Base-A-A-C-Tip
27.4 (90)	Base-A-B-C-Tip, Base-C-C-Tip, Base-A-A-B-B-Tip
30.5 (100)	Base-A-A-B-C-Tip, Base-B-B-C-Tip, Base-A-C-C-Tip
33.5 (110)	Base-A-B-B-C-Tip, Base-B-C-C-Tip, Base-A-A-C-C-Tip, Base-A-A-B-B-B-Tip
36.6 (120)	Base-A-B-C-C-Tip, Base-C-C-C-Tip, Base-A-A-B-B-C-Tip
39.6 (130)	Base-A-B-B-B-C-Tip, Base-B-B-C-C-Tip, Base-A-A-B-C-C-Tip, Base-A-C-C-C-Tip
42.7 (140)	Base-A-B-B-C-C-Tip, Base-B-C-C-C-Tip, Base-A-A-C-C-C-Tip, Base-A-A-B-B-B-C-Tip
45.7 (150)	Base-A-B-C-C-C-Tip, Base-A-A-B-B-C-C-Tip
48.8 (160)	Base-A-A-B-C-C-C-Tip, Base-B-B-C-C-C-Tip
51.8 (170)	Base-A-B-B-C-C-C-Tip, Base-A-A-B-B-B-C-C-Tip
54.9 (180)	Base-A-B-B-C-C-A-C-Tip, Base-A-A-B-B-C-C-C-Tip

Base = 5.1 m (17'), Tip = 4.0 m (13')
 Inserts: A = 3.0 m (10'), B = 6.1 m (20'), C = 9.1 m (30')

JIB ARRANGEMENT CHART

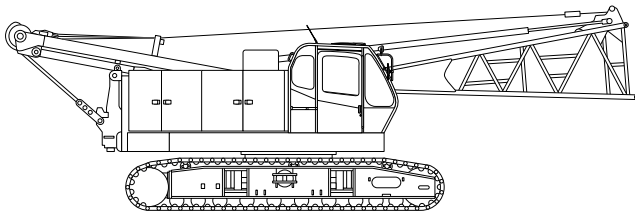
Jib length m (ft)	Jib arrangement
6.1 (20)	Base-Tip
12.2 (40)	Base-A-Tip
18.3 (60)	Base-A-A-Tip

Base = 3.0 m (10'), Tip = 3.0 m (10')
 Inserts: A = 6.0 m (20')

SPECIFICATIONS OF PARTS AND ATTACHMENTS

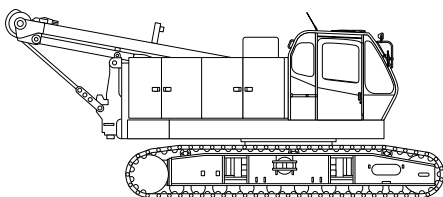
Base Machine + Boom Base + Crawler

Weight: 40,770 kg
 Dimensions: 3,300 mm height x 3,390 mm width x 11,640 mm length



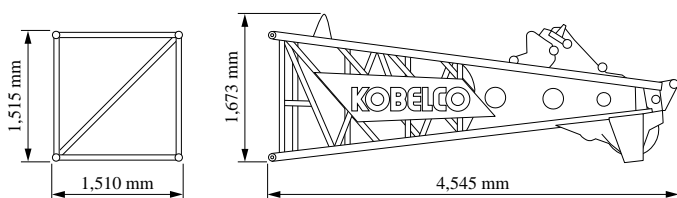
Base Machine + Crawler

Weight: 38,660 kg
 Dimensions: 3,300 mm height x 3,390 mm width x 8,300 mm length



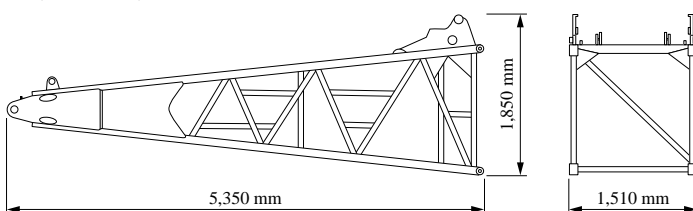
Upper Boom

Weight: 1,110 kg



Lower Boom

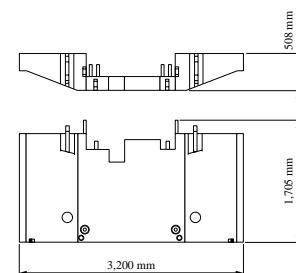
Weight: 1,130 kg



Counterweight

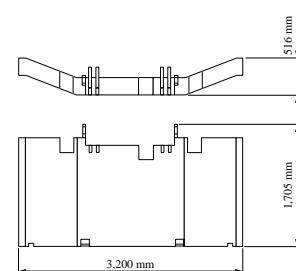
No.1 Counterweight

Weight: 8,990 kg



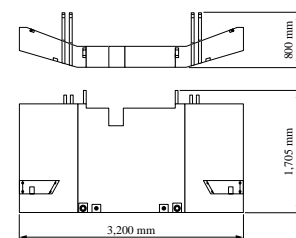
No.2 Counterweight

Weight: 7,373 kg



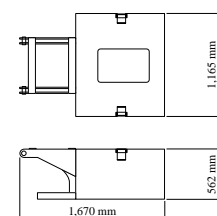
No.3 Counterweight

Weight: 9,347 kg



Carbody Weight

Weight: 3,340 kg (1 pc)



SPECIFICATIONS OF PARTS AND ATTACHMENTS

OTHER ATTACHMENT

Attachment	Weight	Dimensions (L x W x H)
3.1 m (10 ft) insert boom	311 kg	3,160 mm x 1,510 mm x 1,515 mm
6.1 m (20 ft) insert boom	522 kg	6,210 mm x 1,510 mm x 1,515 mm
6.1 m (20 ft) insert boom with lug	545 kg	6,210 mm x 1,510 mm x 1,645 mm
9.1 m (30 ft) insert boom	742 kg	9,260 mm x 1,510 mm x 1,515 mm
9.1 m (30 ft) insert boom with lug	765 kg	9,260 mm x 1,510 mm x 1,645 mm
Jib tip	145 kg	3,475 mm x 675 mm x 625 mm
Jib base	125 kg	3,190 mm x 675 mm x 625 mm
6.1 m (20 ft) insert jib	140 kg	6,160 mm x 675 mm x 625 mm
Jib strut	190 kg	3,700 mm x 670 mm x 500 mm
Auxiliary sheave	138 kg	1,010 mm x 1,310 mm
Upper spreader	280 kg	1,580 mm x 300 mm x 680 mm
Lower spreader	170 kg	870 mm x 300 mm x 610 mm
80-ton hook block	800 kg	600 mm x 384 mm x 1,705 mm
32-ton hook block	500 kg	590 mm x 327 mm x 1,530 mm
19-ton hook block	400 kg	590 mm x 385 mm x 1,270 mm
6.6-ton ball hook	160 kg	815 mm x 300 mm dia.

Note: Due to our policy of continual product improvements all designs and specifications are subject to change without advance notice.



KOBELCO CRANES CO., LTD.

17-1, Higashigotanda 2-chome, Shinagawa-ku, Tokyo 141-8626 JAPAN

Tel: ++81 (0) 3-5789-2130 Fax: ++81 (0) 3-5789-3372

Bulletin No. CKE800-S401

04031000 Printed in Japan

Courtesy of Crane.Market