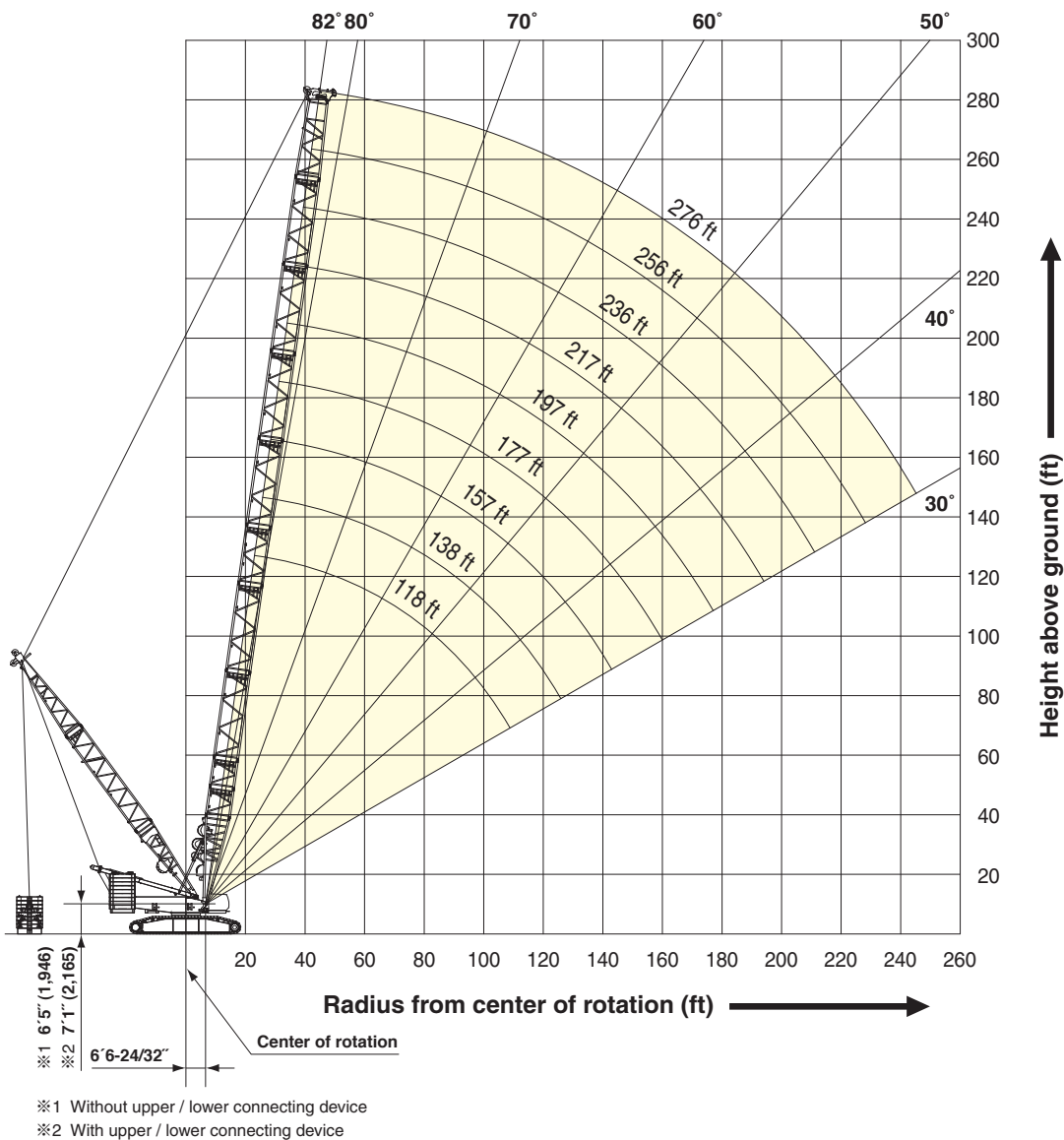


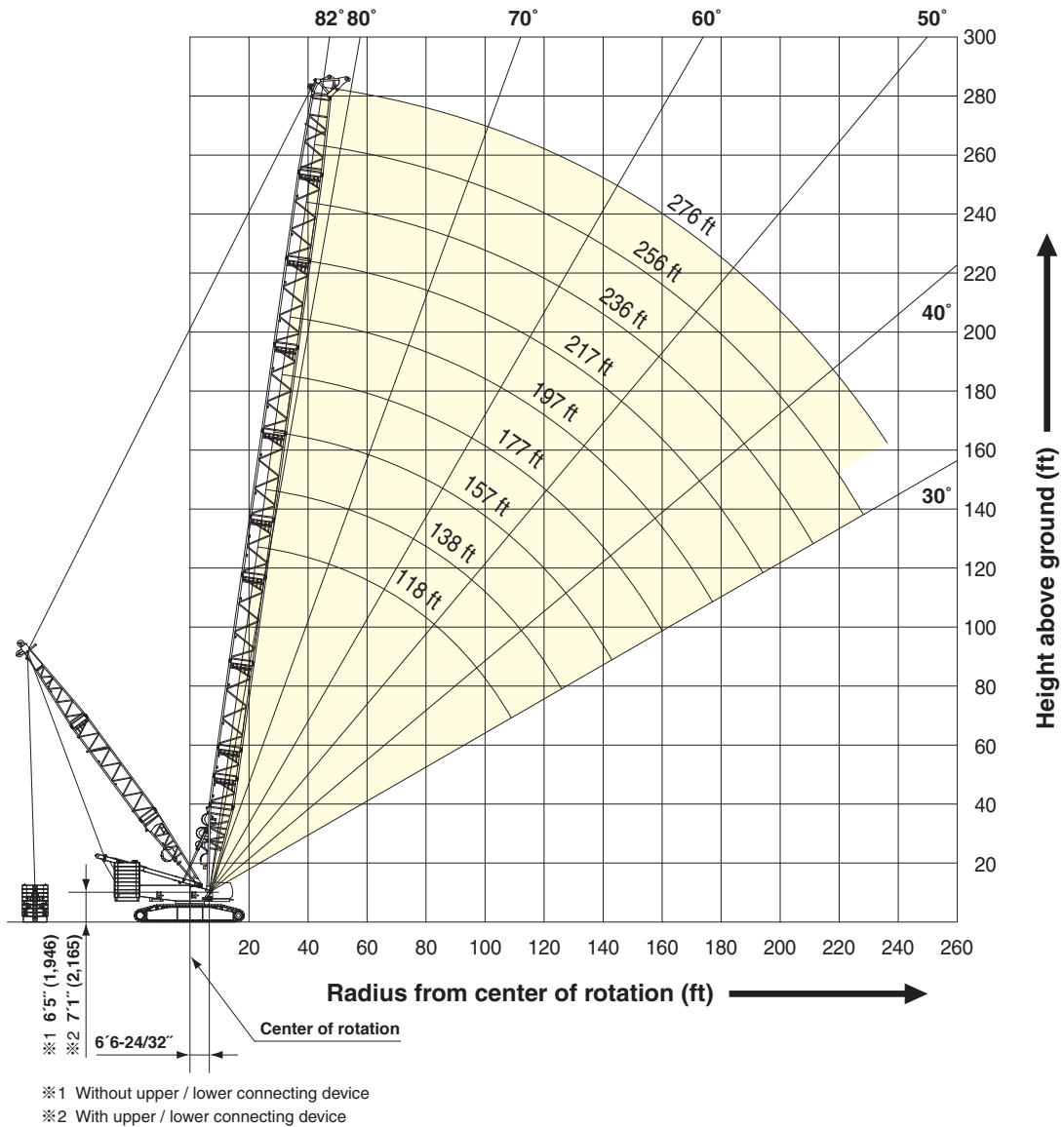
WORKING RANGES Heavy Duty Crane Boom



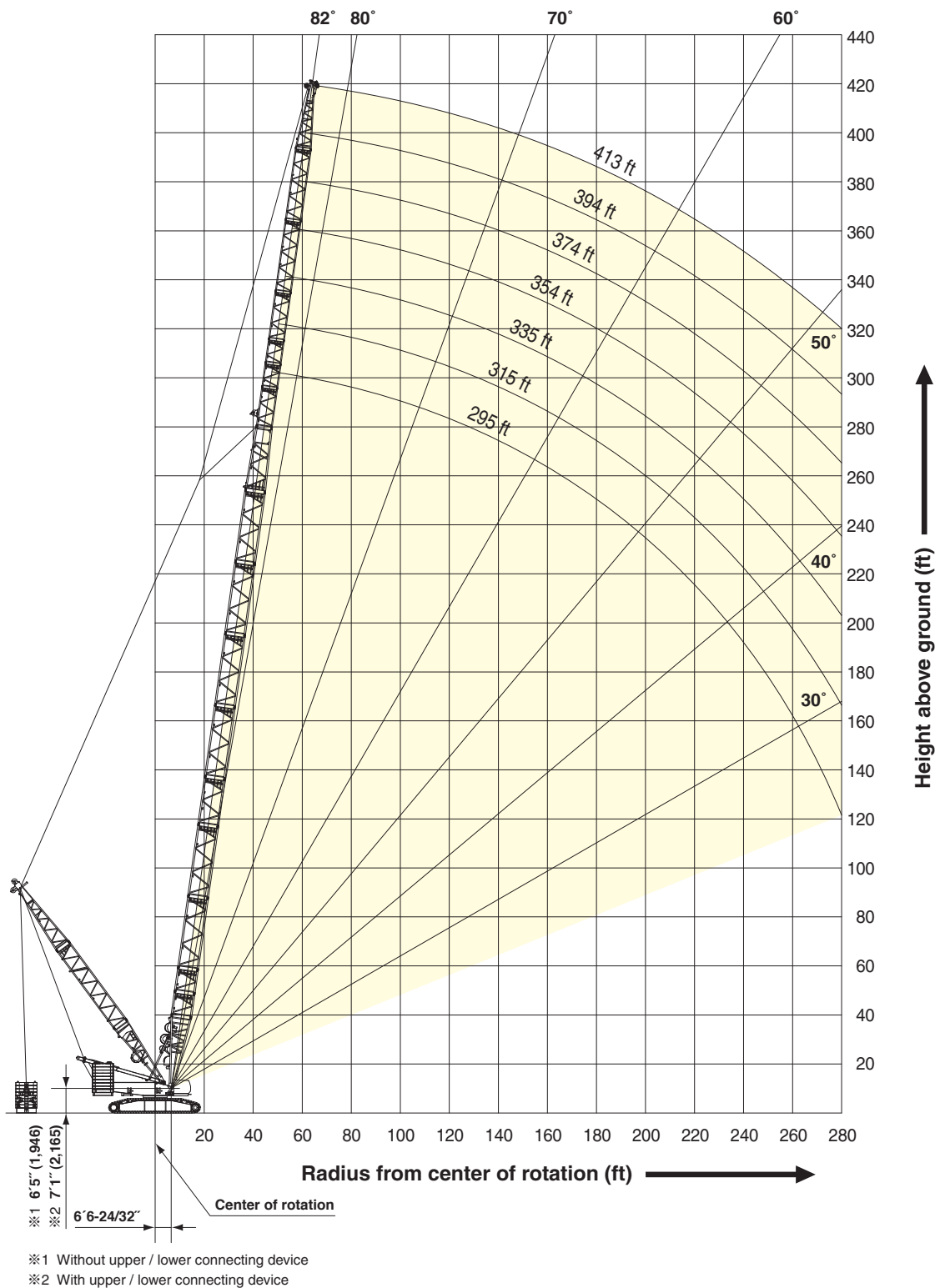
SUPER HEAVY LIFT

WORKING RANGES

Luffing Boom



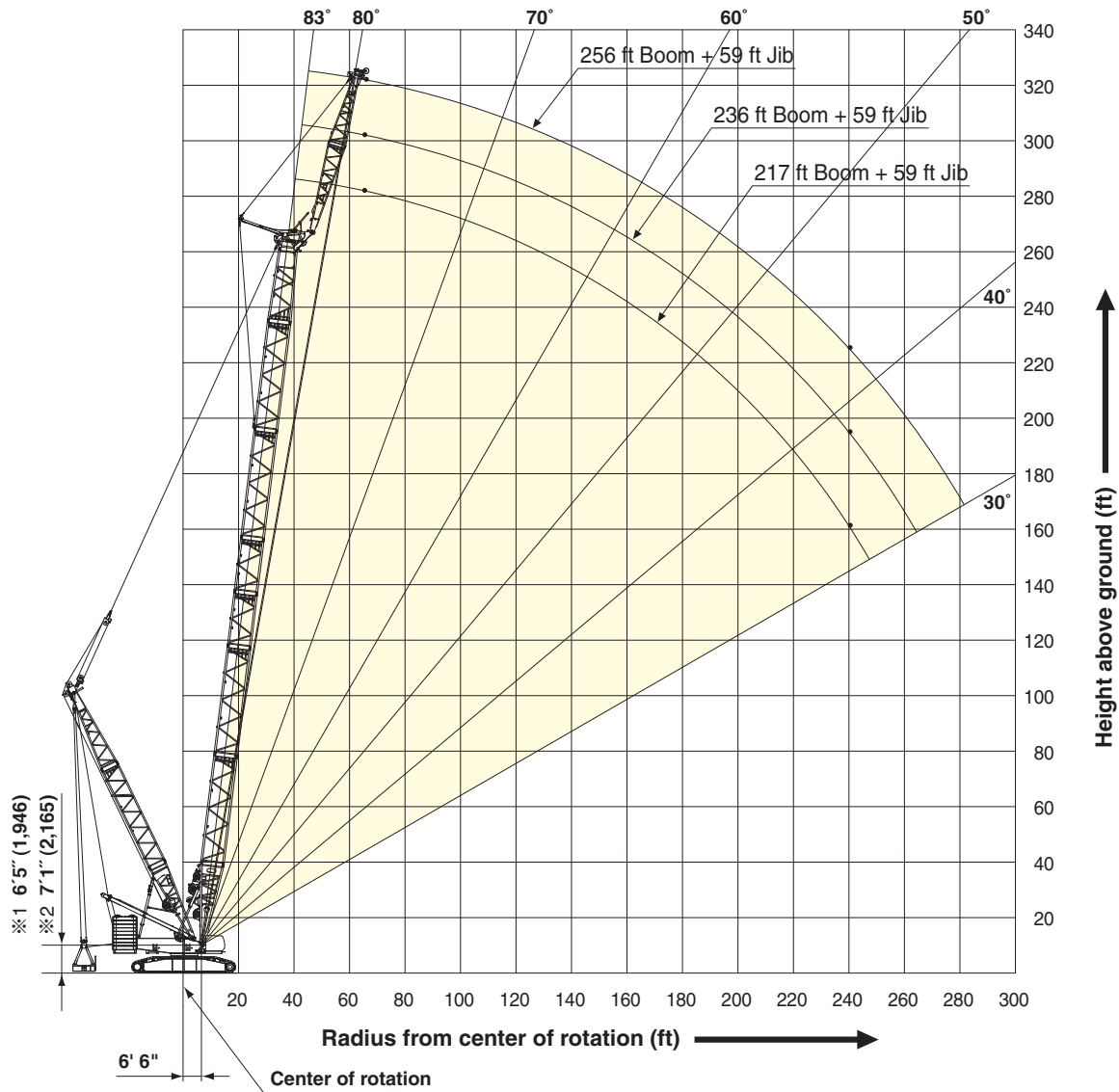
Long Boom



SUPER HEAVY LIFT

WORKING RANGES

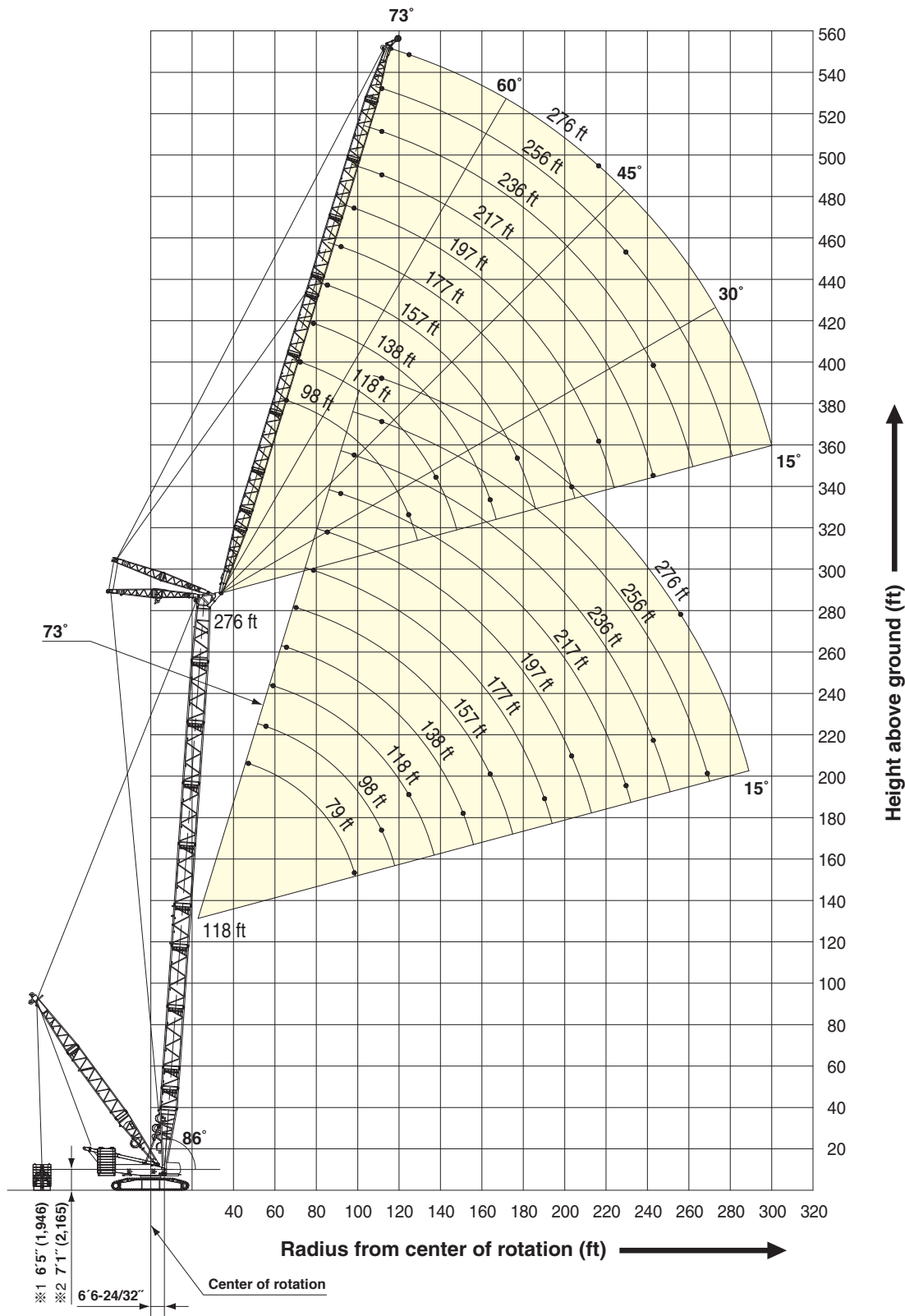
Heavy Fixed Jib (Type B2)



- ※1 Without upper / lower connecting device
- ※2 With upper / lower connecting device

Luffing Jib

Boom Angle: 86°



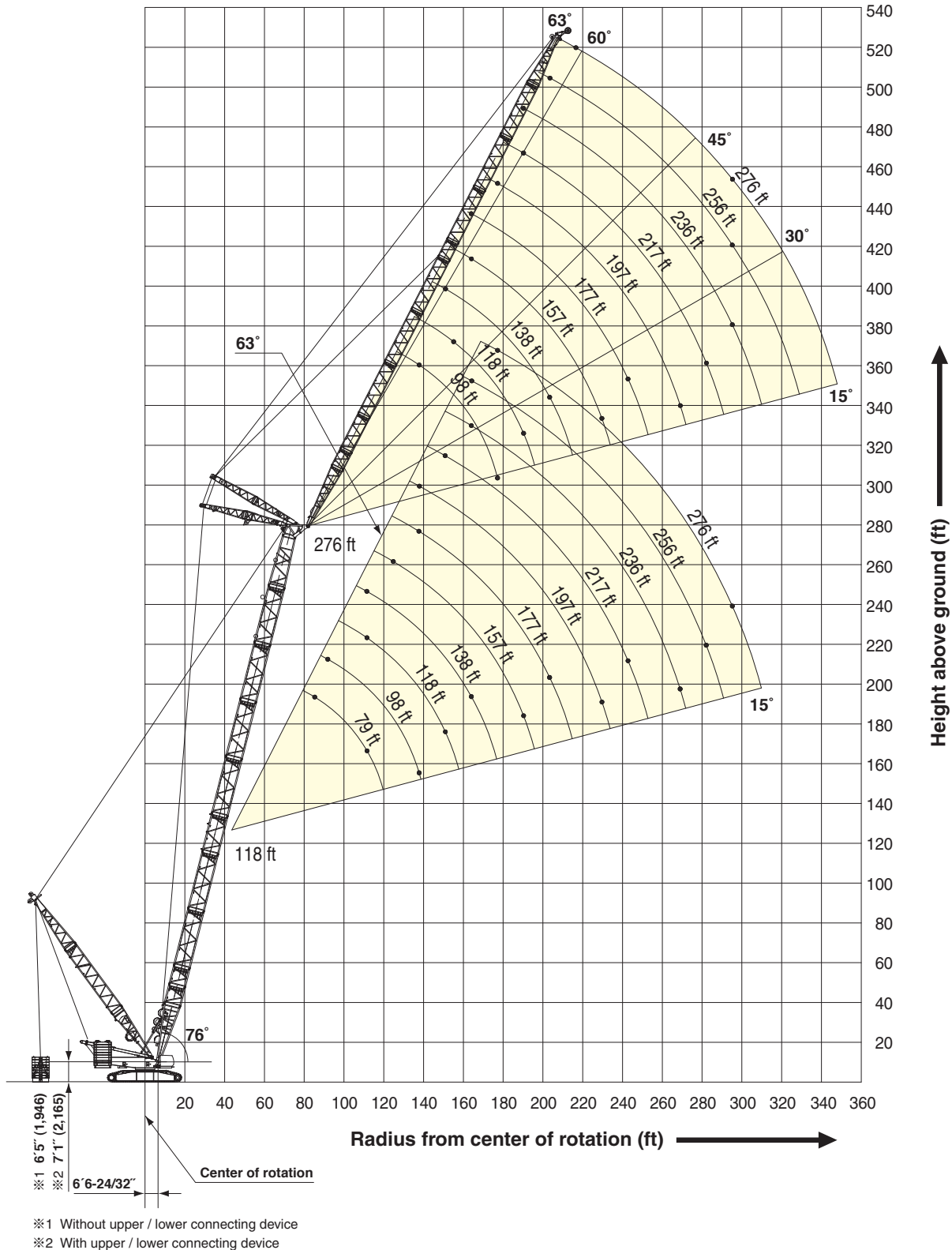
※1 Without upper / lower connecting device
 ※2 With upper / lower connecting device

SUPER HEAVY LIFT

WORKING RANGES

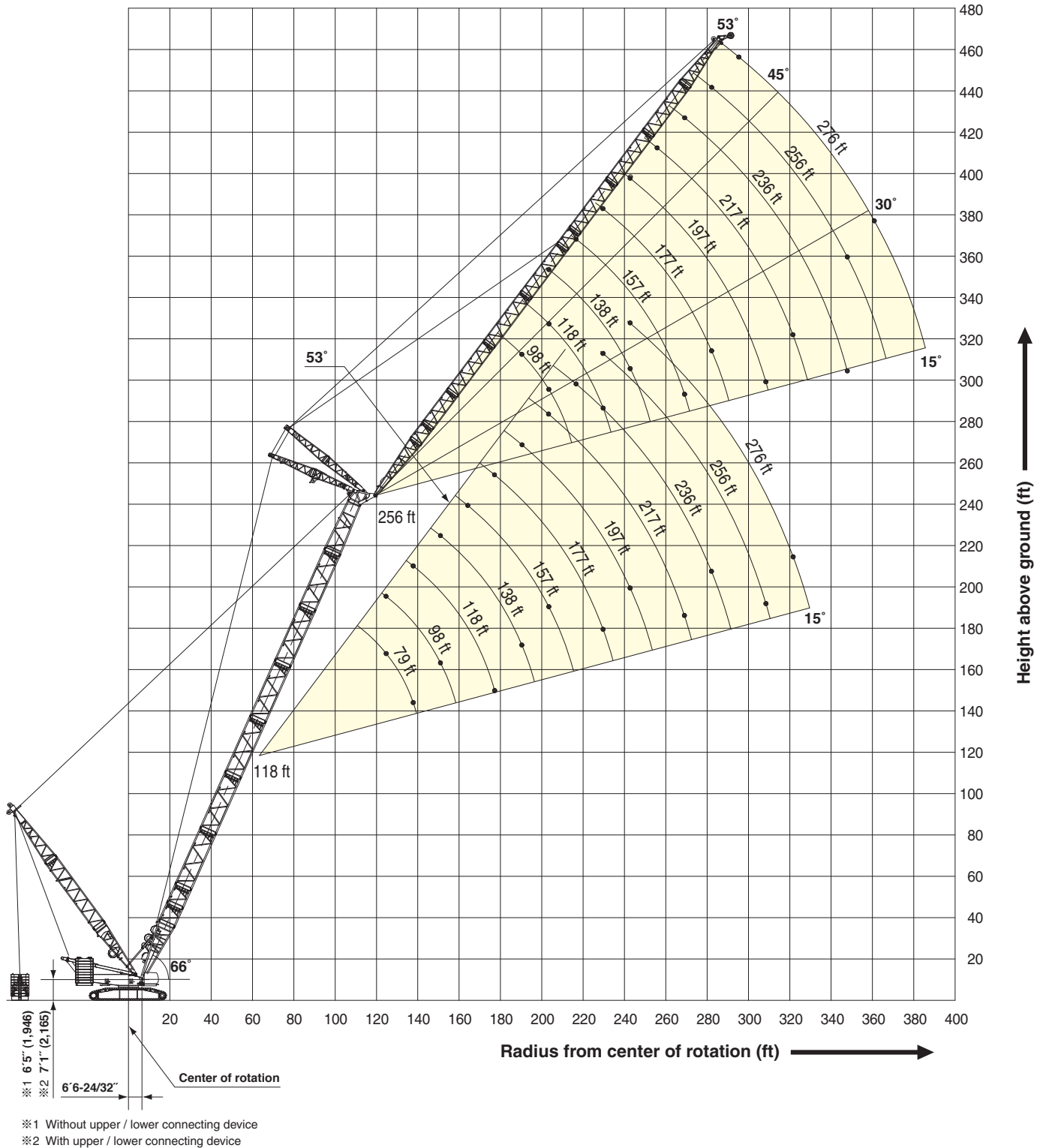
Luffing Jib

Boom Angle: 76°



Luffing Jib

Boom Angle: 66°



SUPER HEAVY LIFT



LIFTING CAPACITIES

Heavy Duty Crane Boom Lifting Capacities

Counterweight: 440,900 lbs, Carbody weight: 110,200 lbs, Palette weight: 551,100 lbs

118 ft (36 m) Boom			138 ft (42 m) Boom			157 ft (48 m) Boom											
Load Radius (ft)	Boom Angle (deg.)	360° Rated Load (lbs)			Load Radius (ft)	Boom Angle (deg.)	360° Rated Load (lbs)			Load Radius (ft)	Boom Angle (deg.)	360° Rated Load (lbs)					
		Palette Weight Radius					Palette Weight Radius					Palette Weight Radius					
		36.0ft(11m)	42.5ft(13m)	52.5ft(16m)			36.0ft(11m)	42.5ft(13m)	52.5ft(16m)			36.0ft(11m)	42.5ft(13m)	52.5ft(16m)			
27.2	82.0	1,212,500*	1,212,500*	1,212,500*	30.1	82.0	1,207,800*	1,207,200*	1,206,500*	32.8	82.0	992,000*	992,000*	992,000*			
28.0	81.6	1,211,700*	1,211,600*	1,211,500*	32.0	81.2	1,175,700*	1,207,200*	1,206,500*	34.0	81.5	988,100*	992,000*	992,000*			
30.0	80.7	1,203,400*	1,209,300*	1,209,100*	34.0	80.3	1,127,000*	1,178,200*	1,197,400*	36.0	80.8	981,500*	992,000*	992,000*			
32.0	79.7	1,175,300*	1,206,800*	1,206,800*	36.0	79.5	1,069,400*	1,129,400*	1,182,100	38.0	80.1	974,900*	992,000*	992,000*			
34.0	78.7	1,129,600*	1,177,500*	1,196,900*	38.0	78.6	1,011,800*	1,080,700*	1,166,800*	40.0	79.3	957,200*	983,000*	991,900*			
36.0	77.7	1,072,000*	1,129,900*	1,181,700	40.0	77.8	959,200*	1,033,200*	1,140,400	42.0	78.6	915,400*	954,300*	991,700			
38.0	76.7	1,014,300*	1,082,400*	1,166,600*	42.0	76.9	917,300*	988,100*	1,090,100*	44.0	77.8	873,500*	925,600*	991,400*			
40.0	75.7	961,600*	1,035,600*	1,140,400	44.0	76.0	875,300*	943,100*	1,039,700	46.0	77.1	832,000*	896,700*	989,800			
42.0	74.7	919,700*	990,600*	1,090,100*	46.0	75.2	833,700*	898,500*	989,800*	48.0	76.3	800,200*	862,500*	952,100*			
44.0	73.6	877,800*	945,600*	1,039,700	48.0	74.3	802,000*	864,300*	952,100	50.0	75.6	768,400*	828,300*	914,300			
46.0	72.6	836,200*	900,900*	989,800*	50.0	73.4	770,200*	830,100*	914,300*	55.0	73.7	697,500*	752,100*	830,400*			
48.0	71.6	804,300*	866,700*	952,100	55.0	71.2	699,200*	753,800*	830,400	60.0	71.7	637,300*	687,500*	759,800			
50.0	70.5	772,500*	832,500*	914,300*	60.0	69.0	639,000*	689,200*	759,800*	65.0	69.8	587,100*	633,400*	701,000*			
55.0	67.9	701,400*	756,200*	830,400	65.0	66.7	588,600*	635,200*	701,000	70.0	67.8	544,500*	587,700*	651,600			
60.0	65.2	641,200*	691,400*	759,800*	70.0	64.4	546,000*	589,300*	651,600*	75.0	65.8	506,800*	547,200*	607,500*			
65.0	62.5	590,800*	637,200*	701,000	75.0	62.0	508,400*	548,800*	608,000	80.0	63.8	472,800*	511,400*	567,800*			
70.0	59.6	548,200*	591,400*	651,600*	80.0	59.6	474,300*	512,900*	569,200*	85.0	61.7	441,200*	479,600*	532,700*			
75.0	56.7	510,000*	551,000*	608,000	85.0	57.1	441,500*	481,100*	534,500	90.0	59.6	412,600*	451,000*	502,300*			
80.0	53.7	474,800*	515,100*	567,000*	90.0	54.6	412,900*	451,800*	503,900*	95.0	57.4	386,800*	423,900*	474,000*			
85.0	50.5	441,600*	483,300*	523,300	95.0	51.9	387,100*	424,300*	475,100*	100.0	55.2	363,500*	398,600*	447,200*			
90.0	47.2	412,900*	452,500*	479,000*	100.0	49.1	363,900*	399,100*	447,000*	110.0	50.5	324,000*	355,800*	399,700*			
95.0	43.7	387,100*	421,500*	437,500*	110.0	43.2	324,400*	356,200*	387,900*	120.0	45.5	291,400*	320,300*	360,400*			
100.0	39.9	362,600*	391,100*	398,700*	120.0	36.4	291,700*	319,100*	330,100*	130.0	40.0	263,900*	290,700*	322,100*			
110.0	31.0	312,700*	336,200*	326,400*	127.9	30.1	267,100*	287,400*	286,300*	140.0	33.7	241,200*	265,100*	279,100*			
110.8	30.2	308,400*	331,500*	320,100*						145.0	30.1	230,100*	252,200*	257,200*			
reeves			44(2x22)			reeves			44(2x22)			reeves			36(2x18)		
177 ft (54 m) Boom			197 ft (60 m) Boom			217 ft (66 m) Boom											
Load Radius (ft)	Boom Angle (deg.)	360° Rated Load (lbs)			Load Radius (ft)	Boom Angle (deg.)	360° Rated Load (lbs)			Load Radius (ft)	Boom Angle (deg.)	360° Rated Load (lbs)					
		Palette Weight Radius					Palette Weight Radius					Palette Weight Radius					
		36.0ft(11m)	42.5ft(13m)	52.5ft(16m)			36.0ft(11m)	42.5ft(13m)	52.5ft(16m)			36.0ft(11m)	42.5ft(13m)	52.5ft(16m)			
35.7	81.9	815,600*	815,600*	815,600*	38.3	82.0	740,700*	740,700*	740,700*	41.0	82.0	617,200*	617,200*	617,200*			
36.0	81.8	815,600*	815,600*	815,600*	40.0	81.5	740,700*	740,700*	740,700*	42.0	81.7	617,200*	617,200*	617,200*			
38.0	81.2	815,600*	815,600*	815,600*	42.0	80.9	740,700*	740,700*	740,700*	44.0	81.2	617,200*	617,200*	617,200*			
40.0	80.5	815,600*	815,600*	815,600*	44.0	80.3	740,700*	740,700*	740,700*	46.0	80.7	617,200*	617,200*	617,200*			
42.0	79.9	815,600*	815,600*	815,600*	46.0	79.7	740,500*	740,700*	740,700*	48.0	80.1	617,200*	617,200*	617,200*			
44.0	79.2	815,600*	815,600*	815,600*	48.0	79.1	735,300*	740,700*	740,700*	50.0	79.6	617,200*	617,200*	617,200*			
46.0	78.5	814,700*	815,300*	815,600*	50.0	78.5	730,200*	740,700*	740,700*	55.0	78.2	617,200*	617,200*	617,200*			
48.0	77.9	787,400*	805,400*	815,600*	55.0	77.0	692,500*	722,400*	740,700*	60.0	76.9	610,900*	617,200*	617,200*			
50.0	77.2	760,000*	795,400*	815,600*	60.0	75.5	632,400*	682,600*	733,400*	65.0	75.5	577,300*	617,200*	617,200*			
55.0	75.5	694,700*	749,400*	798,500*	65.0	74.0	582,000*	628,500*	695,000*	70.0	74.1	536,800*	579,400*	617,200*			
60.0	73.8	634,600*	684,800*	759,400*	70.0	72.5	539,600*	582,800*	647,200*	75.0	72.7	499,200*	539,500*	596,600*			
65.0	72.1	584,200*	630,700*	699,800*	75.0	70.9	501,900*	542,400*	602,600*	80.0	71.3	465,800*	503,700*	560,300*			
70.0	70.4	541,800*	585,000*	649,400*	80.0	69.4	468,500*	506,500*	563,000*	85.0	69.9	436,300*	472,100*	525,200*			
75.0	68.7	504,100*	544,600*	604,800*	85.0	67.8	439,100*	474,800*	528,100*	90.0	68.5	408,400*	444,600*	494,800*			
80.0	66.9	470,500*	508,700*	565,200*	90.0	66.2	410,500*	447,300*	497,700*	95.0	67.0	382,700*	418,600*	467,300*			
85.0	65.1	440,500*	477,000*	530,300*	95.0	64.6	384,500*	420,900*	470,100*	100.0	65.6	359,200*	393,900*	441,600*			
90.0	63.3	411,800*	449,500*	499,900*	100.0	62.9	361,000*	395,900*	444,100*	110.0	62.6	319,400*	350,800*	394,200*			
95.0	61.5	385,900*	422,800*	472,100*	110.0	59.6	321,400*	352,900*	396,400*	120.0	59.6	286,600*	315,400*	355,100*			
100.0	59.6	362,600*	397,500*	445,900*	120.0	56.1	288,600*	317,400*	357,300*	130.0	56.4	259,100*	285,600*	322,100*			
110.0	55.7	322,900*	354,700*	398,400*	130.0	52.4	261,100*	287,600*	324,400*	140.0	53.1	236,300*	260,900*	294,900*			
120.0	51.6	290,300*	319,200*	359,200*	140.0	48.6	238,400*	262,900*	296,900*	150.0	49.7	216,200*	239,100*	270,700*			
130.0	47.2	262,900*	289,500*	326,300*	150.0	44.5	218,400*	241,100*	272,800*	160.0	46.0	198,400*	219,900*	249,400*			
140.0	42.6	240,100*	264,900*	298,900*	160.0	40.1	200,600*	221,900*	251,400*	170.0	42.2	183,000*	203,100*	230,800*			
150.0	37.4	219,900*	243,000*	269,600*	170.0	35.2	185,000*	205,100*	231,900*	180.0	37.9	169,600*	188,500*	214,800*			
160.0	31.4	202,000*	223,400*	237,500*	179.1	30.1	172,300*	191,500*	207,000*	190.0	33.3	157,400*	175,400*	197,200*			
162.0	30.1	198,600*	219,700*	230,300*						196.1	30.1	150,300*	167,700*	185,600*			
reeves			28(2x14)			reeves			24(2x12)			reeves			20(2x10)		

Note: Loads enclosed in bold lines in the table require double-drum specifications.
Lifting capacities may vary depending on hook used or with / without auxiliary sheave.
Please refer rated chart in operator's cabin.



HYDRAULIC CRAWLER CRANE

SL6000G

Heavy Duty Crane Boom Lifting Capacities

Counterweight: 440,900 lbs, Carbody weight: 110,200 lbs, Palette weight: 551,100 lbs

236 ft (72 m) Boom			256 ft (78 m) Boom			276 ft (84 m) Boom								
Load Radius (ft)	Boom Angle (deg.)	360° Rated Load (lbs)			Load Radius (ft)	Boom Angle (deg.)	360° Rated Load (lbs)			Load Radius (ft)	Boom Angle (deg.)	360° Rated Load (lbs)		
		Palette Weight Radius					Palette Weight Radius					Palette Weight Radius		
		36.0ft(11m)	42.5ft(13m)	52.5ft(16m)			36.0ft(11m)	42.5ft(13m)	52.5ft(16m)			36.0ft(11m)	42.5ft(13m)	52.5ft(16m)
43.9	82.0	617,200 *	617,200 *	617,200 *	46.5	82.0	485,000 *	485,000 *	485,000 *	49.2	82.0	440,900 *	440,900 *	440,900 *
44.0	81.9	617,200 *	617,200 *	617,200 *	48.0	81.7	485,000 *	485,000 *	485,000 *	50.0	81.8	440,900 *	440,900 *	440,900 *
46.0	81.4	617,200 *	617,200 *	617,200 *	50.0	81.2	485,000 *	485,000 *	485,000 *	55.0	80.8	440,900 *	440,900 *	440,900 *
48.0	80.9	617,200 *	617,200 *	617,200 *	55.0	80.1	485,000 *	485,000 *	485,000 *	60.0	79.7	440,900 *	440,900 *	440,900 *
50.0	80.5	617,200 *	617,200 *	617,200 *	60.0	78.9	485,000 *	485,000 *	485,000 *	65.0	78.7	440,900 *	440,900 *	440,900 *
55.0	79.2	617,200 *	617,200 *	617,200 *	65.0	77.8	485,000 *	485,000 *	485,000 *	70.0	77.6	440,900 *	440,900 *	440,900 *
60.0	78.0	610,500 *	617,100 *	617,200 *	70.0	76.6	485,000 *	485,000 *	485,000 *	75.0	76.5	440,900 *	440,900 *	440,900 *
65.0	76.7	575,100 *	616,600 *	617,200 *	75.0	75.5	477,700 *	485,000 *	485,000 *	80.0	75.4	438,200 *	440,900 *	440,900 *
70.0	75.5	534,500 *	577,700 *	617,200 *	80.0	74.3	460,600 *	481,100 *	485,000 *	85.0	74.4	427,600 *	440,900 *	440,900 *
75.0	74.2	496,900 *	537,300 *	595,500 *	85.0	73.1	431,200 *	466,000 *	485,000 *	90.0	73.3	402,000 *	430,900 *	440,900 *
80.0	72.9	463,400 *	501,400 *	557,900 *	90.0	71.9	404,300 *	439,500 *	480,400 *	95.0	72.2	376,700 *	411,600 *	440,900 *
85.0	71.7	434,000 *	469,700 *	523,000 *	95.0	70.8	379,000 *	414,000 *	462,200 *	100.0	71.1	353,100 *	387,500 *	433,400 *
90.0	70.4	406,500 *	442,200 *	492,600 *	100.0	69.6	355,400 *	390,000 *	436,700 *	110.0	68.9	313,300 *	344,400 *	387,400 *
95.0	69.1	380,900 *	416,500 *	465,000 *	110.0	67.1	315,500 *	346,800 *	390,000 *	120.0	66.6	280,400 *	308,800 *	348,100 *
100.0	67.8	357,500 *	392,200 *	439,300 *	120.0	64.7	282,600 *	311,200 *	350,700 *	130.0	64.3	252,700 *	278,800 *	315,100 *
110.0	65.1	317,700 *	349,000 *	392,200 *	130.0	62.1	255,100 *	281,400 *	317,700 *	140.0	61.9	229,800 *	254,100 *	287,700 *
120.0	62.4	284,800 *	313,400 *	352,900 *	140.0	59.5	232,200 *	256,600 *	290,300 *	150.0	59.5	209,500 *	232,300 *	263,500 *
130.0	59.6	257,300 *	283,600 *	319,900 *	150.0	56.9	212,000 *	234,700 *	266,100 *	160.0	57.1	191,800 *	213,100 *	242,400 *
140.0	56.7	234,600 *	258,900 *	292,700 *	160.0	54.1	194,200 *	215,500 *	244,900 *	170.0	54.5	176,400 *	196,300 *	223,700 *
150.0	53.7	214,400 *	237,100 *	268,500 *	170.0	51.3	178,800 *	198,700 *	226,400 *	180.0	51.9	163,000 *	181,700 *	207,800 *
160.0	50.5	196,600 *	217,900 *	247,300 *	180.0	48.3	165,400 *	184,300 *	210,300 *	190.0	49.2	150,900 *	168,600 *	193,200 *
170.0	47.3	181,000 *	201,100 *	228,800 *	190.0	45.2	153,300 *	171,200 *	195,800 *	200.0	46.3	139,900 *	156,800 *	180,100 *
180.0	43.8	167,800 *	186,600 *	212,700 *	200.0	41.9	142,300 *	159,300 *	182,700 *	210.0	43.3	130,000 *	146,100 *	168,100 *
190.0	40.1	155,700 *	173,500 *	198,200 *	210.0	38.3	132,400 *	148,500 *	170,800 *	220.0	40.2	121,300 *	136,500 *	157,700 *
200.0	36.1	144,700 *	161,600 *	185,100 *	220.0	34.5	123,700 *	138,900 *	160,200 *	230.0	36.7	113,100 *	127,700 *	148,100 *
210.0	31.6	134,600 *	150,700 *	173,200 *	230.0	30.2	115,300 *	130,100 *	149,700 *	240.0	33.0	105,600 *	119,700 *	139,200 *
213.2	30.0	131,600 *	147,400 *	166,800 *	230.3	30.0	115,000 *	129,800 *	149,400 *	247.3	30.0	100,500 *	114,100 *	132,900 *
reeves		20(2x10)			reeves		16(2x8)			reeves		16(2x8)		

Note: Loads enclosed in bold lines in the table require double-drum specifications.
 Lifting capacities may vary depending on hook used or with / without auxiliary sheave.
 Please refer rated chart in operator's cabin.



LIFTING CAPACITIES

Long Boom Lifting Capacities

Counterweight: 440,900 lbs, Carbody weight: 110,200 lbs, Palette weight: 551,100 lbs x 36 ft to 52.5 ft

295 ft (90 m) Boom			315 ft (96 m) Boom			335 ft (102 m) Boom			354 ft (108 m) Boom		
Load Radius (ft)	Boom Angle (deg.)	360° Rated Load (lbs)	Load Radius (ft)	Boom Angle (deg.)	360° Rated Load (lbs)	Load Radius (ft)	Boom Angle (deg.)	360° Rated Load (lbs)	Load Radius (ft)	Boom Angle (deg.)	360° Rated Load (lbs)
49.2	82.0	216,000 *	51.8	82.0	216,000 *	54.7	82.0	185,100 *	57.4	82.0	185,100 *
50.0	81.8	216,000 *	55.0	81.4	216,000 *	55.0	81.9	185,100 *	60.0	81.6	185,100 *
55.0	80.8	216,000 *	60.0	80.5	216,000 *	60.0	81.1	185,100 *	65.0	80.7	185,100 *
60.0	79.8	216,000 *	65.0	79.6	216,000 *	65.0	80.2	185,100 *	70.0	79.9	185,100 *
65.0	78.9	216,000 *	70.0	78.6	216,000 *	70.0	79.3	185,100 *	75.0	79.1	185,100 *
70.0	77.9	216,000 *	75.0	77.7	216,000 *	75.0	78.4	185,100 *	80.0	78.3	185,100 *
75.0	76.9	216,000 *	80.0	76.8	215,900 *	80.0	77.6	185,100 *	85.0	77.4	184,900 *
80.0	75.9	216,000 *	85.0	75.8	215,400 *	85.0	76.7	185,100 *	90.0	76.6	178,900 *
85.0	74.9	216,000 *	90.0	74.9	208,100 *	90.0	75.8	185,100 *	95.0	75.8	172,900 *
90.0	73.9	216,000 *	95.0	73.9	200,900 *	95.0	74.9	185,100 *	100.0	74.9	167,000 *
95.0	72.8	216,000 *	100.0	73.0	193,600 *	100.0	74.0	185,100 *	110.0	73.3	155,800 *
100.0	71.8	215,100 *	110.0	71.1	178,200 *	110.0	72.2	185,100 *	120.0	71.6	144,100 *
110.0	69.8	206,200 *	120.0	69.1	161,800 *	120.0	70.4	176,300 *	130.0	69.8	133,600 *
120.0	67.7	194,600 *	130.0	67.2	145,200 *	130.0	68.6	165,900 *	140.0	68.1	124,600 *
130.0	65.6	184,900 *	140.0	65.2	129,600 *	140.0	66.7	155,100 *	150.0	66.3	117,400 *
140.0	63.4	172,800 *	150.0	63.2	115,500 *	150.0	64.9	145,400 *	160.0	64.6	111,500 *
150.0	61.2	160,900 *	160.0	61.1	104,200 *	160.0	63.0	136,900 *	170.0	62.8	105,300 *
160.0	59.0	150,400 *	170.0	59.0	96,900 *	170.0	61.0	129,200 *	180.0	60.9	100,200 *
170.0	56.7	142,000 *	180.0	56.8	91,600 *	180.0	59.0	122,100 *	190.0	59.0	95,300 *
180.0	54.3	134,200 *	190.0	54.6	86,900 *	190.0	57.0	115,100 *	200.0	57.1	90,600 *
190.0	51.9	126,900 *	200.0	52.4	82,800 *	200.0	54.9	108,800 *	210.0	55.2	85,700 *
200.0	49.3	120,500 *	210.0	50.0	79,300 *	210.0	52.8	103,800 *	220.0	53.2	81,700 *
210.0	46.7	115,500 *	220.0	47.6	76,800 *	220.0	50.6	100,200 *	230.0	51.1	78,200 *
220.0	44.0	111,800 *	230.0	45.1	74,600 *	230.0	48.4	96,600 *	240.0	49.0	75,200 *
230.0	41.1	108,200 *	240.0	42.4	72,700 *	240.0	46.0	93,200 *	250.0	46.8	72,500 *
240.0	38.0	104,900 *	250.0	39.6	70,900 *	250.0	43.6	90,100 *	260.0	44.6	69,500 *
250.0	34.7	101,800 *	260.0	36.7	69,500 *	260.0	41.0	86,600 *	270.0	42.2	67,600 *
260.0	31.1	98,400 *	270.0	33.5	68,400 *	270.0	38.3	84,400 *	280.0	39.7	66,000 *
262.7	30.1	97,400 *	279.8	30.1	67,400 *	280.0	35.4	82,800 *	290.0	37.1	64,400 *
						290.0	32.4	81,100 *	300.0	34.3	63,000 *
						296.9	30.1	79,800 *	310.0	31.3	62,000 *
									313.9	30.1	61,700 *
reeves		7	reeves		7	reeves		6	reeves		6

Note: Loads enclosed in bold lines in the table require double-drum specifications.
Lifting capacities may vary depending on hook used or with / without auxiliary sheave.
Please refer rated chart in operator's cabin.



SL6000G

Long Boom Lifting Capacities

Counterweight: 440,900 lbs, Carbody weight: 110,200 lbs, Palette weight: 551,100 lbs x 36 ft to 52.5 ft

374 ft (114 m) Boom			394 ft (120 m) Boom			413 ft (126 m) Boom					
Load Radius (ft)	Boom Angle (deg.)	360° Rated Load (lbs)	Load Radius (ft)	Boom Angle (deg.)	360° Rated Load (lbs)	Load Radius (ft)	Boom Angle (deg.)	360° Rated Load (lbs)			
60.0	82.0	176,300 *	62.9	82.0	154,300 *	65.6	82.0	132,200 *			
65.0	81.2	175,100 *	65.0	81.7	154,300 *	70.0	81.4	131,200 *			
70.0	80.5	174,000 *	70.0	80.9	154,300 *	75.0	80.7	129,900 *			
75.0	79.7	172,800 *	75.0	80.2	153,600 *	80.0	80.0	128,600 *			
80.0	78.9	171,600 *	80.0	79.5	152,500 *	85.0	79.3	127,400 *			
85.0	78.1	170,400 *	85.0	78.7	151,500 *	90.0	78.6	126,100 *			
90.0	77.3	169,300 *	90.0	78.0	150,300 *	95.0	77.8	122,200 *			
95.0	76.5	168,100 *	95.0	77.2	149,100 *	100.0	77.1	117,100 *			
100.0	75.7	166,900 *	100.0	76.5	147,600 *	110.0	75.7	108,100 *			
110.0	74.2	160,700 *	110.0	75.0	140,400 *	120.0	74.3	99,200 *			
120.0	72.6	151,000 *	120.0	73.5	131,100 *	130.0	72.8	92,900 *			
130.0	70.9	141,500 *	130.0	71.9	122,500 *	140.0	71.4	88,600 *			
140.0	69.3	133,200 *	140.0	70.4	114,400 *	150.0	69.9	84,500 *			
150.0	67.7	124,500 *	150.0	68.8	107,900 *	160.0	68.4	80,500 *			
160.0	66.0	116,400 *	160.0	67.3	102,900 *	170.0	66.9	76,700 *			
170.0	64.3	111,200 *	170.0	65.7	98,300 *	180.0	65.4	73,300 *			
180.0	62.6	106,700 *	180.0	64.1	94,600 *	190.0	63.9	70,200 *			
190.0	60.8	102,400 *	190.0	62.4	91,000 *	200.0	62.3	67,600 *			
200.0	59.1	98,100 *	200.0	60.8	87,600 *	210.0	60.7	65,200 *			
210.0	57.3	94,100 *	210.0	59.1	84,600 *	220.0	59.1	63,200 *			
220.0	55.4	91,100 *	220.0	57.4	82,100 *	230.0	57.5	61,400 *			
230.0	53.5	88,200 *	230.0	55.6	79,800 *	240.0	55.8	59,800 *			
240.0	51.6	85,400 *	240.0	53.8	77,600 *	250.0	54.1	58,300 *			
250.0	49.6	82,700 *	250.0	52.0	75,500 *	260.0	52.4	57,100 *			
260.0	47.6	80,200 *	260.0	50.1	73,800 *	270.0	50.6	55,900 *			
270.0	45.4	78,300 *	270.0	48.2	72,200 *	280.0	48.8	54,900 *			
280.0	43.2	76,700 *	280.0	46.2	70,900 *	290.0	46.9	54,000 *			
290.0	40.9	75,400 *	290.0	44.2	69,700 *	300.0	45.0	52,900 *			
300.0	38.5	74,200 *	300.0	42.0	68,700 *	310.0	43.0	52,100 *			
310.0	36.0	73,100 *	310.0	39.8	67,700 *	320.0	40.9	51,200 *			
320.0	33.3	70,800 *	320.0	37.4	66,900 *	330.0	38.7	50,200 *			
330.0	30.4	67,400 *	330.0	35.0	65,700 *	340.0	36.4	49,200 *			
331.0	30.1	67,000 *	340.0	32.3	62,500 *	350.0	34.0	48,700 *			
			348.0	30.1	59,900 *	360.0	31.4	48,200 *			
						365.1	30.0	48,000 *			
reeves		6	reeves		5	reeves		5			

Note: Loads enclosed in bold lines in the table require double-drum specifications.
 Lifting capacities may vary depending on hook used or with / without auxiliary sheave.
 Please refer rated chart in operator's cabin.



LIFTING CAPACITIES

Heavy Fixed Jib (Type B2) Lifting Capacities

Counterweight: 440,900 lbs, Carbody weight: 110,200 lbs, HL mast point radius: 36.0 ft

217' Boom			236' Boom			256' Boom					
Load Radius (ft)	Boom Angle (deg.)	360° Rated Load (lbs)	Load Radius (ft)	Boom Angle (deg.)	360° Rated Load (lbs)	Load Radius (ft)	Boom Angle (deg.)	360° Rated Load (lbs)			
65.0		264,600 *	65.0		264,600 *	65.7		264,600 *			
70.0		261,900 *	70.0		260,100 *	70.0		259,300 *			
75.0		244,000 *	75.0		240,100 *	75.0		234,600 *			
80.0		222,700 *	80.0		220,700 *	80.0		211,400 *			
85.0		203,900 *	85.0		201,900 *	85.0		195,500 *			
90.0		188,100 *	90.0		186,100 *	90.0		181,700 *			
95.0		173,700 *	95.0		171,500 *	95.0		168,700 *			
100.0		160,700 *	100.0		158,500 *	100.0		156,300 *			
110.0		138,900 *	110.0		136,700 *	110.0		134,300 *			
120.0		121,000 *	120.0		118,600 *	120.0		116,000 *			
130.0		106,000 *	130.0		103,600 *	130.0		100,700 *			
140.0		93,300 *	140.0		90,600 *	140.0		88,000 *			
150.0		82,200 *	150.0		79,600 *	150.0		76,700 *			
160.0		72,800 *	160.0		70,100 *	160.0		67,500 *			
170.0		64,400 *	170.0		61,700 *	170.0		58,900 *			
180.0		57,100 *	180.0		54,500 *	180.0		51,400 *			
190.0		50,500 *	190.0		47,800 *	190.0		45,000 *			
200.0		44,800 *	200.0		41,900 *	200.0		39,000 *			
210.0		39,500 *	210.0		36,600 *	210.0		33,700 *			
220.0		34,800 *	220.0		32,000 *	220.0		28,900 *			
230.0		30,400 *	230.0		27,600 *	230.0		24,500 *			
240.0		26,700 *	240.0		23,800 *	240.0		20,700 *			

Note: Lifting capacities may vary depending on hook used or with / without auxiliary sheave. Please refer rated chart in operator's cabin.



LIFTING CAPACITIES

Luffing Boom Lifting Capacities

Counterweight: 440,900 lbs, Carbody weight: 110,200 lbs

236 ft (72 m) Boom			256 ft (78 m) Boom			276 ft (84 m) Boom											
Load Radius (ft)	Boom Angle (deg.)	360° Rated Load (lbs)			Load Radius (ft)	Boom Angle (deg.)	360° Rated Load (lbs)			Load Radius (ft)	Boom Angle (deg.)	360° Rated Load (lbs)					
		Palette Weight Radius					Palette Weight Radius					Palette Weight Radius					
		36.0ft(11m)	42.5ft(13m)	52.5ft(16m)			36.0ft(11m)	42.5ft(13m)	52.5ft(16m)			36.0ft(11m)	42.5ft(13m)	52.5ft(16m)			
44.2	82.0	555,500 *	555,500 *	555,500 *	46.9	82.0	470,600 *	470,600 *	470,600 *	49.8	82.0	402,900 *	402,900 *	402,900 *			
46.0	81.6	555,500 *	555,500 *	555,500 *	48.0	81.8	470,600 *	470,600 *	470,600 *	50.0	82.0	402,900 *	402,900 *	402,900 *			
48.0	81.1	555,500 *	555,500 *	555,500 *	50.0	81.3	470,600 *	470,600 *	470,600 *	55.0	80.9	402,900 *	402,900 *	402,900 *			
50.0	80.6	555,500 *	555,500 *	555,500 *	55.0	80.2	470,600 *	470,600 *	470,600 *	60.0	79.8	402,900 *	402,900 *	402,900 *			
55.0	79.4	555,500 *	555,500 *	555,500 *	60.0	79.1	470,600 *	470,600 *	470,600 *	65.0	78.8	402,900 *	402,900 *	402,900 *			
60.0	78.1	554,300 *	555,500 *	555,500 *	65.0	77.9	470,600 *	470,600 *	470,600 *	70.0	77.7	402,900 *	402,900 *	402,900 *			
65.0	76.9	547,700 *	555,500 *	555,500 *	70.0	76.8	470,600 *	470,600 *	470,600 *	75.0	76.6	402,900 *	402,900 *	402,900 *			
70.0	75.6	511,600 *	542,300 *	555,500 *	75.0	75.6	458,600 *	470,600 *	470,600 *	80.0	75.6	402,100 *	402,900 *	402,900 *			
75.0	74.4	472,500 *	514,800 *	550,900 *	80.0	74.4	434,500 *	464,800 *	470,600 *	85.0	74.5	398,700 *	402,900 *	402,900 *			
80.0	73.1	435,900 *	478,400 *	535,400 *	85.0	73.3	402,500 *	441,600 *	470,600 *	90.0	73.4	373,100 *	400,400 *	402,900 *			
85.0	71.8	404,000 *	443,800 *	498,400 *	90.0	72.1	375,300 *	412,700 *	457,200 *	95.0	72.3	348,500 *	383,700 *	402,600 *			
90.0	70.5	376,700 *	414,300 *	465,700 *	95.0	70.9	350,700 *	386,000 *	434,500 *	100.0	71.2	326,300 *	359,700 *	397,300 *			
95.0	69.2	352,100 *	387,700 *	436,300 *	100.0	69.7	328,500 *	362,000 *	407,900 *	110.0	69.0	288,700 *	318,900 *	360,300 *			
100.0	67.9	330,100 *	363,700 *	409,700 *	110.0	67.3	290,900 *	321,300 *	362,800 *	120.0	66.7	257,500 *	285,300 *	323,100 *			
110.0	65.2	292,500 *	322,800 *	364,700 *	120.0	64.8	260,000 *	287,700 *	325,700 *	130.0	64.4	231,600 *	257,000 *	292,000 *			
120.0	62.5	261,700 *	289,500 *	327,500 *	130.0	62.3	234,000 *	259,600 *	294,600 *	140.0	62.1	209,600 *	233,200 *	265,600 *			
130.0	59.7	235,800 *	261,400 *	296,400 *	140.0	59.7	212,100 *	235,700 *	268,100 *	150.0	59.7	190,600 *	212,500 *	242,700 *			
140.0	56.8	213,800 *	237,500 *	270,000 *	150.0	57.0	193,200 *	215,200 *	245,300 *	160.0	57.2	174,300 *	194,800 *	223,000 *			
150.0	53.8	194,800 *	216,900 *	247,100 *	160.0	54.3	176,700 *	197,300 *	225,500 *	170.0	54.7	159,800 *	179,000 *	205,500 *			
160.0	50.7	178,500 *	199,100 *	227,400 *	170.0	51.4	162,200 *	181,600 *	208,200 *	180.0	52.0	147,000 *	165,200 *	190,300 *			
170.0	47.4	163,900 *	183,400 *	210,000 *	180.0	48.4	149,500 *	167,800 *	192,800 *	190.0	49.3	135,600 *	152,900 *	176,500 *			
180.0	44.0	151,300 *	169,500 *	194,700 *	190.0	45.3	138,100 *	155,300 *	179,100 *	200.0	46.5	125,400 *	141,700 *	164,200 *			
190.0	40.3	139,800 *	157,000 *	180,900 *	200.0	42.0	127,800 *	144,400 *	166,900 *	210.0	43.5	116,100 *	131,800 *	153,100 *			
200.0	36.2	129,600 *	146,100 *	168,600 *	210.0	38.5	118,500 *	134,200 *	155,800 *	220.0	40.3	107,800 *	122,600 *	143,100 *			
210.0	31.8	120,300 *	135,900 *	157,500 *	220.0	34.6	110,300 *	125,200 *	145,600 *	230.0	36.9	100,200 *	114,300 *	133,900 *			
213.5	30.0	117,200 *	132,700 *	152,900 *	230.0	30.3	102,700 *	116,900 *	136,400 *	240.0	33.1	93,100 *	106,900 *	125,400 *			
					230.6	30.0	102,200 *	116,400 *	136,000 *	247.7	30.0	88,100 *	101,400 *	119,400 *			
reeves			20(2x10)			reeves			16(2x8)			reeves			16(2x8)		

Note: Loads enclosed in bold lines in the table require double-drum specifications. Lifting capacities may vary depending on hook used or with / without auxiliary sheave. Please refer rated chart in operator's cabin.



LIFTING CAPACITIES

Luffing Jib Lifting Capacities

Unit: lbs

Counterweight: 440,900 lbs, Carbody weight: 110,200 lbs, Pallet Weight: 286,600 lbs x 52.5 ft

118 ft (36 m) Boom													
Load Radius (ft)	79 ft Jib			98 ft Jib			118 ft Jib			138 ft Jib			Load Radius (ft)
	Boom Angle (deg.)			Boom Angle (deg.)			Boom Angle (deg.)			Boom Angle (deg.)			
	86	76	66	86	76	66	86	76	66	86	76	66	
	Double drum			Double drum			Double drum			Double drum			
47.2	440,900 *												47.2
50	418,000 *												50
55	392,000 *												55
60	377,400 *			362,300 *			354,100 *						60
65	364,600 *			346,700 *			337,100 *						65
70	354,900 *			333,600 *			322,500 *			310,100 *			70
75	347,800 *			322,300 *			309,500 *			300,500 *			75
80	339,400 *			312,700 *			297,900 *			289,000 *			80
85	322,600			304,700 *			288,000 *			278,000 *			85
90	300,500	334,300 *		301,000 *			279,500 *			268,400 *			90
95	252,500	325,000 *		282,500	306,300 *		272,200 *			259,900 *			95
100		315,600		261,100	295,900 *		262,800			251,800			100
110		291,800		225,500	279,400 *		232,200			235,700			110
120					268,000 *		205,300	250,100 *		210,600	239,800 *		120
130					240,700 *			238,400		187,500	226,000 *		130
140								226,000	217,900	167,000	214,700 *		140
150								204,300	200,400	144,800	206,000 *		150
160									185,800		187,200 *	183,900	160
170									173,000			170,900	170
180												159,400	180
190												149,300	190
reeves	16(2x8)			16(2x8)			12(2x6)			12(2x6)			reeves

Load Radius (ft)	157 ft Jib			177 ft Jib			197 ft Jib			217 ft Jib			Load Radius (ft)
	Boom Angle (deg.)			Boom Angle (deg.)			Boom Angle (deg.)			Boom Angle (deg.)			
	86	76	66	86	76	66	86	76	66	86	76	66	
	Double drum			Double drum			Double drum			Double drum			
75	295,700 *												75
80	282,700 *			262,500 *									80
85	271,200 *			260,600 *									85
90	261,000 *			254,400 *			221,100 *						90
95	251,700 *			246,100 *			215,100 *			195,700 *			95
100	243,500 *			237,400 *			206,800 *			194,700 *			100
110	229,200 *			222,300 *			191,700 *			192,300 *			110
120	211,300			209,900 *			178,500 *			188,400 *			120
130	191,600	218,100 *		194,100			166,800 *			181,400 *			130
140	172,200	205,400 *		175,600	199,400 *		156,400 *	180,800 *		170,400 *			140
150	156,400	195,100 *		159,500	188,200 *		147,000 *	169,000 *		153,600 *			150
160	143,200	185,700 *		146,100	179,000 *		138,900 *	159,400 *		139,400 *	168,500 *		160
170		171,400 *	168,900	134,500	168,300 *		131,500 *	150,400 *		127,000 *	157,500 *		170
180		155,000 *	157,400	122,400	156,100 *	155,200	124,500 *	142,900 *		116,000 *	145,400 *		180
190		140,400 *	147,300	106,200 *	143,000 *	145,100	117,400 *	138,700 *		106,100 *	132,200 *		190
200			138,500		132,500 *	136,300	108,800 *	131,900 *	136,300	97,600 *	121,000 *		200
210						128,500		122,900 *	128,300	89,800 *	111,000 *	125,900	210
220						121,400		113,000 *	121,100	82,500 *	102,000 *	118,400 *	220
230									114,400		93,800 *	110,800 *	230
240									108,500		86,400 *	102,200 *	240
250												94,500 *	250
260												87,800 *	260
reeves	12(2x6)			12(2x6)			8(2x4)			8(2x4)			reeves

Note: Loads enclosed in bold lines in the table require double-drum specifications. Lifting capacities may vary depending on hook used or with / without auxiliary sheave. Please refer rated chart in operator's cabin.



SL6000G

Luffing Jib Lifting Capacities

Unit: lbs

Counterweight: 440,900 lbs, Carbody weight: 110,200 lbs, Pallet Weight: 286,600 lbs x 52.5 ft

118 ft (36 m) Boom

Load Radius (ft)	236 ft Jib			256 ft Jib			276 ft Jib			Load Radius (ft)
	Boom Angle (deg.)			Boom Angle (deg.)			Boom Angle (deg.)			
	86	76	66	86	76	66	86	76	66	
	Double drum			Double drum			Double drum			
100	161,500 *									100
110	159,600 *									110
120	156,500 *			134,300 *			114,100 *			120
130	150,500 *			128,300 *			107,600 *			130
140	142,300 *			120,800 *			100,900 *			140
150	134,900 *			114,100 *			94,900 *			150
160	128,300 *			108,100 *			89,600 *			160
170	122,000 *	136,700 *		102,700 *	115,700 *		84,800 *			170
180	114,900 *	130,700 *		97,700 *	109,700 *		80,300 *	90,700 *		180
190	105,200 *	126,800 *		93,100 *	104,200 *		76,100 *	85,600 *		190
200	97,400 *	119,900 *		88,900 *	99,100 *		72,400 *	81,200 *		200
210	89,900 *	111,300 *		84,900 *	94,500 *		68,900 *	77,100 *		210
220	82,800 *	102,300 *	116,700 *	81,100 *	90,300 *		65,700 *	73,200 *		220
230	76,200 *	94,300 *	109,500 *	77,100 *	86,200 *	95,300 *	62,700 *	69,700 *		230
240	70,200 *	87,100 *	101,100 *	71,300 *	82,500 *	91,200 *	59,800 *	66,500 *		240
250		80,400 *	93,500 *	65,900 *	79,000 *	87,500 *	57,200 *	63,600 *	70,500 *	250
260		74,300 *	86,800 *	60,400 *	74,600 *	83,400 *	54,600 *	60,800 *	67,300 *	260
270			81,100 *		68,900 *	78,900 *	52,000 *	58,100 *	64,300 *	270
280			76,500 *		63,900 *	75,100 *	49,600 *	55,800 *	61,600 *	280
290						70,400 *		53,600 *	59,200 *	290
300						65,500 *		51,500 *	56,900 *	300
310									54,800 *	310
320									52,900 *	320
reeves	8(2x4)			8(2x4)			8(2x4)			reeves

Note: Loads enclosed in bold lines in the table require double-drum specifications.
 Lifting capacities may vary depending on hook used or with / without auxiliary sheave.
 Please refer rated chart in operator's cabin.



LIFTING CAPACITIES

Luffing Jib Lifting Capacities

Unit: lbs

Counterweight: 440,900 lbs, Carbody weight: 110,200 lbs, Pallet Weight: 286,600 lbs x 52.5 ft

138 ft (42 m) Boom													
Load Radius (ft)	79 ft Jib			98 ft Jib			118 ft Jib			138 ft Jib			Load Radius (ft)
	Boom Angle (deg.)			Boom Angle (deg.)			Boom Angle (deg.)			Boom Angle (deg.)			
	86	76	66	86	76	66	86	76	66	86	76	66	
	Double drum			Double drum			Double drum			Double drum			
55	405,500 *												55
60	390,200 *			374,600 *									60
65	377,800 *			359,000 *									65
70	368,600 *			346,000 *			334,100 *						70
75	362,100 *			334,900 *			321,000 *					312,500 *	75
80	353,000			325,400 *			309,600 *					300,100 *	80
85	331,300			317,900 *			299,700 *					289,000 *	85
90	303,000			308,400			291,400 *					279,500 *	90
95	271,500			288,900			284,300 *					270,900 *	95
100		337,800		266,700	312,900		274,100					262,100	100
110		292,600		230,000	291,400		237,300					241,100	110
120		268,500			268,200		208,800	264,500 *				214,500	120
130					245,400		181,800	245,300				190,700	130
140								224,000	264,500 *			170,900	140
150								206,200	206,200			154,500	150
160									181,800			189,300	160
170									169,000			174,100	170
180												166,900	180
190												145,500	190
200												137,100	200
reeves	16(2x8)			16(2x8)			12(2x6)			12(2x6)			reeves

Load Radius (ft)	157 ft Jib			177 ft Jib			197 ft Jib			217 ft Jib			Load Radius (ft)	
	Boom Angle (deg.)			Boom Angle (deg.)			Boom Angle (deg.)			Boom Angle (deg.)				
	86	76	66	86	76	66	86	76	66	86	76	66		
	Double drum			Double drum			Double drum			Double drum				
75	291,700 *												75	
80	287,800 *			246,100 *									80	
85	281,400 *			243,900 *									85	
90	271,400 *			241,600 *			208,200 *						90	
95	262,100 *			238,800 *			206,500 *						95	
100	253,900 *			235,700 *			203,500 *					180,900 *	100	
110	239,600 *			228,900 *			192,600 *					179,600 *	110	
120	217,200			216,400			179,900 *					176,800 *	120	
130	194,900			198,600			168,000 *					173,300 *	130	
140	174,900	231,400 *		178,100	211,600 *		157,300 *					169,400 *	140	
150	158,200	202,100		161,300	199,500 *		147,900 *					164,100 *	150	
160	144,800	187,400		147,700	185,200		139,700 *	163,800 *				154,700 *	160	
170		174,100		136,000	172,000		132,100 *	155,600 *				140,900 *	170	
180		161,100	153,600	125,400	159,700		125,100 *	147,900 *				128,100 *	180	
190		146,300 *	143,500	115,500	147,600		118,700 *	138,400 *				116,800 *	190	
200			135,100		134,800 *	132,700	109,700 *	130,500 *				106,900 *	200	
210			127,400		123,200 *	124,900		123,800 *	125,000			98,300 *	210	
220						117,900		117,000 *	117,800			90,400 *	220	
230						111,500			111,300			83,200 *	230	
240						106,000			105,600			81,800 *	240	
250									100,400				97,800	250
260													92,100	260
reeves	12(2x6)			8(2x4)			8(2x4)			8(2x4)			reeves	

Note: Loads enclosed in bold lines in the table require double-drum specifications. Lifting capacities may vary depending on hook used or with / without auxiliary sheave. Please refer rated chart in operator's cabin.



SL6000G

Luffing Jib Lifting Capacities

Counterweight: 440,900 lbs, Carbody weight: 110,200 lbs, Pallet Weight: 286,600 lbs x 52.5 ft

138 ft (42 m) Boom

Load Radius (ft)	236 ft Jib			256 ft Jib			276 ft Jib			Load Radius (ft)
	Boom Angle (deg.)			Boom Angle (deg.)			Boom Angle (deg.)			
	86	76	66	86	76	66	86	76	66	
	Double drum			Double drum			Double drum			
100	153,100 *									100
110	151,100 *									110
120	148,600 *			129,100 *			113,000 *			120
130	145,800 *			126,100 *			108,100 *			130
140	142,000 *			121,500 *			101,400 *			140
150	135,300 *			114,800 *			95,300 *			150
160	128,700 *			108,700 *			89,900 *			160
170	122,500 *	141,000 *		103,000 *			85,100 *			170
180	115,600 *	135,700 *		97,800 *	112,100 *		80,800 *	92,900 *		180
190	106,000 *	129,300 *		93,100 *	106,400 *		76,600 *	87,800 *		190
200	97,600 *	123,600 *		88,900 *	101,200 *		72,900 *	83,300 *		200
210	89,900 *	115,300 *		84,900 *	96,300 *		69,300 *	79,100 *		210
220	82,800 *	106,100 *	113,600	80,500 *	91,800 *		65,900 *	75,200 *		220
230	76,300 *	97,600 *	107,100	75,200 *	87,800 *	98,600 *	62,900 *	71,700 *		230
240	70,700 *	90,200 *	101,400	69,600 *	84,100 *	94,200 *	60,000 *	68,300 *		240
250		83,400 *	96,100	65,200 *	80,600 *	90,100 *	57,300 *	65,200 *	73,000 *	250
260		77,100 *	90,600	60,400 *	76,500 *	86,300 *	54,600 *	62,300 *	69,600 *	260
270			84,900 *		71,300 *	82,700 *	51,800 *	59,700 *	66,500 *	270
280			78,700 *		66,100 *	77,200 *	49,800 *	57,200 *	63,600 *	280
290			73,000 *		61,000 *	71,800 *		54,800 *	61,000 *	290
300						66,700 *		52,600 *	58,600 *	300
310									56,300 *	310
320									54,100 *	320
330									52,200 *	330
reeves	8(2x4)			8(2x4)			8(2x4)			reeves

Note: Loads enclosed in bold lines in the table require double-drum specifications.
 Lifting capacities may vary depending on hook used or with / without auxiliary sheave.
 Please refer rated chart in operator's cabin.



LIFTING CAPACITIES

Luffing Jib Lifting Capacities

Unit: lbs

Counterweight: 440,900 lbs, Carbody weight: 110,200 lbs, Pallet Weight: 286,600 lbs x 52.5 ft

157 ft (48 m) Boom													
Load Radius (ft)	79 ft Jib			98 ft Jib			118 ft Jib			138 ft Jib			Load Radius (ft)
	Boom Angle (deg.)			Boom Angle (deg.)			Boom Angle (deg.)			Boom Angle (deg.)			
	86	76	66	86	76	66	86	76	66	86	76	66	
	Double drum			Double drum			Double drum			Double drum			
55	415,600 *												55
60	400,200 *			384,500 *									60
65	387,700 *			368,500 *									65
70	378,500 *			355,400 *			343,300 *						70
75	372,200 *			344,200 *			330,200 *						75
80	363,100			334,900 *			318,600 *				314,300 *		80
85	340,800			327,300 *			308,500 *				307,900 *		85
90	310,900			315,800			300,400 *				287,700 *		90
95	284,000	338,600		295,800			292,400				279,100 *		95
100		321,800		272,600			280,900				269,800		100
110		292,600		234,700			242,100				245,900		110
120		267,200			265,900		212,600	266,100			218,100		120
130					242,100		188,200	242,200			193,500	240,100	130
140								221,100			173,300	219,100	140
150								203,300			156,500	201,300	150
160								188,400				186,400	160
170									165,000			173,300	170
180									153,900				180
190									144,000				190
200													200
reeves	16(2x8)			16(2x8)			12(2x6)			12(2x6)			reeves

Load Radius (ft)	157 ft Jib			177 ft Jib			197 ft Jib			217 ft Jib			Load Radius (ft)	
	Boom Angle (deg.)			Boom Angle (deg.)			Boom Angle (deg.)			Boom Angle (deg.)				
	86	76	66	86	76	66	86	76	66	86	76	66		
	Double drum			Double drum			Double drum			Double drum				
80	267,100 *			231,300 *									80	
85	263,400 *			229,100 *									85	
90	259,200 *			226,600 *			195,700 *						90	
95	254,800 *			223,800 *			193,900 *				168,900 *		95	
100	250,100 *			220,600 *			191,900 *				167,400 *		100	
110	239,900 *			213,800 *			187,200 *				164,200 *		110	
120	219,500			206,000 *			179,100 *				160,600 *		120	
130	197,700			195,100			169,100 *				156,600 *		130	
140	177,200	217,200		180,700	215,000		158,300 *				152,100 *		140	
150	160,400	199,500		163,400	197,300		148,800 *				147,200 *		150	
160	146,700	184,600		149,600	182,400		140,400 *	168,000 *			139,800 *		160	
170	134,500	171,400		137,400	169,300		132,800 *	157,800 *			129,400 *	167,500	170	
180		159,700	149,700	126,500	157,700		125,800 *	148,600 *			117,900 *	154,800	180	
190		149,500	139,800	116,400 *	147,300		119,600 *	140,200 *			107,800 *	141,000	190	
200		137,800	131,300		138,500	129,100	110,600 *	133,100 *			99,100 *	128,700 *	200	
210					128,000	121,500		126,600 *	121,600		91,100 *	118,500 *	210	
220			116,800			114,600		119,600 *	114,600		83,800 *	109,600 *	220	
230						108,200		111,200 *	108,200			100,900 *	105,600	230
240						102,700		102,100 *	102,700			93,000 *	100,000	240
250									97,500			85,600 *	94,900	250
260									92,700				90,100	260
270													85,800	270
280													81,700	280
reeves	12(2x6)			8(2x4)			8(2x4)			8(2x4)			reeves	

Note: Loads enclosed in bold lines in the table require double-drum specifications. Lifting capacities may vary depending on hook used or with / without auxiliary sheave. Please refer rated chart in operator's cabin.



SL6000G

Luffing Jib Lifting Capacities

Counterweight: 440,900 lbs, Carbody weight: 110,200 lbs, Pallet Weight: 286,600 lbs x 52.5 ft

157 ft (48 m) Boom

Load Radius (ft)	236 ft Jib			256 ft Jib			276 ft Jib			Load Radius (ft)
	Boom Angle (deg.)			Boom Angle (deg.)			Boom Angle (deg.)			
	86	76	66	86	76	66	86	76	66	
	Double drum			Double drum			Double drum			
100	145,800 *									100
110	143,600 *									110
120	141,000 *			122,400 *			106,800 *			120
130	138,000 *			120,300 *			105,000 *			130
140	134,800 *			117,900 *			102,000 *			140
150	131,400 *			114,900 *			95,800 *			150
160	127,800 *			109,100 *			90,300 *			160
170	122,900 *	142,900 *		103,400 *			85,200 *			170
180	116,200 *	136,200 *		98,200 *	114,600 *		80,500 *			180
190	106,900 *	131,500 *		93,300 *	108,600 *		76,100 *			190
200	98,300 *	126,000 *		89,100 *	103,200 *		72,400 *	84,900 *		200
210	90,400 *	118,800 *		85,000 *	98,300 *		69,200 *	80,400 *		210
220	83,200 *	110,300 *		80,700 *	93,700 *		66,100 *	76,200 *		220
230	76,700 *	101,300 *	103,800	75,600 *	89,300 *		63,100 *	72,400 *		230
240	71,000 *	93,400 *	98,300	69,900 *	85,600 *		60,300 *	69,200 *		240
250		86,200 *	93,100	64,700 *	82,100 *	91,000	57,000 *	66,000 *		250
260		79,600 *	88,300	59,800 *	78,200 *	86,300	54,100 *	63,000 *	72,000 *	260
270			84,000		73,700 *	81,800	51,800 *	60,300 *	68,700 *	270
280			80,000		68,300 *	77,800	49,800 *	57,800 *	65,600 *	280
290			76,100		63,200 *	74,100		55,400 *	62,900 *	290
300						70,000		53,200 *	60,200 *	300
310						65,300 *			57,600 *	310
320						60,600 *			55,400 *	320
330									53,500 *	330
reeves	8(2x4)			8(2x4)			8(2x4)			reeves

Note: Loads enclosed in bold lines in the table require double-drum specifications.
 Lifting capacities may vary depending on hook used or with / without auxiliary sheave.
 Please refer rated chart in operator's cabin.



LIFTING CAPACITIES

Luffing Jib Lifting Capacities

Unit: lbs

Counterweight: 440,900 lbs, Carbody weight: 110,200 lbs, Pallet Weight: 286,600 lbs x 52.5 ft

177 ft (54 m) Boom													
Load Radius (ft)	79 ft Jib			98 ft Jib			118 ft Jib			138 ft Jib			Load Radius (ft)
	Boom Angle (deg.)			Boom Angle (deg.)			Boom Angle (deg.)			Boom Angle (deg.)			
	86	76	66	86	76	66	86	76	66	86	76	66	
	Double drum			Double drum			Double drum			Double drum			
60	408,000 *			392,600 *									60
65	395,100 *			376,300 *									65
70	385,800 *			362,800 *			340,200 *						70
75	379,300 *			351,300 *			332,200 *				288,700 *		75
80	370,500			341,700 *			323,500 *				283,300 *		80
85	350,200			334,200 *			314,600 *				277,600 *		85
90	319,100			324,700			305,400 *				271,100 *		90
95	291,000			303,100			296,100 *				264,400 *		95
100		321,800		278,800			283,700				257,500 *		100
110		292,600		239,300			246,100				243,700 *		110
120		265,100			263,100		216,300				220,000		120
130				238,600			191,300	238,800			196,400	236,800	130
140				217,900				218,100			175,700	215,900	140
150				200,400				200,400			158,700	198,400	150
160					173,000			185,700				183,700	160
170					160,800				160,700			170,700	170
180									149,700			159,100	180
190									140,000			149,100	190
200												129,700	200
210												122,200	210
reeves	16(2x8)			16(2x8)			12(2x6)			12(2x6)			reeves

Load Radius (ft)	157 ft Jib			177 ft Jib			197 ft Jib			217 ft Jib			Load Radius (ft)	
	Boom Angle (deg.)			Boom Angle (deg.)			Boom Angle (deg.)			Boom Angle (deg.)				
	86	76	66	86	76	66	86	76	66	86	76	66		
	Double drum			Double drum			Double drum			Double drum				
80	246,800 *												80	
85	242,900 *												85	
90	238,700 *			208,600 *									90	
95	234,300 *			205,600 *			179,700 *				157,800 *		95	
100	229,600 *			202,300 *			177,600 *				156,400 *		100	
110	219,300 *			195,300 *			172,900 *				153,200 *		110	
120	208,800 *			187,500 *			167,300 *				149,300 *		120	
130	195,600			179,500 *			161,400 *				145,000 *		130	
140	179,800	213,900		171,400 *			155,300 *				140,400 *		140	
150	162,500	196,400		163,200 *			148,900 *				135,500 *		150	
160	148,400	181,700		151,000	179,700		141,000 *	173,000 *			130,500 *		160	
170	131,800	168,800		139,100	166,700		133,400 *	162,200 *			125,500 *	161,200	170	
180		157,300		127,300	155,100		126,400 *	152,500 *			119,000 *	153,100	180	
190		147,100		114,700 *	144,900		120,100 *	143,700 *			108,700 *	142,900	190	
200		138,300	127,500	136,100			112,600 *	136,100			99,800 *	133,000	200	
210			120,100	128,100	117,700		97,600 *	128,500			91,600 *	122,400 *	210	
220			113,300		110,900			121,100	111,100		84,200 *	112,000 *	220	
230					104,700			114,500	104,900			102,900 *	102,300	230
240					99,300			105,900 *	99,400			95,300 *	96,700	240
250					94,400				94,300			87,900 *	91,700	250
260									89,700				87,000	260
270													82,700	270
280													78,800	280
290													75,200	290
reeves	8(2x4)			8(2x4)			8(2x4)			8(2x4)			reeves	

Note: Loads enclosed in bold lines in the table require double-drum specifications. Lifting capacities may vary depending on hook used or with / without auxiliary sheave. Please refer rated chart in operator's cabin.



SL6000G

Luffing Jib Lifting Capacities

Counterweight: 440,900 lbs, Carbody weight: 110,200 lbs, Pallet Weight: 286,600 lbs x 52.5 ft

177 ft (54 m) Boom

Load Radius (ft)	236 ft Jib			256 ft Jib			276 ft Jib			Load Radius (ft)
	Boom Angle (deg.)			Boom Angle (deg.)			Boom Angle (deg.)			
	86	76	66	86	76	66	86	76	66	
	Double drum			Double drum			Double drum			
100	136,700 *									100
110	134,400 *									110
120	131,600 *			114,600 *			101,000 *			120
130	128,500 *			112,400 *			99,400 *			130
140	125,200 *			109,800 *			97,600 *			140
150	121,500 *			107,100 *			95,600 *			150
160	117,700 *			104,300 *			90,500 *			160
170	113,800 *			101,300 *			85,500 *			170
180	109,900 *	138,600 *		97,900 *	117,400 *		80,700 *			180
190	105,900 *	131,500 *		93,600 *	111,000 *		76,400 *			190
200	98,600 *	125,500 *		89,200 *	105,500 *		72,500 *	86,800 *		200
210	91,100 *	118,800 *		85,100 *	100,200 *		68,800 *	82,200 *		210
220	83,800 *	110,900 *		80,900 *	95,400 *		65,400 *	77,900 *		220
230	77,100 *	101,800 *		76,000 *	91,100 *		62,200 *	73,900 *		230
240	71,300 *	95,100 *		70,300 *	87,200 *		59,200 *	70,500 *		240
250		88,700 *	89,900	65,000 *	83,600 *	87,700	56,600 *	67,300 *		250
260		82,400 *	85,200	60,000 *	80,100 *	83,000	54,100 *	64,300 *	74,500 *	260
270		76,100 *	80,900		76,300 *	78,700	51,800 *	61,400 *	70,800 *	270
280		70,200 *	77,100		70,600 *	74,900	49,600 *	58,900 *	67,700 *	280
290			73,500		65,400 *	71,300		56,400 *	64,600 *	290
300			70,100			67,900		54,000 *	61,700 *	300
310						64,800		51,700 *	59,100 *	310
320						62,100		48,700 *	56,700 *	320
330						58,800			54,700 *	330
340									52,700 *	340
reeves	8(2x4)			8(2x4)			8(2x4)			reeves

Note: Loads enclosed in bold lines in the table require double-drum specifications.
 Lifting capacities may vary depending on hook used or with / without auxiliary sheave.
 Please refer rated chart in operator's cabin.



LIFTING CAPACITIES

Luffing Jib Lifting Capacities

Unit: lbs

Counterweight: 440,900 lbs, Carbody weight: 110,200 lbs, Pallet Weight: 286,600 lbs x 52.5 ft

197 ft (60 m) Boom														
Load Radius (ft)	79 ft Jib			98 ft Jib			118 ft Jib			138 ft Jib			Load Radius (ft)	
	Boom Angle (deg.)			Boom Angle (deg.)			Boom Angle (deg.)			Boom Angle (deg.)				
	86	76	66	86	76	66	86	76	66	86	76	66		
	Double drum			Double drum			Double drum			Double drum				
60	414,300 *			361,500 *										60
65	401,100 *			361,500 *										65
70	391,200 *			355,000 *			312,000 *							70
75	375,900 *			345,500 *			304,700 *					265,700 *		75
80	355,600 *			334,100 *			296,900 *					260,600 *		80
85	333,900 *			322,500 *			288,800 *					254,900 *		85
90	314,800 *			311,100 *			280,300 *					248,900 *		90
95	294,300			297,200 *			271,600 *					242,700 *		95
100				280,900			263,000 *					236,400 *		100
110				243,400			246,400 *					223,500 *		110
120		261,400			259,200		219,600					210,700 *		120
130		237,100			235,000		194,300	235,200				195,600		130
140					214,400			214,600				178,400	212,400	140
150					197,100			197,300				160,900	195,100	150
160								182,700				180,700		160
170						156,000						167,900		170
180						145,500				145,400		156,500		180
190						136,200				136,000		146,400		190
200										127,800			125,500	200
210													118,200	210
reeves	16(2x8)			12(2x6)			12(2x6)			12(2x6)			reeves	

Load Radius (ft)	157 ft Jib			177 ft Jib			197 ft Jib			217 ft Jib			Load Radius (ft)	
	Boom Angle (deg.)			Boom Angle (deg.)			Boom Angle (deg.)			Boom Angle (deg.)				
	86	76	66	86	76	66	86	76	66	86	76	66		
	Double drum			Double drum			Double drum			Double drum				
80	228,100 *													80
85	224,600 *													85
90	220,400 *			194,300 *										90
95	216,100 *			191,400 *			168,100 *							95
100	211,600 *			188,200 *			165,900 *					146,200 *		100
110	202,100 *			181,400 *			161,200 *					142,700 *		110
120	192,000 *			173,900 *			155,800 *					138,900 *		120
130	182,100 *			166,200 *			150,000 *					134,700 *		130
140	172,500 *	210,400		158,500 *			144,100 *					130,300 *		140
150	163,300 *	193,100		150,800 *			138,100 *					125,600 *		150
160	150,100	178,700		143,500 *	176,500		132,000 *					120,700 *		160
170	137,600	165,900		136,500 *	163,700		126,200 *	164,400				115,900 *	154,200	170
180		154,500		128,600 *	152,300		120,500 *	153,000				111,100 *	151,000	180
190		144,400		118,200 *	142,200		115,000 *	142,900				106,600 *	140,500	190
200		135,800			133,400		110,100 *	134,100				99,900 *	131,700	200
210			116,100		125,600	113,700	102,900 *	126,100				92,400 *	123,700	210
220			109,400		118,500	107,000		118,900	107,600			84,800 *	115,600	220
230			103,400			101,000		112,400	101,400				106,600 *	98,800
240			98,200			95,800		106,500	96,000			98,000 *	93,400	240
250						90,900			91,000			90,500 *	88,400	250
260									86,400			83,600 *	83,800	260
270									82,300				79,600	270
280									78,600				75,700	280
290													72,300	290
reeves	8(2x4)			8(2x4)			8(2x4)			8(2x4)			reeves	

Note: Loads enclosed in bold lines in the table require double-drum specifications. Lifting capacities may vary depending on hook used or with / without auxiliary sheave. Please refer rated chart in operator's cabin.



SL6000G

Luffing Jib Lifting Capacities

Counterweight: 440,900 lbs, Carbody weight: 110,200 lbs, Pallet Weight: 286,600 lbs x 52.5 ft

197 ft (60 m) Boom

Load Radius (ft)	236 ft Jib			256 ft Jib			276 ft Jib			Load Radius (ft)
	Boom Angle (deg.)			Boom Angle (deg.)			Boom Angle (deg.)			
	86	76	66	86	76	66	86	76	66	
	Double drum			Double drum			Double drum			
120	121,400 *			108,000 *			94,800 *			120
130	118,400 *			105,800 *			93,100 *			130
140	115,100 *			103,200 *			91,200 *			140
150	111,400 *			100,500 *			89,200 *			150
160	107,700 *			97,700 *			87,000 *			160
170	104,000 *			94,700 *			84,400 *			170
180	100,300 *	131,900 *		91,600 *			81,100 *			180
190	96,400 *	131,400 *		88,400 *			76,600 *			190
200	92,700 *	127,300 *		85,400 *	107,800 *		72,700 *	89,400 *		200
210	89,100 *	121,400		82,500 *	102,300 *		68,900 *	84,700 *		210
220	84,500 *	114,000		79,600 *	97,400 *		65,400 *	80,300 *		220
230	77,800 *	105,500 *		76,500 *	92,800 *		62,200 *	76,300 *		230
240	71,700 *	97,100 *		70,600 *	88,800 *		59,200 *	72,600 *		240
250	66,100 *	89,400 *	86,500	65,200 *	84,800 *		56,600 *	69,200 *		250
260		83,200 *	82,000	60,200 *	80,700 *	79,500	54,100 *	66,000 *		260
270		78,500 *	77,800		76,500 *	75,600	51,800 *	63,000 *	72,200	270
280		72,600 *	74,000		72,700 *	71,600	49,600 *	60,300 *	69,700	280
290			70,400		67,700 *	68,200		57,700 *	66,400	290
300			67,100		62,400 *	65,000		55,300 *	63,100	300
310			64,100			61,900		52,800 *	60,100	310
320			61,400			59,200		50,000 *	57,300	320
330						56,700			54,700	330
340									52,300	340
350									49,900	350
360									47,800	360
reeves	8(2x4)			8(2x4)			8(2x4)			reeves

Note: Loads enclosed in bold lines in the table require double-drum specifications.
 Lifting capacities may vary depending on hook used or with / without auxiliary sheave.
 Please refer rated chart in operator's cabin.



LIFTING CAPACITIES

Luffing Jib Lifting Capacities

Unit: lbs

Counterweight: 440,900 lbs, Carbody weight: 110,200 lbs, Pallet Weight: 286,600 lbs x 52.5 ft

217 ft (66 m) Boom													
Load Radius (ft)	79 ft Jib			98 ft Jib			118 ft Jib			138 ft Jib			Load Radius (ft)
	Boom Angle (deg.)			Boom Angle (deg.)			Boom Angle (deg.)			Boom Angle (deg.)			
	86	76	66	86	76	66	86	76	66	86	76	66	
	Double drum			Double drum			Double drum			Double drum			
65	361,500 *												65
70	358,000 *			318,500 *			311,000 *						70
75	348,400 *			308,500 *			303,700 *			243,800 *			75
80	333,100 *			298,300 *			295,700 *			238,900 *			80
85	313,300 *			288,300 *			287,300 *			233,500 *			85
90	295,900 *			278,000 *			278,900 *			228,000 *			90
95	279,700 *			268,100 *			270,200 *			222,200 *			95
100				258,300			260,900 *			216,300 *			100
110				238,900			240,900 *			204,200 *			110
120		257,300		214,000			219,900			192,400 *			120
130		233,300					197,800	231,400		181,200 *			130
140								211,100		170,700 *	208,900		140
150								194,000		161,100 *	191,800		150
160								179,600			177,400		160
170								166,900			164,700		170
180						151,100			140,700		153,400		180
190						131,600			131,600		143,500		190
200									123,500			121,300	200
210									116,300			114,100	210
220												107,600	220
reeves	12(2x6)			12(2x6)			12(2x6)			8(2x4)			reeves

Load Radius (ft)	157 ft Jib			177 ft Jib			197 ft Jib			217 ft Jib			Load Radius (ft)
	Boom Angle (deg.)			Boom Angle (deg.)			Boom Angle (deg.)			Boom Angle (deg.)			
	86	76	66	86	76	66	86	76	66	86	76	66	
	Double drum			Double drum			Double drum			Double drum			
80	210,300 *												80
85	206,700 *												85
90	202,900 *			179,500 *						135,700 *			90
95	198,700 *			176,700 *			155,900 *			132,300 *			95
100	194,300 *			173,700 *			153,800 *			128,500 *			100
110	185,200 *			167,000 *			149,000 *			124,400 *			110
120	176,000 *			159,900 *			143,800 *			120,000 *			120
130	166,800 *			152,500 *			138,200 *			115,400 *			130
140	157,700 *			145,200 *			132,500 *			110,900 *			140
150	149,100 *			138,200 *			126,800 *			106,300 *			150
160	141,300 *	175,400		131,300 *	173,100		121,100 *			101,700 *	142,700 *		160
170	134,400 *	162,700		124,800 *	160,500		115,500 *	160,500		106,300 *			170
180		151,500		118,800 *	149,300		110,100 *	150,100		101,700 *	129,000		180
190		141,600		113,400 *	139,300		105,000 *	140,200		97,300 *	137,400		190
200		132,900			130,700		100,500 *	131,500		93,300 *	129,000		200
210		125,300	111,900		122,900		96,400 *	123,600		89,300 *	121,200		210
220			105,500		115,900	103,000		116,500		84,700 *	114,100		220
230			99,600			97,000		110,000	97,700		107,500		230
240			94,400			92,000		104,300	92,400		101,000		240
250						87,200		99,000	87,600		93,600 *	84,700	250
260						82,800			83,100		86,100 *	80,300	260
270									79,000			76,300	270
280									75,300			72,400	280
290												69,100	290
300												66,000	300
reeves	8(2x4)			8(2x4)			8(2x4)			8(2x4)			reeves

Note: Loads enclosed in bold lines in the table require double-drum specifications. Lifting capacities may vary depending on hook used or with / without auxiliary sheave. Please refer rated chart in operator's cabin.



SL6000G

Luffing Jib Lifting Capacities

Counterweight: 440,900 lbs, Carbody weight: 110,200 lbs, Pallet Weight: 286,600 lbs x 52.5 ft

217 ft (66 m) Boom

Load Radius (ft)	236 ft Jib			256 ft Jib			276 ft Jib			Load Radius (ft)
	Boom Angle (deg.)			Boom Angle (deg.)			Boom Angle (deg.)			
	86	76	66	86	76	66	86	76	66	
	Double drum			Double drum			Double drum			
120	113,500 *			100,300 *			85,800 *			120
130	110,400 *			98,100 *			83,900 *			130
140	107,000 *			95,700 *			81,900 *			140
150	103,400 *			93,000 *			79,800 *			150
160	99,900 *			90,200 *			77,500 *			160
170	96,300 *			87,200 *			75,100 *			170
180	92,600 *	124,000 *		84,200 *			72,800 *			180
190	88,900 *	123,600 *		81,200 *			70,300 *			190
200	85,400 *	122,500 *		78,300 *	107,000 *		67,800 *	86,000 *		200
210	82,000 *	118,300		75,400 *	103,900 *		65,300 *	81,400 *		210
220	78,700 *	112,300		72,600 *	99,200 *		62,200 *	77,200 *		220
230	75,700 *	105,800		69,700 *	94,400 *		59,400 *	73,500 *		230
240	71,600 *	99,900		67,200 *	90,000 *		56,700 *	70,100 *		240
250	66,500 *	92,700 *		64,300 *	86,000 *		54,000 *	66,800 *		250
260		85,500 *	78,000	60,600 *	81,900 *		51,600 *	63,800 *		260
270		78,900 *	74,300		77,400 *	70,500	49,500 *	61,200 *		270
280		72,900 *	70,600		71,700 *	68,100	46,500 *	58,500 *	62,100	280
290		68,400 *	67,200		67,200 *	65,000	55,900 *	60,000		290
300			64,000		62,400 *	61,800	53,500 *	56,800		300
310			61,000			58,800	50,600 *	54,000		310
320			58,300			56,100		51,200		320
330						53,600		48,700		330
340						51,200		46,500		340
350								44,400		350
360										360
reeves	8(2x4)			8(2x4)			8(2x4)			reeves

Note: Loads enclosed in bold lines in the table require double-drum specifications.
 Lifting capacities may vary depending on hook used or with / without auxiliary sheave.
 Please refer rated chart in operator's cabin.



LIFTING CAPACITIES

Luffing Jib Lifting Capacities

Unit: lbs

Counterweight: 440,900 lbs, Carbody weight: 110,200 lbs, Pallet Weight: 286,600 lbs x 52.5 ft

236 ft (72 m) Boom													
Load Radius (ft)	79 ft Jib			98 ft Jib			118 ft Jib			138 ft Jib			Load Radius (ft)
	Boom Angle (deg.)			Boom Angle (deg.)			Boom Angle (deg.)			Boom Angle (deg.)			
	86	76	66	86	76	66	86	76	66	86	76	66	
	Double drum			Double drum			Double drum			Double drum			
65	340,600 *												65
70	327,500 *			289,300 *									70
75	311,100 *			280,600 *			250,500 *						75
80	292,900 *			271,700 *			244,100 *						80
85	276,100 *			262,600 *			237,600 *						85
90	260,700 *			253,700 *			230,500 *						90
95	246,200 *			245,000 *			223,600 *						95
100				236,100 *			216,700 *						100
110				217,000 *			203,300 *						110
120		252,900		196,600 *			190,900 *						120
130		229,200			229,300		179,500 *						130
140					209,200			207,400					140
150					192,200			190,400					150
160					178,000			176,200					160
170								163,700					170
180						138,000							180
190						129,000							190
200						121,000				119,200			200
210										112,100			210
220												109,800	220
230												97,700	230
240												92,800	240
reeves	12(2x6)			12(2x6)			12(2x6)			8(2x4)			reeves

Load Radius (ft)	157 ft Jib			177 ft Jib			197 ft Jib			217 ft Jib			Load Radius (ft)
	Boom Angle (deg.)			Boom Angle (deg.)			Boom Angle (deg.)			Boom Angle (deg.)			
	86	76	66	86	76	66	86	76	66	86	76	66	
	Double drum			Double drum			Double drum			Double drum			
80	193,800 *												80
85	190,600 *												85
90	187,000 *			165,800 *									90
95	183,000 *			163,200 *			144,400 *						95
100	179,000 *			160,300 *			142,300 *						100
110	170,800 *			154,100 *			137,800 *						110
120	162,200 *			147,600 *			132,800 *						120
130	153,800 *			140,900 *			127,700 *						130
140	145,500 *			134,100 *			122,400 *						140
150	137,800 *			127,500 *			117,100 *						150
160	130,700 *			121,300 *			111,800 *						160
170	124,300 *	172,000		115,400 *	157,300		106,700 *	152,600					170
180		148,400		109,900 *	146,200		101,800 *	147,300					180
190		138,700		104,800 *	136,500		97,100 *	137,400					190
200		130,200			128,000		92,900 *	128,900					200
210		122,600			120,300		89,100 *	121,200					210
220			101,300		113,300			114,100					220
230			95,500		107,100	93,000		107,600					230
240			90,400		101,600	88,000		102,000					240
250			85,900			83,400		96,800	83,900				250
260						79,200			79,600				260
270						75,200			75,600				270
280						71,900			72,000				280
290									68,700				290
300													300
reeves	8(2x4)			8(2x4)			8(2x4)			8(2x4)			reeves

Note: Loads enclosed in bold lines in the table require double-drum specifications. Lifting capacities may vary depending on hook used or with / without auxiliary sheave. Please refer rated chart in operator's cabin.



SL6000G

Luffing Jib Lifting Capacities

Counterweight: 440,900 lbs, Carbody weight: 110,200 lbs, Pallet Weight: 286,600 lbs x 52.5 ft

236 ft (72 m) Boom

Load Radius (ft)	236 ft Jib			256 ft Jib			276 ft Jib			Load Radius (ft)
	Boom Angle (deg.)			Boom Angle (deg.)			Boom Angle (deg.)			
	86	76	66	86	76	66	86	76	66	
	Double drum			Double drum			Double drum			
120	105,100 *			93,900 *						120
130	102,200 *			91,700 *			79,400 *			130
140	99,100 *			89,300 *			77,600 *			140
150	95,700 *			86,600 *			75,700 *			150
160	92,200 *			83,900 *			73,600 *			160
170	88,800 *			81,100 *			71,400 *			170
180	85,400 *			78,300 *			69,200 *			180
190	82,100 *			75,400 *			66,800 *			190
200	78,700 *	113,900 *		72,700 *	100,400 *		64,600 *			200
210	75,600 *	112,400 *		70,000 *	99,700 *		62,300 *	85,000 *		210
220	72,600 *	109,200		67,400 *	98,500 *		60,000 *	83,100 *		220
230	69,700 *	103,400		64,700 *	96,400 *		57,900 *	78,800 *		230
240	67,100 *	97,700		62,300 *	91,800 *		55,800 *	75,200 *		240
250	64,700 *	92,600		60,100 *	87,600 *		54,000 *	71,700 *		250
260		87,300	73,800	58,100 *	83,800 *		52,100 *	68,300 *		260
270		81,600 *	71,000		79,800 *	66,200	50,300 *	65,100 *		270
280		75,400 *	67,300		74,000 *	64,600	48,800 *	62,300 *		280
290		69,500 *	64,000		68,500 *	61,700		59,600 *	57,800	290
300			60,900		63,300 *	58,400		56,900 *	56,200	300
310			57,900			55,300		54,200 *	53,100	310
320			55,300			52,400		51,300 *	50,200	320
330			52,700			49,800		48,600 *	47,600	330
340						47,500			45,200	340
350									42,900	350
360									40,900	360
370									39,100	370
reeves	8(2x4)			8(2x4)			8(2x4)			reeves

Note: Loads enclosed in bold lines in the table require double-drum specifications.
 Lifting capacities may vary depending on hook used or with / without auxiliary sheave.
 Please refer rated chart in operator's cabin.



LIFTING CAPACITIES

Luffing Jib Lifting Capacities

Unit: lbs

Counterweight: 440,900 lbs, Carbody weight: 110,200 lbs, Pallet Weight: 286,600 lbs x 52.5 ft

256 ft (78 m) Boom													
Load Radius (ft)	98 ft Jib			118 ft Jib			138 ft Jib			157 ft Jib			Load Radius (ft)
	Boom Angle (deg.)			Boom Angle (deg.)			Boom Angle (deg.)			Boom Angle (deg.)			
	86	76	66	86	76	66	86	76	66	86	76	66	
	Double drum			Double drum			Double drum			Double drum			
70	262,200 *												70
75	254,600 *			228,600 *									75
80	245,500 *			222,900 *			197,900 *						80
85	232,000 *			216,800 *			193,600 *						85
90	219,700 *			210,600 *			189,000 *			169,600 *			90
95	208,200 *			204,400 *			184,300 *			166,100 *			95
100	197,500 *			197,500 *			179,400 *			162,300 *			100
110	178,000 *			180,700 *			169,900 *			154,800 *			110
120	160,500 *			164,700 *			160,300 *			147,100 *			120
130		225,100		149,900 *			150,000 *			139,400 *			130
140		205,000			203,300		138,900 *			132,000 *			140
150		187,000			186,700		127,300 *			125,100 *			150
160		169,000 *			171,400		116,500 *	170,600		118,700 *	171,300		160
170					156,600 *			157,300		111,200 *	158,500		170
180					142,400 *			144,400 *			146,600 *		180
190					129,100 *			132,400 *			135,000 *		190
200								121,600 *			124,900 *		200
210									105,300		115,400 *		210
220						107,600						99,600	220
230						101,400						93,900	230
240												88,900	240
250												84,300	250
260												80,100	260
reeves	12(2x6)			8(2x4)			8(2x4)			8(2x4)			reeves

Load Radius (ft)	177 ft Jib			197 ft Jib			217 ft Jib			236 ft Jib			Load Radius (ft)	
	Boom Angle (deg.)			Boom Angle (deg.)			Boom Angle (deg.)			Boom Angle (deg.)				
	86	76	66	86	76	66	86	76	66	86	76	66		
	Double drum			Double drum			Double drum			Double drum				
95	148,100 *			133,100 *									95	
100	145,400 *			131,100 *			116,300 *						100	
110	139,700 *			126,900 *			113,100 *						110	
120	133,700 *			122,300 *			109,600 *				96,900 *		120	
130	127,600 *			117,400 *			105,900 *				94,100 *		130	
140	121,400 *			112,400 *			102,000 *				91,200 *		140	
150	115,400 *			107,500 *			98,000 *				88,000 *		150	
160	109,800 *			102,500 *			94,000 *				84,600 *		160	
170	104,400 *			97,800 *			89,900 *				81,400 *		170	
180	99,400 *	155,500 *		93,300 *	139,600 *		86,000 *	123,600 *			78,200 *		180	
190	94,900 *	134,700 *		89,100 *	133,900 *		82,300 *	122,600 *			75,000 *		190	
200	88,900 *	124,800 *		85,300 *	124,500 *		78,800 *	119,800 *			72,000 *	105,500 *	200	
210		115,800 *		81,800 *	115,600 *		75,400 *	113,000 *			69,100 *	104,100 *	210	
220		107,500 *			107,400 *		72,400 *	104,900 *			66,300 *	101,400 *	220	
230		99,800 *	91,500		100,000 *			97,400 *			63,600 *	96,500 *	230	
240		92,400 *	86,600		93,300 *			90,700 *			61,200 *	90,000 *	240	
250			82,000		87,000 *	79,500		84,600 *			59,200 *	83,900 *	250	
260			77,700			75,900		78,800 *	71,700			78,200 *	260	
270			73,900			71,900		73,400 *	69,100			72,900 *	64,200	270
280			70,400			68,400		69,000 *	65,700			68,000 *	63,000	280
290						65,300			62,300			64,100 *	60,100	290
300						62,300			59,100				56,900	300
310									56,200				54,000	310
320									53,700				51,300	320
330													48,900	330
340													46,600	340
reeves	8(2x4)			8(2x4)			8(2x4)			8(2x4)			reeves	

Note: Loads enclosed in bold lines in the table require double-drum specifications. Lifting capacities may vary depending on hook used or with / without auxiliary sheave. Please refer rated chart in operator's cabin.



SL6000G

Luffing Jib Lifting Capacities

Counterweight: 440,900 lbs, Carbody weight: 110,200 lbs, Pallet Weight: 286,600 lbs x 52.5 ft

256 ft (78 m) Boom

Load Radius (ft)	256 ft Jib			276 ft Jib						Load Radius (ft)
	Boom Angle (deg.)			Boom Angle (deg.)						
	86	76	66	86	76	66				
	Double drum			Double drum						
120	86,600 *									120
130	84,500 *			73,100 *						130
140	82,100 *			71,400 *						140
150	79,800 *			69,400 *						150
160	77,100 *			67,300 *						160
170	74,400 *			65,200 *						170
180	71,700 *			63,100 *						180
190	69,000 *			61,100 *						190
200	66,300 *			58,900 *						200
210	63,900 *	92,400 *		56,700 *	78,900 *					210
220	61,500 *	91,500 *		54,600 *	78,400 *					220
230	59,000 *	90,200 *		52,600 *	77,500 *					230
240	56,800 *	87,600 *		50,700 *	75,500 *					240
250	54,700 *	82,700 *		48,900 *	72,100 *					250
260	52,800 *	77,100 *		47,100 *	68,600 *					260
270		71,800 *		45,400 *	65,600 *					270
280		67,100 *		43,900 *	63,100 *					280
290		62,700 *	55,700		60,700 *					290
300		58,500 *	54,700		57,600 *	48,500				300
310		54,400 *	51,300		53,800 *	48,100				310
320		50,600 *	48,600		50,100 *	46,100				320
330			46,100		46,700 *	43,800				330
340			43,800			41,500				340
350			41,600			39,400				350
360			39,800			37,400				360
370						35,500				370
reeves	8(2x4)			8(2x4)						reeves

Note: Loads enclosed in bold lines in the table require double-drum specifications.
 Lifting capacities may vary depending on hook used or with / without auxiliary sheave.
 Please refer rated chart in operator's cabin.



LIFTING CAPACITIES

Luffing Jib Lifting Capacities

Unit: lbs

Counterweight: 440,900 lbs, Carbody weight: 110,200 lbs, Pallet Weight: 286,600 lbs x 52.5 ft

276 ft (84 m) Boom													
Load Radius (ft)	98 ft Jib			118 ft Jib			138 ft Jib			157 ft Jib			Load Radius (ft)
	Boom Angle (deg.)			Boom Angle (deg.)			Boom Angle (deg.)			Boom Angle (deg.)			
	86	76	66	86	76	66	86	76	66	86	76	66	
	Double drum			Double drum			Double drum			Double drum			
75	217,400 *			209,000 *									75
80	204,900 *			203,000 *			182,600 *						80
85	193,300 *			194,100 *			178,800 *						85
90	183,000 *			184,000 *			174,700 *			154,900 *			90
95	173,400 *			174,600 *			170,500 *			151,800 *			95
100	164,500 *			165,900 *			165,200 *			148,600 *			100
110	148,000 *			150,100 *			150,400 *			141,700 *			110
120	133,400 *			136,400 *			137,300 *			134,600 *			120
130				124,100 *			125,400 *			125,600 *			130
140		179,700 *			180,500 *		114,600 *			115,200 *			140
150		161,300 *			162,700 *		104,900 *			105,800 *			150
160		145,400 *			147,500 *		95,900 *	147,800 *		97,400 *			160
170		130,700 *			134,000 *			134,600 *		89,700 *	134,400 *		170
180					121,800 *			122,900 *			122,900 *		180
190					110,500 *			112,500 *			112,700 *		190
200								103,200 *			103,900 *		200
210											95,700 *		210
220											88,100 *		220
reeves	8(2x4)			8(2x4)			8(2x4)			8(2x4)			reeves

276 ft (84 m) Boom													
Load Radius (ft)	177 ft Jib			197 ft Jib			217 ft Jib			236 ft Jib			Load Radius (ft)
	Boom Angle (deg.)			Boom Angle (deg.)			Boom Angle (deg.)			Boom Angle (deg.)			
	86	76	66	86	76	66	86	76	66	86	76	66	
	Double drum			Double drum			Double drum			Double drum			
95	136,000 *												95
100	133,600 *			119,500 *									100
110	128,600 *			115,600 *									110
120	123,000 *			111,300 *			98,100 *			89,100 *			120
130	117,400 *			106,900 *			94,600 *			86,500 *			130
140	111,600 *			102,300 *			91,100 *			83,700 *			140
150	105,300 *			97,800 *			87,600 *			80,700 *			150
160	97,500 *			93,400 *			83,900 *			77,700 *			160
170	90,100 *	133,400 *		88,600 *			80,400 *			74,700 *			170
180	83,200 *	122,100 *		83,100 *	121,100 *		77,000 *			71,800 *			180
190	76,600 *	112,000 *		77,100 *	111,300 *		73,700 *			68,800 *			190
200	70,600 *	103,400 *		71,500 *	102,700 *		68,700 *	100,300 *		66,100 *	97,000 *		200
210		95,500 *		66,200 *	94,900 *		63,800 *	93,700 *		62,400 *	93,000 *		210
220		88,200 *			87,800 *		59,000 *	88,700 *		58,200 *	84,100 *		220
230		81,500 *			81,300 *		54,500 *	84,500 *		53,800 *	81,800 *		230
240		75,300 *			75,400 *		50,100 *	80,400 *		50,000 *	78,500 *		240
250					70,000 *			76,300 *		46,100 *	74,900 *		250
260					64,900 *			71,100 *			71,100 *		260
270								64,600 *			66,800 *		270
280								57,800 *			61,000 *		280
290											55,200 *		290
300											49,300 *		300
reeves	8(2x4)			8(2x4)			8(2x4)			8(2x4)			reeves

Note: Loads enclosed in bold lines in the table require double-drum specifications. Lifting capacities may vary depending on hook used or with / without auxiliary sheave. Please refer rated chart in operator's cabin.



Luffing Jib Lifting Capacities

Counterweight: 440,900 lbs, Carbody weight: 110,200 lbs, Pallet Weight: 286,600 lbs x 52.5 ft

276 ft (84 m) Boom

Load Radius (ft)	256 ft Jib									Load Radius (ft)	
	Boom Angle (deg.)										
	86	76	66								
	Double drum										
120	78,900 *										120
130	76,800 *										130
140	74,600 *										140
150	72,500 *										150
160	70,000 *										160
170	67,600 *										170
180	65,200 *										180
190	62,600 *										190
200	60,300 *										200
210	57,900 *	84,300 *									210
220	55,500 *	82,200 *									220
230	52,700 *	76,400 *									230
240	48,900 *	73,700 *									240
250	45,200 *	71,100 *									250
260	41,800 *	68,400 *									260
270		65,300 *									270
280		62,000 *									280
290		57,300 *									290
300		52,200 *									300
310		46,900 *									310
320		40,000 *									320
reeves	8(2x4)										reeves

Note: Loads enclosed in bold lines in the table require double-drum specifications.
 Lifting capacities may vary depending on hook used or with / without auxiliary sheave.
 Please refer rated chart in operator's cabin.

TRANSPORTATION PLAN

Base Machine

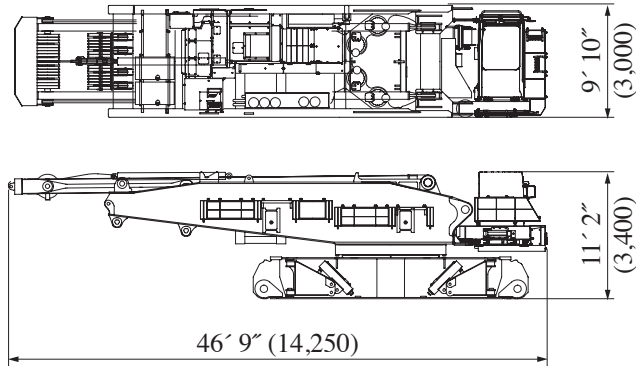
Base machine (A)

With

- Upper/Lower connecting device
- Crane mast
- Mast raising cylinder
- Carbody
- Lower translifter

Without

- Upper translifter
- Aux. platform
- Boom foot pin removal cylinder
- Reeving winch



Weight	140,057 lbs (63,500 kg)
Width	9' 10"
Height (Machine)	11' 2"
Length	46' 9"

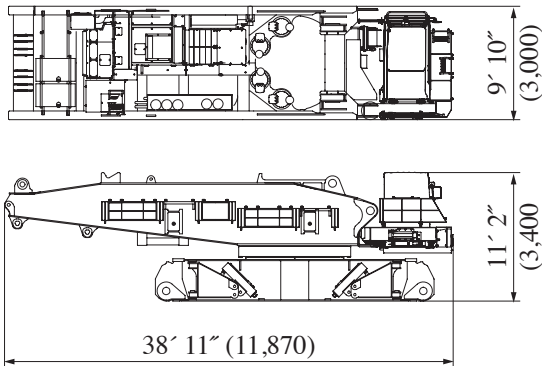
Base machine (B)

With

- Upper/Lower connecting device
- Carbody
- Lower translifter

Without

- Crane mast
- Upper translifter
- Aux. platform
- Boom foot pin removal cylinder
- Reeving winch



Weight	112,919 lbs (51,220 kg)
Width	9' 10"
Height (Machine)	11' 2"
Length	38' 11"

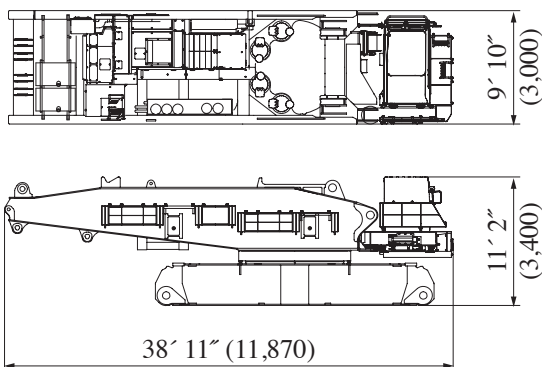
Base machine (C)

With

- Mast raising cylinder
- Carbody

Without

- Upper/Lower connecting device
- Crane mast
- Mast raising cylinder
- Upper translifter
- Lower translifter
- Aux. platform
- Boom foot pin removal cylinder
- Reeving winch



Weight	107,606 lbs (48,810 kg)
Width	9' 10"
Height (Machine)	11' 2"
Length	38' 11"

Upper Structure

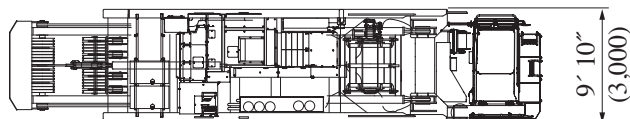
Upper Structure (A)

With

- Upper/Lower connecting device (Upper)
- Crane mast
- Mast raising cylinder

Without

- Upper transflifter
- Lower transflifter
- Aux. platform
- Boom foot pin removal cylinder
- Reeving winch
- Carbody



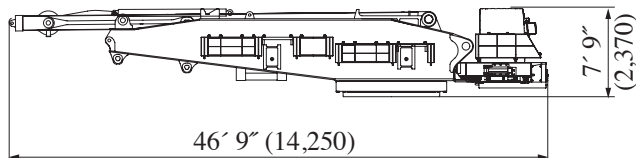
Weight 97,685 lbs
(44,310 kg)

Width 9' 10"

Height 7' 9"

(Machine)

Length 46' 9"



46' 9" (14,250)

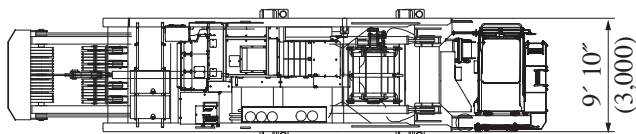
Upper Structure (B)

With

- Upper/Lower connecting device (Upper)
- Crane mast
- Mast raising cylinder
- Upper transflifter

Without

- Aux. platform
- Boom foot pin removal cylinder
- Reeving winch
- Carbody
- Lower transflifter



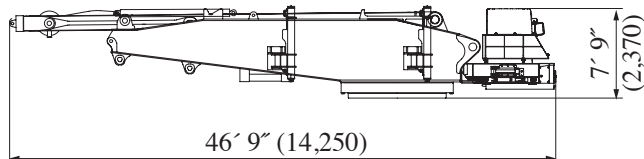
Weight 103,020 lbs
(46,730 kg)

Width 9' 10"

Height 7' 9"

(Machine)

Length 46' 9"



46' 9" (14,250)

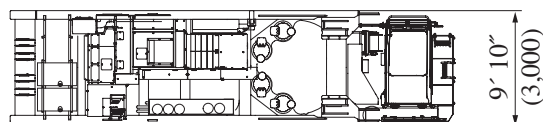
Upper Structure (C)

With

- Upper/Lower connecting device (Upper)

Without

- Crane mast
- Upper transflifter
- Aux. platform
- Boom foot pin removal cylinder
- Reeving winch
- Carbody
- Lower transflifter



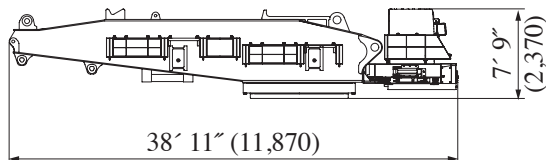
Weight 70,547 lbs
(32,000 kg)

Width 9' 10"

Height 7' 9"

(Machine)

Length 38' 11"

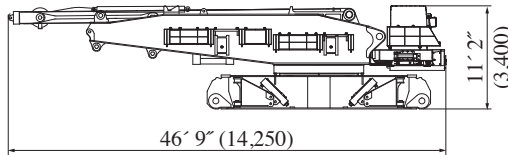


38' 11" (11,870)

PARTS AND ATTACHMENTS

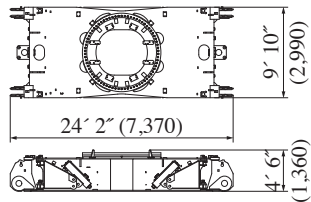
Base Machine (A)

With upper/lower connecting devices, crane mast, mast raising cylinder, carbody, lower transflifer.
Weight: 140,057 lbs Width: 9' 10"



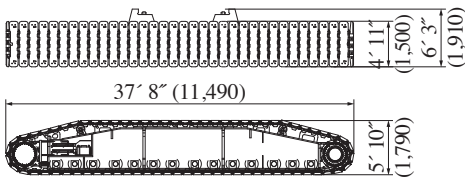
Carbody

With upper/lower connecting devices (lower).
Weight: 49,846 lbs Width: 9' 10"



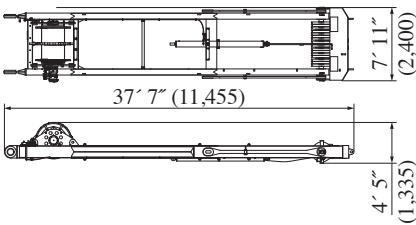
Crawler frame (right)

Weight: 88,183 lbs Width: 4' 11"



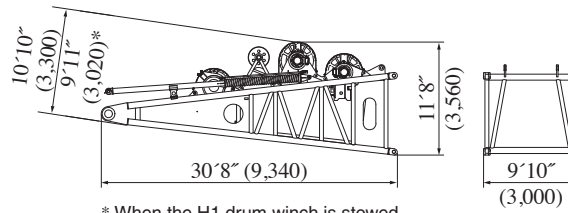
Crane Mast

Weight: 27,138 lbs



9 m Boom Base

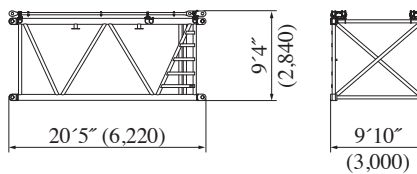
With H1, H2 and W2 winches including ropes, guide sheave, and boom backstop
Weight: 62,698 lbs



* When the H1 drum winch is stowed.

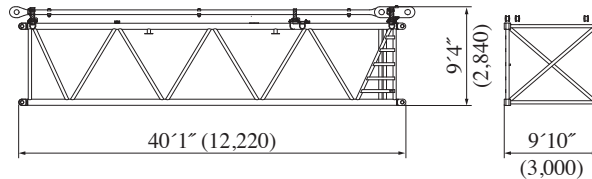
20 ft Boom Insert

With 20 ft guy line (link) x 4
Weight: 8,245 lbs



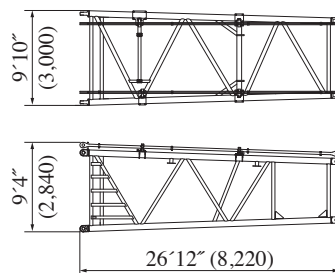
40 ft Boom Insert

With 40 ft guy line (link) x 4
Weight: 14,859 lbs



26 ft Tapered Boom

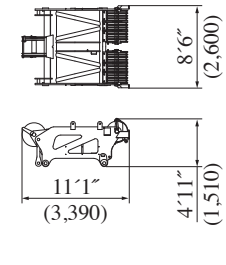
With 26 ft guy line (link) x 2
Weight: 11,486 lbs



Dimensions: ft-inch Weight: lbs

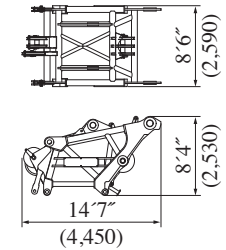
Heavy Boom Tip

Weight: 10,825 lbs



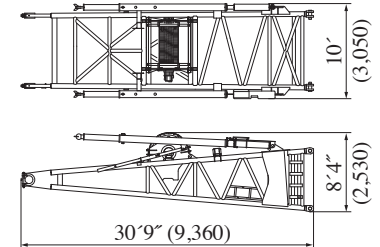
Luffing Boom Tip

Weight: 12,169 lbs



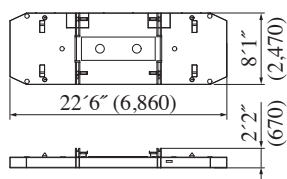
30 ft Mast Base

Weight: 30,203 lbs



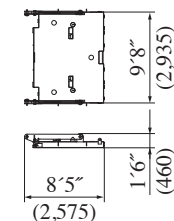
Base Counterweight

Weight: 44,092 lbs



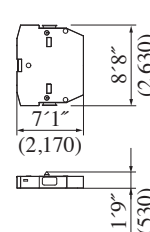
Base Carbody Weight (5 metric ton) (with link)

Weight: 11,905 lbs



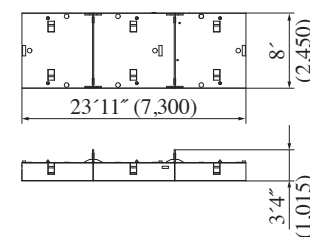
Counterweight (L/R) Carbody Weight (F/R)

Weight: 22,046 lbs



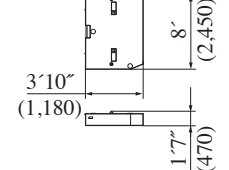
Base Pallet Weight

Weight: 20,503 lbs



Pallet Weight

Weight: 22,046 lbs

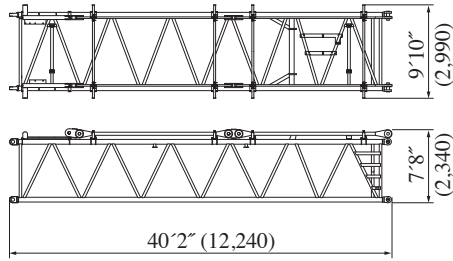


SL6000G

Dimensions: ft-inch Weight: lbs

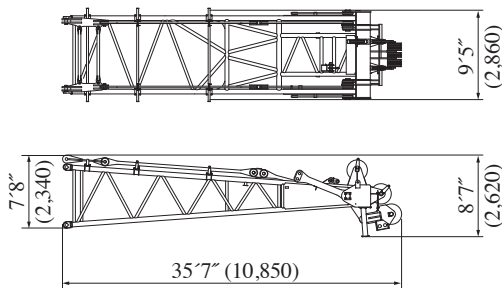
40 ft Mast Insert

With guy line
Weight: 12,456 lbs



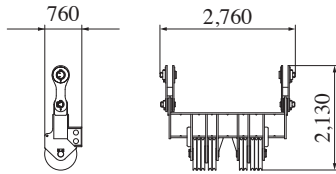
30 ft Mast top

With guy line
Weight: 22,222 lbs



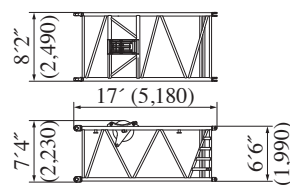
Hanger sheave

Weight: 2,010 kg



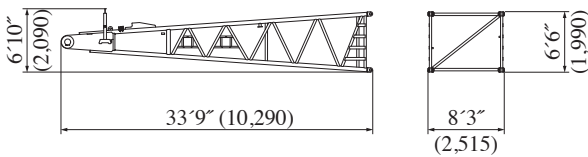
16 ft boom insert for long boom

Weight: 3,946 lbs



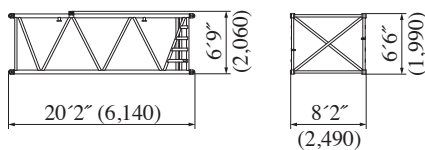
32.8 ft Jib Base

Weight: 8,333 lbs



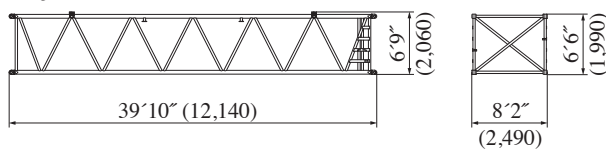
20 ft Jib Insert

Weight: 3,241 lbs



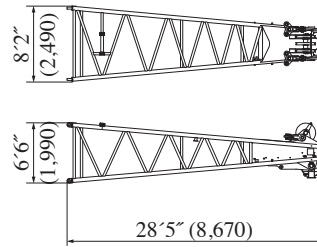
40 ft Jib Insert

Weight: 5,908 lbs



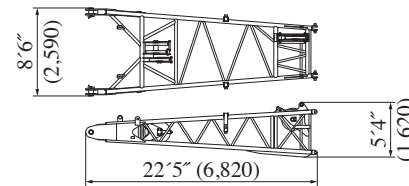
26 ft Jib Top

Weight: 8,135 lbs



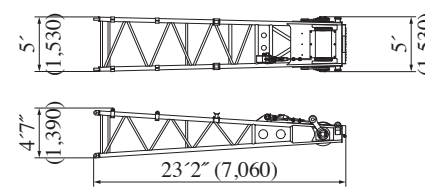
Rear strut base

Weight: 4,387 lbs



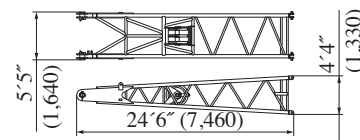
Rear strut tip

Weight: 5,313 lbs



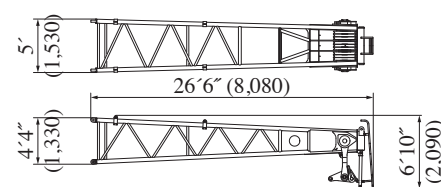
Front strut base

Weight: 4,056 lbs



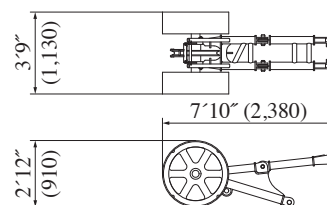
Front strut top

Weight: 6,702 lbs



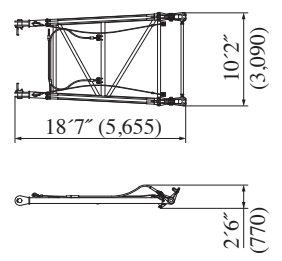
Auxiliary sheave

Weight: 1,433 lbs



Strut (For Heavy Fixed Jib)

With guy cable
Weight: 3,329 lbs



Note: This catalog may contain photographs of machines with specifications, attachments and optional equipment not certified for operation in your country. Please consult KOBELCO for those items you may require. Due to our policy of continual product improvements all designs and specifications are subject to change without advance notice.

Copyright by KOBELCO CRANES CO., LTD. No part of this catalog may be reproduced in any manner without notice.

KOBELCO CRANES CO., LTD.

17-1, Higashigotanda 2-chome, Shinagawa-ku, Tokyo 141-8626 JAPAN

Tel: +81-3-5789-2130 Fax: +81-3-5789-3372

URL: <http://www.kobelco-cranes.com/>

Inquiries To :

KOBELCO CRANES NORTH AMERICA, INC.

10845 Train Court, Houston, Texas 77041, USA

Tel: +1-713-856-5755 Fax: +1-713-856-9072

URL: <http://www.kobelcocranesnorthamerica.com/>