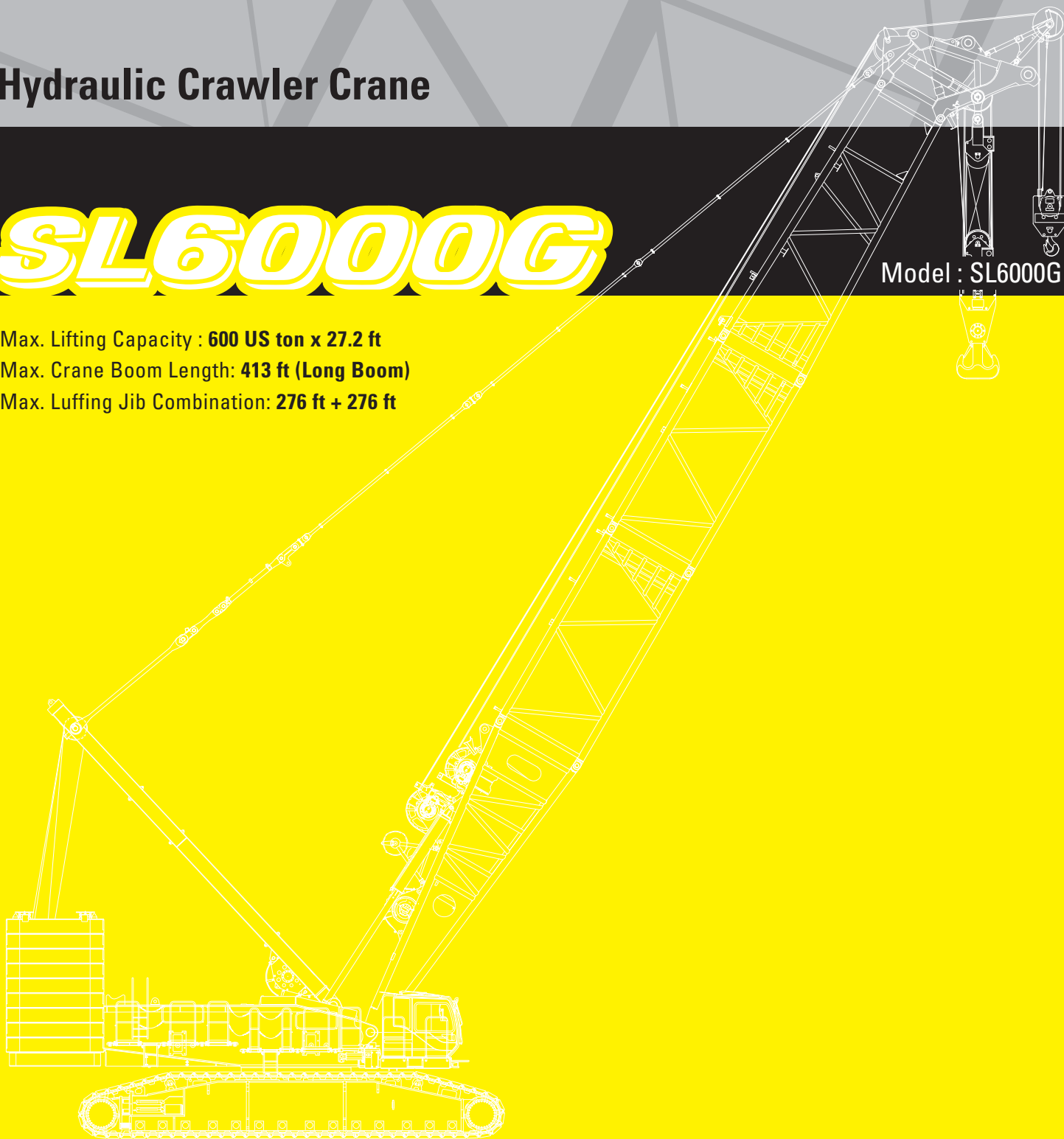


# Hydraulic Crawler Crane

# SL6000G

Model : SL6000G

Max. Lifting Capacity : **600 US ton x 27.2 ft**  
Max. Crane Boom Length: **413 ft (Long Boom)**  
Max. Luffing Jib Combination: **276 ft + 276 ft**



# KOBELCO

# CONFIGURATION








STD Heavy Duty Crane Boom

STD Luffing Boom

STD Long Boom

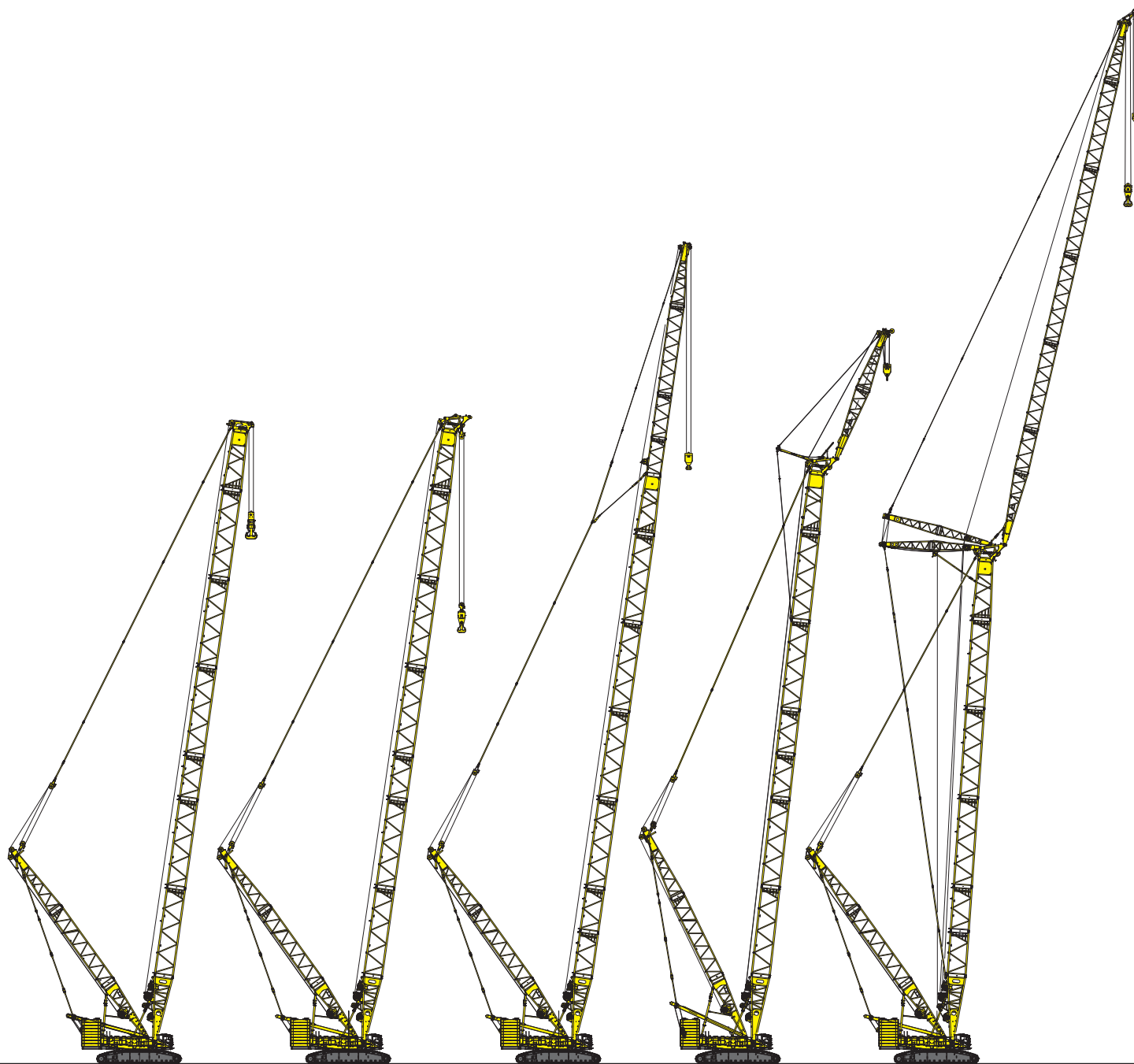
STD Heavy Fixed Jib (Type A)

STD Luffing Jib






STD	Heavy Duty Crane Boom	Luffing Boom	Long Boom	Heavy Fixed Jib (Type A)	Luffing Jib
					
Max. Lifting Capacity:	992,000 lbs x 21.9 ft	661,300 lbs x 32 ft	216,000 lbs x 55 ft	231,500 lbs x 65 ft	395,200 lbs x 50 ft
Max. Boom Length:	276 ft	276 ft	354 ft	—	—
Max. Combination:	—	—	—	256 ft + 59 ft	197 ft + 236 ft

# HYDRAULIC CRAWLER CRANE SL6000G

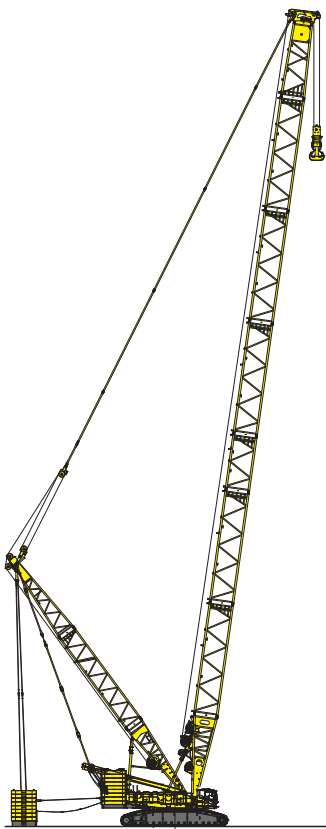
The following abbreviations are used throughout this catalog:  
 STD: Standard HL: Heavy Lift SHL: Super Heavy Lift



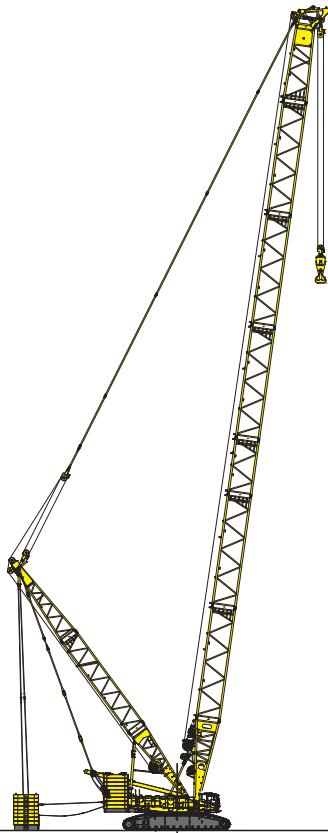
HL Heavy Duty Crane Boom    HL Luffing Boom    HL Long Boom    HL Fixed Jib (Type B1)    HL Luffing Jib

HL	Heavy Duty Crane Boom	Luffing Boom	Long Boom	Fixed Jib (Type B1)	Luffing Jib
					
Max. Lifting Capacity:	815,600 lbs x 27.2 ft	661,300 lbs x 28 ft	216,000 lbs x 65 ft	264,600 lbs x 65 ft	440,900 lbs x 47.2 ft
Max. Boom Length:	276 ft	276 ft	354 ft	—	—
Max. Combination:	—	—	—	256 ft + 59 ft	217 ft + 236 ft

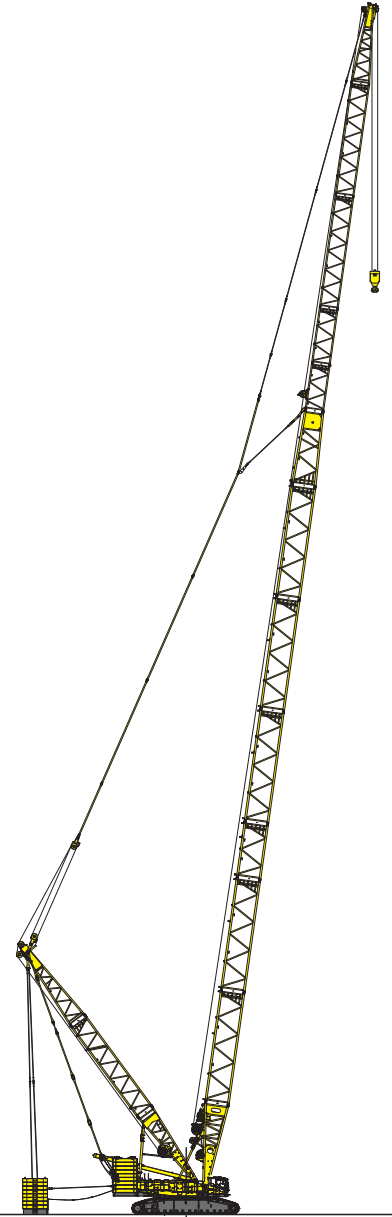
# CONFIGURATION







SHL Heavy Duty Crane Boom



SHL Luffing Boom



SHL Long Boom

SHL	Heavy Duty Crane Boom	Luffing Boom	Long Boom
			
Max. Lifting Capacity:	1,212,500 lbs x 27.2 ft	661,300 lbs x 65 ft	216,000 lbs x 95 ft
Max. Boom Length:	276 ft	276 ft	413 ft
Max. Combination:	—	—	—