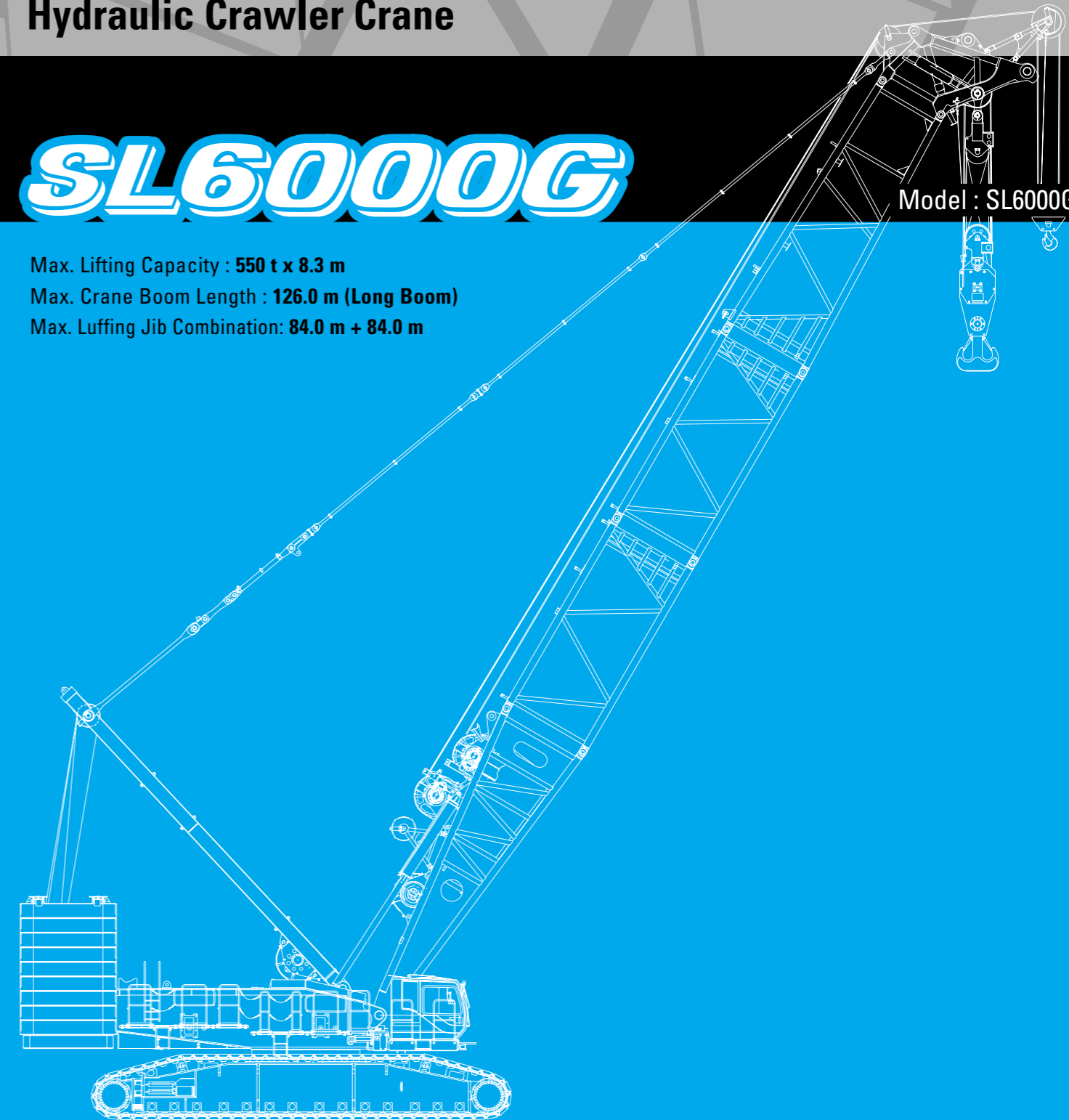


Hydraulic Crawler Crane

SL6000G

Model : SL6000G

Max. Lifting Capacity : 550 t x 8.3 m
Max. Crane Boom Length : 126.0 m (Long Boom)
Max. Luffing Jib Combination: 84.0 m + 84.0 m



Note: This catalog may contain photographs of machines with specifications, attachments and optional equipment not certified for operation in your country. Please consult KOBELCO for those items you may require. Due to our policy of continual product improvements all designs and specifications are subject to change without advance notice.

Copyright by KOBELCO CRANES CO., LTD. No part of this catalog may be reproduced in any manner without notice.



KOBELCO CRANES CO., LTD.

17-1, Higashigotanda 2-chome, Shinagawa-ku, Tokyo 141-8626 JAPAN
Tel: +81-3-5789-2130 Fax: +81-3-5789-3372

URL: <http://www.kobelco-cranes.com/>

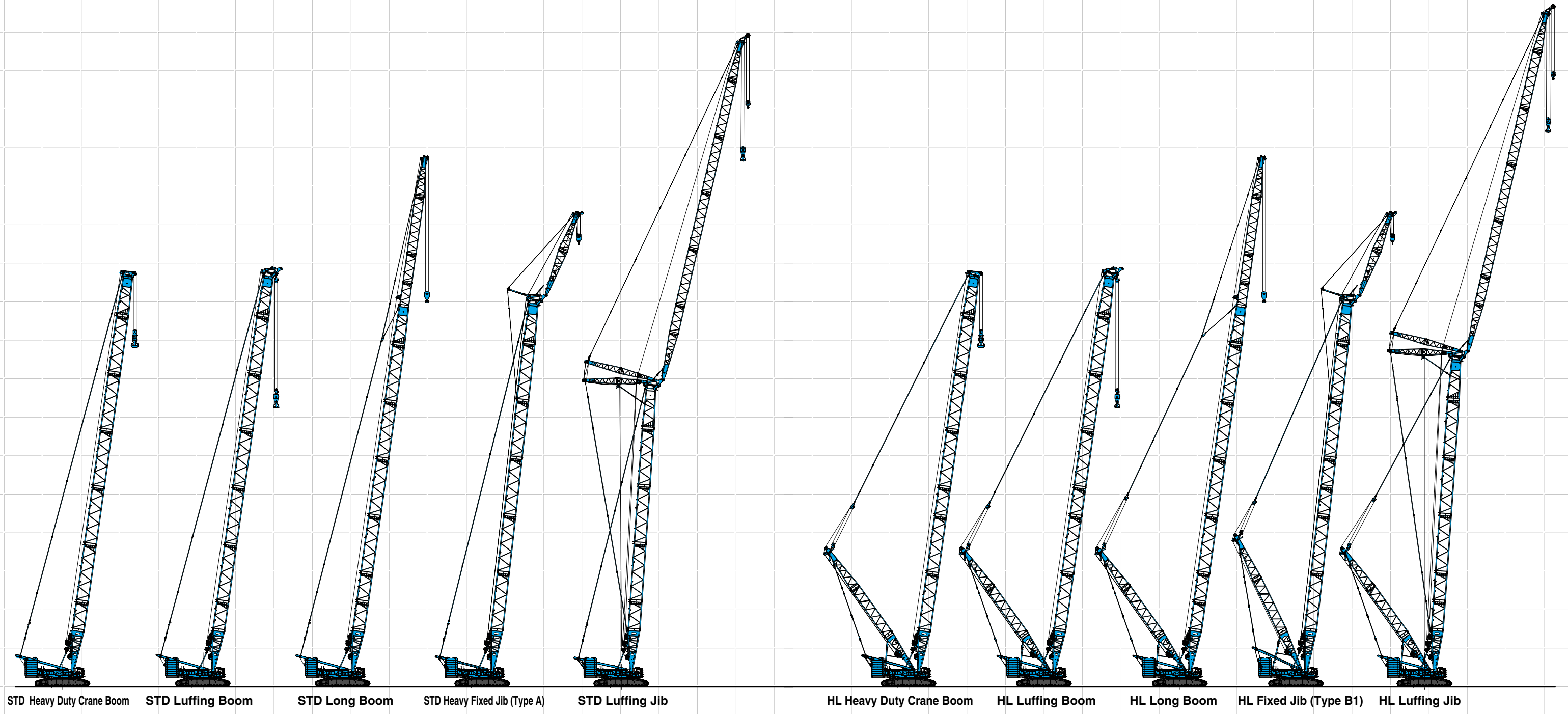
Inquiries To:

KOBELCO

CONFIGURATION

HYDRAULIC CRAWLER CRANE SL6000G

The following abbreviations are used throughout this catalog:
STD: Standard HL: Heavy Lift SHL: Super Heavy Lift



STD Heavy Duty Crane Boom STD Luffing Boom STD Long Boom STD Heavy Fixed Jib (Type A) STD Luffing Jib HL Heavy Duty Crane Boom HL Luffing Boom HL Long Boom HL Fixed Jib (Type B1) HL Luffing Jib

STD	Heavy Duty Crane Boom	Luffing Boom	Long Boom	Heavy Fixed Jib (Type A)	Luffing Jib
Max. Lifting Capacity:	450 t x 6.7 m	300 t x 10.0 m	98 t x 18.0 m	105 t x 20.0 m	195.1 t x 14.0 m
Max. Boom Length:	84 m	84 m	108 m	–	–
Max. Combination:	–	–	–	78 m + 18 m	60 m + 72 m

HL	Heavy Duty Crane Boom	Luffing Boom	Long Boom	Fixed Jib (Type B1)	Luffing Jib
Max. Lifting Capacity:	370 t x 8.3 m	300 t x 9.3 m	98 t x 20.0 m	120 t x 20.0 m	200 t x 14.4 m
Max. Boom Length:	84 m	84 m	108 m	–	–
Max. Combination:	–	–	–	78 m + 18 m	66 m + 72 m