

KOMATSU

D51EX-24 **D51PX-24**

EU Stage IV Engine

CRAWLER DOZER

PRELIMINARY

D51



ENGINE POWER

99 kW / 133 HP @ 2.200 rpm

OPERATING WEIGHT

D51EX-24: 13.760 kg
D51PX-24: 14.180 kg

BLADE CAPACITY

D51EX-24: 2,7 - 2,9 m³
D51PX-24: 2,9 - 3,35 m³

Walk-Around

OUTSTANDING PRODUCTIVITY & FUEL ECONOMY

**Up to 10% less fuel consumption
with new engine and optimised
hydrostatic pump control
technology (compared with D51-22)**

Powerful and Environmentally Friendly

- NEW** • Low consumption EU Stage IV engine
- Optimised Hydrostatic Transmission (HST) control system
- NEW** • Adjustable Eco-gauge and auto idle stop
- Hydrostatic cooling fan with cleaning mode
- NEW** • 100% passive regeneration and requires no DPF

Optimised Work Equipment

- INPAT blade with adjustable pitch
- Multishank parallelogram ripper



D51EX/PX-24

First-Class Operator Comfort

- Super-slant nose design for excellent blade visibility
- Integrated rear-view camera
- Fully adjustable air-suspended seat
- High capacity air conditioning

State-of-the-Art Controls

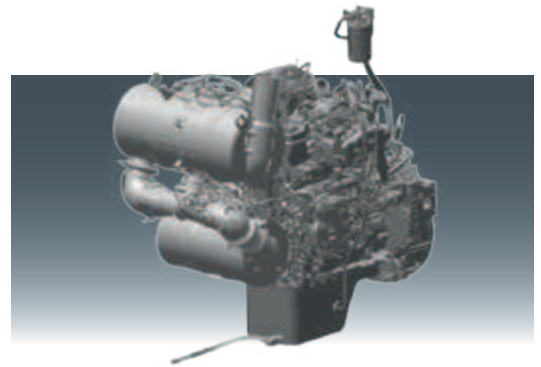
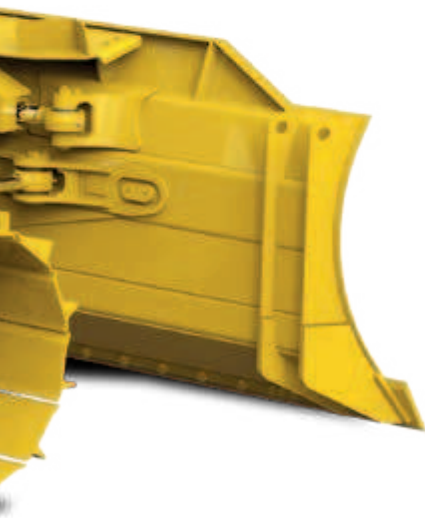
- Extremely maneuverable hydrostatic drive
- Variable speed selection or conventional quick shift
- Palm Command Control System (PCCS)
- Large multifunctional monitor

Reliability & Maintenance

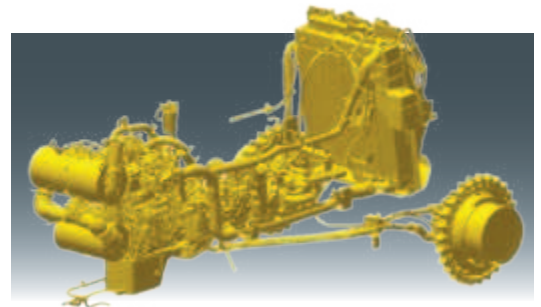
- Multifunctional monitor with troubleshooting function
- Sturdy, rugged design
- Low-drive "PLUS" undercarriage

KOMTRAX™

- Increased operational data and fuel savings
- Integrated communication antenna



New, low consumption Komatsu SAA4D107-3 engine for greatly increased productivity.



The optimised Hydrostatic Transmission (HST) control system provides full power to both tracks during turns or counter-rotation and makes the D51-24 extremely maneuverable.



Maximum operator comfort and an excellent view on the blade due to the super-slant nose design.



Eco gauge, eco guidance and the new auto idle stop help to further reduce consumption.



Complimentary maintenance program for customers

ENGINE

Model	Komatsu SAA4D107-3
Type	Common rail direct injection, water-cooled, emissionised, turbocharged, after-cooled diesel
Engine power	
at rated engine speed	2.200 rpm
ISO 14396	99 kW/133 HP
ISO 9249 (net engine power)	98 kW/131 HP
No. of cylinders	4
Bore x stroke	107 x 124 mm
Displacement	4,5 l
Fan drive type	Hydraulic, reversible
Engine emissions	Fully complies with EU Stage IV exhaust emission regulations

UNDERCARRIAGE

Suspension	Oscillating equaliser bar and pivot shaft
Tracks	PLUS link assembly
Min. turning radius	
D51EX-24	2,4 m
D51PX-24	2,6 m

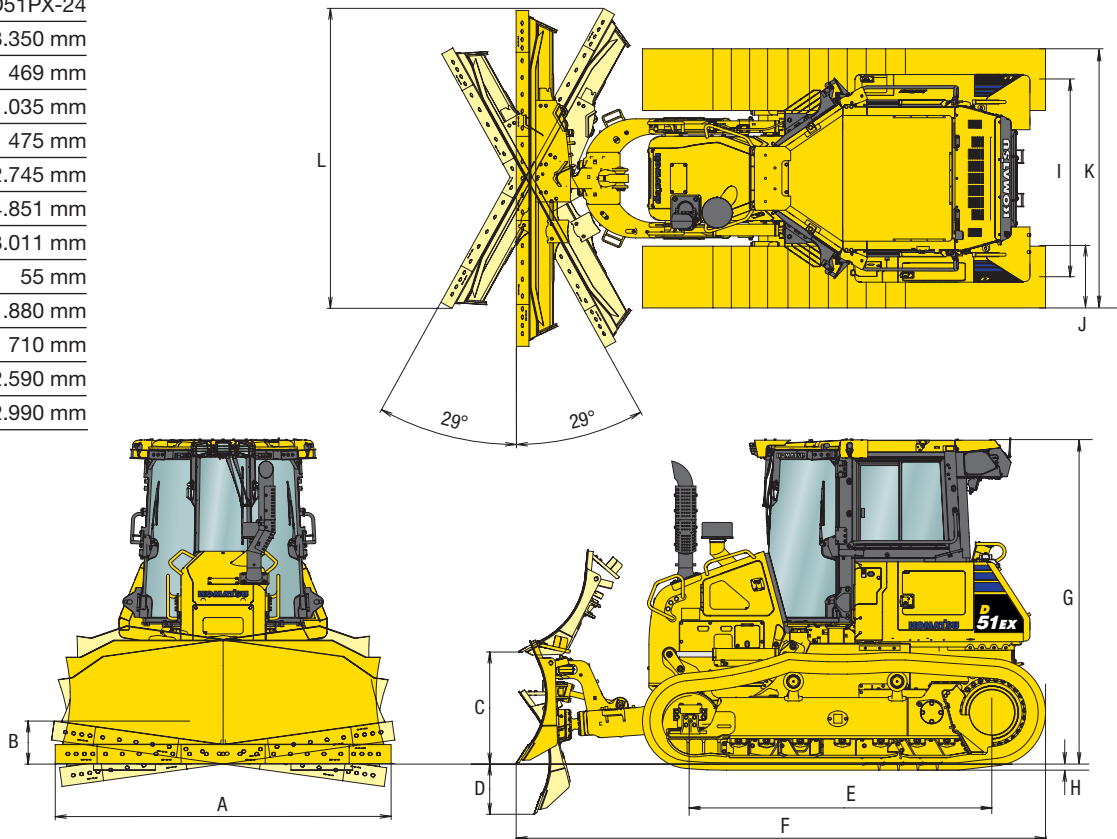
HYDROSTATIC TRANSMISSION (HST)

Speed ranges (forwards/backwards)	3/3
Max. travel speeds in variable mode (forwards/backwards)	0 - 9 km/h

DIMENSIONS

	D51EX-24	D51PX-24
A	3.350 mm	3.350 mm
B	469 mm	469 mm
C	1.010 mm	1.035 mm
D	460 mm	475 mm
E	2.745 mm	2.745 mm
F	4.800 mm	4.851 mm
G	3.011 mm	3.011 mm
H	55 mm	55 mm
I	1.790 mm	1.880 mm
J	560 mm	710 mm
K	2.350 mm	2.590 mm
L	2.990 mm	2.990 mm

Ground clearance:
390 mm (+ grouser height)



DOZER EQUIPMENT

	Overall length with dozer	Blade width x height	Maximum lift above ground	Maximum drop below ground	Maximum tilt adjustment	Blade angle
2,7 m³ PAT blade (EX) (option)	4.800 mm	3.045 x 1.120 mm	1.010 mm	460 mm	425 mm	29°
2,9 m³ PAT blade (EX) (standard)	4.800 mm	3.350 x 1.120 mm	1.010 mm	460 mm	469 mm	29°
2,9 m³ PAT blade (PX) (option)	4.800 mm	3.350 x 1.120 mm	1.010 mm	460 mm	469 mm	29°
3,35 m³ PAT blade (PX) (standard)	4.851 mm	3.350 x 1.170 mm	1.035 mm	475 mm	469 mm	29°

Blade capacities are based on the SAE recommended practice J1265.