

KOMATSU[®]

PC210LC-10
PC240LC-10
PC290LC-10
PC360LC-10
PC390LC-10
PC490LC-10

Hydraulic Excavator Attachments

FRONT LENGTHS

50' – 65' 15.2 – 19.8 m

Super Long Front



PHOTOS MAY INCLUDE OPTIONAL EQUIPMENT

Super
Long Front

WALK-AROUND

Super Long Front



Photos may include optional equipment

Super Long Front Hydraulic Excavator Attachments

FRONT LENGTHS

50' – 65' 15.2 – 19.8 m



SUPER LONG FRONT ATTACHMENTS

Hydraulic Excavator Attachments

PC210LC-10
PC240LC-10
PC290LC-10

PC360LC-10
PC390LC-10
PC490LC-10

Komatsu Super Long Front Arrangements

are designed and built from the frame up to handle heavy duty production demands. This arrangement includes the base machine with additional factory installed counterweight and frame reinforcement package, optimized hydraulics and a long reach front designed to work with each specific Komatsu model manufactured by Young Corporation. This provides the best combination of machine balance, speed and durability maximizing productivity and reliability.

For Use In

- **Industrial**
 - Waste pond and pit rehabilitation in industrial plants
 - Settling pond rehabilitation in mills and plants
- **Governmental**
 - River and creek bank maintenance and stabilization
 - Dredging of waterways
 - Highway landscaping and sloping
 - Irrigation and drainage ditch maintenance
- **Construction**
 - Dredging of bridge foundations
 - Cofferdam construction
 - Slurry wall construction in light soils
- **Mining**
 - Waterway maintenance
 - Slurry and settling pond maintenance

Arrangement Features

- Extends operating range and utility of the excavator
- Designed for long-life operation and performance
- Arm tucks under boom for lowest possible transport height without disassembly
- Large selection of ditch-cleaning and general purpose buckets
- Functions and operations are identical to a standard excavator
- Komatsu-designed and engineered base unit using all Komatsu components

Boom and Stick Features

- Unique baffling for strength
- Thermal stress relief
- Hardened steel, nickel plated pins for corrosion and wear resistance
- Cast power link for increased durability
- Sealed hardened bushing for long life
- Hardened stick tip for reduced wear

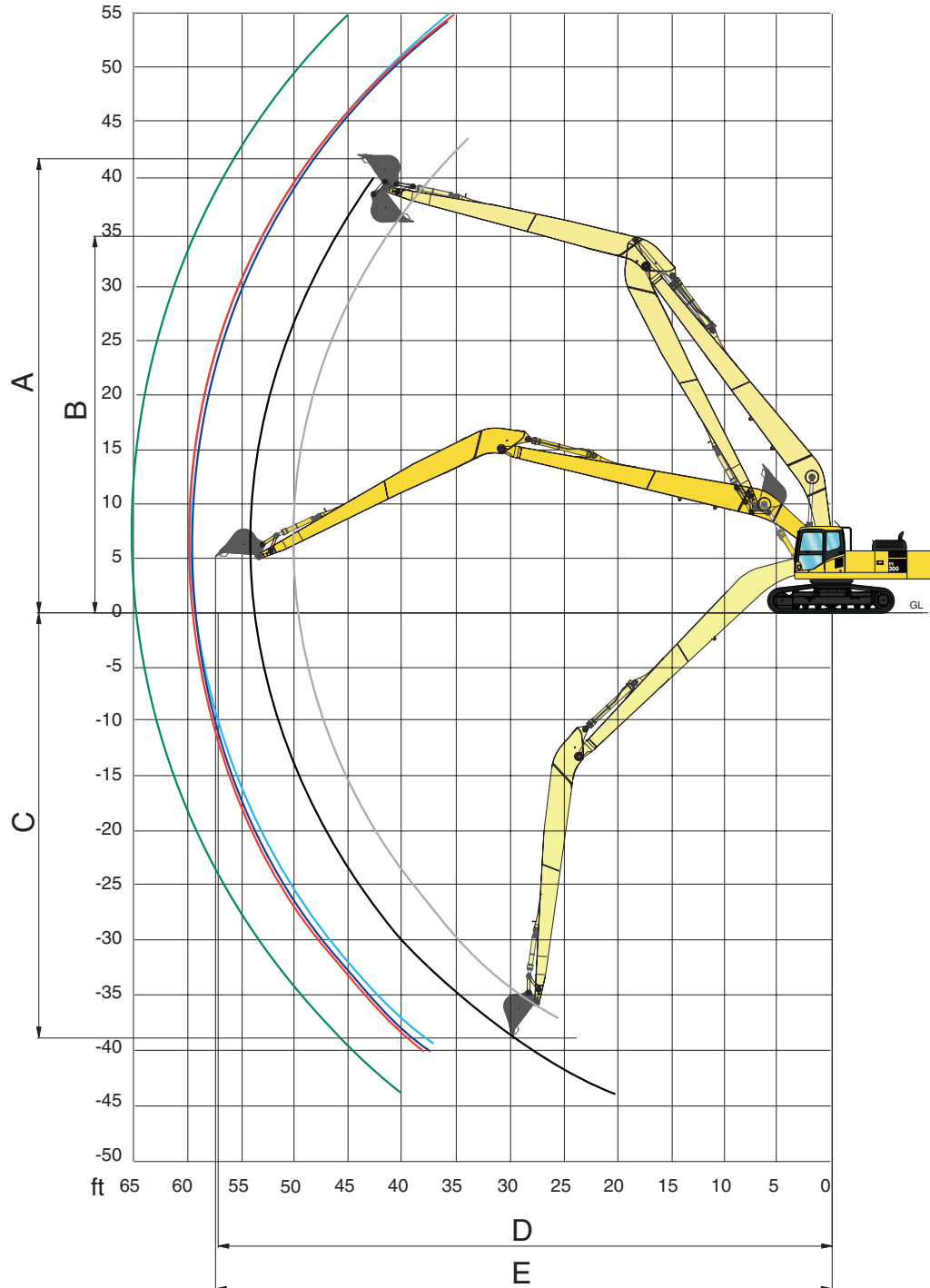
KOMTRAX®

Komtrax equipped machines can send location, SMR and operation maps to a secure website utilizing wireless technology. Machines also relay error codes, cautions, maintenance items, fuel levels, and much more.

SPECIFICATIONS



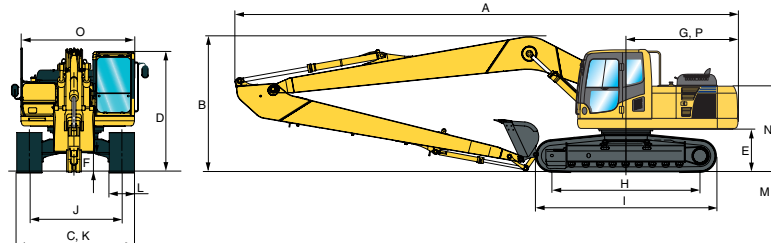
WORKING RANGES



	Arm	PC210LC-10	PC240LC-10	PC240LC-10	PC290LC-10	PC360LC-10	PC390LC-10	PC490LC-10
A	Max. digging height	13564 mm 44'6"	13106 mm 43'0"	17247 mm 56'7"	16891 mm 55'5"	16383 mm 53'9"	16586 mm 54'5"	16662 mm 54'8"
B	Max. dumping height	11836 mm 38'10"	11430 mm 37'6"	15545 mm 51'0"	15088 mm 49'6"	14173 mm 46'6"	14376 mm 47'2"	14148 mm 46'5"
C	Max. digging depth	11506 mm 37'9"	13411 mm 44'0"	13005 mm 42'8"	12624 mm 41'5"	12446 mm 40'10"	12268 mm 40'3"	14072 mm 46'2"
D	Max. digging reach at ground level	15138 mm 49'8"	16586 mm 54'5"	18212 mm 59'9"	18186 mm 59'8"	18110 mm 59'5"	18110 mm 59'5"	19761 mm 64'10"
E	Max. digging reach	15240 mm 50'0"	16764 mm 55'0"	18364 mm 60'3"	18288 mm 60'0"	18288 mm 60'0"	18288 mm 60'0"	19812 mm 65'0"



TRANSPORTATION DIMENSIONS



	PC210LC-10	PC240LC-10	PC290LC-10	PC360LC-10	PC390LC-10	PC490LC-10 F/G	PC490LC-10 V/G
Front Length	15240 mm 50'	16764 mm 55'	18288 mm 60'	18288 mm 60'	18288 mm 60'	19812 mm 65'	19812 mm 65'
A Overall length*	12370 mm 40'7"	13395 mm 43'11" **	14500 mm 47'7"	14910 mm 48'11"	14880 mm 48'10"	16130 mm 52'11"	16130 mm 52'11"
B Transport height (to top of boom)**	3175 mm 10'5"	3200 mm 10'6" ***	3429 mm 11'3"	3353 mm 11'0"	3327 mm 10'11"	3632 mm 11'11"	3632 mm 11'11"
C Overall width	3180 mm 10'5"	3380 mm 11'1"	3390 mm 11'2"	3440 mm 11'4"	3640 mm 11'11"	3640 mm 11'11"	3785 mm 12'5"
D Overall height (to top of cab)	3040 mm 10'0"	3055 mm 10'0"	3175 mm 10'5"	3130 mm 10'3"	3200 mm 10'6"	3265 mm 10'9"	3265 mm 10'9"
E Ground clearance (counterweight)	1085 mm 3'7"	1100 mm 3'7"	1215 mm 4'0"	1185 mm 3'11"	1320 mm 4'4"	1320 mm 4'4"	1320 mm 4'4"
F Ground clearance (minimum)	440 mm 1'5"	412 mm 1'4"	498 mm 1'8"	500 mm 1'8"	550 mm 1'10"	462 mm 1'6"	462 mm 1'6"
G Tail swing radius	2750 mm 9'0"	2900 mm 9'6"	2940 mm 9'8"	3450 mm 11'4"	3450 mm 11'4"	3645 mm 12'0"	3645 mm 12'0"
H Track length on ground	3655 mm 12'0"	3845 mm 12'7"	4030 mm 13'3"	4030 mm 13'3"	4350 mm 14'3"	4350 mm 14'3"	4350 mm 14'3"
I Track length	4450 mm 14'7"	4640 mm 15'3"	4955 mm 16'3"	4955 mm 16'3"	5355 mm 17'7"	5355 mm 17'7"	5355 mm 17'7"
J Track gauge	2380 mm 7'10"	2580 mm 8'6"	2590 mm 8'6"	2590 mm 8'6"	2740 mm 9'0"	2740 mm 9'0"	2885 mm 9'6"
K Width of crawler	3180 mm 10'5"	3380 mm 11'1"	3390 mm 11'2"	3440 mm 11'4"	3640 mm 11'11"	3640 mm 11'11"	3785 mm 12'5"
L Shoe width	800 mm 31.5"	800 mm 31.5"	800 mm 31.5"	850 mm 33.5"	900 mm 35.5"	900 mm 35.5"	900 mm 35.5"
M Grouser height	25 mm 1.0"	25 mm 1.0"	36 mm 1.4"	36 mm 1.4"	37 mm 1.5"	37 mm 1.5"	37 mm 1.5"
N Machine cab height	2095 mm 6'10"	2110 mm 6'11"	2225 mm 7'4"	2580 mm 8'6"	2688 mm 8'10"	2885 mm 9'6"	2885 mm 9'6"
O Machine cab width	2710 mm 8'11"	2710 mm 8'11"	2710 mm 8'11"	2995 mm 9'10"	2995 mm 9'10"	2995 mm 9'10"	2995 mm 9'10"
P Distance, swing center to rear end	2710 mm 8'11"	2905 mm 9'6"	2905 mm 9'6"	3405 mm 11'2"	3405 mm 11'2"	3605 mm 11'10"	3605 mm 11'10"

*60' A 47'7" **60' B 11'0"



RECOMMENDED BUCKETS

Model	Bucket			
	Standard Width	Bucket Volume	Bucket Weight	Bucket Pin Class
PC210LC-10	1.22 m 48"	0.46 m ³ 0.6 yd³	288 kg 635 lb	PC138
PC240LC-10	1.52 m 60"	0.57 m ³ 0.75 yd³	324 kg 714 lb	PC138
PC290LC-10	1.52 m 60"	0.57 m ³ 0.75 yd³	324 kg 714 lb	PC138
PC360LC-10	1.52 m 60"	0.96 m ³ 1.25 yd³	618 kg 1363 lb	PC200
PC390LC-10	1.52 m 60"	0.96 m ³ 1.25 yd³	618 kg 1363 lb	PC200
PC490LC-10	1.52 m 60"	0.96 m ³ 1.25 yd³	618 kg 1363 lb	PC200



SHIPPING WEIGHT (APPROXIMATE)

Model	Front Length	Boom Weight	Arm Weight
PC210LC-10	15240 mm 50'	2926 kg 6,451 lb	1570 kg 3,461 lb
PC240LC-10	16764 mm 55'	3075 kg 6,779 lb	1622 kg 3,575 lb
PC240LC-10	18288 mm 60'	2614 kg 5,762 lb	1491 kg 3,288 lb
PC290LC-10	18288 mm 60'	3343 kg 7,369 lb	1654 kg 3,647 lb
PC360LC-10	18288 mm 60'	4546 kg 10,021 lb	2423 kg 5,342 lb
PC390LC-10	18288 mm 60'	4546 kg 10,021 lb	2423 kg 5,342 lb
PC490LC-10	19812 mm 65'	5795 kg 12,776 lb	3001 kg 6,617 lb



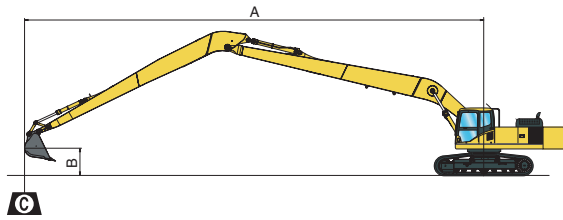
OPERATING WEIGHT (APPROXIMATE) (LESS BUCKET)

Model	Shoe	Operating Weight
PC210LC-10	700 mm 28"	23927 kg 52,751 lb
	800 mm 31.5"	24207 kg 53,368 lb
PC240LC-10	700 mm 28"	26255 kg 57,882 lb
	800 mm 31.5"	26545 kg 58,521 lb
PC290LC-10	700 mm 28"	30582 kg 67,422 lb
	800 mm 31.5"	30962 kg 68,260 lb
	850 mm 33.5"	31342 kg 69,098 lb
PC360LC-10	700 mm 28"	35960 kg 79,279 lb
	800 mm 31.5"	36340 kg 80,117 lb
	850 mm 33.5"	36717 kg 80,947 lb
PC390LC-10	700 mm 28"	40516 kg 89,322 lb
	800 mm 31.5"	41019 kg 90,431 lb
	900 mm 35.5"	41522 kg 91,540 lb
PC490LC-10 Fixed Gauge	700 mm 28"	50157 kg 110,578 lb
	800 mm 31.5"	50648 kg 111,659 lb
PC490LC-10 Variable Gauge	900 mm 35.5"	51138 kg 112,739 lb
	700 mm 28"	51232 kg 112,948 lb
PC490LC-10 Variable Gauge	800 mm 31.5"	51695 kg 113,966 lb
	900 mm 35.5"	52213 kg 115,109 lb

LIFT CAPACITIES



PC210LC-10 LIFTING CAPACITY



- A: Reach from swing center
- B: Bucket hook height
- C: Lifting capacity
- Cf: Rating over front
- Cs: Rating over side

Conditions :

- Shoe: 700 mm 28"
- Counterweight: 4728 kg 10,423 lbs

Front: 15.2 m 50'

Unit: kg lb

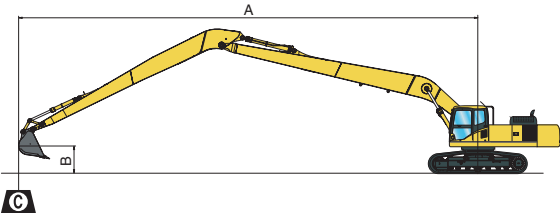
B \ A	4.6 m 15'		6.1 m 20'		7.6 m 25'		9.1 m 30'		10.7 m 35'		12.2 m 40'		13.7 m 45'	
	Cf	Cs	Cf	Cs	Cf	Cs	Cf	Cs	Cf	Cs	Cf	Cs	Cf	Cs
10.7 m 35'									* 200	* 200				
									* 400	* 400				
9.1 m 30'									* 2400	* 2400	* 2500	1800		
									* 5,200	* 5,200	* 5,400	4,000		
7.6 m 25'									* 2500	* 2500	* 2500	1800		
									* 5,400	* 5,400	* 5,400	4,000		
6.1 m 20'							* 2700	* 2700	* 2600	2400	* 2500	1800		
							* 5,900	* 5,900	* 5,700	5,200	* 5,600	3,900		
4.6 m 15'					* 3300	3300	* 3000	3000	* 2800	2200	* 2700	1700	2100	1300
					* 7,300	7,300	* 6,600	6,500	* 6,200	4,900	* 5,900	3,700	4,600	2,800
3.0 m 10'	* 6300	* 6300	* 4700	* 4700	* 3900	3600	* 3400	2700	* 3100	2000	2500	1600	2000	1200
	* 13,900	* 13,900	* 10,400	* 10,400	* 8,600	8,000	* 7,500	5,900	* 6,800	4,500	5,600	3,500	4,500	2,600
1.5 m 5'	* 8100	6500	* 5800	4500	* 4500	3200	* 3800	2500	3000	1900	2500	1500	2000	1100
	* 17,800	14,400	* 12,700	9,800	* 10,000	7,100	* 8,400	5,400	6,700	4,100	5,400	3,200	4,300	2,500
0 m 0'	* 4900	* 4900	* 6600	3900	4800	2900	3600	2200	2900	1700	2300	1400	1900	1100
	* 10,800	* 10,800	* 14,500	8,600	10,500	6,400	8,000	4,900	6,400	3,800	5,100	3,000	4,200	2,400
-1.5 m -5'	* 4500	* 4500	6200	3500	4500	2600	3500	2000	2800	1600	2200	1300	1900	1000
	* 10,000	* 10,000	13,600	7,800	9,900	5,800	7,600	4,500	6,100	3,500	4,900	2,800	4,100	2,300
-3.0 m -10'	* 4900	* 4900	6000	3400	4300	2500	3300	1900	2700	1500	2200	1200		
	* 10,800	* 10,800	13,200	7,400	9,500	5,400	7,300	4,200	5,900	3,300	4,800	2,700		
-4.6 m -15'	* 5600	* 5100	5900	3300	4300	2400	3300	1900	2600	1500	2200	1200		
	* 12,300	* 11,200	13,000	7,300	9,400	5,300	7,200	4,100	5,800	3,200	4,800	2,700		
-6.1 m -20'	* 6500	5200	6000	3400	4300	2400	3300	1900	2600	1500				
	* 14,400	11,500	13,100	7,400	9,400	5,300	7,200	4,100	5,800	3,300				
-7.6 m -25'	* 7800	5500	6100	3500	4400	2500	3400	2000						
	* 17,200	12,000	13,500	7,700	9,600	5,500	7,400	4,300						
-9.1 m -30'	* 7600	5800	* 6000	3700	4500	2700								
	* 16,800	12,800	* 13,100	8,200	10,000	5,900								

*Load is limited by hydraulic capacity rather than tipping. Ratings are based on ISO standard No. 10567. Rated loads do not exceed 87% of hydraulic lift capacity or 75% of tipping load.

LIFT CAPACITIES



PC290LC-10 LIFTING CAPACITY



- A: Reach from swing center
- B: Bucket hook height
- C: Lifting capacity
- Cf: Rating over front
- Cs: Rating over side

Conditions :

- Shoe: 800 mm **31.5"**
- Counterweight: 5750 kg **12,677 lbs**

Front: 18.3 m 60'

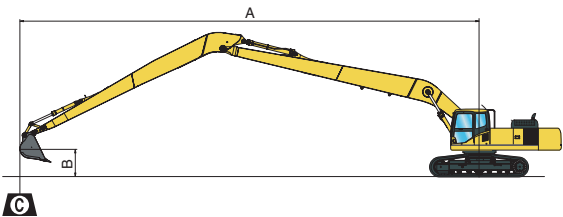
Unit: kg lb

B	A		3 m 10'		4.6 m 15'		6.1 m 20'		7.6 m 25'		9.1 m 30'		10.7 m 35'		12.2 m 40'		13.7 m 45'		15.2 m 50'		16.8 m 55'		
	Cf	Cs	Cf	Cs	Cf	Cs	Cf	Cs	Cf	Cs	Cf	Cs	Cf	Cs	Cf	Cs	Cf	Cs	Cf	Cs	Cf	Cs	
15.2 m 50'																							
13.7 m 45'															* 2800	* 2800							
12.2 m 40'															* 6,100	* 6,100							
10.7 m 35'															* 2700	* 2700	* 2700	2300					
9.1 m 30'															* 6,000	* 6,000	* 5,900	5,000					
7.6 m 25'															* 2700	* 2700	* 2600	2300					
6.1 m 20'															* 6,000	* 6,000	* 5,800	5,100					
4.6 m 15'															* 2800	* 2800	* 2600	2300	* 2500	1800			
3.0 m 10'															* 6,100	* 6,100	* 5,800	5,000	* 5,600	3,900			
1.5 m 5'															* 2900	2800	* 2700	2200	* 2600	1700			
0 m															* 3300	* 3300	* 3000	2700	* 2800	2100	* 2600	1700	2300 1300
-1.5 m															* 7,200	* 7,200	* 6,600	5,900	* 6,200	4,600	* 5,800	3,700	5,100 2,800
-3.0 m															* 3500	3200	* 3200	2500	* 2900	2000	* 2700	1600	2300 1200
-4.6 m															* 4600	* 4600	* 4000	* 4000	* 3500	3200	* 2500	* 2900	2000
-6.1 m															* 10,100	* 10,100	* 8,700	* 8,700	* 7,700	7,100	* 7,000	5,600	* 6,400
-7.6 m															* 7,200	* 7,200	* 6,600	5,900	* 6,200	4,600	* 5,800	3,700	5,100 2,800
-9.1 m															* 3500	3200	* 3200	2500	* 2900	2000	* 2700	1600	2300 1200
-10.7 m															* 4600	* 4600	* 4000	* 4000	* 3500	3200	* 2500	* 2900	2000
-12.2 m															* 10,100	* 10,100	* 8,700	* 8,700	* 7,700	7,100	* 7,000	5,600	* 6,400
15.2 m															* 3500	3200	* 3200	2500	* 2900	2000	* 2700	1600	2300 1200
13.7 m															* 4600	* 4600	* 4000	* 4000	* 3500	3200	* 2500	* 2900	2000
12.2 m															* 7,200	* 7,200	* 6,600	5,900	* 6,200	4,600	* 5,800	3,700	5,100 2,800
10.7 m															* 3500	3200	* 3200	2500	* 2900	2000	* 2700	1600	2300 1200
9.1 m															* 4600	* 4600	* 4000	* 4000	* 3500	3200	* 2500	* 2900	2000
7.6 m															* 10,100	* 10,100	* 8,700	* 8,700	* 7,700	7,100	* 7,000	5,600	* 6,400
6.1 m															* 7,200	* 7,200	* 6,600	5,900	* 6,200	4,600	* 5,800	3,700	5,100 2,800
4.6 m															* 3500	3200	* 3200	2500	* 2900	2000	* 2700	1600	2300 1200
3.0 m															* 4600	* 4600	* 4000	* 4000	* 3500	3200	* 2500	* 2900	2000
1.5 m															* 7,200	* 7,200	* 6,600	5,900	* 6,200	4,600	* 5,800	3,700	5,100 2,800
0 m															* 3500	3200	* 3200	2500	* 2900	2000	* 2700	1600	2300 1200
-1.5 m															* 4600	* 4600	* 4000	* 4000	* 3500	3200	* 2500	* 2900	2000
-3.0 m															* 7,200	* 7,200	* 6,600	5,900	* 6,200	4,600	* 5,800	3,700	5,100 2,800
-4.6 m															* 3500	3200	* 3200	2500	* 2900	2000	* 2700	1600	2300 1200
-6.1 m															* 4600	* 4600	* 4000	* 4000	* 3500	3200	* 2500	* 2900	2000
-7.6 m															* 7,200	* 7,200	* 6,600	5,900	* 6,200	4,600	* 5,800	3,700	5,100 2,800
-9.1 m															* 3500	3200	* 3200	2500	* 2900	2000	* 2700	1600	2300 1200
-10.7 m															* 4600	* 4600	* 4000	* 4000	* 3500	3200	* 2500	* 2900	2000
-12.2 m															* 7,200	* 7,200	* 6,600	5,900	* 6,200	4,600	* 5,800	3,700	5,100 2,800

*Load is limited by hydraulic capacity rather than tipping. Ratings are based on ISO standard No. 10567. Rated loads do not exceed 87% of hydraulic lift capacity or 75% of tipping load.



PC360LC-10 LIFTING CAPACITY



- A: Reach from swing center
 - B: Bucket hook height
 - C: Lifting capacity
 - Cf: Rating over front
 - Cs: Rating over side
- Conditions :
- Shoe: 850 mm **33.5"**
 - Counterweight: 8105 kg **17,868 lbs**

Front: 18.3 m 60'

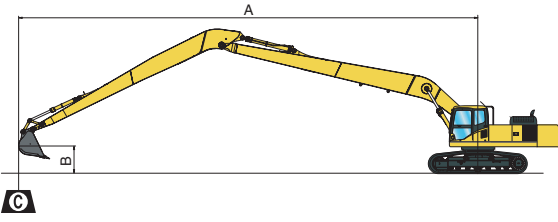
Unit: kg lb

B	A		4.6 m 15'		6.1 m 20'		7.6 m 25'		9.1 m 30'		10.7 m 35'		12.2 m 40'		13.7 m 45'		15.2 m 50'		16.8 m 55'		
	Cf	Cs	Cf	Cs	Cf	Cs	Cf	Cs	Cf	Cs	Cf	Cs	Cf	Cs	Cf	Cs	Cf	Cs	Cf	Cs	
12.2 m 40'													* 3000	* 3000							
10.7 m 35'													* 2900	* 2900	* 2800	* 2800					
9.1 m 30'													* 6,400	* 6,400	* 6,100	* 6,100					
7.6 m 25'													* 3000	* 3000	* 2800	* 2800	* 2300	2200			
6.1 m 20'													* 6,500	* 6,500	* 6,100	* 6,100	* 5,000	4,900			
4.6 m 15'					* 5000	* 5000	* 4300	* 4300	* 3700	* 3700	* 3300	3300	* 3000	3000	* 2800	2800	* 2600	2200			
3.0 m 10'	* 9900	* 9900	* 7100	* 7100	* 5600	* 5600	* 4600	* 4600	* 4000	3900	* 3500	3000	* 3100	2400	* 2800	1900	* 2500	1500			
1.5 m 5'	* 21,700	* 21,700	* 15,700	* 15,700	* 12,300	* 12,300	* 10,200	* 10,200	* 8,800	8,500	* 7,700	6,700	* 6,900	5,300	* 6,200	4,200	* 5,600	3,200			
0 m 0'	* 4800	* 4800	* 8000	* 8000	* 6100	5900	* 5000	4500	* 4200	3500	* 3600	2800	* 3200	2200	* 2900	1800	* 2600	1400			
-1.5 m -5'	* 10,600	* 10,600	* 17,600	* 17,600	* 13,500	13,000	* 11,000	9,900	* 9,300	7,800	* 8,000	6,200	* 7,100	4,900	* 6,300	3,900	* 5,700	3,100			
-3.0 m -10'	* 3100	* 3100	* 7800	7000	* 6500	5300	* 5300	4100	* 4400	3200	* 3800	2600	* 3300	2100	* 2900	1700	* 2600	1300			
-4.6 m -15'	* 6,800	* 6,800	* 17,200	15,500	* 14,400	11,600	* 11,600	9,000	* 9,700	7,100	* 8,300	5,700	* 7,300	4,600	* 6,400	3,700	* 5,700	2,900			
-6.1 m -20'	* 3000	* 3000	* 5900	5900	* 6800	4800	* 5500	3700	* 4500	3000	* 3900	2400	* 3400	2000	* 2900	1600					
-7.6 m -25'	* 6,500	* 6,500	* 13,000	13,000	* 14,900	10,500	* 12,000	8,200	* 10,000	6,500	* 8,500	5,300	* 7,400	4,300	* 6,400	3,500					
-9.1 m -30'	* 3300	* 3300	* 5600	5600	* 6900	4500	* 5500	3500	* 4600	2800	* 3900	2200	* 3300	1800	* 2900	1500					
-10.7 m -35'	* 7,200	* 7,200	* 12,300	12,300	* 15,100	9,900	* 12,100	7,700	* 10,100	6,100	* 8,500	4,900	* 7,300	4,000	* 6,300	3,300					
	* 3800	* 3800	* 5800	5800	* 6700	4300	* 5500	3300	* 4500	2600	* 3800	2100	* 3200	1800	* 2700	1500					
	* 8,300	* 8,300	* 12,800	12,800	* 14,800	9,500	* 12,000	7,300	* 10,000	5,800	* 8,400	4,700	* 7,100	3,900	* 6,000	3,300					
	* 4400	* 4400	* 6500	6000	* 6400	4300	* 5200	3300	* 4400	2600	* 3600	2100	* 3000	1800							
	* 9,700	* 9,700	* 14,200	13,100	* 14,000	9,400	* 11,500	7,200	* 9,600	5,700	* 8,000	4,700	* 6,700	3,900							
	* 5200	* 5200	* 7200	6100	* 5800	4300	* 4800	3300	* 4000	2600	* 3300	2100	* 2600	1800							
	* 11,400	* 11,400	* 15,800	13,400	* 12,800	9,500	* 10,600	7,300	* 8,800	5,800	* 7,300	4,700	* 5,800	4,000							
	* 6100	* 6100	* 6100	6100	* 5000	4500	* 4200	3400	* 3400	2700	* 2700	2200									
	* 13,500	* 13,500	* 13,400	13,400	* 11,100	9,800	* 9,200	7,500	* 7,500	6,000	* 6,000	4,900									
			* 4600	* 4600	* 3900	* 3900	* 3200	* 3200	* 2500	* 2500											
			* 10,200	* 10,200	* 8,500	* 8,500	* 7,000	* 7,000	* 5,400	* 5,400											

LIFT CAPACITIES



PC390LC-10 LIFTING CAPACITY



- A: Reach from swing center
- B: Bucket hook height
- C: Lifting capacity
- Cf: Rating over front
- Cs: Rating over side

Conditions :

- Shoe: 800 mm **31.5"**
- Counterweight: 8105 kg **17,868 lbs**

Front: 18.3 m 60'

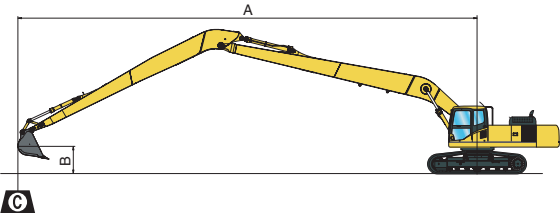
Unit: kg lb

B	A		3 m 10'		4.6 m 15'		6.1 m 20'		7.6 m 25'		9.1 m 30'		10.7 m 35'		12.2 m 40'		13.7 m 45'		15.2 m 50'		16.8 m 55'		
	Cf	Cs	Cf	Cs	Cf	Cs	Cf	Cs	Cf	Cs	Cf	Cs	Cf	Cs	Cf	Cs	Cf	Cs	Cf	Cs	Cf	Cs	
15.2 m 50'													* 300	* 300									
13.7 m 45'													* 600	* 600									
12.2 m 40'															* 2500	* 2500							
10.7 m 35'															* 5,500	* 5,500							
9.1 m 30'															* 3000	* 3000							
7.6 m 25'															* 6,500	* 6,500							
6.1 m 20'															* 2900	* 2900	* 2800	* 2800					
4.6 m 15'															* 6,400	* 6,400	* 6,100	* 6,100					
3.0 m 10'															* 3000	* 3000	* 2800	* 2800	* 2500	* 2500			
1.5 m 5'															* 6,500	* 6,500	* 6,100	* 6,100	* 5,400	* 5,400			
0 m															* 3100	* 3100	* 2900	* 2900	* 2700	* 2700			
-1.5 m															* 3400	* 3400	* 3200	* 3200	* 2900	* 2900			
-5'															* 7,400	* 7,400	* 6,800	* 6,800	* 6,300	* 6,300	* 5,800	* 5,800	
-10'															* 3500	* 3500	* 3200	* 3200	* 2900	* 2900			
-20'															* 8,800	* 8,800	* 7,800	* 7,800	* 7,000	* 7,000	* 6,400	* 6,400	
-30'															* 4000	* 4000	* 3800	* 3800	* 3400	* 3400	* 3000	* 3000	
-40'															* 8,800	* 8,800	* 8,300	* 8,300	* 7,400	* 7,400	* 6,700	* 6,700	
															* 3500	* 3500	* 3200	* 3200	* 2900	* 2900			
															* 3400	* 3400	* 3000	* 3000	* 2800	* 2800	* 2500	* 2500	
															* 7,400	* 7,400	* 6,800	* 6,800	* 6,300	* 6,300	* 5,800	* 5,800	
															* 3200	* 3200	* 2900	* 2900	* 2700	* 2700			
															* 4000	* 4000	* 3800	* 3800	* 3400	* 3400	* 3000	* 3000	
															* 8,800	* 8,800	* 8,300	* 8,300	* 7,400	* 7,400	* 6,700	* 6,700	
															* 5100	* 5100	* 4300	* 4300	* 3800	* 3800	* 3400	* 3400	
															* 11,300	* 11,300	* 9,500	* 9,500	* 8,300	* 8,300	* 7,400	* 7,400	
															* 5700	* 5700	* 4700	* 4700	* 4000	* 4000	* 3500	* 3500	
															* 10,100	* 10,100	* 8,400	* 8,400	* 7,300	* 7,300	* 6,000	* 6,000	
															* 6,700	* 6,700	* 6,200	* 6,200	* 5,600	* 5,600	* 5,000	* 5,000	
															* 10100	* 10100	* 7200	* 7200	* 5700	* 5700	* 4700	* 4700	
															* 22,200	* 22,200	* 15,900	* 15,900	* 12,500	* 12,500	* 10,300	* 10,300	
															* 4400	* 4400	* 8100	* 8100	* 6200	* 6200	* 5000	* 5000	
															* 9,700	* 9,700	* 17,800	* 17,800	* 13,600	* 13,600	* 11,100	* 11,100	
															* 3000	* 3000	* 7400	* 7400	* 6600	* 6600	* 6500	* 6500	
															* 6,700	* 6,700	* 16,200	* 16,200	* 14,500	* 14,500	* 14,400	* 11,700	
															* 3000	* 3000	* 5800	* 5800	* 6800	* 6100	* 5500	* 4800	
															* 6,500	* 6,500	* 12,800	* 12,800	* 15,000	* 13,400	* 12,000	* 10,500	
															* 3300	* 3300	* 5600	* 5600	* 6800	* 5800	* 5500	* 4500	
															* 7,300	* 7,300	* 12,300	* 12,300	* 15,000	* 12,800	* 12,100	* 9,900	
															* 3800	* 3800	* 5900	* 5900	* 6700	* 5600	* 5400	* 4400	
															* 8,400	* 8,400	* 13,000	* 13,000	* 14,700	* 12,400	* 11,900	* 9,600	
															* 4500	* 4500	* 6500	* 6500	* 6300	* 5600	* 5200	* 4300	
															* 9,900	* 9,900	* 14,400	* 14,400	* 13,900	* 12,400	* 11,400	* 9,500	
															* 5300	* 5300	* 7000	* 7000	* 5700	* 5700	* 4700	* 4400	
															* 11,600	* 11,600	* 15,500	* 15,500	* 12,600	* 12,500	* 10,400	* 9,600	
															* 6300	* 6300	* 6000	* 6000	* 4900	* 4900	* 4000	* 3300	
															* 13,800	* 13,800	* 13,100	* 13,100	* 10,800	* 10,800	* 8,900	* 8,900	
															* 3700	* 3700	* 3000	* 3000	* 2300	* 2300	* 2300	* 2300	
															* 8,100	* 8,100	* 6,600	* 6,600	* 5,100	* 5,100	* 5,100	* 5,100	

*Load is limited by hydraulic capacity rather than tipping. Ratings are based on ISO standard No. 10567. Rated loads do not exceed 87% of hydraulic lift capacity or 75% of tipping load.



PC490LC-10 LIFTING CAPACITY



- A: Reach from swing center
 B: Bucket hook height
 C: Lifting capacity
 Cf: Rating over front
 Cs: Rating over side
- Conditions :
 • Shoe: 700 mm 28"
 • Counterweight: 12317 kg 27,154 lbs

Front: 19.8 m 65' Fixed Undercarriage

Unit: kg lb

B	A	4.6 m 15'		6.1 m 20'		7.6 m 25'		9.1 m 30'		10.7 m 35'		12.2 m 40'		13.7 m 45'		15.2 m 50'		16.8 m 55'		18.3 m 60'	
	Cf	Cs	Cf	Cs	Cf	Cs	Cf	Cs	Cf	Cs	Cf	Cs	Cf	Cs	Cf	Cs	Cf	Cs	Cf	Cs	
15.2 m 50'																					
13.7 m 45'																					
12.2 m 40'																					
10.7 m 35'																					
9.1 m 30'																					
7.6 m 25'																					
6.1 m 20'																					
4.6 m 15'																					
3.0 m 10'																					
1.5 m 5'																					
0 m 0'																					
-1.5 m -5'																					
-3.0 m -10'																					
-4.6 m -15'																					
-6.1 m -20'																					
-7.6 m -25'																					
-9.1 m -30'																					
-10.7 m -35'																					
-12.2 m -40'																					

Front: 19.8 m 65' Variable Undercarriage

Unit: kg lb

B	A	4.6 m 15'		6.1 m 20'		7.6 m 25'		9.1 m 30'		10.7 m 35'		12.2 m 40'		13.7 m 45'		15.2 m 50'		16.8 m 55'		18.3 m 60'	
	Cf	Cs	Cf	Cs	Cf	Cs	Cf	Cs	Cf	Cs	Cf	Cs	Cf	Cs	Cf	Cs	Cf	Cs	Cf	Cs	
15.2 m 50'																					
13.7 m 45'																					
12.2 m 40'																					
10.7 m 35'																					
9.1 m 30'																					
7.6 m 25'																					
6.1 m 20'																					
4.6 m 15'																					
3.0 m 10'																					
1.5 m 5'																					
0 m 0'																					
-1.5 m -5'																					
-3.0 m -10'																					
-4.6 m -15'																					
-6.1 m -20'																					
-7.6 m -25'																					
-9.1 m -30'																					
-10.7 m -35'																					
-12.2 m -40'																					

*Load is limited by hydraulic capacity rather than tipping. Ratings are based on ISO standard No. 10567. Rated loads do not exceed 87% of hydraulic lift capacity or 75% of tipping load.

Notes:

- The details in this specification brochure are based on Dash 10 models as indicated. Some attachments may be installed on prior models but specifications may vary. Contact Young Corporation for details.
- Variations to the specifications in this brochure can be designed and produced in accordance with customer requirements by contacting Young Corporation with details.
- SUPER LONG FRONT ATTACHMENTS are designed for "LIGHT DUTY" work only. Excavating work or heavy hoisting may result in side loads and other activities that will damage the machine.
- Disassembly may be required due to transport restrictions.
- Illustrations may include optional equipment.
- Operating weights include additional counterweight when required.

KOMATSU®