

SPECIFICATIONS



ENGINE

Model Komatsu SAA6D102E-2
 Type Water-cooled, 4-cycle, direct injection
 Aspiration Turbocharged and air-air aftercooling
 Number of cylinders 6
 Bore 102 mm **4.02"**
 Stroke 120 mm **4.72"**
 Piston displacement 5.88 ltr **359 in³**
 Power rating (*SAE J1349 conditions)
 *Gross 133 kW **178 HP** @ 2000 rpm
 Flywheel 125 kW **168 HP** @ 2000 rpm
 Governor All-speed control, mechanical
 Meets 2001 EPA emission regulations, EPA Tier 2 emission ready.



HYDRAULICS

Type HydrauMind (Hydraulic Mechanical Intelligence New Design) system, closed-center system with load sensing valves and pressure compensated valves
 Number of selectable working modes 4
 Main pump:
 Type Variable displacement piston type
 Pumps for Boom, arm, bucket, swing, and travel circuits
 Maximum flow 439 ltr/min **116 U.S. gal/min**
 Supply for control circuit Self-reducing valve
 Hydraulic motors:
 Travel 2 x axial piston motor with parking brake
 Swing 1 x axial piston motor with swing holding brake
 Relief valve setting:
 Implement circuits 37.3 MPa 380 kgf/cm² **5,400 psi**
 Travel circuit 37.3 MPa 380 kgf/cm² **5,400 psi**
 Swing circuit 28.4 MPa 290 kgf/cm² **4,125 psi**
 Pilot circuit 3.2 MPa 33 kgf/cm² **470 psi**
 Hydraulic cylinders:
 (Number of cylinders – bore x stroke x rod diameter)
 Boom 2 – 135 mm x 1335 mm x 90 mm **5.3" x 52.5" x 3.5"**
 Arm 1 – 140 mm x 1635 mm x 100 mm **5.5" x 64.4" x 3.9"**
 Bucket: 1 – 130 mm x 1020 mm x 90 mm **5.1" x 40.2" x 3.5"**



DRIVES AND BRAKES

Steering control Two levers with pedals
 Drive method Hydrostatic
 Maximum drawbar pull 202 kN 20570 kg **45,350 lb**
 Gradeability 70%, 35°
 Maximum travel speed: High 5.5 km/h **3.4 mph**
 Mid 4.2 km/h **2.6 mph**
 Low 3.1 km/h **1.9 mph**
 Service brake Hydraulic lock
 Parking brake Mechanical disc brake



SWING SYSTEM

Drive method Hydrostatic
 Swing reduction Planetary gear
 Swing circle lubrication Grease-bathed
 Service brake Hydraulic lock
 Holding brake/Swing lock Mechanical disc brake
 Swing speed 11.7 rpm



UNDERCARRIAGE

Center frame X-frame
 Track frame Box-section
 Seal of track Sealed track
 Track adjuster Hydraulic
 Number of shoes (each side): 51
 Number of carrier rollers 2 each side
 Number of track rollers (each side): 10



COOLANT AND LUBRICANT CAPACITY (REFILLING)

Fuel tank 400 ltr **105.7 U.S. gal**
 Coolant 30.9 ltr **8.2 U.S. gal**
 Engine 24.0 ltr **6.3 U.S. gal**
 Final drive, each side 4.5 ltr **1.2 U.S. gal**
 Swing drive 6.6 ltr **1.7 U.S. gal**
 Hydraulic tank 143 ltr **37.8 U.S. gal**



OPERATING WEIGHT (APPROXIMATE)

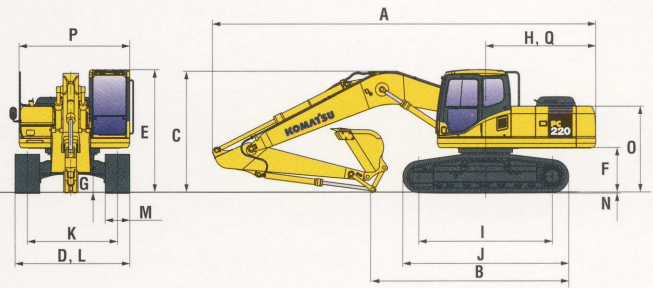
Operating weight including 5850 mm **19'2"** one-piece boom, 3045 mm **10'0"** arm, SAE heaped 1.0 m³ **1.31 yd³** backhoe bucket, rated capacity of lubricants, coolant, full fuel tank, operator, and standard equipment.

Shoes	PC220LC-7	
	Operating Weight	Ground Pressure
700 mm 28"	24200 kg 53,350 lb	0.42 kgf/cm ² 5.97 psi
800 mm 31.5"	24510 kg 54,046 lb	0.37 kgf/cm ² 5.26 psi

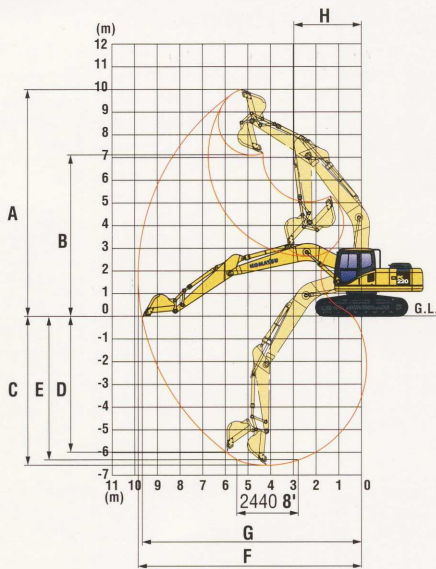


DIMENSIONS

	Arm Length	3045 mm 10'0"	3505 mm 11'6"
A	Overall length	9885 mm 32'5"	9910 mm 32'6"
B	Length on ground (transport):	5390 mm 17'8"	4950 mm 16'3"
C	Overall height (to top of boom)	3160 mm 10'4"	3270 mm 10'9"
D	Overall width	3380 mm 11'1"	3380 mm 11'1"
E	Overall height (to top of cab)	3015 mm 9'11"	3015 mm 9'11"
F	Ground clearance, counterweight	1100 mm 3'7"	1100 mm 3'7"
G	Ground clearance (minimum)	440 mm 1'5"	440 mm 1'5"
H	Tail swing radius	2940 mm 9'8"	2940 mm 9'8"
I	Track length on ground	3845 mm 12'7"	3845 mm 12'7"
J	Track length	4640 mm 15'3"	4640 mm 15'3"
K	Track gauge	2580 mm 8'6"	2580 mm 8'6"
L	Width of crawler	3380 mm 11'1"	3380 mm 11'1"
M	Shoe width	800 mm 31.5"	800 mm 31.5"
N	Grouser height	25 mm 1.0"	25 mm 1.0"
O	Machine cab height	2110 mm 6'11"	2110 mm 6'11"
P	Machine cab width	2710 mm 8'11"	2710 mm 8'11"
Q	Distance, swing center to rear end	2905 mm 9'6"	2905 mm 9'6"



WORKING RANGE



	Arm	3045 mm 10'0"	3505 mm 11'6"
A	Max. digging height	10000 mm 32'10"	10300 mm 33'10"
B	Max. dumping height	7035 mm 23'1"	7360 mm 24'2"
C	Max. digging depth	6920 mm 22'8"	7320 mm 24'0"
D	Max. vertical wall digging depth	6010 mm 19'9"	6230 mm 20'5"
E	Max. digging depth of cut for 8' level	6700 mm 22'0"	7150 mm 23'5"
F	Max. digging reach	10180 mm 33'5"	10580 mm 34'8"
G	Max. digging reach at ground level	10020 mm 32'10"	10420 mm 34'2"
H	Min. swing radius	3450 mm 11'4"	3340 mm 10'11"
SAE rating	Bucket digging force at power max.	15500 kgf 34,170 lb	15500 kgf 34,170 lb
	Arm crowd force at power max.	12100 kgf 26,680 lb	10900 kgf 24,030 lb
ISO rating	Bucket digging force at power max.	17500 kgf 38,580 lb	17500 kgf 38,580 lb
	Arm crowd force at power max.	13200 kgf 29,100 lb	11200 kgf 24,690 lb



BACKHOE BUCKET, ARM, AND BOOM COMBINATION

Bucket Type	Bucket			Arms			
	Capacity	OLW	Weight	Number of Teeth	10'0"	11'6"	
Komatsu "H" Series HD	0.54 m ³	0.70 yd ³	610 mm 24"	732 kg 1,614 lb	3	V	V
	0.72 m ³	0.94 yd ³	762 mm 30"	845 kg 1,862 lb	4	V	V
	0.90 m ³	1.18 yd ³	914 mm 36"	912 kg 2,011 lb	4	V	V
	1.09 m ³	1.43 yd ³	1067 mm 42"	1019 kg 2,247 lb	5	V	W
	1.28 m ³	1.67 yd ³	1219 mm 48"	1092 kg 2,407 lb	6	W	X
	1.49 m ³	1.95 yd ³	1219 mm 48"	1116 kg 2,461 lb	6	X	Y
Komatsu "H" Series SD	0.48 m ³	0.63 yd ³	610 mm 24"	770 kg 1,698 lb	3	V	V
	0.67 m ³	0.87 yd ³	762 mm 30"	890 kg 1,963 lb	4	V	V
	0.85 m ³	1.11 yd ³	914 mm 36"	969 kg 2,137 lb	4	V	V
	1.03 m ³	1.35 yd ³	1067 mm 42"	1078 kg 2,377 lb	5	V	W
	1.22 m ³	1.60 yd ³	1219 mm 48"	1188 kg 2,619 lb	6	W	X

V – Used with weights up to 3,500 lb/yd³, W – Used with weights up to 3,000 lb/yd³

X – Used with weights up to 2,500 lb/yd³, Y – Used with weights up to 2,000 lb/yd³, Z – Not useable