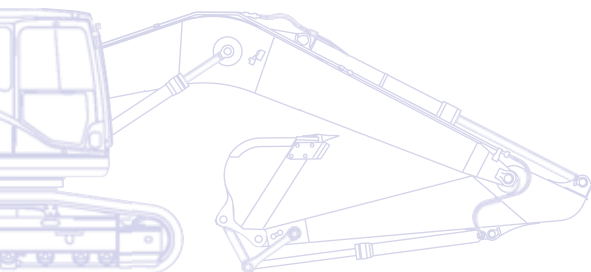


# KOMATSU

**PC**  
**450**



## Hydraulic Excavator **PC450-8/LC-8/LC-8 HD**



**ENGINE POWER**  
263 kW / 353 HP @ 1.900 rpm

**OPERATING WEIGHT**  
PC450-8: 44.350 - 45.190 kg  
PC450LC-8: 45.000 - 46.500 kg  
PC450LC-8 HD: 46.500 kg

**BUCKET CAPACITY**  
max. 3,50 m<sup>3</sup>

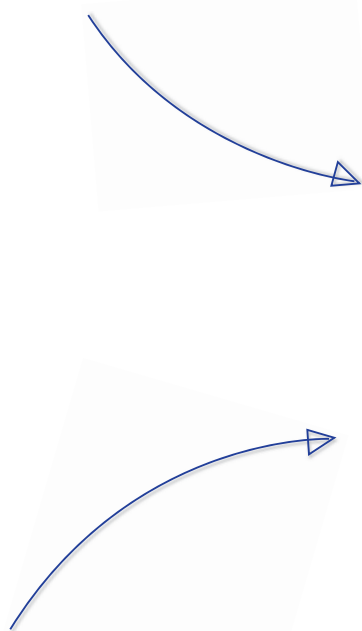
*Courtesy of Machine.Market*

# Walk-Around

The Komatsu Dash 8 crawler excavators set new worldwide standards for construction equipment. Operator safety and comfort is a focal point in their design, and their outstanding performance and specifications will contribute directly to the success of your business. With standard auxiliary hydraulic systems and quick-coupler power lines, these machines are ready to take on any job, whenever and wherever you need it done. Safely rely on Komatsu's 80 years of experience and commitment to Quality and Durability: your Dash 8 crawler excavator will quickly become your number one business partner.

## Powerful and environmentally friendly

- Low consumption ecot3 engine
- Komatsu integrated hydraulic system
- Eco-gauge and idle caution
- Reduced wastage



## Total versatility

- Ideal for a wide range of applications
- 5 working modes
- Two-mode boom control
- Wide choice of options
- Built-in versatility

# PC450-8

## ENGINE POWER

263 kW / 353 HP @ 1.900 rpm

## OPERATING WEIGHT

PC450-8: 44.350 - 45.190 kg  
PC450LC-8: 45.000 - 46.500 kg  
PC450LC-8 HD: 46.500 kg

## BUCKET CAPACITY

max. 3,50 m<sup>3</sup>



## Highest safety standards

- Safe SpaceCab™
- Rear view camera
- Optimal jobsite safety
- Safe access, easy maintenance
- Falling Object Protection System (FOPS) optional

## First-class operator comfort

- Wide, spacious cab
- Low noise design
- Low vibration levels
- Pressurised cab
- Large, widescreen TFT monitor panel



**KOMTRAX**

Komatsu Satellite  
Monitoring System

## Quality you can rely on

- Reliable and efficient
- Rugged design
- Komatsu-quality components
- Extensive dealer support network



# Total Versatility

## Ideal for a wide range of applications

Powerful and precise, the Komatsu PC450-8 is equipped to efficiently carry out any task your business requires. On big sites or small, for digging, trenching, landscaping or site preparation, the Komatsu original equipment hydraulic system always ensures maximum productivity and control.

## 5 working modes

Power, Lifting, Breaker, Attachment, and Economy.

The PC450-8 features 5 selectable working modes that optimise performance and fuel usage. The Economy mode can be adjusted for an ideal balance between power and economy to match your work. The oil flow delivered to hydraulic attachments is adjustable directly on the class-leading wide screen monitor panel.

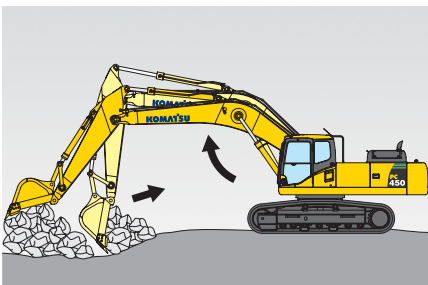
## Built-in versatility

To allow the use of many attachments, such as buckets, breakers or demolition tools, a power supply for a hydraulic quick coupler with adjustable pressure settings, and an additional hydraulic circuit controlled by a foot pedal and a sliding joystick push button are standard on the PC450-8. A second optional auxiliary line is also available for attachments that require extra hydraulic actuation.

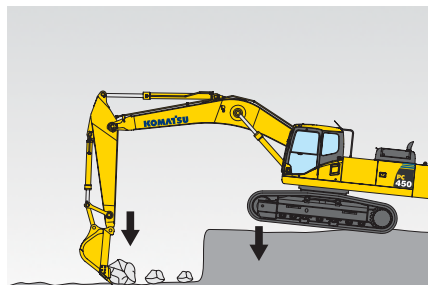
## “Heavy duty” features

The PC450LC-8 HD was designed to stand up to the hardest working conditions while still maintaining maximum performance. Its shorter boom (6.670 mm) was specially developed to enhance lift capacity and productivity in tough loading applications. Other features of this “heavy duty” excavator are: standard full length track roller guards, double grouser track shoes and optional OPG top and front guard.

## Two-mode boom control



*Smooth mode  
Boom floats upward, reducing lifting of machine front. This facilitates gathering blasted rock and scraping down operations.*



*Power mode  
Boom pushing force is increased, ditch digging and box digging operation on hard ground are improved.*







# Powerful and Environmentally Friendly

## Low consumption ecot3 engine

The Komatsu SAA6D125E-5 engine provides high torque, a better performance at low speed and low fuel consumption. This ecot3 engine features a new combustion chamber design with optimised ignition and combustion timing. The operating pressure of the new common rail system was increased for improved injection and fuel efficiency. The air-to-air charge cooler reduces the temperature of the compressed air supplied by the turbo charger to the cylinders, and further improves fuel consumption.

## Meets EU Stage IIIA

The new Komatsu ecot3 engine technology reduces NOx and particle emissions, fuel consumption and noise level. The Komatsu SAA6D125E-5 engine is certified for EPA Tier III and EU Stage IIIA emission regulations.

## Komatsu integrated hydraulic system

The PC450-8 is a highly responsive and productive machine with all major hydraulic parts designed and manufactured by Komatsu. The electronic Closed Load Sensing hydraulic System (CLSS) offers complete control during individual or combined movements – without sacrificing performance or productivity.

## Eco-gauge and idle caution

The unique ECO-gauge helps the operator reduce emissions and fuel consumption for environmentally friendly and energy saving operations. And to further avoid wasting fuel when the machine is not actually working, a standard-fit idle caution is displayed if the engine idles for 5 minutes or more.

Komatsu SAA6D125E-5



Eco-gauge



Idle caution







## Reduced wastage

To avoid spillage of excess grease – and prolong the life of your machine – the PC450-8 can be equipped with an automatic greasing system that provides precisely the correct amount of grease when and where it's required.





# First-Class Operator Comfort

## Wide spacious cab

The newly designed, wide and spacious cab includes a heated air suspension seat with a reclining backrest. The seat height and longitudinal inclination are easily adjusted with a pull-up lever. You can also set the operational posture of the armrest and the position of the console or recline the seat all the way and place it into a fully flat state with the headrest attached.

## Pressurised cab

An automatic air conditioner, an air filter and a positive internal air pressure (60 Pa) combine to prevent external dust from entering the cab.

## Low noise design

Komatsu Dash 8 crawler excavators feature the lowest in-class external noise levels and are especially well-suited for work in confined spaces or urban areas. Reduced fan speed, a large capacity radiator, and the optimal usage of sound insulation and of sound absorbing materials help to make noise levels inside Dash 8 excavators comparable to those inside an executive car.

## Cab damper mounting

The built-in stability of the Komatsu PC450-8, combined with a highly rigid deck and a sprung multi-layer viscous mount system, drastically reduces vibration levels for the operator.



*Automatic air conditioner*



*Hot and cool box*



*Joysticks with proportional control button for attachments*





## Large, widescreen TFT monitor

To enable safe, accurate and smooth work, the user friendly monitor is the highly intuitive user interface for the machine's Equipment Management and Monitoring System (EMMS). Multilingual and with all essential information available at a glance, it features simple and easy to operate switches and multifunction keys that provide the operator with fingertip access to a wide range of functions and operating information.





# Highest Safety Standards

## Safe SpaceCab™

Specifically designed for Komatsu excavators, the Dash 8 cab has a tubular steel frame. It provides very high shock absorbency, impact resistance and durability. The seat belt is designed to keep the operator in the safety zone of the cab in the event of a roll-over. At your request, the Komatsu PC450-8 can also be fitted with an ISO 10262 Level 2 Falling Object Protective System (FOPS).

## Safe and easy maintenance

Thermal guards are placed around high temperature parts of the engine. The fan belt and pulleys are well protected and in case of damage, fire risk is reduced by a pump/engine partition that prevents hydraulic oil from spraying onto the engine.

## Optimal job site safety

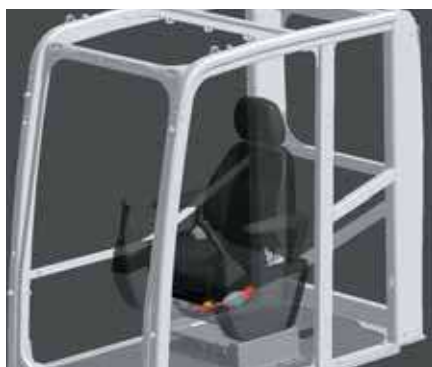
Safety features on the Komatsu PC450-8 comply with the latest industry standards and work together as a system to minimise risks to personnel in and around the machine. An audible travel alarm further promotes job site safety. Very durable anti-slip plates – with additional high friction covering – maintain long term traction performance.

## Rear view camera

A standard fitment camera gives an exceptionally clear view of the rear work zone on the wide-screen monitor panel. Large mirrors on both sides ensure that machine visibility meets the latest ISO standards.



Rear view camera



Safe SpaceCab™



Anti-slip plates







# Quality You Can Rely On

## Reliable and efficient

Productivity is the key to success – all major components of the PC450-8 are designed and directly manufactured by Komatsu. Essential machine functions are perfectly matched for a highly reliable and productive machine.

## Rugged design

Maximum toughness and durability – along with top class customer service – are the cornerstones of Komatsu's philosophy. Single piece plates and castings are used in key areas of the machine's structure for good load distribution. Highly durable rubbing strips on the underside of the arm protect the structure from material falling from the bucket.

## Komatsu-quality components

With the latest computer design techniques and a thorough test programme, Komatsu's global know-how produces machines that are designed, manufactured and tested to meet your highest standards.

## Extensive dealer support network

The extensive Komatsu distribution and dealer network is standing by to help keep your fleet in optimum condition. Customised servicing packages are available, with express availability of spare parts, to make sure that your Komatsu will continue to perform at its peak.



Cast boom foot



Single piece boom plates







# Komatsu Satellite Monitoring System



KOMTRAX™ is a revolutionary machine tracking system designed to save you time and money. You can now monitor your equipment anytime and anywhere. Use valuable machine data received via the KOMTRAX™ web site to optimise your maintenance planning and machine performances.

KOMTRAX™ can assist you with:

## **Full machine monitoring**

Get detailed operation data to know when your machines are used and how productive they are.

## **Total Fleet Management**

Keep track of the location of your machines at all times and discourage unapproved usage or theft.

## **Complete machine status**

Receive warnings, alerts and cautions, via a web site or by e-mail, to help with maintenance planning and for longer machine life.

For further details on KOMTRAX™, please ask your Komatsu dealer for the latest KOMTRAX™ brochure.



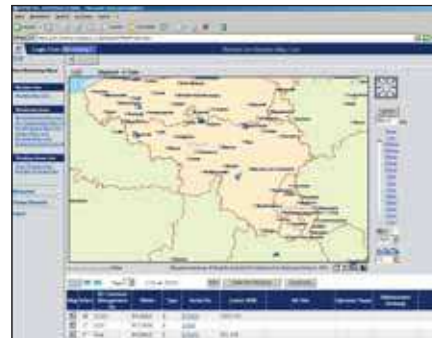




*Machine working time - With the “daily working record” chart, get precise engine running time data: when your machine was started and when it was shut down, as well as total engine running time.*



*Maintenance planning - To increase productivity and improve maintenance planning, alerts indicate when items such as filters or oil must be replaced.*



*Fleet location - The machine list instantly locates all your machines, even those in other countries.*



*Machine tracking during transport - When your machine is transported, KOMTRAX™ sends travel messages to the web site or by e-mail to inform you of its progress, and confirms when it reaches its destination.*



*Alarm notifications - You can receive notification of alarms both via the KOMTRAX™ website and by e-mail.*



*Added security - The “engine lock” feature allows to program when a machine’s engine can be started. And with “geo-fence”, KOMTRAX™ sends notification every time your machine moves in or out of a predetermined operating area.*



# Easy Maintenance

## Side-by-side cooling

Since the radiator, aftercooler and oil cooler are arranged in parallel, it is easy to clean, remove and install them.



## Easy access to the engine oil filter and fuel drain valve

The engine oil filter and fuel drain valve are mounted remotely to improve accessibility.



## Long-life oil filters

The hydraulic oil filter uses high-performance filtering material for long element replacement intervals, which significantly reduces maintenance costs.



## Water separator

This is standard equipment which removes any water that has become mixed with the fuel, preventing fuel system damage.



## Washable floor

The floor is easy to keep clean. The gently inclined surface has a flanged floormat and drainage holes to facilitate runoff.



## Flexible warranty

When you purchase Komatsu equipment, you gain access to a broad range of programmes and services that have been designed to help you get the most from your investment. For example, Komatsu's Flexible Warranty Programme provides a range of extended warranty options on the machine and its components. These can be chosen to meet your individual needs and activities. This programme is designed to help reduce total operating costs.



## ENGINE

|   |   |
|---|---|
| Model .....                                 | Komatsu SAA6D125E-5   |
| Type .....                                  | Common rail direct injection,<br>water-cooled, cooled EGR, emissionised,<br>turbocharged, after-cooled diesel |
| Engine power<br>at rated engine speed ..... | 1.900 rpm   |
| ISO 14396 .....                             | 263 kW / 353 HP   |
| ISO 9249 (net engine power) .....           | 257 kW / 345 HP   |
| No. of cylinders .....                      | 6   |
| Bore x stroke .....                         | 125 x 150 mm  |
| Displacement .....                          | 11,04 ltr   |
| Battery .....                               | 2 x 12 V/140 Ah   |
| Alternator .....                            | 24 V/60 A   |
| Starter motor .....                         | 24 V/11 kW  |
| Air filter type .....                       | Double element type with<br>monitor panel dust indicator and auto dust evacuator                              |
| Cooling .....                               | Suction type cooling fan with radiator fly screen   |

## HYDRAULIC SYSTEM

|                           |  |
|---------------------------|--|
| Type .....                | HydrauMind. Closed-centre system with load sensing<br>and pressure compensation valves         |
| Additional circuits ..... | Depending on the specification up to<br>2 additional circuits can be installed                 |
| Main pump .....           | 2 variable displacement piston pumps<br>supplying boom, arm, bucket, swing and travel circuits |
| Maximum pump flow .....   | 2 x 345 ltr/min  |
| Relief valve settings     |  |
| Implement .....           | 380 bar  |
| Travel .....              | 380 bar  |
| Swing .....               | 285 bar  |
| Pilot circuit .....       | 33 bar   |

## UNDERCARRIAGE

|                                   |   |
|-----------------------------------|---|
| Construction .....                | X-frame centre section<br>with box section track-frames |
| Track assembly                    |   |
| Type .....                        | Fully sealed  |
| Shoes (each side) .....           | 46 (PC450), 49 (PC450LC/HD)                             |
| Tension .....                     | Combined spring and hydraulic unit                      |
| Rollers                           |   |
| Track rollers (each side) .....   | 7 (PC450), 8 (PC450LC/HD)                               |
| Carrier rollers (each side) ..... | 2   |

## OPERATING WEIGHT (APPR.)

|                      | PC450-8          |                         | PC450LC-8        |                         | PC450LC-8 HD     |                         |
|----------------------|------------------|-------------------------|------------------|-------------------------|------------------|-------------------------|
|                      | Operating weight | Ground pressure         | Operating weight | Ground pressure         | Operating weight | Ground pressure         |
| Triple grouser shoes |                  |                         |                  |                         |                  |                         |
| 600 mm               | 44.350 kg        | 0,84 kg/cm <sup>2</sup> | 45.000 kg        | 0,86 kg/cm <sup>2</sup> | —                | —                       |
| 700 mm               | 44.760 kg        | 0,73 kg/cm <sup>2</sup> | 45.450 kg        | 0,74 kg/cm <sup>2</sup> | —                | —                       |
| 800 mm               | 45.190 kg        | 0,64 kg/cm <sup>2</sup> | 46.020 kg        | 0,66 kg/cm <sup>2</sup> | —                | —                       |
| 900 mm               | —                | —                       | 46.500 kg        | 0,59 kg/cm <sup>2</sup> | —                | —                       |
| Double grouser shoes |                  |                         |                  |                         |                  |                         |
| 600 mm               | —                | —                       | —                | —                       | 46.500 kg        | 0,82 kg/cm <sup>2</sup> |

PC450/LC-8: Operating weight, including 7.060 mm one-piece boom, 2.900 mm arm, 2.200 kg bucket, operator, lubricant, coolant, full fuel tank and the standard equipment.

PC450LC-8 HD: Operating weight, including 6.670 mm heavy duty short boom, 2.400 mm arm, 2.300 kg bucket, operator, lubricant, coolant, full fuel tank and the standard equipment.

## SWING SYSTEM

|                    |   |
|--------------------|---|
| Type .....         | Axial piston motor driving through<br>planetary double reduction gearbox  |
| Swing lock .....   | Electrically actuated wet multi-disc<br>brake integrated into swing motor |
| Swing speed .....  | 0 - 9 rpm   |
| Swing torque ..... | 132 kNm   |

## DRIVES AND BRAKES

|                            |   |
|----------------------------|---|
| Steering control .....     | 2 levers with pedals giving<br>full independent control of each track |
| Drive method .....         | Hydrostatic   |
| Travel operation .....     | Automatic 3-speed selection   |
| Gradeability .....         | 70%, 35°  |
| Max. travel speeds         |   |
| Lo / Mi / Hi .....         | 3,0 / 4,4 / 5,5 km/h  |
| Maximum drawbar pull ..... | 34.000 kgf  |
| Brake system .....         | Hydraulically operated discs<br>in each travel motor                  |

## SERVICE REFILL CAPACITIES

|                               |          |
|-------------------------------|----------|
| Fuel tank .....               | 650 ltr  |
| Radiator .....                | 34 ltr   |
| Engine oil .....              | 38 ltr   |
| Swing drive .....             | 13,4 ltr |
| Hydraulic tank .....          | 248 ltr  |
| Final drive (each side) ..... | 12 ltr   |

## ENVIRONMENT

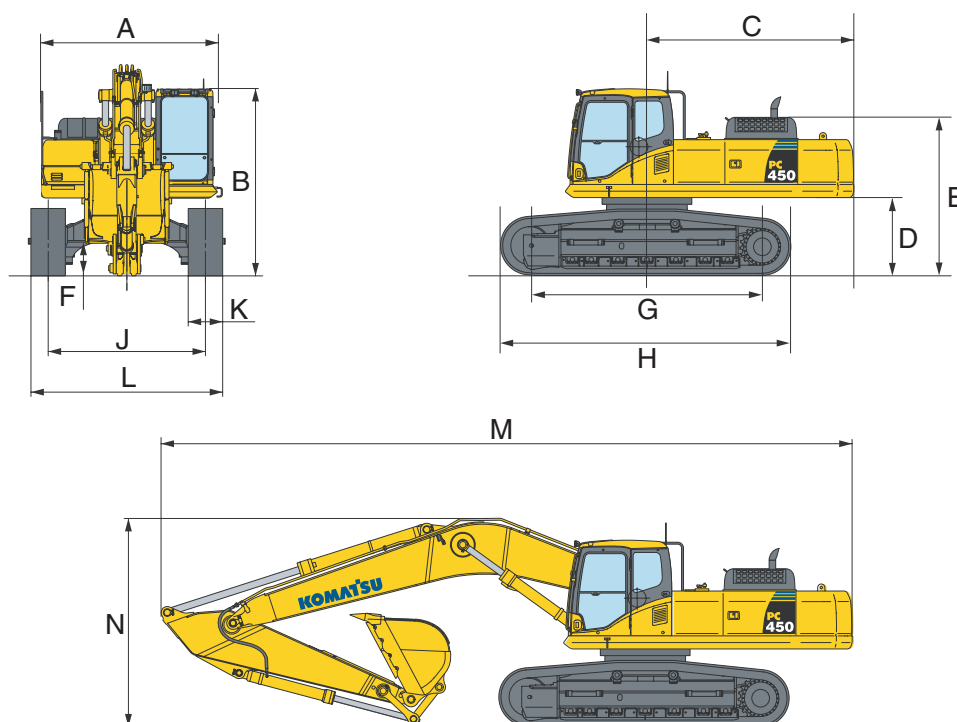
|                                   |  |
|-----------------------------------|--|
| Engine emissions .....            | Fully complies with EU Stage IIIA<br>and EPA Tier III exhaust emission regulations |
| Noise levels                      |  |
| LwA external .....                | 107 dB(A) (2000/14/EC Stage II)  |
| LpA operator ear .....            | 71 dB(A) (ISO 6396 dynamic test)   |
| Vibration levels (EN 12096:1997)* |  |
| Hand/arm .....                    | ≤ 2,5 m/s <sup>2</sup> (uncertainty K = 0,25 m/s <sup>2</sup> )                    |
| Body .....                        | ≤ 0,5 m/s <sup>2</sup> (uncertainty K = 0,10 m/s <sup>2</sup> )                    |

\* for the purpose of risk assessment under directive 2002/44/EC, please refer to ISO/TR 25398:2006.

# Dimensions & Performance Figures

| MACHINE DIMENSIONS                             | PC450-8           | PC450LC-8 / HD        |
|--|-------------------|-----------------------|
| A Overall width of upper structure             | 2.995 mm          | 2.995 mm              |
| B Overall height of cab                        | 3.250 mm          | 3.250 mm              |
| C Tail swing radius                            | 3.645 mm          | 3.645 mm              |
| D Clearance under counterweight                | 1.320 mm          | 1.320 mm              |
| E Machine tail height (to top of engine cover) | 2.920 mm          | 2.9520 mm             |
| F Ground clearance                             | 685 mm            | 685 mm                |
| G Tumbler center distance                      | 4.020 mm          | 4.350 mm              |
| H Track length                                 | 5.055 mm          | 5.355 mm              |
| J Track gauge                                  | 2.890 mm          | 2.890 mm              |
| K Track shoe width                             | 600, 700, 800 mm  | 600, 700, 800, 900 mm |
| L Overall track width with 600 mm shoe         | 3.490 - *2.990 mm | 3.490 - *2.990 mm     |
| Overall track width with 700 mm shoe           | 3.590 - *3.090 mm | 3.590 - *3.090 mm     |
| Overall track width with 800 mm shoe           | 3.690 - *3.190 mm | 3.690 - *3.190 mm     |
| Overall track width with 900 mm shoe           | -                 | 3.790 - *3.290 mm     |

\* Transport dimensions (retracted)



| TRANSPORT DIMENSIONS              | PC450/LC-8 |           |           |           |           |
|-----------------------------------|------------|-----------|-----------|-----------|-----------|
| Arm length                        | 2.400 mm   | 2.900 mm  | 3.400 mm  | 4.000 mm  | 4.800 mm  |
| M Transport length                | 11.905 mm  | 11.995 mm | 12.040 mm | 11.950 mm | 11.795 mm |
| N Overall height (to top of boom) | 3.850 mm   | 3.745 mm  | 3.660 mm  | 3.885 mm  | 4.435 mm  |

| TRANSPORT DIMENSIONS              | PC450LC-8 HD |           |           |
|-----------------------------------|--------------|-----------|-----------|
| Arm length                        | 2.400 mm     | 2.900 mm  | 3.400 mm  |
| M Transport length                | 11.530 mm    | 11.590 mm | 11.570 mm |
| N Overall height (to top of boom) | 3.570 mm     | 3.720 mm  | 3.660 mm  |





### PC450-8 / MAX. BUCKET CAPACITY AND WEIGHT

| MONO BOOM 6,7 M                            |                              |                              |   |   |   |
|--|------------------------------|------------------------------|---|---|---|
| Arm length                                 | 2,4 m                        | 2,9 m                        | - | - | - |
| Material weight up to 1,2 t/m <sup>3</sup> | 3,50 m <sup>3</sup> 2.450 kg | 3,50 m <sup>3</sup> 2.450 kg |   |   |   |
| Material weight up to 1,5 t/m <sup>3</sup> | 3,47 m <sup>3</sup> 2.450 kg | 3,18 m <sup>3</sup> 2.325 kg |   |   |   |
| Material weight up to 1,8 t/m <sup>3</sup> | 2,99 m <sup>3</sup> 2.250 kg | 2,74 m <sup>3</sup> 2.150 kg |   |   |   |

| MONO BOOM 7,0 M                            |                              |                              |                              |                              |                              |
|--|------------------------------|------------------------------|------------------------------|------------------------------|------------------------------|
| Arm length                                 | 2,4 m                        | 2,9 m                        | 3,4 m                        | 4,0 m                        | 4,8 m                        |
| Material weight up to 1,2 t/m <sup>3</sup> | 2,76 m <sup>3</sup> 2.175 kg | 2,76 m <sup>3</sup> 2.175 kg | 2,76 m <sup>3</sup> 2.175 kg | 2,40 m <sup>3</sup> 2.025 kg | 2,20 m <sup>3</sup> 1.925 kg |
| Material weight up to 1,5 t/m <sup>3</sup> | 2,76 m <sup>3</sup> 2.175 kg | 2,76 m <sup>3</sup> 2.175 kg | 2,71 m <sup>3</sup> 2.175 kg | 2,20 m <sup>3</sup> 1.925 kg | 1,69 m <sup>3</sup> 1.650 kg |
| Material weight up to 1,8 t/m <sup>3</sup> | 2,76 m <sup>3</sup> 2.175 kg | 2,56 m <sup>3</sup> 2.100 kg | 2,30 m <sup>3</sup> 2.000 kg | 1,69 m <sup>3</sup> 1.650 kg | 1,34 m <sup>3</sup> 1.450 kg |

### PC450LC-8 / MAX. BUCKET CAPACITY AND WEIGHT

| MONO BOOM 6,7 M                            |                              |                              |   |   |   |
|--|------------------------------|------------------------------|---|---|---|
| Arm length                                 | 2,4 m                        | 2,9 m                        | - | - | - |
| Material weight up to 1,2 t/m <sup>3</sup> | 3,50 m <sup>3</sup> 2.450 kg | 3,50 m <sup>3</sup> 2.450 kg |   |   |   |
| Material weight up to 1,5 t/m <sup>3</sup> | 3,50 m <sup>3</sup> 2.450 kg | 3,29 m <sup>3</sup> 2.375 kg |   |   |   |
| Material weight up to 1,8 t/m <sup>3</sup> | 3,11 m <sup>3</sup> 2.300 kg | 2,83 m <sup>3</sup> 2.200 kg |   |   |   |

| MONO BOOM 7,0 M                            |                              |                              |                              |                              |                              |
|--|------------------------------|------------------------------|------------------------------|------------------------------|------------------------------|
| Arm length                                 | 2,4 m                        | 2,9 m                        | 3,4 m                        | 4,0 m                        | 4,8 m                        |
| Material weight up to 1,2 t/m <sup>3</sup> | 2,76 m <sup>3</sup> 2.175 kg | 2,76 m <sup>3</sup> 2.175 kg | 2,76 m <sup>3</sup> 2.175 kg | 2,40 m <sup>3</sup> 2.025 kg | 2,20 m <sup>3</sup> 1.925 kg |
| Material weight up to 1,5 t/m <sup>3</sup> | 2,76 m <sup>3</sup> 2.175 kg | 2,76 m <sup>3</sup> 2.175 kg | 2,74 m <sup>3</sup> 2.205 kg | 2,20 m <sup>3</sup> 1.925 kg | 1,69 m <sup>3</sup> 1.650 kg |
| Material weight up to 1,8 t/m <sup>3</sup> | 2,76 m <sup>3</sup> 2.175 kg | 2,60 m <sup>3</sup> 2.125 kg | 2,30 m <sup>3</sup> 2.000 kg | 1,69 m <sup>3</sup> 1.650 kg | 1,34 m <sup>3</sup> 1.450 kg |

### PC450LC-8 HD / MAX. BUCKET CAPACITY AND WEIGHT

| MONO BOOM 6,7 M                            |                              |                              |   |   |   |
|--|------------------------------|------------------------------|---|---|---|
| Arm length                                 | 2,4 m                        | 2,9 m                        | - | - | - |
| Material weight up to 1,2 t/m <sup>3</sup> | 3,50 m <sup>3</sup> 2.450 kg | 3,50 m <sup>3</sup> 2.450 kg |   |   |   |
| Material weight up to 1,5 t/m <sup>3</sup> | 3,50 m <sup>3</sup> 2.450 kg | 3,29 m <sup>3</sup> 2.375 kg |   |   |   |
| Material weight up to 1,8 t/m <sup>3</sup> | 3,11 m <sup>3</sup> 2.300 kg | 2,83 m <sup>3</sup> 2.200 kg |   |   |   |

Max. capacity and weight have been calculated according to ISO 10567:2007.

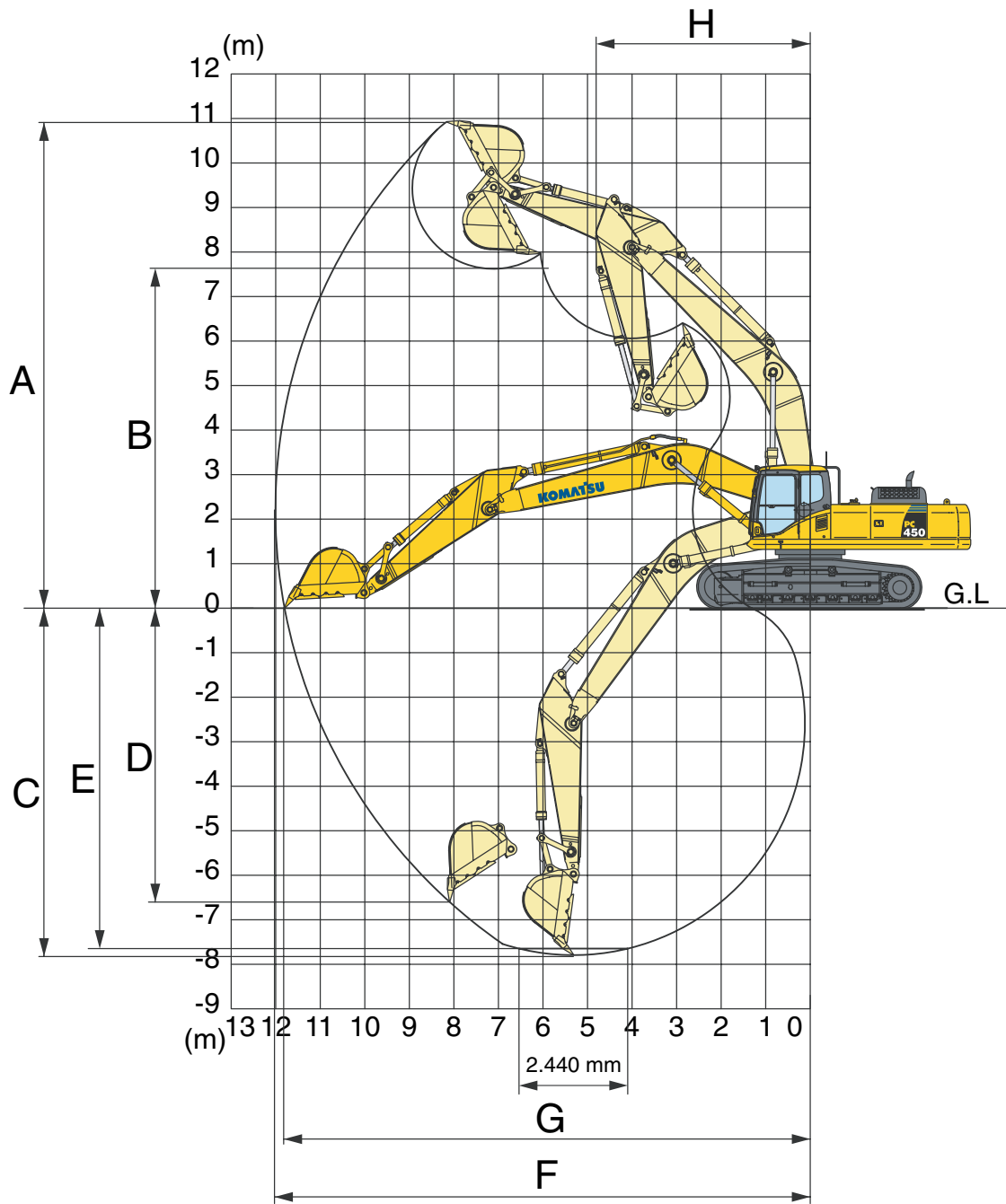
Please consult with your distributor for the correct selection of buckets and attachments to suit the application.

### BUCKET AND ARM FORCE (ISO)

| Arm length                         | 2,4 m      | 2,9 m      | 3,4 m      | 4,0 m      | 4,8 m      |
|------------------------------------|------------|------------|------------|------------|------------|
| Arm crowd force                    | 24.200 kgf | 24.400 kgf | 20.400 kgf | 18.100 kgf | 15.800 kgf |
| Arm crowd force at power max.      | 25.900 kgf | 26.200 kgf | 21.800 kgf | 19.400 kgf | 17.000 kgf |
| Bucket digging force               | 26.100 kgf | 26.100 kgf | 26.100 kgf | 26.100 kgf | 26.100 kgf |
| Bucket digging force at power max. | 28.000 kgf | 28.000 kgf | 28.000 kgf | 28.000 kgf | 28.000 kgf |

# Working Range

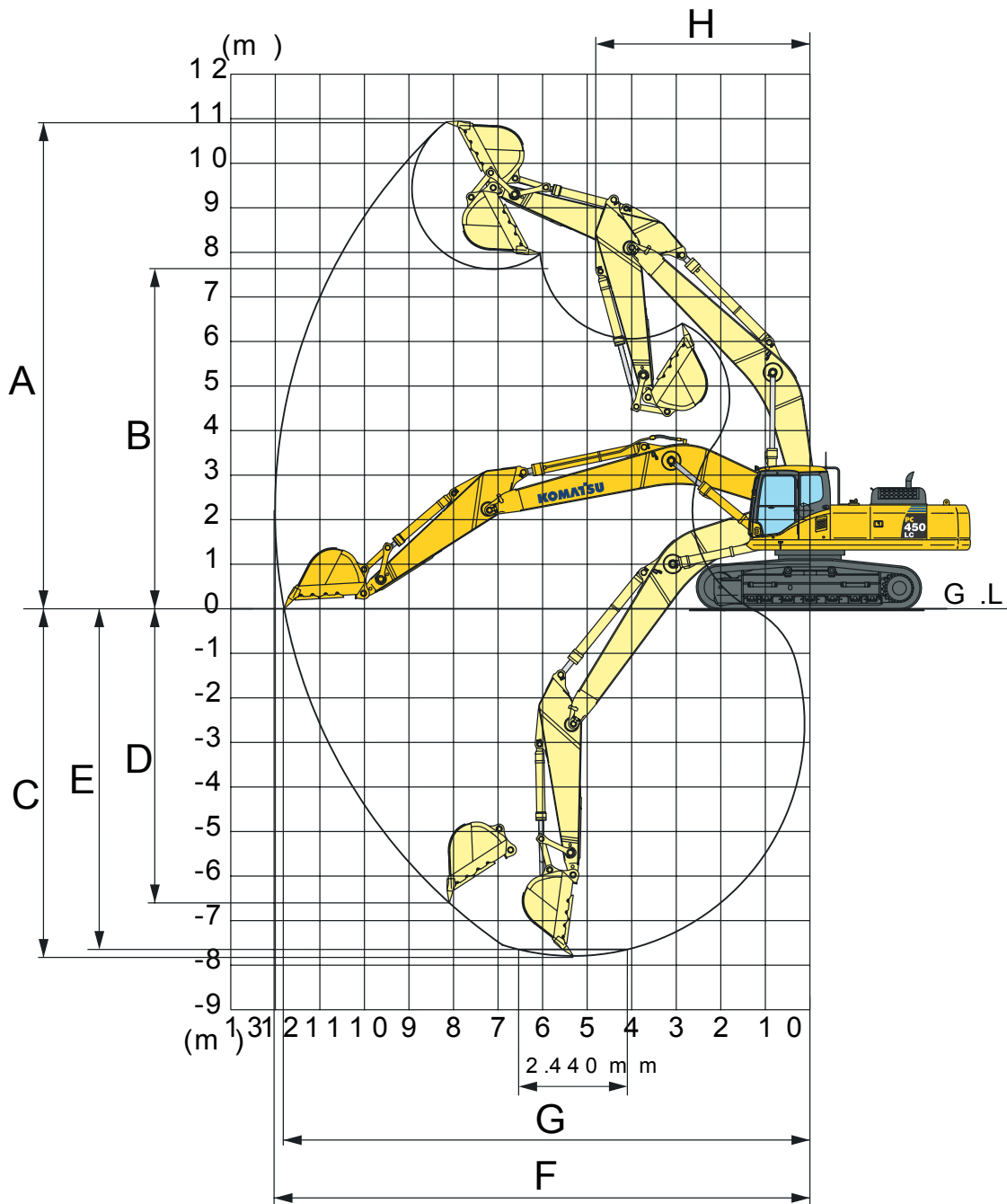
PC450/LC-8



| ARM LENGTH                                   | 2.400 mm  | 2.900 mm  | 3.400 mm  | 4.000 mm  | 4.800 mm  |
|--|-----------|-----------|-----------|-----------|-----------|
| A Max. digging height                        | 10.310 mm | 10.285 mm | 10.925 mm | 11.025 mm | 11.485 mm |
| B Max. dumping height                        | 7.070 mm  | 7.080 mm  | 7.625 mm  | 7.715 mm  | 8.145 mm  |
| C Max. digging depth                         | 6.845 mm  | 7.345 mm  | 7.790 mm  | 8.445 mm  | 9.255 mm  |
| D Max. vertical wall digging depth           | 5.305 mm  | 5.700 mm  | 6.600 mm  | 7.285 mm  | 8.150 mm  |
| E Max. digging depth of cut for 2,44 m level | 6.650 mm  | 7.155 mm  | 7.650 mm  | 8.315 mm  | 9.145 mm  |
| F Max. digging reach                         | 11.080 mm | 11.445 mm | 12.005 mm | 12.565 mm | 13.365 mm |
| G Max. digging reach at ground level         | 10.855 mm | 11.230 mm | 11.800 mm | 12.365 mm | 13.180 mm |
| H Min. swing radius                          | 4.835 mm  | 4.810 mm  | 4.805 mm  | 4.800 mm  | 4.885 mm  |



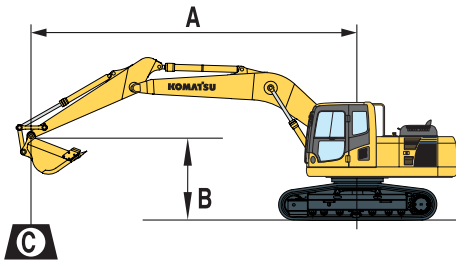
# PC450LC-8 HD



| ARM LENGTH                                   | 2.400 mm  | 2.900 mm  |
|--|-----------|-----------|
| A Max. digging height                        | 10.359 mm | 10.363 mm |
| B Max. dumping height                        | 7.067 mm  | 7.102 mm  |
| C Max. digging depth                         | 6.401 mm  | 6.902 mm  |
| D Max. vertical wall digging depth           | 4.876 mm  | 5.161 mm  |
| E Max. digging depth of cut for 2,44 m level | 6.220 mm  | 6.741 mm  |
| F Max. digging reach                         | 10.713 mm | 11.083 mm |
| G Max. digging reach at ground level         | 10.481 mm | 10.868 mm |
| H Min. swing radius                          | 4.245 mm  | 4.409 mm  |

# Lifting Capacity

## PC450-8



A – Reach from swing center

B – Bucket hook height

C – Lifting capacities, including bucket (1.914 kg), bucket linkage (400 kg) and bucket cylinder (280 kg)

When removing bucket, linkage or cylinder, lifting capacities can be increased by their respective weights.

With 600 mm shoes

– Rating over front

– Rating over side

– Rating at maximum reach

| Arm length             | A      |            | 7,5 m  |         | 6,0 m |         | 4,5 m  |         | 3,0 m   |         |
|------------------------|--------|------------|--------|---------|-------|---------|--------|---------|---------|---------|
|                        | B      |            |        |         |       |         |        |         |         |         |
| <br>1,9 m <sup>3</sup> | 6,0 m  | kg *4.400  | *4.400 |         |       |         |        |         |         |         |
|                        | 4,5 m  | kg *4.500  | 4.050  |         |       |         |        |         |         |         |
|                        | 3,0 m  | kg *4.700  | 3.800  | *10.700 | 8.750 | *13.100 | 12.700 | *17.750 | *17.750 |         |
|                        | 1,5 m  | kg *5.050  | 3.700  | 11.850  | 8.250 | *15.450 | 11.800 | *22.150 | 18.600  |         |
|                        | 0,0 m  | kg *5.600  | 3.750  | 11.400  | 7.800 | 16.350  | 11.050 | *23.700 | 17.350  |         |
|                        | -1,5 m | kg 5.850   | 3.900  | 11.050  | 7.500 | 15.850  | 10.600 | *23.050 | 16.750  | *10.800 |
|                        | -3,0 m | kg 6.400   | 4.300  | 10.900  | 7.350 | 15.600  | 10.400 | *23.650 | 16.550  | *16.100 |
|                        | -4,5 m | kg 7.400   | 5.000  | 10.850  | 7.350 | 15.650  | 10.400 | *21.700 | 16.750  | *22.650 |
| <br>1,9 m <sup>3</sup> | 6,0 m  | kg *5.800  | 5.350  |         |       |         |        |         |         |         |
|                        | 4,5 m  | kg *6.000  | 4.800  | *10.500 | 9.150 |         |        |         |         |         |
|                        | 3,0 m  | kg *6.300  | 4.500  | *11.750 | 8.650 | *14.700 | 12.400 | *20.750 | 19.650  |         |
|                        | 1,5 m  | kg 6.400   | 4.400  | 11.800  | 8.200 | *16.700 | 11.600 | *23.250 | 18.050  |         |
|                        | 0,0 m  | kg 6.500   | 4.450  | 11.400  | 7.850 | 16.300  | 11.050 | *20.450 | 17.200  |         |
|                        | -1,5 m | kg 6.850   | 4.700  | 11.150  | 7.650 | 15.950  | 10.700 | *23.250 | 16.900  | *11.150 |
|                        | -3,0 m | kg 7.650   | 5.200  | 11.100  | 7.550 | 15.850  | 10.650 | *22.800 | 16.950  | *19.200 |
|                        | -4,5 m | kg 9.100   | 6.250  | 11.150  | 7.650 | *15.500 | 10.750 | *20.100 | 17.250  | *24.850 |
| <br>1,9 m <sup>3</sup> | 6,0 m  | kg *6.400  | 5.400  | *9.700  | 8.950 |         |        |         |         |         |
|                        | 4,5 m  | kg *6.600  | 4.800  | *10.700 | 8.550 | *12.900 | 12.550 |         |         |         |
|                        | 3,0 m  | kg 6.600   | 4.450  | 11.700  | 8.100 | *15.100 | 11.750 | *21.100 | 18.650  |         |
|                        | 1,5 m  | kg 6.500   | 4.350  | 11.250  | 7.700 | 16.350  | 11.050 | *16.250 | *16.250 |         |
|                        | 0,0 m  | kg 6.650   | 4.400  | 10.950  | 7.400 | 15.800  | 10.550 | *16.300 | *16.300 |         |
|                        | -1,5 m | kg 7.100   | 4.750  | 10.800  | 7.250 | 15.600  | 10.400 | *22.000 | 16.800  |         |
|                        | -3,0 m | kg 8.100   | 5.400  | 10.750  | 7.250 | 15.650  | 10.400 | *21.200 | 16.950  | *19.850 |
|                        | -4,5 m | kg *9.300  | 6.800  | *10.500 | 7.400 | *13.950 | 10.600 | *18.000 | 17.100  | *22.750 |
| <br>1,9 m <sup>3</sup> | 6,0 m  | kg 8.850   | 6.150  | *10.200 | 8.750 |         |        |         |         |         |
|                        | 4,5 m  | kg 7.850   | 5.400  | *11.100 | 8.350 | *13.600 | 12.250 | *18.150 | *18.150 |         |
|                        | 3,0 m  | kg 7.350   | 4.950  | 11.550  | 7.950 | *15.700 | 11.450 |         |         |         |
|                        | 1,5 m  | kg 7.150   | 4.800  | 11.100  | 7.550 | 16.050  | 10.800 |         |         |         |
|                        | 0,0 m  | kg 7.350   | 4.900  | 10.850  | 7.300 | 15.650  | 10.400 |         |         |         |
|                        | -1,5 m | kg 7.950   | 5.300  | 10.700  | 7.200 | 15.550  | 10.300 | *22.200 | 16.750  |         |
|                        | -3,0 m | kg 9.250   | 6.200  | 10.750  | 7.250 | 15.550  | 10.400 | *19.850 | 17.000  | *21.350 |
|                        | -4,5 m | kg *10.050 | 8.200  | *9.100  | 7.450 | *12.800 | 10.650 | *16.250 | *16.250 | *19.250 |
| <br>1,9 m <sup>3</sup> | 6,0 m  | kg 9.700   | 6.800  | *10.950 | 8.750 |         |        |         |         |         |
|                        | 4,5 m  | kg 8.550   | 5.900  | *11.800 | 8.400 | *14.600 | 12.150 |         |         |         |
|                        | 3,0 m  | kg 7.950   | 5.450  | 11.600  | 8.000 | *16.600 | 11.450 |         |         |         |
|                        | 1,5 m  | kg 7.800   | 5.300  | 11.250  | 7.700 | 16.150  | 10.900 |         |         |         |
|                        | 0,0 m  | kg 8.050   | 5.450  | 11.000  | 7.500 | 15.850  | 10.600 |         |         |         |
|                        | -1,5 m | kg 8.800   | 5.950  | 10.950  | 7.400 | 15.800  | 10.600 | *17.750 | 17.100  |         |
|                        | -3,0 m | kg 10.400  | 7.050  | 11.050  | 7.500 | *15.100 | 10.700 | *18.650 | 17.300  | *17.750 |
|                        | -4,5 m | kg *10.000 | 9.600  |         |       | *11.750 | 11.050 | *14.650 | *14.650 |         |

\* Load is limited by hydraulic capacity rather than tipping. Ratings are based on SAE Standard No. J1097. Rated loads do not exceed 87% of hydraulic lift capacity or 75% of tipping load.



## PC450LC-8

| Arm length             | A      |    | 7,5 m   |        | 6,0 m   |       | 4,5 m   |        | 3,0 m   |         |         |         |
|------------------------|--------|----|---------|--------|---------|-------|---------|--------|---------|---------|---------|---------|
|                        | B      |    |         |        |         |       |         |        |         |         |         |         |
| <br>1,9 m <sup>3</sup> | 6,0 m  | kg | *4.400  | *4.400 |         |       |         |        |         |         |         |         |
|                        | 4,5 m  | kg | *4.500  | 4.150  |         |       |         |        |         |         |         |         |
|                        | 3,0 m  | kg | *4.700  | 3.900  | *10.700 | 8.850 | *13.100 | 12.850 | *17.750 | *17.750 |         |         |
|                        | 1,5 m  | kg | *5.050  | 3.750  | *12.050 | 8.350 | *15.450 | 11.950 | *22.150 | 18.800  |         |         |
|                        | 0,0 m  | kg | *5.600  | 3.800  | 12.900  | 7.950 | *17.000 | 11.200 | *23.700 | 17.550  |         |         |
|                        | -1,5 m | kg | *6.350  | 4.000  | 12.600  | 7.650 | *17.600 | 10.750 | *23.050 | 16.950  | *10.800 | *10.800 |
|                        | -3,0 m | kg | 7.300   | 4.350  | 12.400  | 7.450 | *17.450 | 10.550 | *23.650 | 16.800  | *16.100 | *16.100 |
|                        | -4,5 m | kg | 8.450   | 5.100  | 12.400  | 7.450 | *16.300 | 10.550 | *21.700 | 16.950  | *22.650 | *22.650 |
| <br>1,9 m <sup>3</sup> | 6,0 m  | kg | *5.800  | 5.400  |         |       |         |        |         |         |         |         |
|                        | 4,5 m  | kg | *6.000  | 4.850  | *10.500 | 9.250 |         |        |         |         |         |         |
|                        | 3,0 m  | kg | *6.300  | 4.550  | *11.750 | 8.750 | *14.700 | 12.550 | *20.750 | *19.700 |         |         |
|                        | 1,5 m  | kg | *6.850  | 4.450  | *12.950 | 8.350 | *16.700 | 11.750 | *23.250 | 18.250  |         |         |
|                        | 0,0 m  | kg | 7.350   | 4.500  | 12.950  | 8.000 | *17.750 | 11.200 | *20.450 | 17.400  |         |         |
|                        | -1,5 m | kg | 7.800   | 4.750  | 12.700  | 7.750 | *17.900 | 10.900 | *23.250 | 17.100  | *11.150 | *11.500 |
|                        | -3,0 m | kg | 8.650   | 5.300  | 12.600  | 7.650 | *17.200 | 10.800 | *22.800 | 17.200  | *19.200 | *19.200 |
|                        | -4,5 m | kg | *9.500  | 6.350  | *12.000 | 7.750 | *15.500 | 10.900 | *20.100 | 17.450  | *24.850 | *24.850 |
| <br>1,9 m <sup>3</sup> | 6,0 m  | kg | *6.400  | 5.500  | *9.700  | 9.050 |         |        |         |         |         |         |
|                        | 4,5 m  | kg | *6.600  | 4.850  | *10.700 | 8.650 | *12.900 | 12.700 |         |         |         |         |
|                        | 3,0 m  | kg | *7.000  | 4.550  | *11.850 | 8.200 | *15.100 | 11.900 | *21.100 | 18.900  |         |         |
|                        | 1,5 m  | kg | 7.400   | 4.400  | 12.800  | 7.800 | *16.850 | 11.200 | *16.250 | *16.250 |         |         |
|                        | 0,0 m  | kg | 7.550   | 4.500  | 12.500  | 7.500 | *17.550 | 10.700 | *16.300 | *16.300 |         |         |
|                        | -1,5 m | kg | 8.100   | 4.800  | 12.300  | 7.350 | *17.300 | 10.550 | *22.000 | 17.000  |         |         |
|                        | -3,0 m | kg | 9.250   | 5.500  | 12.300  | 7.350 | *16.250 | 10.550 | *21.200 | 17.200  | *19.850 | *19.850 |
|                        | -4,5 m | kg | *9.300  | 6.900  | *10.500 | 7.500 | *13.950 | 10.750 | *18.000 | 17.350  | *22.750 | *22.750 |
| <br>1,9 m <sup>3</sup> | 6,0 m  | kg | *9.450  | 6.250  | *10.200 | 8.850 |         |        |         |         |         |         |
|                        | 4,5 m  | kg | 8.900   | 5.450  | *11.100 | 8.500 | *13.600 | 12.400 | *18.150 | *18.150 |         |         |
|                        | 3,0 m  | kg | 8.350   | 5.050  | *12.200 | 8.050 | *15.700 | 11.600 |         |         |         |         |
|                        | 1,5 m  | kg | 8.150   | 4.900  | 12.650  | 7.650 | *17.150 | 10.950 |         |         |         |         |
|                        | 0,0 m  | kg | 8.400   | 5.000  | 12.350  | 7.400 | *17.450 | 10.550 |         |         |         |         |
|                        | -1,5 m | kg | 9.100   | 5.400  | 12.250  | 7.300 | *17.000 | 10.450 | *22.200 | 17.000  |         |         |
|                        | -3,0 m | kg | *10.300 | 6.300  | *12.500 | 7.350 | *15.550 | 10.550 | *19.850 | 17.200  | *21.350 | *21.350 |
|                        | -4,5 m | kg | *10.050 | 8.300  | *9.100  | 7.600 | *12.800 | 10.800 | *16.250 | *16.250 | *19.250 | *19.250 |
| <br>1,9 m <sup>3</sup> | 6,0 m  | kg | *10.350 | 6.850  | *10.950 | 8.850 |         |        |         |         |         |         |
|                        | 4,5 m  | kg | 9.650   | 6.000  | *11.800 | 8.500 | *14.600 | 12.300 |         |         |         |         |
|                        | 3,0 m  | kg | 9.050   | 5.550  | *12.800 | 8.100 | *16.600 | 11.600 |         |         |         |         |
|                        | 1,5 m  | kg | 8.850   | 5.400  | 12.750  | 7.800 | *17.700 | 11.050 |         |         |         |         |
|                        | 0,0 m  | kg | 9.150   | 5.550  | 12.550  | 7.600 | *17.700 | 10.750 |         |         |         |         |
|                        | -1,5 m | kg | 10.000  | 6.050  | 12.450  | 7.550 | *16.900 | 10.750 | *17.750 | 17.350  |         |         |
|                        | -3,0 m | kg | *10.700 | 7.200  | *11.600 | 7.600 | *15.100 | 10.850 | *18.650 | 17.550  | *17.550 | *17.750 |
|                        | -4,5 m | kg | *10.000 | 9.750  |         |       | *11.750 | 11.100 | *14.650 | *14.650 |         |         |

## PC450LC-8 HD

|                        |        |    |         |        |         |       |         |         |         |         |         |         |
|------------------------|--------|----|---------|--------|---------|-------|---------|---------|---------|---------|---------|---------|
| <br>1,9 m <sup>3</sup> | 6,0 m  | kg | 10.250* | 7.500  | 10.850* | 9.350 |         |         |         |         |         |         |
|                        | 4,5 m  | kg | 10.300* | 6.550  | 11.700* | 9.000 | 14.000* | 13.150  | 18.200* | 18.200* | 28.550* | 28.550* |
|                        | 3,0 m  | kg | 9.750   | 12.650 | 12.650  | 8.600 | 15.850* | 12.350  | 22.000* | 19.350  |         |         |
|                        | 1,5 m  | kg | 9.550   | 5.850  | 13.400* | 8.250 | 17.200* | 11.600  | 24.100* | 17.950  |         |         |
|                        | 0,0 m  | kg | 9.850   | 6.000  | 13.100  | 7.950 | 17.650* | 11.150  | 24.050* | 17.400  | 9.350*  | 9.350*  |
|                        | -1,5 m | kg | 10.750  | 6.500  | 13.000  | 7.850 | 17.050* | 11.000  | 22.600* | 17.350  | 17.850* | 17.850* |
|                        | -3,0 m | kg | 11.450  | 7.750  | 11.700* | 7.900 | 15.350* | 11.100  | 19.850* | 17.600  | 25.450* | 25.450* |
|                        | -4,5 m | kg | 11.100* | 10.550 |         |       | 11.600* | 11.150  | 15.400  | 15.400* | 18.900* | 18.900* |
| <br>1,9 m <sup>3</sup> | 6,0 m  | kg | 10.800* | 7.600  | 11.650* | 9.350 | 13.300* | 13.300* |         |         |         |         |
|                        | 4,5 m  | kg | 10.600  | 6.650  | 12.400* | 9.050 | 14.950* | 13.100  | 19.600* | 19.600* |         |         |
|                        | 3,0 m  | kg | 9.950   | 6.200  | 13.250* | 8.700 | 16.550* | 12.200  | 23.350* | 19.000  |         |         |
|                        | 1,5 m  | kg | 9.800   | 6.050  | 13.500  | 8.350 | 17.750* | 11.650  | 16.300* | 16.300* |         |         |
|                        | 0,0 m  | kg | 10.150  | 6.250  | 13.300  | 8.150 | 17.850* | 11.350  | 20.550* | 17.600  |         |         |
|                        | -1,5 m | kg | 11.100  | 6.850  | 13.150* | 8.050 | 16.900* | 11.250  | 21.850* | 17.700  | 14.400* | 14.400* |
|                        | -3,0 m | kg | 10.850* | 8.150  | 10.950* | 8.200 | 14.700* | 11.400  | 18.650* | 18.050  | 22.250* | 22.250* |
|                        | -4,5 m | kg | 9.700*  | 9.700* |         |       | 10.200* | 10.200* | 13.500* | 13.500* |         |         |

# Hydraulic Excavator

## PC450-8/LC-8/LC-8 HD

### Standard and Optional Equipment

#### ENGINE

|   |   |
|---|---|
| Komatsu SAA6D125E-5 turbocharged common rail direct injection diesel engine | ● |
| EU Stage IIIA/EPA Tier III compliant  | ● |
| Suction type cooling fan with radiator fly screen                           | ● |
| Automatic engine warm-up system   | ● |
| Engine overheat prevention system   | ● |
| Fuel control dial   | ● |
| Auto-deceleration function  | ● |
| Engine key stop   | ● |
| Engine ignition can be password secured on request                          | ● |
| Alternator 24 V/60 A  | ● |
| Starter motor 24 V/11 kW  | ● |
| Batteries 2 × 12 V/140 Ah   | ● |

#### HYDRAULIC SYSTEM

|  |   |
|--|---|
| Electronic closed-centre load sensing (E-CLSS) hydraulic system (HydrauMind)   | ● |
| Pump and engine mutual control (PEMC) system   | ● |
| 5-working mode selection system; power mode, economy mode, breaker mode, attachment mode and lifting mode                                      | ● |
| PowerMax function  | ● |
| Adjustable PPC wrist control levers for arm, boom, bucket and swing, with sliding proportional control for attachments and 3 auxiliary buttons | ● |
| Prepared for hydraulic quick-coupler   | ● |
| Additional hydraulic functions   | ○ |

#### UNDERCARRIAGE

|  |   |
|--|---|
| Track roller guards                              | ● |
| Track frame under-guards                         | ● |
| LC undercarriage                                 | ○ |
| 600, 700, 800, 900 mm triple grouser track-shoes | ○ |
| 600 mm double grouser track-shoes                | ○ |
| Full length track roller guards                  | ○ |

#### CABIN

|  |   |
|--|---|
| Reinforced safety SpaceCab™; highly pressurised and tightly sealed hyper viscous mounted cab with tinted safety glass windows, large roof window with sun shade, pull-up type front window with locking device, removable lower window, front window wiper with intermittent feature, sun roller blind, cigarette lighter, ashtray, luggage shelf, floor mat | ● |
| Heated air suspension seat with lumbar support, height adjustable arm rests and retractable seat belt  | ● |
| Automatic climate control system   | ● |
| 12 Volt power supply   | ● |
| Beverage holder and magazine rack  | ● |
| Hot and cool box   | ● |
| Radio  | ● |
| Lower wiper  | ○ |
| Rain visor (not with OPG)  | ○ |

#### SERVICE AND MAINTENANCE

|   |   |
|---|---|
| Automatic fuel line de-aeration   | ● |
| Double element type air cleaner with dust indicator and auto dust evacuator   | ● |
| KOMTRAX™ - Komatsu satellite monitoring system  | ● |
| Multi-function video compatible colour monitor with Equipment Management and Monitoring System (EMMS) and efficiency guidance | ● |
| Toolkit and spare parts for first service   | ● |
| Automatic greasing system   | ○ |
| Service points  | ○ |

#### WORK EQUIPMENT

|  |   |
|--|---|
| Mono boom (7.060 mm)                   | ○ |
| HD short boom (6.670 mm)               | ○ |
| 2,4 m; 2,9 m; 3,4 m; 4,0 m; 4,8 m arms | ○ |
| Bucket linkage with lifting eye        | ○ |
| Komatsu buckets                        | ○ |
| Komatsu breakers                       | ○ |

#### SAFETY EQUIPMENT

|                                    |   |
|------------------------------------|---|
| Rear view camera system            | ● |
| Electric horn                      | ● |
| Overload warning device            | ● |
| Lockable fuel cap and covers       | ● |
| Audible travel alarm               | ● |
| Boom safety valves                 | ● |
| Large handrails, rear-view mirrors | ● |
| Battery main switch                | ● |
| Arm safety valve                   | ○ |
| OPG Level II front guard (FOPS)    | ○ |
| OPG Level II top guard (FOPS)      | ○ |

#### DRIVES AND BRAKES

|   |   |
|---|---|
| Hydrostatic, 3-speed travel system with automatic shift and planetary gear type final drives, and hydraulic travel and parking brakes | ● |
| PPC control levers and pedals for steering and travel   | ● |

#### LIGHTING SYSTEM

|   |   |
|---|---|
| Working lights: 2 revolving frame, 1 boom (l.h.)  | ● |
| Additional working lights: 4 cab roof (front), 1 cab roof (rear), 1 boom (r.h.), 1 counterweight (rear), beacon | ○ |

#### OTHER EQUIPMENT

|   |   |
|---|---|
| Standard counterweight                                    | ● |
| Remote greasing for swing circle and pins                 | ● |
| Electric refuelling pump with automatic shut off function | ● |
| Standard colour scheme and decals                         | ● |
| Parts book and operator manual                            | ● |
| Biodegradable oil for hydraulic system                    | ○ |
| Customised paint  | ○ |

Further equipment on request

- standard equipment
- optional equipment

Your Komatsu partner:

# KOMATSU

**Komatsu Europe  
International NV**  
Mechelsesteenweg 586  
B-1800 VILVOORDE (BELGIUM)  
Tel. +32-2-255 24 11  
Fax +32-2-252 19 81  
[www.komatsu.eu](http://www.komatsu.eu)

UESS12604 09/2010

Materials and specifications are subject to change without notice.

**KOMATSU** is a trademark of Komatsu Ltd. Japan.