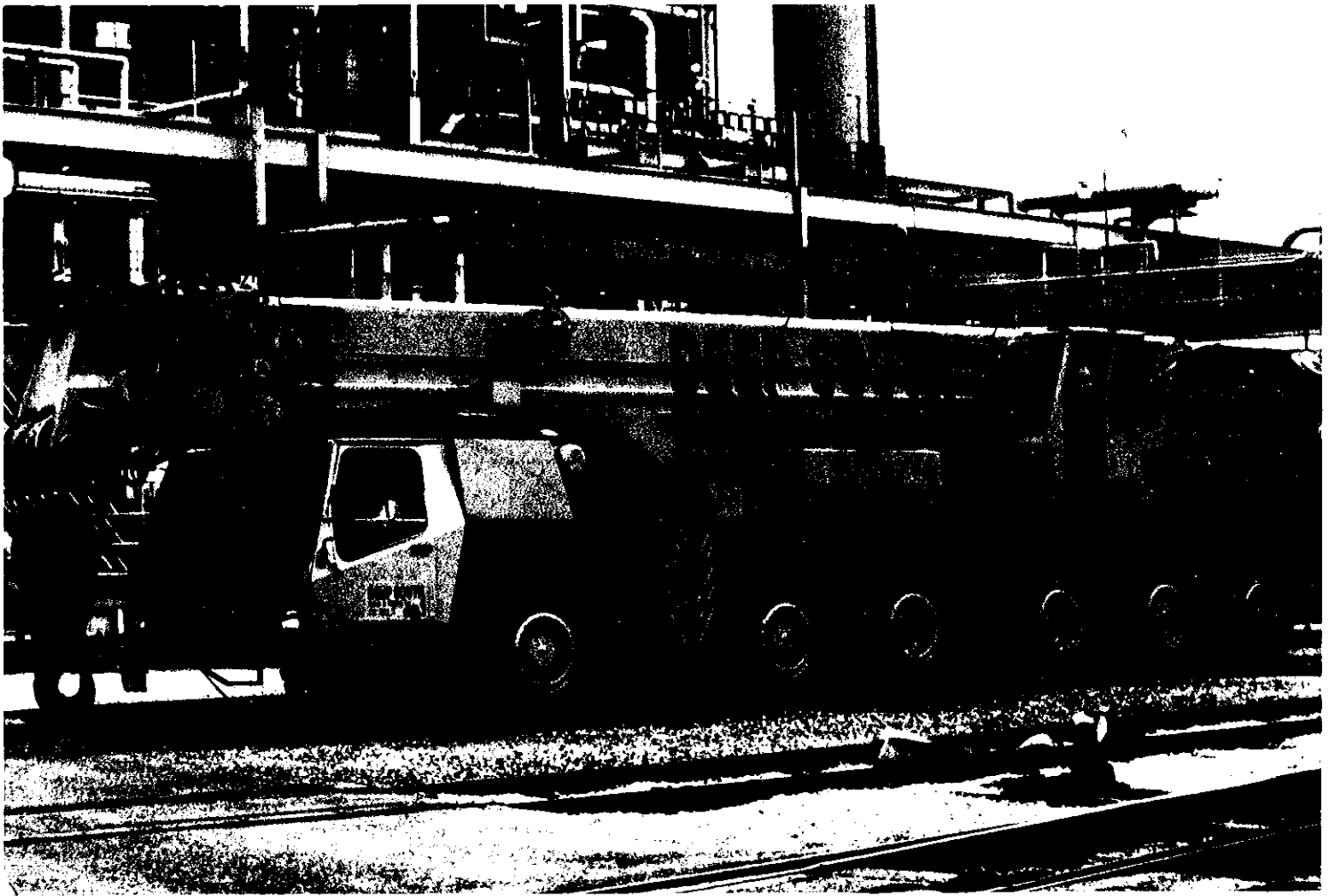
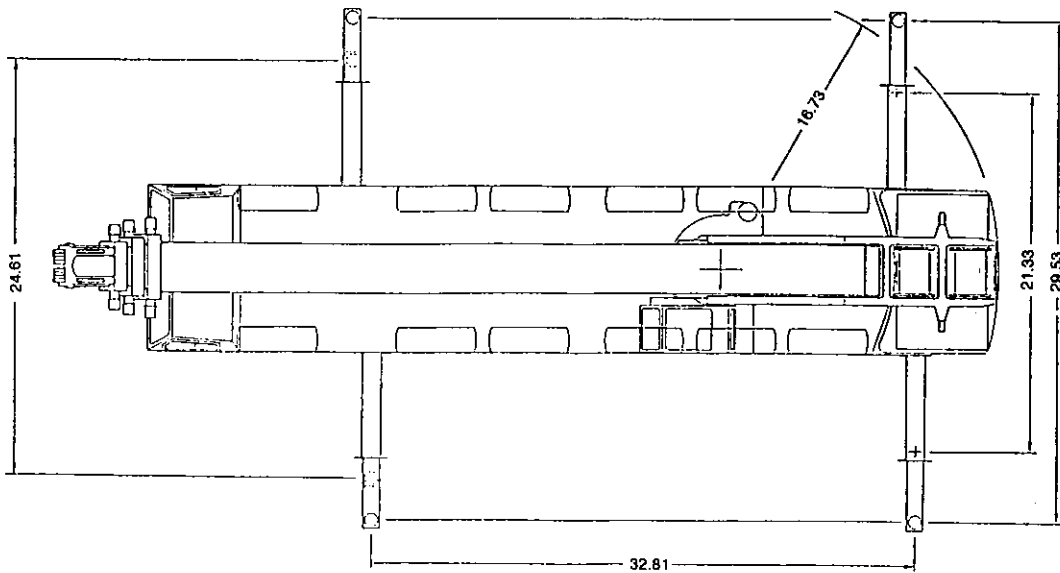
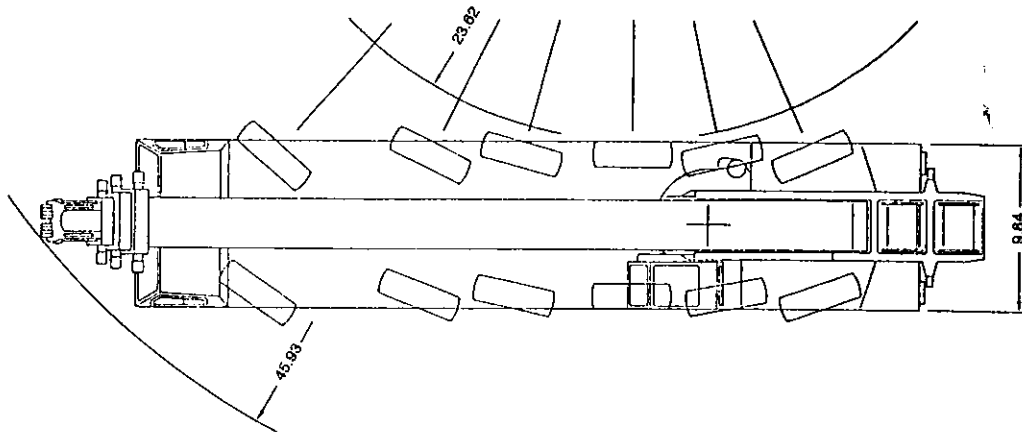
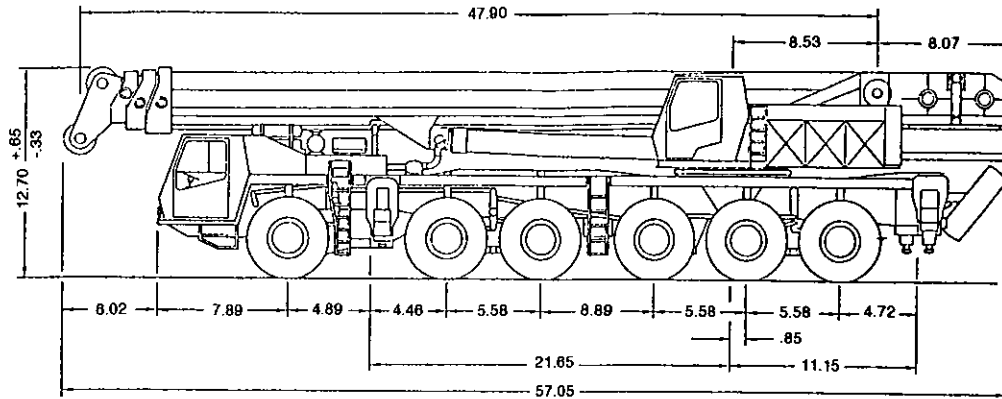


 **KRUPP**
KMK 6140

180 t Telescopic All-Terrain Crane



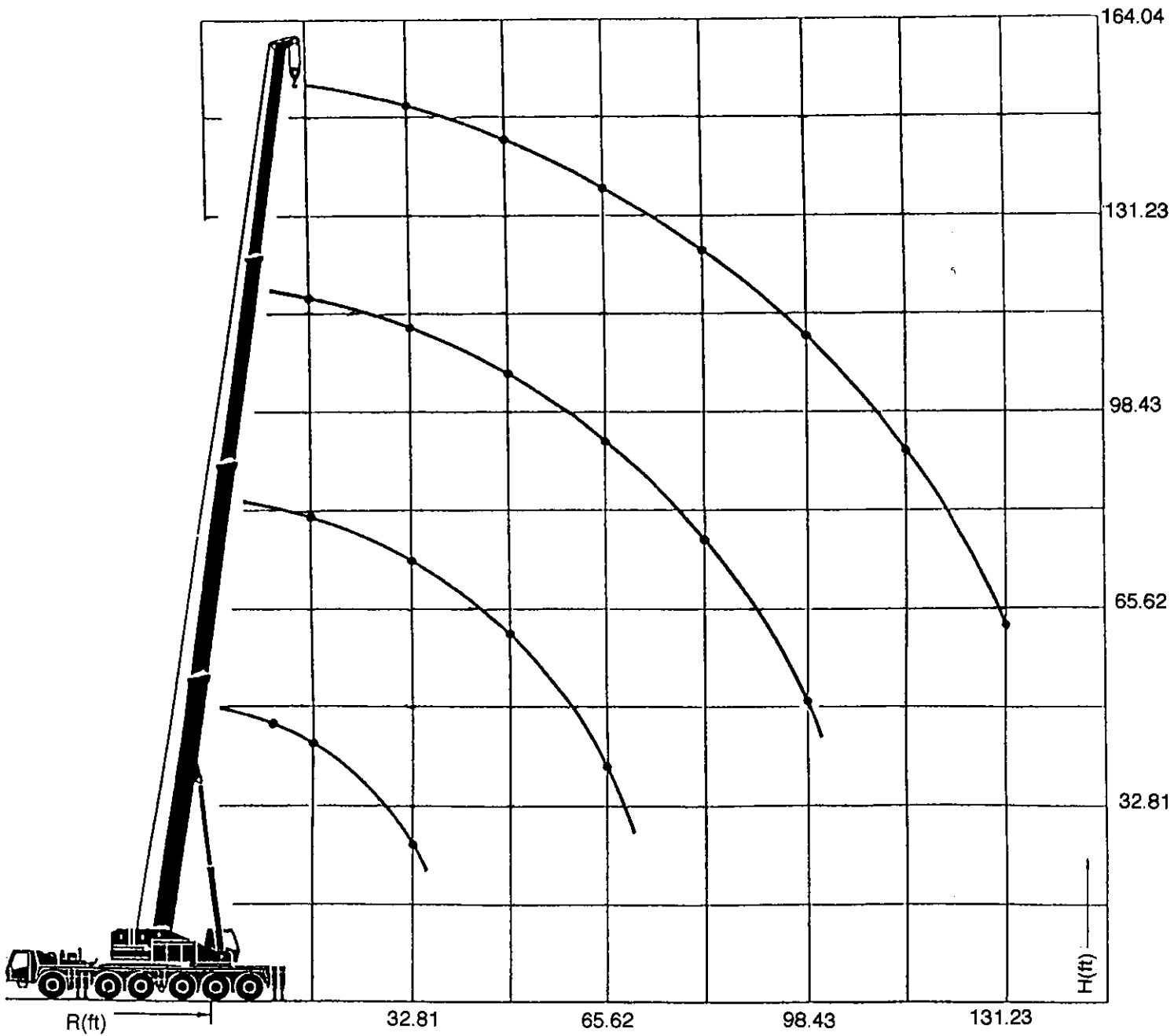
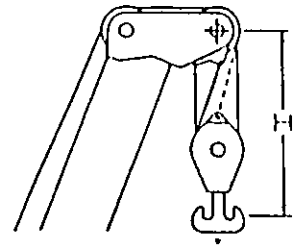
Dimensions (feet)



Hook height-curves

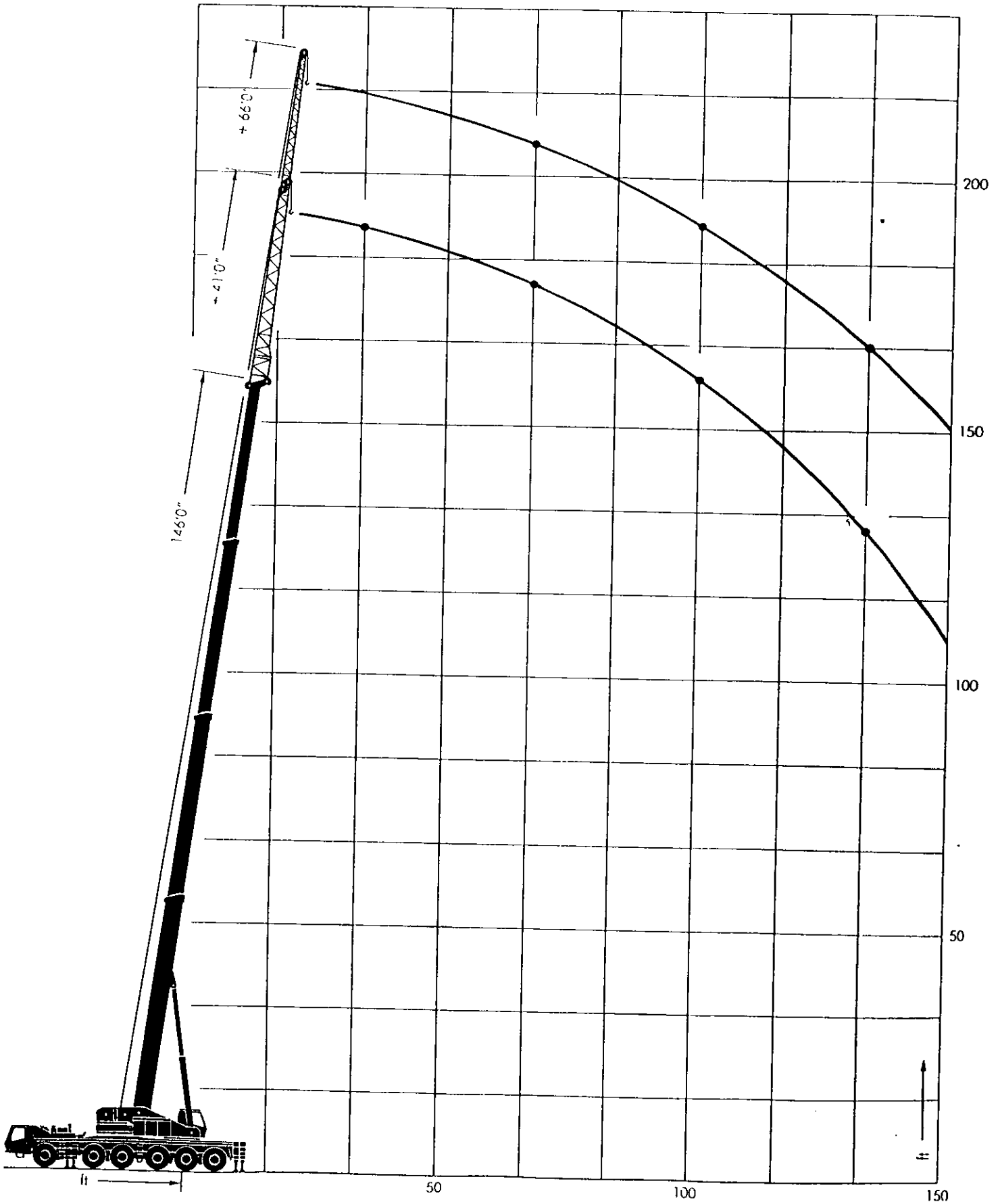
Hook blocks: End position to boom head

Capacity (t)	140	80	30
Sheaves	8	4	1
Distance H (ft)	7.55	7.55	5.91

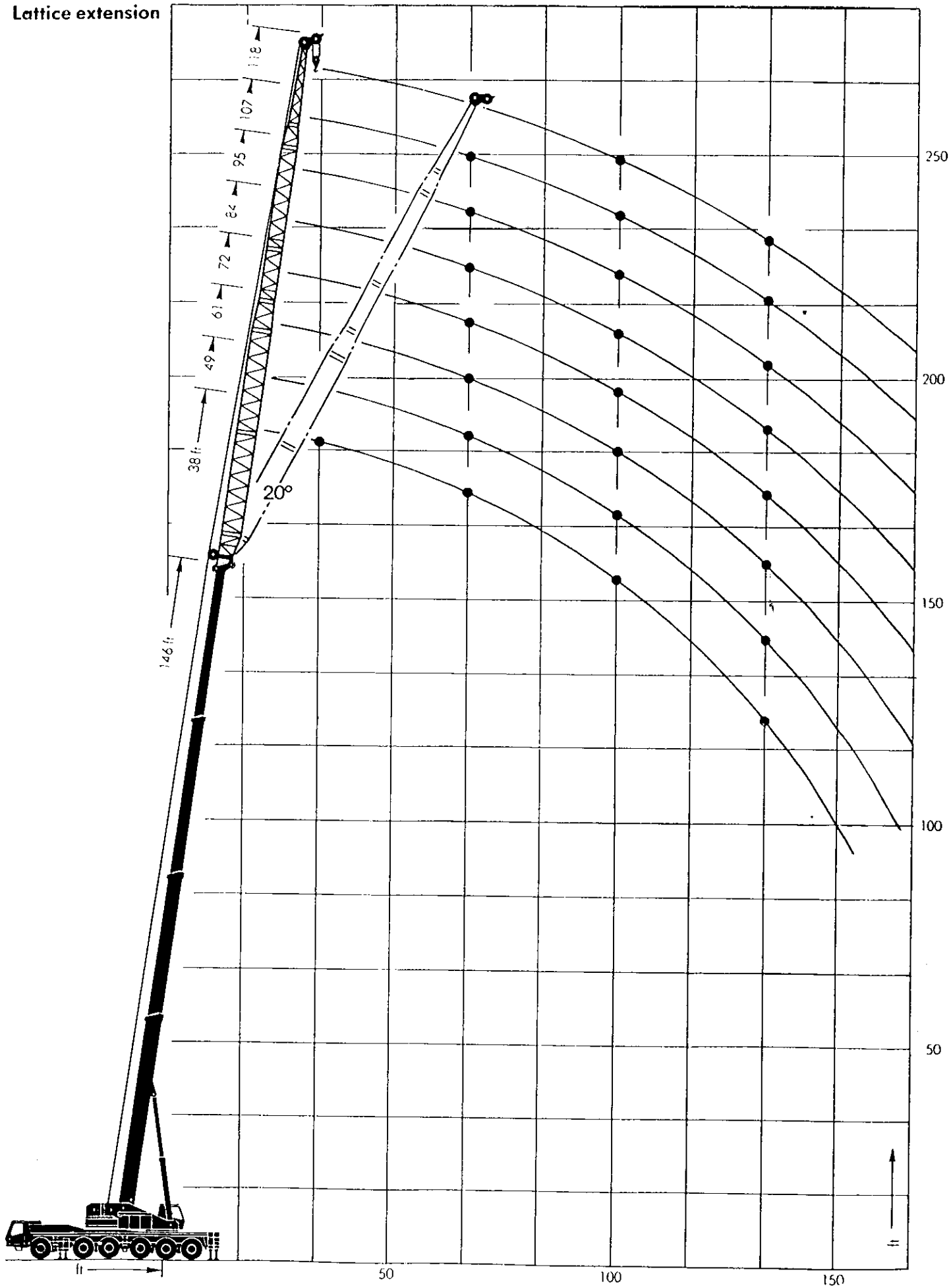


Hook elevation diagrams

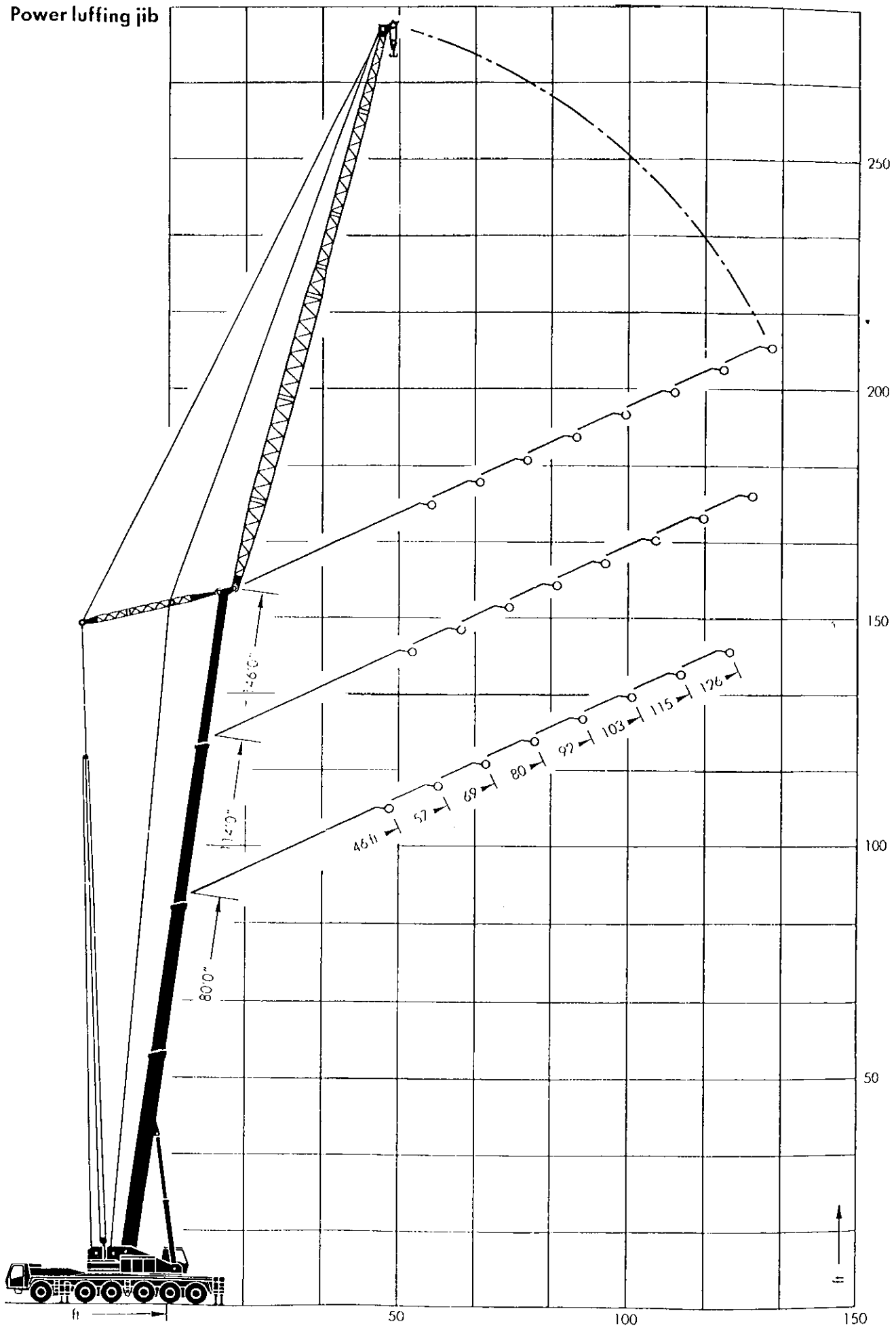
2-stage swing-away lattice extension



Lattice extension



Power luffing jib



Lifting Capacities For Telescope Boom(U.S. tons)										
Boom Length=47.9ft to 151.2ft								Counterweight		30.9ton
On Outriggers Working Range=360deg										
Radius(ft)	47.9ft Boom			82.7ft Boom		116.5ft Boom	151.2ft Boom	Radius(ft)		
	85%	85%	85%	85%	85%	85%	85%			
9.8	167.5	149.9	119.0							9.8
13.1	146.6	126.8	102.5	97.0	97.0					13.1
16.4	124.6	111.3	89.8	97.0	88.2	49.6				16.4
19.7	103.6	98.1	79.9	95.3	77.7	49.6				19.7
23.0	88.2	87.1	71.1	86.0	69.4	49.6				23.0
26.2	68.3	76.1	63.9	74.4	62.3	46.8	24.3			26.2
29.5	54.6	65.0	57.9	63.9	56.2	44.1	24.3			29.5
32.8	44.6	55.1	52.9	52.9	50.7	41.3	24.3			32.8
39.4				37.5	42.9	36.6	24.3			39.4
45.9				27.6	32.7	32.7	23.3			45.9
52.5				21.5	25.7	27.2	21.6			52.5
59.1				16.5	20.6	22.2	20.1			59.1
65.6				13.2	16.6	18.3	18.6			65.6
72.2				10.3	13.3	15.1	17.1			72.2
78.7						12.6	14.6			78.7
85.3						10.4	12.5			85.3
91.9						8.6	10.6			91.9
98.4						6.9	9.0			98.4
105.0						5.6	7.7			105.0
111.5							6.5			111.5
118.1							5.5			118.1
124.7							4.5			124.7
131.2							3.9			131.2
	I	0			1	1	1	I		
T1-T2-T3	II	0			0	1	1	II	T1-T2-T3	
	III	0			0	0	1	III		
Outrigger		24.6x32.8*	24.6x32.8	29.5x32.8	24.6x32.8	29.5x32.8	29.5x32.8	29.5x32.8		

*-Rear Outrigger Spread=21.3ft

Krupp KMK6140

Lifting Capacities For Telescopic Boom(U.S. tons)											
Boom Length=47.9ft to 151.2ft										Counterweight	23.1ton
On Outriggers Working Range=360deg											
Radius(ft)	47.9ft Boom			82.7ft Boom		114.2ft Boom	116.5ft Boom	146.3ft Boom	151.2ft Boom	Radius(ft)	
	85%	85%	85%	85%	85%	85%	85%	85%	85%		
9.8	167.5	149.9	119.0							3	9.8
13.1	140.0	126.8	102.5	97.0	97.0					4	13.1
16.4	119.0	110.2	89.3	97.0	88.2	57.3	49.6			5	16.4
19.7	100.3	97.0	78.8	88.2	77.7	57.3	49.6			6	19.7
23.0	77.7	83.2	70.0	79.9	69.4	53.5	49.6			7	23.0
26.2	59.0	70.5	63.4	69.4	62.3	50.2	46.8	28.1	24.3	8	26.2
29.5	46.8	59.0	57.9	56.8	56.2	46.3	44.1	28.1	24.3	9	29.5
32.8	38.6	48.0	52.9	46.3	50.7	43.5	41.3	28.1	24.3	10	32.8
39.4				32.4	37.8	38.4	36.6	27.0	24.3	12	39.4
45.9				23.8	28.4	30.2	30.2	24.8	23.3	14	45.9
52.5				18.2	22.2	23.8	23.8	22.6	21.6	16	52.5
59.1				13.8	17.5	19.1	19.1	20.9	20.1	18	59.1
65.6				10.5	13.9	15.7	15.7	17.5	17.5	20	65.6
72.2				7.8	11.0	12.7	12.7	14.8	14.8	22	72.2
78.7						10.3	10.3	12.5	12.5	24	78.7
85.3						8.4	8.4	10.4	10.4	26	85.3
91.9						6.6	6.6	8.7	8.7	28	91.9
98.4						5.3	5.3	7.4	7.4	30	98.4
105.0							4.1	6.1	6.1	32	105.0
111.5								5.1	5.1	34	111.5
118.1								4.1	4.1	36	118.1
124.7								3.2	3.2	38	124.7
131.2								2.5	2.5	40	131.2
	I	0		1		0.92	1	0.92	1	I	
T1-T2-T3	II	0		0		1	1	1	1	II	T1-T2-T3
	III	0		0		0	0	0.92	1	III	
Outrigger	24.6x32.8*	24.6x32.8	29.5x32.8	24.6x32.8	29.5x32.8	29.5x32.8	29.5x32.8	29.5x32.8	29.5x32.8		
*-Rear Outrigger Spread=21.3ft											

Lifting Capacities For Telescopic Boom(U.S. tons)											
Boom Length=47.9ft to 151.2ft										Counterweight	19.8ton
On Outriggers Working Range=360deg											
Radius(ft)	47.9ft Boom			82.7ft Boom		114.2ft Boom	116.5ft Boom	146.3ft Boom	151.2ft Boom	Radius(ft)	
	75%	75%	75%	75%	75%	75%	75%	75%	75%		
9.8	154.3	136	109.1							9.8	
13.1	127.9	115.7	93.7	88.2	88.2					13.1	
16.4	106.9	100.3	81.6	88.2	80.5	52.4	45.2			16.4	
19.7	88.7	88.2	71.6	80.5	71.1	52.4	45.2			19.7	
23.0	66.4	74.4	63.9	72.8	63.4	49.1	45.2			23.0	
26.2	50.4	62.8	57.9	61.2	56.8	45.7	43.0	25.9	22.6	26.2	
29.5	40.0	50.2	52.9	48.4	51.3	42.4	40.2	25.9	22.6	29.5	
32.8	32.7	40.8	46.3	39.0	44.9	39.7	37.8	25.9	22.6	32.8	
39.4				27.1	32.2	34.0	33.3	24.8	22.6	39.4	
45.9				19.8	24.3	25.7	25.7	22.7	21.2	45.9	
52.5				14.9	18.7	20.2	20.2	20.7	19.6	52.5	
59.1				11.1	14.8	16.2	16.2	18.0	18.0	59.1	
65.6				8.3	11.5	13.1	13.1	14.9	14.9	65.6	
72.2				6.1	8.9	10.5	10.5	12.3	12.3	72.2	
78.7						8.5	8.5	10.4	10.4	78.7	
85.3						6.8	6.8	8.6	8.6	85.3	
91.9						5.4	5.4	7.2	7.2	91.9	
98.4						4.1	4.1	6.0	6.0	98.4	
105.0							3.1	4.9	4.9	105.0	
111.5								4.0	4.0	111.5	
118.1								3.2	3.2	118.1	
124.7								2.4	2.4	124.7	
131.2								1.8	1.8	131.2	
	I	0		1		0.92	1	0.92	1	I	
T1-T2-T3	II	0		0		1	1	1	1	II	
	III	0		0		0	0	0.92	1	III	
Outrigger	24.6x32.8*	24.6x32.8	29.5x32.8	24.6x32.8	29.5x32.8	29.5x32.8	29.5x32.8	29.5x32.8	29.5x32.8		

*-Rear Outrigger Spread=21.3ft

Lifting Capacities For Telescopic Boom(U.S. tons)											
Boom Length=47.9ft to 151.2ft										Counterweight	14.3ton
On Outriggers Working Range=360deg											
Radius(ft)	47.9ft Boom			82.7ft Boom	81.7ft Boom	114.2ft Boom	116.5ft Boom	147.0ft Boom	151.2ft Boom	Radius(ft)	
	75%	75%	75%	75%	75%	75%	75%	75%	75%		
9.8	154.3	136	109.1							9.8	
13.1	125.7	114.1	93.7	88.2	66.1					13.1	
16.4	103.6	99.2	81.6	79.9	59.0	52.4				16.4	
19.7	81.6	83.8	71.6	70.0	54.0	52.4	29.8			19.7	
23.0	57.3	69.4	63.9	62.8	48.5	49.1	28.1			23.0	
26.2	43.5	55.7	57.3	55.1	44.6	45.7	26.5	25.9	22.6	26.2	
29.5	34.2	43.5	50.2	48.5	41.3	42.4	24.8	25.9	22.6	29.5	
32.8	27.6	34.7	41.3	39.9	38.4	39.2	23.5	25.9	22.6	32.8	
39.4				28.3	31.4	30.0	20.9	24.8	22.6	39.4	
45.9				21.1	23.9	22.6	19.0	22.7	21.2	45.9	
52.5				16.1	18.7	17.5	17.2	19.4	19.4	52.5	
59.1				12.3	15.0	13.9	15.8	15.7	15.7	59.1	
65.6				9.4	12.2	10.9	14.3	12.8	12.8	65.6	
72.2				7.1	9.9	8.6	12.1	10.6	10.6	72.2	
78.7						6.7	10.4	8.6	8.6	78.7	
85.3						5.1	8.8	7.1	7.1	85.3	
91.9						3.7	7.4	5.7	5.7	91.9	
98.4						2.5	6.3	4.5	4.5	98.4	
105.0							5.2	3.5	3.5	105.0	
111.5								2.6	2.6	111.5	
	I	0		1		0.92	1	0.92	1	I	
T1-T2-T3	II	0		0		1	1	1	1	II	
	III	0		0		0	0	0.92	1	III	
Outrigger	24.6x32.8*	24.6x32.8	29.5x32.8	29.5x32.8	24.6x32.8	29.5x32.8	29.5x32.8	29.5x32.8	29.5x32.8		

*-Rear Outrigger Spread=21.3ft

Lifting Capacities For Swing-Away Lattice (U.S.tons)										
Lattice Length=40.4ft to 65.6ft								Counterweight		19.8ton
On Outriggers Working Range=360deg										
Telescopic Boom										
114.2ft Boom 146.3ft Boom 146.3ft Boom										
Lattice Length										
40.4ft 40.4ft 65.6ft										
75% 85% 75% 85% 75% 85%										
Radius(ft)									Radius(ft)	
26.2	14.3	15.8							26.2	
29.5	13.9	15.2							29.5	
32.8	13.2	14.6		11.0	12.1				32.8	
39.4	12.1	13.3		11.0	12.1	7.2	7.8		39.4	
45.9	11.0	12.1		10.9	12.0	7.2	7.8		45.9	
52.5	10.1	11.1		10.3	11.2	7.2	7.8		52.5	
59.1	9.3	10.1		9.6	10.5	7.2	7.8		59.1	
65.6	8.6	9.4		9.0	9.9	6.8	7.5		65.6	
72.2	7.9	8.7		8.5	9.3	6.6	7.3		72.2	
78.7	7.4	8.0		7.9	8.7	6.3	6.8		78.7	
85.3	6.8	7.5		7.5	8.2	6.1	6.6		85.3	
91.9	6.4	6.9		7.1	7.7	5.7	6.3		91.9	
98.4	6.0	6.5		6.7	7.4	5.4	6.0		98.4	
105.0	5.6	6.2		5.6	6.2	5.2	5.6		105.0	
111.5	5.3	5.7		4.7	5.2	4.9	5.3		111.5	
118.1	5.0	5.4		3.9	4.2	4.6	5.1		118.1	
124.7	4.6	4.7		3.2	3.5	3.9	4.3		124.7	
131.2	4.1	4.4		2.5	2.8	3.3	3.6		131.2	
137.8	3.5	3.9		1.9	2.0	2.6	2.9		137.8	
144.4						2.1	2.3		144.4	
Lattice Length=40.4ft to 65.6ft								Counterweight		14.3ton
On Outriggers Working Range=360deg										
Telescopic Boom										
114.2ft Boom 146.3ft Boom 146.3ft Boom										
Lattice Length										
40.4ft 40.4ft 65.6ft										
75%										
Radius(ft)									Radius(ft)	
26.2	14.3								26.2	
29.5	13.9								29.5	
32.8	13.2			11.0					32.8	
39.4	12.1			11.0		7.2			39.4	
45.9	11.0			10.9		7.2			45.9	
52.5	10.1			10.3		7.2			52.5	
59.1	9.3			9.6		7.2			59.1	
65.6	8.6			9.0		6.8			65.6	
72.2	7.9			8.5		6.6			72.2	
78.7	7.4			7.9		6.3			78.7	
85.3	6.8			7.5		6.1			85.3	
91.9	6.4			6.6		5.7			91.9	
98.4	6.0			5.4		5.4			98.4	
105.0	5.6			4.4		5.2			105.0	
111.5	5.2			3.5		4.9			111.5	
118.1	4.4			2.8		4.6			118.1	
124.7	3.7			1.2		3.9			124.7	
131.2	3.1					3.3			131.2	
137.8	2.5					2.6			137.8	

Krupp KMK6140

Lifting Capacities For Boom Extension (U.S.tons)										
Extension Length=37.7ft to 118.1ft									Counterweight	23.1ton
On Outriggers Working Range=360deg										
Telescopic Boom 114.2ft Boom										
Extension Length	37.7ft	49.2ft	60.7ft	72.2ft	83.7ft	95.1ft	106.6ft	118.1ft		
	85%	85%	85%	85%	85%	85%	85%	85%		
	0deg	0deg	0deg	0deg	0deg	0deg	0deg	0deg		
Radius(ft)										Radius(ft)
26.2										26.2
29.5	15.1									29.5
32.8	14.9	13.3								32.8
39.4	14.0	12.1	11.7	10.0						39.4
45.9	13.2	11.4	10.8	9.3	7.8	6.6				45.9
52.5	12.5	10.6	9.8	8.6	7.5	6.3	5.5	4.4		52.5
59.1	11.2	9.9	9.0	7.9	7.2	6.0	5.2	4.3		59.1
65.6	10.0	9.0	8.4	7.4	6.8	5.6	5.0	4.1		65.6
72.2	9.3	8.4	7.6	6.8	6.5	5.4	4.7	4.0		72.2
78.7	8.5	7.6	6.9	6.4	6.3	5.2	4.4	3.7		78.7
85.3	7.7	7.3	6.5	6.0	6.1	5.0	4.2	3.6		85.3
91.9	6.9	6.7	6.1	5.5	5.6	4.7	4.0	3.4		91.9
98.4	6.4	6.4	5.6	5.2	5.2	4.4	3.7	3.2		98.4
105.0	5.3	5.7	5.2	4.9	4.9	4.2	3.3	3.1		105.0
111.5	4.2	4.7	4.9	4.4	4.3	4.0	3.2	3.0		111.5
118.1	3.2	3.7	4.1	4.2	4.0	3.9	3.0	2.8		118.1
124.7	2.4	2.9	3.2	3.5	3.5	3.6	2.8	2.6		124.7
131.2	1.7	2.1	2.5	2.8	3.0	3.1	2.6	2.5		131.2
137.8		1.4	1.8	2.0	2.3	2.4	2.4	2.4		137.8
144.4			1.3	1.4	1.7	1.8	2.0	2.1		144.4
150.9						1.2	1.4	1.5		150.9
157.5										157.5
164.0										164.0

Krupp KMK6140

Lifting Capacities For Boom Extension (U.S.tons)										
Extension Length=37.7ft to 118.1ft								Counterweight		23.1ton
On Outriggers		Working Range=360deg								
Telescopic Boom										
146.3ft Boom										
Extension Length	37.7ft	49.2ft	60.7ft	72.2ft	83.7ft	95.1ft	106.6ft	118.1ft		
	85%	85%	85%	85%	85%	85%	85%	85%		
	0deg	0deg	0deg	0deg	0deg	0deg	0deg	0deg		
Radius(ft)									Radius(ft)	
32.8	13.8								32.8	
39.4	13.8	11.1							39.4	
45.9	13.8	11.1	9.4	8.0					45.9	
52.5	13.7	11.1	9.4	8.0	7.1	5.7			52.5	
59.1	12.8	11.1	9.4	8.0	7.1	5.7	5.1	4.0	59.1	
65.6	12.1	10.5	9.4	8.0	7.1	5.7	5.1	4.0	65.6	
72.2	11.2	9.9	8.9	7.8	6.8	5.7	5.1	4.0	72.2	
78.7	10.5	9.1	8.4	7.4	6.5	5.6	5.0	4.0	78.7	
85.3	9.7	8.6	7.6	6.8	6.2	5.4	4.6	4.0	85.3	
91.9	8.6	7.9	6.9	6.5	5.7	5.2	4.4	3.9	91.9	
98.4	7.3	7.4	6.5	6.1	5.4	4.9	4.2	3.6	98.4	
105.0	6.0	6.2	6.1	5.6	5.1	4.5	4.0	3.5	105.0	
111.5	4.9	5.1	5.3	5.3	4.7	4.2	3.7	3.3	111.5	
118.1	3.9	4.1	4.3	4.4	4.4	4.0	3.5	3.2	118.1	
124.7	3.0	3.2	3.5	3.6	3.9	3.6	3.2	3.1	124.7	
131.2	2.3	2.5	2.8	2.9	3.1	3.2	3.1	2.9	131.2	
137.8	1.5	1.8	2.0	2.1	2.4	2.5	2.8	2.8	137.8	
144.4		1.2	1.4	1.5	1.9	1.9	2.1	2.2	144.4	
150.9					1.3	1.3	1.5	1.7	150.9	
157.5									157.5	
164.0									164.0	
170.6									170.6	
177.2									177.2	

Krupp KMK6140

Lifting Capacities For Boom Extension (U.S.tons)										
Extension Length=37.7ft to 118.1ft							Counterweight			23.1ton
On Outriggers Working Range=360deg										
Telescopic Boom										
114.2ft Boom										
Extension Length	37.7ft	49.2ft	60.7ft	72.2ft	83.7ft	95.1ft	106.6ft	118.1ft		
	85%	85%	85%	85%	85%	85%	85%	85%		
	20deg	20deg	20deg	20deg	20deg	20deg	20deg	20deg		
Radius(ft)										Radius(ft)
26.2										26.2
29.5										29.5
32.8										32.8
39.4	11.4									39.4
45.9	10.8									45.9
52.5	10.3	8.6								52.5
59.1	9.8	8.2	6.4							59.1
65.6	9.3	7.7	6.1	5.5						65.6
72.2	8.8	7.4	5.6	5.3	4.7					72.2
78.7	8.4	7.0	5.4	5.1	4.4	3.6				78.7
85.3	7.9	6.7	5.2	4.9	4.2	3.5	2.8			85.3
91.9	7.6	6.4	5.0	4.7	4.1	3.2	2.6	2.0		91.9
98.4	6.8	6.2	4.7	4.4	3.9	3.1	2.5	1.9		98.4
105.0	6.1	6.0	4.4	4.2	3.7	3.0	2.4	1.8		105.0
111.5	4.9	5.5	4.3	4.1	3.6	2.9	2.3	1.7		111.5
118.1	3.7	4.4	4.1	4.0	3.5	2.8	2.1	1.7		118.1
124.7	2.8	3.5	4.0	3.9	3.3	2.6	2.1	1.5		124.7
131.2	1.9	2.6	3.2	3.7	3.2	2.5	2.0	1.5		131.2
137.8		1.9	2.4	2.9	3.1	2.5	1.9	1.4		137.8
144.4			1.7	2.1	2.5	2.4	1.9	1.4		144.4
150.9				1.5	1.9	2.3	1.8	1.3		150.9
157.5						1.7	1.7	1.3		157.5
164.0								1.2		164.0

Krupp KMK6140

Lifting Capacities For Boom Extension (U.S.tons)										
Extension Length=37.7ft to 118.1ft								Counterweight		23.1ton
On Outriggers		Working Range=360deg								
Telescopic Boom										
146.3ft Boom										
Extension Length	37.7ft	49.2ft	60.7ft	72.2ft	83.7ft	95.1ft	106.6ft	118.1ft		
	85%	85%	85%	85%	85%	85%	85%	85%		
	20deg	20deg	20deg	20deg	20deg	20deg	20deg	20deg		
<u>Radius(ft)</u>									<u>Radius(ft)</u>	
32.8									32.8	
39.4									39.4	
45.9	11.4								45.9	
52.5	10.9								52.5	
59.1	10.5	8.7							59.1	
65.6	10.1	8.4	6.4						65.6	
72.2	9.7	7.9	6.2	5.6					72.2	
78.7	9.3	7.7	5.8	5.4	4.7				78.7	
85.3	8.8	7.4	5.6	5.2	4.5	3.7			85.3	
91.9	8.5	6.9	5.4	5.1	4.4	3.6	2.9		91.9	
98.4	8.0	6.7	5.2	4.9	4.2	3.3	2.8	2.0	98.4	
105.0	6.7	6.4	5.0	4.7	4.0	3.2	2.6	2.0	105.0	
111.5	5.5	6.1	4.9	4.5	3.9	3.1	2.5	1.9	111.5	
118.1	4.5	5.1	4.7	4.3	3.8	3.0	2.4	1.9	118.1	
124.7	3.6	4.1	4.4	4.2	3.7	2.9	2.4	1.8	124.7	
131.2	2.8	3.2	3.6	4.0	3.6	2.8	2.3	1.7	131.2	
137.8	2.0	2.5	2.9	3.2	3.4	2.7	2.2	1.6	137.8	
144.4	1.4	1.8	2.1	2.5	2.9	2.6	2.1	1.5	144.4	
150.9		1.2	1.5	1.9	2.2	2.5	2.0	1.5	150.9	
157.5				1.3	1.7	1.9	2.0	1.4	157.5	
164.0						1.4	1.7	1.4	164.0	
170.6							1.2	1.3	170.6	
177.2									177.2	

Lifting Capacities For Luffing Jib (U.S.tons)										
Boom Length=80.0ft									Counterweight	23.1ton
On Outriggers		Working Range=360deg								
Luffing Jib										
	45.9ft	57.4ft	68.9ft	80.4ft	91.9ft	103.3ft	114.8ft	126.3ft		
	75%	75%	75%	75%	75%	75%	75%	75%		
Radius(ft)									Radius(ft)	
26.2	41.2								26.2	
29.5	41.2	34.8							29.5	
32.8	41.2	34.8	29.3						32.8	
39.4	39.4	34.8	29.3	24.5	20.5				39.4	
45.9	33.1	32.7	29.3	24.5	20.5	17.9	15.3		45.9	
52.5		28.7	27.7	24.5	20.5	17.9	15.3	13.1	52.5	
59.1		24.5	24.6	23.7	20.5	17.9	15.3	13.1	59.1	
65.6			21.6	21.2	20.5	17.9	15.3	13.1	65.6	
72.2				18.8	18.5	17.9	15.3	13.1	72.2	
78.7				17.0	16.5	16.2	15.3	12.1	78.7	
85.3					15.0	14.7	14.3	11.1	85.3	
91.9						13.2	13.1	10.4	91.9	
98.4						12.1	11.9	9.5	98.4	
105.0							11.0	8.7	105.0	
111.5								8.0	111.5	
118.1								7.4	118.1	
124.7									124.7	
131.2									131.2	
	I			1					I	
T1-T2-T3	II			0					II T1-T2-T3	
	III			0					III	

Lifting Capacities For Luffing Jib (U.S.tons)										
Boom Length=114.2ft									Counterweight	23.1ton
On Outriggers		Working Range=360deg								
Luffing Jib										
	45.9ft	57.4ft	68.9ft	80.4ft	91.9ft	103.3ft	114.8ft	126.3ft		
	75%	75%	75%	75%	75%	75%	75%	75%		
Radius(ft)									Radius(ft)	
26.2									26.2	
29.5									29.5	
32.8	20.6								32.8	
39.4	20.6	17.2	15.4						39.4	
45.9	20.6	17.2	15.4	13.6					45.9	
52.5	20.6	17.2	15.0	13.6	11.7	10.1			52.5	
59.1		17.2	14.6	13.0	11.5	10.1	8.8	6.6	59.1	
65.6			14.6	13.0	11.0	9.7	8.8	6.6	65.6	
72.2			14.6	12.5	10.8	9.7	8.8	6.6	72.2	
78.7				12.5	10.8	9.7	8.4	6.6	78.7	
85.3				12.5	10.8	9.3	8.4	6.6	85.3	
91.9					10.8	9.3	7.9	6.6	91.9	
98.4						9.3	7.9	6.6	98.4	
105.0						9.3	7.9	6.6	105.0	
111.5							7.9	6.6	111.5	
118.1							7.9	6.6	118.1	
124.7								6.4	124.7	
131.2									131.2	
	I			1					I	
T1-T2-T3	II			1					II T1-T2-T3	
	III			0					III	

Krupp KMK6140

Lifting Capacities For Luffing Jib (U.S.tons)									
Boom Length=146.3ft								Counterweight 23.1ton	
On Outriggers		Working Range=360deg							
Luffing Jib									
	45.9ft	57.4ft	68.9ft	80.4ft	91.9ft	103.3ft	114.8ft	126.3ft	
	75%	75%	75%	75%	75%	75%	75%	75%	
Radius(ft)									Radius(ft)
26.2									26.2
29.5									29.5
32.8									32.8
39.4	9.7								39.4
45.9	9.7	8.8							45.9
52.5	9.7	8.4	7.3	6.2					52.5
59.1	9.7	8.0	7.1	6.2	5.1	4.2			59.1
65.6		8.0	6.8	5.8	5.1	4.2	3.1		65.6
72.2			6.7	5.6	4.9	4.2	3.1	2.5	72.2
78.7			6.7	5.6	4.9	4.0	3.1	2.5	78.7
85.3				5.6	4.6	4.0	3.1	2.5	85.3
91.9				5.6		3.9	3.1	2.5	91.9
98.4						3.9	3.1	2.5	98.4
105.0						3.9	3.1	2.5	105.0
111.5						3.9	3.1	2.5	111.5
118.1							3.1	2.5	118.1
124.7								2.5	124.7
131.2								2.5	131.2
	I			1					I
T1-T2-T3	II			1					II T1-T2-T3
	III			1					III