

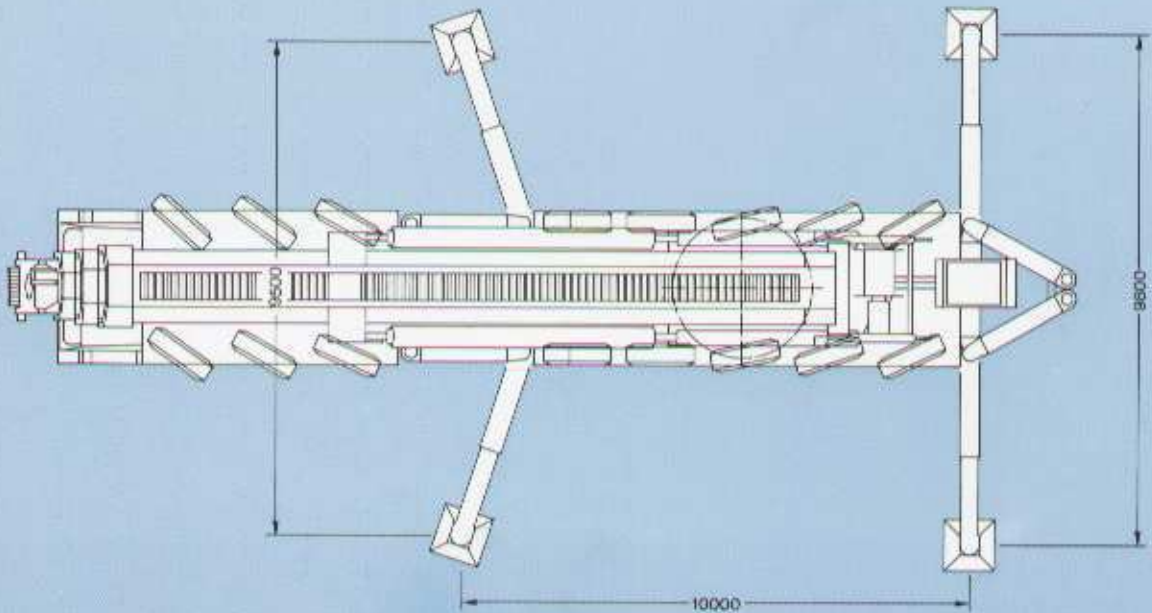
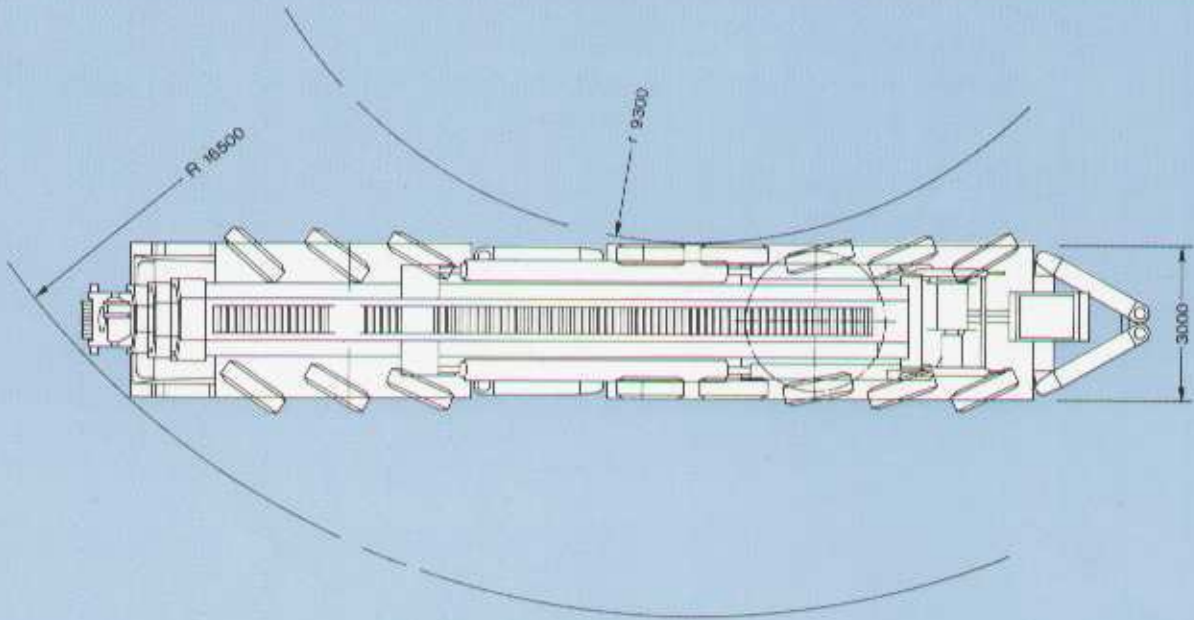
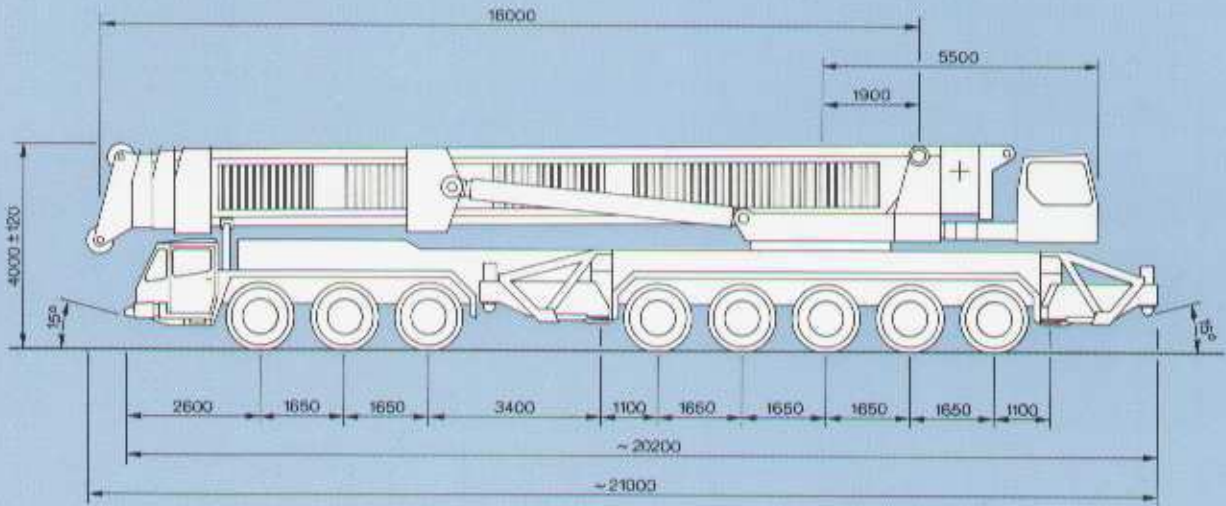
# KMK 8400

## Mobilkran



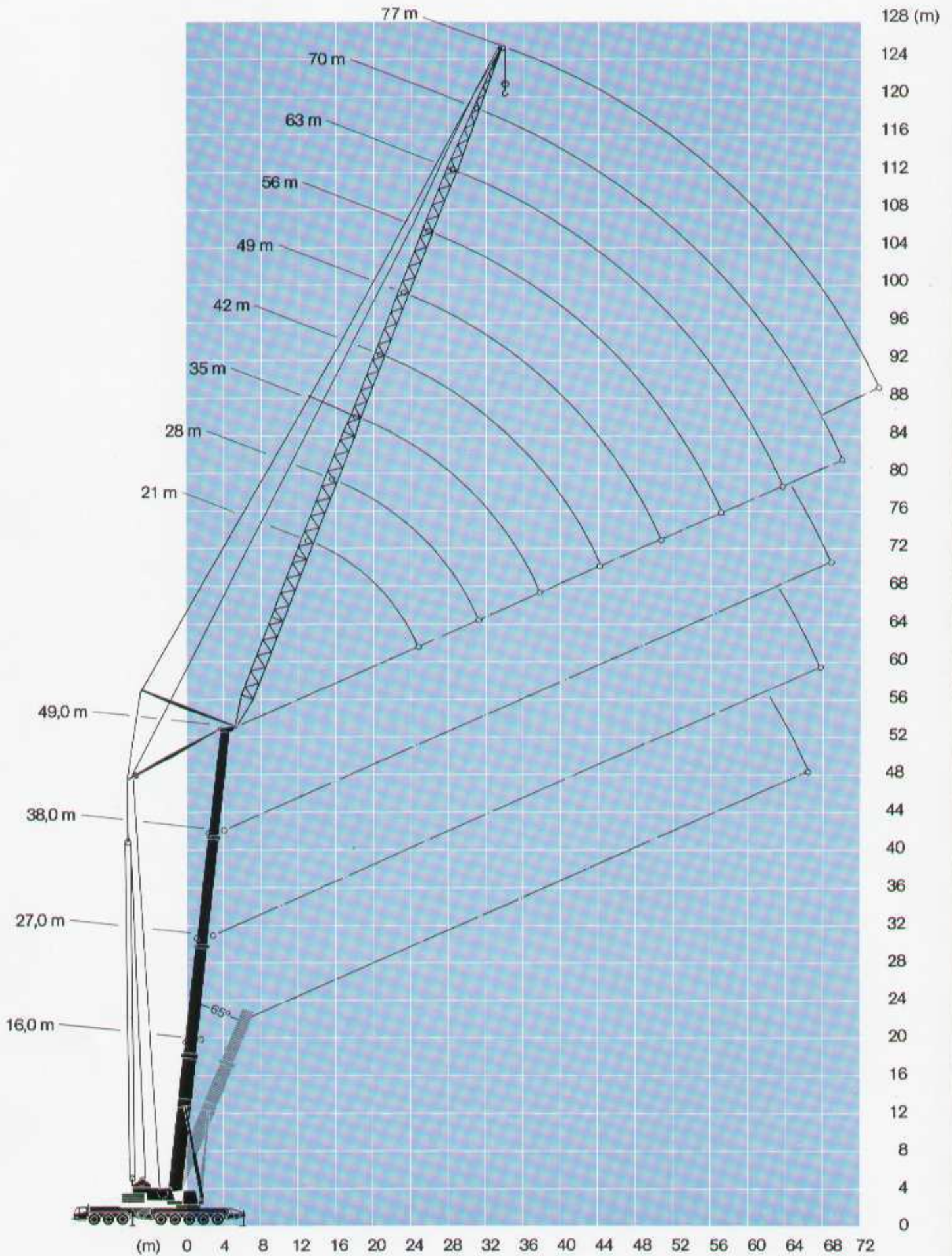
 **KRUPP**

# Dimensioni



# Raggio d'operazione / Altezze di sollevamento

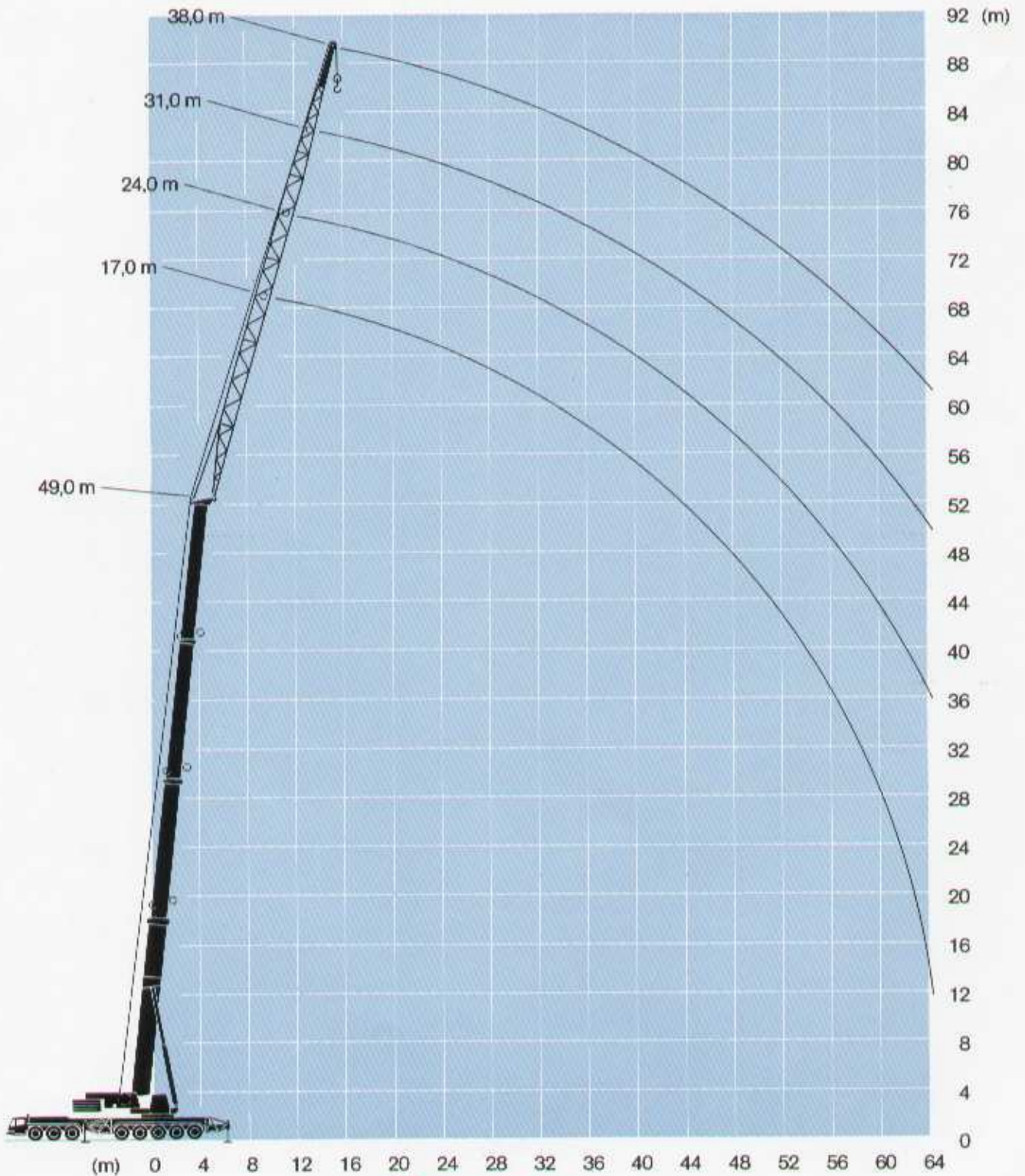
Bracetto variabile



 KRUPP

# Raggio d'operazione / Altezze di sollevamento

Prolunghe fisse



 KRUPP

# Portate in tonn con il braccio telescopico



16,0 - 49,0 m



360°



90t

Raggio m	16,0 m		27,0 m		38,0 m		49,0 m	Raggio m
	75%*	75%**	75%	75%	75%	75%	75%	
3	400,0	310,0						3
4	300,0	264,0	210,0	160,0				4
5	250,0	230,0	183,0	147,0				5
6	225,0	202,0	162,0	137,0	122,0	94,0		6
7	200,0	180,0	145,0	128,0	111,0	86,0		7
8	175,0	163,0	131,0	120,0	102,0	78,0	72,0	8
9	155,0	148,0	119,0	112,0	93,0	72,0	68,0	9
10	140,0	135,0	110,0	106,0	86,0	68,0	65,0	10
12	113,0	106,0	93,0	95,0	74,0	60,0	59,0	12
14			80,0	83,0	66,0	55,0	54,0	14
16			70,0	73,0	59,0	52,0	49,0	16
18			62,0	65,0	54,0	48,0	44,0	18
20			51,0	56,0	49,0	45,0	40,0	20
22			44,0	48,0	44,0	42,0	37,0	22
24			38,0	41,0	37,0	38,0	34,0	24
26					32,0	34,0	31,0	26
28					28,0	30,0	29,0	28
30					25,0	27,0	27,0	30
32					24,0	25,0	24,0	32
34					21,0	24,0	23,0	34
36							21,0	36
38							19,0	38
40							17,0	40
42							15,0	42
44							14,0	44
46							12,0	46
T1	0	50	0	100	0	100	T1	
<b>%</b> T2	0	50	50	100	100	100	<b>%</b> T2	
T3	0	0	50	0	100	100	T3	

\*\* Base d'appoggio 8,0 / 7,8 x 9,7 m



16,0 - 49,0 m



360°



42t

Raggio m	16,0 m	27,0 m		38,0 m		49,0 m	Raggio m
	75%	75%	75%	75%	75%	75%	
3	310,0						3
4	264,0	210,0	160,0				4
5	230,0	184,0	147,0				5
6	202,0	163,0	137,0	122,0	94,0		6
7	173,8	145,0	128,0	110,0	85,0		7
8	131,1	131,0	120,0	101,0	78,0	72,0	8
9	102,1	118,0	112,0	93,0	72,0	68,7	9
10	87,1	104,0	106,0	86,0	68,0	65,0	10
12	58,3	76,0	82,0	74,0	60,0	59,0	12
14		57,0	62,0	57,0	55,0	54,0	14
16		44,0	48,9	44,0	50,1	47,0	16
18		35,0	39,5	34,8	40,6	37,7	18
20		28,0	32,6	28,1	33,6	30,9	20
22		23,0	27,2	22,8	28,2	25,6	22
24		18,7	22,9	18,6	23,9	21,3	24
26				15,2	20,4	17,8	26
28				12,4	17,5	14,9	28
30				10,0	15,0	12,5	30
32				8,0	12,9	10,5	32
34				6,3	11,1	8,7	34
36						7,2	36
38						5,9	38
40						4,7	40
42						3,7	42
44						2,7	44
T1	0	50	0	100	0	100	T1
<b>%</b> T2	0	50	50	100	100	100	<b>%</b> T2
T3	0	0	50	0	100	100	T3

# Portate in tonn con le prolunghe fisse a traliccio



49,0 m



17,0 - 38,0 m



360°



Roggio	Braccio telescopico				Roggio	
	49,0 m					
	17,0 m 75% 10°	24,0 m 75% 10°	31,0 m 75% 10°	38,0 m 75% 10°		
m					m	
14	22,0					14
16	21,5					16
18	21,0	17,0				18
20	20,0	16,0				20
22	19,0	15,4	13,0			22
24	18,0	14,8	12,0			24
26	17,0	14,2	11,0	9,0		26
28	16,0	13,6	10,3	8,5		28
30	15,0	13,0	10,0	8,2		30
32	14,0	12,4	9,7	8,0		32
34	13,0	11,5	9,2	7,7		34
36	12,0	10,7	8,8	7,3		36
38	11,0	9,5	8,2	6,7		38
40	10,5	8,7	7,8	6,0		40
42	10,0	8,5	7,2	5,7		42
44	9,5	8,3	6,8	5,0		44
46	9,0	7,8	6,0	4,5		46
48	8,5	7,4	5,5	4,2		48
50	8,0	7,0	5,2	4,0		50
52		6,6	4,9	3,7		52
54		6,2	4,6	3,5		54
56		5,8	4,4	3,1		56
58		5,4	4,2	2,8		58
60		5,0	4,0	2,5		60
T1			100			T1
% T2			100			T2 %
T3			100			T3

# Portate in tonn con il braccetto variabile



21,0 m



360°

90 t

Raggio	Braccio telescopico							Raggio
	16,0 m	21,5 m	27,0 m	32,5 m	38,0 m	43,5 m	49,0 m	
m	75 %	75 %	75 %	75 %	75 %	75 %	75 %	m
12	90,0	79,0	68,0					
14	85,0	79,0	68,0	58,0	47,0	38,0		
16	78,0	74,0	68,0	58,0	47,0	38,0	26,0	16
18	71,0	68,0	66,0	57,0	47,0	37,0	26,0	18
20	67,0	63,0	60,0	53,0	47,0	36,0	26,0	20
22			55,0	50,0	46,0	36,0	26,0	22
24					44,0	36,0	26,0	24



28,0 m



360°

90 t

Raggio	Braccio telescopico							Raggio
	16,0 m	21,5 m	27,0 m	32,5 m	38,0 m	43,5 m	49,0 m	
m	75 %	75 %	75 %	75 %	75 %	75 %	75 %	m
12	80,0							12
14	80,0	67,0	57,0	47,0				14
16	75,0	67,0	57,0	47,0	37,0	29,0		16
18	70,0	63,0	56,0	47,0	37,0	29,0	22,0	18
20	63,0	58,0	53,0	46,0	37,0	29,0	22,0	20
22	57,0	53,0	50,0	44,0	37,0	29,0	22,0	22
24	51,0	49,0	47,0	43,0	37,0	29,0	22,0	24
26	46,0	43,0	42,0	40,0	37,0	29,0	22,0	26
28		41,0	41,0	39,0	37,0	29,0	22,0	28



35,0 m



360°

90 t

Raggio	Braccio telescopico							Raggio
	16,0 m	21,5 m	27,0 m	32,5 m	38,0 m	43,5 m	49,0 m	
m	75 %	75 %	75 %	75 %	75 %	75 %	75 %	m
16	62,0							16
18	60,0	50,0	42,0	35,0				18
20	58,0	47,0	42,0	35,0	28,0	22,0	15,0	20
22	56,0	45,0	42,0	35,0	28,0	22,0	15,0	22
24	51,0	42,0	40,0	35,0	28,0	22,0	15,0	24
26	46,0	40,0	38,0	34,0	28,0	22,0	15,0	26
28	41,0	38,0	36,0	33,0	28,0	22,0	15,0	28
30	38,0	35,0	34,0	32,0	28,0	22,0	15,0	30
32	34,0	33,0	33,0	31,0	28,0	22,0	15,0	32
34		32,0	31,0	30,0	28,0	22,0	15,0	34
36					28,0	22,0		36



42,0 m



360°

90 t

Raggio	Braccio telescopico							Raggio
	16,0 m	21,5 m	27,0 m	32,5 m	38,0 m	43,5 m	49,0 m	
m	75 %	75 %	75 %	75 %	75 %	75 %	75 %	m
18	45,0							18
20	45,0	38,0	35,0	28,0	23,0			20
22	43,0	36,0	33,0	28,0	23,0	18,0	13,0	22
24	41,0	35,0	32,0	27,0	22,0	17,5	13,0	24
26	40,0	33,0	31,0	26,0	22,0	17,0	13,0	26
28	39,0	32,0	30,0	25,0	22,0	17,0	13,0	28
30	37,0	31,0	29,0	25,0	22,0	17,0	13,0	30
32	34,0	30,0	28,0	24,0	21,0	16,0	13,0	32
34	31,0	28,0	26,0	23,0	21,0	16,0	13,0	34
36	29,0	26,0	25,0	22,0	21,0	15,0	13,0	36
38	27,0	24,0	24,0	21,0	21,0	15,0	13,0	38
40	25,0	24,0	23,0	21,0	20,0	14,0	13,0	40
42			22,0	21,0	20,0	14,0	12,0	42
44						14,0		44

# Portate in tonn con il braccetto variabile



49,0 m



360°

90 t

Raggio	Braccio telescopico							Raggio
	16,0 m	21,5 m	27,0 m	32,5 m	38,0 m	43,5 m	49,0 m	
m	75 %	75 %	75 %	75 %	75 %	75 %	75 %	m
20	34,0	30,0						20
22	33,0	30,0	27,0	22,0	19,0			22
24	32,0	29,0	27,0	22,0	19,0	14,0	10,0	24
26	31,0	28,0	26,0	22,0	19,0	14,0	10,0	26
28	30,0	27,0	25,0	22,0	19,0	14,0	10,0	28
30	29,0	26,0	24,0	21,0	19,0	14,0	10,0	30
32	28,0	25,0	23,0	21,0	18,0	13,0	10,0	32
34	27,0	25,0	23,0	20,0	18,0	13,0	10,0	34
36	26,0	24,0	22,0	20,0	18,0	13,0	10,0	36
38	24,0	23,0	22,0	20,0	18,0	13,0	10,0	38
40	23,0	22,0	21,0	19,0	18,0	13,0	10,0	40
42	22,0	21,0	20,0	18,0	17,0	12,0	10,0	42
44	21,0	20,0	19,0	18,0	17,0	12,0	10,0	44
46	20,0	19,0	19,0	18,0	17,0	12,0	10,0	46
48			18,0	17,0	17,0	12,0	10,0	48



56,0 m



360°

90 t

Raggio	Braccio telescopico							Raggio
	16,0 m	21,5 m	27,0 m	32,5 m	38,0 m	43,5 m	49,0 m	
m	75 %	75 %	75 %	75 %	75 %	75 %	75 %	m
20	27,0	25,0						20
22	26,0	24,0		17,0	14,0			22
24	25,0	23,0	21,0	17,0	14,0	11,0	8,0	24
26	25,0	22,0	21,0	17,0	14,0	11,0	8,0	26
28	24,0	22,0	20,0	17,0	14,0	11,0	8,0	28
30	23,0	22,0	20,0	17,0	14,0	11,0	8,0	30
32	23,0	21,0	19,0	16,0	14,0	11,0	8,0	32
34	22,0	20,0	19,0	16,0	14,0	11,0	8,0	34
36	21,0	20,0	19,0	16,0	14,0	11,0	8,0	36
38	21,0	19,0	18,0	16,0	14,0	11,0	8,0	38
40	20,0	19,0	18,0	16,0	14,0	11,0	8,0	40
42	19,0	18,0	17,0	15,0	14,0	11,0	8,0	42
44	19,0	18,0	17,0	15,0	14,0	11,0	8,0	44
46	18,0	18,0	17,0	15,0	14,0	11,0	8,0	46
48	17,0	17,0	16,0	15,0	14,0	11,0	8,0	48
50	17,0	16,0	16,0	15,0	14,0	11,0	8,0	50
52	16,0	15,0	15,0	14,0	14,0	11,0	8,0	52
54			15,0	14,0	14,0	11,0	8,0	54
56						11,0	8,0	56



# Portate in tonn con il braccetto variabile



63,0 m



360°

90 t

Raggio	Braccio telescopico							Raggio
	16,0 m	21,5 m	27,0 m	32,5 m	38,0 m	43,5 m	49,0 m	
m	75 %	75 %	75 %	75 %	75 %	75 %	75 %	m
24	20,0	18,0						24
26	19,0	17,0	16,0	13,0	10,5			26
28	19,0	17,0	16,0	13,0	10,5	8,0	6,0	28
30	18,0	16,0	16,0	13,0	10,5	8,0	6,0	30
32	18,0	16,0	16,0	13,0	10,5	8,0	6,0	32
34	18,0	16,0	16,0	13,0	10,5	8,0	6,0	34
36	17,0	16,0	15,0	12,0	10,5	8,0	6,0	36
38	17,0	16,0	15,0	12,0	10,5	8,0	6,0	38
40	16,0	15,0	15,0	12,0	10,5	8,0	6,0	40
42	16,0	15,0	15,0	12,0	10,5	8,0	6,0	42
44	16,0	15,0	14,0	12,0	10,5	8,0	6,0	44
46	16,0	15,0	14,0	12,0	10,5	8,0	6,0	46
48	15,0	14,0	14,0	12,0	10,5	8,0	6,0	48
50	15,0	14,0	14,0	12,0	10,5	8,0	6,0	50
52	14,0	13,0	13,0	11,0	10,5	8,0	6,0	52
54	14,0	13,0	13,0	11,0	10,5	8,0	6,0	54
56	14,0	13,0	13,0	11,0	10,5	8,0	6,0	56
58	14,0	13,0	12,0	11,0	10,5	8,0	6,0	58
60	13,0	12,0	12,0	11,0	10,5	8,0	6,0	60
62			12,0	11,0	10,5	8,0	6,0	62
64					8,0			64



70,0 m



360°

90 t

Raggio	Braccio telescopico							Raggio
	16,0 m	21,5 m	27,0 m	32,5 m	38,0 m	43,5 m	49,0 m	
m	75 %	75 %	75 %	75 %	75 %	75 %	75 %	m
28	14,0	13,0						28
30	14,0	13,0	12,0	10,5	9,0			30
32	14,0	13,0	12,0	10,0	9,0	6,5	4,5	32
34	14,0	13,0	12,0	10,0	9,0	6,5	4,5	34
36	13,0	12,0	12,0	10,0	9,0	6,5	4,5	36
38	13,0	12,0	12,0	10,0	9,0	6,5	4,5	38
40	13,0	12,0	12,0	10,0	9,0	6,5	4,5	40
42	13,0	12,0	12,0	10,0	9,0	6,5	4,5	42
44	13,0	12,0	12,0	10,0	9,0	6,5	4,5	44
46	13,0	12,0	12,0	10,0	9,0	6,5	4,5	46
48	13,0	12,0	12,0	9,0	9,0	6,5	4,5	48
50	13,0	12,0	12,0	9,0	9,0	6,5	4,5	50
52	12,0	12,0	12,0	9,0	9,0	6,5	4,5	52
54	12,0	12,0	12,0	9,0	9,0	6,5	4,5	54
56	12,0	12,0	12,0	9,0	9,0	6,5	4,5	56
58	12,0	11,0	11,0	9,0	9,0	6,5	4,5	58
60	12,0	11,0	11,0	9,0	9,0	6,5	4,5	60
62	11,0	11,0	11,0	9,0	8,5	6,5	4,5	62
64	11,0	11,0	11,0	9,0	8,5	6,5	4,5	64

# Portate in tonn con il braccetto variabile



77,0 m



360°

90 t

Raggio	Braccio telescopico						Raggio
	16,0 m	21,5 m	27,0 m	32,5 m	38,0 m	43,5 m	
m	75 %	75 %	75 %	75 %	75 %	75 %	m
32	8,5	7,6					32
34	8,5	7,6	6,8	5,5	4,2		34
36	8,5	7,6	6,8	5,5	4,2	3,5	36
38	8,5	7,6	6,8	5,5	4,2	3,5	38
40	8,5	7,6	6,8	5,5	4,2	3,0	40
42	8,5	7,6	6,8	5,5	4,2	3,0	42
44	8,5	7,6	6,8	5,5	4,2	3,0	44
46	8,5	7,6	6,8	5,5	4,2	3,0	46
48	8,5	7,6	6,8	5,5	4,2	3,0	48
50	8,5	6,8	6,8	5,5	4,2	3,0	50
52	8,1	6,8	6,8	5,5	4,2	3,0	52
54	7,6	6,8	6,8	5,5	4,2	3,0	54
56	7,6	6,8	6,8	5,5	4,2	3,0	56
58	7,6	9,0	6,3	5,5	4,2	3,0	58
60	6,8	6,8	6,3	5,5	4,2	3,0	60
62	6,8	6,8	6,3	5,5	4,2	3,0	62
64	6,8	6,8	6,3	5,5	4,2	3,0	64
66	6,8	6,8	6,3	5,5	4,2	3,0	66
68	6,8	6,8	6,3	5,5	4,2	3,0	68
70	6,8	6,8	6,3	5,5	4,2	3,0	70

# Portate in tonn con il braccetto variabile



21,0 m



360°

90t

Raggio	Braccio telescopico 65°							Raggio
m	16,0 m 75%	21,5 m 75%	27,0 m 75%	32,5 m 75%	38,0 m 75%	43,5 m 75%	49,0 m 75%	m
20	62,0	60,0						20
22	55,0	52,0						22
24	49,0	46,0	43,0					24
26	44,0	42,0	39,0	38,0				26
28		38,0	36,0	34,0	32,0			28
30			33,0	31,0	29,0	24,0		30
32				29,0	27,0	23,0	18,0	32
34					25,0	21,0	18,0	34
36						19,0	17,0	36
38							17,0	38
40							16,0	40



28,0 m



360°

90t

Raggio	Braccio telescopico 65°							Raggio
m	16,0 m 75%	21,5 m 75%	27,0 m 75%	32,5 m 75%	38,0 m 75%	43,5 m 75%	49,0 m 75%	m
22	54,0							22
24	48,0							24
26	43,0	41,0						26
28	40,0	37,0	35,0					28
30	36,0	34,0	32,0	30,0				30
32	33,0	31,0	30,0	28,0	26,0			32
34		29,0	28,0	26,0	24,0			34
36			25,0	24,0	22,0	20,0		36
38				22,0	21,0	19,0	15,0	38
40					20,0	18,0	15,0	40
42					18,0	17,0	14,0	42
44						15,0	14,0	44
46							13,0	46



35,0 m



360°

90t

Raggio	Braccio telescopico 65°							Raggio
m	16,0 m 75%	21,5 m 75%	27,0 m 75%	32,5 m 75%	38,0 m 75%	43,5 m 75%	49,0 m 75%	m
30	36,0							30
32	33,0	35,0						32
34	31,0	28,0	28,0					34
36	29,0	26,0	25,0	23,0				36
38	27,0	24,0	24,0	21,0	21,0			38
40		22,0	22,0	20,0	20,0			40
42		21,0	21,0	18,0	18,0	15,0		42
44			19,0	17,0	17,0	14,0	11,0	44
46				16,0	16,0	14,0	11,0	46
48					15,0	13,0	11,0	48
50						12,0	11,0	50
52							11,0	52

# Portate in tonn con il braccetto variabile



42,0 m



360°



90 t

Raggio	Braccio telescopico 65°							Raggio
	16,0 m 75%	21,5 m 75%	27,0 m 75%	32,5 m 75%	38,0 m 75%	43,5 m 75%	49,0 m 75%	
m								m
36	29,0							36
38	27,0	24,0						38
40	25,0	22,0	22,0					40
42	23,0	21,0	21,0	18,0				42
44	22,0	20,0	19,0	17,0	17,0			44
46	21,0	18,0	18,0	16,0	16,0	14,0		46
48		17,0	17,0	15,0	15,0	13,0	9,0	48
50			16,0	14,0	14,0	12,0	9,0	50
52				13,0	13,0	12,0	8,0	52
54				12,0	13,0	11,0	8,0	54
56					12,0	10,0	8,0	56
58						9,0	7,0	58
60							7,0	60



49,0 m



360°



90 t

Raggio	Braccio telescopico 65°							Raggio
	16,0 m 75%	21,5 m 75%	27,0 m 75%	32,5 m 75%	38,0 m 75%	43,5 m 75%	49,0 m 75%	
m								m
42	23,0							42
44	21,0	19,0						44
46	20,0	18,0	18,0					46
48	19,0	17,0	17,0	14,0				48
50	18,0	16,0	15,0	13,0	13,0			50
52	17,0	15,0	14,0	12,0	12,0	10,0	6,0	52
54	16,0	14,0	14,0	11,0	12,0	10,0	6,0	54
56		13,0	13,0	11,0	11,0	10,0	5,0	56
58			12,0	11,0	11,0	9,0	5,0	58
60				10,0	10,0	9,0	5,0	60
62					9,0	8,0	5,0	62
64						8,0	5,0	64
66							5,0	66



56,0 m



360°



90 t

Raggio	Braccio telescopico 65°							Raggio
	16,0 m 75%	21,5 m 75%	27,0 m 75%	32,5 m 75%	38,0 m 75%	43,5 m 75%	49,0 m 75%	
m								m
44	20,0							44
46	10,0	16,0						46
48	18,0	15,0	16,0					48
50	17,0	14,0	14,0	12,0				50
52	16,0	14,0	13,0	11,0	12,0			52
54	15,0	13,0	13,0	10,0	11,0	8,0		54
56	14,0	12,0	12,0	10,0	10,0	7,0	5,0	56
58	13,0	12,0	11,0	10,0	10,0	7,0	5,0	58
60	12,0	11,0	11,0	9,0	9,0	6,0	5,0	60
62		10,0	10,0	9,0	8,0	6,0	5,0	62
64		10,0	9,0	8,0	8,0	6,0	4,0	64
66			9,0	8,0	8,0	6,0	4,0	66
68				7,0	7,0	6,0	4,0	68
70					6,0	5,0	4,0	70
72						5,0	4,0	72
74							4,0	74

# Portate in tonn con il braccetto variabile



63,0 m



360°

90t

Raggio	Braccio telescopico 65°							Raggio
m	16,0 m 75%	21,5 m 75%	27,0 m 75%	32,5 m 75%	38,0 m 75%	43,5 m 75%	49,0 m 75%	m
48	15,0							48
50	15,0	13,0						50
52	15,0	13,0	13,0					52
54	14,0	12,0	13,0	10,0				54
56	14,0	12,0	12,0	10,0	8,0			56
58	13,0	12,0	11,0	9,0	8,0	5,0		58
60	13,0	11,0	11,0	9,0	8,0	5,0	3,0	60
62	12,0	10,0	10,0	9,0	8,0	5,0	3,0	62
64	12,0	10,0	9,0	8,0	8,0	5,0	3,0	64
66	11,0	9,0	9,0	8,0	8,0	5,0	3,0	66
68	10,0	9,0	9,0	7,0	7,0	5,0	3,0	68
70		8,0	8,0	7,0	6,0	5,0	3,0	70
72			7,0	6,0	6,0	4,0	3,0	72
74				6,0	5,0	4,0	3,0	74
76					5,0	4,0	3,0	76
78						4,0	3,0	78
80							3,0	80



70,0 m



360°

90t

Raggio	Braccio telescopico 65°							Raggio
m	16,0 m 75%	21,5 m 75%	27,0 m 75%	32,5 m 75%	38,0 m 75%	43,5 m 75%	49,0 m 75%	m
52	12,0							52
54	11,0	10,0						54
56	11,0	10,0	9,0					56
58	11,0	10,0	9,0	8,0				58
60	10,0	9,0	9,0	6,0				60
62	10,0	9,0	8,0	7,0	6,0	4,0		62
64	9,0	8,0	8,0	7,0	6,0	4,0	2,0	64
66	9,0	8,0	8,0	7,0	6,0	4,0	2,0	66
68	8,0	8,0	7,0	6,0	6,0	4,0	2,0	68
70	7,0	7,0	7,0	6,0	6,0	4,0	2,0	70
72	7,0	7,0	7,0	6,0	5,0	4,0	2,0	72
74	7,0	7,0	6,0	5,0	5,0	4,0	2,0	74
76		7,0	6,0	5,0	5,0	4,0	2,0	76
78		6,0	6,0	5,0	4,0	3,0	2,0	78
80			5,0	4,0	4,0	3,0	2,0	80
82				4,0	3,0	3,0	2,0	82
84					3,0	3,0	2,0	84
86						2,0	2,0	86
88							2,0	88

# Pesi / Velocità



Asi	1	2	3	4	5	6	7	8	Peso totale
t	12	12	12	12	12	12	12	12	96



Portata in Tonn	Pulegge	Tiri fune	Pesi in kg.
200	9	2 - 19	3000
160	7	2 - 15	3000
100	5	2 - 11	2180
40	1	1 - 3	820



Rapporti	1	2	3	4	5	R	Pendenza max superabile
Su strada km/h	15,7	29,5	39,3	51,4	65,0	18,6	
Fuori strada km/h	9,2	17,3	23,1	30,2	38,4	10,2	25%
Pneumatici	14.00 R 24						



Azionamento	Progressivamente variabile	Diámetro / Lunghezza fune	Sforzo max. a tiro diretto
Argano principale	0 - 120 m/min tiro diretto	25 mm / 500 m	125 kN
Argano ausiliario	0 - 90 m/min a tiro diretto	25 mm / 520 m	125 kN
Rotazione	0 - 1 min <sup>-1</sup>		
Sollevamento braccio	circa 130 sec. fino - 0,5° a + 84°		
Movimento telescopico	circa 320 sec. per passare da 13,2 m a 42,3 m		



Braccio telescopico



Stabilizzatori fuoriusciti



Raggio d'operazione



Carico per asse



Gancio di sollevamento



Movimenti della gru



Velocità



Prolunghe fisse

## Carro

<b>Telaio:</b>	Speciale KRUPP a 8 assi, costruzione scatolata antitorzionale in acciaio ad alta resistenza.
<b>Stabilizzatori:</b>	4 travi telescopiche con cilindri verticali e piastre di appoggio. Comandi idraulici indipendenti dei movimenti verticali e orizzontali sistemati sui due lati del carro. Indicatore di livello a bolla.
<b>Motore:</b>	2 motori Diesel Mercedes-Benz OM 447HA, 6 cilindri montati in tandem, raffreddati ad acqua 206 kW (280 CV) a 2200 giri/min. Coppia max 1226 Nm a 1200 giri/min ciascuno. Capacità del serbatoio carburante: 950 litri.
<b>Trasmissione:</b>	2 cambi automatici Allison a 5 velocità con 2 riduttori a due rapporti.
<b>Assi:</b>	N. 8. Gli assi 1, 2, 7 e 8 sono motori e sterzanti. Gli assi 3 e 6 sono sterzanti. Assi motori a planetari. Blocco longitudinale del differenziale tra gli assi 1 e 2 e tra il 7 e 8.
<b>Sospensioni:</b>	Tutti gli assi con sospensioni idropneumatiche bloccabili idraulicamente, sono collegati da bracci oscillanti longitudinali e trasversali. Gli assi 1-3 e 4-8 sono bilanciati idraulicamente con regolazione automatica del livello.
<b>Pneumatici:</b>	16 pneumatici, 14.00 R 24.
<b>Sterzo:</b>	Idroguida ZF a 2 circuiti.
<b>Freni:</b>	freno di servizio: pneumatico a due circuiti, agente su tutte le ruote. Essiccatore d'aria. freno rallentatore: ritardatore idraulico integrato nella trasmissione automatica. freno a mano: a molle precaricate a comando pneumatico agente sugli assi 3, 4, 5, 6 e 7.
<b>Cabina di guida:</b>	In <b>alluminio</b> , a due posti, cristalli di sicurezza, sedile dell'autista a sospensione idraulica, riscaldamento ad acqua calda dipendente dal motore. Strumenti di controllo e di guida.
<b>Impianto elettrico:</b>	Generatore trifase 28 V / 55 A, 2 batterie 12 V / 110 Ah, impianto d'illuminazione e di segnalazione stradale.

## Soprastruttura

<b>Telaio:</b>	Costruzione saldata antitorzionale KRUPP, in acciaio ad alta resistenza.
<b>Motore:</b>	Uno dei due motori montati in tandem sul carro.
<b>Impianto idraulico:</b>	3 circuiti separati, 3 pompe a pistoni assiali a portata variabile ed una pompa ad ingranaggi. Capacità del serbatoio: 3000 litri olio idraulico.
<b>Comandi:</b>	Tutti i movimenti della gru sono progressivamente variabili mediante comando elettrico dei circuiti idraulici e mediante leve di comando con richiamo automatico al punto zero.
<b>Organo di sollevamento:</b>	Motore a pistoni assiali a portate variabile, riduttore a planetari, freno automatico.
<b>Sollevamento braccio:</b>	Due cilindri con valvole di sicurezza, angolo di sollevamento da $-0,5^\circ$ a $+84^\circ$ .
<b>Rotazione:</b>	Motore a pistoni assiali, portata costante, riduttore a planetari, freno d'arresto.
<b>Cabina di manovra:</b>	In <b>alluminio</b> , a grande visibilità, ruotabile lateralmente ed inclinabile a $25^\circ$ , cristalli di sicurezza, sedile regolabile a sospensione idraulica, riscaldamento, strumenti di controllo e di comando della gru.
<b>Dispositivi di sicurezza:</b>	Interruttori di finecorsa del sollevamento e dell'abbassamento, valvole di blocco, valvole limitatrici della pressione.
<b>Braccio telescopico:</b>	Costruzione saldata in acciaio ad alta resistenza, un elemento di base articolato e tre elementi telescopici a comando interamente idraulico sotto carico parziale. Lunghezza totale 49 m.
<b>Impianto elettrici:</b>	Alimentato da quello del carro.

## Equipaggiamenti a richiesta

<b>Prolunghe fisse:</b>	Costruzione in traliccio tubolare 17 - 38 m.
<b>Braccetto variabile:</b>	Costruzione in traliccio tubolare 21 - 77 m.
<b>Sollevamento ausiliario:</b>	Secondo organo di sollevamento per l'azionamento del braccetto variabile.
<b>Limitatore di carico:</b>	Elettronico tipo EKS 83 con disinserimento automatico ed indicatori digitali del peso effettivo e di quello consentito, del raggio e dei diversi stati di funzionamento.

Altri equipaggiamenti accessori a richiesta.

Con riserva di modifiche tecniche.