



Rugged Loader Arm Design with Long Reach and High Bucket Hinge Pin Height

- a. Versatile Vertical Lift Geometry
- b. Hinge Pin Location provides maximum clearance
- c. Auxiliary Hydraulic lines routed through loader arm for safer protection



Wide Cab with Lots of Extras

- a. 36 inches between the side screens is the widest in the skid steer industry; lots of elbow room
- b. Less fatigue on your feet with an ergonomically designed foot pedal location
- c. Easy effort Sliding Front Door for maximum visibility and no interference with loader arms
- d. Standard side lighting to extend the work day
- e. Standard, wide, rear view mirror
- f. Side Windows on enclosed cab installed outside the side screen for easier cleaning
- g. Bolt-on grab handles that can be replaced without compromising ROPs integrity
- h. Tilt the cab with the loader arms up or down



Door Enclosed Fuel Tank and Easy Refill Access

- a. Standard Heavy Duty Rear Door with no louvers or punch outs to protect fuel tank and other peripherals
- b. More room in the engine compartment since fuel tank installed on inside of heavy duty rear door



Top Mounted Radiator and Oil Cooler

- a. Easily removable top screen allows for easy cleaning
- b. More access to daily service checks since radiator and oil cooler are out of the way



Cooling System and Variable Fan

- a. Allows for more efficient engine cooling
- b. Lessens noise levels.



Easy Battery Access

- a. No additional access panels to remove
- b. Easy to reach with jumper cables to jump start your other equipment



Common Rail System and Diesel Particulate Filter (DPF) Muffler

- a. Better fuel efficiency
- b. Auto Regeneration
- c. Inhibit Switch



Easy Access to Routine Checks with most grease zerks recessed

The heavy rear door opens wide, providing access to all components including the battery, air cleaner, filters, and all fluid drains.

Standard Two-Speed Travel

Shift from low gear at 6.9mph (SSV65) / 7.4 mph (SSV75) to high gear at 11.1 mph (SSV65) / 11.8 mph (SSV75) to get the job done faster.



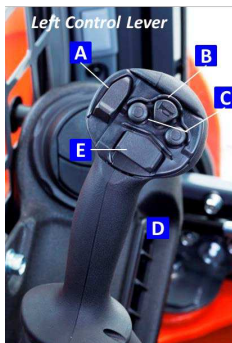
Multi-Function Levers

The optional multi-function levers provide fingertip control of all major vehicle and attachment operations, including the main hydraulic line and three electrical lines, letting you keep both hands on the levers at all times for optimal operating efficiency.

- a. Horn
- b. KSR
- c. Aux Electrical Control Switch
- d. Aux Electrical Control Switch or Turn Signals
- e. Single / Two Speed Switch
- f. Aux Electrical Control Switch
- g. Aux Electrical Control Switch
- h. Aux Port Variable Switch for Proportional Flow
- i. Aux Hold Switch for Continuous Flow

Multi-Function Levers (ISO Pilot Controls)

The pilot control optional multi-function levers are ergonomically designed for easy operation, better comfort, and less fatigue. Just like with the foot controls, all major vehicle attachment operations are on the levers.



- a. KSR
- b. Horn
- c. Aux Electrical Control Switch
- d. Single / Two Speed Switch (Trigger)
- e. Aux Electrical Control Switch
- f. Aux Port Variable Switch for Proportional Flow
- g. Aux Electrical Control Switch
- h. Aux Hold Switch for Continuous Flow
- i. Float (Trigger)



Self-Leveling Function with Kubota Shockless Ride (KSR)

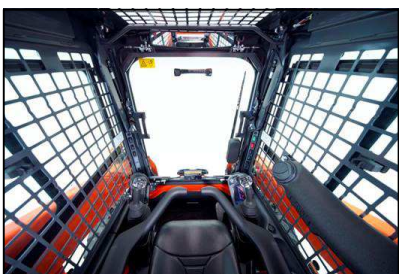
The optional self-leveling function maintains the position of the bucket or fork as the attachment is raised, eliminating the need to manually adjust the angle during this operation.

KSR helps minimize fatigue by "smoothing out" the ride. You'll appreciate KSR when carrying heavy loads over rough terrain on the farm or at a construction job site.



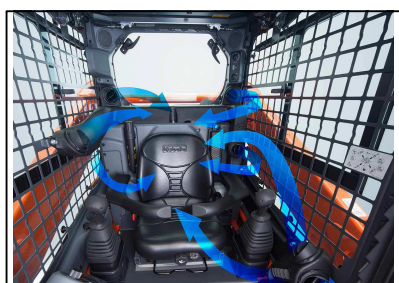
Sealed and Pressurized Cabin

The pressurized cab keeps out dust, flying debris, and insects so that you can work comfortably with fewer distractions. Lower noise levels let you work long hours with



Wide Comfortable Interior with fold down side bars that provide great wrist support and protect the operator

- a. Excellent 360° visibility
- b. Suspension seat
- c. Ready for radio installation
- d. cup holder
- e. 12V power outlet



Optimized Air Conditioning

Optimized airflow through nine vents provides outstanding cooling and heating comfort throughout the year.



Kubota Branded Versatile Attachments

Kubota Branded Versatile Attachments including buckets with cutting edges or teeth, pallet forks, grapples, brooms, bale spears, rotary tillers, augers, power rakes, snow blades, snow blowers, and so many more.