

INTRODUCING THE **NEW** 2014

SWEEPMASTER 300

FEATURES

- Easily adjusted broom down pressure
- Quick view of water tanks
- Advanced hitch/towing package
- Certified rollover protection structure
- Swing up hood for easy engine access
- Available with 6' or 8' brush

Proven and accepted as #1 leader in the rental sweeping industry, the LayMor Sweepmaster 300 is operator friendly and is easily transported from job to job. There is no need to raise the front wheel off the ground for towing purposes, and the tongue can pivot right/left and up/down for a faster and easier hookup. This more accessible maintenance allows for faster and simpler servicing of the unit than other competitive products.



LAYMOR

Contact us at: 903-759-0610 | www.laymor.com

STANDARD EQUIPMENT

- 60-gallon sprinkler system
- Two-post ROPS canopy
- Rear fenders
- Positive neutral start
- Hydraulic power steering
- Hydraulic drum rear towing brakes
- Mechanical parking brake
- Gear motor final drive
- P205 75R14 4-ply radials
- Automotive-style tow hitch includes surge brakes, towing lights, and wiring harness
- All-polyethylene brush, all-steel wire brush, or 1/2 poly and 1/2 wire
- Choice of 2" or 2.31" ball hitch, or 3" pintle hitch
- Greasable front wheel spindle
- Omaha orange paint
- Steel broom core
- Front debris deflector
- 9-gallon fuel tank with mechanical gauge
- Cushioned seat with 2" retractable seat belt and armrests
- Reverse alarm
- Electric hour meter
- Hydraulic sight gauge
- Warning light package, engine oil pressure, water temperature, and alternator
- Engine protection system
- Hub-engaged warning system

TOW PACKAGE

- No jack
- One-man operation
- All wheels on the ground during towing
- Minimal tongue weight
- Surge brakes
- Towing lights
- Turn signals

OPTIONS

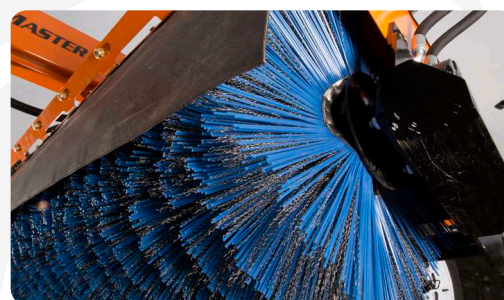
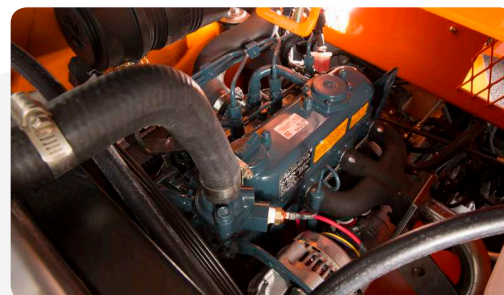
- Variable broom speed
- Strobe light
- Rotating beacon
- Work lights
- Emergency working and turn signal lights

SPECIFICATIONS

- Kubota D1105 Tier 4 Final 24.8 HP @ 3000 rpm
- Broom size - 6.375" I.D. x 24" O.D.
- Broom angle - 40° (each way)
- Steering - 45° (each way)
- Speed - 0 to 7.5 mph
- Machine weight - 6HC 3,000 lbs.
- Machine weight - 8HC 3,100 lbs.
- Transport width, fully angled - 6HC 6'9"
- Transport width, fully angled - 8HC 7'10"
- Transport length, hitch down - 14'

NEW FEATURES

- Kubota D1105 Tier 4 Final 24.8 HP @ 3000 rpm
- Lower center of gravity
- Hydraulic manifold block
- Foot brake



LAYMOR

All specifications are in accordance with SAE standards or recommended practices where applicable. Under our policy of improvement, Mobile Products, Inc. reserves the right to modify specifications at any time without prior notice or obligation. Units shown may include optional equipment. LayMor equipment is manufactured by Mobile Products, Inc.