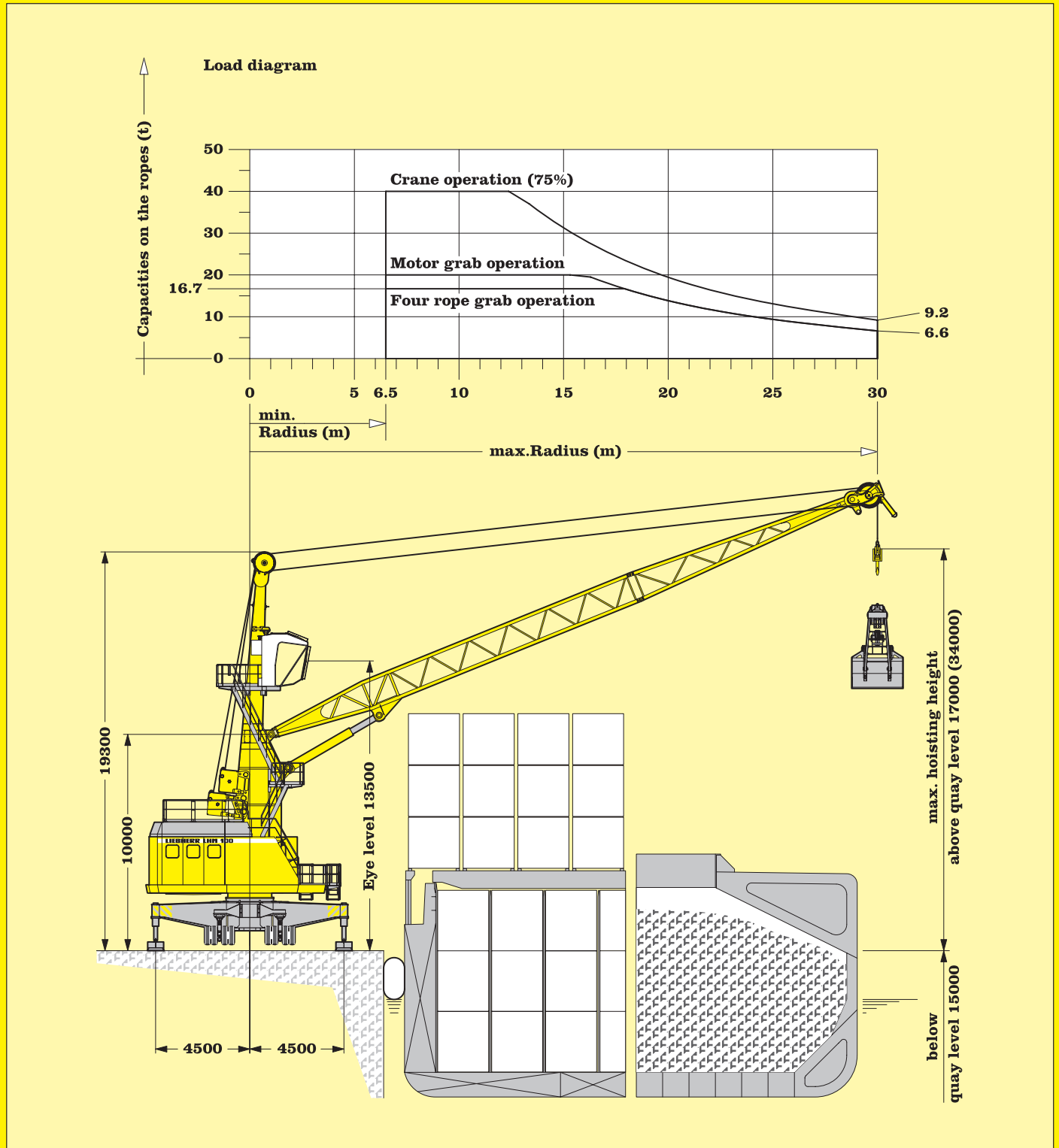


Liebherr Harbour Mobile Crane

LHM 100

Litronic®

The synergy of wide experience, research and development for your success and benefit



LIEBHERR

The name for cranes.

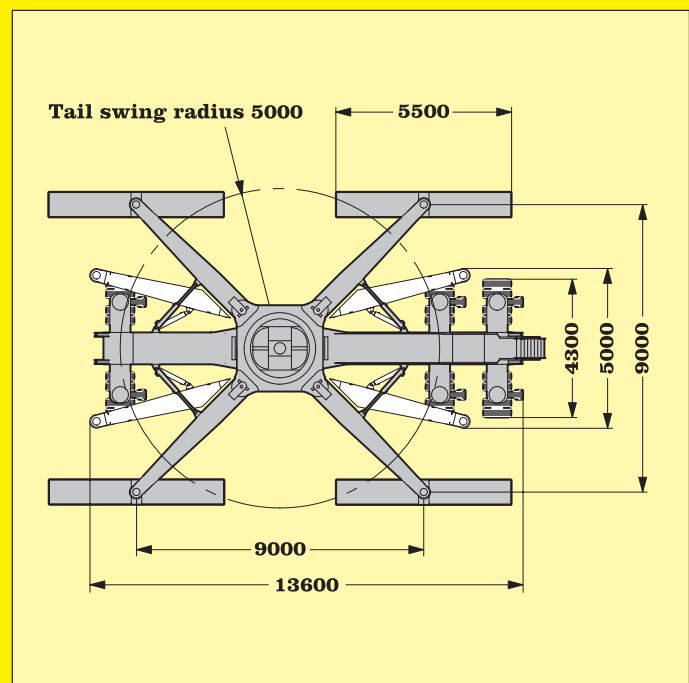
Liebherr Harbour Mobile Cranes, Type LHM 100 Litronic®

- high performance
- high reliability and quality
- low operational cost
- unsurpassed mobility and flexibility
- worldwide service network

Load diagram

Radius (m)	crane operation 75% (t)	motor grab operation (t)	four rope grab operation (t)
6.5	40.0	20.0	16.7
12	40.0	20.0	16.7
13	37.0	20.0	16.7
14	33.4	20.0	16.7
15	30.3	20.0	16.7
16	27.5	19.5	16.7
17	25.0	17.8	16.7
18	22.7	16.2	16.2
19	20.8	14.8	14.8
20	19.1	13.6	13.6
21	17.7	12.6	12.6
22	16.3	11.6	11.6
23	15.1	10.7	10.7
24	14.1	10.0	10.0
25	13.1	9.3	9.3
26	12.2	8.6	8.6
27	11.4	8.1	8.1
28	10.6	7.5	7.5
29	9.9	7.0	7.0
30	9.2	6.6	6.6

Propping base LHM 100



Technical data

Capacities	2-rope operation	25 t or 40 t
	4-rope operation	36 t or 40 t
Engine	Liebherr Dieselmotor, type D9408 TI-E	400 kW at 1900 rpm
Working speeds	hoisting / lowering	max. 70 m/min
	slewing	max. 1.5 rpm
	average luffing speed	40 m/min
	travelling without load	0 - 5.4 km/h
Weight	total crane	approx. 116 t
Undercarriage	number of axle sets standard	6
	maximum number of axle sets	10
	number of steerable axle sets	all
	number of driven axle sets	2
	can be increased on request	
Hoisting height	above quay at minimum radius	34 m
	above quay at maximum radius	17 m
	below quay	15 m
Propping base	support base	9m x 9m

LIEBHERR-WERK NENZING GMBH,

P.O. Box 10, A-6710 Nenzing / Austria / Europe

Telephone: (+43) 5525-606-363

Telefax: (+43) 5525-606-53

Email: harbour.mobile.crane@lwn.liebherr.com

Internet: www.liebherr.com

Presented by: