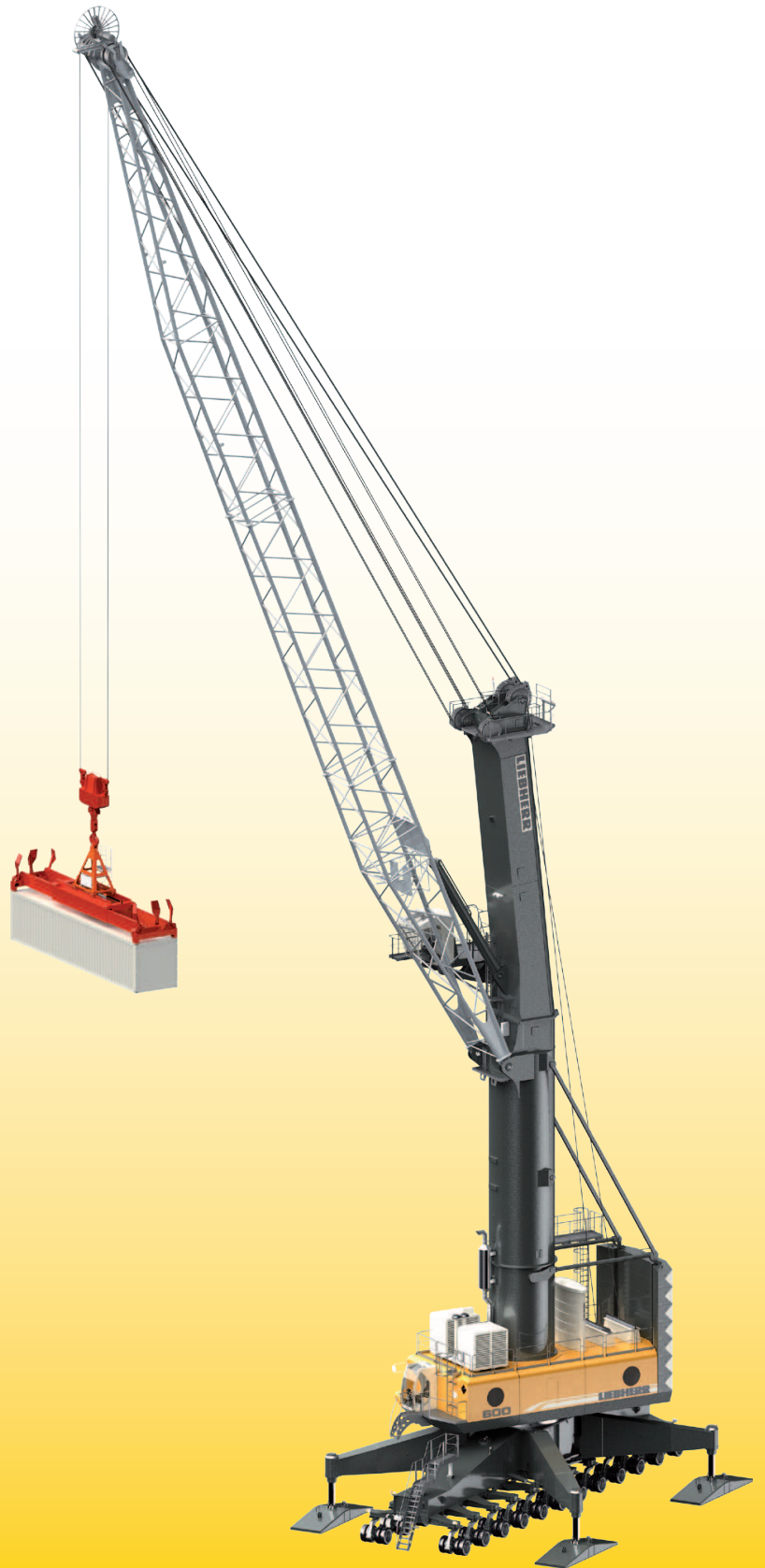


Mobile Harbour Crane

High Rise Version

LHM 600

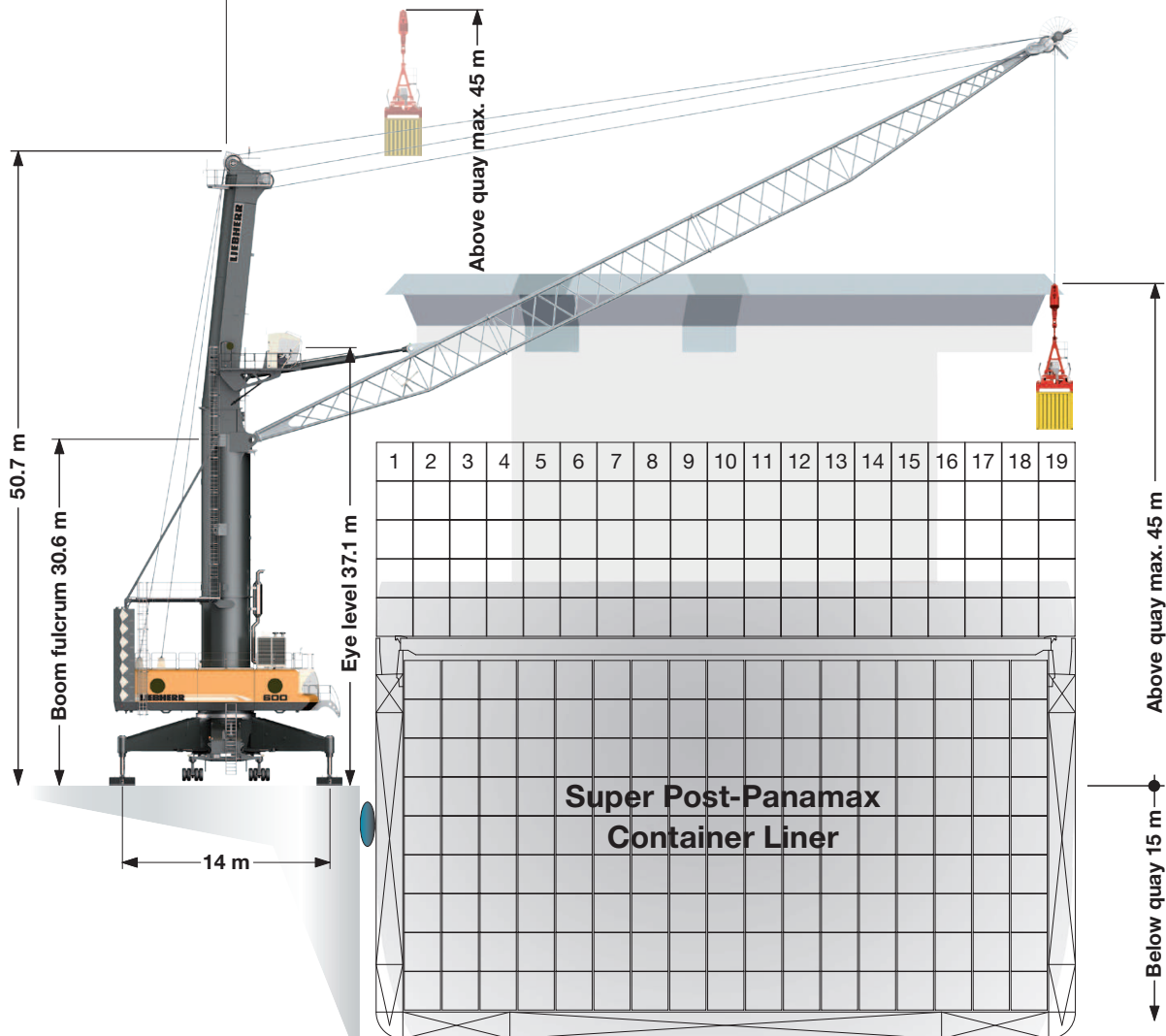
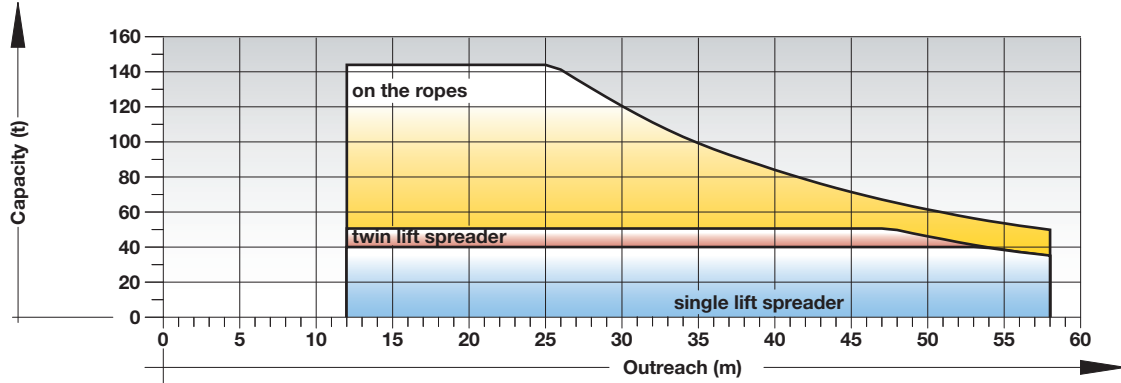


LIEBHERR

Courtesy of Crane.Market

Main dimensions

Load diagram



Container operation

Maximum crane capacity 104 t			
Outreach	Spreader operation under		Hook operation on the ropes
	Single lift	Twin lift	Standard
(m)	(t)	(t)	(t)
12	41.0	50.0	104.0
14	41.0	50.0	104.0
16	41.0	50.0	104.0
18	41.0	50.0	104.0
20	41.0	50.0	104.0
22	41.0	50.0	104.0
24	41.0	50.0	104.0
26	41.0	50.0	104.0
28	41.0	50.0	104.0
30	41.0	50.0	104.0
33	41.0	50.0	104.0
34	41.0	50.0	102.0
36	41.0	50.0	94.8
38	41.0	50.0	88.6
40	41.0	50.0	82.7
42	41.0	50.0	77.3
44	41.0	50.0	72.2
47	41.0	50.0	65.4
48	41.0	49.8	63.5
50	41.0	45.9	59.6
52	41.0	42.4	56.1
54	41.0	39.3	53.0
56	38.2	36.5	50.2
58	35.8	34.1	47.8

Weight rotator 3.0 t
 Weight fully automatic (telescopic) spreader 9 t
 Weight twin lift spreader 10.7 t

Maximum crane capacity 144 t			
Outreach	Spreader operation under		Hook operation on the ropes
	Single lift	Twin lift	Standard
(m)	(t)	(t)	(t)
12	41.0	50.0	144.0
14	41.0	50.0	144.0
16	41.0	50.0	144.0
18	41.0	50.0	144.0
20	41.0	50.0	144.0
22	41.0	50.0	144.0
24	41.0	50.0	144.0
25	41.0	50.0	144.0
28	41.0	50.0	130.4
30	41.0	50.0	120.0
33	41.0	50.0	106.1
34	41.0	50.0	102.0
36	41.0	50.0	94.8
38	41.0	50.0	88.6
40	41.0	50.0	82.7
42	41.0	50.0	77.3
44	41.0	50.0	72.2
47	41.0	50.0	65.4
48	41.0	49.2	63.5
50	41.0	45.3	59.6
52	41.0	41.8	56.1
53	41.0	40.2	54.5
56	37.6	35.9	50.2
58	35.2	33.5	47.8

Weight rotator 3.6 t
 Weight fully automatic (telescopic) spreader 9 t
 Weight twin lift spreader 10.7 t
 *) also available in 4-rope configuration

Standard configuration **Pactronic®** Turnover up to 32 cycles per hour Turnover up to 38 cycles per hour

Precision to perfection: With incredibly short acceleration times for all crane motions, Liebherr is the top performer in container handling.

- The Pactronic® Hybrid Drive System is characterized by an energy storage device, which is added to the drive system as a secondary energy source. This results in substantially higher hoisting and lowering speeds. Not only is the crane's efficiency increased, but also the turnover (+30%). In addition, the crane's energy consumption is significantly reduced (-30%).
- Liebherr Cycoptronic® is an accurate, sway-free load motion control system that uses in-house designed software. Cycoptronic® allows for direct load positioning and aids the crane driver in mastering his task. With Cycoptronic® turnover, safety and the confidence of the operator will be improved.
- When loading/unloading containers, the crane driver needs to slew the crane causing the container to deviate from its parallel position to the vessel. With the Advanced Container Control System the container remains parallel to the vessel which eases the positioning for the crane driver and boosts handling figures.
- The Liebherr hydrostatic drive is the most reliable and highest performing drive system for mobile harbour cranes. Independent closed loop hydraulic systems utilize the minimum number of components to guarantee highly responsive, smooth and precise operation while maximizing operational safety.

Technical data

Capacity and Classification

	Capacity	Classification
Standard operation	< 73 t	A8
Container	< 73 t	A8

Main dimensions

Min. to max. outreach	12–58 m
Height of boom fulcrum	30.6 m
Tower cabin height (eye level)	37.1 m
Overall height (top of tower)	50.7 m
Overall length of undercarriage	26.7 m
Overall width of undercarriage	8.0 m
Number of axle sets (standard)	26
Number of axle sets (optional)	28

Working speeds

Hoisting / lowering	0 – 120 m/min
Slewing	0 – 1.6 rpm
Luffing	0 – 100 m/min
Travelling	0 – 5.0 km/h

Propping arrangements

Standard supporting base	14 m x 14 m
Standard pad dimension	4 x 5.5 m x 1.8 m
Standard supporting area of pads	9.9 m ²
Optional size of supporting pads and bases on request	

Quay load arrangements

Uniformly distributed load	2.0 t/m ²
Max. load per tyre	5.6 t
Due to a unique undercarriage design its parameters (pad sizes, supporting base and number of axle sets) can easily be adapted to comply with the most stringent quay load restrictions.	

Weight

Total weight of crane	
Container version with 58 m boom and tower extension 12 m	approx. 580 t

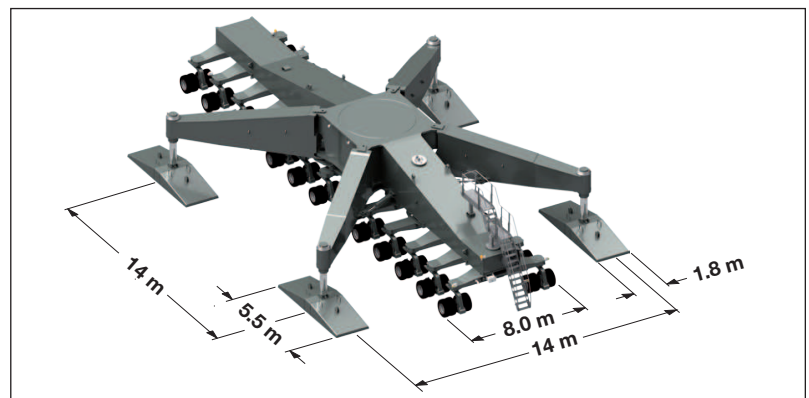
Hoisting heights

Above quay at minimum radius	45 m
Above quay at maximum radius	45 m
Below quay level	15 m

Undercarriage

Modular propping system

- Minimised stress and strain of undercarriage due to cruciform support base which directs the load path from boom tip to quay
- Modular system allows further reduction of quay loads by installing additional axle sets
- Easy adaptation to various sizes of support pads and bases



High Rise Version