

Mobile Crane/Grue mobile

LTM 1090-4.1



| | |
|---|-------------------|
|  | 110 t (us) |
|  | 164 ft |
|  | 205 ft |
|  | 246 ft |
|  | 259 ft |

LIEBHERR

Courtesy of Crane.Market

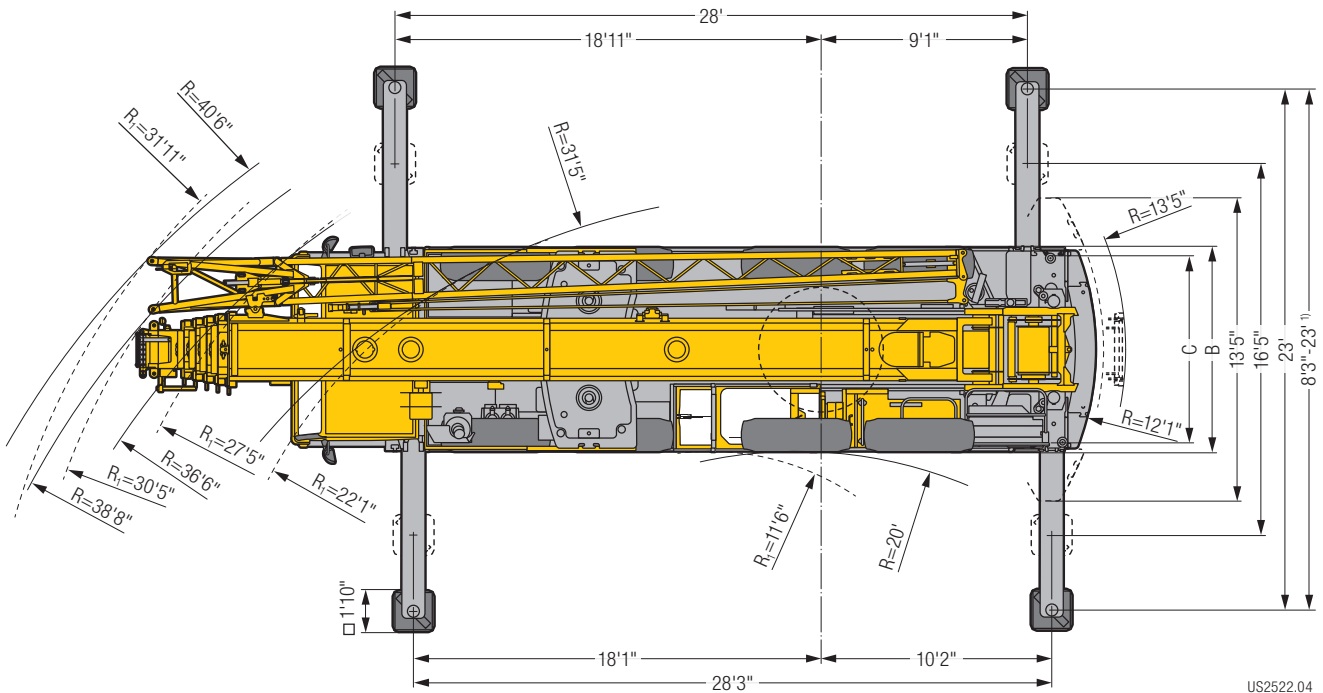
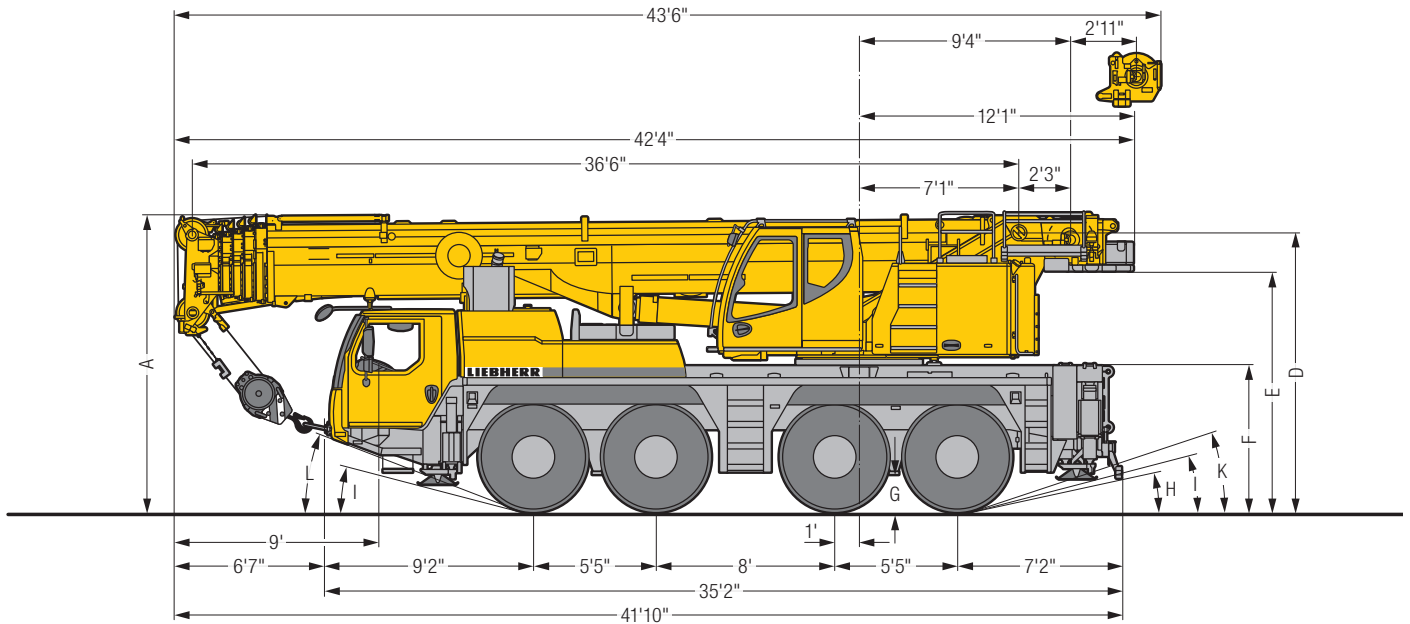
Table of content

Tables des matières

Technical Data/Caractéristiques technique

| | |
|--|---------|
| Dimensions/Encombrement | 3 |
| Mobile Crane/Grue mobile | 4 – 5 |
| Weights/Poids Working speeds/Vitesses | 6 |
| Counterweight/Contrepoids | 7 |
| Boom/jib combinations/Configurations de flèche | 8 |
| Hydraulic swing away jib/Fléchette pliante hydraulique | 9 |
| T | 10 – 15 |
| TK | 16 – 18 |
| TNZK | 19 – 21 |
| TVK | 22 – 24 |
| TVNZK | 25 – 27 |
| TK | 28 – 29 |
| Equipment/Equipement | 30 – 31 |
| Description of symbols/Explication des symboles | 32 |
| Remarks/Remarques | 33 |


Dimensions Encombrement



US2522.04

R_i = All wheel steering · Direction toutes roues ¹⁾ only with VarioBase® · seulement avec VarioBase®

Dimensions/Encombrement

| | A | A | B | C | D | E | F | G | H | I | K | L |
|---|-------|--------|------|------|-------|-------|------|------|-----|-----|-----|-----|
|  | | 0'4" * | | | | | | | | | | |
| 445/95 R 25 (16.00 R 25) | 13'1" | 12'10" | 9' | 7'7" | 12'2" | 10'6" | 6'4" | 1'5" | 11° | 13° | 17° | 18° |
| 525/80 R 25 (20.5 R 25) | 13'1" | 12'10" | 9'6" | 7'9" | 12'2" | 10'6" | 6'4" | 1'5" | 11° | 13° | 17° | 18° |

* lowered · abaissé

Mobile Crane/Grue mobile LTM 1090-4.1



164 ft



34 ft – 62 ft



23 ft



8 ft



46300 lbs

€COmode

VarioBase®



Option







Weights Poids


Hook block/Moufles à crochet

| Load kips Forces de levage kips | No. of sheaves Poulies | No. of lines Brins | Weight lbs Poids lbs |
|------------------------------------|---------------------------|-----------------------|-------------------------|
| 176.3 | 7 | 14 | 1100 |
| 128.7 | 5 | 10 | 1100 |
| 84.4 | 3 | 7 | 992 |
| 35.3 | 1 | 3 | 606 |
| 12.5 | – | 1 | 309 |






Working speeds Vitesses

Crane carrier/Châssis porteur

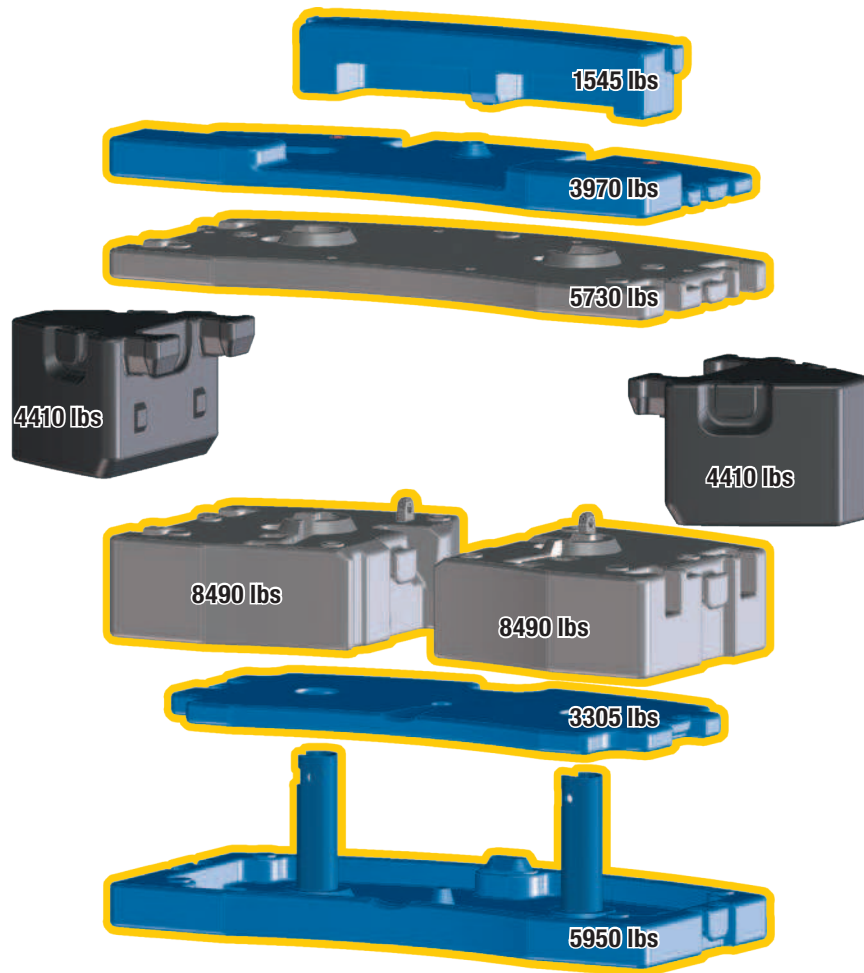
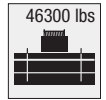
|  | (mph) min. | (mph) max. |  % |
|--|------------|------------|--|
| 445/95 R 25 (16.00 R 25) 525/80 R 25 (20.5 R 25) | 0.3 | 53 | 61.1 % |

| | |
|---|--|
|  |  |
|  | 12 / R2 |
|  | 4 / R2 |

Crane superstructure/Partie tournante

| Drive Mécanismes | infinitely variable en continu | Rope diameter / length Diamètre / Longueur du câble | Max. single line pull Effort au brin maxi. |
|---|--|--|---|
|  | 0 – 410 ft/min single line ft/min au brin simple | 0.67" / 853 ft | 12800 lbs |
|  | 0 – 410 ft/min single line ft/min au brin simple | 0.67" / 853 ft | 12800 lbs |
|  | 0 – 1.7 rpm | | |
|  | approx. 50 seconds to reach 83° boom angle env. 50 s jusqu'à 83° | | |
|  | approx. 330 seconds for boom extension from 36 ft – 164 ft env. 330 s pour passer de 36 ft – 164 ft | | |

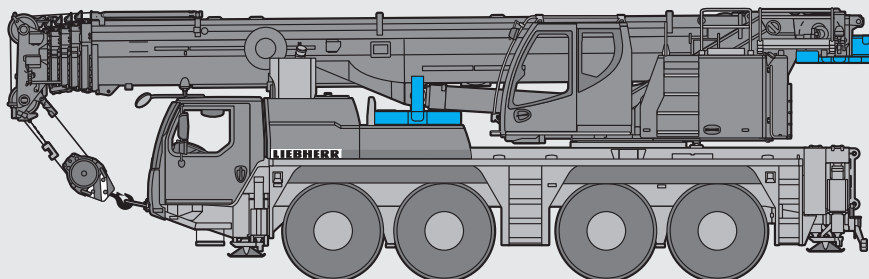
Counterweight Contrepoids



Technically transportable - Transport techniquement simplifié

Axle/Essieu

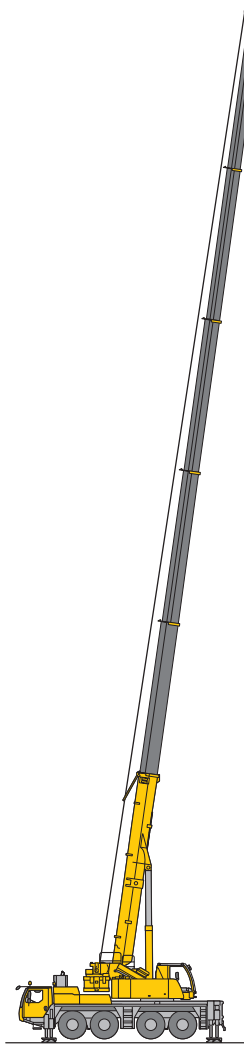
| Axle Essieu | 1 | 2 | 3 | 4 | Total weight lbs Poids total lbs |
|--|-------|-------|-------|-------|-------------------------------------|
| lbs | 26400 | 26400 | 26400 | 26400 | 105600 ¹⁾ |
| <small>¹⁾ with 14800 lbs counterweight - avec contrepoids 14800 lbs</small> | | | | | |



S3030

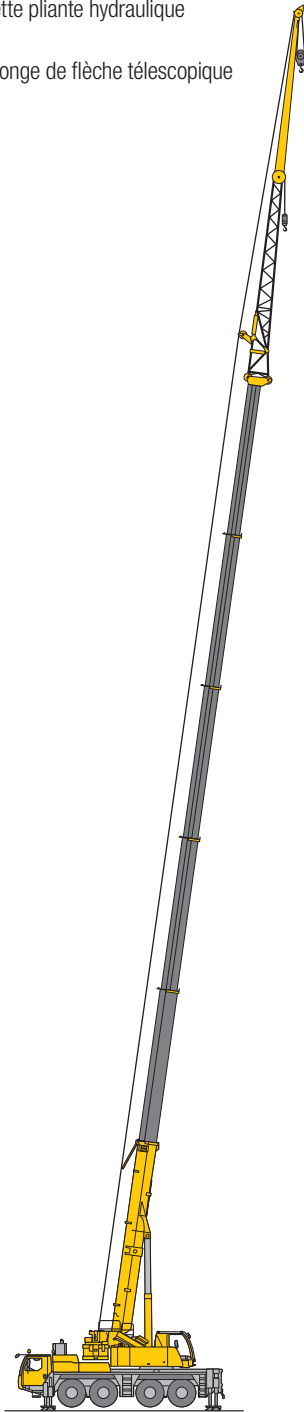
Boom/jib combinations Configurations de flèche

- T** Telescopic boom/Flèche télescopique
- K** Erection jib/Flechette de montage
- NZK** Hydraulic swing away jib/Fléchette pliante hydraulique
- V** Telescopic boom extension/Rallonge de flèche télescopique



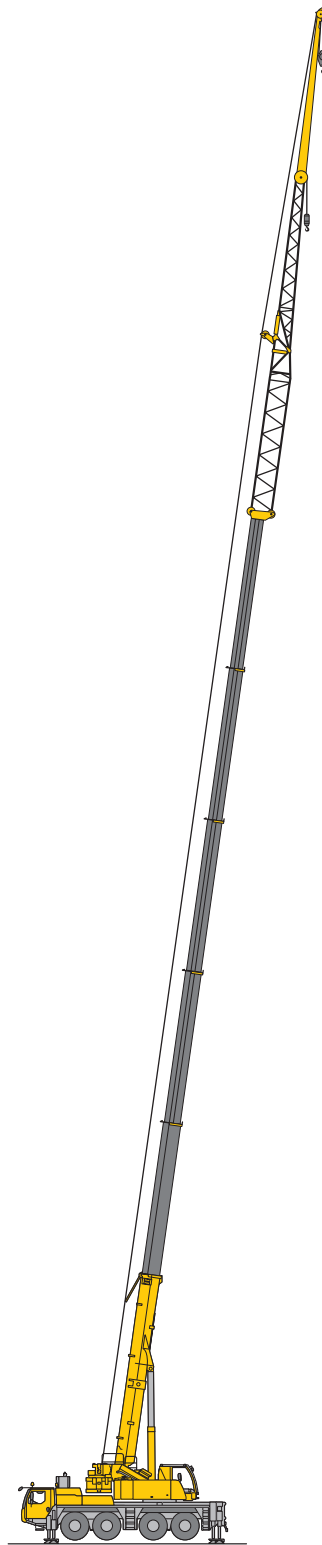
T

10 – 15



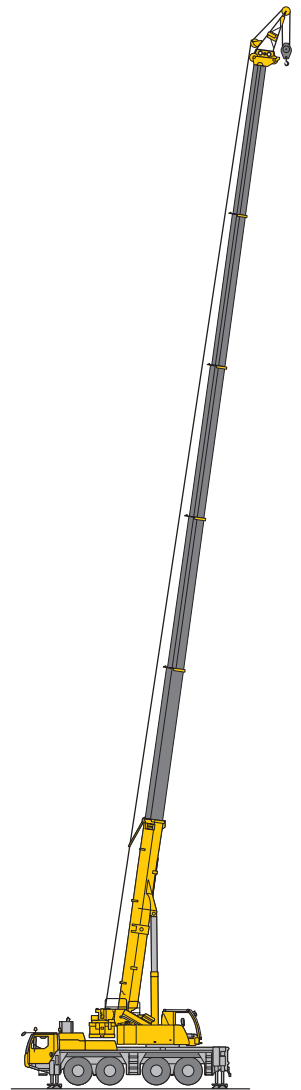
TK/TNZK

16 – 21



TVK/TVNZK

22 – 27



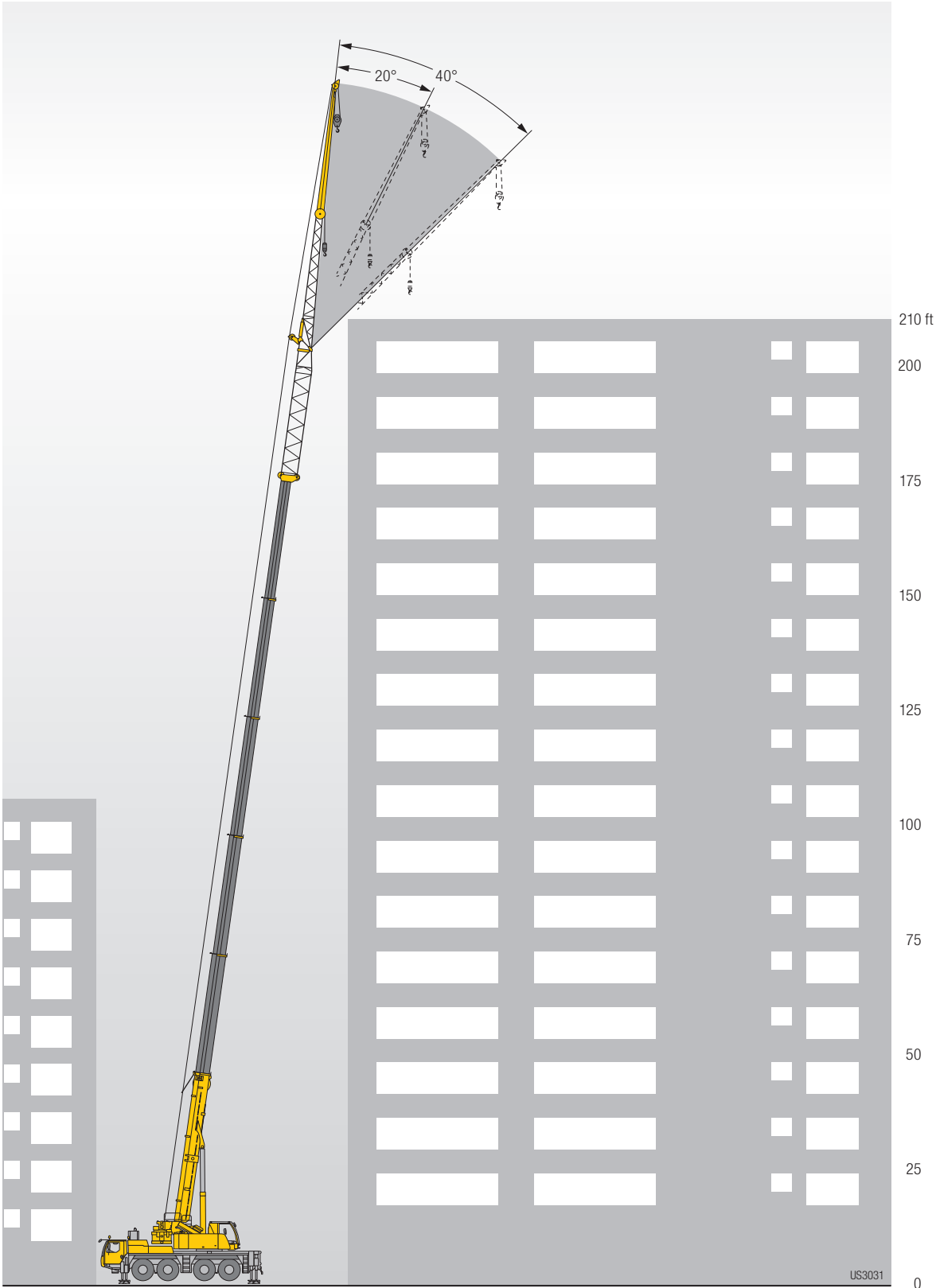
TK

28 – 29

S2965.01



Hydraulic swing away jib Flèche pliante hydraulique



Lifting capacities Forces de levage

T



| | * 36 ft | | 48 ft | 60 ft | 72 ft | 83 ft | 95 ft | 107 ft | 118 ft | 130 ft | 142 ft | 154 ft | 164 ft | | |
|-----|---------|-------|-------|-------|-------|-------|-------|--------|--------|--------|--------|--------|--------|------|-----|
| 10 | 218.3 | 139.5 | 139.5 | 139.5 | 118 | | | | | | | | | 10 | |
| 11 | 202.9 | 139.5 | 139.5 | 137.9 | 118 | 95.8 | | | | | | | | 11 | |
| 12 | 146.4 | 139.5 | 138 | 132.8 | 118 | 95.8 | | | | | | | | 12 | |
| 13 | 140.3 | 139.2 | 132.5 | 126.7 | 118 | 95.8 | 82.7 | | | | | | | 13 | |
| 14 | 134.7 | 132.4 | 127.5 | 121.2 | 116.7 | 95.8 | 82.2 | | | | | | | 14 | |
| 15 | 129.6 | 126.1 | 122.7 | 116.7 | 113.4 | 95.8 | 81.6 | | | | | | | 15 | |
| 16 | 124.9 | 120.5 | 118.1 | 113 | 108.8 | 95.8 | 81 | 61.2 | | | | | | 16 | |
| 17 | 120.5 | 115.2 | 113.7 | 108.8 | 104.5 | 95.7 | 80.3 | 61.2 | | | | | | 17 | |
| 18 | 116.3 | 110.3 | 109.9 | 105 | 100.7 | 95.2 | 79.5 | 61.2 | 37.3 | | | | | 18 | |
| 19 | 112.4 | 105.7 | 105.9 | 102.4 | 97.1 | 93.8 | 78.8 | 61.2 | 53.4 | | | | | 19 | |
| 20 | 108.8 | 101.3 | 101.8 | 99 | 94.7 | 91.7 | 77.8 | 61.2 | 53.3 | | | | | 20 | |
| 22 | 101.2 | 93.2 | 94.2 | 93 | 89.6 | 86.2 | 75.7 | 61.2 | 52.9 | 42.6 | | | | 22 | |
| 24 | 91.8 | 85.1 | 86.4 | 87 | 84.3 | 81 | 73.7 | 60.7 | 52.2 | 42.5 | 25 | | | 24 | |
| 26 | 83.3 | 77.8 | 79.2 | 79.8 | 78.5 | 74.9 | 71.3 | 58.6 | 51.3 | 42.2 | 34 | | | 26 | |
| 28 | 76 | 71.5 | 72.9 | 73.5 | 71.7 | 70.3 | 66.4 | 56.1 | 49.8 | 41.6 | 33.8 | 25 | | 28 | |
| 30 | | | 67.4 | 68.1 | 65.5 | 64.3 | 61.1 | 53.5 | 48 | 40.7 | 33.5 | 25 | 21.8 | 30 | |
| 32 | | | 62.4 | 62.9 | 60.1 | 59.4 | 56.3 | 51 | 46.2 | 39.6 | 32.9 | 25 | 21.8 | 32 | |
| 34 | | | 57.7 | 58 | 57 | 55 | 52.2 | 48.6 | 44.4 | 38.4 | 32.1 | 25 | 21.8 | 34 | |
| 36 | | | 53.7 | 53.8 | 53.3 | 51.1 | 48.6 | 46.1 | 42.5 | 37.1 | 31.3 | 25 | 21.8 | 36 | |
| 38 | | | 50.1 | 50.1 | 49.8 | 47.7 | 45.3 | 43.1 | 40.7 | 36 | 30.5 | 24.9 | 21.6 | 38 | |
| 40 | | | 47.1 | 46.9 | 46.6 | 44.6 | 42.4 | 40.7 | 38.9 | 34.8 | 29.6 | 24.5 | 21.3 | 40 | |
| 45 | | | | 40.4 | 40.1 | 38.3 | 36.4 | 35.3 | 33.5 | 32 | 27.6 | 23.3 | 20.5 | 45 | |
| 50 | | | | | 34.5 | 34.8 | 33.4 | 31.7 | 30.7 | 29.5 | 28.8 | 25.7 | 22 | 19.5 | 50 |
| 55 | | | | | | 30.1 | 29.4 | 28 | 28.1 | 26.6 | 25.3 | 24.1 | 20.8 | 18.4 | 55 |
| 60 | | | | | | 26.4 | 26.1 | 24.9 | 25.1 | 23.6 | 22.3 | 22.2 | 19.6 | 17.4 | 60 |
| 65 | | | | | | | 23 | 23.3 | 22.4 | 21.1 | 20.6 | 20 | 18.5 | 16.4 | 65 |
| 70 | | | | | | | 20.5 | 21.4 | 20.3 | 18.9 | 19.1 | 18 | 17.5 | 15.5 | 70 |
| 75 | | | | | | | 18.9 | 19.1 | 18.4 | 17.7 | 17.2 | 16.2 | 16.4 | 14.7 | 75 |
| 80 | | | | | | | | 17.3 | 16.7 | 16.7 | 15.6 | 15.3 | 15 | 13.9 | 80 |
| 85 | | | | | | | | 15.7 | 15.4 | 15.2 | 14.7 | 14.4 | 13.6 | 13.2 | 85 |
| 90 | | | | | | | | | 14 | 13.8 | 13.8 | 13.3 | 12.4 | 12.2 | 90 |
| 95 | | | | | | | | | 13.3 | 12.5 | 12.5 | 12.2 | 11.3 | 11.2 | 95 |
| 100 | | | | | | | | | | 11.6 | 11.3 | 11.1 | 10.3 | 10.2 | 100 |
| 105 | | | | | | | | | | 11 | 10.4 | 10.1 | 9.4 | 9.3 | 105 |
| 110 | | | | | | | | | | 10.1 | 9.5 | 9.1 | 8.5 | 8.5 | 110 |
| 115 | | | | | | | | | | | 8.8 | 8.4 | 7.8 | 7.7 | 115 |
| 120 | | | | | | | | | | | 8.1 | 7.7 | 7.1 | 7 | 120 |
| 125 | | | | | | | | | | | | 7.1 | 6.4 | 6.4 | 125 |
| 130 | | | | | | | | | | | | 6.5 | 5.8 | 5.8 | 130 |
| 135 | | | | | | | | | | | | 5.9 | 5.2 | 5.2 | 135 |
| 140 | | | | | | | | | | | | | 4.7 | 4.7 | 140 |
| 145 | | | | | | | | | | | | | 4.2 | 4.2 | 145 |
| 150 | | | | | | | | | | | | | | 3.7 | 150 |
| 155 | | | | | | | | | | | | | | 3.3 | 155 |

* over rear - en arrière

t_207_50001_00_000 / 50301_00_000

Lifting capacities Forces de levage

T



| | 36 ft | 48 ft | 60 ft | 72 ft | 83 ft | 95 ft | 107 ft | 118 ft | 130 ft | 142 ft | 154 ft | 164 ft | |
|-----|-------|-------|-------|-------|-------|-------|--------|--------|--------|--------|--------|--------|-----|
| 10 | 139.5 | 139.5 | 139.5 | 118 | | | | | | | | | 10 |
| 11 | 139.5 | 139.5 | 137.9 | 118 | 95.8 | | | | | | | | 11 |
| 12 | 139.5 | 138 | 132.8 | 118 | 95.8 | | | | | | | | 12 |
| 13 | 138.6 | 132.5 | 126.7 | 118 | 95.8 | 82.7 | | | | | | | 13 |
| 14 | 131.8 | 127.5 | 121.2 | 116.7 | 95.8 | 82.2 | | | | | | | 14 |
| 15 | 125.6 | 122.7 | 116.7 | 113.4 | 95.8 | 81.6 | | | | | | | 15 |
| 16 | 119.9 | 118.1 | 113 | 108.8 | 95.8 | 81 | 61.2 | | | | | | 16 |
| 17 | 114.6 | 113.7 | 108.8 | 104.5 | 95.7 | 80.3 | 61.2 | | | | | | 17 |
| 18 | 109.4 | 109.6 | 105 | 100.7 | 95.2 | 79.5 | 61.2 | 37.3 | | | | | 18 |
| 19 | 104.7 | 105.3 | 102.4 | 97.1 | 93.8 | 78.8 | 61.2 | 53.4 | | | | | 19 |
| 20 | 100.1 | 100.7 | 99 | 94.7 | 91.7 | 77.8 | 61.2 | 53.3 | | | | | 20 |
| 22 | 90.6 | 92 | 92.4 | 88 | 83.5 | 75.7 | 61.2 | 52.9 | 42.6 | | | | 22 |
| 24 | 82.3 | 83.6 | 83.8 | 79.6 | 77 | 72.6 | 60.7 | 52.2 | 42.5 | 25 | | | 24 |
| 26 | 75.2 | 76.6 | 75.1 | 71.5 | 70 | 65.8 | 58.6 | 51.3 | 42.2 | 34 | | | 26 |
| 28 | 68.7 | 70.3 | 68 | 65.8 | 63.6 | 60 | 55.9 | 49.8 | 41.6 | 33.8 | 25 | | 28 |
| 30 | | 64.3 | 61.9 | 61 | 58.1 | 55.1 | 52.1 | 48 | 40.7 | 33.5 | 25 | 21.8 | 30 |
| 32 | | 58.8 | 56.7 | 56.1 | 53.6 | 50.7 | 48 | 45.8 | 39.6 | 32.9 | 25 | 21.8 | 32 |
| 34 | | 54.2 | 52.2 | 51.8 | 49.6 | 46.9 | 45.1 | 42.9 | 38.4 | 32.1 | 25 | 21.8 | 34 |
| 36 | | 49.7 | 49.3 | 48.1 | 46 | 43.6 | 42.1 | 39.9 | 37.1 | 31.3 | 25 | 21.8 | 36 |
| 38 | | 46 | 46.3 | 44.8 | 42.9 | 40.6 | 39.4 | 37.3 | 36 | 30.5 | 24.9 | 21.6 | 38 |
| 40 | | 42.4 | 43.4 | 41.9 | 40.1 | 38.2 | 36.8 | 35 | 34.2 | 29.6 | 24.5 | 21.3 | 40 |
| 45 | | | 36.5 | 36 | 34.3 | 32.8 | 32.5 | 31 | 29.3 | 27.6 | 23.3 | 20.5 | 45 |
| 50 | | | 31 | 31.2 | 29.8 | 29.3 | 28.5 | 26.9 | 25.7 | 25.4 | 22 | 19.5 | 50 |
| 55 | | | | 26.9 | 26.2 | 26.4 | 25 | 23.5 | 23.4 | 22.3 | 20.8 | 18.4 | 55 |
| 60 | | | | 23.5 | 23.2 | 23.5 | 22.2 | 21.4 | 20.9 | 19.7 | 19.5 | 17.4 | 60 |
| 65 | | | | | 21 | 21.1 | 20.3 | 19.8 | 18.6 | 18.4 | 17.8 | 16.4 | 65 |
| 70 | | | | | 19.3 | 18.9 | 18.3 | 17.8 | 17.3 | 16.9 | 15.9 | 15.4 | 70 |
| 75 | | | | | 17.4 | 16.8 | 16.5 | 16 | 15.7 | 15.2 | 14.2 | 14 | 75 |
| 80 | | | | | | 15 | 15.3 | 14.5 | 14.4 | 13.8 | 12.8 | 12.6 | 80 |
| 85 | | | | | | 13.5 | 13.9 | 13.7 | 13.1 | 12.5 | 11.5 | 11.3 | 85 |
| 90 | | | | | | | 12.6 | 12.4 | 11.8 | 11.3 | 10.4 | 10.2 | 90 |
| 95 | | | | | | | 11.3 | 11.2 | 10.6 | 10.2 | 9.4 | 9.2 | 95 |
| 100 | | | | | | | | 10.2 | 9.6 | 9.2 | 8.5 | 8.3 | 100 |
| 105 | | | | | | | | 9.2 | 8.7 | 8.4 | 7.7 | 7.5 | 105 |
| 110 | | | | | | | | 8.5 | 7.9 | 7.6 | 6.9 | 6.8 | 110 |
| 115 | | | | | | | | | 7.3 | 6.9 | 6.3 | 6.1 | 115 |
| 120 | | | | | | | | | 6.6 | 6.3 | 5.6 | 5.5 | 120 |
| 125 | | | | | | | | | | 5.6 | 5 | 5 | 125 |
| 130 | | | | | | | | | | 5.1 | 4.4 | 4.4 | 130 |
| 135 | | | | | | | | | | 4.6 | 3.8 | 3.9 | 135 |
| 140 | | | | | | | | | | | 3.4 | 3.4 | 140 |
| 145 | | | | | | | | | | | 2.9 | 2.9 | 145 |
| 150 | | | | | | | | | | | | 2.5 | 150 |
| 155 | | | | | | | | | | | | 2.1 | 155 |

t_207_50306_00_000

Lifting capacities Forces de levage

T



| | 36 ft | 48 ft | 60 ft | 72 ft | 83 ft | 95 ft | 107 ft | 118 ft | 130 ft | 142 ft | 154 ft | 164 ft | |
|-----|-------|-------|-------|-------|-------|-------|--------|--------|--------|--------|--------|--------|-----|
| 10 | 139.5 | 139.5 | 139.5 | 118 | | | | | | | | | 10 |
| 11 | 139.5 | 139.5 | 137.9 | 118 | 95.8 | | | | | | | | 11 |
| 12 | 139.2 | 138 | 132.8 | 118 | 95.8 | | | | | | | | 12 |
| 13 | 136.9 | 132.5 | 126.7 | 118 | 95.8 | 82.7 | | | | | | | 13 |
| 14 | 129.8 | 127.5 | 121.2 | 115.6 | 95.8 | 82.2 | | | | | | | 14 |
| 15 | 123.2 | 122.7 | 116.2 | 109.2 | 95.4 | 81.6 | | | | | | | 15 |
| 16 | 116.3 | 116.2 | 109.1 | 99.2 | 92.3 | 81 | 61.2 | | | | | | 16 |
| 17 | 109.2 | 107.7 | 101.9 | 93.7 | 86.5 | 79.9 | 61.2 | | | | | | 17 |
| 18 | 102.7 | 99.3 | 93.5 | 86.6 | 82.7 | 76.8 | 61.2 | 37.3 | | | | | 18 |
| 19 | 96.8 | 91.8 | 86.3 | 81.7 | 77.1 | 71.6 | 61.2 | 53.4 | | | | | 19 |
| 20 | 89.7 | 84.6 | 79.9 | 77 | 72.1 | 67.1 | 61.2 | 53.3 | | | | | 20 |
| 22 | 77.1 | 73.3 | 71 | 67.8 | 63.5 | 59.3 | 56.3 | 51.5 | 42.6 | | | | 22 |
| 24 | 67.3 | 64.2 | 62.9 | 60.2 | 56.7 | 53.3 | 50.5 | 47.5 | 42.5 | 25 | | | 24 |
| 26 | 59.6 | 58 | 56.3 | 54 | 51.1 | 48.9 | 46.2 | 44.2 | 41.3 | 34 | | | 26 |
| 28 | 52.7 | 52.1 | 50.8 | 48.8 | 46.3 | 44.7 | 42.9 | 40.2 | 37.6 | 33.8 | 25 | | 28 |
| 30 | | 47 | 46.1 | 44.4 | 42.1 | 40.8 | 39.1 | 36.6 | 35.8 | 33.1 | 25 | 21.8 | 30 |
| 32 | | 42.8 | 42.1 | 40.5 | 38.7 | 38.1 | 35.8 | 34.3 | 32.9 | 30.9 | 25 | 21.8 | 32 |
| 34 | | 39.1 | 38.4 | 37 | 35.5 | 35 | 33.3 | 31.9 | 30.3 | 28.5 | 25 | 21.8 | 34 |
| 36 | | 35.9 | 35.3 | 34 | 33.6 | 32.4 | 31 | 29.9 | 28.5 | 26.3 | 25 | 21.8 | 36 |
| 38 | | 32.6 | 32.6 | 31.4 | 31.5 | 29.9 | 28.8 | 27.8 | 26.9 | 24.9 | 24.2 | 21.6 | 38 |
| 40 | | 29.7 | 30.2 | 29.1 | 29.3 | 27.8 | 27.2 | 26 | 25.3 | 24.2 | 22.8 | 21.3 | 40 |
| 45 | | | 25.3 | 25.1 | 24.7 | 23.4 | 23.4 | 22.7 | 21.5 | 20.5 | 19.2 | 18.8 | 45 |
| 50 | | | 21.1 | 21.9 | 21.1 | 21 | 20.2 | 19.5 | 18.4 | 17.6 | 16.4 | 16 | 50 |
| 55 | | | | 18.9 | 18.3 | 18.2 | 17.5 | 16.9 | 15.9 | 15.2 | 14.1 | 13.8 | 55 |
| 60 | | | | 16.2 | 16 | 16 | 15.3 | 14.8 | 13.8 | 13.2 | 12.1 | 11.9 | 60 |
| 65 | | | | | 14 | 14.1 | 13.5 | 13 | 12.1 | 11.5 | 10.5 | 10.3 | 65 |
| 70 | | | | | 12.2 | 12.4 | 11.9 | 11.5 | 10.6 | 10.1 | 9.1 | 8.9 | 70 |
| 75 | | | | | 10.7 | 10.8 | 10.5 | 10.2 | 9.3 | 8.8 | 7.9 | 7.7 | 75 |
| 80 | | | | | | 9.5 | 9.2 | 9 | 8.2 | 7.7 | 6.8 | 6.7 | 80 |
| 85 | | | | | | 8.5 | 8.2 | 8 | 7.3 | 6.8 | 5.9 | 5.8 | 85 |
| 90 | | | | | | | 7.3 | 7.1 | 6.4 | 5.9 | 5 | 5 | 90 |
| 95 | | | | | | | 6.5 | 6.3 | 5.7 | 5.2 | 4.3 | 4.2 | 95 |
| 100 | | | | | | | | 5.6 | 5 | 4.5 | 3.7 | 3.6 | 100 |
| 105 | | | | | | | | 4.9 | 4.3 | 3.9 | 3.1 | 3 | 105 |
| 110 | | | | | | | | 4.3 | 3.7 | 3.4 | 2.6 | 2.5 | 110 |
| 115 | | | | | | | | | 3.2 | 2.8 | 2 | 1.9 | 115 |
| 120 | | | | | | | | | 2.7 | 2.3 | | | 120 |
| 125 | | | | | | | | | | 1.8 | | | 125 |

t_207_50326_00_000

Lifting capacities Forces de levage

T



| | 36 ft | 48 ft | 60 ft | 72 ft | 83 ft | 95 ft | 107 ft | 118 ft | 130 ft | 142 ft | 154 ft | 164 ft | |
|-----|-------|-------|-------|-------|-------|-------|--------|--------|--------|--------|--------|--------|-----|
| 10 | 139.5 | 139.5 | 139.5 | 118 | | | | | | | | | 10 |
| 11 | 139.5 | 139.5 | 137.9 | 118 | 95.8 | | | | | | | | 11 |
| 12 | 139.2 | 138 | 132.8 | 118 | 95.8 | | | | | | | | 12 |
| 13 | 136.6 | 132.5 | 126.7 | 118 | 95.8 | 82.7 | | | | | | | 13 |
| 14 | 129.3 | 127.5 | 120.6 | 113 | 95.8 | 82.2 | | | | | | | 14 |
| 15 | 122.7 | 121.9 | 113.6 | 103.7 | 95 | 81.6 | | | | | | | 15 |
| 16 | 114.8 | 113.6 | 104.1 | 94.8 | 88.6 | 80.7 | 61.2 | | | | | | 16 |
| 17 | 107.7 | 103.6 | 96.9 | 89.1 | 82.5 | 77.2 | 61.2 | | | | | | 17 |
| 18 | 101.2 | 95 | 88.9 | 83.6 | 78.8 | 72.9 | 61.2 | 37.3 | | | | | 18 |
| 19 | 92.4 | 87.1 | 82 | 78.6 | 73.3 | 67.9 | 60.6 | 53.4 | | | | | 19 |
| 20 | 85 | 80.3 | 76.8 | 73.2 | 68.5 | 63.7 | 59.7 | 53.3 | | | | | 20 |
| 22 | 73 | 69.4 | 67.7 | 64.4 | 60.3 | 56.6 | 53.4 | 49.8 | 42.6 | | | | 22 |
| 24 | 63.6 | 61.7 | 59.7 | 57.1 | 53.7 | 51.6 | 48.3 | 46 | 41.6 | 25 | | | 24 |
| 26 | 56.3 | 54.9 | 53.4 | 51.2 | 48.4 | 46.5 | 44.5 | 41.6 | 38.8 | 34 | | | 26 |
| 28 | 49.8 | 49.2 | 48.1 | 46.1 | 44 | 42.6 | 40.3 | 37.6 | 36.7 | 33.8 | 25 | | 28 |
| 30 | | 44.4 | 43.5 | 41.8 | 39.8 | 39.2 | 36.8 | 35.3 | 33.5 | 31.3 | 25 | 21.8 | 30 |
| 32 | | 40.1 | 39.4 | 37.9 | 36.9 | 35.7 | 34.1 | 32.5 | 30.6 | 28.8 | 25 | 21.8 | 32 |
| 34 | | 36.5 | 35.9 | 34.6 | 34.5 | 32.8 | 31.4 | 30.2 | 29.1 | 26.4 | 24.9 | 21.8 | 34 |
| 36 | | 33.4 | 33 | 31.8 | 31.9 | 30.2 | 29.5 | 27.9 | 27.2 | 24.9 | 24.4 | 21.8 | 36 |
| 38 | | 30.4 | 30.3 | 29.3 | 29.5 | 27.9 | 27.6 | 26.4 | 25.3 | 24.2 | 22.7 | 21.6 | 38 |
| 40 | | 27.7 | 28.2 | 27.8 | 27.3 | 25.9 | 25.7 | 24.9 | 23.6 | 22.5 | 21.1 | 20.5 | 40 |
| 45 | | | 23.6 | 23.9 | 23 | 22.8 | 21.9 | 21.1 | 19.9 | 19 | 17.7 | 17.3 | 45 |
| 50 | | | 19.6 | 20.3 | 19.6 | 19.5 | 18.7 | 18.1 | 17 | 16.2 | 15.1 | 14.7 | 50 |
| 55 | | | | 17.5 | 17.1 | 16.9 | 16.2 | 15.6 | 14.6 | 13.9 | 12.8 | 12.6 | 55 |
| 60 | | | | 14.9 | 14.9 | 14.8 | 14.1 | 13.6 | 12.7 | 12.1 | 11 | 10.8 | 60 |
| 65 | | | | | 12.9 | 12.9 | 12.3 | 11.9 | 11 | 10.4 | 9.5 | 9.3 | 65 |
| 70 | | | | | 11.1 | 11.3 | 10.9 | 10.4 | 9.6 | 9.1 | 8.1 | 8 | 70 |
| 75 | | | | | 9.7 | 9.8 | 9.6 | 9.2 | 8.4 | 7.9 | 7 | 6.8 | 75 |
| 80 | | | | | | 8.6 | 8.4 | 8.1 | 7.4 | 6.8 | 6 | 5.8 | 80 |
| 85 | | | | | | 7.7 | 7.4 | 7.2 | 6.5 | 5.9 | 5.1 | 5 | 85 |
| 90 | | | | | | | 6.6 | 6.4 | 5.6 | 5.1 | 4.3 | 4.2 | 90 |
| 95 | | | | | | | 5.8 | 5.6 | 4.9 | 4.5 | 3.6 | 3.5 | 95 |
| 100 | | | | | | | | 4.9 | 4.3 | 3.8 | 3 | 2.9 | 100 |
| 105 | | | | | | | | 4.2 | 3.7 | 3.2 | 2.4 | 2.3 | 105 |
| 110 | | | | | | | | 3.7 | 3.1 | 2.7 | 1.8 | | 110 |
| 115 | | | | | | | | | 2.6 | 2.2 | | | 115 |
| 120 | | | | | | | | | 2.1 | | | | 120 |

t_207_50329_00_000

Lifting capacities Forces de levage

T



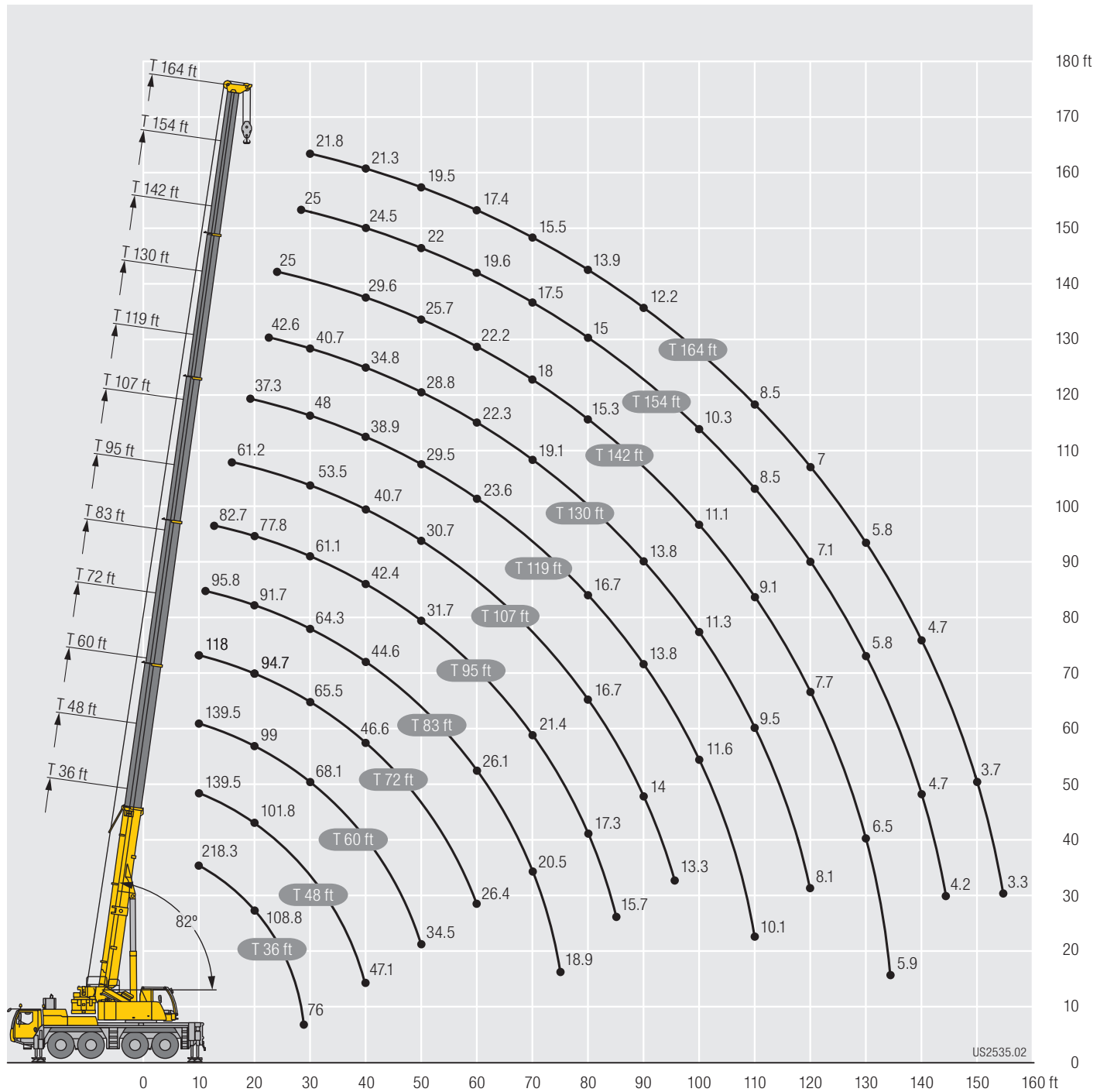
| | 36 ft | 48 ft | 60 ft | |
|----|-------|-------|-------|----|
| 10 | 42.8 | 44 | 44.2 | 10 |
| 11 | 39.9 | 41 | 41.9 | 11 |
| 12 | 37.6 | 38.9 | 39.7 | 12 |
| 13 | 34.8 | 36.6 | 37.2 | 13 |
| 14 | 32.7 | 33.9 | 34.6 | 14 |
| 15 | 30.8 | 32.1 | 32.7 | 15 |
| 16 | 29.1 | 30.3 | 31.1 | 16 |
| 17 | 27.5 | 28.7 | 29.5 | 17 |
| 18 | 26 | 27.3 | 28.1 | 18 |
| 19 | 24.6 | 25.9 | 26.7 | 19 |
| 20 | 23.3 | 24.6 | 25.4 | 20 |
| 22 | 21 | 22.3 | 23.1 | 22 |
| 24 | 18.9 | 20.2 | 21.1 | 24 |
| 26 | 17 | 18.4 | 19.3 | 26 |
| 28 | 15.4 | 16.8 | 17.7 | 28 |
| 30 | | 15.4 | 16.2 | 30 |
| 32 | | 14.1 | 14.9 | 32 |
| 34 | | 13 | 13.8 | 34 |
| 36 | | 11.8 | 12.8 | 36 |
| 38 | | 10.8 | 11.7 | 38 |
| 40 | | 9.9 | 10.8 | 40 |
| 45 | | | 8.9 | 45 |
| 50 | | | 7.3 | 50 |

0° = over rear / en arrière

t_207_00901_00_000

Lifting heights Hauteurs de levage

T



US2535.02

Lifting capacities Forces de levage

TK

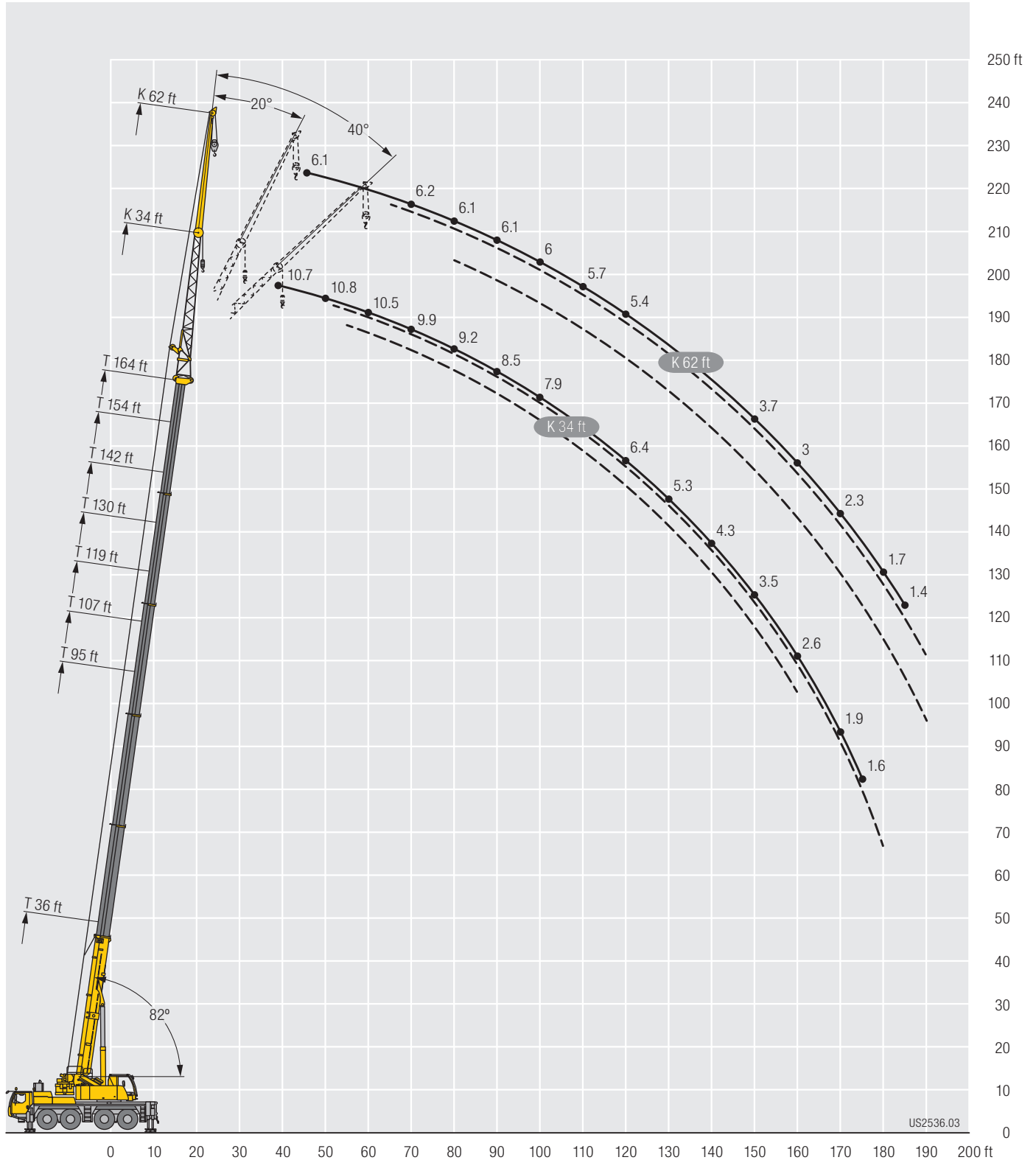


| ↙ ↘ | 36 ft | | | 83 ft | | | 95 ft | | | 107 ft | | | 119 ft | | | 130 ft | | | 142 ft | | | 154 ft | | | 164 ft | | | ↙ ↘ |
|--------|-------|------|------|-------|------|------|-------|------|------|--------|------|------|--------|------|------|--------|------|------|--------|------|------|--------|------|------|--------|------|-----|--------|
| | 34 ft | | | 34 ft | | | 34 ft | | | 34 ft | | | 34 ft | | | 34 ft | | | 34 ft | | | 34 ft | | | | | | |
| | 0° | 20° | 40° | 0° | 20° | 40° | 0° | 20° | 40° | 0° | 20° | 40° | 0° | 20° | 40° | 0° | 20° | 40° | 0° | 20° | 40° | 0° | 20° | 40° | 0° | 20° | 40° | |
| 12 | 25 | | | | | | | | | | | | | | | | | | | | | | | | | | 12 | |
| 13 | 25 | | | | | | | | | | | | | | | | | | | | | | | | | | | 13 |
| 14 | 25 | | | | | | | | | | | | | | | | | | | | | | | | | | | 14 |
| 15 | 25 | 22.3 | | | | | | | | | | | | | | | | | | | | | | | | | | 15 |
| 16 | 25 | 22.3 | | 25 | | | | | | | | | | | | | | | | | | | | | | | | 16 |
| 17 | 25 | 22.3 | | 25 | | | | | | | | | | | | | | | | | | | | | | | | 17 |
| 18 | 25 | 22.3 | | 25 | | | 25 | | | | | | | | | | | | | | | | | | | | | 18 |
| 19 | 25 | 22.2 | | 25 | | | 25 | | | | | | | | | | | | | | | | | | | | | 19 |
| 20 | 25 | 21.9 | | 25 | | | 25 | | | | | | | | | | | | | | | | | | | | | 20 |
| 22 | 25 | 21.1 | | 25 | | | 25 | | 25 | | | | | | | | | | | | | | | | | | | 22 |
| 24 | 24.8 | 20.3 | 16.5 | 25 | | | 25 | | 25 | | | | | | | | | | | | | | | | | | | 24 |
| 26 | 23.7 | 19.6 | 16.4 | 25 | | | 25 | | 25 | | | 24 | | | | | | | | | | | | | | | | 26 |
| 28 | 22.5 | 19 | 16 | 25 | 22.3 | | 25 | | 25 | | | 24.1 | | | 20.3 | | | | | | | | | | | | | 28 |
| 30 | 21.5 | 18.4 | 15.7 | 25 | 22.2 | | 25 | 22.3 | 25 | | | 24.1 | | | 20.4 | | | 17 | | | | | | | | | | 30 |
| 32 | 20.4 | 17.8 | 15.4 | 25 | 21.8 | | 25 | 21.9 | 25 | | | 23.9 | | | 20.5 | | | 17.1 | | | | | | | | | | 32 |
| 34 | 19.4 | 17.3 | 15.1 | 25 | 21.3 | | 25 | 21.4 | 25 | 21.1 | | 23.8 | | | 20.5 | | | 17.1 | | | 12.4 | | | | | | | 34 |
| 36 | 18.4 | 16.8 | 14.8 | 25 | 20.8 | 16.4 | 25 | 21 | 25 | 20.7 | | 23.6 | | | 20.4 | | | 17.1 | | | 12.4 | | | | | | | 36 |
| 38 | 17.5 | 16.4 | 14.6 | 25 | 20.4 | 16.2 | 25 | 20.6 | 16.3 | 25 | 20.3 | 23.3 | 19.7 | | 20.4 | | | 17 | | | 12.4 | | | | 10.7 | | | 38 |
| 40 | 16.6 | 15.8 | 14.4 | 25 | 20 | 16 | 25 | 20.2 | 16.1 | 24.9 | 19.9 | 23 | 19.4 | | 20.3 | 18.3 | | 17 | 12.6 | | 12.4 | | | | 10.8 | | | 40 |
| 45 | 14.7 | 14.4 | 13.8 | 24.7 | 19 | 15.5 | 24.7 | 19.3 | 15.6 | 24 | 19.1 | 15.6 | 22.3 | 18.7 | 15 | 19.9 | 17.7 | 17 | 16.3 | | 12.4 | | | | 10.8 | | | 45 |
| 50 | 13.1 | 13.3 | 13 | 22.9 | 18.1 | 15.1 | 23.6 | 18.4 | 15.2 | 23 | 18.4 | 15.2 | 21.5 | 18 | 15 | 19.4 | 17.2 | 14.6 | 16.7 | 15.7 | 12.6 | 12.4 | 12.3 | | 10.8 | 10.9 | | 50 |
| 55 | 11.8 | 12.3 | 12.3 | 21.3 | 17.4 | 14.8 | 22.3 | 17.7 | 14.9 | 22 | 17.7 | 14.8 | 20.8 | 17.5 | 14.7 | 18.8 | 16.7 | 14.4 | 16.1 | 15 | 12.6 | 12.4 | 11.9 | 11.2 | 10.7 | 10.5 | 9.7 | 55 |
| 60 | 10.7 | 11.6 | 12 | 19.8 | 16.7 | 14.5 | 21 | 17 | 14.6 | 21 | 17.1 | 14.5 | 20.1 | 16.9 | 14.4 | 18 | 16.3 | 14.1 | 15.4 | 14.3 | 12.6 | 12 | 11.4 | 10.7 | 10.5 | 10.2 | 9.7 | 60 |
| 65 | | | | 18.3 | 16 | 14.2 | 19.7 | 16.4 | 14.3 | 19.9 | 16.6 | 14.3 | 19.4 | 16.4 | 14.2 | 17.2 | 15.9 | 13.9 | 14.6 | 13.6 | 12.5 | 11.6 | 10.9 | 10.3 | 10.2 | 9.9 | 9.5 | 65 |
| 70 | | | | 16.9 | 15.1 | 13.9 | 18.4 | 15.8 | 14.1 | 18.6 | 16 | 14.1 | 17.6 | 16 | 14 | 16.3 | 15.4 | 13.7 | 13.8 | 12.9 | 12 | 11.1 | 10.4 | 10 | 9.9 | 9.5 | 9.2 | 70 |
| 75 | | | | 15.7 | 14.4 | 13.5 | 17.1 | 15.2 | 13.8 | 17 | 15.5 | 13.9 | 15.8 | 15.5 | 13.8 | 15.4 | 14.7 | 13.6 | 13.1 | 12.3 | 11.5 | 10.6 | 10 | 9.7 | 9.5 | 9.2 | 8.9 | 75 |
| 80 | | | | 14.6 | 13.7 | 13 | 16 | 14.5 | 13.5 | 15.4 | 14.9 | 13.7 | 14.3 | 14.8 | 13.6 | 14 | 14 | 13.3 | 12.4 | 11.7 | 11 | 10.1 | 9.7 | 9.3 | 9.2 | 8.9 | 8.7 | 80 |
| 85 | | | | 13.6 | 13.1 | 12.6 | 14.8 | 13.9 | 13.1 | 14 | 14.2 | 13.3 | 13.4 | 13.7 | 13.4 | 12.6 | 13.2 | 13.1 | 11.8 | 11.1 | 10.6 | 9.7 | 9.3 | 9.1 | 8.8 | 8.5 | 8.4 | 85 |
| 90 | | | | 12.7 | 12.6 | 12.3 | 13.7 | 13.3 | 12.7 | 12.8 | 13.4 | 13 | 12.4 | 12.4 | 12.9 | 11.4 | 12.2 | 12.5 | 11.2 | 10.6 | 10.2 | 9.3 | 9 | 8.8 | 8.5 | 8.2 | 8.1 | 90 |
| 95 | | | | 12 | 12.1 | 12.1 | 12.5 | 12.6 | 12.4 | 11.7 | 12.3 | 12.6 | 11.4 | 11.6 | 11.8 | 10.4 | 11.1 | 11.6 | 10.3 | 10.2 | 9.8 | 9 | 8.7 | 8.5 | 8.2 | 7.9 | 7.8 | 95 |
| 100 | | | | 11.3 | 11.7 | | 11.3 | 11.7 | 11.9 | 10.7 | 11.2 | 11.6 | 10.4 | 10.9 | 11 | 9.9 | 10.1 | 10.6 | 9.4 | 9.8 | 9.5 | 8.6 | 8.4 | 8.3 | 7.9 | 7.7 | 7.6 | 100 |
| 105 | | | | 10.7 | 11.2 | | 10.3 | 10.6 | 10.8 | 9.7 | 10.1 | 10.4 | 9.5 | 10 | 10.3 | 9.3 | 9.3 | 9.6 | 8.5 | 9.1 | 9.2 | 8.3 | 8.1 | 8 | 7.6 | 7.4 | 7.3 | 105 |
| 110 | | | | 10.2 | | | 9.4 | 9.6 | | 8.8 | 9.2 | 9.3 | 8.7 | 9.1 | 9.4 | 8.6 | 8.9 | 8.8 | 7.9 | 8.3 | 8.8 | 8 | 7.8 | 7.8 | 7.3 | 7.2 | 7.1 | 110 |
| 115 | | | | | | | 8.6 | 8.8 | | 8 | 8.4 | 8.5 | 7.9 | 8.3 | 8.5 | 7.9 | 8.3 | 8.4 | 7.6 | 7.5 | 8.1 | 7.3 | 7.6 | 7.5 | 7.1 | 6.9 | 6.9 | 115 |
| 120 | | | | | | | 7.9 | 8 | | 7.3 | 7.6 | | 7.2 | 7.6 | 7.8 | 7.3 | 7.7 | 7.9 | 7.3 | 7.2 | 7.3 | 6.7 | 7.1 | 7.3 | 6.4 | 6.7 | 6.7 | 120 |
| 125 | | | | | | | 6.6 | 6.8 | | 6.5 | 6.9 | 7 | 6.8 | 7 | 7.3 | 6.8 | 7 | 7.3 | 6.8 | 7 | 7 | 6.1 | 6.5 | 6.8 | 5.8 | 6.3 | 6.5 | 125 |
| 130 | | | | | | | 6 | 6.1 | | 6.2 | 6.2 | | 6.5 | 6.5 | 6.6 | 6.3 | 6.6 | 6.7 | 6.3 | 6.6 | 6.7 | 5.5 | 5.9 | 6.2 | 5.3 | 5.7 | 6 | 130 |
| 135 | | | | | | | | | | | | | 6 | 6 | | 6.1 | 6.2 | 6.3 | 5.8 | 6.1 | 6.3 | 5 | 5.4 | 5.6 | 4.8 | 5.2 | 5.5 | 135 |
| 140 | | | | | | | | | | | | | 5.8 | 5.9 | | 5.6 | 5.9 | | 5.2 | 5.5 | 5.7 | 4.5 | 4.9 | 5.1 | 4.3 | 4.7 | 5 | 140 |
| 145 | | | | | | | | | | | | | 5.7 | | | 5.1 | 5.4 | | 4.7 | 5 | 5.1 | 4 | 4.4 | 4.6 | 3.9 | 4.2 | 4.4 | 145 |
| 150 | | | | | | | | | | | | | | | | 4.7 | 4.8 | | 4.2 | 4.5 | | 3.6 | 3.9 | 4 | 3.5 | 3.8 | 4 | 150 |
| 155 | | | | | | | | | | | | | | | | 4.3 | | | 3.8 | 4 | | 3.1 | 3.4 | 3.5 | 3 | 3.3 | 3.5 | 155 |
| 160 | | | | | | | | | | | | | | | | | | | 3.4 | 3.5 | | 2.7 | 3 | | 2.6 | 2.9 | 3 | 160 |
| 165 | | | | | | | | | | | | | | | | | | | 3 | 3.1 | | 2.4 | 2.5 | | 2.3 | 2.5 | | 165 |
| 170 | | | | | | | | | | | | | | | | | | | | | | 2 | 2.2 | | 1.9 | 2.1 | | 170 |
| 175 | | | | | | | | | | | | | | | | | | | | | | 1.7 | 1.8 | | 1.6 | 1.8 | | 175 |
| 180 | | | | | | | | | | | | | | | | | | | | | | 1.4 | | | | 1.4 | | 180 |

t_207_51101_00_000 / 51201_00_000 / 51301_00_000

Lifting heights Hauteurs de levage

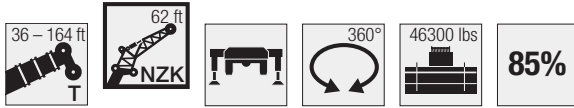
TK



US2536.03

Lifting capacities Forces de levage

TNZK

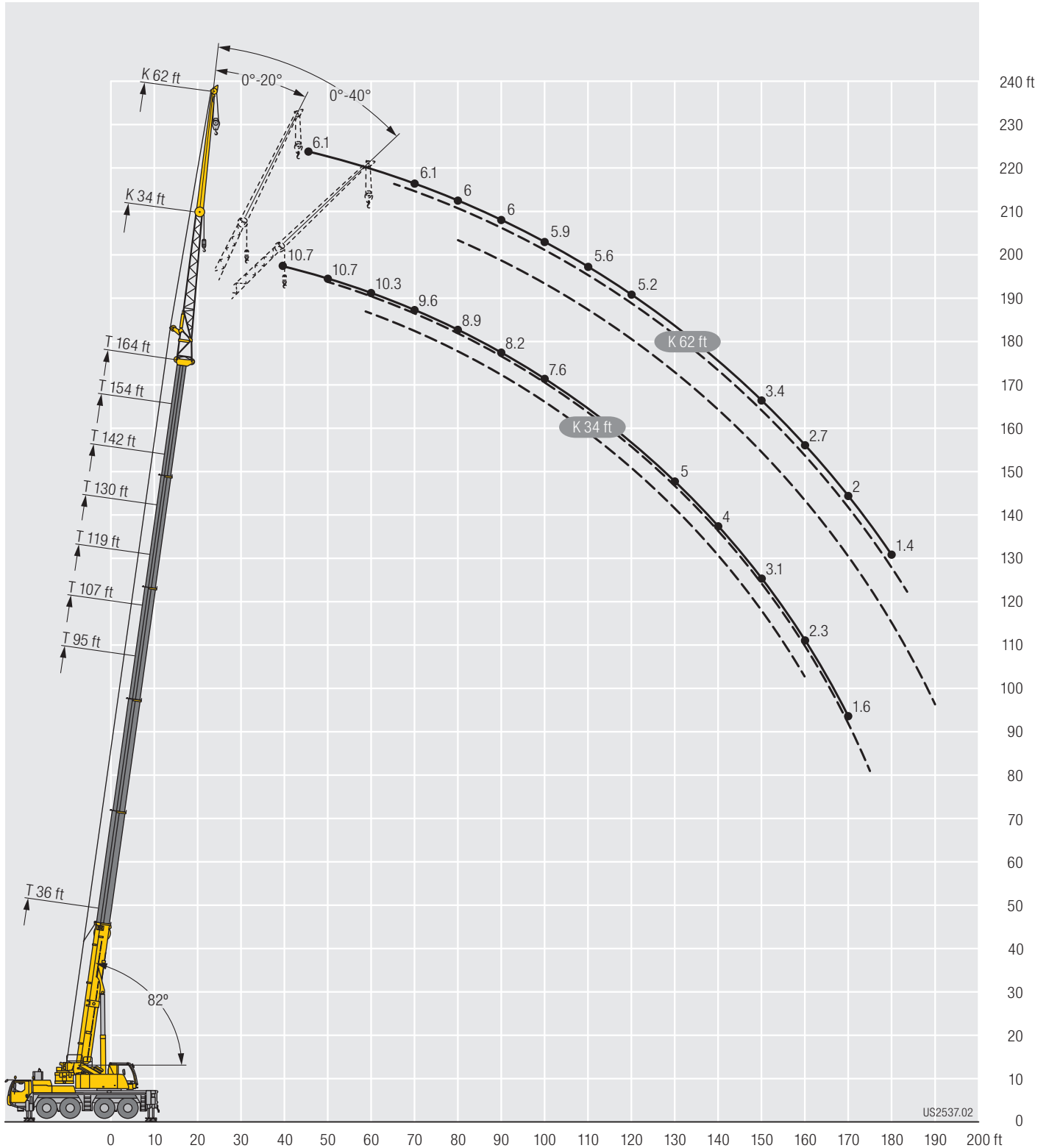


| Jib ↙ ↘ | 36 ft 62 ft | | | 95 ft 62 ft | | | 107 ft 62 ft | | | 119 ft 62 ft | | | 130 ft 62 ft | | | 142 ft 62 ft | | | 154 ft 62 ft | | | 164 ft 62 ft | | | Jib ↙ ↘ | | |
|------------|----------------|-----|-----|----------------|-----|-----|-----------------|-----|-----|-----------------|-----|-----|-----------------|-----|-----|-----------------|-----|-----|-----------------|-----|-----|-----------------|-----|-----|------------|-----|-----|
| | 0° | 20° | 40° | 0° | 20° | 40° | 0° | 20° | 40° | 0° | 20° | 40° | 0° | 20° | 40° | 0° | 20° | 40° | 0° | 20° | 40° | 0° | 20° | 40° | | | |
| 12 | 9 | | | | | | | | | | | | | | | | | | | | | | | | 12 | | |
| 13 | 9 | | | | | | | | | | | | | | | | | | | | | | | | | 13 | |
| 14 | 9 | | | | | | | | | | | | | | | | | | | | | | | | | 14 | |
| 15 | 9 | | | | | | | | | | | | | | | | | | | | | | | | | 15 | |
| 16 | 9 | | | | | | | | | | | | | | | | | | | | | | | | | 16 | |
| 17 | 9 | | | | | | | | | | | | | | | | | | | | | | | | | 17 | |
| 18 | 9 | | | | | | | | | | | | | | | | | | | | | | | | | 18 | |
| 19 | 9 | | | | | | | | | | | | | | | | | | | | | | | | | 19 | |
| 20 | 9 | | | | | | | | | | | | | | | | | | | | | | | | | 20 | |
| 22 | 8.9 | | | | | | | | | | | | | | | | | | | | | | | | | 22 | |
| 24 | 8.7 | | | | | | | | | | | | | | | | | | | | | | | | | 24 | |
| 26 | 8.5 | | | 9 | | | | | | | | | | | | | | | | | | | | | | 26 | |
| 28 | 8.4 | 7.3 | | 9 | | | | | | | | | | | | | | | | | | | | | | 28 | |
| 30 | 8.3 | 7.3 | | 9 | | | 8.5 | | | | | | | | | | | | | | | | | | | 30 | |
| 32 | 8.1 | 7.3 | | 9 | | | 8.5 | | 8.2 | | | | | | | | | | | | | | | | | 32 | |
| 34 | 8 | 7.3 | | 9 | | | 8.5 | | 8.3 | | | | | | | | | | | | | | | | | 34 | |
| 36 | 7.9 | 7.2 | | 9 | | | 8.5 | | 8.3 | | 8.3 | | | | | | | | | | | | | | | 36 | |
| 38 | 7.7 | 7.1 | | 8.9 | | | 8.4 | | 8.3 | | 8.3 | | | 7.8 | | | | | | | | | | | | 38 | |
| 40 | 7.6 | 7 | | 8.8 | | | 8.4 | | 8.3 | | 8.3 | | | 7.8 | | | 6.8 | | | | | | | | | 40 | |
| 45 | 7.3 | 6.7 | 5.9 | 8.6 | 7.3 | | 8.2 | | 8.1 | | 8.2 | | | 7.8 | | | 6.8 | | | 6.1 | | | | | | 45 | |
| 50 | 6.9 | 6.4 | 5.9 | 8.3 | 7.2 | | 8 | 7.1 | 7.9 | 7.1 | 8.1 | | | 7.7 | | | 6.8 | | | 6.1 | | | | | | 50 | |
| 55 | 6.6 | 6.1 | 5.7 | 8.1 | 7.1 | | 7.8 | 6.9 | 7.8 | 7 | 7.9 | 7 | | 7.6 | 6.9 | | 6.8 | | | 6.1 | | | | | | 55 | |
| 60 | 6.1 | 5.9 | 5.6 | 7.9 | 6.9 | 5.9 | 7.7 | 6.8 | 7.6 | 6.8 | 7.7 | 6.9 | | 7.5 | 6.8 | | 6.8 | | | 6.1 | | | | | | 60 | |
| 65 | 5.6 | 5.7 | 5.5 | 7.7 | 6.7 | 5.9 | 7.5 | 6.6 | 5.8 | 7.5 | 6.6 | | 7.6 | 6.8 | | 7.4 | 6.7 | | 6.7 | 6.3 | | 6.1 | 5.8 | | | 65 | |
| 70 | 5.3 | 5.5 | 5.4 | 7.5 | 6.5 | 5.8 | 7.3 | 6.4 | 5.7 | 7.3 | 6.5 | 5.6 | 7.4 | 6.6 | 5.6 | 7.2 | 6.5 | | 6.7 | 6.2 | | 6.1 | 5.8 | | | 70 | |
| 75 | 4.9 | 5.1 | 5.3 | 7.3 | 6.3 | 5.7 | 7.2 | 6.3 | 5.6 | 7.2 | 6.4 | 5.6 | 7.3 | 6.5 | 5.6 | 7.1 | 6.4 | 5.6 | 6.6 | 6.1 | 5.4 | 6.1 | 5.8 | | | 75 | |
| 80 | 4.6 | 4.8 | 5 | 7.1 | 6.2 | 5.6 | 7 | 6.2 | 5.6 | 7 | 6.2 | 5.6 | 7.1 | 6.3 | 5.6 | 7 | 6.3 | 5.6 | 6.5 | 6 | 5.4 | 6 | 5.8 | 5.2 | | 80 | |
| 85 | 4.3 | 4.5 | 4.7 | 6.9 | 6.1 | 5.5 | 6.8 | 6.1 | 5.5 | 6.9 | 6.1 | 5.5 | 7 | 6.2 | 5.5 | 6.9 | 6.2 | 5.5 | 6.4 | 5.9 | 5.3 | 6 | 5.7 | 5.2 | | 85 | |
| 90 | 4.1 | 4.2 | | 6.6 | 6 | 5.5 | 6.6 | 5.9 | 5.4 | 6.8 | 6 | 5.4 | 6.9 | 6.1 | 5.5 | 6.8 | 6 | 5.4 | 6.4 | 5.8 | 5.3 | 6 | 5.6 | 5.2 | | 90 | |
| 95 | | | | 6.4 | 5.8 | 5.4 | 6.4 | 5.8 | 5.4 | 6.6 | 5.9 | 5.4 | 6.7 | 6 | 5.4 | 6.6 | 5.9 | 5.4 | 6.3 | 5.7 | 5.3 | 5.9 | 5.5 | 5.1 | | 95 | |
| 100 | | | | 6.1 | 5.7 | 5.4 | 6.1 | 5.7 | 5.4 | 6.4 | 5.8 | 5.3 | 6.6 | 5.9 | 5.4 | 6.6 | 5.8 | 5.3 | 6.2 | 5.6 | 5.2 | 5.9 | 5.5 | 5.1 | | 100 | |
| 105 | | | | 5.8 | 5.6 | 5.4 | 5.9 | 5.6 | 5.3 | 6.1 | 5.7 | 5.3 | 6.5 | 5.8 | 5.3 | 6.4 | 5.7 | 5.3 | 6.1 | 5.6 | 5.2 | 5.8 | 5.4 | 5.1 | | 105 | |
| 110 | | | | 5.5 | 5.4 | 5.3 | 5.6 | 5.4 | 5.3 | 5.9 | 5.6 | 5.3 | 6.4 | 5.7 | 5.3 | 6.3 | 5.6 | 5.3 | 6 | 5.5 | 5.1 | 5.6 | 5.3 | 5.1 | | 110 | |
| 115 | | | | 5.3 | 5.2 | 5.2 | 5.4 | 5.2 | 5.2 | 5.7 | 5.4 | 5.2 | 6.2 | 5.6 | 5.3 | 6.2 | 5.6 | 5.2 | 5.9 | 5.4 | 5.1 | 5.4 | 5.2 | 5 | | 115 | |
| 120 | | | | 5.1 | 5 | 5 | 5.1 | 5.1 | 5.1 | 5.5 | 5.2 | 5.2 | 6.1 | 5.5 | 5.3 | 6.1 | 5.5 | 5.2 | 5.7 | 5.3 | 5.1 | 5.2 | 5 | 5 | | 120 | |
| 125 | | | | 4.8 | 4.8 | 4.9 | 4.9 | 4.9 | 4.9 | 5.2 | 5.1 | 5 | 6 | 5.5 | 5.3 | 6 | 5.4 | 5.2 | 5.5 | 5.2 | 5.1 | 5 | 4.9 | 4.9 | | 125 | |
| 130 | | | | 4.6 | 4.6 | 4.7 | 4.7 | 4.7 | 4.8 | 5 | 4.9 | 4.9 | 5.8 | 5.4 | 5.3 | 5.4 | 5.4 | 5.2 | 5.4 | 5.1 | 5 | 4.9 | 4.8 | 4.8 | | 130 | |
| 135 | | | | 4.4 | 4.5 | | 4.5 | 4.5 | 4.6 | 4.8 | 4.8 | 4.8 | 5.6 | 5.4 | 5.3 | 5.1 | 5.3 | 5.2 | 5 | 5 | 4.9 | 4.6 | 4.6 | 4.7 | | 135 | |
| 140 | | | | 4.3 | 4.3 | | 4.3 | 4.3 | 4.4 | 4.6 | 4.6 | 4.7 | 5.2 | 5.3 | 5.3 | 4.9 | 5.1 | 5.2 | 4.5 | 4.9 | 4.9 | 4.3 | 4.5 | 4.6 | | 140 | |
| 145 | | | | 4.1 | 4.2 | | 4.1 | 4.1 | | 4.5 | 4.5 | 4.6 | 4.8 | 5.2 | 5.3 | 4.7 | 4.7 | 5.1 | 4.1 | 4.7 | 4.8 | 3.8 | 4.4 | 4.4 | | 145 | |
| 150 | | | | 4.1 | | | 3.9 | 4 | | 4.3 | 4.3 | 4.4 | 4.4 | 4.9 | 5.2 | 4.4 | 4.6 | 4.6 | 3.7 | 4.3 | 4.6 | 3.4 | 4.1 | 4.3 | | 150 | |
| 155 | | | | | | | 3.8 | 3.9 | | 4.1 | 4.2 | | 4.3 | 4.4 | 4.7 | 4 | 4.4 | 4.5 | 3.3 | 3.9 | 4.3 | 3 | 3.7 | 4.2 | | 155 | |
| 160 | | | | | | | 3.7 | | | 4 | 4 | | 4 | 4.2 | 4.3 | 3.6 | 4.1 | 4.3 | 2.9 | 3.5 | 3.9 | 2.7 | 3.3 | 3.7 | | 160 | |
| 165 | | | | | | | | | | 3.9 | 3.9 | | 3.7 | 4 | | 3.2 | 3.7 | 4 | 2.6 | 3.1 | 3.4 | 2.4 | 2.9 | 3.3 | | 165 | |
| 170 | | | | | | | | | | 3.8 | 3.9 | | 3.4 | 3.7 | | 2.9 | 3.3 | 3.5 | 2.2 | 2.7 | 3 | 2 | 2.6 | 2.9 | | 170 | |
| 175 | | | | | | | | | | | | | 3 | 3.3 | | 2.5 | 2.9 | | 1.9 | 2.4 | 2.6 | 1.7 | 2.2 | 2.5 | | 175 | |
| 180 | | | | | | | | | | | | | 2.7 | 2.9 | | 2.2 | 2.5 | | 1.6 | 2 | 2.2 | 1.4 | 1.9 | 2.2 | | 180 | |
| 185 | | | | | | | | | | | | | 2.5 | | | 1.9 | 2.2 | | | 1.7 | | | 1.6 | 1.8 | | 185 | |
| 190 | | | | | | | | | | | | | | | | | | | | | | | | 1.4 | | | 190 |
| 195 | | | | | | | | | | | | | | | | | | | | | | | | | | | 195 |

t_207_51801_00_000

Lifting heights Hauteurs de levage

TNZK



Lifting capacities Forces de levage

TVK



| ↙ | 36 ft + 23 ft | | | 130 ft + 23 ft | | | 142 ft + 23 ft | | | 154 ft + 23 ft | | | 164 ft + 23 ft | | | ↘ |
|-----|---------------|-----|-----|----------------|-----|-----|----------------|-----|-----|----------------|-----|-----|----------------|-----|-----|-----|
| | 34 ft | | | 34 ft | | | 34 ft | | | 34 ft | | | 34 ft | | | |
| | 0° | 20° | 40° | 0° | 20° | 40° | 0° | 20° | 40° | 0° | 20° | 40° | 0° | 20° | 40° | |
| 12 | 9.2 | | | | | | | | | | | | | | | 12 |
| 13 | 9.2 | | | | | | | | | | | | | | | 13 |
| 14 | 9.2 | | | | | | | | | | | | | | | 14 |
| 15 | 9.2 | | | | | | | | | | | | | | | 15 |
| 16 | 9.2 | | | | | | | | | | | | | | | 16 |
| 17 | 9.2 | | | | | | | | | | | | | | | 17 |
| 18 | 9.2 | | | | | | | | | | | | | | | 18 |
| 19 | 9.2 | 8.7 | | | | | | | | | | | | | | 19 |
| 20 | 9.2 | 8.7 | | | | | | | | | | | | | | 20 |
| 22 | 9.2 | 8.7 | | | | | | | | | | | | | | 22 |
| 24 | 9.1 | 8.7 | | | | | | | | | | | | | | 24 |
| 26 | 9.1 | 8.7 | | | | | | | | | | | | | | 26 |
| 28 | 9 | 8.7 | 8.3 | | | | | | | | | | | | | 28 |
| 30 | 8.7 | 8.7 | 8.3 | | | | | | | | | | | | | 30 |
| 32 | 8.4 | 8.5 | 8.3 | 9.2 | | | | | | | | | | | | 32 |
| 34 | 8.1 | 8.4 | 8.3 | 9.2 | | | 8.5 | | | | | | | | | 34 |
| 36 | 7.8 | 8.1 | 8.2 | 9.2 | | | 8.5 | | | | | | | | | 36 |
| 38 | 7.5 | 7.8 | 8 | 9.2 | | | 8.5 | | | 8 | | | | | | 38 |
| 40 | 7.3 | 7.5 | 7.8 | 9.2 | | | 8.5 | | | 8.1 | | | 7 | | | 40 |
| 45 | 6.7 | 6.9 | 7.2 | 9.2 | 8.7 | | 8.5 | | | 8.1 | | | 7.1 | | | 45 |
| 50 | 6.2 | 6.4 | 6.6 | 9.2 | 8.7 | | 8.5 | 8.5 | | 8.1 | 8 | | 7.1 | | | 50 |
| 55 | 5.7 | 5.9 | 6.1 | 9.1 | 8.7 | 8.3 | 8.5 | 8.5 | 8.2 | 8.1 | 8 | | 7.1 | 7 | | 55 |
| 60 | 5.3 | 5.4 | 5.6 | 9.1 | 8.6 | 8.2 | 8.5 | 8.4 | 8 | 8 | 8 | 7.5 | 7.1 | 7 | | 60 |
| 65 | 4.9 | 5.1 | 5.2 | 8.9 | 8.4 | 8.1 | 8.5 | 8.2 | 7.8 | 8 | 7.8 | 7.5 | 7.1 | 7 | 6.8 | 65 |
| 70 | 4.5 | 4.7 | 4.8 | 8.5 | 8.1 | 7.8 | 8.3 | 8 | 7.7 | 7.9 | 7.6 | 7.4 | 7 | 7 | 6.8 | 70 |
| 75 | 4.2 | 4.3 | 4.5 | 8.1 | 7.7 | 7.5 | 8 | 7.7 | 7.4 | 7.8 | 7.5 | 7.2 | 6.9 | 6.8 | 6.7 | 75 |
| 80 | 3.9 | 4 | 4.1 | 7.7 | 7.4 | 7.2 | 7.7 | 7.4 | 7.2 | 7.6 | 7.2 | 7 | 6.8 | 6.6 | 6.5 | 80 |
| 85 | 3.7 | 3.7 | | 7.4 | 7.1 | 6.9 | 7.4 | 7.1 | 6.9 | 7.3 | 7 | 6.8 | 6.6 | 6.4 | 6.3 | 85 |
| 90 | | | | 7.1 | 6.8 | 6.7 | 7.1 | 6.8 | 6.7 | 7 | 6.8 | 6.6 | 6.4 | 6.2 | 6.1 | 90 |
| 95 | | | | 6.8 | 6.5 | 6.4 | 6.9 | 6.6 | 6.4 | 6.8 | 6.5 | 6.4 | 6.2 | 6 | 5.9 | 95 |
| 100 | | | | 6.5 | 6.3 | 6.2 | 6.6 | 6.3 | 6.2 | 6.6 | 6.3 | 6.2 | 6 | 5.8 | 5.8 | 100 |
| 105 | | | | 6.3 | 6.1 | 6 | 6.3 | 6.1 | 6 | 6.3 | 6.1 | 6 | 5.8 | 5.6 | 5.6 | 105 |
| 110 | | | | 6 | 5.8 | 5.8 | 6.1 | 5.9 | 5.8 | 6.1 | 5.9 | 5.8 | 5.6 | 5.5 | 5.4 | 110 |
| 115 | | | | 5.8 | 5.6 | 5.6 | 5.9 | 5.7 | 5.6 | 5.9 | 5.7 | 5.7 | 5.4 | 5.3 | 5.2 | 115 |
| 120 | | | | 5.6 | 5.4 | 5.4 | 5.7 | 5.5 | 5.5 | 5.7 | 5.6 | 5.5 | 5.2 | 5.1 | 5.1 | 120 |
| 125 | | | | 5.3 | 5.2 | 5.2 | 5.5 | 5.3 | 5.3 | 5.5 | 5.4 | 5.3 | 5 | 5 | 5 | 125 |
| 130 | | | | 5.1 | 5.1 | 5.1 | 5.3 | 5.2 | 5.2 | 5.2 | 5.2 | 5.2 | 4.8 | 4.8 | 4.8 | 130 |
| 135 | | | | 4.9 | 4.9 | 4.9 | 5.1 | 5 | 5 | 4.7 | 5.1 | 5 | 4.5 | 4.7 | 4.7 | 135 |
| 140 | | | | 4.8 | 4.7 | 4.8 | 4.9 | 4.9 | 4.9 | 4.3 | 4.7 | 4.9 | 4 | 4.4 | 4.5 | 140 |
| 145 | | | | 4.6 | 4.6 | 4.6 | 4.6 | 4.7 | 4.7 | 3.8 | 4.2 | 4.4 | 3.6 | 4 | 4.2 | 145 |
| 150 | | | | 4.4 | 4.4 | 4.4 | 4.2 | 4.4 | 4.5 | 3.4 | 3.7 | 4 | 3.2 | 3.6 | 3.8 | 150 |
| 155 | | | | 4.1 | 4.3 | | 3.7 | 4 | 4.2 | 3 | 3.3 | 3.5 | 2.8 | 3.1 | 3.4 | 155 |
| 160 | | | | 3.8 | 4 | | 3.3 | 3.6 | 3.7 | 2.7 | 2.9 | 3.1 | 2.4 | 2.8 | 3 | 160 |
| 165 | | | | 3.4 | 3.6 | | 3 | 3.2 | | 2.3 | 2.6 | 2.7 | 2.1 | 2.4 | 2.6 | 165 |
| 170 | | | | 3.1 | 3.2 | | 2.6 | 2.8 | | 1.9 | 2.2 | 2.3 | 1.8 | 2.1 | 2.2 | 170 |
| 175 | | | | 2.8 | 2.8 | | 2.2 | 2.4 | | 1.6 | 1.8 | | 1.4 | 1.7 | 1.9 | 175 |
| 180 | | | | 2.5 | | | 1.9 | 2.1 | | | 1.5 | | | 1.4 | 1.5 | 180 |
| 185 | | | | | | | 1.7 | 1.7 | | | | | | | | 185 |
| 190 | | | | | | | 1.4 | | | | | | | | | 190 |

t_207_52101_00_000 / 52201_00_000 / 52301_00_000

Lifting capacities Forces de levage

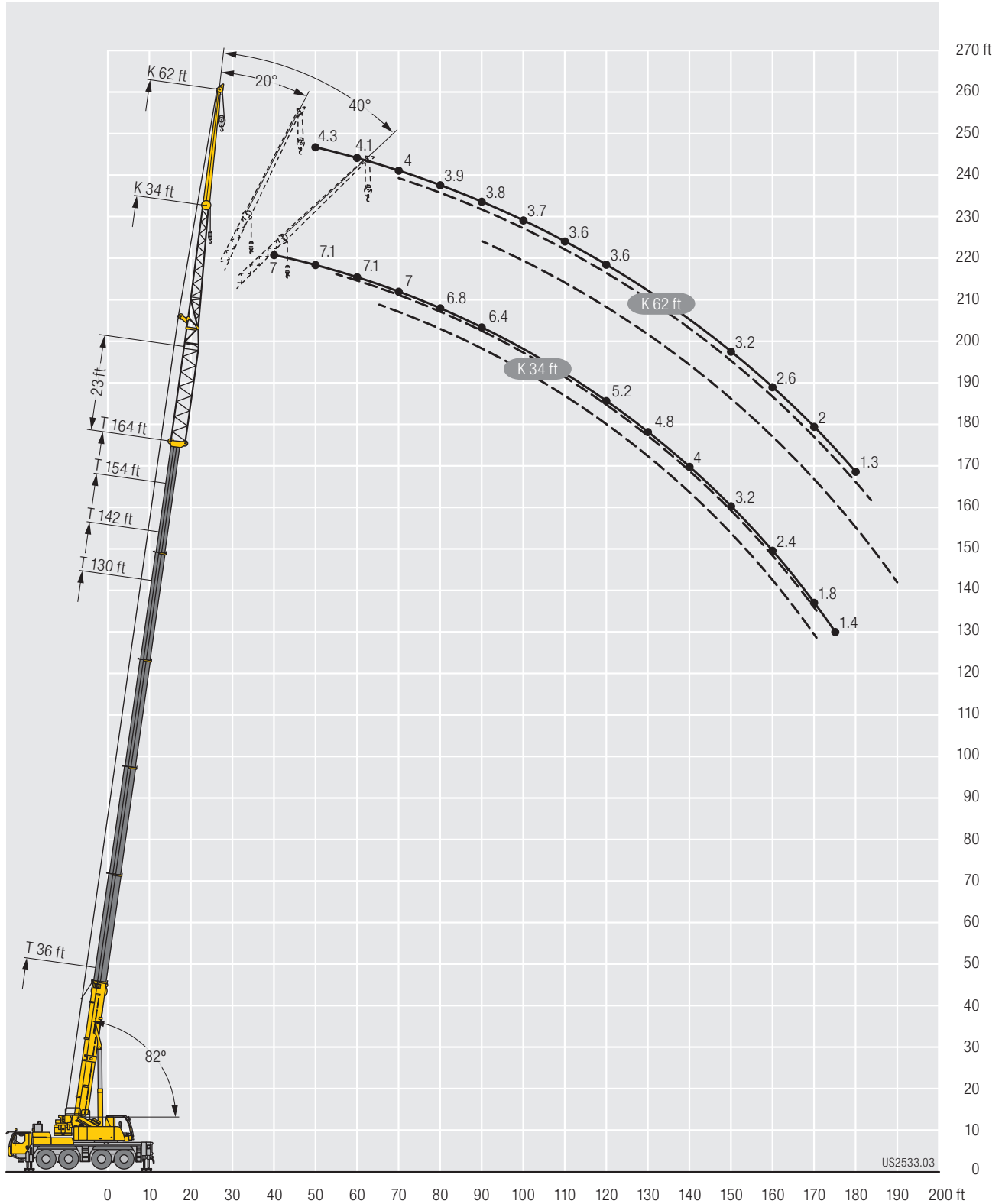
TVK



| ↙ | 36 ft + 23 ft | | | 130 ft + 23 ft | | | 142 ft + 23 ft | | | 154 ft + 23 ft | | | 164 ft + 23 ft | | | ↘ |
|-----|---------------|-----|-----|----------------|-----|-----|----------------|-----|-----|----------------|-----|-----|----------------|-----|-----|-----|
| | 62 ft | | | 62 ft | | | 62 ft | | | 62 ft | | | 62 ft | | | |
| | 0° | 20° | 40° | 0° | 20° | 40° | 0° | 20° | 40° | 0° | 20° | 40° | 0° | 20° | 40° | |
| 15 | 5.8 | | | | | | | | | | | | | | | 15 |
| 16 | 5.8 | | | | | | | | | | | | | | | 16 |
| 17 | 5.8 | | | | | | | | | | | | | | | 17 |
| 18 | 5.8 | | | | | | | | | | | | | | | 18 |
| 19 | 5.8 | | | | | | | | | | | | | | | 19 |
| 20 | 5.8 | | | | | | | | | | | | | | | 20 |
| 22 | 5.8 | | | | | | | | | | | | | | | 22 |
| 24 | 5.8 | | | | | | | | | | | | | | | 24 |
| 26 | 5.8 | | | | | | | | | | | | | | | 26 |
| 28 | 5.8 | | | | | | | | | | | | | | | 28 |
| 30 | 5.8 | | | | | | | | | | | | | | | 30 |
| 32 | 5.8 | | | | | | | | | | | | | | | 32 |
| 34 | 5.8 | 5.3 | | | | | | | | | | | | | | 34 |
| 36 | 5.7 | 5.3 | | | | | | | | | | | | | | 36 |
| 38 | 5.7 | 5.3 | | 5.8 | | | 5.3 | | | | | | | | | 38 |
| 40 | 5.6 | 5.3 | | 5.8 | | | 5.3 | | | 5 | | | | | | 40 |
| 45 | 5.3 | 5.3 | | 5.8 | | | 5.3 | | | 5.1 | | | | | | 45 |
| 50 | 5.1 | 5.1 | 4.6 | 5.8 | | | 5.3 | | | 5.2 | | | 4.3 | | | 50 |
| 55 | 4.8 | 4.8 | 4.6 | 5.8 | | | 5.3 | | | 5.2 | | | 4.2 | | | 55 |
| 60 | 4.6 | 4.6 | 4.6 | 5.8 | 5.3 | | 5.3 | | | 5.2 | | | 4.1 | | | 60 |
| 65 | 4.3 | 4.4 | 4.5 | 5.8 | 5.3 | | 5.3 | 5.1 | | 5.2 | | | 4 | | | 65 |
| 70 | 4.1 | 4.2 | 4.3 | 5.7 | 5.3 | | 5.3 | 5.1 | | 5.2 | 4.9 | | 4 | 4.2 | | 70 |
| 75 | 3.8 | 4 | 4.1 | 5.7 | 5.2 | | 5.3 | 5.1 | | 5.1 | 4.8 | | 3.9 | 4.2 | | 75 |
| 80 | 3.6 | 3.8 | 3.9 | 5.5 | 5.1 | 4.6 | 5.3 | 5 | 4.4 | 5.1 | 4.8 | | 3.9 | 4.1 | | 80 |
| 85 | 3.4 | 3.6 | 3.7 | 5.4 | 5 | 4.6 | 5.2 | 4.9 | 4.4 | 5 | 4.7 | 4.4 | 3.8 | 4 | | 85 |
| 90 | 3.2 | 3.4 | 3.5 | 5.2 | 4.8 | 4.6 | 5.1 | 4.7 | 4.4 | 4.9 | 4.6 | 4.4 | 3.8 | 4 | 4.2 | 90 |
| 95 | 3 | 3.2 | 3.3 | 5.1 | 4.7 | 4.5 | 4.9 | 4.6 | 4.4 | 4.8 | 4.5 | 4.3 | 3.7 | 4 | 4.1 | 95 |
| 100 | 2.8 | 3 | 3.1 | 4.9 | 4.6 | 4.4 | 4.8 | 4.5 | 4.3 | 4.7 | 4.4 | 4.2 | 3.7 | 3.9 | 4 | 100 |
| 105 | 2.7 | 2.8 | 2.9 | 4.8 | 4.5 | 4.3 | 4.7 | 4.4 | 4.2 | 4.6 | 4.3 | 4.1 | 3.6 | 3.9 | 4 | 105 |
| 110 | 2.5 | 2.6 | | 4.6 | 4.3 | 4.2 | 4.6 | 4.3 | 4.1 | 4.5 | 4.2 | 4.1 | 3.6 | 3.8 | 3.9 | 110 |
| 115 | | | | 4.5 | 4.2 | 4.1 | 4.5 | 4.2 | 4.1 | 4.4 | 4.1 | 4 | 3.6 | 3.8 | 3.8 | 115 |
| 120 | | | | 4.4 | 4.1 | 4 | 4.3 | 4.1 | 4 | 4.3 | 4 | 3.9 | 3.6 | 3.8 | 3.8 | 120 |
| 125 | | | | 4.2 | 4 | 3.9 | 4.2 | 4 | 3.9 | 4.2 | 3.9 | 3.9 | 3.6 | 3.7 | 3.7 | 125 |
| 130 | | | | 4.1 | 3.9 | 3.9 | 4.1 | 3.9 | 3.8 | 4.1 | 3.8 | 3.8 | 3.5 | 3.7 | 3.6 | 130 |
| 135 | | | | 3.9 | 3.8 | 3.8 | 4 | 3.8 | 3.8 | 4 | 3.8 | 3.7 | 3.5 | 3.6 | 3.6 | 135 |
| 140 | | | | 3.8 | 3.7 | 3.7 | 3.9 | 3.7 | 3.7 | 3.9 | 3.7 | 3.6 | 3.5 | 3.5 | 3.5 | 140 |
| 145 | | | | 3.6 | 3.6 | 3.6 | 3.7 | 3.6 | 3.6 | 3.8 | 3.6 | 3.6 | 3.4 | 3.4 | 3.4 | 145 |
| 150 | | | | 3.5 | 3.5 | 3.5 | 3.6 | 3.5 | 3.5 | 3.5 | 3.6 | 3.5 | 3.2 | 3.3 | 3.3 | 150 |
| 155 | | | | 3.4 | 3.4 | 3.4 | 3.5 | 3.4 | 3.5 | 3.2 | 3.5 | 3.5 | 2.9 | 3.2 | 3.2 | 155 |
| 160 | | | | 3.3 | 3.3 | 3.3 | 3.4 | 3.3 | 3.4 | 2.8 | 3.4 | 3.4 | 2.6 | 3.1 | 3.1 | 160 |
| 165 | | | | 3.2 | 3.2 | 3.2 | 3.2 | 3.2 | 3.3 | 2.5 | 3.1 | 3.3 | 2.3 | 2.9 | 3.1 | 165 |
| 170 | | | | 3.1 | 3.1 | 3.1 | 2.9 | 3.1 | 3.2 | 2.2 | 2.8 | 3.1 | 2 | 2.5 | 2.9 | 170 |
| 175 | | | | 3 | 3 | 3 | 2.6 | 3 | 3.1 | 1.9 | 2.4 | 2.8 | 1.6 | 2.2 | 2.6 | 175 |
| 180 | | | | 2.7 | 2.9 | 2.9 | 2.3 | 2.7 | 2.9 | 1.6 | 2.1 | 2.4 | 1.3 | 1.9 | 2.2 | 180 |
| 185 | | | | 2.5 | 2.8 | | 2 | 2.4 | 2.6 | 1.3 | 1.8 | 2.1 | | 1.6 | 1.9 | 185 |
| 190 | | | | 2.2 | 2.4 | | 1.7 | 2.1 | 2.2 | | 1.5 | 1.7 | | | 1.6 | 190 |
| 195 | | | | 1.9 | 2.1 | | 1.5 | 1.8 | | | | 1.4 | | | | 195 |
| 200 | | | | 1.7 | 1.8 | | | 1.5 | | | | | | | | 200 |
| 205 | | | | 1.5 | | | | | | | | | | | | 205 |

t_207_52401_00_000 / 52501_00_000 / 52601_00_000

Lifting heights Hauteurs de levage



US2533.03

Lifting capacities Forces de levage

TVNZK



| Crane Model | 36 ft + 23 ft | | | 130 ft + 23 ft | | | 142 ft + 23 ft | | | 154 ft + 23 ft | | | 164 ft + 23 ft | | | Crane Model |
|-------------|---------------|-----|-----|----------------|-----|-----|----------------|-----|-----|----------------|-----|-----|----------------|-----|-----|-------------|
| | 34 ft | | | 34 ft | | | 34 ft | | | 34 ft | | | 34 ft | | | |
| | 0° | 20° | 40° | 0° | 20° | 40° | 0° | 20° | 40° | 0° | 20° | 40° | 0° | 20° | 40° | |
| 12 | 9.2 | | | | | | | | | | | | | | | 12 |
| 13 | 9.2 | | | | | | | | | | | | | | | 13 |
| 14 | 9.2 | | | | | | | | | | | | | | | 14 |
| 15 | 9.2 | | | | | | | | | | | | | | | 15 |
| 16 | 9.2 | | | | | | | | | | | | | | | 16 |
| 17 | 9.2 | | | | | | | | | | | | | | | 17 |
| 18 | 9.2 | | | | | | | | | | | | | | | 18 |
| 19 | 9.2 | 8.7 | | | | | | | | | | | | | | 19 |
| 20 | 9.2 | 8.7 | | | | | | | | | | | | | | 20 |
| 22 | 9.2 | 8.7 | | | | | | | | | | | | | | 22 |
| 24 | 9.1 | 8.7 | | | | | | | | | | | | | | 24 |
| 26 | 8.9 | 8.7 | | | | | | | | | | | | | | 26 |
| 28 | 8.8 | 8.7 | 8.3 | | | | | | | | | | | | | 28 |
| 30 | 8.5 | 8.6 | 8.3 | 9.2 | | | | | | | | | | | | 30 |
| 32 | 8.2 | 8.4 | 8.3 | 9.2 | | | | | | | | | | | | 32 |
| 34 | 7.9 | 8.2 | 8.2 | 9.2 | | | 8.5 | | | | | | | | | 34 |
| 36 | 7.6 | 7.9 | 8.1 | 9.2 | | | 8.5 | | | | | | | | | 36 |
| 38 | 7.3 | 7.6 | 7.9 | 9.2 | | | 8.5 | | | 7.9 | | | | | | 38 |
| 40 | 7 | 7.4 | 7.6 | 9.2 | | | 8.5 | | | 8 | | | 6.9 | | | 40 |
| 45 | 6.4 | 6.7 | 7 | 9.2 | 8.7 | | 8.5 | | | 8 | | | 7 | | | 45 |
| 50 | 5.9 | 6.2 | 6.4 | 9.2 | 8.7 | | 8.5 | 8.3 | | 7.9 | 7.8 | | 7 | | | 50 |
| 55 | 5.5 | 5.7 | 5.9 | 9 | 8.7 | 8.3 | 8.5 | 8.2 | 7.8 | 7.9 | 7.8 | | 7 | 7 | | 55 |
| 60 | 5 | 5.2 | 5.4 | 8.9 | 8.5 | 8.1 | 8.4 | 8.2 | 7.8 | 7.9 | 7.7 | 7.6 | 6.9 | 7 | | 60 |
| 65 | 4.6 | 4.9 | 5 | 8.6 | 8.2 | 7.9 | 8.3 | 8 | 7.7 | 7.8 | 7.6 | 7.4 | 6.9 | 7 | 6.8 | 65 |
| 70 | 4.3 | 4.5 | 4.6 | 8.2 | 7.9 | 7.6 | 8.2 | 7.8 | 7.5 | 7.7 | 7.5 | 7.3 | 6.8 | 6.8 | 6.7 | 70 |
| 75 | 3.9 | 4.1 | 4.2 | 7.8 | 7.5 | 7.4 | 7.8 | 7.5 | 7.3 | 7.6 | 7.3 | 7.1 | 6.7 | 6.7 | 6.6 | 75 |
| 80 | 3.7 | 3.8 | 3.8 | 7.5 | 7.2 | 7.1 | 7.5 | 7.2 | 7 | 7.4 | 7.1 | 6.9 | 6.6 | 6.5 | 6.4 | 80 |
| 85 | 3.4 | 3.5 | | 7.1 | 6.9 | 6.8 | 7.2 | 6.9 | 6.8 | 7.1 | 6.8 | 6.7 | 6.4 | 6.3 | 6.1 | 85 |
| 90 | | | | 6.8 | 6.6 | 6.5 | 6.9 | 6.7 | 6.5 | 6.8 | 6.6 | 6.5 | 6.2 | 6 | 5.9 | 90 |
| 95 | | | | 6.5 | 6.4 | 6.3 | 6.6 | 6.4 | 6.3 | 6.6 | 6.3 | 6.2 | 6 | 5.8 | 5.8 | 95 |
| 100 | | | | 6.3 | 6.1 | 6 | 6.3 | 6.1 | 6.1 | 6.3 | 6.1 | 6 | 5.8 | 5.6 | 5.6 | 100 |
| 105 | | | | 6 | 5.9 | 5.8 | 6.1 | 5.9 | 5.9 | 6.1 | 5.9 | 5.8 | 5.6 | 5.5 | 5.4 | 105 |
| 110 | | | | 5.8 | 5.6 | 5.6 | 5.9 | 5.7 | 5.7 | 5.9 | 5.7 | 5.7 | 5.4 | 5.3 | 5.2 | 110 |
| 115 | | | | 5.5 | 5.4 | 5.4 | 5.7 | 5.5 | 5.5 | 5.7 | 5.5 | 5.5 | 5.2 | 5.1 | 5.1 | 115 |
| 120 | | | | 5.3 | 5.2 | 5.2 | 5.5 | 5.3 | 5.3 | 5.5 | 5.4 | 5.3 | 5 | 5 | 4.9 | 120 |
| 125 | | | | 5.1 | 5 | 5 | 5.2 | 5.2 | 5.1 | 5.3 | 5.2 | 5.2 | 4.8 | 4.8 | 4.8 | 125 |
| 130 | | | | 4.9 | 4.9 | 4.9 | 5.1 | 5 | 5 | 4.9 | 5 | 5 | 4.6 | 4.6 | 4.7 | 130 |
| 135 | | | | 4.7 | 4.7 | 4.7 | 4.9 | 4.8 | 4.8 | 4.4 | 4.8 | 4.9 | 4.2 | 4.5 | 4.5 | 135 |
| 140 | | | | 4.5 | 4.5 | 4.6 | 4.6 | 4.7 | 4.7 | 3.9 | 4.3 | 4.6 | 3.7 | 4.1 | 4.3 | 140 |
| 145 | | | | 4.3 | 4.4 | 4.4 | 4.2 | 4.4 | 4.5 | 3.5 | 3.9 | 4.1 | 3.3 | 3.7 | 4 | 145 |
| 150 | | | | 4.2 | 4.2 | 4.2 | 3.9 | 4.1 | 4.2 | 3.1 | 3.4 | 3.7 | 2.9 | 3.2 | 3.5 | 150 |
| 155 | | | | 3.9 | 4 | | 3.4 | 3.7 | 3.9 | 2.7 | 3 | 3.2 | 2.5 | 2.8 | 3 | 155 |
| 160 | | | | 3.5 | 3.7 | | 3 | 3.3 | 3.4 | 2.3 | 2.6 | 2.8 | 2.1 | 2.4 | 2.6 | 160 |
| 165 | | | | 3.1 | 3.3 | | 2.6 | 2.9 | | 2 | 2.3 | 2.4 | 1.8 | 2.1 | 2.3 | 165 |
| 170 | | | | 2.7 | 2.9 | | 2.3 | 2.5 | | 1.6 | 1.9 | 2 | 1.4 | 1.7 | 1.9 | 170 |
| 175 | | | | 2.4 | 2.5 | | 1.9 | 2.1 | | | | | | 1.4 | 1.5 | 175 |
| 180 | | | | 2.1 | | | 1.6 | 1.8 | | | | | | | | 180 |
| 185 | | | | | | | 1.3 | 1.4 | | | | | | | | 185 |

t_207_52701_00_000

Lifting capacities Forces de levage

TVNZK

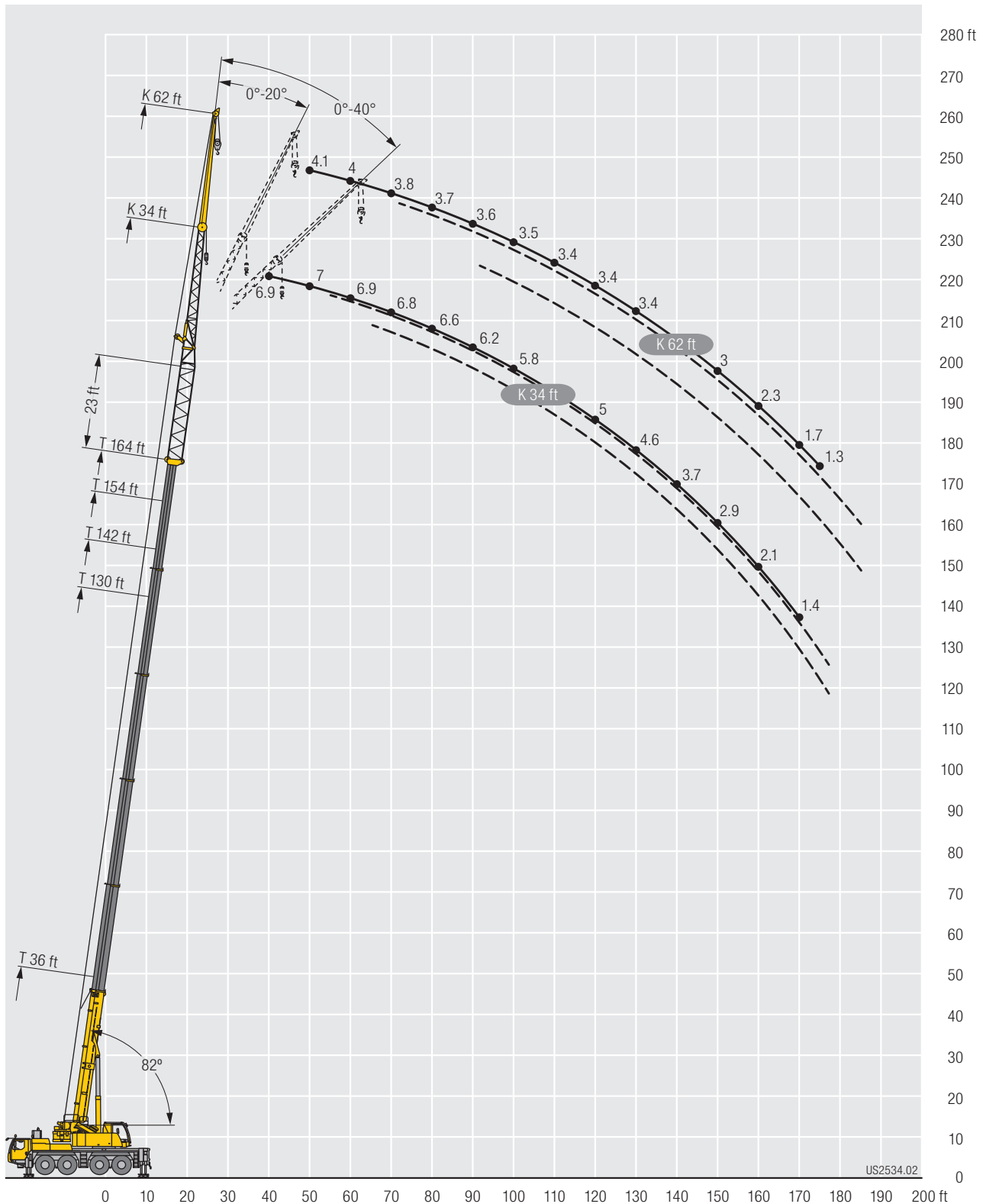


| Crane Model | 36 ft + 23 ft | | | 130 ft + 23 ft | | | 142 ft + 23 ft | | | 154 ft + 23 ft | | | 164 ft + 23 ft | | | Crane Model |
|-------------|---------------|-----|-----|----------------|-----|-----|----------------|-----|-----|----------------|-----|-----|----------------|-----|-----|-------------|
| | 62 ft | | | 62 ft | | | 62 ft | | | 62 ft | | | 62 ft | | | |
| | 0° | 20° | 40° | 0° | 20° | 40° | 0° | 20° | 40° | 0° | 20° | 40° | 0° | 20° | 40° | |
| 15 | 5.8 | | | | | | | | | | | | | | | 15 |
| 16 | 5.8 | | | | | | | | | | | | | | | 16 |
| 17 | 5.8 | | | | | | | | | | | | | | | 17 |
| 18 | 5.8 | | | | | | | | | | | | | | | 18 |
| 19 | 5.8 | | | | | | | | | | | | | | | 19 |
| 20 | 5.8 | | | | | | | | | | | | | | | 20 |
| 22 | 5.8 | | | | | | | | | | | | | | | 22 |
| 24 | 5.8 | | | | | | | | | | | | | | | 24 |
| 26 | 5.8 | | | | | | | | | | | | | | | 26 |
| 28 | 5.8 | | | | | | | | | | | | | | | 28 |
| 30 | 5.8 | | | | | | | | | | | | | | | 30 |
| 32 | 5.8 | | | | | | | | | | | | | | | 32 |
| 34 | 5.7 | | | | | | | | | | | | | | | 34 |
| 36 | 5.7 | 5.3 | | | | | | | | | | | | | | 36 |
| 38 | 5.6 | 5.3 | | 5.8 | | | 5.3 | | | | | | | | | 38 |
| 40 | 5.5 | 5.3 | | 5.8 | | | 5.3 | | | | | | | | | 40 |
| 45 | 5.3 | 5.3 | | 5.8 | | | 5.3 | | | 5.1 | | | | | | 45 |
| 50 | 5 | 5 | 4.6 | 5.8 | | | 5.3 | | | 5.1 | | | 4.1 | | | 50 |
| 55 | 4.7 | 4.8 | 4.6 | 5.8 | | | 5.3 | | | 5.1 | | | 4 | | | 55 |
| 60 | 4.5 | 4.5 | 4.6 | 5.8 | 5.3 | | 5.3 | | | 5.1 | | | 4 | | | 60 |
| 65 | 4.2 | 4.3 | 4.4 | 5.7 | 5.3 | | 5.3 | 5.1 | | 5.1 | | | 3.9 | | | 65 |
| 70 | 4 | 4.1 | 4.2 | 5.7 | 5.3 | | 5.3 | 5.1 | | 5 | 4.9 | | 3.8 | 3.9 | | 70 |
| 75 | 3.7 | 3.9 | 4 | 5.6 | 5.2 | | 5.3 | 5 | | 5 | 4.8 | | 3.8 | 3.9 | | 75 |
| 80 | 3.5 | 3.7 | 3.8 | 5.4 | 5 | 4.6 | 5.2 | 4.9 | 4.4 | 4.9 | 4.7 | | 3.7 | 3.9 | | 80 |
| 85 | 3.2 | 3.5 | 3.7 | 5.3 | 4.9 | 4.6 | 5.1 | 4.8 | 4.4 | 4.9 | 4.6 | 4.4 | 3.7 | 3.9 | | 85 |
| 90 | 3 | 3.2 | 3.4 | 5.1 | 4.7 | 4.5 | 5 | 4.6 | 4.4 | 4.8 | 4.5 | 4.3 | 3.6 | 3.9 | 3.9 | 90 |
| 95 | 2.9 | 3 | 3.2 | 4.9 | 4.6 | 4.4 | 4.9 | 4.5 | 4.3 | 4.7 | 4.4 | 4.2 | 3.6 | 3.8 | 3.9 | 95 |
| 100 | 2.7 | 2.8 | 3 | 4.8 | 4.5 | 4.3 | 4.7 | 4.4 | 4.2 | 4.6 | 4.3 | 4.2 | 3.5 | 3.8 | 3.9 | 100 |
| 105 | 2.5 | 2.7 | 2.8 | 4.7 | 4.4 | 4.2 | 4.6 | 4.3 | 4.1 | 4.5 | 4.2 | 4.1 | 3.5 | 3.7 | 3.8 | 105 |
| 110 | 2.4 | 2.5 | | 4.5 | 4.2 | 4.1 | 4.5 | 4.2 | 4.1 | 4.4 | 4.1 | 4 | 3.4 | 3.7 | 3.8 | 110 |
| 115 | | | | 4.4 | 4.1 | 4 | 4.4 | 4.1 | 4 | 4.3 | 4 | 3.9 | 3.4 | 3.7 | 3.8 | 115 |
| 120 | | | | 4.2 | 4 | 3.9 | 4.2 | 4 | 3.9 | 4.2 | 3.9 | 3.8 | 3.4 | 3.6 | 3.7 | 120 |
| 125 | | | | 4.1 | 3.9 | 3.9 | 4.1 | 3.9 | 3.8 | 4.1 | 3.8 | 3.8 | 3.4 | 3.6 | 3.6 | 125 |
| 130 | | | | 3.9 | 3.8 | 3.8 | 4 | 3.8 | 3.7 | 4 | 3.7 | 3.7 | 3.4 | 3.5 | 3.6 | 130 |
| 135 | | | | 3.8 | 3.7 | 3.7 | 3.9 | 3.7 | 3.7 | 3.9 | 3.7 | 3.6 | 3.4 | 3.4 | 3.5 | 135 |
| 140 | | | | 3.7 | 3.6 | 3.6 | 3.7 | 3.6 | 3.6 | 3.7 | 3.6 | 3.6 | 3.4 | 3.4 | 3.4 | 140 |
| 145 | | | | 3.5 | 3.5 | 3.5 | 3.6 | 3.5 | 3.5 | 3.6 | 3.5 | 3.5 | 3.3 | 3.3 | 3.3 | 145 |
| 150 | | | | 3.4 | 3.3 | 3.4 | 3.5 | 3.4 | 3.4 | 3.3 | 3.4 | 3.5 | 3 | 3.2 | 3.2 | 150 |
| 155 | | | | 3.3 | 3.2 | 3.3 | 3.4 | 3.3 | 3.3 | 2.9 | 3.3 | 3.4 | 2.7 | 3.1 | 3.1 | 155 |
| 160 | | | | 3.1 | 3.1 | 3.1 | 3.2 | 3.2 | 3.2 | 2.6 | 3.2 | 3.3 | 2.3 | 3 | 3 | 160 |
| 165 | | | | 3 | 3 | 3.1 | 2.9 | 3.1 | 3.1 | 2.2 | 2.8 | 3.1 | 2 | 2.6 | 2.9 | 165 |
| 170 | | | | 2.9 | 2.9 | 3 | 2.7 | 3 | 3.1 | 1.9 | 2.5 | 2.9 | 1.7 | 2.3 | 2.7 | 170 |
| 175 | | | | 2.8 | 2.8 | 2.9 | 2.3 | 2.7 | 2.9 | 1.6 | 2.2 | 2.5 | 1.3 | 2 | 2.3 | 175 |
| 180 | | | | 2.5 | 2.7 | 2.8 | 2 | 2.5 | 2.7 | | 1.8 | 2.1 | | 1.6 | 2 | 180 |
| 185 | | | | 2.2 | 2.5 | | 1.7 | 2.1 | 2.4 | | 1.5 | 1.8 | | | 1.7 | 185 |
| 190 | | | | 1.9 | 2.2 | | 1.5 | 1.8 | 2 | | | 1.5 | | | | 190 |
| 195 | | | | 1.7 | 1.9 | | | 1.5 | | | | | | | | 195 |
| 200 | | | | 1.4 | 1.6 | | | | | | | | | | | 200 |

L_207_52801_00_000

Lifting heights Hauteurs de levage

TVNZK



Lifting capacities Forces de levage

TK

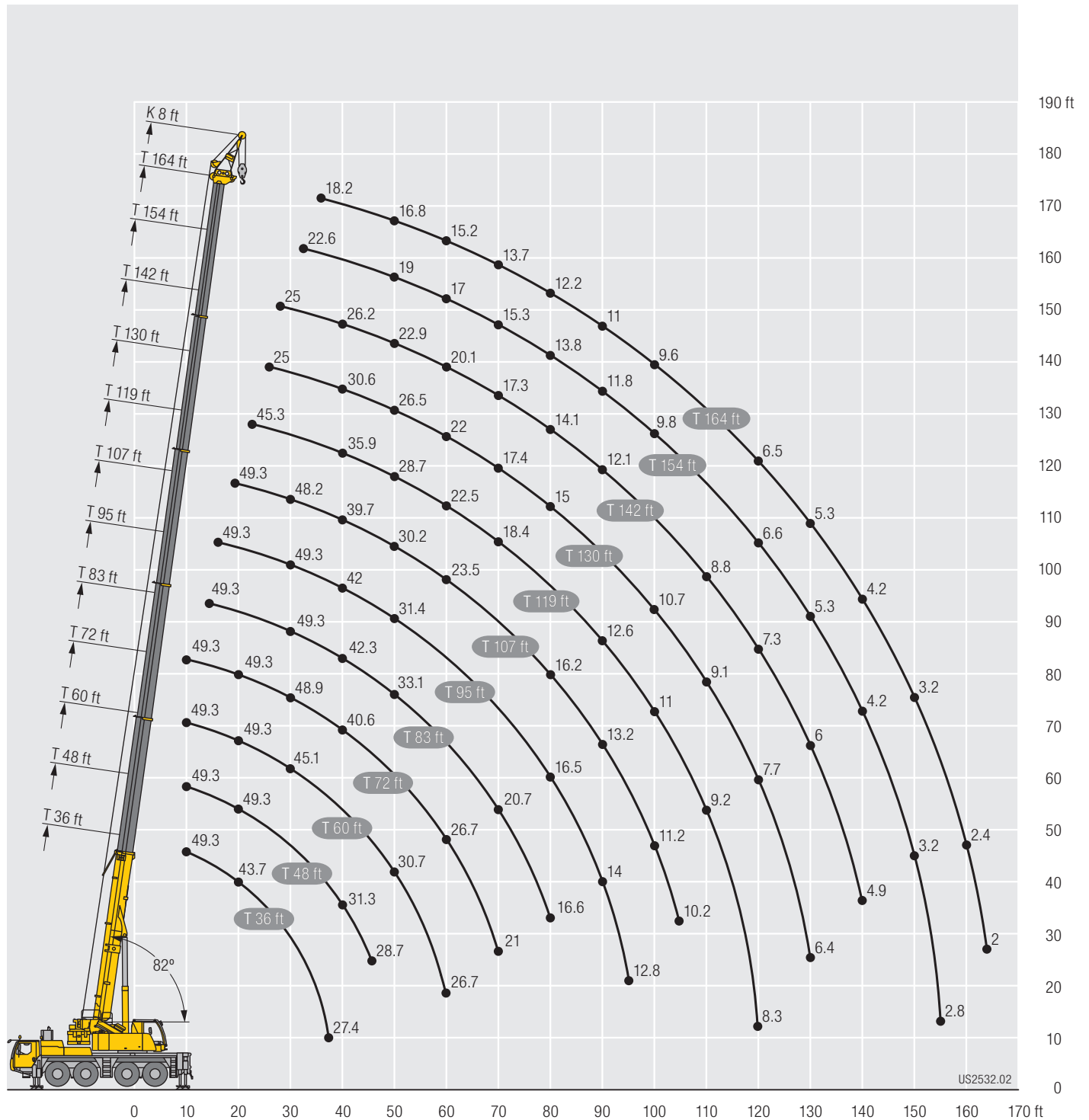


| | 36 ft | 48 ft | 60 ft | 72 ft | 83 ft | 95 ft | 107 ft | 119 ft | 130 ft | 142 ft | 154 ft | 164 ft | |
|-----|-------|-------|-------|-------|-------|-------|--------|--------|--------|--------|--------|--------|-----|
| | 8 ft | | | | | | | | | | | | |
| 10 | 49.3 | 49.3 | 49.3 | 49.3 | | | | | | | | | 10 |
| 11 | 49.3 | 49.3 | 49.3 | 49.3 | | | | | | | | | 11 |
| 12 | 49.3 | 49.3 | 49.3 | 49.3 | | | | | | | | | 12 |
| 13 | 49.3 | 49.3 | 49.3 | 49.3 | | | | | | | | | 13 |
| 14 | 49.3 | 49.3 | 49.3 | 49.3 | 49.3 | | | | | | | | 14 |
| 15 | 49.3 | 49.3 | 49.3 | 49.3 | 49.3 | | | | | | | | 15 |
| 16 | 49.3 | 49.3 | 49.3 | 49.3 | 49.3 | 49.3 | | | | | | | 16 |
| 17 | 48.5 | 49.3 | 49.3 | 49.3 | 49.3 | 49.3 | | | | | | | 17 |
| 18 | 47 | 49.3 | 49.3 | 49.3 | 49.3 | 49.3 | | | | | | | 18 |
| 19 | 45.4 | 49.3 | 49.3 | 49.3 | 49.3 | 49.3 | 49.3 | | | | | | 19 |
| 20 | 43.7 | 49.3 | 49.3 | 49.3 | 49.3 | 49.3 | 49.3 | | | | | | 20 |
| 22 | 40.6 | 48.7 | 49.3 | 49.3 | 49.3 | 49.3 | 49.3 | 45.3 | | | | | 22 |
| 24 | 38.1 | 46.2 | 49.3 | 49.3 | 49.3 | 49.3 | 49.3 | 45.1 | 25 | | | | 24 |
| 26 | 35.7 | 43.6 | 49.1 | 49.3 | 49.3 | 49.3 | 49.3 | 44.7 | 36 | | | | 26 |
| 28 | 33.8 | 41 | 47.3 | 49.3 | 49.3 | 49.3 | 49.3 | 43.8 | 35.7 | 25 | | | 28 |
| 30 | 32 | 39 | 45.1 | 48.9 | 49.3 | 49.3 | 48.2 | 42.7 | 35.2 | 28.9 | | | 30 |
| 32 | 30.5 | 37.1 | 43.1 | 47.7 | 49.2 | 49.3 | 46.5 | 41.4 | 34.4 | 28.4 | 22.6 | | 32 |
| 34 | 29.1 | 35.4 | 41 | 45.5 | 48.7 | 48.3 | 44.8 | 40.1 | 33.5 | 27.9 | 22.2 | 18.2 | 34 |
| 36 | 28 | 33.9 | 39.3 | 43.8 | 47.1 | 46.8 | 43.1 | 38.7 | 32.6 | 27.4 | 21.9 | 18.2 | 36 |
| 38 | 27.4 | 32.5 | 37.8 | 42.2 | 44.9 | 44.5 | 41.4 | 37.3 | 31.6 | 26.8 | 21.5 | 18.2 | 38 |
| 40 | | 31.3 | 36.3 | 40.6 | 42.3 | 42 | 39.7 | 35.9 | 30.6 | 26.2 | 21.1 | 18.1 | 40 |
| 45 | | 28.7 | 33.2 | 36.9 | 37.9 | 36 | 34.1 | 32.8 | 28.4 | 24.5 | 20.1 | 17.6 | 45 |
| 50 | | | 30.7 | 33.1 | 33.1 | 31.4 | 30.2 | 28.7 | 26.5 | 22.9 | 19 | 16.8 | 50 |
| 55 | | | 28.6 | 30.5 | 29.1 | 27.5 | 26.6 | 25.1 | 24.5 | 21.4 | 18 | 16 | 55 |
| 60 | | | 26.7 | 26.7 | 26 | 24.6 | 23.5 | 22.5 | 22 | 20.1 | 17 | 15.2 | 60 |
| 65 | | | | 23.6 | 23.2 | 22 | 21 | 20.6 | 19.5 | 18.8 | 16.1 | 14.4 | 65 |
| 70 | | | | 21 | 20.7 | 19.7 | 19.4 | 18.4 | 17.4 | 17.3 | 15.3 | 13.7 | 70 |
| 75 | | | | | 18.5 | 18 | 17.8 | 16.6 | 16.2 | 15.6 | 14.5 | 12.9 | 75 |
| 80 | | | | | 16.6 | 16.5 | 16.2 | 15 | 15 | 14.1 | 13.8 | 12.2 | 80 |
| 85 | | | | | | 15.2 | 14.6 | 13.6 | 13.7 | 12.8 | 12.9 | 11.6 | 85 |
| 90 | | | | | | 14 | 13.2 | 12.6 | 12.4 | 12.1 | 11.8 | 11 | 90 |
| 95 | | | | | | 12.8 | 12.2 | 11.9 | 11.3 | 11.4 | 10.7 | 10.4 | 95 |
| 100 | | | | | | | 11.2 | 11 | 10.7 | 10.6 | 9.8 | 9.6 | 100 |
| 105 | | | | | | | 10.2 | 9.9 | 9.9 | 9.6 | 8.9 | 8.7 | 105 |
| 110 | | | | | | | | 9.2 | 9.1 | 8.8 | 8.1 | 7.9 | 110 |
| 115 | | | | | | | | 8.8 | 8.4 | 8 | 7.3 | 7.2 | 115 |
| 120 | | | | | | | | 8.3 | 7.7 | 7.3 | 6.6 | 6.5 | 120 |
| 125 | | | | | | | | | 7 | 6.6 | 6 | 5.9 | 125 |
| 130 | | | | | | | | | 6.4 | 6 | 5.3 | 5.3 | 130 |
| 135 | | | | | | | | | | 5.4 | 4.7 | 4.7 | 135 |
| 140 | | | | | | | | | | 4.9 | 4.2 | 4.2 | 140 |
| 145 | | | | | | | | | | | 3.7 | 3.7 | 145 |
| 150 | | | | | | | | | | | 3.2 | 3.2 | 150 |
| 155 | | | | | | | | | | | 2.8 | 2.8 | 155 |
| 160 | | | | | | | | | | | | 2.4 | 160 |
| 165 | | | | | | | | | | | | 2 | 165 |

t_207_51901_00_000

Lifting heights Hauteurs de levage

TK



US2532.02

Equipment Equipment

Crane carrier

| | |
|--------------------------|---|
| Frame | Liebherr designed and manufactured, box-type, torsion resistant design of hightensile fine grained structural steel. |
| Outriggers | 4-point supporting system, hydraulically telescopic into horizontal and vertical direction. Operation with remote control, automatic support leveling, electronic inclination display. |
| Engine | 6-cylinder Diesel, make Liebherr, watercooled, output 350 kW (476 h.p.), max. torque 1826 lbs-ft. Exhaust emissions acc. to 97/68/EG, EPA/CARB, ECE-R.96. Fuel reservoir: 106 gallons. |
| Transmission | ZF 12-speed gear box with automatic control system. ZF-intarder fitted directly to the gear. Two-stage transfer case with lockable transfer differential. |
| Axles | Low maintenance carrier axles, all 4 axles steered. Axle 2, 3 and 4 are equipped with planetary gears, all driven axles with transverse differential locks, axle 3 with longitudinal differential lock. |
| Suspension | All axles are mounted on hydropneumatic suspension and are lockable hydraulically. |
| Tyres | 8 tyres, size: 445/95 R 25 (16.00 R 25). |
| Steering | 2-circuit system with hydraulic servo steering. Active speed depending rear axle steering, special steering programs for various driving situations. |
| Brakes | Service brake: all-wheel servo-air brake, all axles are equipped with disc brakes, dual circuit. Additional brakes: exhaust flap brake, Telma Eddy current brake (optional), intarder in gearbox. Hand brake: Spring brake actuator, acting on the wheels of the 1st, 2nd and 4th axle. |
| Driver's cab | Spacious corrosion resistant with comfort furnishings, mounted on rubber shock absorbers, safety glazing. |
| Electrical system | Modern data bus technique, 24 Volt DC, 2 batteries of 170 Ah each. |

Crane superstructure

| | |
|--------------------------|---|
| Frame | Liebherr-manufactured, torsionally rigid steel construction made from high-tensile fine-grain steel. Triple-roller slewing rim. |
| Crane engine | 4-cylinder Diesel, make Liebherr, watercooled, output 129 kW (175 h.p.), max. torque 908 lbs-ft. Exhaust emissions acc. to 97/68/EG, EPA/CARB, ECE-R.96. Fuel reservoir: 70 gallons. |
| Crane drive | Diesel-hydraulic, with 2 axial piston variable displacement pumps, with servo-control and capacity control, 1 double gear pump, open controlled oil circuits. Compact hydraulic drive flanged to the Diesel engine. Drive assembly completely enclosed for noise abatement. |
| Control | Electric "Load Sensing" control, simultaneous operation of 4 working motions, 2 self-centering hand control levers (joy-stick type). |
| Hoist gear | Axial piston fixed displacement motor, Liebherr hoist drum with integrated planetary gear and spring-loaded static brake. Hoist gear is driven through a controlled open oil circuit. |
| Luffing gear | 1 differential ram with safety check valves. |
| Slewing gear | Axial piston fixed displacement motor, planetary gear, spring-loaded static brake. Slewing gear invertible from released to locked as a standard feature. |
| Crane cab | Large screen area, compound glass, comfort furnishing, cabin tiltable 20° to rear. |
| Safety devices | LICCON2 safe load indicator, test system hoist limit switch, safety valves to prevent pipe and hose ruptures. |
| Telescopic boom | 1 base section and 5 telescopic sections. All telescopic sections extendable individually by means of the rapid-cycle telescoping system TELEMATIK. Boom length 36 ft to 164 ft. |
| Counterweight | 14800 lbs |
| Electrical system | Modern data bus technique, 24 Volt DC, 2 batteries of 170 Ah each. |

Operating modes

| | |
|------------|--|
| K | Special swing-away jib 8 ft Double swing-away jib 34 ft – 62 ft Adjustment 0°, 20°, 40° |
| NZK | Hydraulically adjustable swing-away jib 34 ft – 62 ft Hydraulically adjustment 0° – 40° (option). |
| V | Telescopic boom extension 23 ft |

Additional equipment

| | |
|----------------------------------|--|
| 2nd hoist gear | For two-hook operation or for operation with swing-away jib if the hoist rope shall remain reeved. |
| Additional counterweight | 31500 lbs for a total counterweight of 46300 lbs. |
| Tyres | 8 tyres, size 525/80 R 25 (20.5 R 25). |
| Drive 8 x 8 | Additional drive of the 1st axle. |

Other items of equipment available on request.

Equipment Équipement

Châssis porteur

| | |
|--------------------------------|---|
| Cadre | Fabrication Liebherr, construction en caisson indéformable, en acier à haute résistance à grains fins. |
| Calage | Dispositif de calage horizontal et vertical en 4 points, entièrement déployable hydrauliquement. Utilisation avec commande à distance, mise à niveau automatique du calage, inclinomètre électronique. |
| Moteur | Moteur diesel, 6 cylindres, fabriqué par Liebherr, à refroidissement par eau, de 350 kW (476 ch), couple max. 1826 lbs-ft. Emissions des gaz d'échappement conformes aux directives 97/68/EG, EPA/CARB, ECE-R.96. Capacité du réservoir à carburant: 106 gallons. |
| Boîte de vitesse | Boîte de vitesses ZF à 12 rapports, mécanisme automatisé à commande. Ralentisseur hydrodynamique ZF directement accouplé à la boîte. Boîte de transfert à 2 étages avec blocage de différentiel. |
| Essieux | Essieux nécessitant peu d'entretien, les 4 essieux sont directeurs. Les essieux 2, 3 et 4 sont des essieux planétaires, tous les essieux moteurs avec différentiel transversal et l'essieu 3 avec différentiel longitudinal. |
| Suspension | Suspension hydropneumatique sur tous les essieux. Chaque essieu peut être bloqué hydrauliquement. |
| Pneumatiques | 8 pneus de taille: 445/95 R 25 (16.00 R 25). |
| Direction | 2 circuits avec direction assistée hydraulique. Direction active des essieux arrière et dépendante de la vitesse, programmes de direction spéciaux pour les différents modes de déplacement. |
| Freins | Freins de service : servofrein à air comprimé, tous les essieux sont munis de freins à disque, a 2 circuits. Freins auxiliaire : par clapet sur échappement, frein Telma (option), ralentisseur monte sur boîte de vitesse. Frein de secours et frein à main : ressort accumulé agissant sur les roues des essieux 1, 2 et 4. |
| Cabine | Spacieuse cabine, traitement anticorrosion, équipement «grand confort», suspension par silentbloks, vitrage de sécurité. |
| Installation électrique | Technique moderne de transmission de données par BUS de données, courant continu 24 Volts, 2 batteries de 170 Ah chacune. |

Partie tournante

| | |
|---------------------|---|
| Cadre | Fabrication Liebherr, construction soudée indéformable, en acier à grain fin haute résistance. Couronne d'orientation à triple rangée de rouleaux. |
| Moteur | Moteur diesel Liebherr, 4 cylindres, à refroidissement par eau, de 129 kW (175 ch), couple max. 908 lbs-ft. Emissions des gaz d'échappement conformes aux directives 97/68/EG, EPA/CARB, ECE-R.96. Capacité du réservoir à carburant: 70 gallons. |
| Entraînement | Diesel hydraulique avec 2 pompes à débit variable à piston axiaux, servocommande et régulation de la puissance, 1 double pompe à engrenages, circuits hydrauliques ouverts et régulés. Entraînement hydraulique compact, accouplé directement au moteur Diesel, mécanisme d'entraînement total fermé pour une bonne insonorisation. |
| Commande | Direction électrique «Load Sensing», 4 mouvements de travail dirigeable simultanément, deux leviers de commande à 4 positions et à autocentrage. |

| | |
|--------------------------------|--|
| Mécanisme de levage | Moteur à cylindrée constante et à pistons axiaux. Treuil de marque Liebherr équipé d'un engrenage planétaire et d'un frein d'arrêt commandé par ressort. L'entraînement du treuil de levage s'effectue en circuit régulé et fermé. |
| Mécanisme de relevage | 1 vérin différentiel avec soupapes de retenu. |
| Dispositif de rotation | Moteur à cylindrée constante à pistons axiaux, engrenage planétaire, frein d'arrêt commandé par ressort. Orientation de série commutable en circuit hydraulique ouvert ou fermé (freinage automatique ou au pied). |
| Cabine de grue | Construction en tôle d'acier entièrement zinguée avec peinture par poudrage et cuisson au four, avec glaces de sécurité, appareils de commande et de contrôle, équipement confortable. Cabine inclinable vers l'arrière. |
| Dispositif de sécurité | Contrôleur de charge «LICCON2», système test limitation de la course pour le levage, soupape de sûreté contre la rupture de tubes et de tuyaux. |
| Flèche télescopique | Un élément de base et de 5 télescopes. Chaque partie peut être télescopée individuellement à l'aide du système de télescopage séquentiel rapide TELEMATIK. Longueur de flèche: 36 ft – 164 ft. |
| Contrepoids | 14800 lbs |
| Installation électrique | Technique moderne de transmission de données par BUS de données. Courant continu 24 Volts, 2 batteries de 170 Ah chacune. |

Modes de fonctionnement

| | |
|------------|--|
| K | Fléchette pliante spéciale 8 ft Double fléchette pliante 34 ft – 62 ft Positionnement à 0°, 20°, 40° |
| NZK | Fléchette pliante à positionnement hydraulique 34 ft – 62 ft Positionnement hydraulique à 0° – 40° (en option). |
| V | Rallonge flèche télescopique 23 ft |

Équipement supplémentaire

| | |
|---------------------------------|---|
| 2ème mécanisme de levage | Pour l'utilisation du deuxième crochet, ou bien pour une utilisation avec fléchette pliante lorsque le câble de levage principal rest mouflé. |
| Contrepoids additionnel | 31500 lbs pour un contrepoids total de 46300 lbs. |
| Pneumatiques | 8 pneus. Taille: 525/80 R 25 (20.5 R 25). |
| Entraînement 8 x 8 | Essieu 1 est entraîné additionnellement. |

Autres équipements supplémentaires sur demande.

Description of symbols Explication des symboles

General symbols/Symboles généraux



Outriggers
Calage



Outriggers – free on tyres
Calage – libre sur pneus



Axle
Essieu



Radius
Portée



Boom length
Longueur de la flèche



Boom position
Position de la flèche



Counterweight
Contrepoids



Tyres
Pneumatiques



Slewing gear / Working area
Mécanisme d'orientation / Plage de travail

85%

Standard
Norme



Driving speed
Vitesse de translation



Driving speed – Onroad gear
Vitesse de translation – Vitesse de route



Driving speed – Crawl speed
Vitesse de translation – Marche lente



Transmission
Boîte de vitesse



Gear
Vitesse



Hookblock / Capacity
Moufle à crochet / Capacité de charge



Hoist gear
Treuil de levage



Crane carrier
Châssis porteur



Crane superstructure
Partie tournante de la grue



Gradability
Aptitude à gravir les pentes

Crane specific symbols/Symboles spécifiques à la grue



Telescopic boom
Flèche télescopique



Telescopic boom extension
Rallonge flèche télescopique



Swing away jib
Fléchette pliante



Erection jib
Fléchette de montage



Hydraulic swing away jib
Fléchette pliante hydraulique

Remarks referring to load charts

1. The lifting capacities do not exceed 85 % of the tipping load according to ASME B 30.5. The crane's structural steelwork is in accordance with EN 13000 and ASME B 30.5.
2. For the calculation of the load charts at least a wind speed of 30 ft/s (9 m/s, 20 mph) and regarding the load a sail area of 1 m² per ton load and a wind resistance coefficient of 1.2 on the load have been taken into account. For lifting of loads with large sail areas and/or high wind resistance coefficients the maximum wind speed as stated in the load charts has to be reduced.
3. Lifting capacities are given in kips.
4. The weight of the hook blocks and hooks must be deducted from the lifting capacities.
5. Working radii are measured from the slewing centre.
6. The lifting capacities given for the telescopic boom only apply if the folding jib is taken off.
7. Lifting capacities above 139000 lbs/176300 lbs only with additional pulley block/special equipment.
8. The data of this brochure serves only for general information. All information is provided without warranty. Instructions for the correct commissioning of the crane please take from the operation manual and the load chart book.

Remarques relatives aux tableaux des charges

1. La capacité de charge ne doit pas dépasser 85 % de la charge de basculement conformément à ASME B 30.5. La structure métallique de la grue est conforme à EN 13000 et ASME B 30.5.
2. Une vitesse de vent de 30 ft/s (9 m/s, 20 mph) minimum, une surface de prise au vent de 1 m² par tonne ainsi qu'un coefficient de résistance au vent de la charge 1,2 sont pris en compte pour le calcul des tableaux de charge. Lorsque des charges ayant une surface de prise au vent et/ou un coefficient de résistance au vent plus élevé(e)s sont levées, la vitesse de vent maximale indiquée dans les tableaux de charge doit être réduite.
3. Les forces de levage sont données en kips.
4. Les poids des moufles et crochets doit être soustrait des charges indiquées.
5. Les portées sont calculées à partir de l'axe de rotation.
6. Les forces indiquées pour la flèche télescopique s'entendent fléchette déployable déposée.
7. Forces de levage plus de 139000 lbs/176300 lbs seulement avec moufle additionnel/équipement supplémentaire.
8. Les données de cette brochure sont données à titre informatif. Ces renseignements sont sans garantie. Les consignes relatives à la bonne mise en service de la grue sont disponibles dans le manuel d'utilisation et le manuel de tableaux de charge.

Subject to modification / Sous réserve de modifications

Printed in Germany (1)

td-207-00-us10-2016

Liebherr-Werk Ehingen GmbH

Postfach 1361, 89582 Ehingen, Germany

☎ +49 73 91 5 02-0, Fax +49 73 91 5 02-33 99

www.liebherr.com, E-mail: info.lwe@liebherr.com

www.facebook.com/LiebherrConstruction

Courtesy of Crane.Market