





Mobile Crane/Grue mobile

LTM 1100-4.2



	120 USt
	197 ft
	190 ft
	299 ft

LIEBHERR

Courtesy of Crane.Market

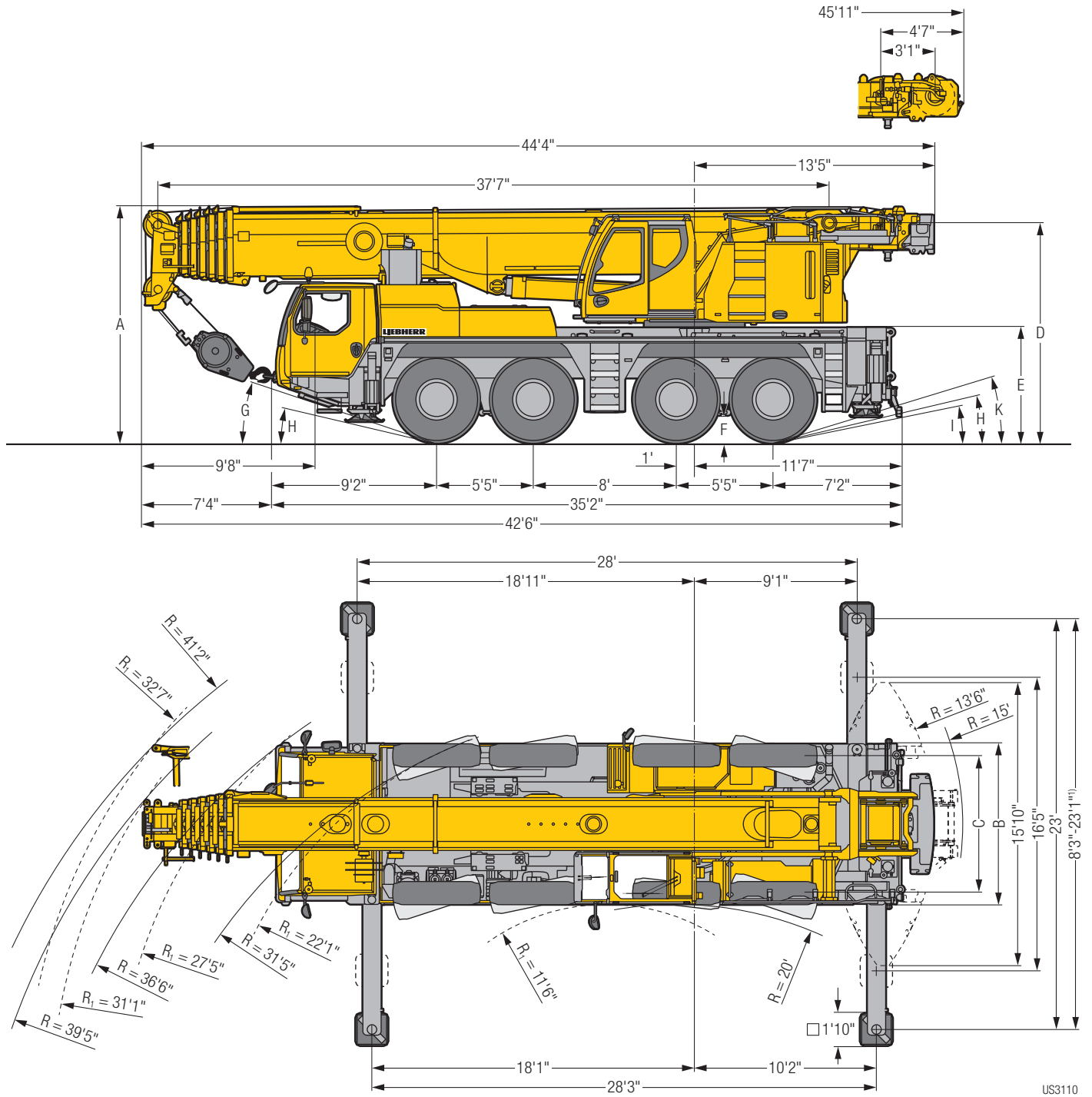
Table of content

Tables des matières

Technical Data/Caractéristiques technique

Dimensions/Encombrement	3
Mobile Crane/Grue mobile	4 – 5
Weights/Poids Working speeds/Vitesses	6
Counterweight/Contrepoids	7
Boom/jib combinations/Configurations de flèche	8
Hydraulic swing away jib/Fléchette pliante hydraulique	9
T	10 – 15
TK/TNZK	16 – 20
TVK/TVNZK	21 – 26
TK	27 – 28
Equipment/Equipement	29 – 30
Description of symbols/Explication des symboles	31


Dimensions Encombrement



US3110

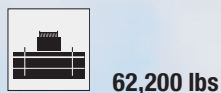
R₁ = All-wheel steering · Direction toutes roues ¹⁾ only with VarioBase® · seulement avec VarioBase®

Dimensions/Encombrement

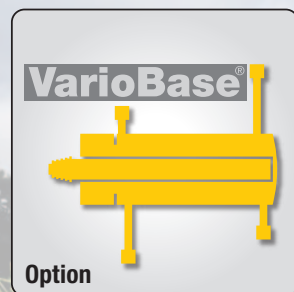
	A	A 4" *	B	C	D	E	F	G	H	I	K
445/95 R 25 (16.00 R 25)	13'1"	12'10"	9'	7'7"	12'2"	6'4"	1'5"	18°	13°	11°	17°
525/80 R 25 (20.5 R 25)	13'1"	12'10"	9'6"	7'9"	12'2"	6'4"	1'5"	18°	13°	11°	17°

* lowered · abaissé

Mobile Crane/Grue mobile LTM 1100-4.2



€COmode





Weights Poids



Hook block/Moufles à crochet

Load lbs Forces de levage lbs	No. of sheaves Poulies	No. of lines Brins	Weight lbs Poids lbs
220,500	7	14	2,730
167,600	5	11	1,540
110,200	3	7	1,540
48,500	1	3	990
16,500	–	1	500

Working speeds Vitesses

Crane carrier/Châssis porteur

	min.	max.	%
445/95 R 25 (16.00 R 25) 525/80 R 25 (20.5 R 25)	0.3	53	61 %

	12 / R2
	4 / R2

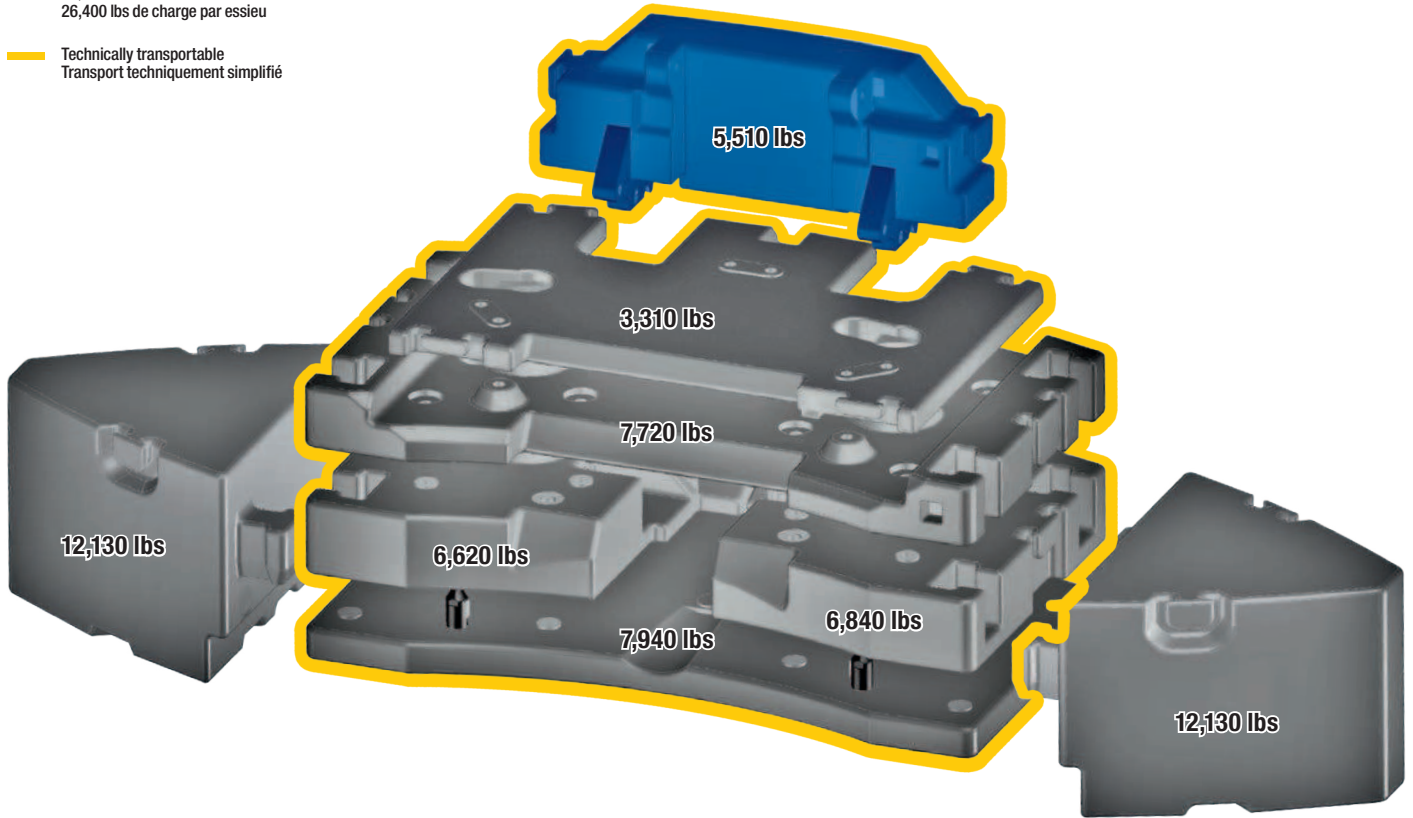
Crane superstructure/Partie tournante

Drive Mécanismes	infinitely variable en continu	Rope diameter / length Diamètre / Longueur du câble	Max. single line pull Effort au brin maxi.
	0 – 377 ft/min single line ft/min au brin simple	0.74" / 820 ft	17,310 lbs
	0 – 377 ft/min single line ft/min au brin simple	0.74" / 820 ft	17,310 lbs
	0 – 1.7 rpm		
	approx. 60 seconds to reach 82° boom angle env. 60 s jusqu'à 82°		
	approx. 400 seconds for boom extension from 38 ft – 197 ft env. 400 s pour passer de 38 ft – 197 ft		

Counterweight Contrepoids



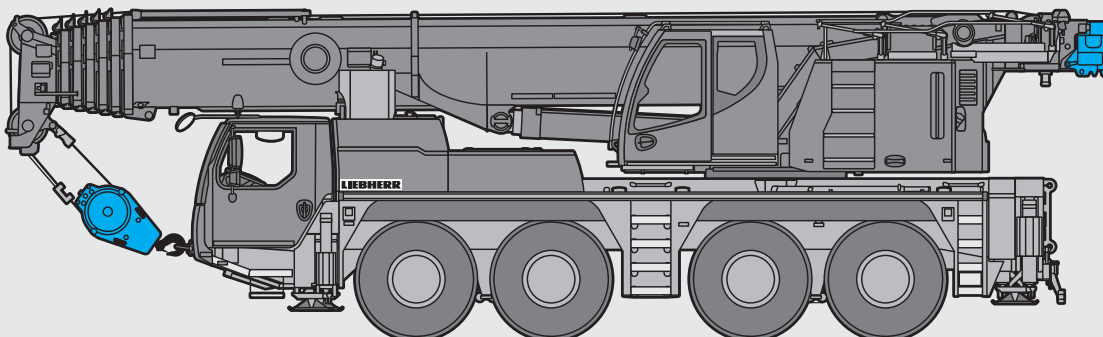
- 26,400 lbs axle load
26,400 lbs de charge par essieu
- Technically transportable
Transport techniquement simplifié



Axle/Essieu

Axle Essieu	1	2	3	4	Total weight lbs Poids total lbs
lbs	26,400	26,400	26,400	26,400	105,600 ¹⁾

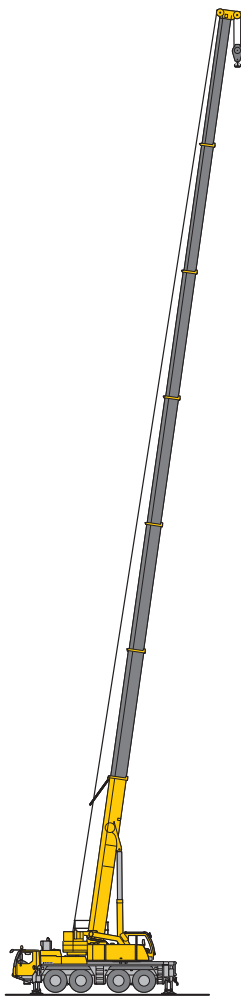
¹⁾ with 5,500 lbs counterweight · avec contrepoids 5,500 lbs



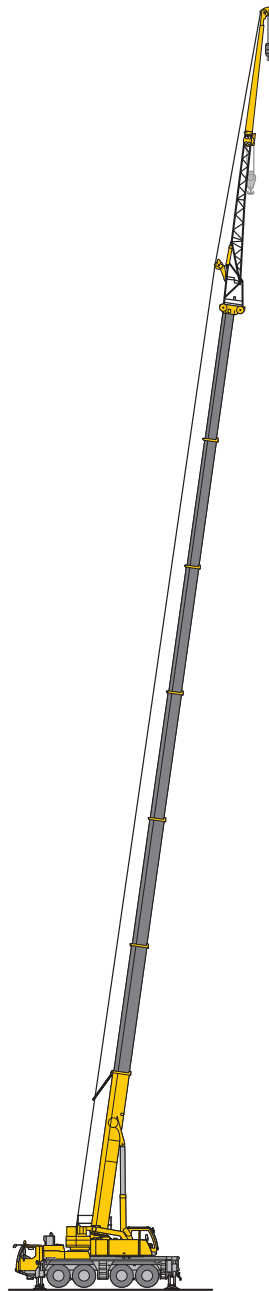
S3113

Boom/jib combinations Configurations de flèche

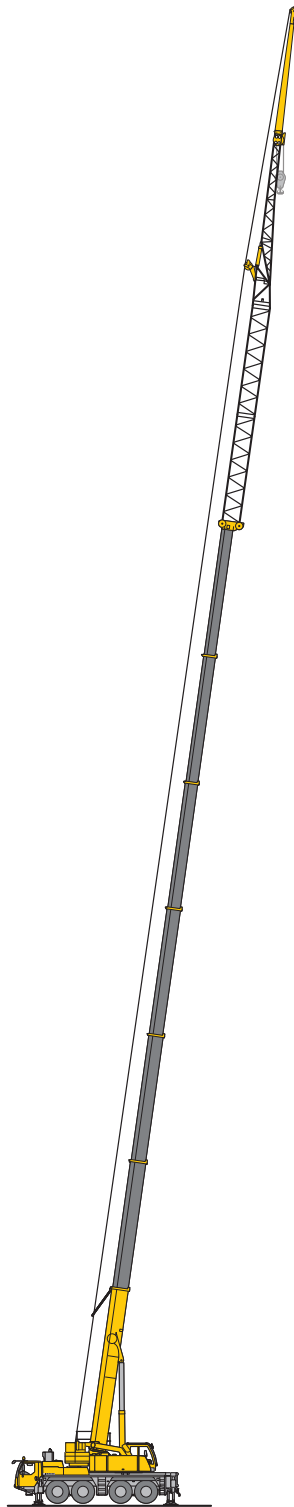
- T** Telescopic boom/Flèche télescopique
- K** Erection jib/Flechette de montage
- NZK** Hydraulic swing away jib/Fléchette pliante hydraulique
- V** Telescopic boom extension
Rallonge de flèche télescopique



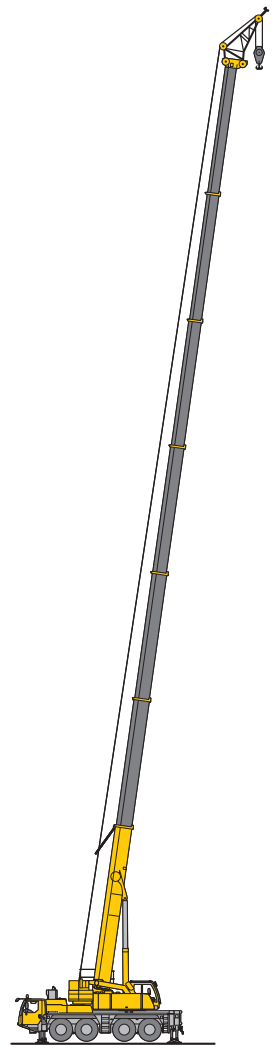
T
10 – 15



TK/TNZK
16 – 20



TVK/TVNZK
21 – 26

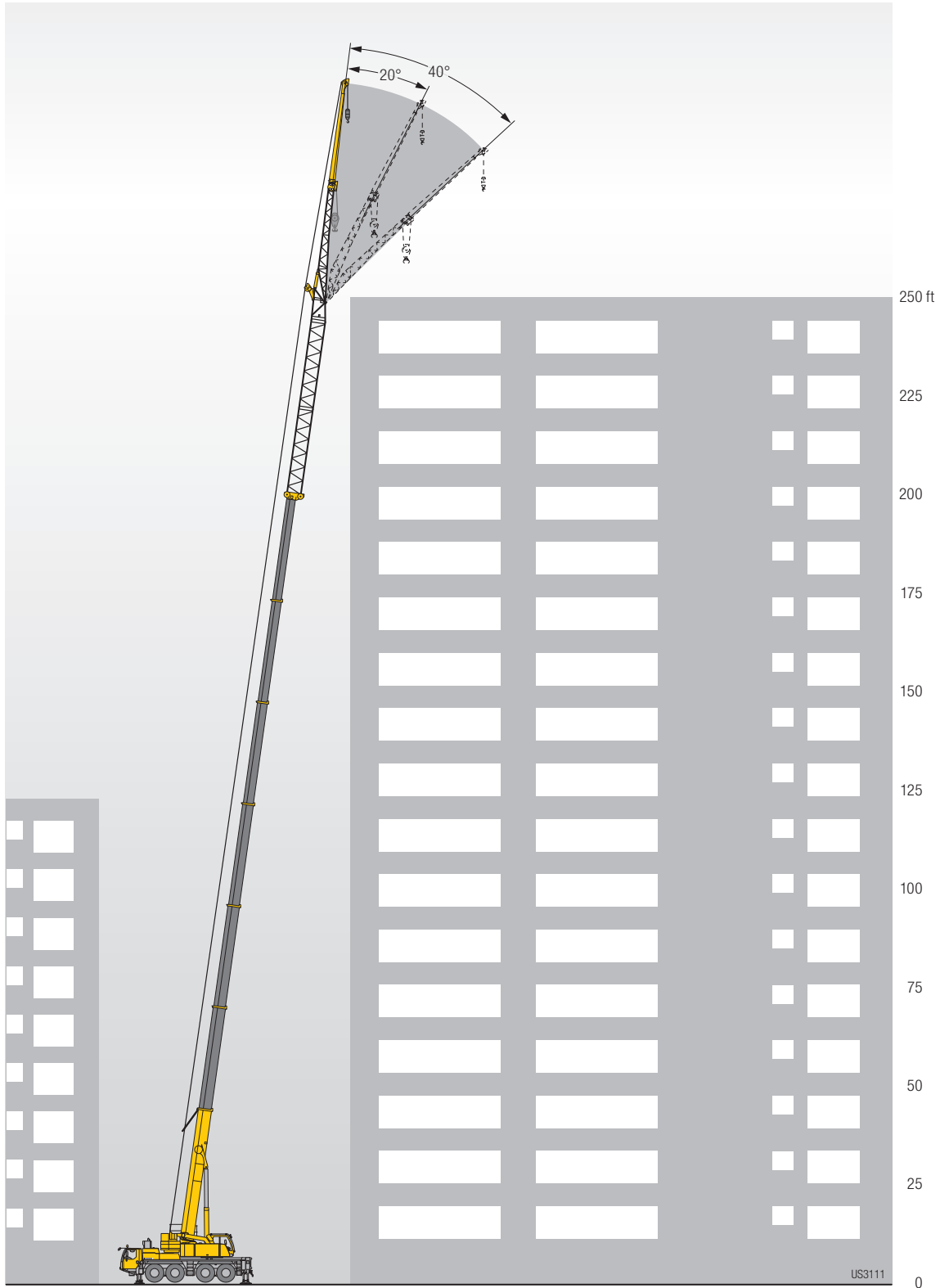


TK
27 – 28

S3112

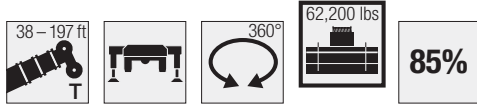


Hydraulic swing away jib Flèche pliante hydraulique



Lifting capacities Forces de levage

T



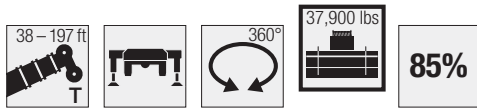
	38 ft	50 ft	62 ft	74 ft	86 ft	99 ft	111 ft	123 ft	135 ft	148 ft	156 ft	160 ft	170 ft	172 ft	182 ft	184 ft	197 ft		
	*																		
9		143.8	142.3	142.9	142.3														9
10	223.4	141.8	141.6	141.4	141.2														10
11	172.1	139.2	139	138.8	138.7	137.2													11
12	164.6	136	135.9	135.6	135.6	134.9													12
13	156.4	132.1	132.3	131.9	131.9	131	113.4												13
14	148.6	126.2	126.7	126.6	126.5	126	113												14
15	141.5	120.1	120.8	121.1	120.9	120.9	112.3												15
16	134.8	114.5	115.3	115.5	115.8	115.5	110.7												16
17	128.2	109.5	110.5	110.8	111.2	110.7	107.8	92.5											17
18	121.8	105	106.2	106.7	106.8	106.2	104.1	92.6	76.5										18
20	110.6	96.3	97.8	98.6	98.4	97.8	96.9	92.2	76										20
22	101	89.2	90.6	91.9	92	91.6	90.9	88	75.6	62.1	50.7								22
24	93	82.6	84.2	85.6	85.9	85.6	84.9	83.2	74.9	61.7	50.5								24
26	85.8	76.4	78.5	79.7	80.1	79.9	79	77.8	74	61.3	51.1								26
28	78.7		73.5	74.6	74.9	74.7	73.9	72.9	70.2	60.7	50.9	36.6	42.2						28
30	62.9		68.6	69.7	69.9	69.7	69	68.2	66	59.8	50.6	36	42						30
32			63.9	65.1	65.5	65.3	64.5	64.1	61.9	58.2	50.4	35.3	41.8	30.9	35.1	27.8	28.7		32
34			59.6	60.9	61.3	61	60.2	60.1	58.2	55.5	49.7	34.7	41.6	30.7	34.9	27.6	28.6		34
36			55.5	56.8	57.3	56.8	56.2	56.2	54.8	52.2	48.8	34.2	41.5	30.4	34.6	27.4	28.5	23.6	36
38				53.5	53.8	53.5	53.3	53.3	51.5	49	46	33.5	40.9	30	34.5	27.2	28.3	23.6	38
40				50.3	50.5	50.3	50.6	50.5	48.4	46	43.5	32.9	40.1	29.6	34.3	27.1	28.2	23.6	40
45				43.6	44	43.6	44.6	43.8	42.7	40.5	39	31.2	36.6	28.4	33.5	26.6	27.8	23.2	45
50					38.4	38.9	39.1	38.5	37.6	36.3	34.7	29.5	32.9	27.3	30.7	25.8	27.2	23	50
55					33.7	34.8	34.4	34.1	33.3	32.5	31.1	27.8	29.7	26	27.9	24.9	26	22.6	55
60					30	30.9	30.5	30.5	29.8	29	28.1	26.2	26.8	24.7	25.5	23.8	24	21.8	60
65						27.5	27.1	27.5	26.6	26.2	25.3	24.7	23.9	23.3	22.8	22.4	21.3	20.7	65
70						24.8	24.8	24.9	24.5	23.9	22.9	22.6	21.5	21.2	20.4	20.2	19	18.6	70
75							22.7	22.5	22.4	21.7	20.7	20.5	19.4	19.2	18.4	18.1	17	16.6	75
80							20.7	20.3	20.3	19.6	18.7	18.5	17.4	17.4	16.6	16.3	15.2	14.8	80
85								18.6	18.4	18	16.9	16.9	15.8	15.8	14.9	14.7	13.6	13.3	85
90								16.9	16.7	16.3	15.5	15.3	14.2	14.2	13.4	13.3	12.2	11.8	90
95									15.3	14.8	14.2	14	12.9	12.9	12.1	12.1	10.8	10.5	95
100									14	13.5	12.9	12.9	11.8	11.8	10.9	10.9	9.6	9.4	100
105									12.8	12.1	11.7	11.7	10.8	10.6	9.9	9.7	8.6	8.4	105
110										11.1	10.7	10.7	9.8	9.7	8.9	8.9	7.8	7.5	110
115										10.2	9.8	9.8	8.9	8.9	8	8	6.9	6.7	115
120											8.9	8.9	8.1	8.1	7.2	7.2	6.1	5.9	120
125											8.1	8.1	7.2	7.2	6.6	6.4	5.3	5	125
130											7.3	7.4	6.4	6.6	5.7	5.7	4.6	4.5	130
135												6.8	5.7	5.9	5	5.1	4	3.9	135
140													5.1	5.2	4.4	4.6	3.5	3.3	140
145													4.5	4.6	3.9	3.9	2.8	2.8	145
150														4.1	3.2	3.4	2.3	2.3	150
155															2.7	2.9			155
160																2.4			160

* over rear - en arrière

L187_01426_00_000 / 187_01113_00_000

Lifting capacities Forces de levage

T

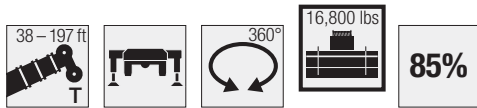


	38 ft	50 ft	62 ft	74 ft	86 ft	99 ft	111 ft	123 ft	135 ft	148 ft	156 ft	160 ft	170 ft	172 ft	182 ft	184 ft	197 ft	
9	153.1	151.2	144.3															9
10	151.9	150.7	144.3	143.7														10
11	145.2	144.7	142	142.3	136.8													11
12	138.2	138	137.3	137.8	133.8													12
13	130.8	130.8	130.3	130.5	129.1	113.4												13
14	124.3	124.8	124.7	124.9	124.2	113												14
15	118.2	119.1	119.3	119.5	119.1	112.1												15
16	112.8	113.7	114	114.2	113.7	109.8	92.3											16
17	107.9	108.9	109.2	109.4	108.9	106.1	91.9											17
18	103.3	104.5	104.9	105	104.5	101.5	91	76.5										18
20	94.2	95.8	96.6	96.6	95.9	92.4	88.2	75.5										20
22	86.1	88.3	89.6	89.7	88.9	84.1	80	72	62.1	50.7								22
24	78.5	81	82.5	82.7	81.3	76.4	72.9	67.8	60.8	50.5								24
26	71.2	73.9	75.4	75.6	73.1	69.4	66.7	62.8	58.7	51.1								26
28		68.1	69.6	69.6	66.7	64	61.3	58.3	55	49.4	36.6	42.2						28
30		62.8	64.1	63.8	60.8	59	56.3	54	51.2	47.2	36	41.9						30
32		57.8	59.3	58.6	55.8	54.8	52	50.2	47.7	44.7	35.3	40.9	30.9	35.1	27.8	28.7		32
34		53.4	54.9	54	52.1	51	48.6	46.9	44.7	42.2	34.7	39.4	30.7	34.7	27.6	28.6		34
36		49.3	50.9	49.8	49.3	47.3	45.8	43.8	42	39.8	34.2	37.6	30.4	34.2	27.4	28.5	23.6	36
38			47.5	46.4	46.2	44.2	42.8	41.1	39.7	37.9	33.5	35.7	30	32.8	27.2	28.3	23.6	38
40			44.4	43.4	43.3	41.4	40.1	38.6	37.5	36	32.8	33.8	29.6	31.3	27.1	27.9	23.6	40
45			37.6	37.7	36.9	35.9	34.9	33.8	32.5	31.1	30.2	29.3	28.3	27.8	26.6	25.6	23.2	45
50				33	32	31.7	30.5	29.6	28.4	27.1	26.8	25.4	25.1	24.1	23.7	22.4	21.4	50
55				28.8	28.1	28	26.8	26	24.9	23.6	23.4	22.2	21.9	20.9	20.7	19.4	18.9	55
60				25	24.8	24.6	23.7	22.9	21.8	20.7	20.5	19.4	19.2	18.3	18.1	16.8	16.3	60
65					22	21.9	21.1	20.4	19.3	18.4	18.2	17	16.8	15.9	15.7	14.6	14.2	65
70					19.4	19.8	19	18.2	17.2	16.3	16.1	15	14.9	14	13.8	12.7	12.4	70
75						17.8	17	16.3	15.4	14.5	14.4	13.3	13.3	12.4	12.2	11.1	10.8	75
80						15.9	15.3	14.7	13.8	12.9	12.9	11.8	11.7	10.9	10.7	9.6	9.4	80
85							13.8	13.3	12.4	11.5	11.5	10.4	10.2	9.6	9.3	8.2	8	85
90								12.4	12	11.1	10.4	10.2	9.1	9	8.4	8.2	7.1	90
95									10.7	10	9.2	9.1	8	8	7.3	7.1	6	95
100									9.6	9	8.1	8.1	7	7	6.3	6.1	5	100
105									8.6	8.2	7.3	7.3	6.2	6.2	5.3	5.3	4.2	105
110										7.2	6.4	6.4	5.3	5.5	4.6	4.6	3.4	110
115										6.3	5.7	5.7	4.6	4.7	4	4	2.6	115
120											5	5	4	4	3.3	3.3		120
125											4.4	4.4	3.5	3.5	2.6	2.6		125
130											3.7	3.7	2.8	2.8	2.1	2.1		130
135												3.2	2.3	2.3				135

t_187_01116_00_000

Lifting capacities Forces de levage

T

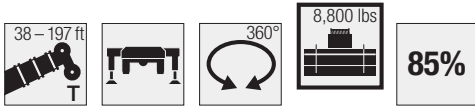


	38 ft	50 ft	62 ft	74 ft	86 ft	99 ft	111 ft	123 ft	135 ft	148 ft	156 ft	160 ft	170 ft	172 ft	182 ft	184 ft	197 ft	
9	149.8	143.6	137.5	136.8														9
10	144.9	142.7	137.3	136.7														10
11	137	136.1	134.2	134	129.7													11
12	129.5	129.7	129.6	129.2	126.3													12
13	122.6	123.4	123.5	122.5	121.2	107.9												13
14	116.5	117.3	117.5	117.2	115.3	104.2												14
15	110.7	111.5	111.6	112	108.7	99.2												15
16	105.2	106.3	106.2	106.3	100.4	91.7	84.7											16
17	99.7	101.2	101.3	100.7	93.9	86.2	81.3											17
18	94.3	95.9	96.8	94.9	88.6	82.2	77.2	69.9										18
20	83.7	85.8	87.5	83.8	78.4	74.2	69.3	65.4										20
22	75.1	77.8	77.6	74.1	69.4	66.8	62.4	59.2	54.4	46.7								22
24	66.5	69.7	68.8	65.7	62.4	60.1	56.6	53.8	50.5	44.7								24
26	57.7	61.6	61.1	58.4	57.3	54.1	51.7	49.1	46.6	43								26
28		54.5	55.1	53.1	52.3	49.2	47.7	45.4	43.1	40.5	34.8	37.3						28
30		47.9	49.5	48.3	47.6	45	44	42	39.9	37.9	34.2	35.1						30
32		42.7	44.4	44.8	43.5	42.3	40.6	39	36.9	35.1	33.2	32.7	29.6	30.3	26.5	26.8		32
34		38.2	40	41.3	40.1	39.4	37.6	36.1	34.2	32.4	31.6	30.3	28.7	28.6	26	25.7		34
36		34.3	36.1	37.6	37	36.3	35	33.4	31.6	29.9	29.4	27.9	27.4	26.3	25.2	24.1	22.1	36
38			33	34.5	34.3	33.8	32.5	31.1	29.5	27.8	27.4	25.9	25.4	24.4	23.6	22.4	20.6	38
40			30.2	31.7	31.7	31.6	30.3	29	27.5	25.9	25.5	24	23.6	22.7	22	20.7	19.2	40
45			24.6	26.2	26.2	26.7	25.4	24.4	23.1	21.7	21.5	20.1	19.9	18.8	18.3	17	15.8	45
50				21.9	21.9	22.5	21.7	20.9	19.7	18.5	18.3	16.9	16.7	15.8	15.3	14.1	13.2	50
55				18.3	18.4	19	18.6	17.8	16.8	15.7	15.6	14.3	14.1	13.2	12.8	11.7	10.9	55
60				15.5	15.7	16.1	15.9	15.3	14.4	13.3	13.3	12	12	11.1	10.7	9.6	8.9	60
65					13.3	13.9	13.7	13.3	12.4	11.5	11.3	10.2	10.2	9.3	9	7.9	7.3	65
70					11.4	12.1	11.8	11.5	10.7	9.9	9.7	8.6	8.6	7.7	7.6	6.4	5.9	70
75						10.4	10.2	10	9.2	8.5	8.4	7.3	7.3	6.4	6.3	5.1	4.7	75
80						9	8.7	8.5	7.9	7.2	7.2	6.1	6.1	5.3	5	3.9	3.7	80
85							7.6	7.4	6.9	6	6	4.9	4.9	4.3	4	2.9	2.7	85
90							6.6	6.3	5.7	5.2	5.2	4.1	4.1	3.2	3.2			90
95								5.4	4.8	4.3	4.3	3.2	3.3	2.4	2.4			95
100									4.6	4	3.5	3.5						100
105									3.8	3.3	2.9	2.9						105
110										2.6	2.2	2.2						110
115										2.1								115

t_187_00020_00_000

Lifting capacities Forces de levage

T



	38 ft	50 ft	62 ft	74 ft	86 ft	99 ft	111 ft	123 ft	135 ft	148 ft	156 ft	160 ft	170 ft	172 ft	182 ft	184 ft	197 ft	
9	149.4	143.5	137.5	136.8														9
10	144	142.4	137.2	136.6														10
11	136.1	135.6	133.6	133.6	128.6													11
12	128.7	128.9	128.7	128.4	123.8													12
13	121.9	122.5	122.7	121.5	116.8	104.6												13
14	115.5	116.3	116.5	114.4	107	96.5												14
15	109.2	110.3	110.3	106.9	97.6	88.7												15
16	102.9	104.7	104	98.3	90.6	84.2	79.1											16
17	97	99.2	97.7	91.4	84.6	79.9	74.6											17
18	91.4	93.5	91.4	85.6	79.4	75.5	70.4	64.5										18
20	80.4	82.3	79.3	74.4	69.5	67	62.3	59.2										20
22	70.2	71.6	69.1	65.6	62.8	59.6	56.3	53.2	49.4	41.9								22
24	60.3	62.3	60.6	58.4	56.5	53.6	51	48.3	45.2	39.5								24
26	50.8	54.5	53.8	52.9	50.6	48.9	46.4	44.4	41.7	38.7								26
28		47.9	48.3	48	45.9	44.6	42.4	40.5	38.2	35.8	33.9	33.2						28
30		41.9	43.3	43.4	41.7	40.6	38.7	36.8	34.8	32.7	32	30.3						30
32		37.2	38.8	39.5	37.9	37.1	35.3	33.7	31.8	30	29.3	27.7	26.6	25.2	24.8	23.4		32
34		33.2	35	36.1	34.6	34	32.4	30.9	29.2	27.5	26.9	25.4	25	23.7	23.1	21.7		34
36		29.7	31.5	33	31.7	31.2	29.9	28.3	26.8	25.2	24.8	23.2	22.8	21.7	21	19.7	18.4	36
38			28.6	30.2	29.2	28.9	27.6	26.3	24.8	23.3	22.9	21.5	21	20.1	19.4	18.1	16.8	38
40			26	27.6	27	26.8	25.5	24.4	22.9	21.6	21.2	19.8	19.4	18.5	17.9	16.6	15.3	40
45			20.8	22.4	22.3	22.4	21.3	20.4	19	17.9	17.6	16.3	16.1	15	14.7	13.4	12.4	45
50				18.4	18.4	18.9	18	17.2	16.1	15	14.8	13.6	13.4	12.3	12.1	10.9	10	50
55				15.3	15.3	15.9	15.4	14.6	13.6	12.6	12.4	11.3	11.1	10.1	9.9	8.7	8	55
60				12.9	12.9	13.5	13.1	12.4	11.4	10.5	10.3	9.2	9.2	8.3	8.1	6.8	6.3	60
65				10.8	10.8	11.5	11.1	10.6	9.7	8.8	8.8	7.5	7.5	6.6	6.6	5.3	4.8	65
70					9.1	9.8	9.5	9	8.2	7.4	7.3	6.1	6.2	5.4	5.2	4	3.6	70
75						8.3	8	7.7	6.8	6.2	6	4.9	5.1	4.2	4.1	2.9		75
80							7	6.6	6.5	5.7	5	5	3.9	3.9	3.1	3.1		80
85								5.6	5.4	4.7	4	4	2.9	2.9	2			85
90								4.7	4.5	3.8	3.2	3.2		2.2				90
95									3.7	3.1	2.4	2.4						95
100										2.9	2.4							100
105											2.4							105

t_187_00022_00_000

Remarks referring to load charts

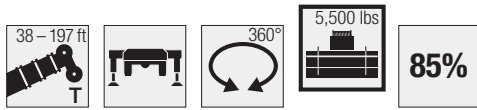
- The lifting capacities do not exceed 85 % of the tipping load according to ASME B 30.5. The crane's structural steelwork is in accordance with EN 13000 and ASME B 30.5.
- For the calculation of the load charts at least a wind speed of 30 ft/s (9 m/s, 20 mph) and regarding the load a sail area of 1 m² per ton load and a wind resistance coefficient of 1.2 on the load have been taken into account. For lifting of loads with large sail areas and/or high wind resistance coefficients the maximum wind speed as stated in the load charts has to be reduced.
- Lifting capacities are given in kips.
- The weight of the hook blocks and hooks must be deducted from the lifting capacities.
- Working radii are measured from the slewing centre.
- The lifting capacities given for the telescopic boom only apply if the folding jib is taken off.
- Lifting capacities above 153,200 lbs/181,200 lbs only with additional pulley block/special equipment.
- The data of this brochure serves only for general information. All information is provided without warranty. Instructions for the correct commissioning of the crane please take from the operation manual and the load chart book.

Remarques relatives aux tableaux des charges

- La capacité de charge ne doit pas dépasser 85 % de la charge de basculement conformément à ASME B 30.5. La structure métallique de la grue est conforme à EN 13000 et ASME B 30.5.
- Une vitesse de vent de 30 ft/s (9 m/s, 20 mph) minimum, une surface de prise au vent de 1 m² par tonne ainsi qu'un coefficient de résistance au vent de la charge 1,2 sont pris en compte pour le calcul des tableaux de charge. Lorsque des charges ayant une surface de prise au vent et/ou un coefficient de résistance au vent plus élevé(e)s sont levées, la vitesse de vent maximale indiquée dans les tableaux de charge doit être réduite.
- Les forces de levage sont données en kips.
- Les poids des mouffes et crochets doit être soustrait des charges indiquées.
- Les portées sont calculées à partir de l'axe de rotation.
- Les forces indiquées pour la flèche télescopique s'entendent fléchette dépliable déposée.
- Forces de levage plus de 153,200 lbs/181,200 lbs seulement avec moufle additionnel/équipement supplémentaire.
- Les données de cette brochure sont données à titre informatif. Ces renseignements sont sans garantie. Les consignes relatives à la bonne mise en service de la grue sont disponibles dans le manuel d'utilisation et le manuel de tableaux de charge.

Lifting capacities Forces de levage

T

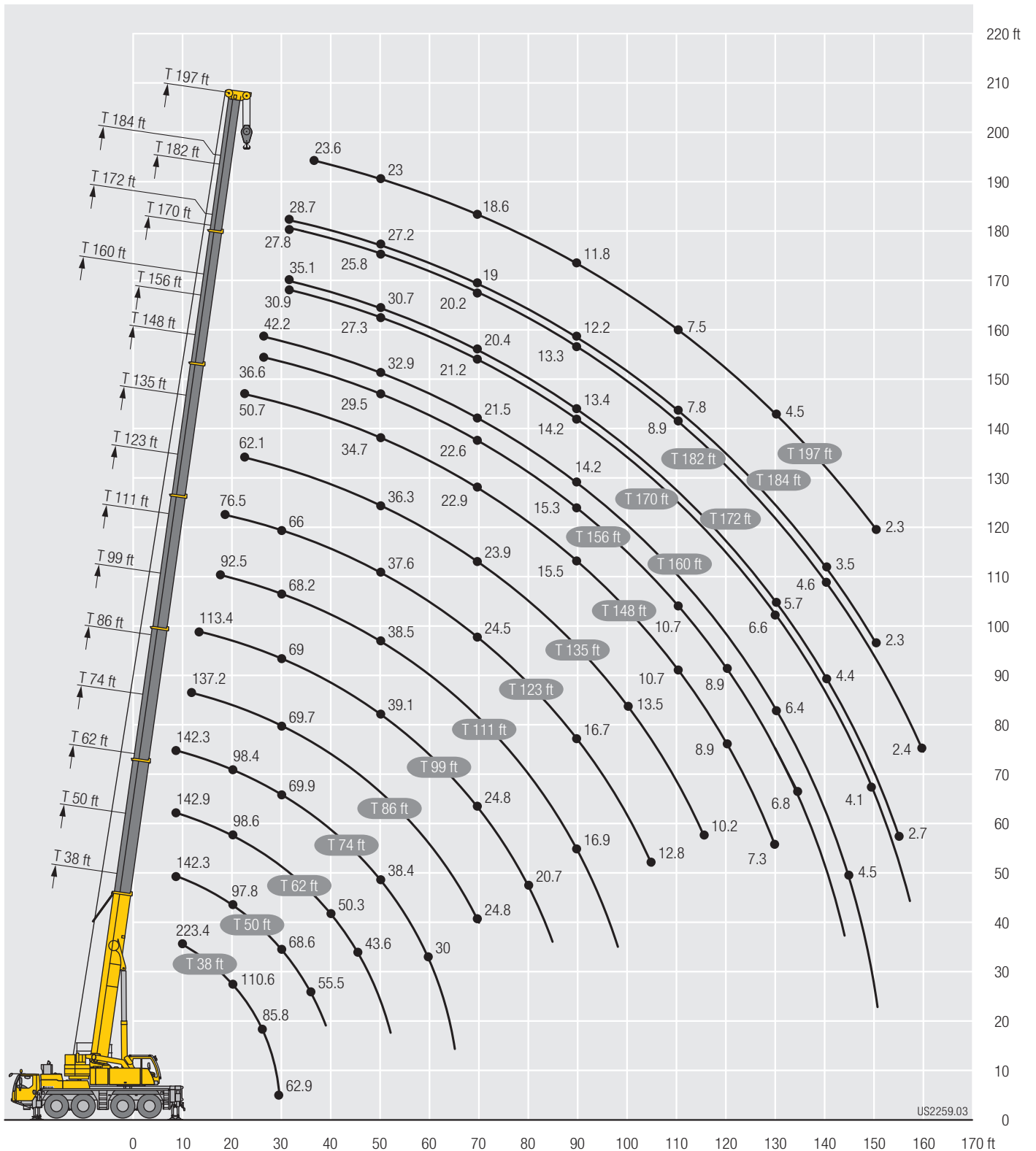


	38 ft	50 ft	62 ft	74 ft	86 ft	99 ft	111 ft	123 ft	135 ft	148 ft	156 ft	160 ft	170 ft	172 ft	182 ft	184 ft	197 ft	
9	149.3	143.4	137.5	136.8														9
10	143.8	142.2	137.2	136.6														10
11	135.9	135.2	133.4	133.2	126.9													11
12	128.4	128.5	128.4	127.6	120.6													12
13	121.3	122.1	122.2	119.8	112.2	100.1												13
14	114.7	115.6	116.1	110.7	102	93.1												14
15	108.2	109.3	109.4	101.6	92.7	86.4												15
16	101.5	103.4	101.2	93.2	86.7	81.7	75.6											16
17	95.4	97.1	94	86.5	81.4	77	71.3											17
18	89.8	90.7	87.5	81	76.7	72.4	67.4	60.8										18
20	78.5	78.1	75	70.6	67.6	63.5	59.9	56										20
22	67	67.5	65.3	62.4	59.9	56.4	54	50.5	47.2	39.2								22
24	56.8	58.6	57.2	55.6	53.4	50.6	48.7	45.8	43	36.6								24
26	47.6	51.4	50.6	50.1	47.9	46.2	44	41.7	39.1	36.2								26
28		45.2	45.5	45.3	43.3	42	39.9	37.8	35.5	33.3	32.3	30.8						28
30		39.5	40.7	40.8	39.1	38	36.1	34.2	32.2	30.3	29.6	28.1						30
32		34.9	36.5	36.9	35.4	34.7	32.8	31.3	29.4	27.7	27.1	25.5	24.4	23.2	22.8	21.2		32
34		31	32.8	33.5	32.2	31.7	30.1	28.8	26.9	25.4	24.8	23.3	22.9	21.7	21.2	19.7		34
36		27.5	29.3	30.6	29.2	29	27.7	26.3	24.8	23.2	22.8	21.3	21	19.7	19.3	17.9	16.4	36
38			26.5	28	26.9	26.8	25.5	24.3	22.9	21.4	21	19.6	19.3	18.2	17.6	16.3	15	38
40			24.1	25.6	24.8	24.8	23.5	22.4	21.1	19.6	19.4	18.1	17.7	16.8	16.2	14.8	13.8	40
45			19	20.6	20.6	20.6	19.5	18.6	17.4	16.3	16.1	14.7	14.5	13.6	13.1	11.8	10.9	45
50				16.9	17	17.4	16.4	15.7	14.6	13.5	13.4	12.1	12	11	10.7	9.5	8.6	50
55				14	14	14.6	13.9	13.2	12.1	11.1	11.1	9.9	9.9	8.8	8.6	7.5	6.7	55
60				11.6	11.7	12.2	11.8	11.2	10.1	9.2	9.2	8.1	8.1	7	6.8	5.7	5.1	60
65					9.7	10.4	9.9	9.5	8.6	7.7	7.7	6.4	6.6	5.5	5.5	4.4	3.9	65
70					8.2	8.7	8.4	7.9	7.2	6.3	6.3	5.1	5.2	4.3	4.3	3	2.7	70
75						7.3	7.1	6.7	6	5.1	5.2	4.1	4.1	3.2	3.2			75
80							6.1	5.9	5.7	4.8	4	4.2	3.1	3.1				80
85								4.7	4.7	3.8	3.1	3.2	2	2.3				85
90								3.8	3.8	3.1	2.3	2.5						90
95								3	3	2.4								95
100									2.3									100

t_187_00023_00_000

Lifting heights Hauteurs de levage

T



Lifting capacities Forces de levage

TK/TNZK

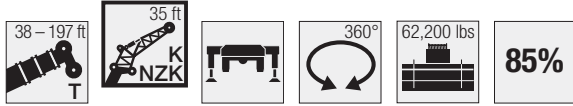


Jib ↙ ↘	38 ft			111 ft			123 ft			135 ft			148 ft			160 ft			Jib ↙ ↘
	0°	20°	40°	0°	20°	40°	0°	20°	40°	0°	20°	40°	0°	20°	40°	0°	20°	40°	
9	32.6																		9
10	32.6																		10
11	32.6																		11
12	32.6																		12
13	32.6																		13
14	32.6																		14
15	32.6																		15
16	32.6	30.9																	16
17	32.5	30.3																	17
18	32.2	29.7		32.6															18
20	31.6	28.5		32.6															20
22	30.5	27.4		32.6			32.6												22
24	29.5	26.3		32.6			32.6												24
26	28.6	25.3	22.8	32.6						29.6				26.2					26
28	27.5	24.5	22.1	32.6	30.5		32.6			29.3				26.1			22.4		28
30	26.4	23.8	21.5	32.6	30.3		32.6			29.1				26			22.3		30
32	25.4	23	20.9	32.6	29.8		32.6	28.8		28.9				26			22.3		32
34	24.3	22.3	20.4	32.6	29.2		32.5	28.4		28.8				25.9			22.3		34
36	23.2	21.6	19.9	32.6	28.7		32.2	28		28.7				25.8			22.3		36
38	22.3	21.1	19.5	32.6	28.2	22.9	31.8	27.5		28.3	26			25.7			22.1		38
40	21.3	20.6	19.1	32.5	27.6	22.6	31.4	27		27.9	25.7			25.5			22		40
45	19	19.2	18.4	31.9	26.3	22	30.2	26	21.7	27.2	24.7	21		25	23.7		21.9	21.5	45
50	17.2	18.1	17.8	30.8	25.2	21.3	29.2	25	21.1	26.6	23.9	20.5		24.5	23	20.1	21.6	21.1	50
55				29	24.2	20.7	27.3	24.1	20.5	25.7	23.2	20.1		23.7	22.4	19.7	21.2	20.7	55
60				26.6	23.2	20.2	24.6	23.2	20	24.2	22.4	19.8		22.4	21.7	19.3	20.8	20.2	60
65				23.7	22.4	19.7	21.7	22.4	19.7	21.7	21.7	19.2		20.9	21	19	19.8	19.9	65
70				21.2	21.5	19.2	19.2	20.5	19.2	20.5	20.3	18.9		19.4	19.9	18.7	18.3	18.8	70
75				18.9	20	18.8	17	18.5	18.6	19	19	18.5		17.7	18.6	18.1	16.9	17.5	75
80				17	18.1	18.3	15.4	16.5	17.6	17.2	17.8	17.8		16.1	17.2	17.4	15.6	16.1	80
85				15.3	16.4	17.3	14.6	14.7	15.8	15.5	16.6	16.8		15.1	15.5	16.4	14.4	14.4	85
90				13.8	14.7	15.5	13.9	13.5	14.1	14.5	15.1	15.7		14	14	14.9	13.1	13.5	90
95				12.4	13.3	13.9	13.3	12.7	12.8	13.6	13.7	14.4		12.9	13.1	13.5	11.8	12.6	95
100				11.2	12	12.6	12.6	12.2	12	12.7	12.6	13.1		11.8	12.5	12.4	10.7	11.5	100
105				10.1	10.8	11.2	12.1	11.7	11.5	11.7	11.9	11.9		10.8	11.5	11.9	9.7	10.4	105
110				9.1	9.8	10.1	11.3	11.2	11.1	10.7	11.2	11.4		9.8	10.5	10.9	8.7	9.4	110
115				8.1	8.8	8.9	10.4	10.6	10.7	9.8	10.3	10.7		8.9	9.6	10	7.8	8.5	115
120				7.2	7.8	7.8	9.6	9.9	10	8.9	9.4	9.8		8.1	8.7	9.2	7	7.7	120
125				6.3	6.8	6.7	8.8	9.2	9.2	8.1	8.5	8.8		7.2	7.9	8.3	6.4	7	125
130				5.5	5.9		7.9	8.4	8.4	7.4	7.7	7.9		6.7	7.2	7.5	5.7	6.2	130
135							7.2	7.7	6.9	6.8	7	7.2		6.1	6.6	6.8	5	5.5	135
140										6.1	6.3	6.5		5.4	5.9	6.1	4.4	4.9	140
145										5.5	5.7	5.8		4.8	5.2	5.4	3.9	4.3	145
150										4.9	5.2	4.8		4.3	4.5	4.8	3.4	3.8	150
155														3.8	4	4.1	2.9	3.3	155
160														3.3	3.5		2.4	2.8	160
165														2.8	3		1.9	2.1	165
170																	1.4	1.8	170

L187_01197_00_000

Lifting capacities Forces de levage

TK/TNZK



↙ ↘	170 ft 35 ft			172 ft 35 ft			182 ft 35 ft			184 ft 35 ft			197 ft 35 ft			↙ ↘
	0°	20°	40°	0°	20°	40°	0°	20°	40°	0°	20°	40°	0°	20°	40°	
32	15.7			18.8												32
34	15.7			18.7												34
36	15.7			18.7			14.1			14.8						36
38	15.7			18.7			14.1			14.8			12.4			38
40	15.7			18.7			14.1			14.8			12.4			40
45	15.7			18.7			14.1			14.8			12.4			45
50	15.5	15.6		18.6	18.6		14.1	14.1		14.6	15		12.4			50
55	15.3	15.3		18.4	18.4	17.6	14	14		14.6	14.9		12.4	12.4		55
60	15	14.9	14.7	18.2	18.3	17.4	13.9	13.9		14.5	14.7		12.3	12.4		60
65	14.8	14.4	14.2	17.9	18.1	17.2	13.7	13.7	13.7	14.4	14.6	14.4	12.2	12.4	12.1	65
70	14.5	13.9	13.8	16.8	17.6	16.9	13.5	13.4	13.4	14.3	14.3	13.9	12	12.4	12	70
75	14.1	13.5	13.4	15.8	16.5	16.6	13.4	13	12.9	14.1	13.9	13.5	11.9	12.2	11.9	75
80	13.5	13.1	12.9	14.8	14.9	15.9	13.1	12.7	12.5	13.4	13.5	13.1	11.8	11.9	11.9	80
85	13	12.6	12.6	13.3	13.5	14.4	12.6	12.4	12.2	12.4	13	12.8	11.3	11.7	11.7	85
90	12.5	12.3	12.1	12	12.8	13.1	11.8	12	11.8	11.1	12.1	12.5	10.5	11.2	11.4	90
95	11.7	11.9	11.7	10.7	11.9	12.3	10.7	11.5	11.5	9.8	11	11.7	9.4	10.4	10.9	95
100	10.7	11.4	11.4	9.6	10.9	11.5	9.6	10.7	11	8.7	9.8	10.7	8.3	9.4	10.2	100
105	9.5	10.4	11	8.6	9.7	10.4	8.6	9.5	10.4	7.7	8.6	9.5	7.3	8.4	9	105
110	8.6	9.4	10	7.8	8.7	9.4	7.8	8.6	9.4	6.7	7.6	8.5	6.4	7.4	8	110
115	7.8	8.5	9.1	6.9	7.8	8.5	6.9	7.7	8.3	5.8	6.7	7.5	5.6	6.5	7.1	115
120	7	7.6	8.3	6.1	7	7.6	6.1	6.8	7.4	5	5.9	6.5	4.8	5.6	6.3	120
125	6.1	6.8	7.4	5.3	6.1	6.8	5.3	6.1	6.6	4.4	5.2	5.7	4.1	4.8	5.5	125
130	5.5	6.1	6.6	4.6	5.5	5.9	4.8	5.5	5.9	3.7	4.4	5	3.5	4.1	4.8	130
135	4.9	5.5	5.9	4	4.8	5.2	4.1	4.8	5.2	3.2	3.8	4.3	2.8	3.5	4.1	135
140	4.4	4.9	5.2	3.5	4.2	4.6	3.5	4.1	4.6	2.6	3.2	3.7	2.2	2.9	3.5	140
145	3.9	4.3	4.6	3	3.7	3.9	3	3.5	3.9	2.1	2.6	3		2.4	2.8	145
150	3.4	3.8	4.1	2.5	3.2	3.4	2.5	3	3.4	1.6	2.1	2.3		1.9	2.3	150
155	2.9	3.3	3.6	2	2.7	2.9	2	2.5	2.8		1.6	1.8			1.8	155
160	2.4	2.8	3		2.2	2.4		2	2.3							160
165	1.9	2.3	2.3													165
170	1.6	1.8	1.8													170

t_187_01197_00_000

Lifting capacities Forces de levage

TK/TNZK

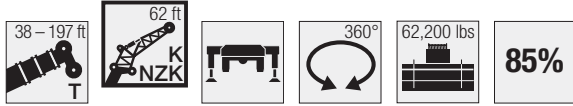


	38 ft			111 ft			123 ft			162 ft			148 ft			160 ft			
	62 ft			62 ft			62 ft			62 ft			62 ft			62 ft			
	0°	20°	40°	0°	20°	40°	0°	20°	40°	0°	20°	40°	0°	20°	40°	0°	20°	40°	
9	14.7																		9
10	14.5																		10
11	14.4																		11
12	14.3																		12
13	14.1																		13
14	14.1																		14
15	14.1																		15
16	13.9																		16
17	13.8																		17
18	13.6																		18
20	13.2																		20
22	12.9			14.6															22
24	12.7			14.5															24
26	12.4			14.4			13.9			13									26
28	12.1			14.2			13.8			13			12.4						28
30	11.8	11		14.1			13.6			13			12.3						30
32	11.6	10.7		13.9			13.5			12.8			12.2			11.2			32
34	11.3	10.4		13.7			13.4			12.7			12.1			11.2			34
36	11	10.2		13.5			13.2			12.6			12.1			11.2			36
38	10.9	10		13.3			13.1			12.4			12			11.1			38
40	10.7	9.9		13.2			13			12.3			11.9			11			40
45	10.2	9.4		12.9	10.6		12.6	10.6		12			11.7			10.8			45
50	9.7	9		12.4	10.3		12.2	10.3		11.8	10.2		11.4			10.7			50
55	9.2	8.7	8	12	10.1		11.8	10.1		11.5	10		11.2	9.8		10.5	9.4		55
60	8.7	8.3	7.7	11.6	9.9	8.4	11.6	9.9		11.2	9.7		11	9.6		10.3	9.2		60
65	8.2	8	7.7	11.3	9.5	8.2	11.3	9.5	8.2	10.8	9.5	8.2	10.6	9.3		10.2	9.1		65
70	7.7	7.8	7.6	11	9.3	8.2	11	9.3	8.2	10.7	9.2	8	10.4	9.1	8	10	8.9		70
75	7.2	7.7	7.5	10.6	9.2	8.1	10.6	9.2	8.1	10.4	8.9	7.9	10.2	8.9	7.9	9.7	8.7	7.8	75
80	6.8	7.7	7.5	10.3	9	7.9	10.3	9	7.9	10.1	8.8	7.9	9.9	8.8	7.9	9.4	8.6	7.7	80
85	6.4			10.2	8.6	7.7	10.2	8.8	7.7	9.9	8.6	7.7	9.7	8.6	7.7	9.3	8.4	7.7	85
90				9.8	8.4	7.7	9.8	8.7	7.7	9.8	8.4	7.7	9.5	8.4	7.7	9.3	8.4	7.6	90
95				9.5	8.4	7.7	9.6	8.5	7.7	9.6	8.4	7.7	9.4	8.4	7.6	9.1	8.3	7.5	95
100				9.2	8.3	7.7	9.4	8.3	7.7	9.4	8.3	7.7	9.2	8.3	7.5	8.8	8.1	7.5	100
105				9	8.2	7.5	9	8.2	7.5	9	8.2	7.5	8.8	8.2	7.5	8.6	7.9	7.5	105
110				8.7	8	7.5	8.5	8	7.5	8.7	8	7.5	8.7	8	7.5	8.3	7.9	7.5	110
115				8.4	7.9	7.5	8.2	7.9	7.5	8.5	7.9	7.5	8.4	7.9	7.5	8	7.8	7.5	115
120				8	7.9	7.5	7.9	7.8	7.5	8.3	7.9	7.5	8	7.9	7.5	7.6	7.7	7.5	120
125				7.7	7.7	7.5	7.7	7.5	7.5	7.9	7.7	7.5	7.7	7.7	7.5	6.8	7.5	7.5	125
130				7	7.5	7.5	7.4	7.1	7.3	7.6	7.5	7.5	7.2	7.4	7.5	6.1	7.1	7.3	130
135				6.3	7	7.2	7.2	6.9	7.2	7.2	7.2	7.5	6.6	7.2	7.2	5.6	6.6	7	135
140				5.7	6.3	6.7	6.9	6.8	7	6.8	6.9	7.3	6	6.8	7	5.1	6	6.6	140
145				5	5.7	5.8	6.6	6.6	6.8	6.1	6.6	6.8	5.5	6.3	6.8	4.6	5.4	6.1	145
150				4.3	5	5	6.2	6.4	6.6	5.6	6.2	6.5	4.9	5.6	6.3	4.1	4.8	5.4	150
155				3.8	4.3		5.8	6.1	6.2	5.1	5.8	6	4.4	5.1	5.6	3.6	4.2	4.9	155
160							5.3	5.7		4.6	5.3	5.4	3.9	4.6	5	3.1	3.8	4.4	160
165							4.8	5.2		4.1	4.7	4.8	3.5	4.1	4.5	2.6	3.4	3.9	165
170							4.5			3.8	4.1	4.3	3.1	3.6	4	2.3	2.9	3.4	170
175										3.3	3.7		2.6	3.2	3.4	1.9	2.4	2.9	175
180													2.2	2.8	2.8		2	2.4	180
185													1.9	2.3	2.3				185
190													1.6	1.8					190

t_187_01209_00_000

Lifting capacities Forces de levage

TK/TNZK

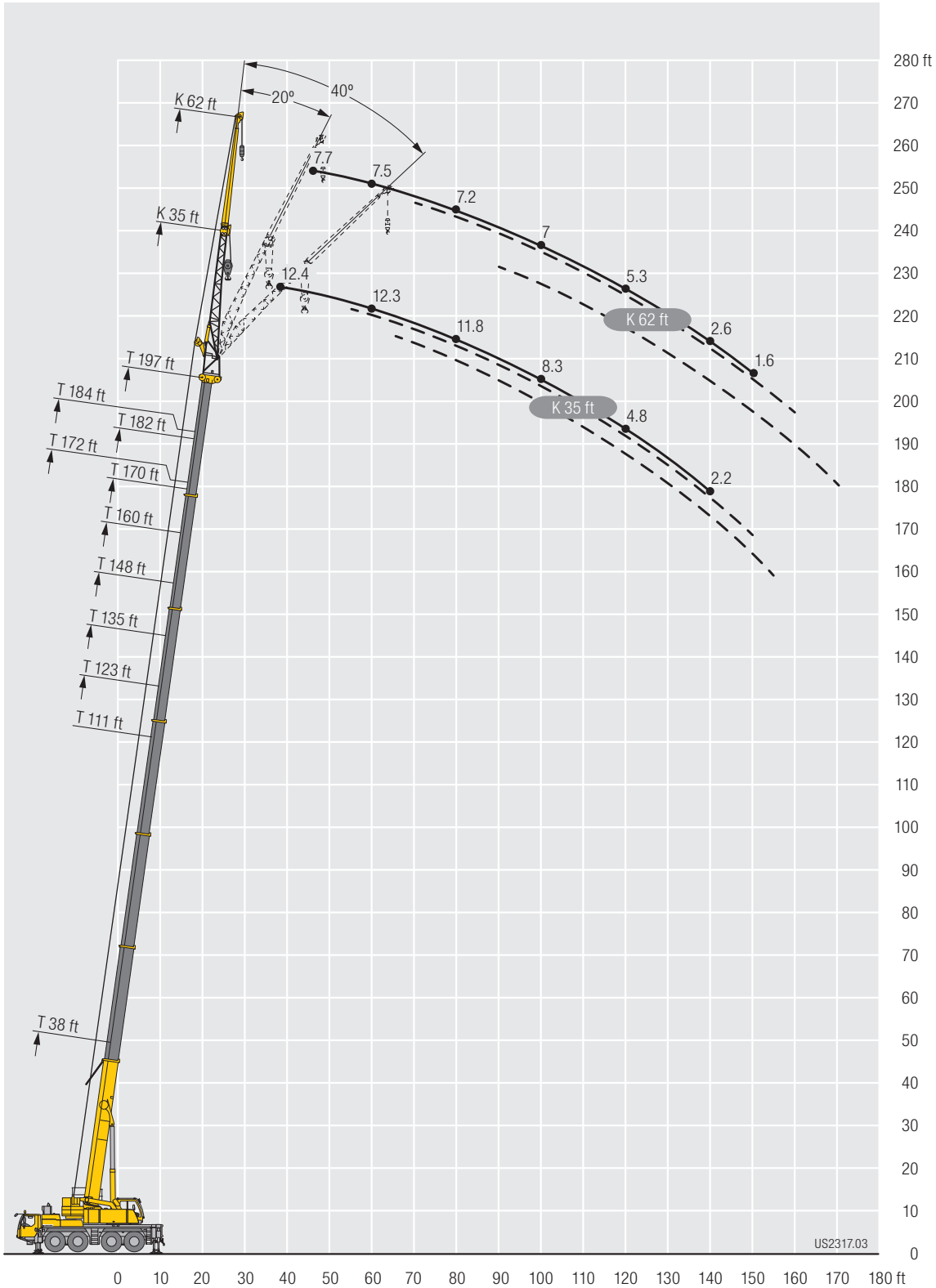


↙ ↘	170 ft 62 ft			172 ft 62 ft			182 ft 62 ft			184 ft 62 ft			197 ft 62 ft			↙ ↘
	0°	20°	40°	0°	20°	40°	0°	20°	40°	0°	20°	40°	0°	20°	40°	
36				10.1												36
38	9.3			10												38
40	9.2			9.9												40
45	9.1			9.9			8.4			8.8			7.7			45
50	8.9			9.8			8.4			8.7			7.6			50
55	8.8			9.6			8.3			8.6			7.5			55
60	8.8			9.5			8.2			8.6			7.5			60
65	8.6	8.2		9.3	8.6		8.2	7.9		8.4	8		7.5			65
70	8.6	8.2		9.3	8.5		8	7.8		8.4	7.9		7.4	7.3		70
75	8.5	8.1		9.2	8.4	7.7	7.9	7.7		8.3	7.8		7.3	7.3		75
80	8.3	7.9		9	8.3	7.7	7.9	7.7		8.2	7.7		7.2	7.2		80
85	8.2	7.9	7.5	8.8	8.2	7.5	7.9	7.5	7.3	8.2	7.7	7.3	7.1	7.1		85
90	8.2	7.8	7.5	8.7	8	7.5	7.8	7.5	7.3	8	7.7	7.3	7.1	7.1	7.1	90
95	8.1	7.7	7.4	8.5	7.9	7.5	7.7	7.5	7.3	7.9	7.6	7.3	7.1	7.1	7.1	95
100	7.9	7.7	7.3	8.3	7.9	7.4	7.7	7.4	7.3	7.8	7.5	7.3	7	7.1	7.1	100
105	7.9	7.5	7.3	8.2	7.7	7.3	7.5	7.3	7.3	7.5	7.5	7.3	6.8	7.1	7.1	105
110	7.8	7.5	7.3	7.8	7.7	7.3	7.3	7.3	7.3	7	7.3	7.3	6.5	6.9	7.1	110
115	7.6	7.5	7.3	7.3	7.6	7.3	6.9	7.3	7.3	6.3	7.3	7.3	5.9	6.7	7.1	115
120	7.2	7.4	7.3	6.6	7.4	7.3	6.4	7.2	7.2	5.5	7	7.2	5.3	6.4	7	120
125	6.6	7.3	7.3	5.9	7.2	7.3	5.7	7	7	4.8	6.4	7	4.6	5.9	6.8	125
130	5.9	6.9	7.1	5.2	6.6	7.3	5	6.3	6.9	4.1	5.7	6.5	3.9	5.2	6.3	130
135	5.4	6.3	6.9	4.7	5.9	6.8	4.5	5.7	6.5	3.6	5	5.9	3.2	4.6	5.7	135
140	4.8	5.7	6.5	4.2	5.2	6.1	4	5	5.9	3.1	4.3	5.2	2.6	4	5	140
145	4.1	5.2	5.9	3.7	4.6	5.4	3.5	4.3	5.2	2.6	3.7	4.5	2.1	3.4	4.3	145
150	3.6	4.5	5.4	3.2	4.1	4.8	3	3.8	4.7	2.1	3.2	3.9	1.6	2.8	3.7	150
155	3.3	4	4.7	2.7	3.6	4.2	2.5	3.3	4.1	1.6	2.7	3.3		2.2	3.1	155
160	2.8	3.6	4.2	2.2	3.1	3.6	2	2.8	3.5		2.2	2.8		1.8	2.6	160
165	2.4	3.2	3.7	1.7	2.6	3		2.4	3			2.3			2.1	165
170	2	2.7	3.2	1.4	2	2.7		2	2.5			1.8			1.6	170
175	1.7	2.4	2.6		1.7	2.2		1.5	2							175
180		1.9	2.2			1.7										180
185			1.9													185
190			1.4													190

t_187_01209_00_000

Lifting capacities Forces de levage

TK/TNZK



US2317.03

Lifting capacities Forces de levage

TVK/TVNZK

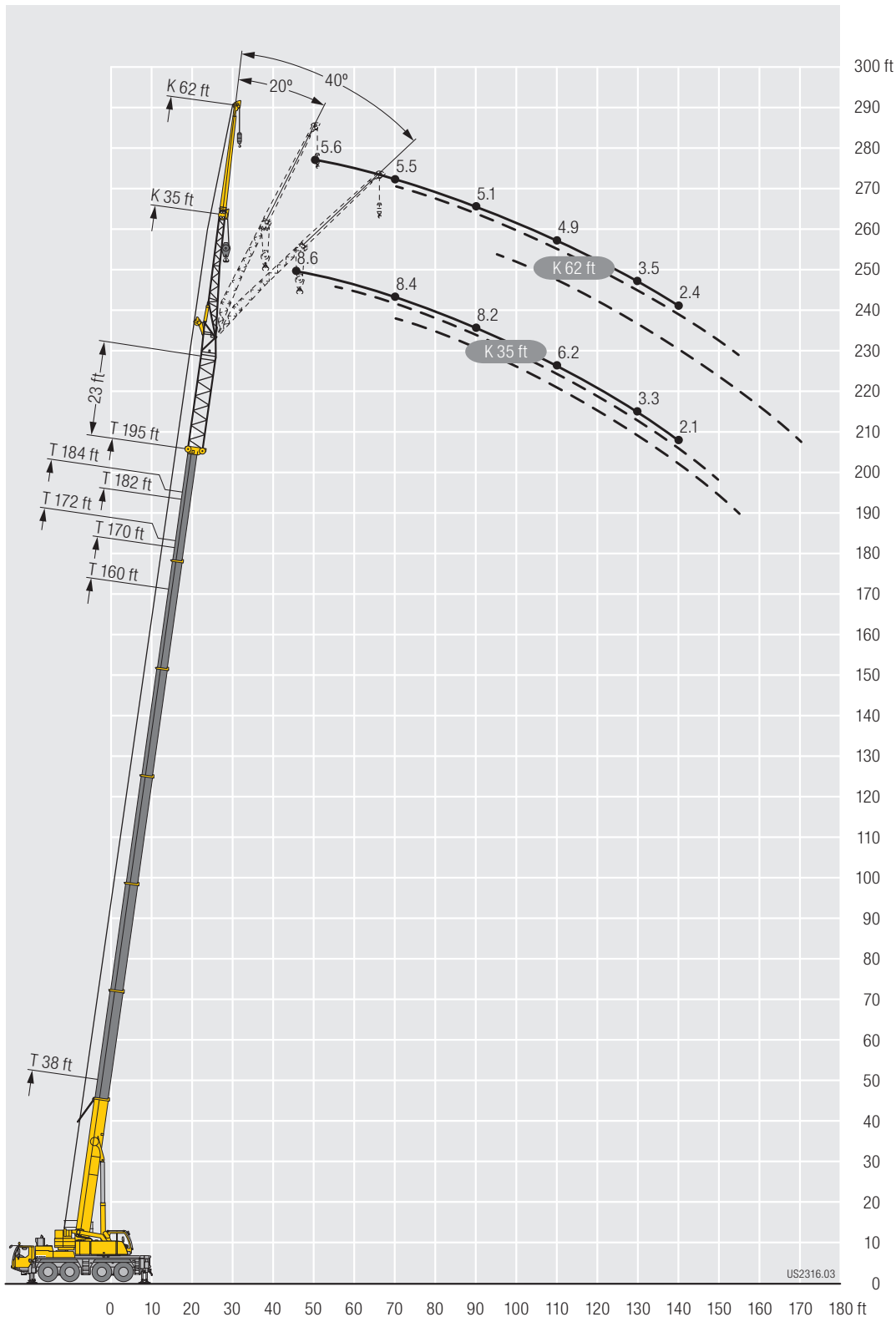


↙ ↘	38 ft + 23 ft			160 ft + 23 ft			170 ft + 23 ft			172 ft + 23 ft			182 ft + 23 ft			184 ft + 23 ft			195 ft + 23 ft			↙ ↘	
	62 ft			62 ft			62 ft			62 ft			62 ft			62 ft			62 ft				
	0°	20°	40°	0°	20°	40°	0°	20°	40°	0°	20°	40°	0°	20°	40°	0°	20°	40°	0°	20°	40°		
13	7.9																					13	
14	7.9																					14	
15	7.9																					15	
16	7.9																					16	
17	7.9																					17	
18	7.9																					18	
20	7.9																					20	
22	7.8																					22	
24	7.7																					24	
26	7.7																					26	
28	7.7																					28	
30	7.7																					30	
32	7.7																					32	
34	7.6																					34	
36	7.5	7.3																				36	
38	7.5	7.3																				38	
40	7.5	7.3																				40	
45	7.1	7.3		7.9			6.8			7.3												45	
50	6.8	7		7.8			6.8			7.1			6.2			6.4				5.6		50	
55	6.4	6.7		7.7			6.8			7.1			6.2			6.4				5.5		55	
60	5.9	6.3	6.6	7.7			6.6			7.1			6.2			6.4				5.5		60	
65	5.6	6	6.2	7.7			6.6			7.1			6.2			6.4				5.5		65	
70	5.2	5.7	5.9	7.7	7.3		6.6	6.2		7.1	6.6		6			6.4	6			5.5		70	
75	5	5.3	5.5	7.6	7.3		6.6	6.2		7	6.6		6	5.7		6.3	6			5.4	5.3	75	
80	4.8	5	5.3	7.5	7.3		6.6	6.2		6.8	6.6		6	5.7		6.2	6			5.3	5.3	80	
85	4.4	4.7	5.1	7.5	7.3	6.8	6.6	6.2		6.8	6.6		6	5.7		6.2	6			5.3	5.3	85	
90	4.3	4.5	4.8	7.3	7.1	6.7	6.5	6.2	6	6.8	6.6	6.4	6	5.7	5.5	6.2	6	5.7		5.1	5.3	90	
95	4	4.2	4.4	7.2	6.8	6.5	6.4	6.1	6	6.7	6.5	6.4	6	5.7	5.5	6.2	6	5.7		5.1	5.3	5.1	95
100	3.7	3.9		7	6.6	6.3	6.3	6	6	6.6	6.3	6.3	5.9	5.7	5.5	6.2	6	5.7		5	5.2	5.1	100
105	3.5	3.8		6.8	6.4	6.2	6.2	6	6	6.4	6.2	6.2	5.7	5.5	5.5	6.2	6	5.7		4.9	5.1	5.1	105
110				6.5	6.2	6	6	5.8	5.8	6.4	6.2	6	5.7	5.5	5.5	6	5.8	5.7		4.9	5.1	5.1	110
115				6.3	6.1	6	5.8	5.6	5.6	6.2	6.1	5.8	5.6	5.5	5.4	5.6	5.7	5.6		4.7	5.1	5.1	115
120				6.1	5.9	5.9	5.7	5.5	5.5	5.8	5.9	5.7	5.4	5.5	5.3	5	5.7	5.5		4.5	5	5.1	120
125				5.9	5.7	5.7	5.5	5.3	5.3	5.5	5.7	5.5	5	5.3	5.3	4.4	5.5	5.5		4.1	4.8	5.1	125
130				5.6	5.6	5.6	5.3	5.3	5.3	4.8	5.6	5.5	4.5	5.1	5.1	3.7	5.2	5.3		3.5	4.7	4.9	130
135				5.1	5.4	5.4	4.8	5.2	5.2	4.3	5.3	5.4	4	4.9	5.1	3.2	4.6	5.2		2.9	4.3	4.9	135
140				4.6	5.2	5.2	4.2	5	5	3.7	4.9	5.2	3.5	4.6	5	2.6	3.9	4.9		2.4	3.8	4.6	140
145				3.9	5	5.1	3.7	4.8	4.8	3	4.3	5	2.8	4.1	4.8	2.1	3.2	4.3			3.2	4.1	145
150				3.4	4.5	4.9	3.2	4.3	4.7	2.5	3.7	4.5	2.3	3.4	4.3	1.6	2.7	3.7			2.6	3.6	150
155				3	4	4.6	2.7	3.8	4.4	2.2	3.1	4	1.9	2.9	3.8		2.2	3.1		2	3		155
160				2.6	3.5	4.2	2.3	3.3	3.9	1.7	2.6	3.4		2.5	3.3		1.7	2.6				2.4	160
165				2.1	3	3.7	1.9	2.8	3.4		2.1	2.8		2.1	2.8			2.1				1.9	165
170				1.8	2.5	3.2		2.3	2.9		1.8	2.5		1.6	2.3			1.6				1.4	170
175					2.1	2.6		1.9	2.4			2			1.8								175
180					1.8	2.1			2														180

t_187_01305_00_000

Lifting heights Hauteurs de levage

TVK/TVNZK



Lifting capacities Forces de levage

TVK/TVNZK



↙	38 ft + 46 ft			160 ft + 46 ft			170 ft + 46 ft			172 ft + 46 ft			182 ft + 46 ft			184 ft + 46 ft			195 ft + 46 ft			↘
	35 ft			35 ft			35 ft			35 ft			35 ft			35 ft			35 ft			
	0°	20°	40°	0°	20°	40°	0°	20°	40°	0°	20°	40°	0°	20°	40°	0°	20°	40°	0°	20°	40°	
11	8.4																					11
12	8.4																					12
13	8.4																					13
14	8.4																					14
15	8.4																					15
16	8.2																					16
17	8.2																					17
18	8.2																					18
20	8.2																					20
22	8.2																					22
24	8.1																					24
26	8	8.4																				26
28	7.9	8.3																				28
30	7.9	8.2																				30
32	7.8	8.2																				32
34	7.6	8.1																				34
36	7.5	7.9	8.2																			36
38	7.4	7.8	8																			38
40	7.2	7.6	7.9																			40
45	6.9	7	7.4	8.2				6.9			7.3			6.2			6.4					45
50	6.4	6.6	6.9	8.2				6.8			7.3			6.2			6.4			5.5		50
55	5.9	6.1	6.4	8.1	8.2			6.8	7.1		7.3	7.3		6.2			6.4			5.5		55
60	5.5	5.7	5.9	7.9	8.1			6.8	7		7.2	7.3		6.2			6.4			5.5		60
65	5.1	5.3	5.6	7.9	8	8.2		6.8	6.9		7.1	7.3		6.2	6.2		6.4	6.4		5.3	5.5	65
70	4.8	5	5.2	7.8	7.9	7.9	6.7	6.8	6.9	7.1	7.3	7.4	6	6.2	6.4	6.3	6.4	6.6	5.3	5.5		70
75	4.4	4.7	4.9	7.6	7.8	7.6	6.6	6.7	6.7	7.1	7.2	7.2	6	6.2	6.3	6.2	6.4	6.6	5.2	5.4	5.6	75
80	4.2	4.4	4.5	7.5	7.5	7.4	6.6	6.6	6.6	7	7	7	6	6.1	6.2	6.2	6.4	6.6	5.1	5.3	5.5	80
85	4	4.2	4.2	7.5	7.3	7.1	6.4	6.4	6.4	6.8	6.8	6.8	6	6	6.2	6.2	6.2	6.4	5.1	5.3	5.5	85
90	3.7	3.9	4	7.2	7	6.9	6.2	6.2	6.2	6.8	6.7	6.7	6	6	6	6.2	6.2	6.4	4.9	5.1	5.4	90
95	3.4	3.5	3.8	7	6.7	6.6	6.2	6.1	6.1	6.7	6.5	6.5	5.9	5.9	5.9	6.1	6.1	6.3	4.9	5.1	5.3	95
100				6.7	6.6	6.3	6.1	5.9	5.9	6.6	6.3	6.3	5.7	5.7	5.7	6	6	6.1	4.8	5	5.2	100
105				6.4	6.4	6.2	6	5.7	5.7	6.4	6.2	6.2	5.7	5.5	5.5	6	6	6	4.6	4.9	5.1	105
110				6.2	6.1	6	5.8	5.6	5.6	6.2	6	6	5.6	5.3	5.3	5.6	5.8	5.8	4.6	4.9	5.1	110
115				6.1	5.8	5.8	5.6	5.4	5.4	5.8	5.8	5.8	5.4	5.3	5.3	5.1	5.6	5.6	4.4	4.7	5	115
120				5.8	5.7	5.7	5.4	5.2	5.2	5.3	5.6	5.7	5	5.2	5.2	4.4	5.2	5.4	4	4.6	4.8	120
125				5.5	5.5	5.5	5	5.1	5.1	4.6	5.3	5.5	4.4	5	5.1	3.7	4.4	5	3.5	4.4	4.6	125
130				5	5.3	5.3	4.5	4.9	4.9	4.1	4.8	5.2	3.7	4.5	4.9	3	3.7	4.4	2.8	3.5	4.1	130
135				4.3	4.9	5	4	4.6	4.7	3.5	4.1	4.6	3.2	3.9	4.5	2.4	3.2	3.7	2.1	2.9	3.5	135
140				3.8	4.3	4.6	3.5	4.1	4.4	2.9	3.5	4	2.6	3.3	3.9	1.8	2.6	3.1		2.4	2.9	140
145				3.2	3.7	4.1	2.8	3.5	3.9	2.4	3	3.5	2.1	2.8	3.2			2.6			2.4	145
150				2.7	3.2	3.6	2.5	3	3.4	1.9	2.5	3	1.6	2.3	2.7			1.9			1.9	150
155				2.2	2.7	3.1	2	2.5	2.9				2		2.3							155
160				1.8	2.3	2.6		2	2.4													160
165					1.9	2.1			1.9													165
170					1.4	1.6			1.4													170

t_187_01389_00_000

Lifting capacities Forces de levage

TVK/TVNZK

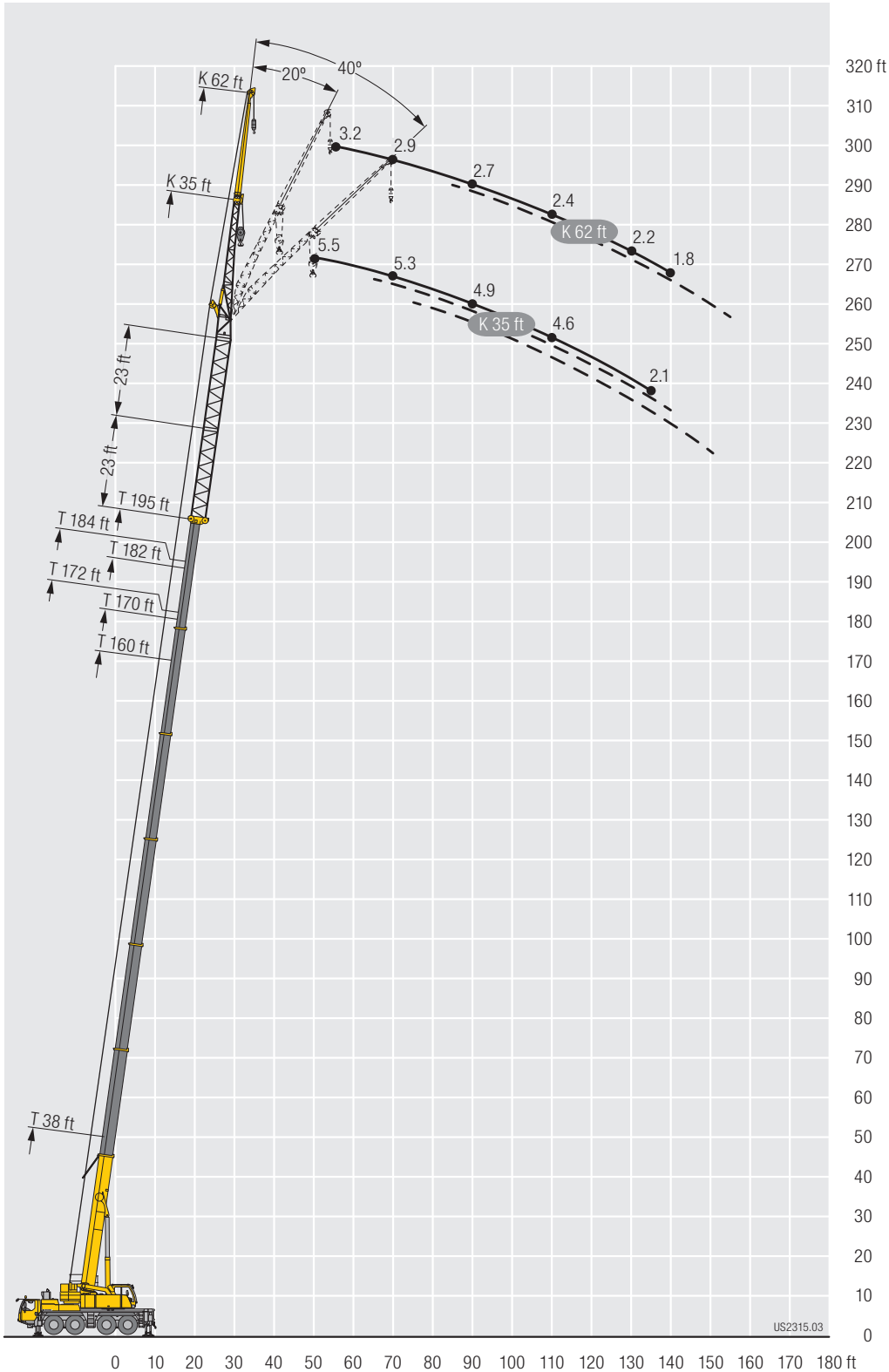


↙ ↘	38 ft + 46 ft			160 ft + 46 ft			170 ft + 46 ft		172 ft + 46 ft			182 ft + 46 ft		184 ft + 46 ft			195 ft + 46 ft		↙ ↘
	62 ft			62 ft			62 ft		62 ft			62 ft		62 ft			62 ft		
	0°	20°	40°	0°	20°	40°	0°	20°	0°	20°	40°	0°	20°	0°	20°	40°	0°	20°	
16	5.5																		16
17	5.5																		17
18	5.5																		18
20	5.5																		20
22	5.4																		22
24	5.3																		24
26	5.3																		26
28	5.3																		28
30	5.3																		30
32	5.3																		32
34	5.3																		34
36	5.3																		36
38	5.2																		38
40	5.1	5.5																	40
45	5.1	5.3		5.5															45
50	4.9	5.3		5.4			4.6		4.9					4.4					50
55	4.8	5.2		5.3			4.6		4.9			4.1		4.3			3.2		55
60	4.6	5		5.3			4.6		4.9			4		4.2			3.1		60
65	4.4	4.7	4.9	5.3			4.6		4.9			4		4.2			2.9		65
70	4.1	4.5	4.7	5.3	5.4		4.5		4.7			4		4.2			2.9		70
75	3.9	4.2	4.4	5.2	5.3		4.4	4.6	4.6	4.9		3.9	4	4.1	4.3		2.8		75
80	3.7	3.9	4.2	5.1	5.3		4.4	4.6	4.6	4.9		3.8	4	4	4.2		2.7		80
85	3.5	3.8	4	5.1	5.3		4.4	4.6	4.6	4.9		3.8	4	4	4.2		2.7	2.9	85
90	3.2	3.6	3.8	5.1	5.1	5.1	4.4	4.6	4.6	4.9		3.6	4	4	4.2		2.7	2.9	90
95	3	3.3	3.5	5.1	5.1	5	4.4	4.6	4.6	4.7	4.6	3.5	3.9	3.9	4.1	4.2	2.5	2.8	95
100	2.8	3	3.3	5	5	4.8	4.4	4.6	4.6	4.6	4.6	3.5	3.8	3.8	4	4.1	2.4	2.7	100
105	2.7	2.9	3.1	4.9	4.9	4.6	4.4	4.4	4.6	4.6	4.6	3.5	3.8	3.8	4	4	2.4	2.7	105
110	2.5	2.7	2.9	4.7	4.7	4.6	4.2	4.2	4.5	4.5	4.5	3.4	3.6	3.6	3.8	4	2.4	2.7	110
115	2.3	2.5	2.8	4.6	4.5	4.5	4.2	4.2	4.4	4.4	4.4	3.3	3.5	3.5	3.8	4	2.3	2.5	115
120	2.1	2.4	2.6	4.6	4.4	4.4	4.1	4.1	4.4	4.4	4.4	3.3	3.5	3.5	3.8	3.9	2.2	2.4	120
125	2	2.2	2.4	4.4	4.4	4.2	4	4	4.2	4.2	4.2	3.3	3.5	3.5	3.7	3.8	2.2	2.4	125
130	1.8			4.2	4.2	4.2	3.8	3.8	4	4	4	3.3	3.4	3.2	3.6	3.8	2.2	2.4	130
135				4.1	4.1	4.1	3.8	3.8	3.6	4	4	3.2	3.3	2.7	3.5	3.8	2.1	2.4	135
140				3.8	3.9	3.9	3.6	3.7	3.1	3.8	3.9	2.9	3.3	2.2	3.3	3.7	1.8	2.4	140
145				3.5	3.8	3.8	3.2	3.5	2.6	3.5	3.8	2.4	3.3		2.8	3.5		2.4	145
150				3	3.8	3.8	2.7	3.3	2.1	3.2	3.8	1.9	2.9		2.3	3.3		2.1	150
155				2.5	3.5	3.6	2.2	3	1.7	2.7	3.5		2.5		1.8	2.8		1.6	155
160				2	3.1	3.4	1.7	2.7		2.3	3.1		2			2.2			160
165					2.6	3.2		2.3			2.6								165
170					2	2.7		1.8			2								170
175					1.7	2.2					1.5								175
180						1.8													180

t_187_01401_00_000

Lifting capacities Forces de levage

TVK/TVNZK



Lifting capacities Forces de levage

TK

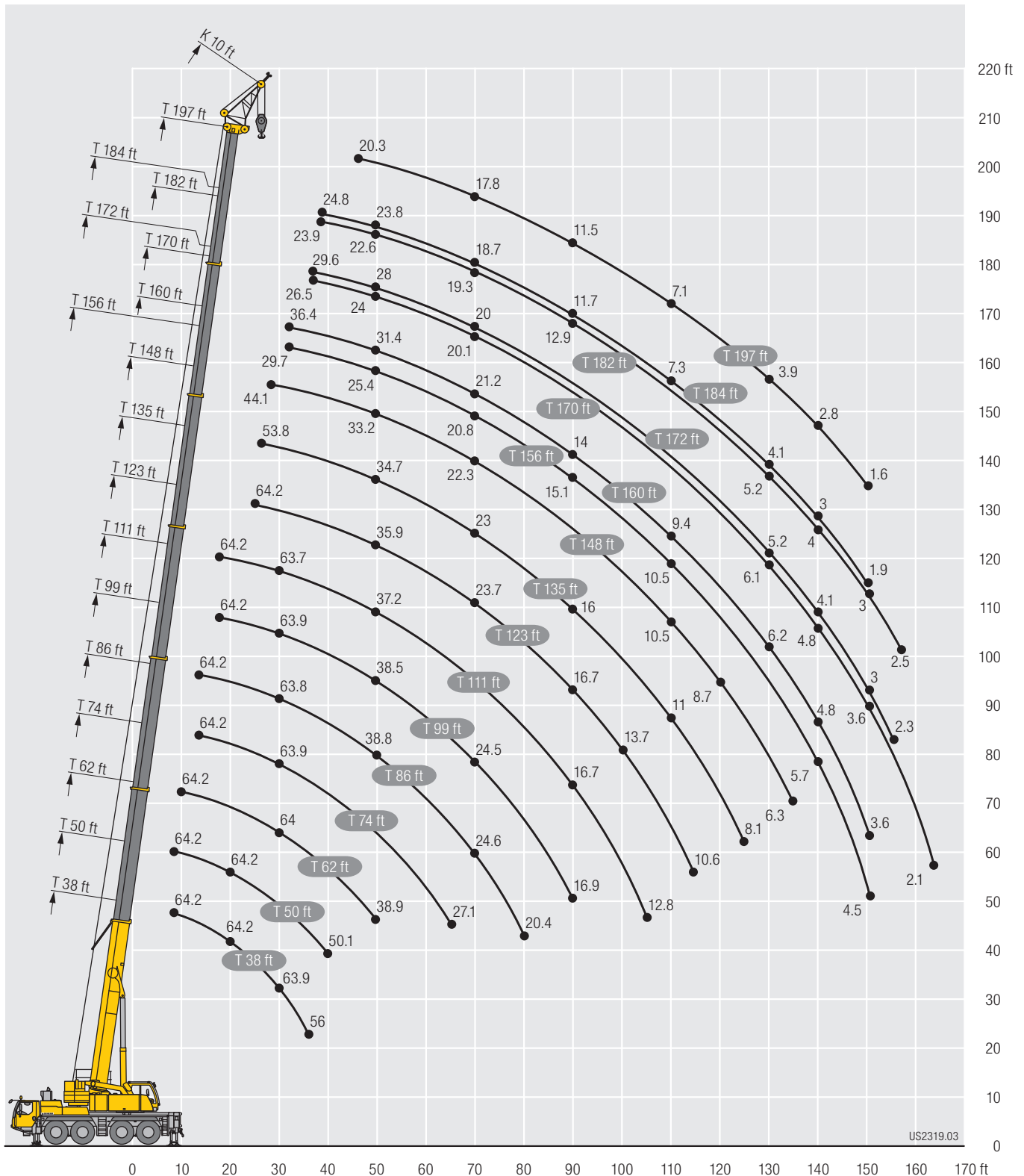


	38 ft	50 ft	62 ft	74 ft	86 ft	99 ft	111 ft	123 ft	135 ft	148 ft	156 ft	160 ft	170 ft	172 ft	182 ft	184 ft	197 ft	
	10 ft																	
9	64.2	64.2																9
10	64.2	64.2	64.2															10
11	64.2	64.2	64.2															11
12	64.2	64.2	64.2															12
13	64.2	64.2	64.2	64.2	64.2													13
14	64.2	64.2	64.2	64.2	64.2													14
15	64.2	64.2	64.2	64.2	64.2													15
16	64.2	64.2	64.2	64.2	64.2													16
17	64.2	64.2	64.2	64.2	64.2													17
18	64.2	64.2	64.2	64.2	64.2	64.2	64.2											18
20	64.2	64.2	64.2	64.2	64.2	64.2	64.2											20
22	64.2	64.2	64.2	64.2	64.2	64.2	64.2	64.2										22
24	64.2	64.2	64.2	64.2	64.2	64.2	64.2	64.1										24
26	64.2	64.2	64.2	64.2	64.2	64.2	64.2	64	53.8									26
28	64.2	64.2	64.2	64.2	64.2	64.2	64.2	63.5	53.3	44.1								28
30	63.9	64	64	63.9	63.8	63.9	63.7	62.4	52.8	43.8								30
32	63	63.2	63.3	62.8	62.3	62.7	62	59.7	52.1	43.5	29.7	36.4						32
34	60.1	60.5	60.8	60.3	60.1	60.3	59	56.5	50.9	43.2	29.3	36.1						34
36	56	56.6	57.1	56.8	57.2	57	55.1	52.9	49.2	42.8	28.9	35.7	26.5	29.6				36
38		53.2	53.5	53.8	54	53.5	52.1	49.5	46.7	42.1	28.5	35.6	26.1	29.4	23.9	24.8		38
40		50.1	50.4	51	51	50.3	49.2	46.4	44.3	41.1	28.1	35.3	25.7	29.3	23.8	24.7		40
45			44.2	44.6	44.2	43.6	42.3	40.6	39.1	36.9	26.7	34	24.9	28.8	23.2	24.3	20.3	45
50			38.9	39.1	38.8	38.5	37.2	35.9	34.7	33.2	25.4	31.4	24	28	22.6	23.8	20.2	50
55				34.4	34.1	34.1	33.1	32.1	31	29.6	24.1	28.4	23.1	26.4	21.9	23.3	19.9	55
60				30.5	30	30.1	29.7	29	27.9	26.5	23	25.4	22.1	24.1	21.2	22.4	19.5	60
65				27.1	26.7	27.3	26.8	26	25.2	24.1	22	23.4	21.1	22.3	20.4	20.9	19	65
70					24.6	24.5	24.4	23.7	23	22.3	20.8	21.2	20.1	20	19.3	18.7	17.8	70
75					22.6	22	22.1	21.5	21	20.5	19.5	19.1	18.7	17.9	17.7	16.6	16.2	75
80					20.4	19.8	20.1	19.5	19.2	18.5	18.1	17.2	17	16.1	15.9	14.8	14.4	80
85						18	18.4	18.2	17.5	16.7	16.6	15.5	15.3	14.4	14.2	13.1	12.9	85
90						16.9	16.7	16.7	16	15.1	15.1	14	13.8	13.1	12.9	11.7	11.5	90
95							15.3	15.1	14.6	13.8	13.7	12.7	12.5	11.7	11.6	10.5	10.3	95
100							14	13.7	13.3	12.6	12.5	11.5	11.3	10.5	10.4	9.3	9.1	100
105							12.8	12.6	12.1	11.5	11.5	10.4	10.1	9.5	9.3	8.2	7.9	105
110								11.6	11	10.5	10.5	9.4	9.1	8.5	8.4	7.3	7.1	110
115								10.6	9.9	9.6	9.6	8.5	8.2	7.6	7.5	6.5	6.3	115
120									8.9	8.7	8.7	7.7	7.5	6.7	6.6	5.6	5.4	120
125									8.1	7.9	7.9	7	6.8	5.9	5.9	4.8	4.6	125
130										7	7	6.2	6.1	5.2	5.2	4.1	3.9	130
135										6.3	6.3	5.5	5.5	4.7	4.6	3.6	3.4	135
140												5.7	4.8	4.8	4.1	4	3	140
145												5	4.1	4.1	3.5	3.5	2.4	145
150												4.5	3.6	3.6	3	3	1.9	150
155														3.1	2.3	2.5		155
160														2.6				160
165														2.1				165

t_187_01413_00_000

Lifting capacities Forces de levage

TK



Equipment Equipment

Crane carrier

Frame	Self-manufactured, torsion-resistant box-type design of high-tensile fine grained structural steel.
Outriggers	4-point supporting system, hydraulically telescopic into horizontal and vertical direction. Operation with remote control, automatic support leveling, electronic inclination display.
Engine	6-cylinder Diesel, make Liebherr, watercooled, output 350 kW (476 h.p.), max. torque 1826 lbs-ft. Exhaust emissions acc. to 97/68/EG, EPA/CARB, ECE-R.96. Fuel reservoir: 106 gallons.
Transmission	ZF 12-speed gear box with automatic control system. ZF-intarder fitted directly to the gear. Two-stage transfer case with lockable transfer differential.
Axles	Low maintenance carrier axles, all 4 axles steered. Axle 2, 3 and 4 are equipped with planetary gears, all driven axles with transverse differential locks, axle 3 with longitudinal differential lock.
Cardan shaft	All cardan shafts with 70° diagonal toothing and maintenance free.
Suspension	All axles are hydro-pneumatically suspended with automatic leveling. Suspension hydraulically lockable.
Tyres	8 tyres, size: 445/95 R 25 (16.00 R 25).
Steering	2-circuit system with hydraulic servo steering. Active speed depending rear axle steering, special steering programs for various driving situations.
Brakes	Service brake: all wheel servo air brake, all axles are equipped with disc brakes, dual circuit. Hand brake: Spring loaded, acting on all wheels of axles 1, 2 and 4. Additional brakes: exhaust flap brake, intarder in gearbox.
Driver's cab	Spacious corrosion resistant with comfort furnishings, mounted on rubber shock absorbers, safety glazing.
Electrical system	Modern data bus technique, 24 Volt DC, 2 batteries of 170 Ah each.

Crane superstructure

Frame	Liebherr-manufactured, torsionally rigid steel construction made from high-tensile fine-grain steel. Triple-roller slewing rim.
Crane engine	4-cylinder Diesel, make Liebherr, watercooled, output 129 kW (175 h.p.), max. torque 908 lbs-ft. Exhaust emissions acc. to 97/68/EG, EPA/CARB, ECE-R.96. Fuel reservoir: 66 gallons.
Crane drive	Diesel hydraulic, with 1 axial piston variable displacement pump, with servo control and capacity control, 1 double gear pump, open controlled oil circuits. Compact hydraulic drive flanged to the Diesel engine. Drive assembly completely enclosed for noise abatement.
Control	Electric „Load Sensing“ control, simultaneous operation of 4 working motions, 2 self-centering hand control levers (joy stick type).
Hoist gear	Axial piston fixed displacement motor, hoist drum with integrated planetary gear and spring-loaded static brake.
Luffing gear	1 differential ram with safety check valves.
Slewing gear	Axial piston fixed displacement motor, planetary gear, spring-loaded static brake. Slewing gear inversible from released to locked as standard feature.
Crane cab	Large screen area, compound glass, comfort furnishing, cabin tiltable 20° to rear.

Safety devices	LICCON2 safe load indicator, test system, hoist limit switch, safety valves to prevent pipe and hose ruptures.
Telescopic boom	1 base section and 6 telescopic sections. All telescopic sections hydraulically extendable independent of one another. Rapid-cycle telescoping system Telematik. Boom length: 38 ft – 197 ft.
Counterweight	37,900 lbs basic counterweight.
Electrical system	Modern data bus technique, 24 Volt DC, 2 batteries of 170 Ah each.

Operating modes

K	Erection jib 10 ft Double swing-away jib 35 ft – 62 ft Adjustment 0°, 20°, 40°
NZK	Hydraulically adjustable swing-away jib 35 ft – 62 ft Hydraulically adjustment 0° – 40°
V	Telescopic boom extension 2 x 23 ft

Additional equipment

2nd hoist gear	For two-hook operation or for operation with swing-away jib if the hoist rope shall remain reeved.
Additional counterweight	24,300 lbs for a total counterweight of 62,200 lbs.
Tyres	8 tyres, size 525/80 R 25 (20.5 R 25).
Drive 8 x 8	Additional drive of the 1st axle.

Other items of equipment available on request.

The pictures contain also accessories and special equipment not included in the standard scope of delivery.

Equipment Équipement

Châssis porteur

Cadre	Châssis résistant à la torsion de fabrication Liebherr, en acier à grains fins très résistant.
Calage	Dispositif de calage horizontal et vertical en 4 points, entièrement déployable hydrauliquement. Utilisation avec commande à distance, mise à niveau automatique du calage, inclinomètre électronique.
Moteur	Moteur diesel, 6 cylindres, fabriqué par Liebherr, à refroidissement par eau, de 350 kW (476 ch), couple max. 1826 lbs-ft. Emissions des gaz d'échappement conformes aux directives 97/68/EG, EPA/CARB, ECE-R.96. Capacité du réservoir à carburant: 106 gallons.
Boîte de vitesse	Boîte de vitesses ZF à 12 rapports, mécanisme automatisé à commande. Ralentisseur hydrodynamique ZF directement accouplé à la boîte. Boîte de transfert à 2 étages avec blocage de différentiel.
Essieux	Essieux nécessitant peu d'entretien, les 4 essieux sont directeurs. Les essieux 2, 3 et 4 sont des essieux planétaires, tous les essieux moteurs avec différentiel transversal et l'essieu 3 avec différentiel longitudinal.
Arbres articulés	Tous les flasques de croisillons avec denture en croix 70° et sans entretien.
Suspension	Tous les essieux sont à suspension hydropneumatique avec mise à niveau automatique. Suspension blocable hydrauliquement.
Pneumatiques	8 pneus de taille: 445/95 R 25 (16.00 R 25).
Direction	2 circuits avec direction assistée hydraulique. Direction active des essieux arrière et dépendante de la vitesse, programmes de direction spéciaux pour les différents modes de déplacement.
Freins	Freins de service: servofrein à air comprimé, tous les essieux sont munis de freins à disque, à 2 circuits. Frein à main: par cylindres à ressorts, agissant sur les roues des essieux 1,2 et 4. Freins auxiliaire: par clapet sur échappement, ralentisseur monté sur boîte de vitesse.
Cabine	Spacieuse cabine, traitement anticorrosion, équipement «grand confort», suspension par silentbloks, vitrage de sécurité.
Installation électrique	Technique moderne de transmission de données par BUS de données, courant continu 24 Volts, 2 batteries de 170 Ah chacune.



Partie tournante

Cadre	Fabrication Liebherr, construction soudée indéformable, en acier à grain fin haute résistance. Couronne d'orientation à triple rangée de rouleaux.
Moteur	Moteur diesel Liebherr, 4 cylindres, à refroidissement par eau, de 129 kW (175 ch), couple max. 908 lbs-ft. Emissions des gaz d'échappement conformes aux directives 97/68/EG, EPA/CARB, ECE-R.96. Capacité du réservoir à carburant: 66 gallons.
Entraînement	Diesel hydraulique avec 1 pompe à débit variable à pistons axiaux, servocommande et régulation de la puissance, 1 double pompe à engrenages, circuits hydrauliques ouverts et régulés. Entraînement hydraulique compact, accouplé directement au moteur Diesel, mécanisme d'entraînement total fermé pour une bonne insonorisation.

Commande	Direction électrique "Load Sensing", 4 mouvements de travail dirigeable simultanément, deux leviers de commande à 4 positions et à autocentrage.
Mécanisme de levage	Moteur à cylindrée constante et à pistons axiaux. Treuil équipé d'un engrenage planétaire et d'un frein d'arrêt commandé par ressort.
Mécanisme de relevage	1 vérin différentiel avec soupapes de retenue.
Dispositif de rotation	Moteur à cylindrée constante à pistons axiaux, réducteur planétaire, frein d'arrêt commandé par ressort. Commutation en série du mécanisme d'orientation: ouvert et en orientation freinée automatiquement.
Cabine de grue	Large champ de vision, vitrage de sécurité, équipement pour un confort idéal, cabine inclinable de 20° vers l'arrière.
Dispositif de sécurité	Contrôleur de charge, «LICCON2», système test, limitation de la course pour le levage, soupape de sûreté contre la rupture de tubes et de tuyaux.
Flèche télescopique	1 élément de base et 6 éléments télescopiques. Tous les éléments télescopiques indépendamment les uns des autres. Système de télescopage séquentiel rapide, Telematik. Longueur de flèche: 38 ft – 197 ft.
Contrepoids	Plaque de base 37,900 lbs.
Installation électrique	Technique moderne de transmission de données. Courant continu 24 Volts, 2 batteries de 170 Ah chacune.



Modes de fonctionnement

K	Flèche de montage 10 ft Double flèche pliante 35 ft – 62 ft Positionnement à 0°, 20°, 40°
NZK	Flèche pliante à positionnement hydraulique 35 ft – 62 ft Positionnement hydraulique à 0° – 40°
V	Rallonge flèche télescopique 2 x 23 ft

Équipement supplémentaire

















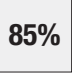



2ème mécanisme de levage	Pour l'utilisation du deuxième crochet, ou bien pour une utilisation avec flèche pliante lorsque le câble de levage principal rest mouflé.
Contrepoids additionnel	24,300 lbs pour un contrepoids total de 62,200 lbs.
Pneumatiques	8 pneus. Taille: 525/80 R 25 (20.5 R 25).
Entraînement 8 x 8	Essieu 1 est entraîné additionnellement.

Autres équipements supplémentaires sur demande.





Les figures contiennent également des accessoires et des équipements spéciaux non inclus de série dans la livraison.

Description of symbols Explication des symboles

General symbols/Symboles généraux

	Outriggers Calage		Driving speed – Onroad gear Vitesse de translation – Vitesse de route
	Axle Essieu		Driving speed – Crawl speed Vitesse de translation – Marche lente
	Radius Portée		Max. lifting capacity Capacité max.
	Boom length Longueur de la flèche		Transmission Boîte de vitesse
	Boom position Position de la flèche		Gear Vitesse
	Counterweight Contrepoids		Hookblock / Capacity Moufle à crochet / Capacité de charge
	Tyres Pneumatiques		Hoist gear Treuil de levage
	Slewing gear / Working area Mécanisme d'orientation / Plage de travail		Crane carrier Châssis porteur
	Standard Norme		Crane superstructure Partie tournante de la grue
	Driving speed Vitesse de translation		Gradability Aptitude à gravir les pentes

Crane specific symbols/Symboles spécifiques à la grue

	Telescopic boom Flèche télescopique		Telescopic boom extension Rallonge flèche télescopique
	Mechanical/hydraulic swing away jib Fléchette pliante mécanique/hydraulique		Erection jib Fléchette de montage



Subject to modification / Sous réserve de modifications

Printed in Germany (1)

td-187-00-us04-2017

Liebherr-Werk Ehingen GmbH

Postfach 1361, 89582 Ehingen, Germany

☎ +49 73 91 5 02-0, Fax +49 73 91 5 02-33 99

www.liebherr.com, E-mail: info.lwe@liebherr.com

www.facebook.com/LiebherrConstruction

Courtesy of Crane.Market